



YOUNGQUIST BROTHERS, Inc
GEOPHYSICAL LOGGING DIVISION

HIGH RESOLUTION TEMPERATURE
SOU LOG DISTRICT

2009 APR 13 A 9:44

Company CHARLOTTE COUNTY UTILITIES
Well IW-2
Field BURNT STORE WWTP
County CHARLOTTE
State FL

Company CHARLOTTE COUNTY UTILITIES
Well IW-2
Field BURNT STORE WWTP
County CHARLOTTE State FL

Location: API #:

MALCOLM PIRNIE/
MCNABB HYDROGEOLOGICAL

Other Services
RTS

SEC TWP RGE

Elevation

Elevation
K.B.
D.F.
G.L.

Permanent Datum
Log Measured From
Drilling Measured From

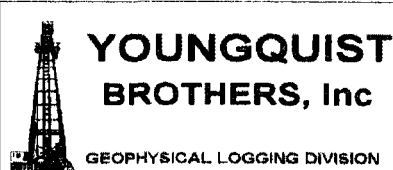
Date 22-AUG-2008

Run Number	RTS			
Depth Driller	3002'			
Depth Logger	3002'			
Bottom Logged Interval	3002'			
Top Log Interval	SURFACE			
Open Hole Size	22"			
Type Fluid	WATER			
Density / Viscosity	NA			
Max. Recorded Temp.	103 F			
Estimated Cement Top	NA			
Time Well Ready	0700			
Time Logger on Bottom	0800			
Equipment Number	102			
Location	FT. MYERS			
Recorded By	CATHEY			
Witnessed By	M. BLACK			
Borehole Record		Borehole Record		
Run Number	Bit	From	To	Run No.
				Bit
				From
				To
Casing Record	Size	Wgt/Ft	Top	Bottom
Surface String	54"	.375" WT	SURFACE	220'
Prot String	44"	.375" WT	SURFACE	710'
Production String	34"	.375" WT	SURFACE	1370'
Liner	24"	.500" WT	SURFACE	2503'
	18"	FRP	SURFACE	2492'

<<< Fold Here >>>

All interpretations are opinions based on inferences from electrical or other measurements and we cannot and do not guarantee the accuracy or correctness of any interpretation, and we shall not, except in the case of gross or willful negligence on our part, be liable or responsible for any loss, costs, damages, or expenses incurred or sustained by anyone resulting from any interpretation made by any of our officers, agents or employees. These interpretations are also subject to our general terms and conditions set out in our current Price Schedule.

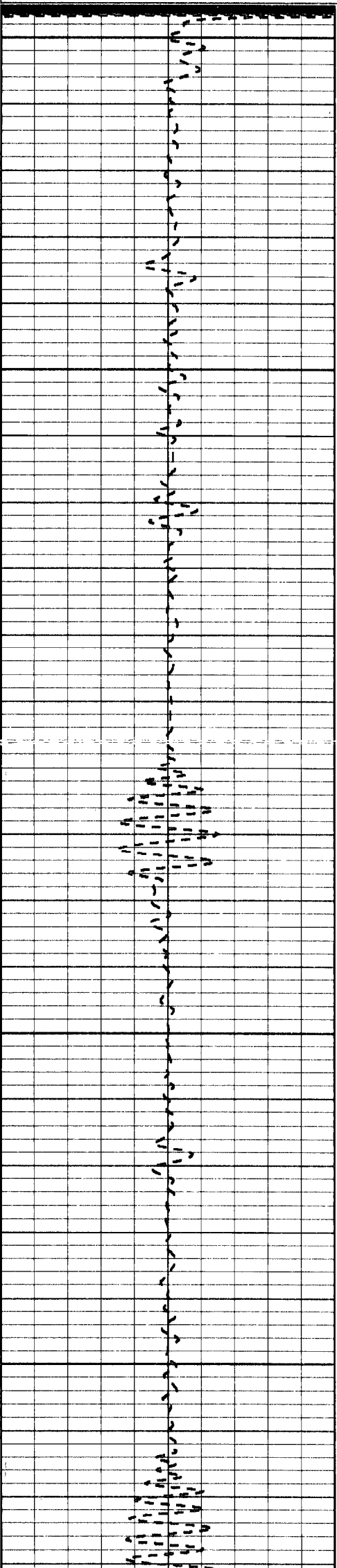
Comments



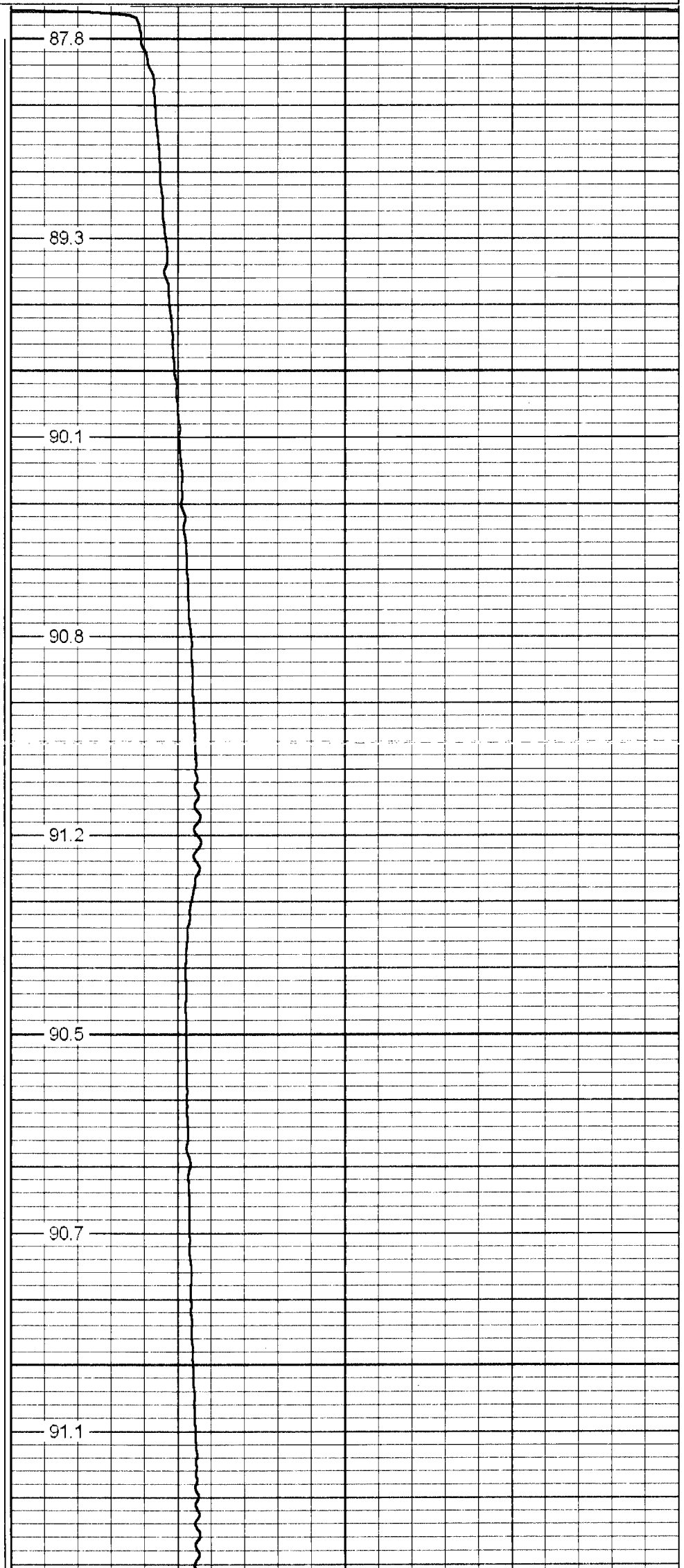
TEMPERATURE

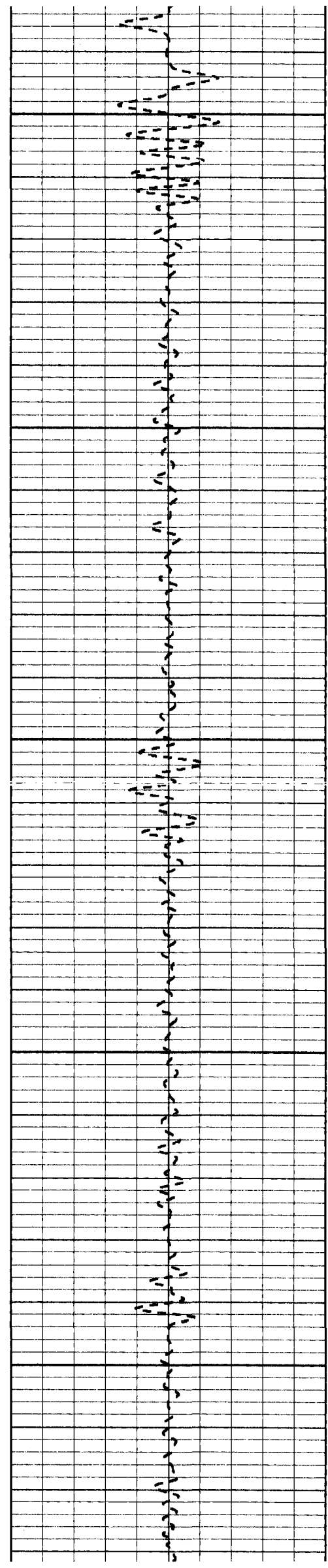
Database File: bsto2rts.db
Dataset Pathname: RTS/pass1
Presentation Format: temp
Dataset Creation: Fri Aug 22 07:28:21 2008 by Log 6.2_B4
Charted by: Depth in Feet scaled 1:240

Temperature
(degF)



0
50
100
150
200





250

300

350

400

450

91.0

91.4

91.4

91.5

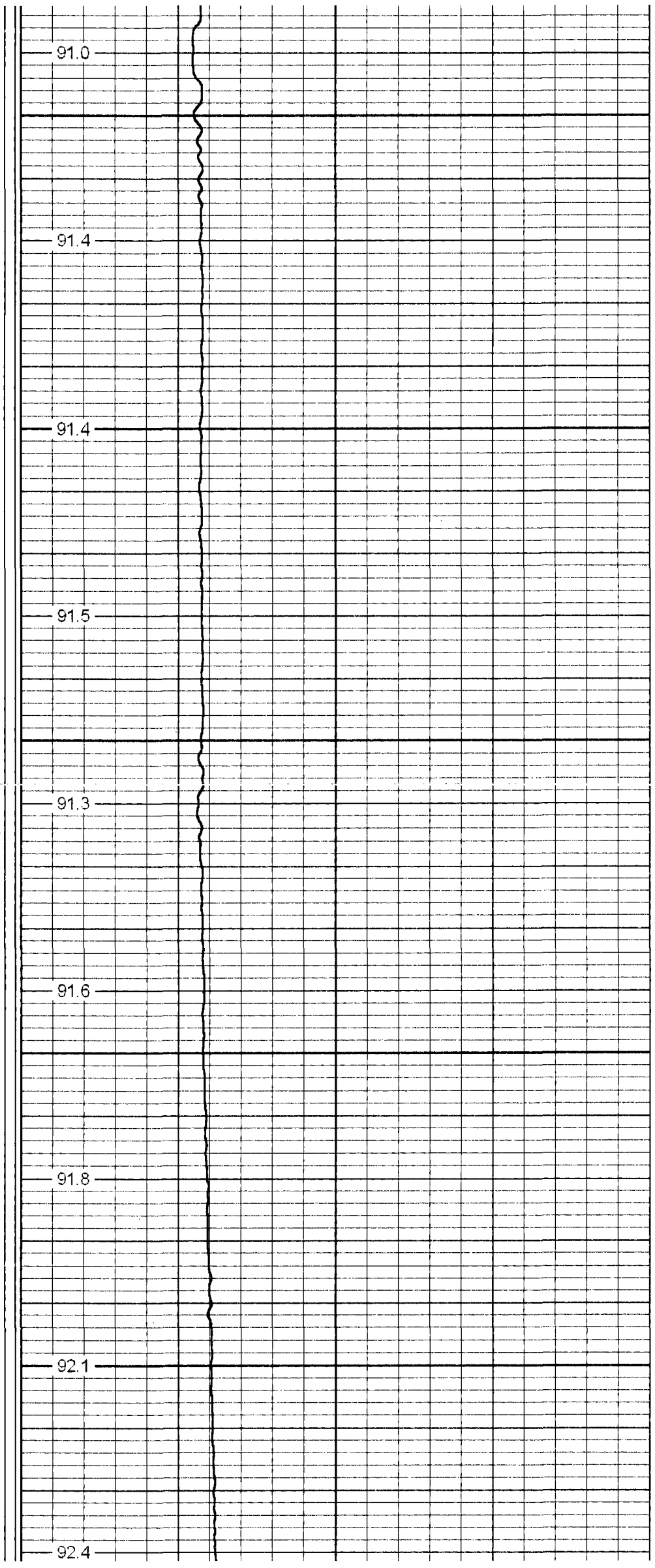
91.3

91.6

91.8

92.1

92.4



Handwritten notes on the left side of the grid, possibly describing data points or observations.

500

92.5

550

92.7

92.9

600

93.0

93.1

650

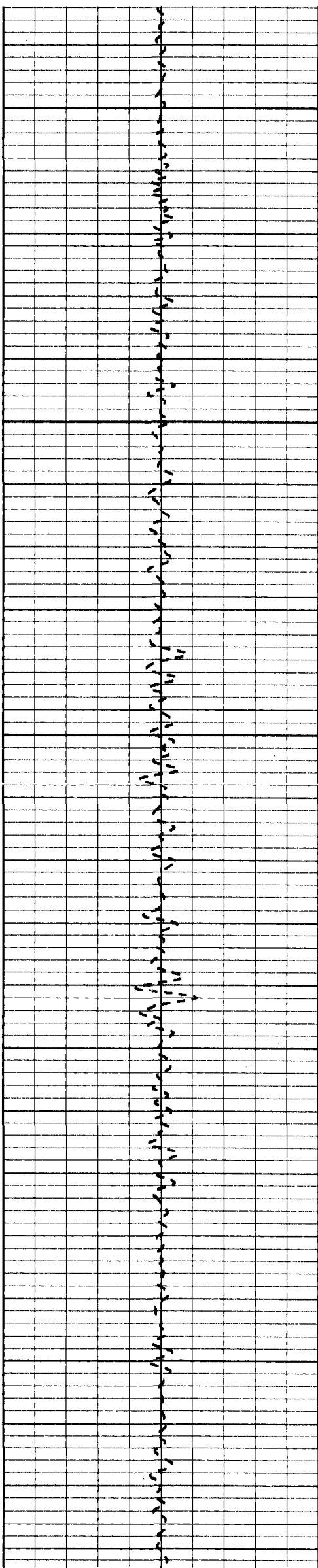
93.2

93.5

700

93.6





750

93.9

94.0

800

94.2

94.0

850

94.3

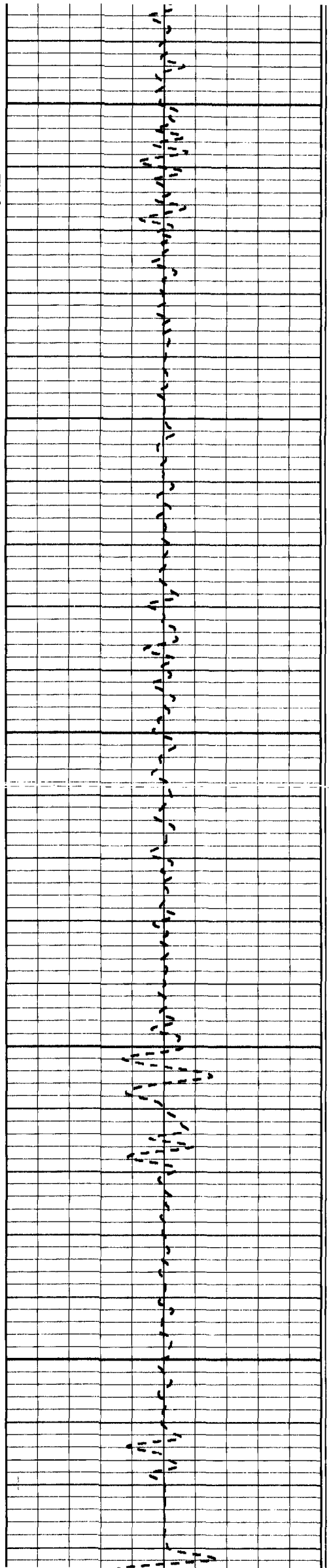
900

94.5

94.8

950

95.0



1000

1050

1100

1150

1200

95.0

95.3

95.5

95.8

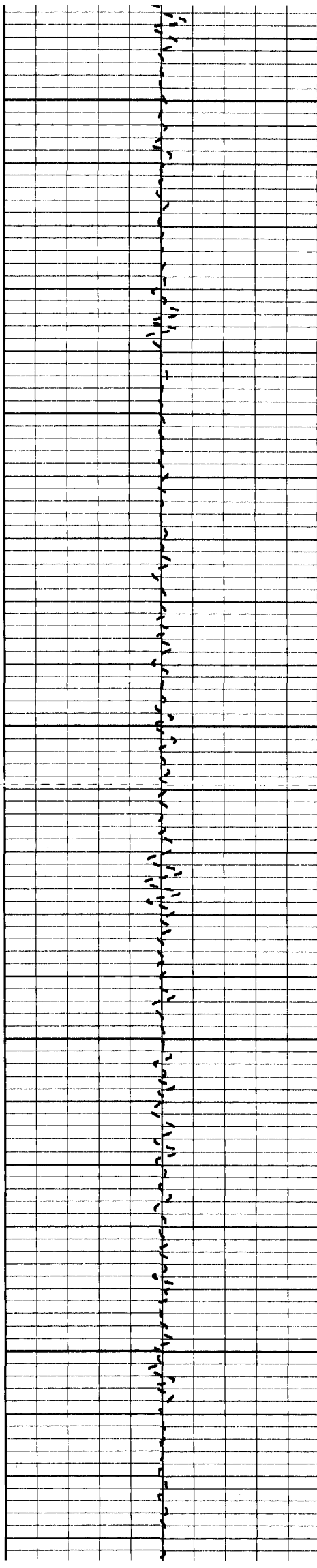
96.1

96.3

96.6

96.9

96.9



1250

97.4

1300

97.7

1350

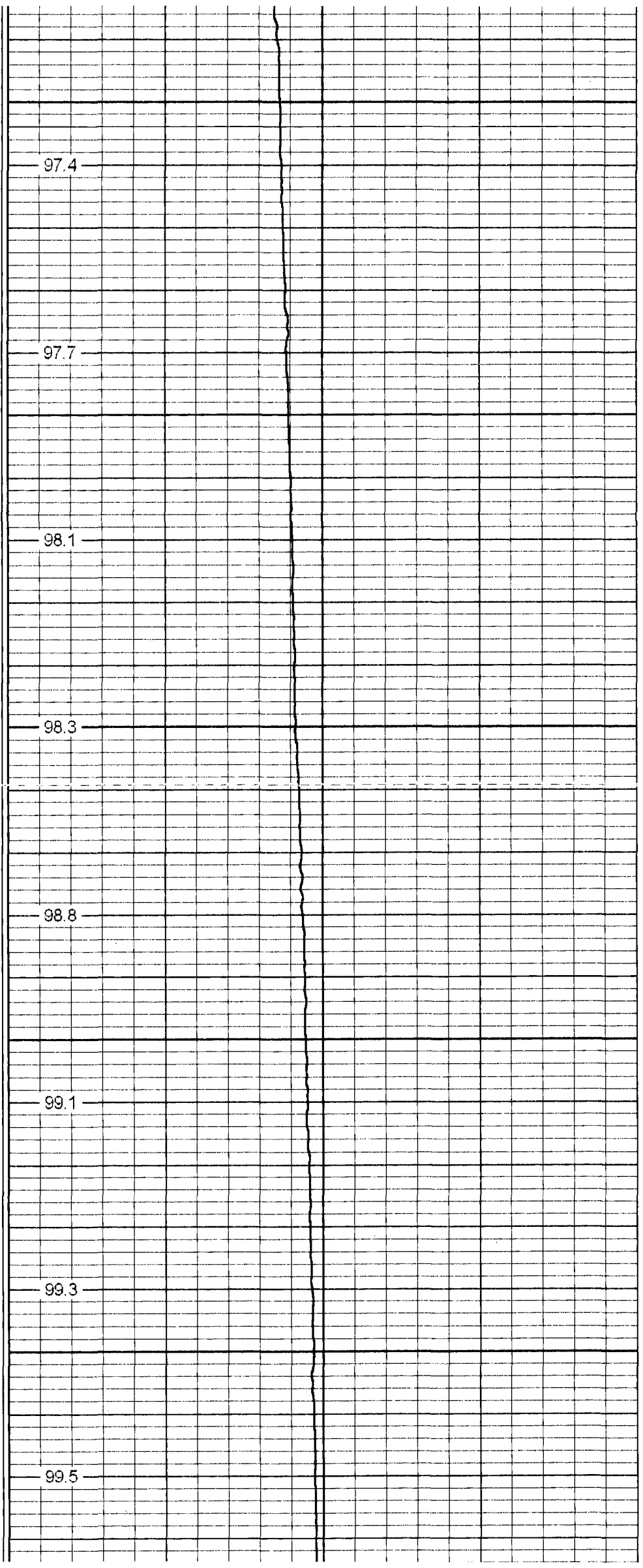
98.3

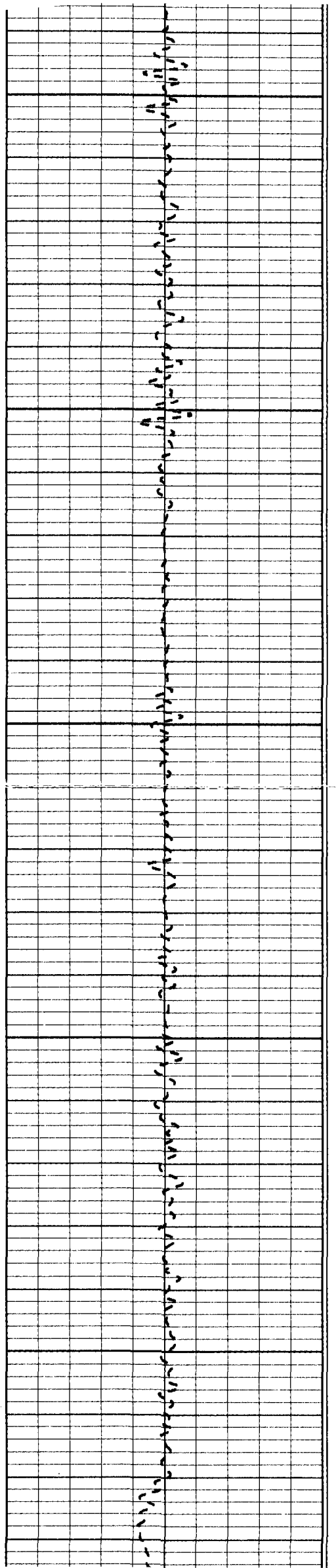
1400

99.1

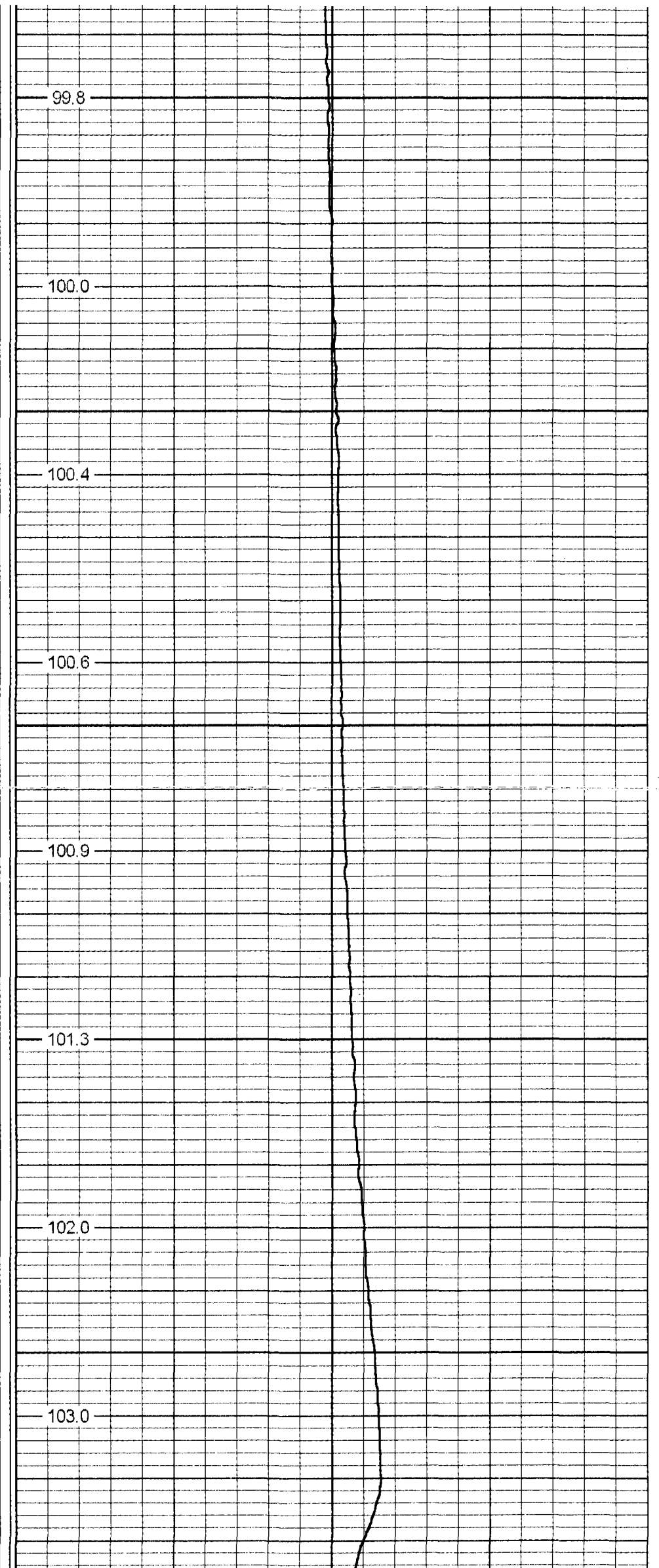
1450

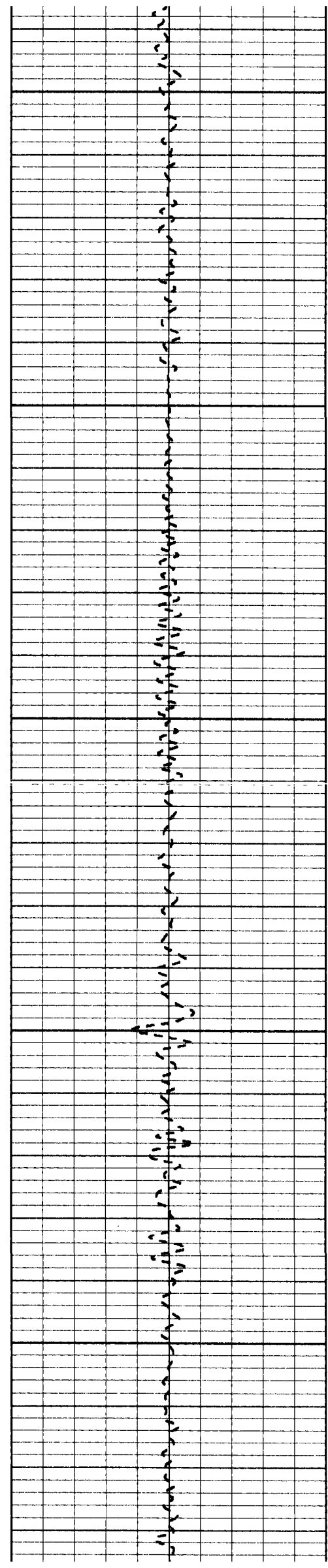
99.5





1500
1550
1600
1650
1700





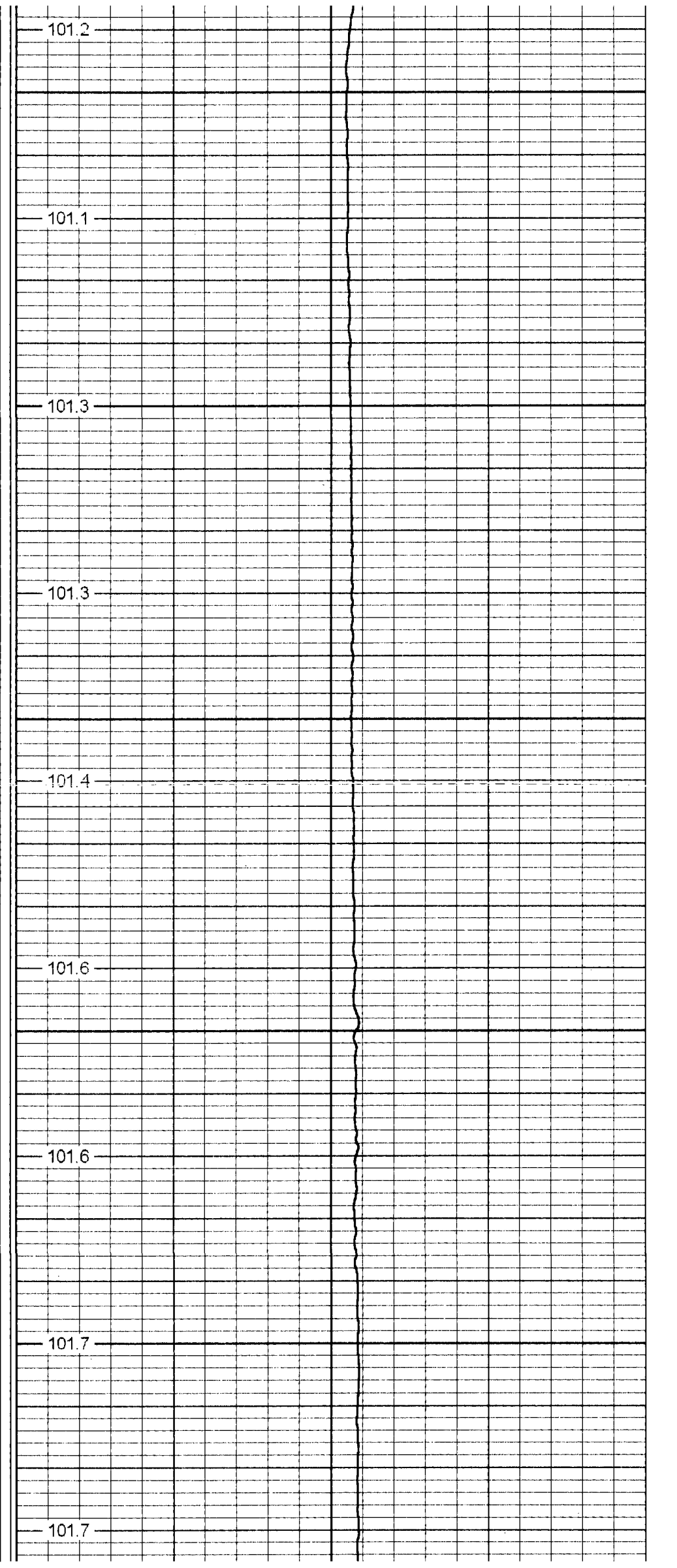
1750

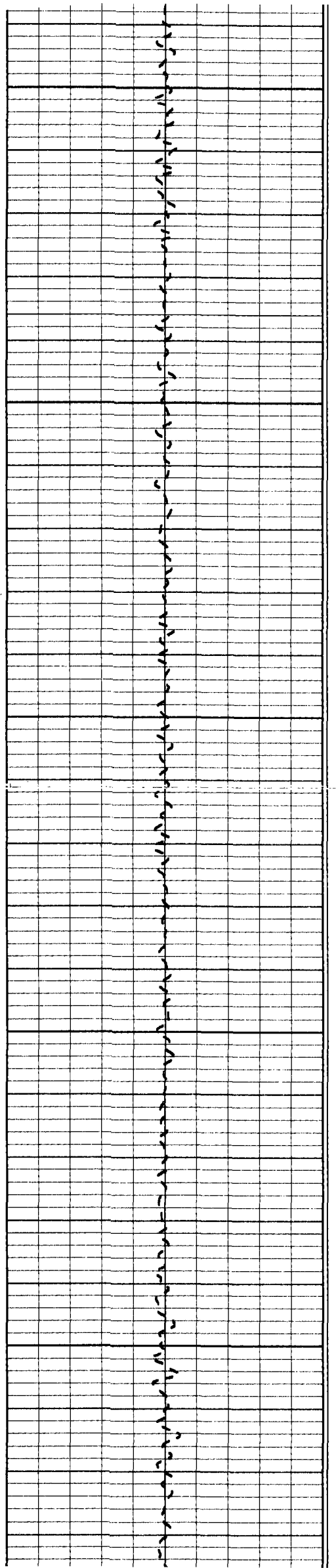
1800

1850

1900

1950





2000

101.8

2050

101.8

2100

102.0

102.0

2150

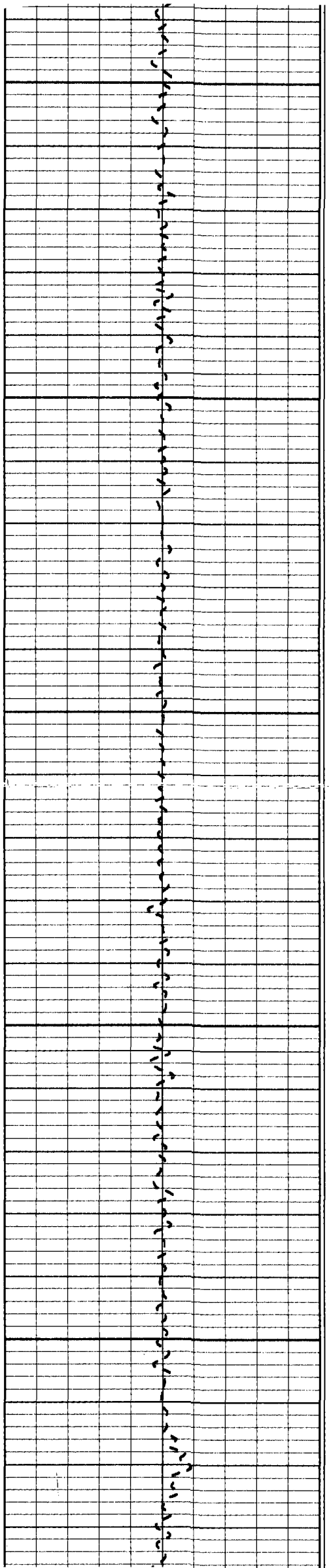
101.9

102.1

2200

101.7

101.6



2250

101.7

2300

101.7

101.8

2350

102.0

102.0

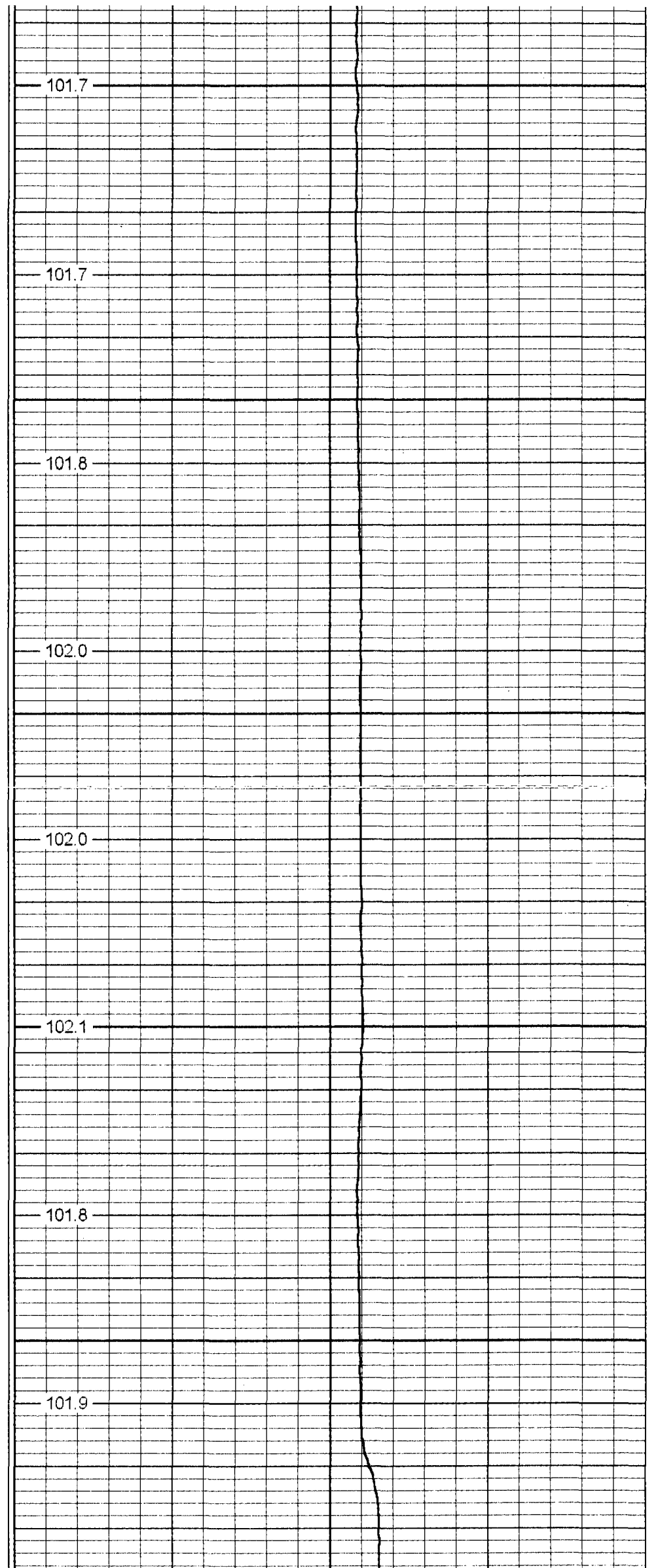
2400

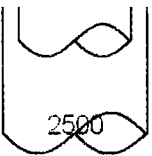
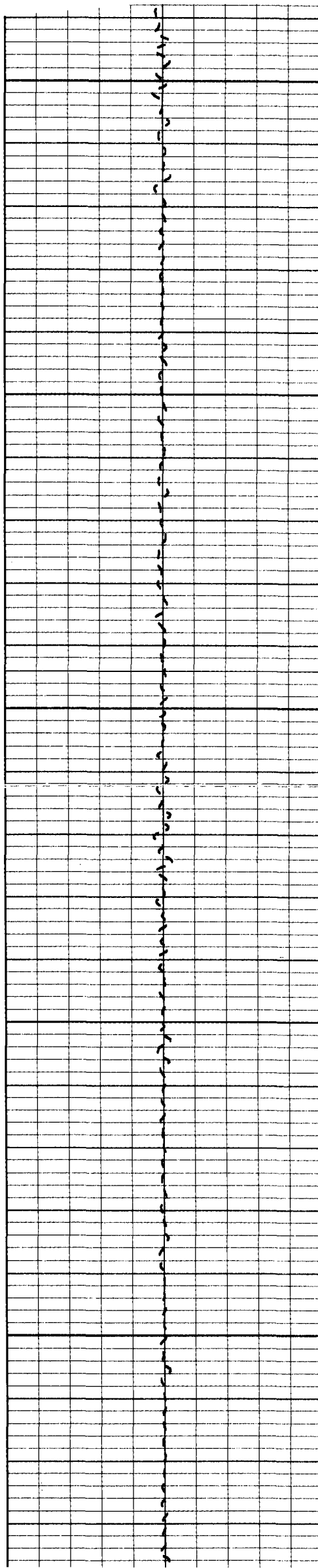
102.1

101.8

2450

101.9





2500

2550

2600

2650

2700

102.9

102.9

102.9

102.9

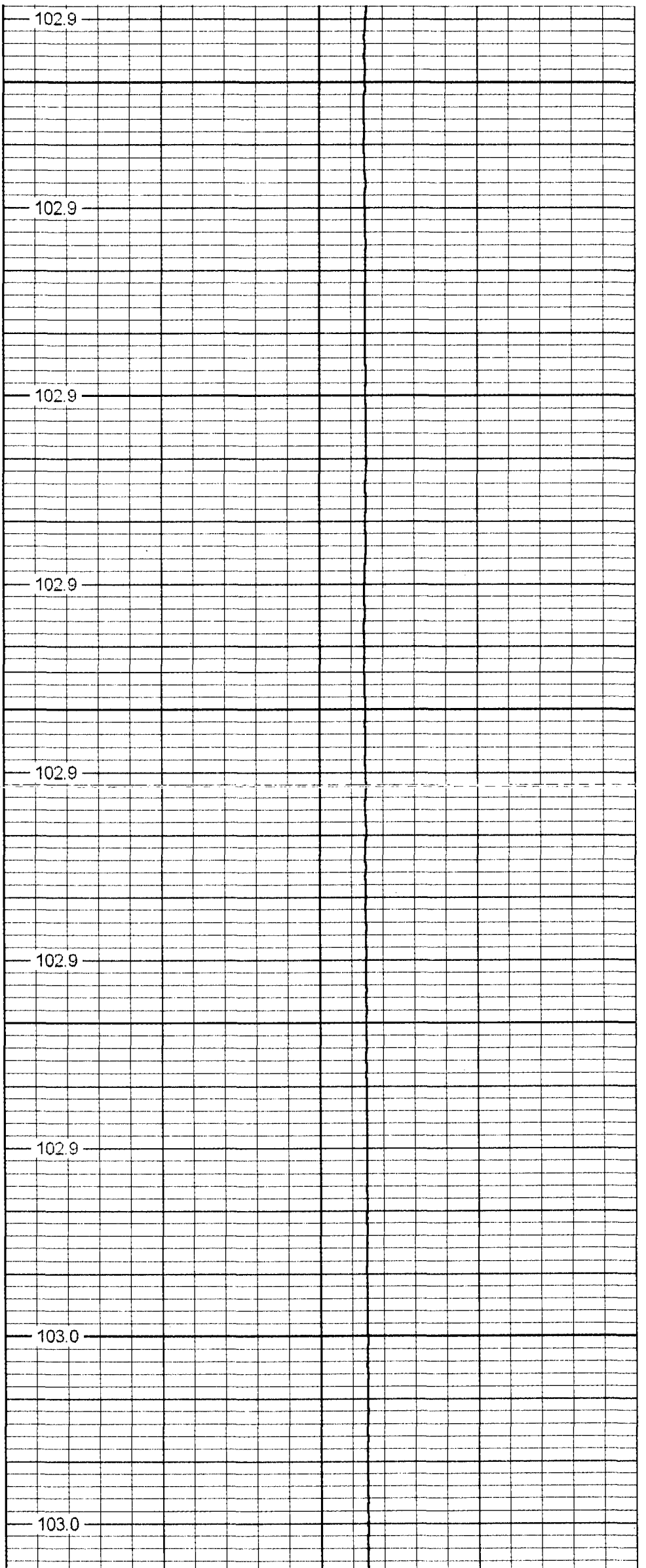
102.9

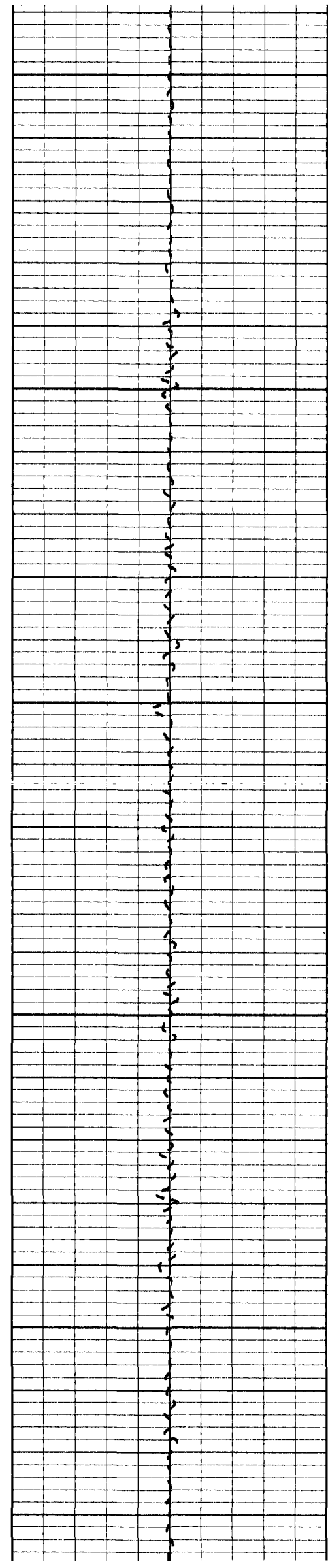
102.9

102.9

103.0

103.0





2750

103.0

2800

103.1

2850

103.1

103.1

2900

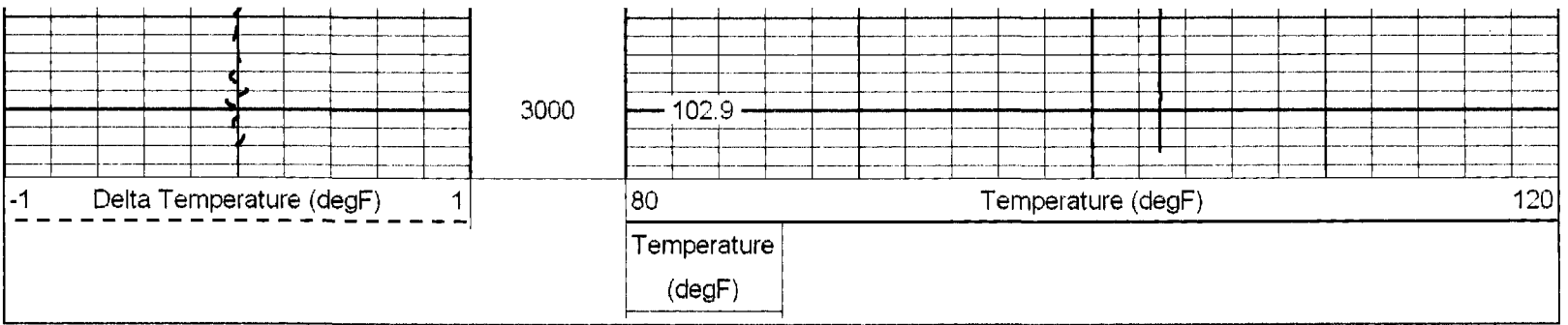
102.9

102.9

2950

102.9

102.9



Calibration Report

Database File: bsto2rts.db
 Dataset Pathname: RTS/pass1
 Dataset Creation: Fri Aug 22 07:28:21 2008 by Log 6.2_B4

Temperature Calibration Report

Serial Number: 954
 Tool Model: RTS
 Performed: Tue Jun 06 16:26:48 2006

Point #	Reading		Reference	
1	342.2	cps	34	degF
2	865.2	cps	86	degF
3	1553.28	cps	152	degF
4		cps		degF
5		cps		degF
6		cps		degF
7		cps		degF
8		cps		degF
9		cps		degF
10		cps		degF

Sensor	Offset (ft)	Schematic	Description	Len (ft)	OD (in)	Wt (lb)
			TEMP-RTS (954)	25.50	1.69	70.00

TEMP

0.10

Dataset: bsto2rts.db: field/well/RTS/pass1
Total Length: 25.50 ft
Total Weight: 70.00 lb
O.D. 1.69 in