

Schlumberger

TEMPERATURE - GAMMA RAY LOG

COUNTY	BREVARD	COMPANY	HYDRO DESIGN
FIELD	MELBOURNE	WELL	D. B. LEE
LOCATION		COUNTY	BREVARD
		STATE	FLORIDA
Permanent Datum	PAD LEVEL	Elev.	
Log Measured From	PAD LEVEL		above Perm. Datum
Drilling Measured From	PAD LEVEL		
Date	15-MAY-89		Elev.: K.B. D.F. Q.L.
Run No.	3		
Depth Driller	2500.0 F		
Depth Logger (Sohl.)	2165.0 F		
Btm. Log Interval	2165.0 F		
Top Log Interval	80.0 F		
Casing-Driller	24	@2000.0 F	
Casing-Logger	1997.0 F		
Bit Size	24		
Type Fluid In Hole	WATER		
Dens.	8.30 LB/G		
pH			
Source of Sample	NONE		
Rm @ Meas. Temp.			
Rmf @ Meas. Temp.			
Rmc @ Meas. Temp.			
Source: Rmf	MEASURE		
Rmc	MEASURE		
Rm @ BHT			
Circulation Ended			
Logger on Bottom	2146		
Max. Req. Temp.			
Equip.	8193	FT MYERS	
Recorded By	BUCHHEL		
Witnessed By	MEHAN		

The well name, location and borehole reference data were furnished by the customer.

All interpretations are opinions based on inferences from electrical or other measurements and we cannot, and do not guarantee the accuracy or correctness of any interpretations, and we shall not, except in the case of gross or willful negligence on our part, be liable or responsible for any loss, costs, damages or expenses incurred or sustained by anyone resulting from any interpretations made by any of our officers, agents or employees. These interpretations are also subject to Clause 4 of our General Terms and Conditions as set out in our current Price Schedule.

Run No.	3
Service Order No.	
Drilling Fluid Level	0.0 F
Salinity	
Rmf @ BHT	
Rmc @ BHT	
Logging Speed	2000.0 F/HR
EQUIPMENT DATA	
Tool Number 1	ATTB 924
Tool Number 2	ATM 303
Tool Number 3	
Tool Number 4	
Tool Number 5	
Tool Number 6	
Tool Number 7	
Tool Number 8	
Tool Number 9	
Tool Number 10	
Tool Number 11	
Tool Number 12	

REMARKS:

TRACER LOGGED 13-MAY-89

THANK YOU FOR USING SCHLUMBERGER!!!

REMARKS:

TRACER LOGGED 13-MAY-89
 PUMPED IN APPROX. 2400GALS
 SURFACE PRESSURE APPROX. 10.5 PSIS
 THANK YOU FOR USING SCHLUMBERGER!!!

DATA ACQUIRED LOGGING UP

TEMP(DEGF)		TEMP[6](DEGF)	
0.0 100.00		70.000	90.000
GR[6](GAPI)		GRSG[6](GAPI)	
0.0 100.00		0.0	200.00
CCL		TEMP(DEGF)	
-19.00 1.0000		70.000	90.000
GR (GAPI)		GR (GAPI)	
0.0 100.00		0.0	2000.0

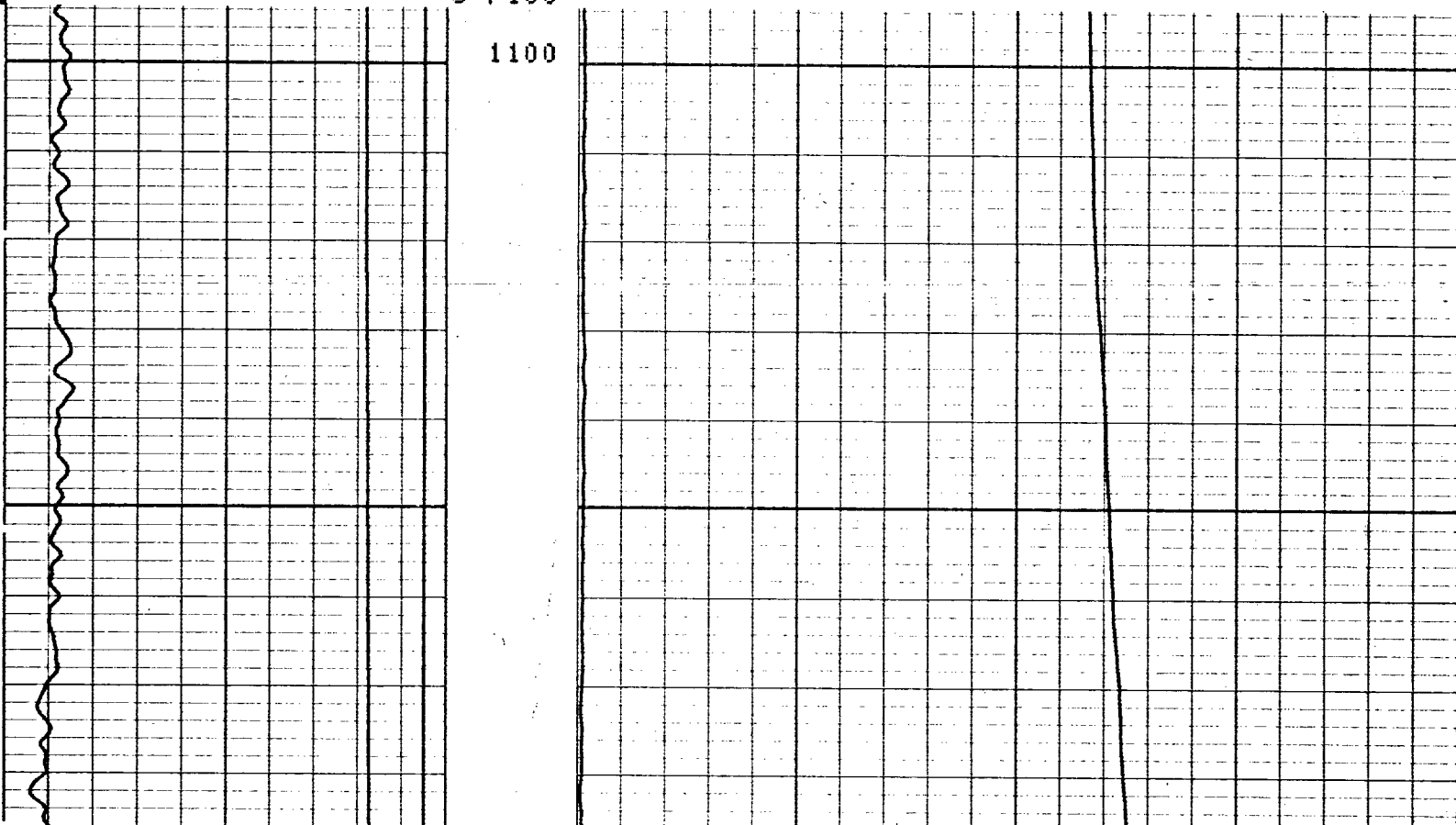
CP 30.4

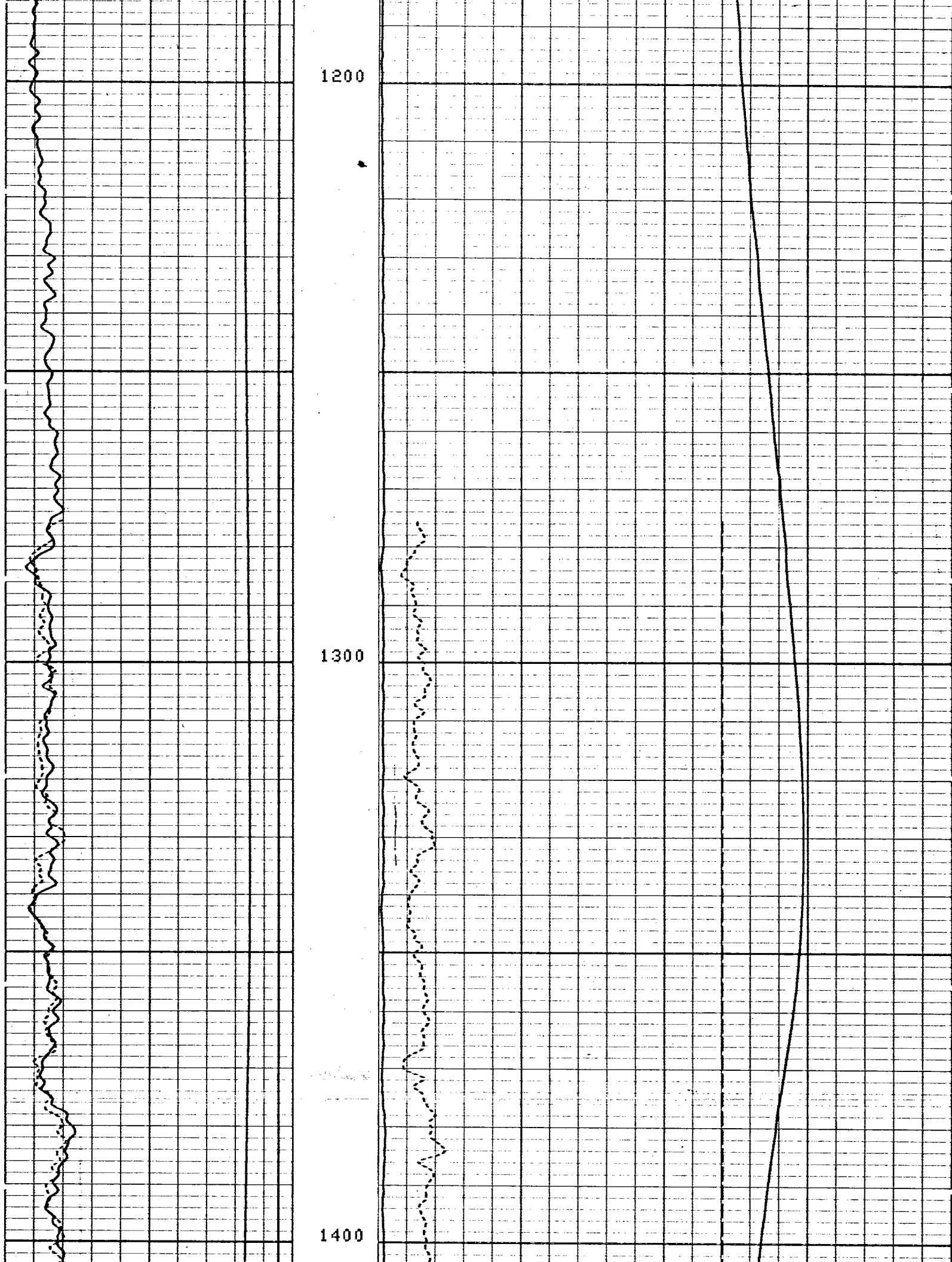
FILE 9

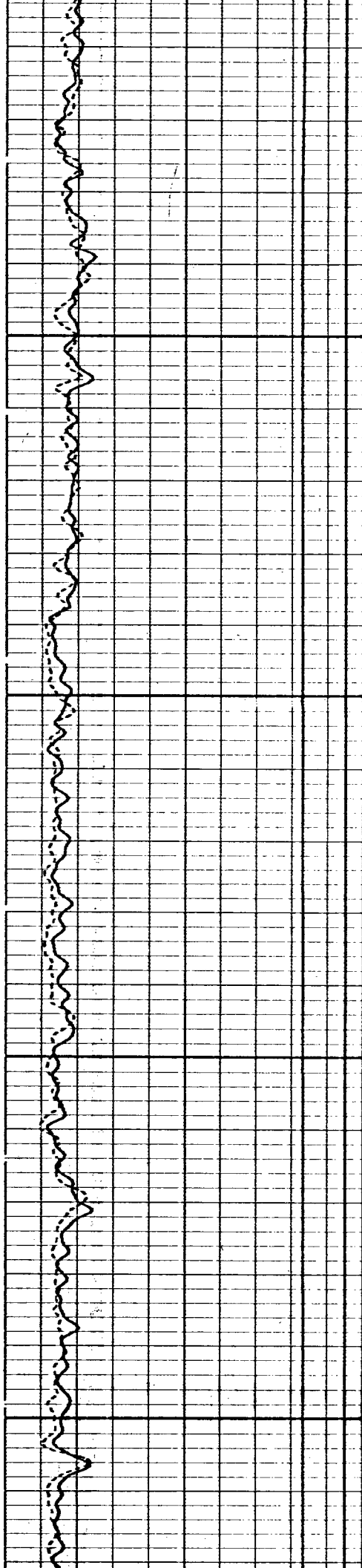
15-MAY-89 22:55

5"/100'

1100

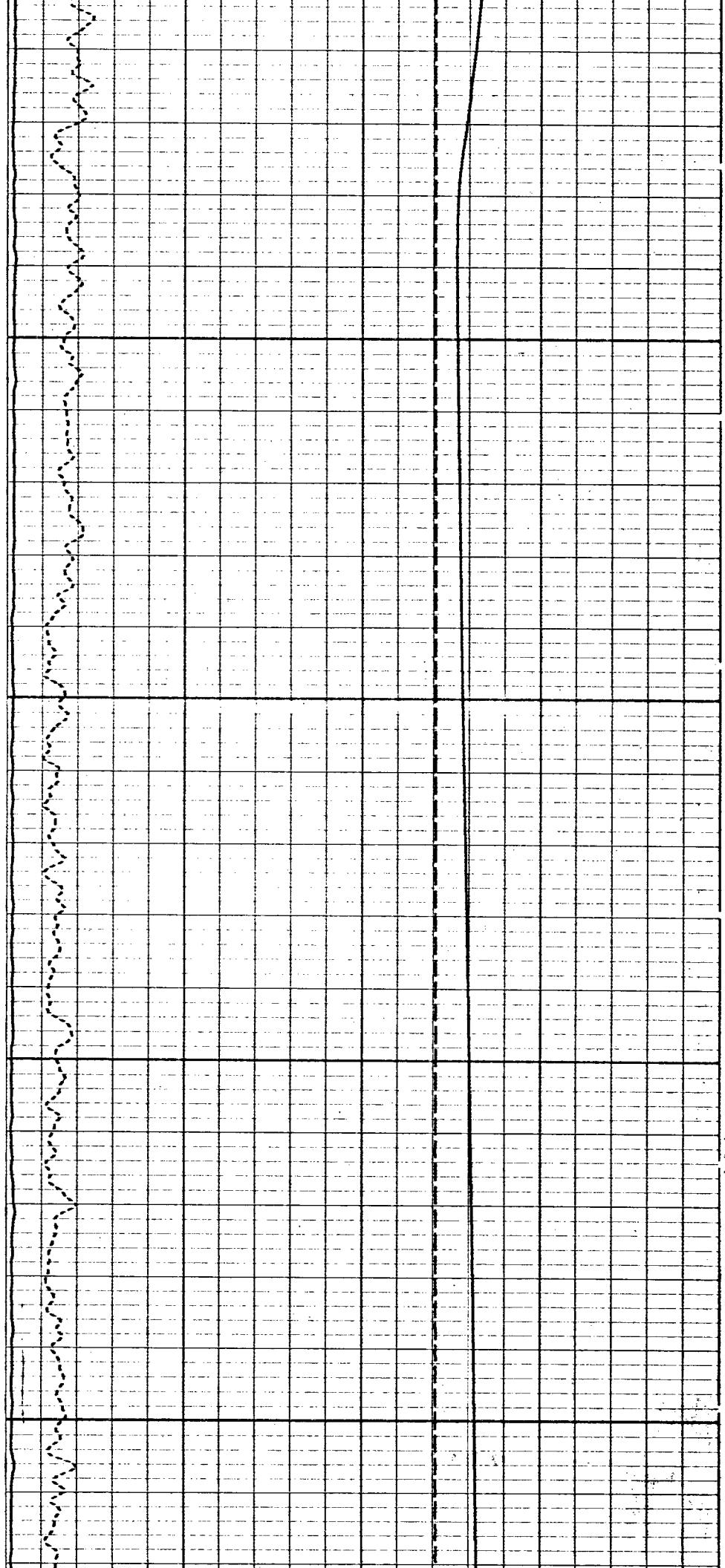


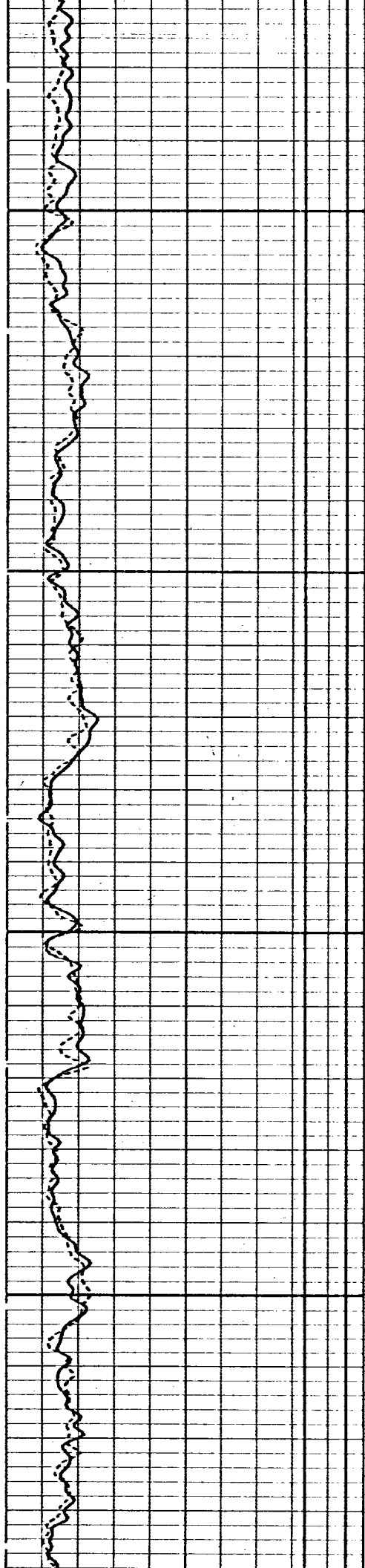




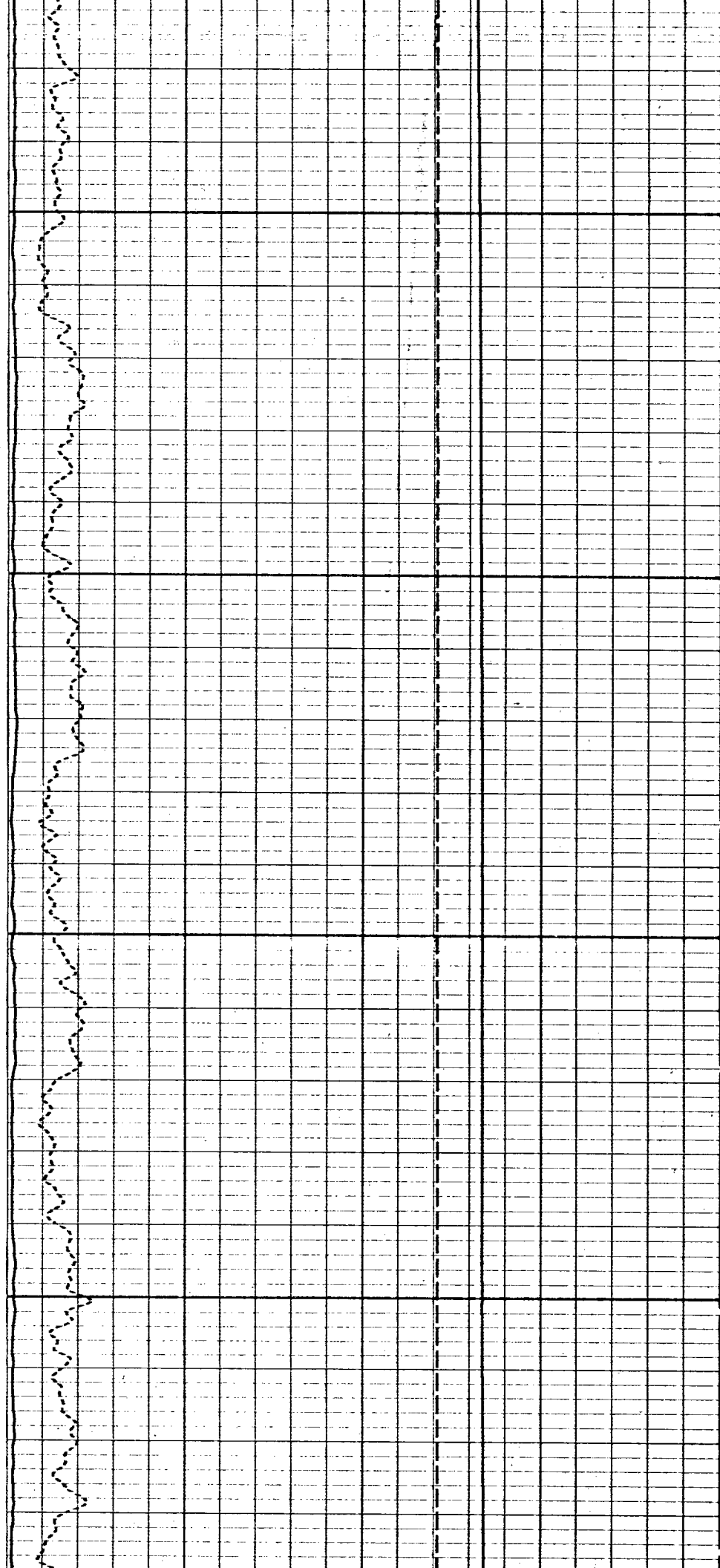
1500

1600

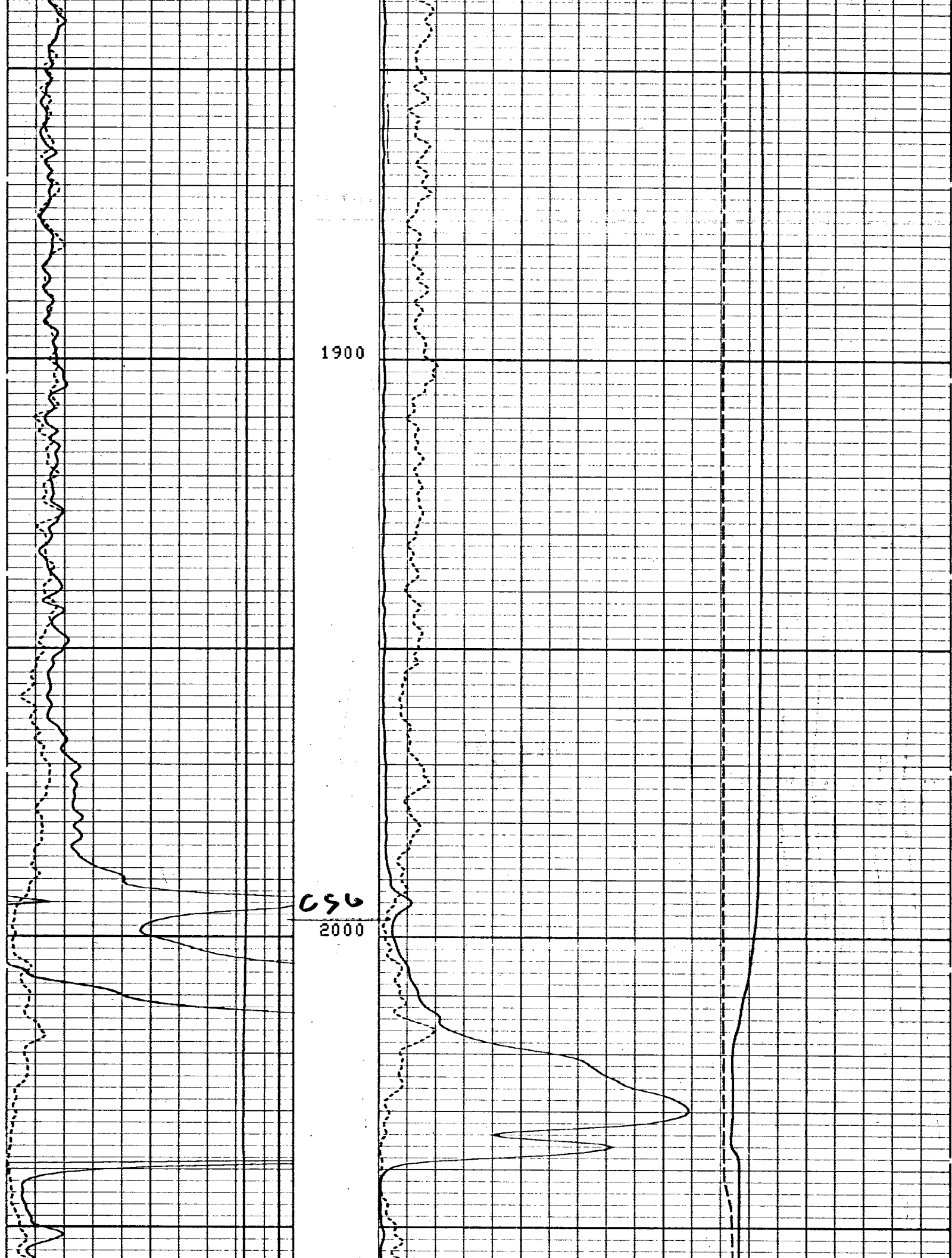


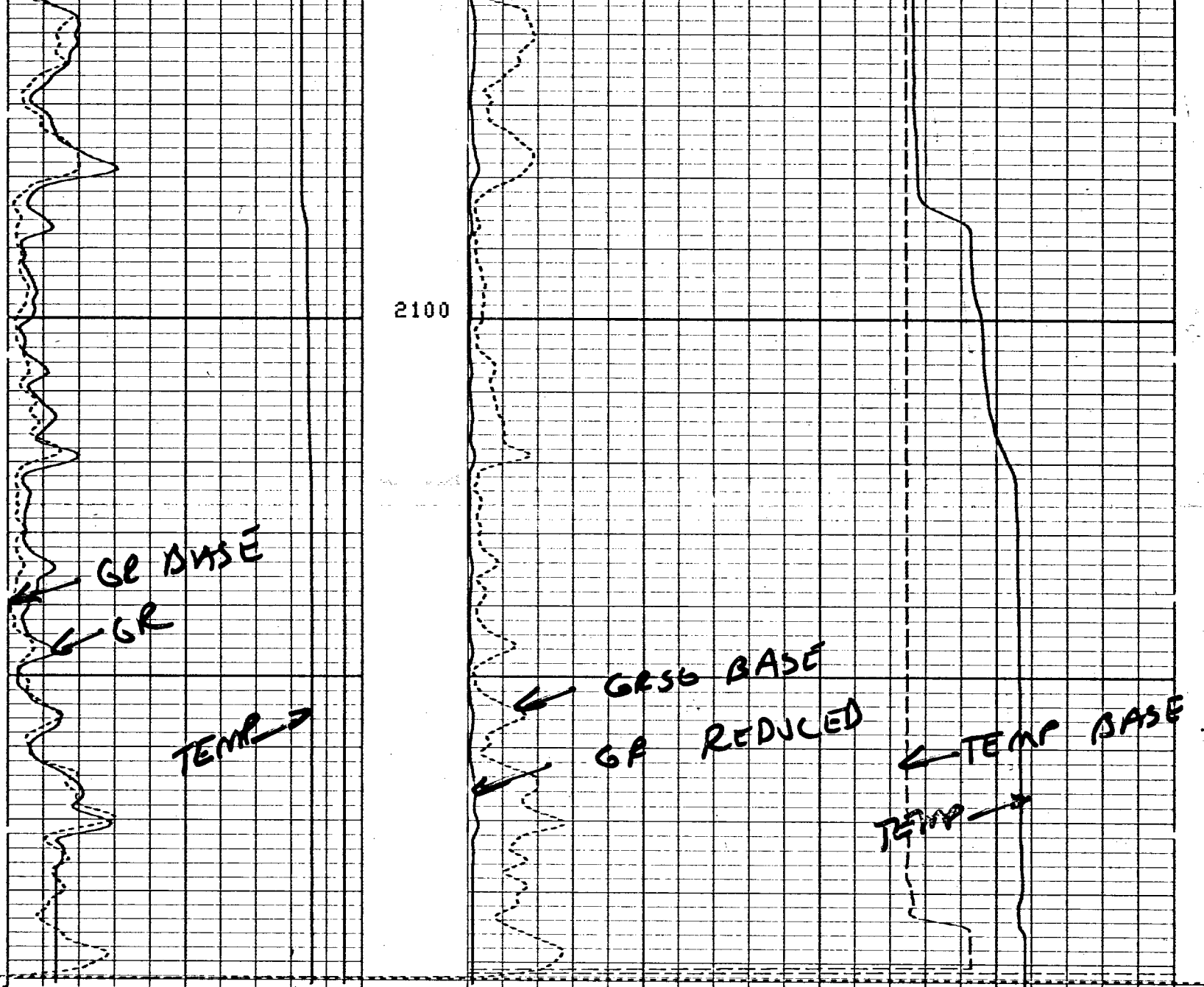


1700



1800





2100

GR BASE
GR

TEMP →

GRSG BASE
GR REDUCED

TEMP BASE
TEMP →

5"/100"

CP 30.4

FILE 9

15-MAY-89 22:22

TEMP(DEGF)		TEMP[6](DEGF)	
0.0 100.00		70.000 90.000	
GR[6](GAPI)		GRSG[6](GAPI)	
0.0 100.00		0.0 200.00	
CCL		TEMP(DEGF)	
-19.00 1.0000		70.000 90.000	
GR (GAPI)		GR (GAPI)	
0.0 100.00		0.0 2000.0	

SENSOR MEASURE POINT TO TOOL ZERO

EXP1	0.0	FEET	GR	10.3	FEET
EXP3	0.0	FEET	EXP2	0.0	FEET
TENS	-5.0	FEET	EXT	0.0	FEET
CCL	19.2	FEET	CVEL	0.0	FEET
MP	1.1	FEET	TEMP	2.5	FEET
DTEM	2.5	FEET			

PARAMETERS

NAME	VALUE	UNIT	NAME	VALUE	UNIT
BS	8.00000	IN	BHS	CASE	
QIQP	FLOW		TCSH	0.0	IN
VPCF	.830000		FDSH	0.0	G/C3
NTHR	-10.0000	F/MN	TIRA	.500000	
FCHD	CSID		PTHR	10.0000	F/MN
SGSN	0000A-00011		CDAT		
WMUD	8.30000	LB/G			

REMARKS:

TRACER LOGGED 13-MAY-89
 PUMPED IN APPROX. 2400GALS
 SURFACE PRESSURE APPROX. 10.5 PSIS
 THANK YOU FOR USING SCHLUMBERGER!!!

PARAMETERS

NAME	VALUE	UNIT	NAME	VALUE	UNIT
PP	NORM		DO	0.0	F
WMUD	8.30000	LB/G	SGSN	0000A-00011	
CDAT			FCHD	CSID	
PTHR	10.0000	F/MN	NTHR	-10.0000	F/MN
TIRA	.500000		VPCF	.830000	
FDSH	0.0	G/C3	QIQP	FLOW	
TCSH	0.0	IN	BS	8.00000	IN
BHS	CASE				

DATA NOT RECORDED

SENSOR MEASURE POINT TO TOOL ZERO

DTEM	2.5	FEET	MP	1.1	FEET
TEMP	2.5	FEET	CCL	19.2	FEET
CVEL	0.0	FEET	TENS	19.2	FEET
EXT	0.0	FEET	EXP3	0.0	FEET
EXP2	0.0	FEET	EXP1	0.0	FEET
GR	10.3	FEET			

0.0	100.00	0.0	2000.0
GR (GAPI)		GR (GAPI)	
-19.00	1.0000	70.000	90.000
CCL		TEMP(DEGF)	
0.0	100.00	0.0	200.00
GR[6](GAPI)		GRSG[6](GAPI)	
0.0	100.00	70.000	90.000
TEMP(DEGF)		TEMP[6](DEGF)	

INPUT FILES

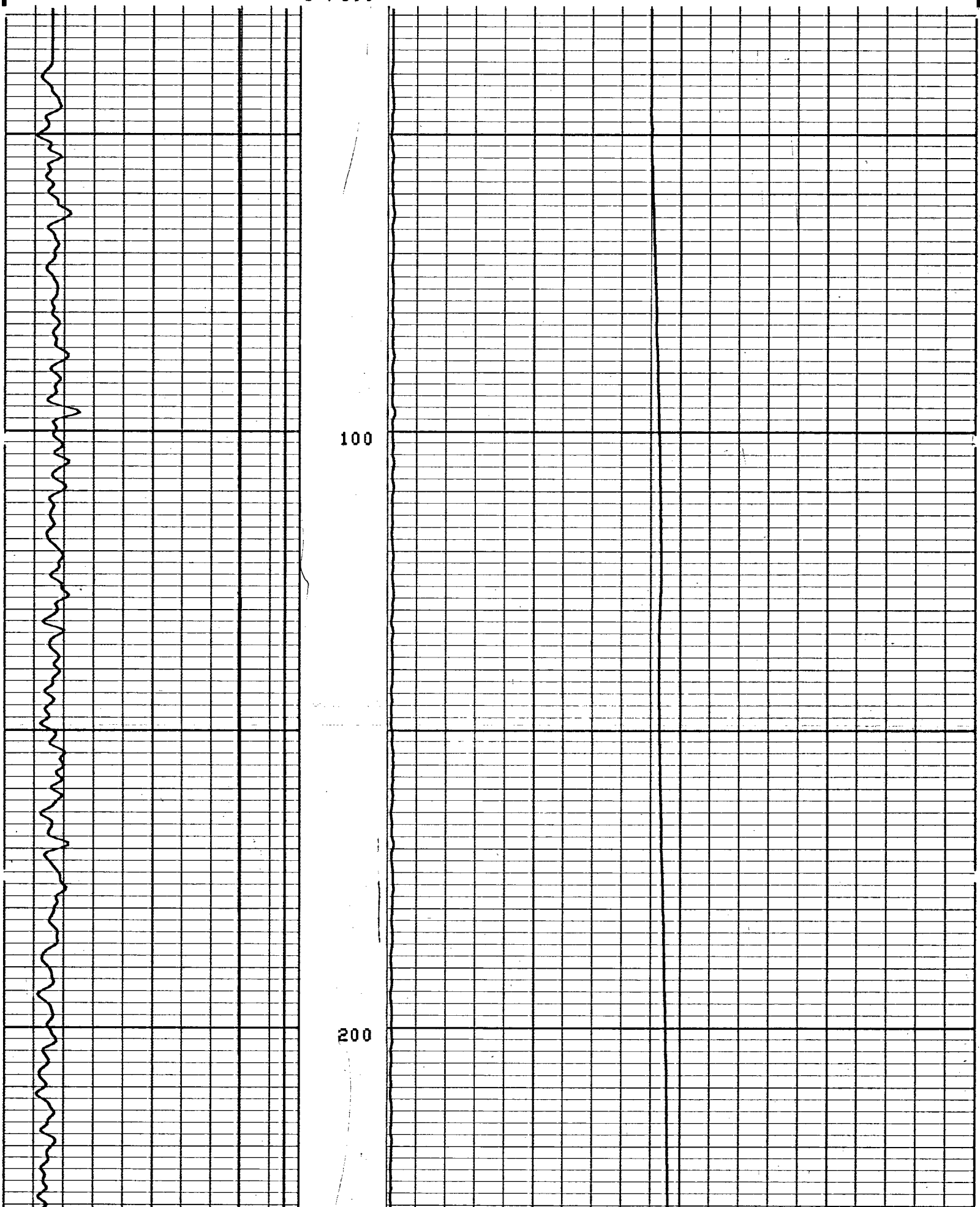
DATA ACQUIRED

CP 30.4

FILE 7

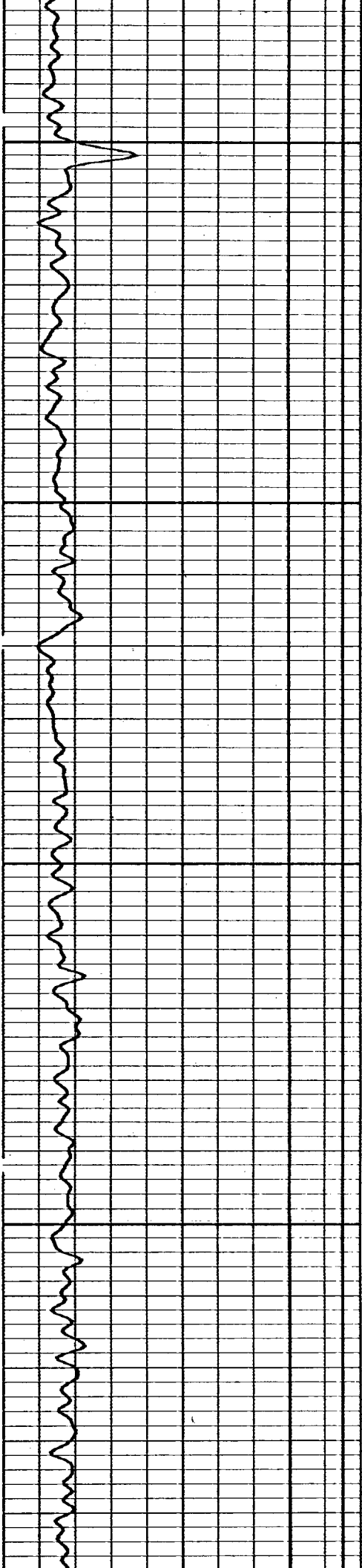
15-MAY-89 21:40

5"/100'



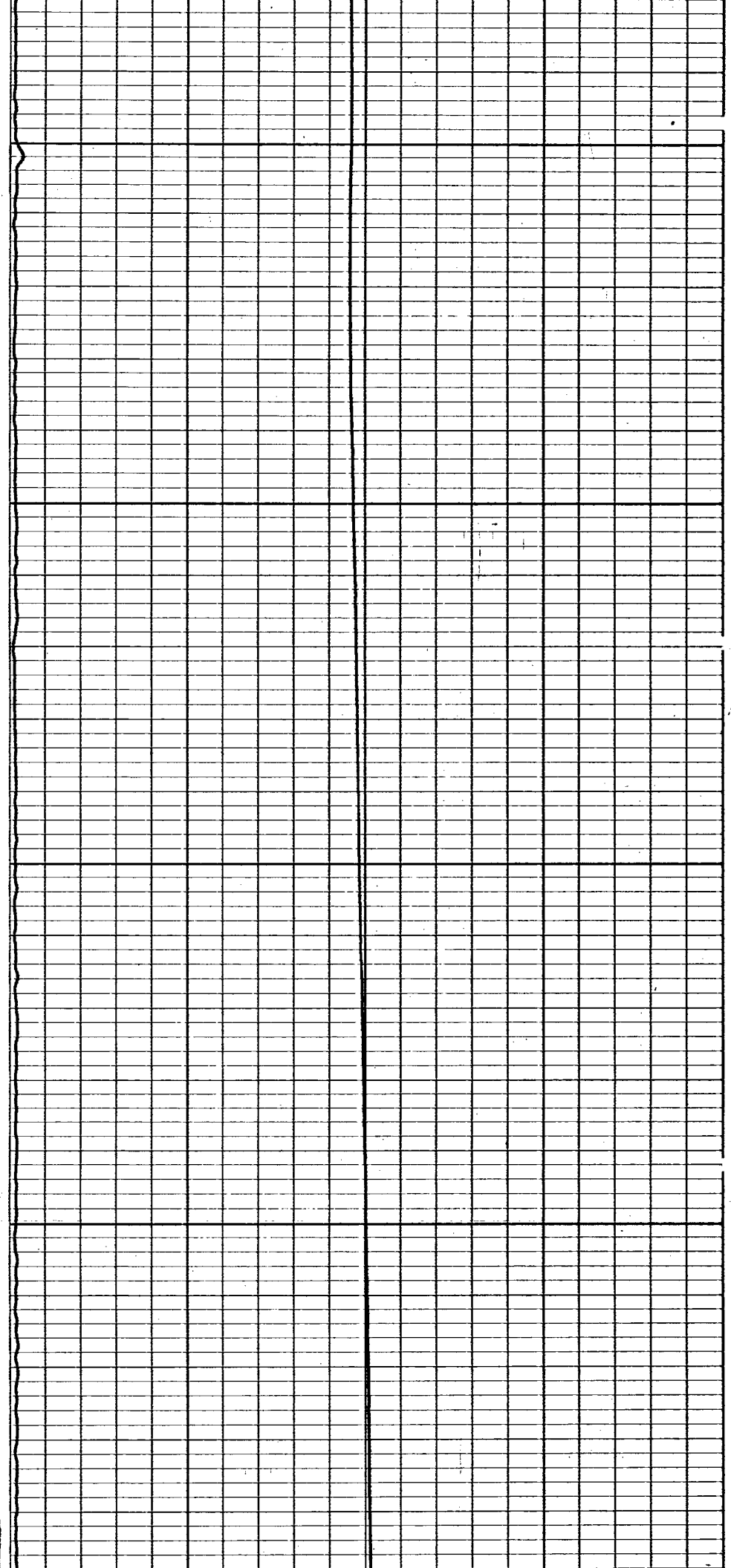
100

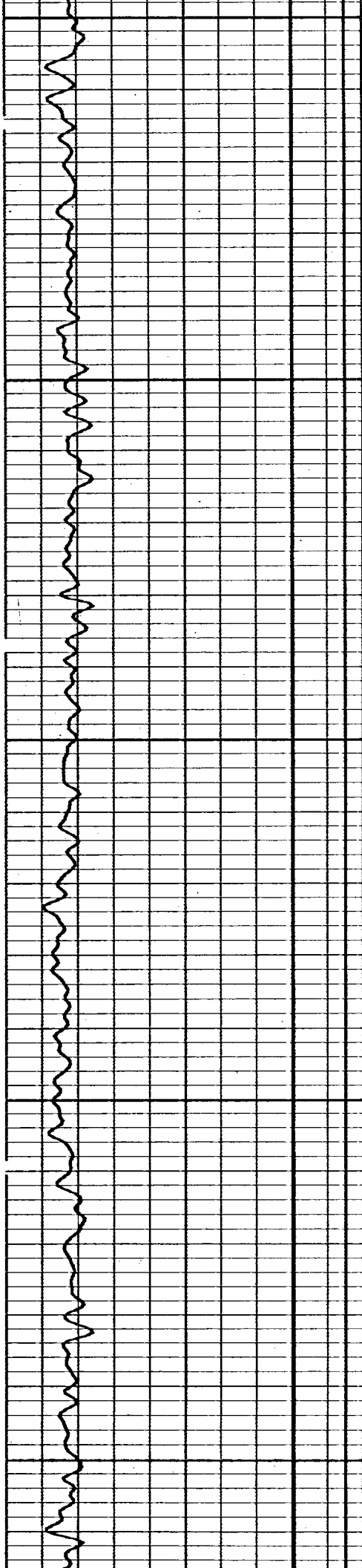
200



300

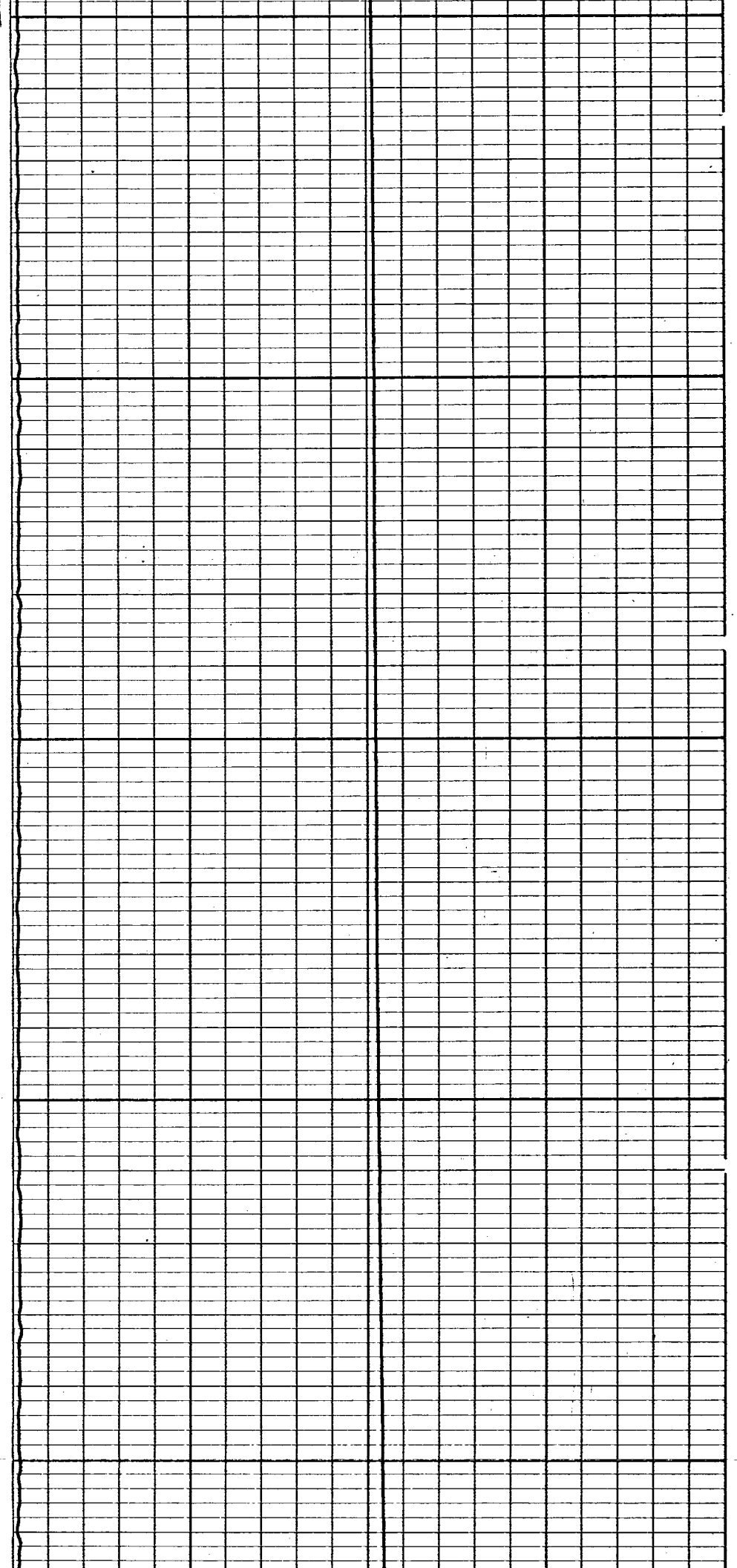
400

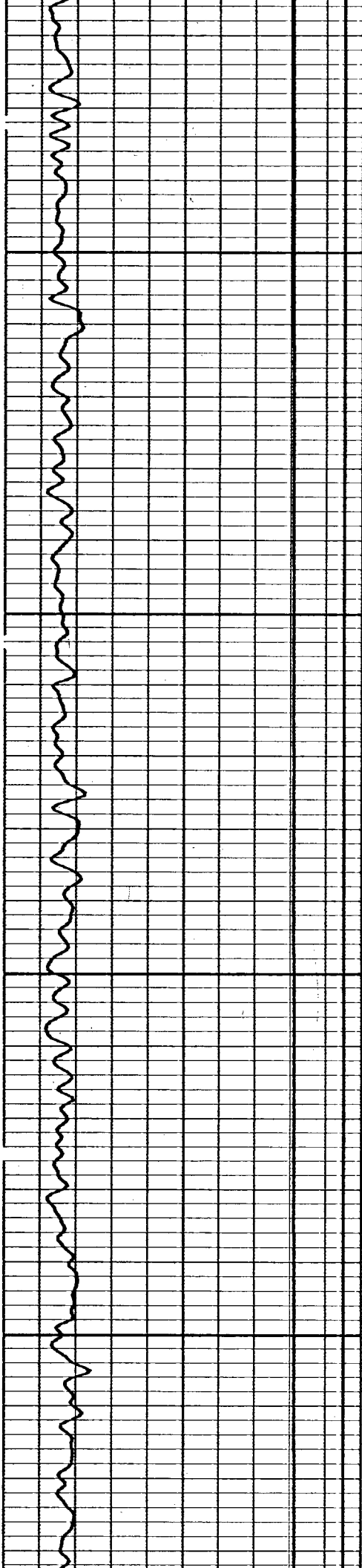




500

600

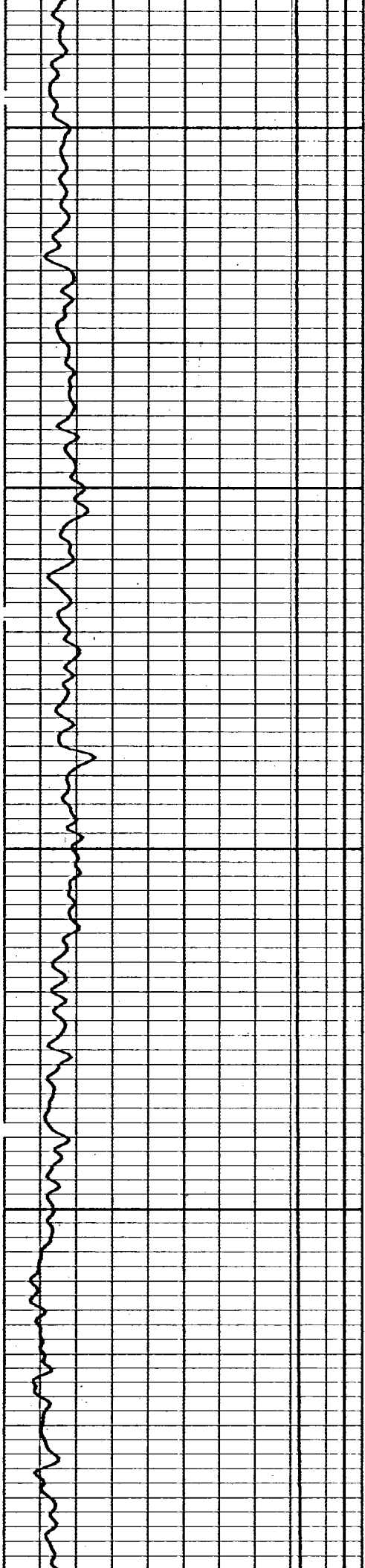




700

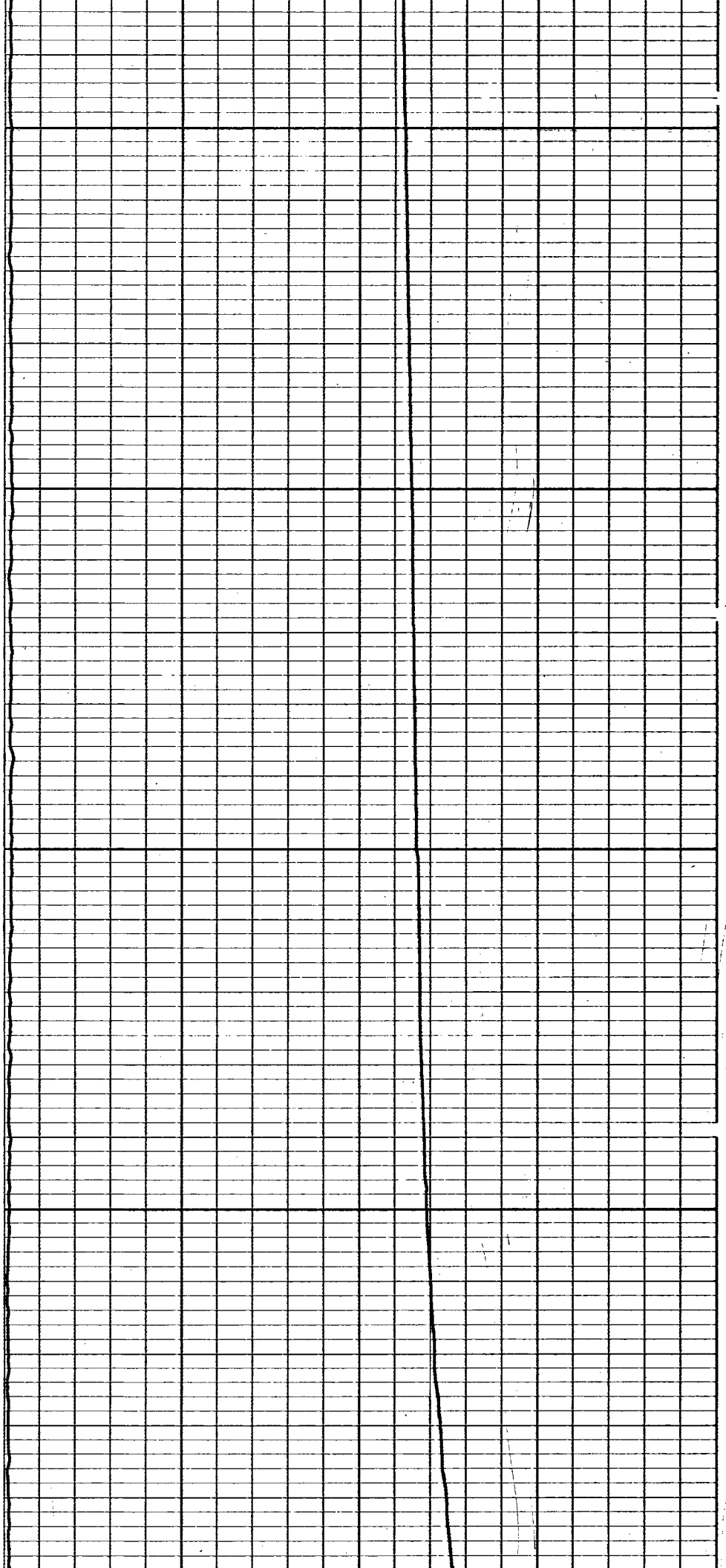
800





900

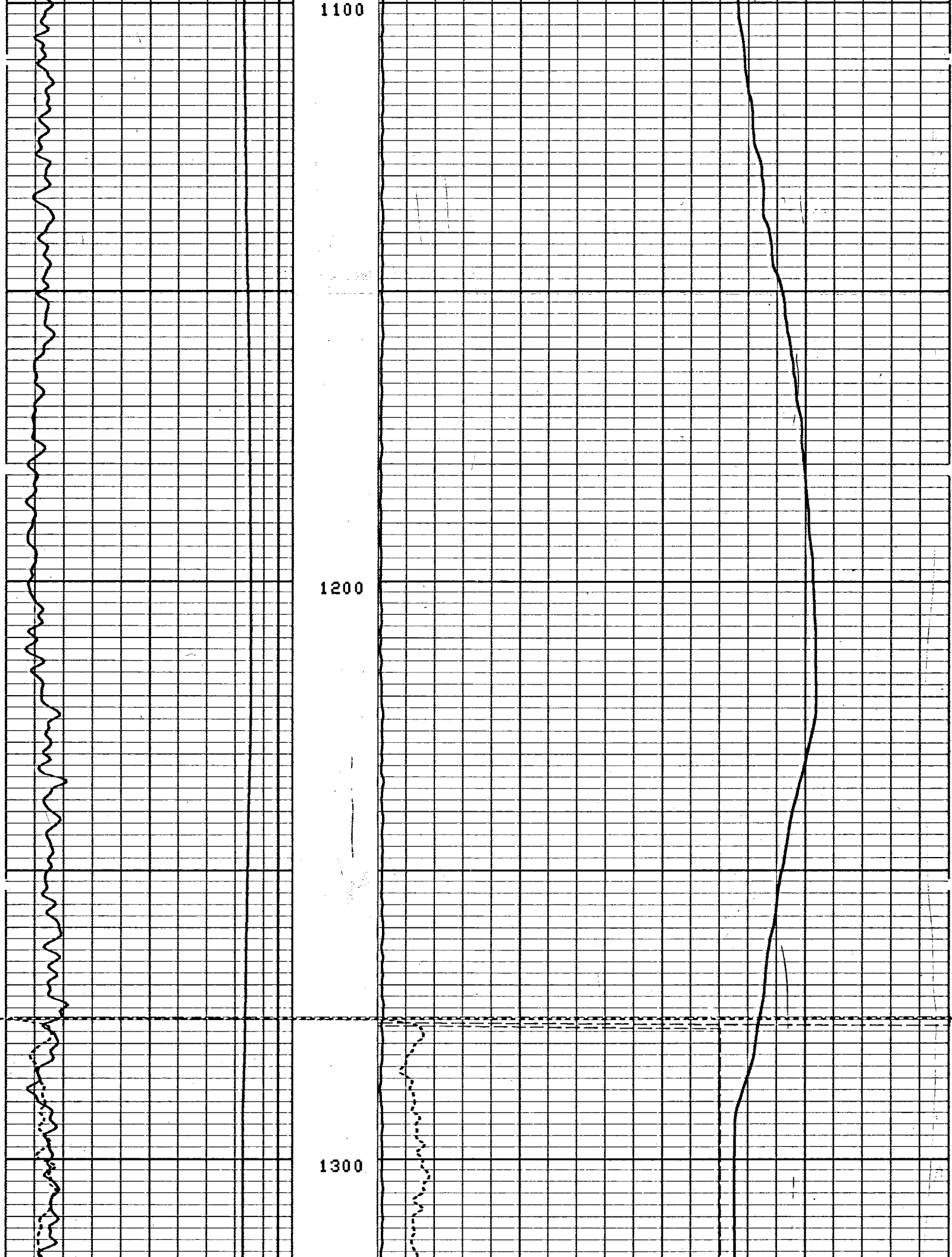
1000

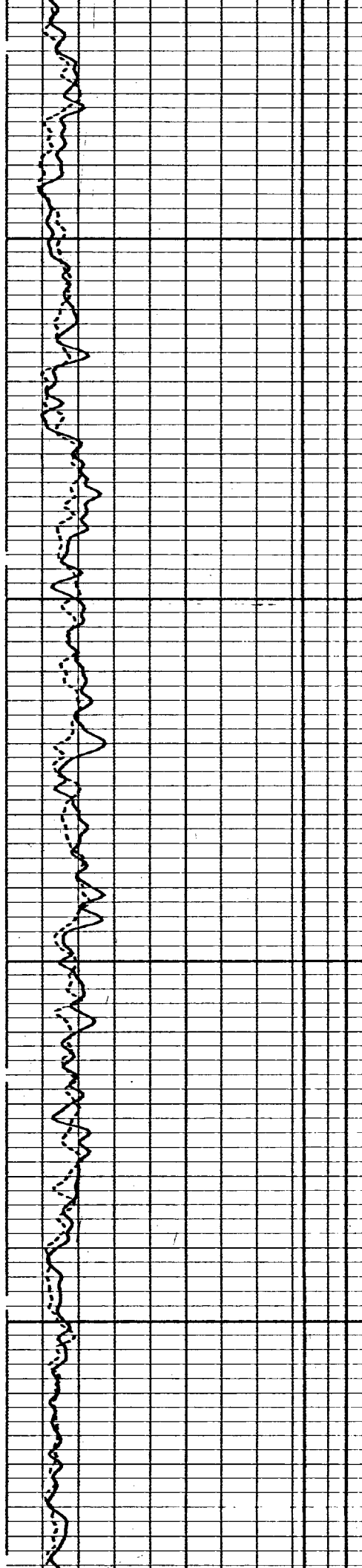


1100

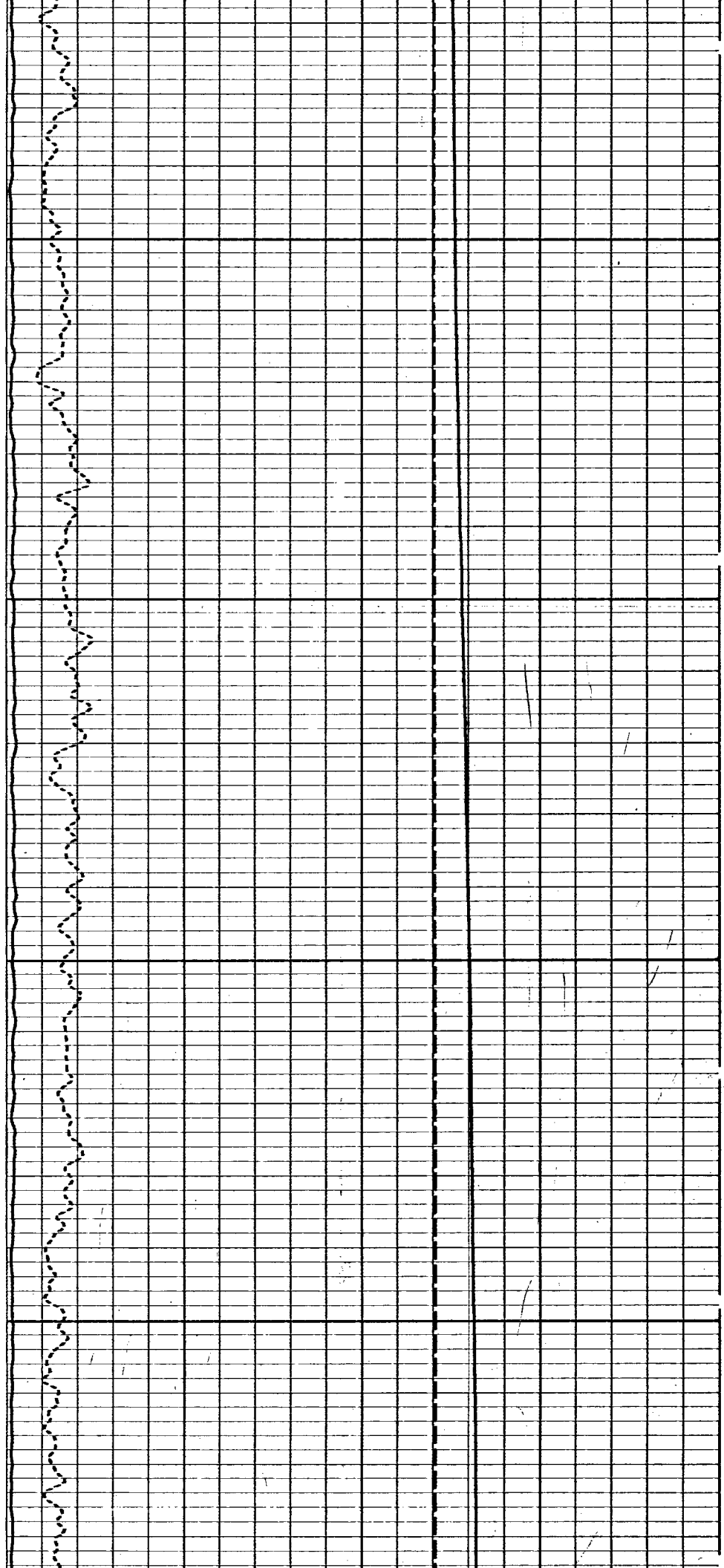
1200

1300

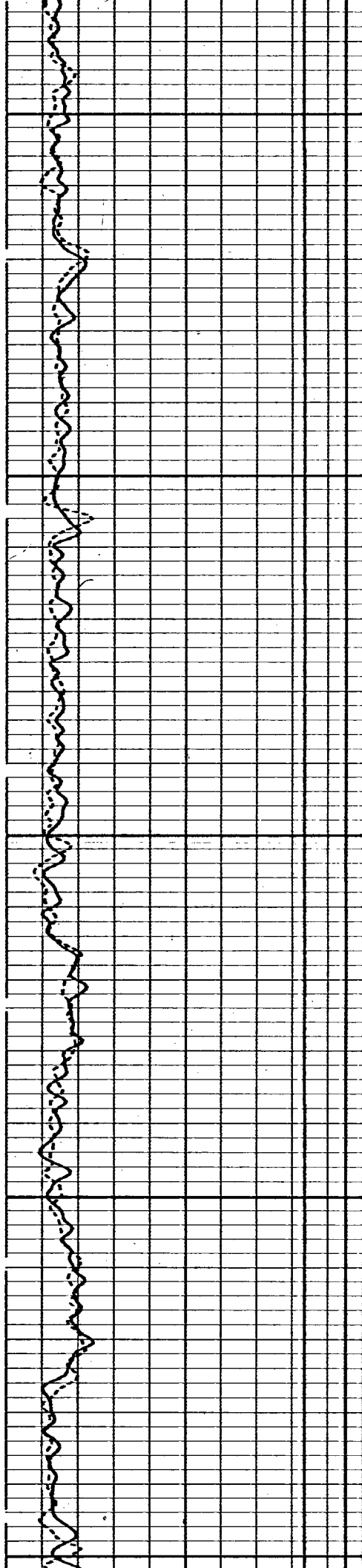




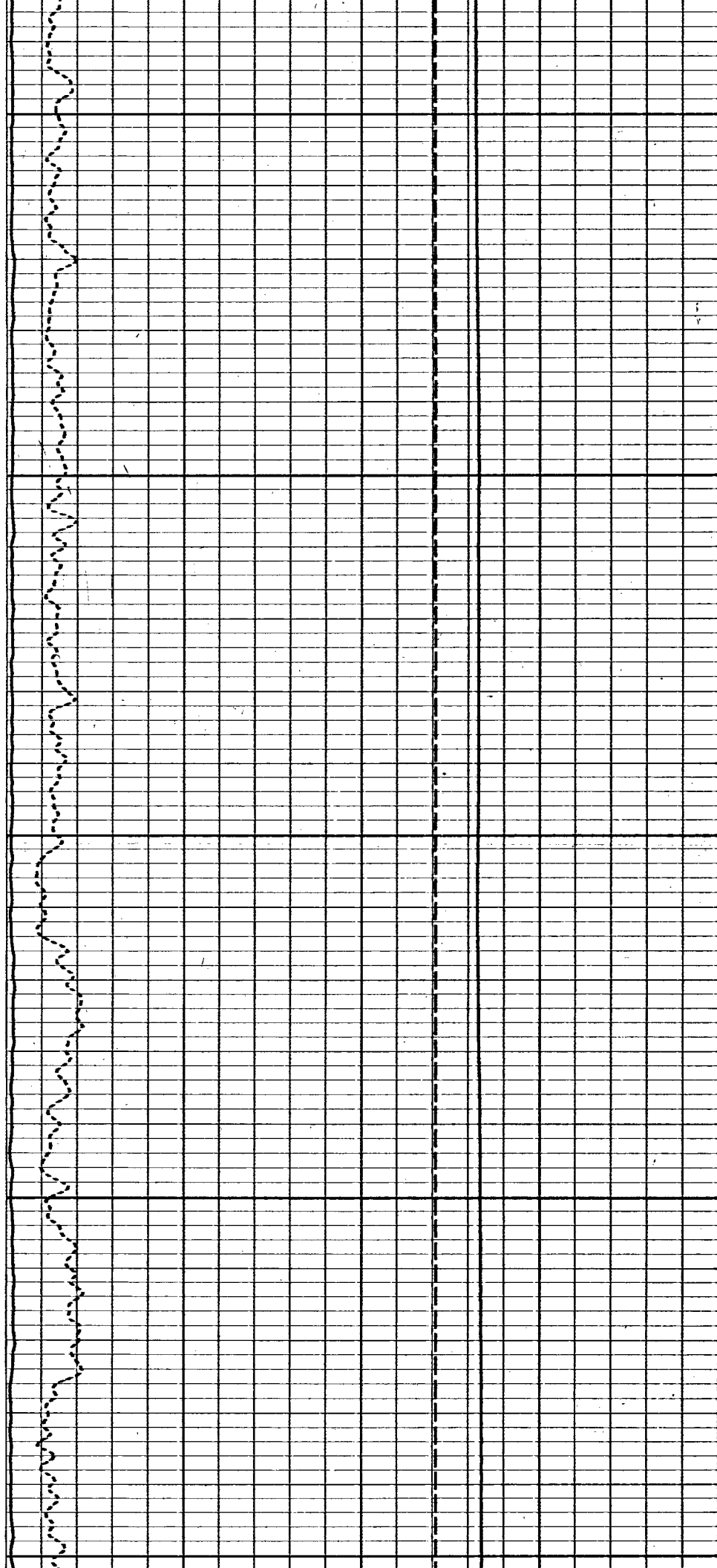
1400



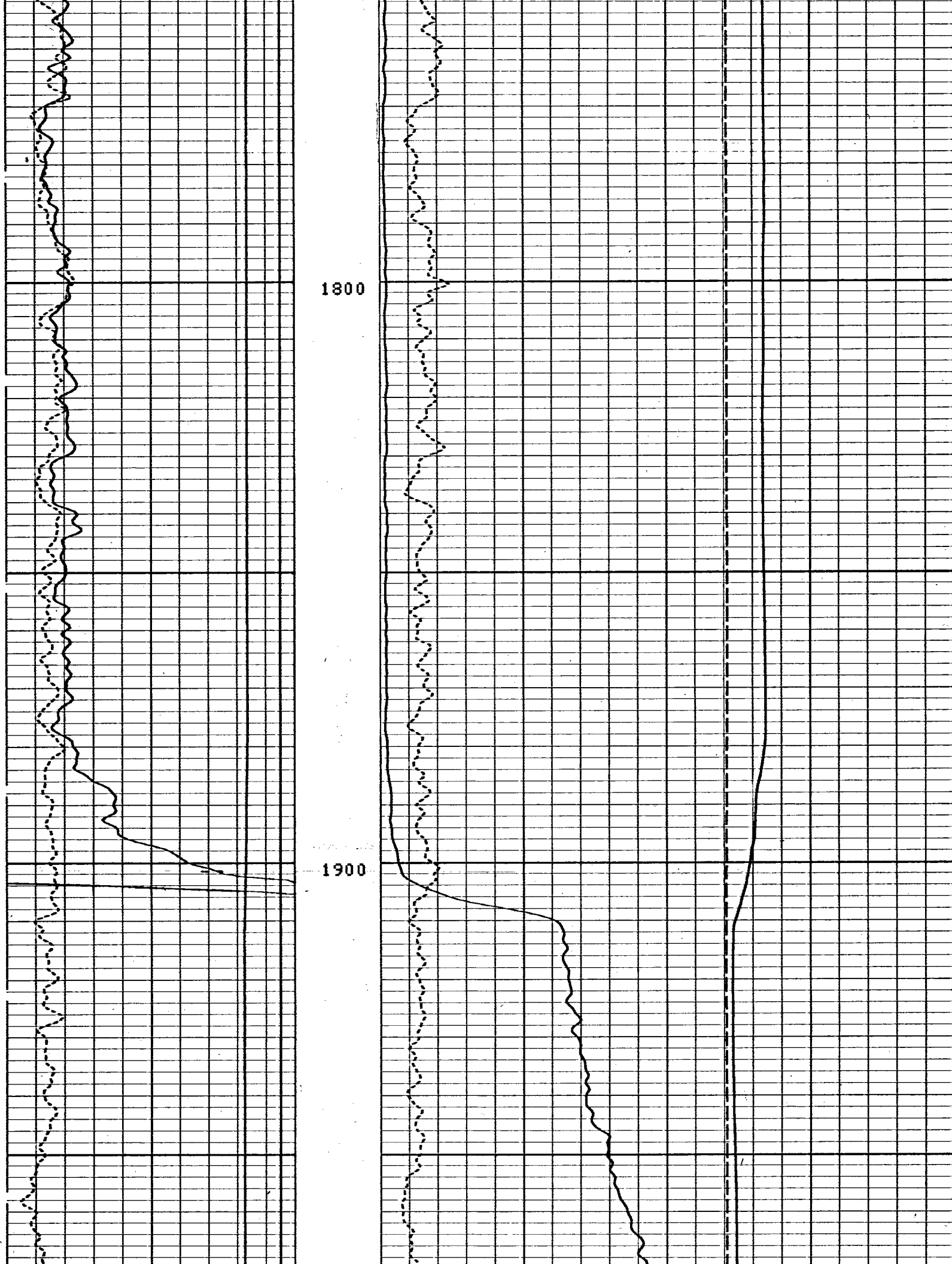
1500

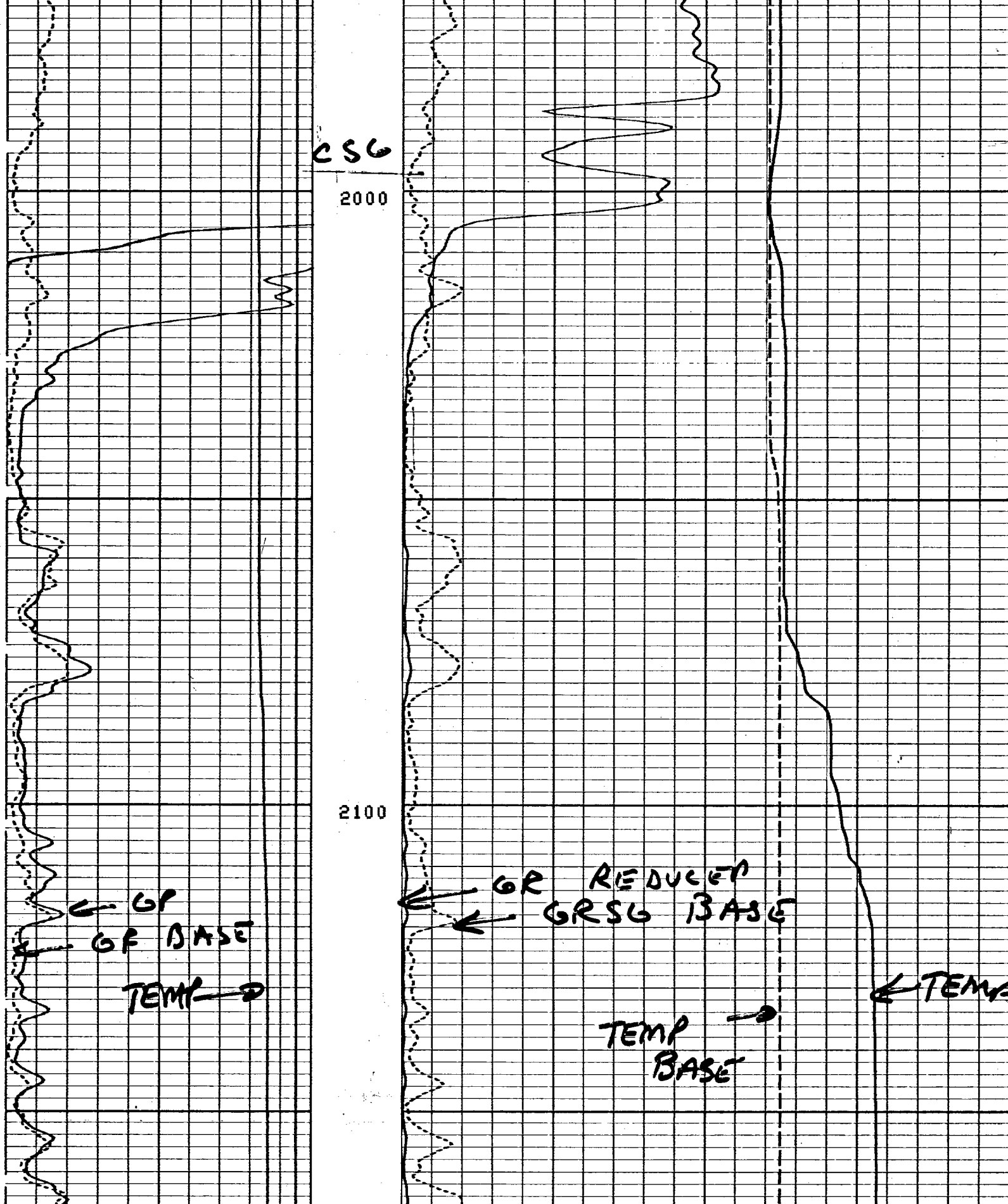


1600



1700





5"/100"

INPUT FILES

4

DATA ACQUIRED

15-MAY-89 21:30

CP 30.4

FILE 7

15-MAY-89 21:46

0.0	100.00	0.0	2000.0
GR (GAPI)		GR (GAPI)	
-19.00	1.0000	70.000	90.000
CCL		TEMP(DEGF)	
0.0	100.00	0.0	200.00
GR[6](GAPI)		GRSG[6](GAPI)	
0.0	100.00	70.000	90.000
TEMP(DEGF)		TEMP[6](DEGF)	

DATA ACQUIRED LOGGING DOWN

COMPANY	HYDRO DESIGN	SCHL. FR	2165.0 F
		SCHL. TD	2165.0 F
WELL	D. B. LEE	DRLR. TD	2500.0 F
FIELD	MELBOURNE	Elev:	KB
COUNTY	BREVARD		DF
	STATE		FLORIDA
			GL

Schlumberger

TEMPERATURE - GAMMA RAY LOG