



**YOUNGQUIST BROTHERS, Inc**  
GEOPHYSICAL LOGGING DIVISION

**FLUID CONDUCTIVITY TEMPERATURE LOG**

Company **ROWE DRILLING**  
Well **CPS-4 SZMW-2 (L1038)**  
Field **CAPE CORAL**  
County **LEE**  
State **FL**

Company **ROWE WELL DRILLING CO.**  
Well **CPS-4 SZMW-2 (L1038)**  
Field **CAPE CORAL**  
County **LEE**  
State **FL**

Location **CAPE CORAL WATER UTILITIES DEPT. MWH**

Permanent Datum **GL**  
Log Measured From **GL**  
Drilling Measured From **KB**

Elevation **NA**

Other Services **SEE COMMENTS**

Date	17-DEC-2008						
Run Number	SIX						
Depth Driller	900'						
Depth Logger	900'						
Bottom Logged Interval	900'						
Top Log Interval	CASING						
Open Hole Size	11"						
Type Fluid	WATER						
Density / Viscosity	NA						
Max. Recorded Temp.	NA						
Estimated Cement Top	NA						
Time Well Ready	0900						
Time Logger on Bottom	0945						
Equipment Number	103						
Location	FT MYERS						
Recorded By	FULLER						
Witnessed By	B. FAIT						
Borehole Record							
Run Number	Bit	From	To	Run No.	Bit	From	To
ONE	25"	SURFACE	40'				
TWO	16"	CASING	525'				
THREE	11"	CASING	900'				
Casing Record			Top			Bottom	
Surface String	18"	Wgt/Ft	375 WT	SURFACE	36'		
Prod. String	12"	Wgt/Ft	375 W.T.	SURFACE	520'		
Production String							
Liner							

<<< Fold Here >>>

All interpretations are opinions based on inferences from electrical or other measurements and we cannot and do not guarantee the accuracy or correctness of any interpretation, and we shall not, except in the case of gross or willful negligence on our part, be liable or responsible for any loss, costs, damages, or expenses incurred or sustained by anyone resulting from any interpretation made by any of our officers, agents or employees. These interpretations are also subject to our general terms and conditions set out in our current Price Schedule.

**Comments**

Entered into  
**OCULUS**  
South District

DUAL INDUCTION  
X-Y CALIPER  
GAMMA RAY  
BOREHOLE COMPENSATED SONIC  
FLOW  
VIDEO

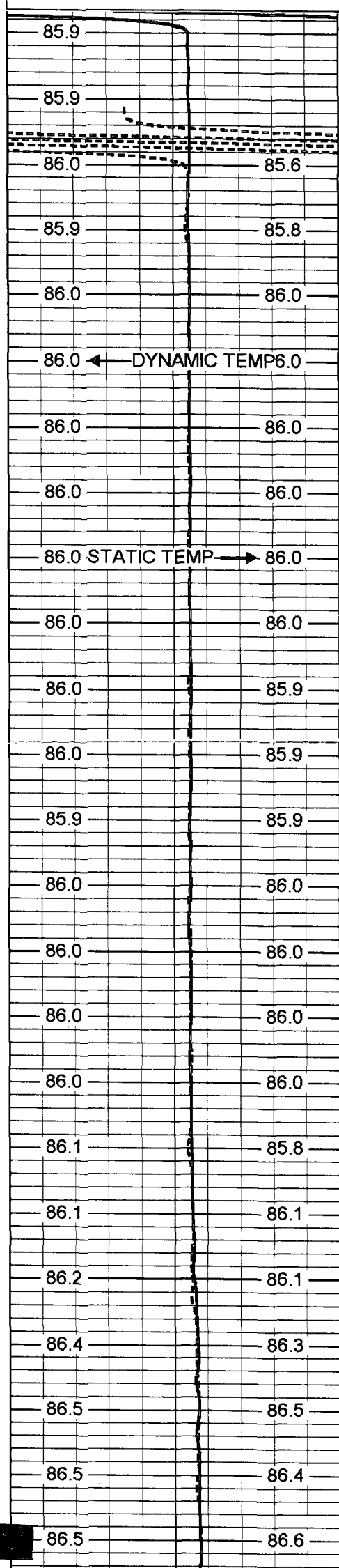


**DYNAMIC FCT**

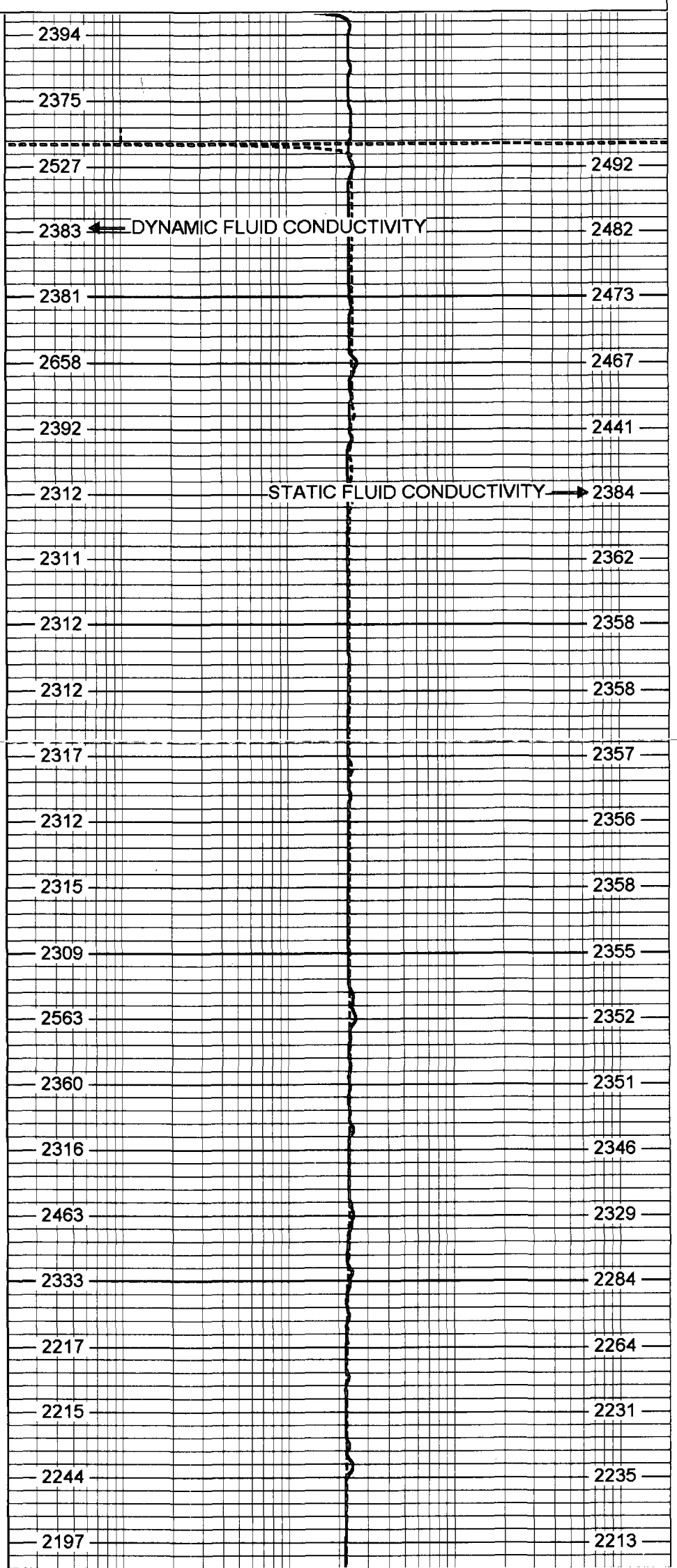
Database File: rowe.db  
Dataset Pathname: CPS4/STOZONE2/run3/pass15  
Presentation Format: frt\_mg  
Dataset Creation: Wed Dec 17 16:49:13 2008 by Log 6.2\_B4  
Charted by: Depth in Feet scaled 1:240

75 DYNAMIC TEMP (degF) 95  
 75 STATIC TEMP (degF) 95

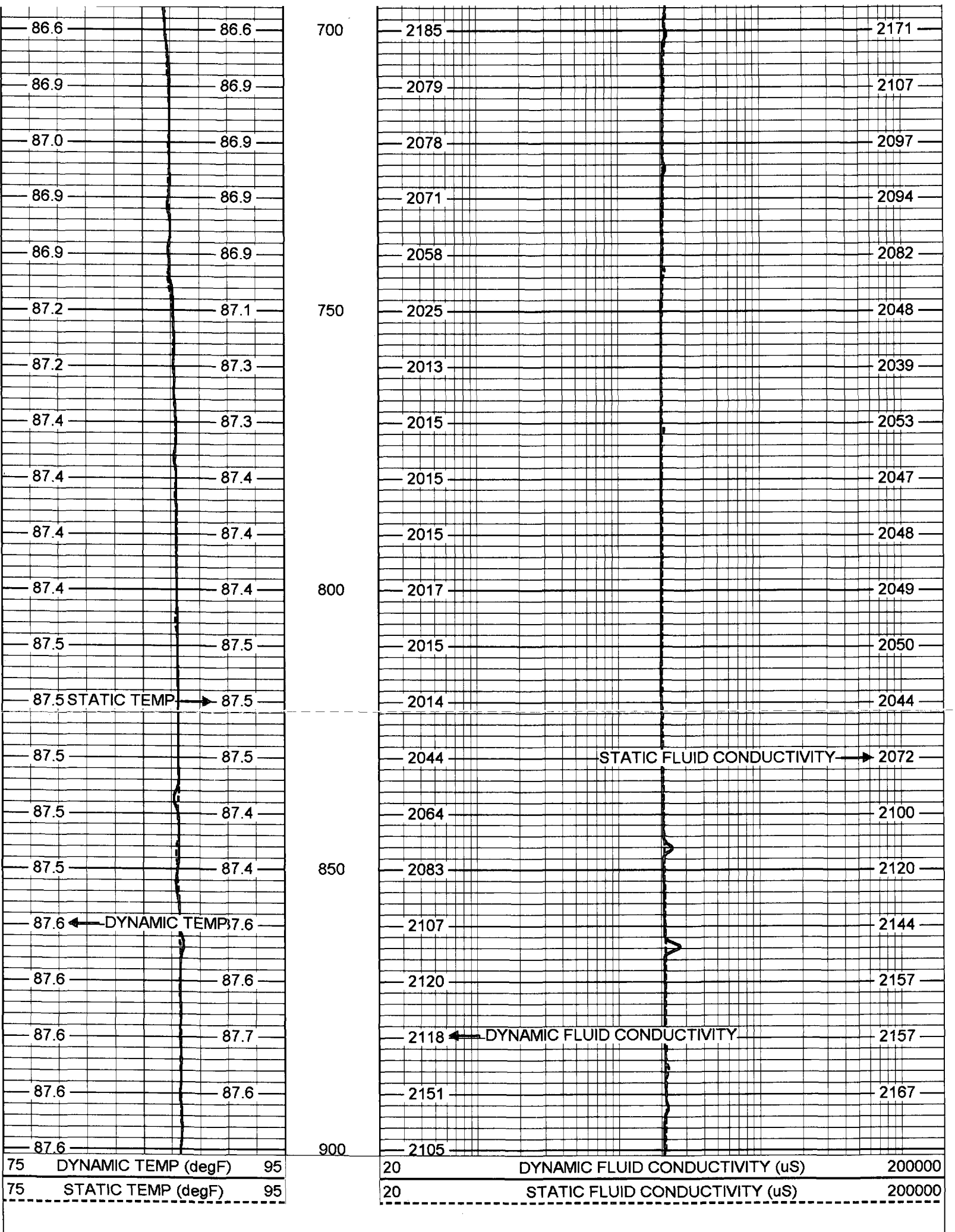
20 DYNAMIC FLUID CONDUCTIVITY (uS) 200000  
 20 STATIC FLUID CONDUCTIVITY (uS) 200000



500  
550  
600  
650

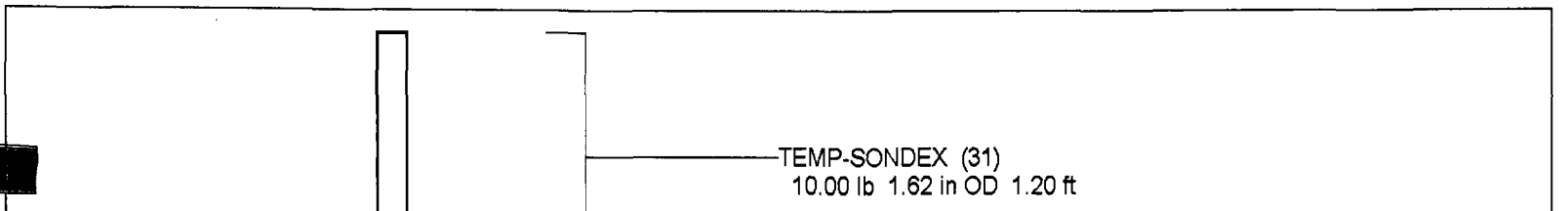


DYNAMIC FLUID CONDUCTIVITY  
 STATIC FLUID CONDUCTIVITY



75 DYNAMIC TEMP (degF) 95  
 75 STATIC TEMP (degF) 95

20 DYNAMIC FLUID CONDUCTIVITY (uS) 200000  
 20 STATIC FLUID CONDUCTIVITY (uS) 200000



TEMP 0.70 ft

FRES 0.50 ft



FRT-SONDEX (31)  
 10.00 lb 1.69 in OD 0.60 ft

Dataset: CPS4/STOZONE2/run3/pass15  
 Total Length: 1.80 ft  
 Total Weight: 20.00 lb  
 O.D. 1.69 in

FRT Calibration Report

Serial Number: 31  
 Tool Model: SONDEX  
 Performed: Mon Jun 09 10:53:41 2008

Point #	Reading		Reference
1	31.165	cps	1000.000
2	167.193	cps	10000.000
3	415.824	cps	25000.000
4	918.476	cps	50000.000
5		cps	
6		cps	

Temperature Calibration Report

Serial Number: 31  
 Tool Model: SONDEX  
 Performed: Mon Jun 09 10:53:33 2008

Point #	Reading		Reference	
1	152.99	cps	39	degF
2	330.989	cps	82	degF
3	688.237	cps	157	degF