

M/V Geophysical

FLUID CONDUCTIVITY TEMPERATURE LOG

Company: Diversified Drilling Corp.
Well: NSTS SZMW2 L1030
Field: Cape Coral
County: Lee
State/Prv: Florida

Company: Diversified Drilling Corporation
Well: NSTS SZMW2 L1030
Field: Cape Coral
County: Lee
State/Prv: Florida

Location: Cape Coral ASR Project - NSTS Site
 Cape Coral Water Utilities Department
 MWH

Permanent Datum: G.L.
Log Measured From: G.L.
Drilling Measured From: G.L.

Date: 19-MAR-2008
Run Number: FOUR
Depth Driller: 840'
Depth Logger: 810'
Bottom Logged Interval: 810'
Top Log Interval: 895'
Open Hole Size: 5.75"
Type Fluid: H₂O
Density / Viscosity: N/A
Max. Recorded Temp.: see FCT log
Estimated Cement Top: N/A
Time Well Ready: 10:00 3/19/2008
Time Logger on Bottom: 14:00 3/19/2008
Equipment Number: AT/GS-1
Location: Ft. Myers

Recorded By: S. Miller/Miller
Witnessed By: J. Epling/ENTRIX
Other Services: XY/GP.DIL
 FCT.3HC
 FLOW.DHTV

Core Number	Bit	From	To	Size	Weight	From	To
ONE	7.375"	35'	45'				
TWO	13.75"	35'	45'				
THREE	17.875"	45'	91'				
FOUR	17.875"	91'	91'				

Surface String	Size	Material	Top	Bottom
Surface String	20"	WT	SURFACE	35'
Prod. String	12"	PVC	SURFACE	450'
Production String	3" PVC		SURFACE	765'
Line			CC-L1030	

All interpretations are opinions based on inferences from electrical or other measurements and we cannot and do not guarantee the accuracy or correctness of any interpretation, and we shall not, except in the case of gross or willful negligence on our part, be liable or responsible for any loss, costs, damages, or expenses incurred or sustained by anyone resulting from any interpretation made by any of our officers, agents or employees. These interpretations are also subject to our general terms and conditions set out in our current Price Schedule.

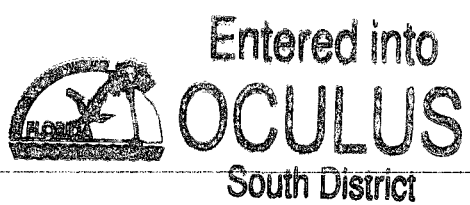
Comments

STATIC and DYNAMIC DOWN passes were performed.
 Cw=2,681 uS/cm @ 84.4 degF (Dynamic Sample). Q ≈ 60 gpm.
FLUID RESISTIVITY CALIBRATION REPORT (Performed: 13-MAR-08 10:45)

uS/cm	CPS
2022.2	2985.27
4400.2	2702.56
8829.3	2403.41

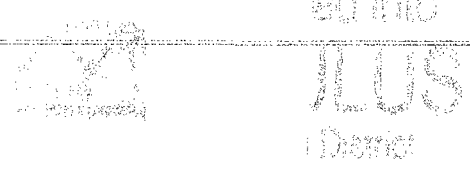
TEMPERATURE CALIBRATION REPORT (Performed: 13-MAR-08 10:15)

DEG-F	CPS
37.7	140.55
140.7	2675.3



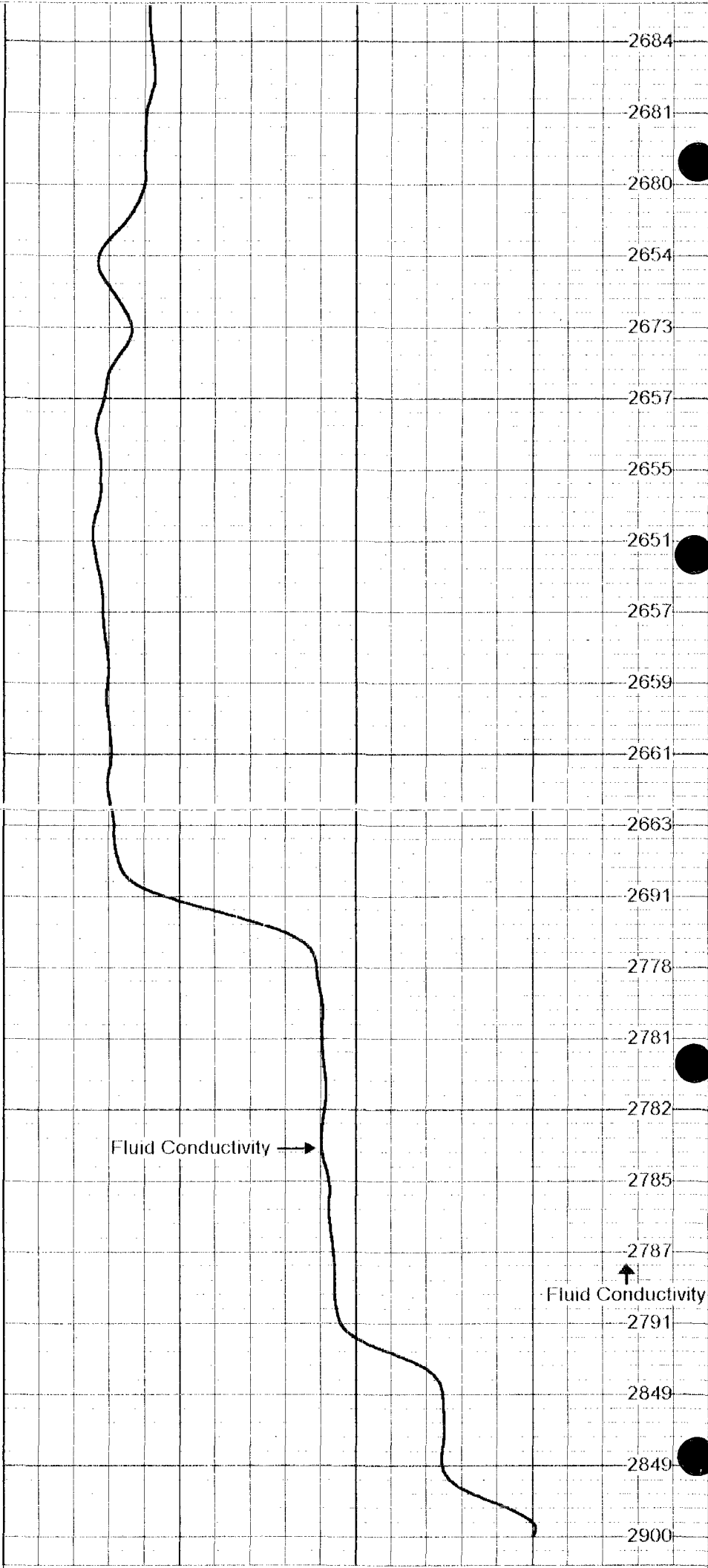
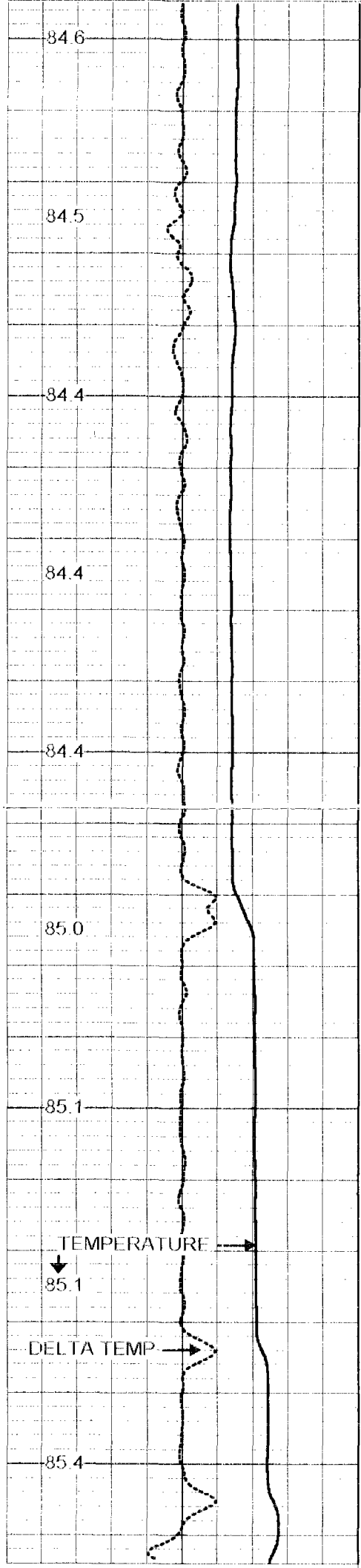
DYNAMIC FCT DOWN

Database File: cc-11030.db
 Dataset Pathname: run4/DFCT
 Presentation Format: tet21030.prs
 Dataset Creation: Wed Mar 19 15:05:53 2008
 Charted by: Depth in Feet scaled 1:240



78 TEMP (degF) 88
-0.5 DTMP (degF) 0.5

2600 FLUID CONDUCTIVITY (uS/cm) 3000



78 TEMP (degF) 88
-0.5 DTMP (degF) 0.5

2600 FLUID CONDUCTIVITY (uS/cm) 3000

<- CSG ->

700

800

900

<- TD ->

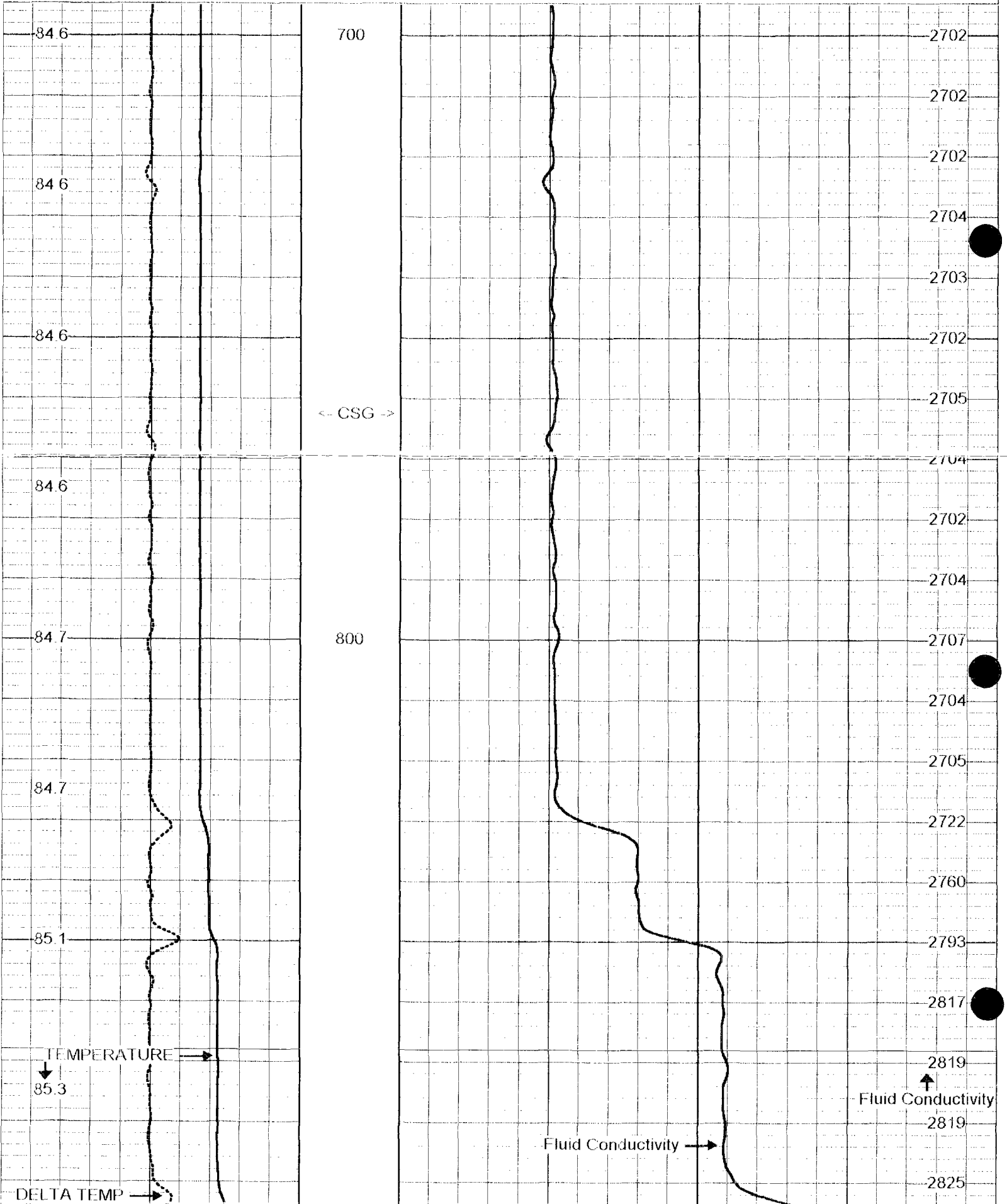
Fluid Conductivity →

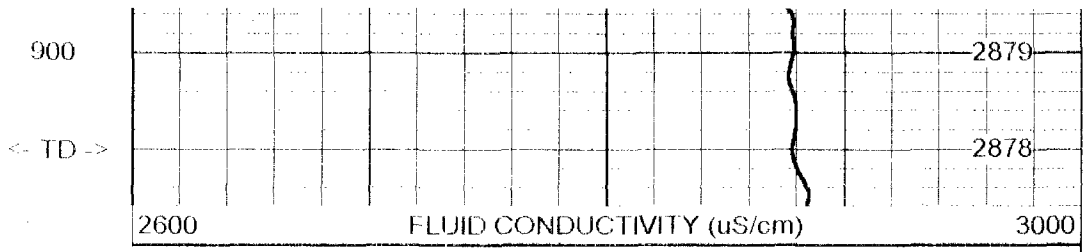
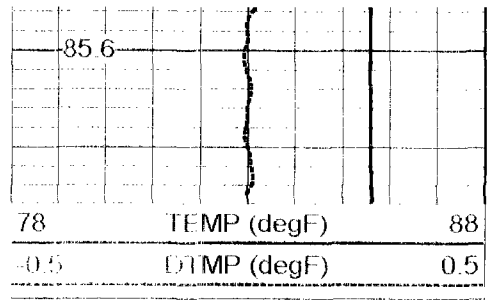
↑ Fluid Conductivity

STATIC FCT DOWN

Database File: cc-11030.db
 Dataset Pathname: run4/SFCT
 Presentation Format: fct21030.prs
 Dataset Creation: Wed Mar 19 14:52:23 2008
 Charted by: Depth in Feet scaled 1:240

78	TEMP (degF)	88	2600	FLUID CONDUCTIVITY (uS/cm)	3000
-0.5	DTMP (degF)	0.5			





Gamma Ray Calibration Report

Serial Number:	MV01B	
Tool Model:	RTSB	
Performed:	Wed Mar 19 14:31:37 2008	
Calibrator Value:	120	GAPI
Background Reading:	28.2777	cps
Calibrator Reading:	118.353	cps
Sensitivity:	1.33222	GAPI/cps

CCL 4.46 ft

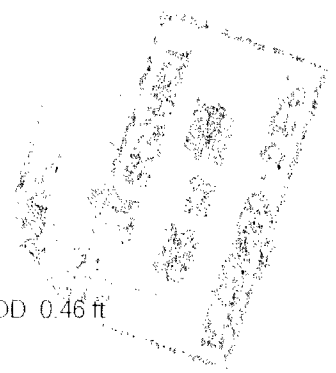
CCL-MVGS 1.9 (MV01) 8.00 lb 1.90 in OD 1.33 ft

GR#2 1.15 ft

GR #2 -RTSB (MV01B) 10.00 lb 1.90 in OD 3.33 ft

TEMP 0.10 ft

TEMP-RTS (MV01) 2.00 lb 1.90 in OD 0.46 ft



Dataset: run4/pass9
 Total Length: 5.12 ft
 Total Weight: 20.00 lb
 O.D: 1.90 in