



**FLUID CONDUCTIVITY  
TEMPERATURE  
LOG**

FORM Q-2003  
REV. 0-2003

Company Diversified Drilling Corp. Well Exploratory Well Field Naples County Collier State/Prv Florida	Company Diversified Drilling Corporation Well Exploratory Well Field Naples County Collier State/Prv Florida
Location Carcia Road WTP CDM	Other Services XY/GR BHC/DIL FLOW
Permanent Datum Log Measured From Drilling Measured From	G.L. G.L. G.L. Elevation K.B. D.F. G.L.

Date	29-OCT-2004						
Run Number	THREE						
Depth Driller	422'						
Depth Logger	421'						
Bottom Logged Interval	421'						
Top Log Interval	235'						
Open Hole Size	9"						
Type Fluid	WATER						
Density / Viscosity	NANA						
Max. Recorded Temp.	na						
Estimated Cement Top	NA						
Time Well Ready	08:00 10/29/04						
Time Logger on Bottom	08:00 10/29/04 S						
Equipment Number	MVGGS-1						
Location	Ft. Myers						
Recorded By	S. Miller						
Witnessed By	S. Day (CDM)						
Tubing Record							
Run Number	Bit	From	To	Size	Weight	From	To
ONE	7.875"	120'	420'				
TWO	16"	120'	288'				
THREE	9"	288'	422'				
Casing Record							
Surface String	Size	Wd/Ft	Top	Bottom			
18" PVC	16.75" ID		SURFACE	120'			
10" PVC	9.625" ID		SURFACE	288'			
Production String							
Liner							
Invoice No.	2004153	P.O. #.	Job No.:	* FIELD PRINT *			

All interpretations are opinions based on inferences from electrical or other measurements and we cannot and do not guarantee the accuracy or correctness of any interpretation, and we shall not, except in the case of gross or willful negligence on our part, be liable or responsible for any loss, costs, damages, or expenses incurred or sustained by anyone resulting from any interpretation made by any of our officers, agents or employees. These interpretations are also subject to our general terms and conditions set out in our current Price Schedule.

**Comments**

STATIC and DYNAMIC DOWN passes were performed.  
 Cw=2757 uS/cm @ 80.8 degF (Dynamic Sample). Q =~250 gpm.  
**FLUID RESISTIVITY CALIBRATION REPORT (Performed: 16-AUG-04 13:00)**  

OHM-M	CPS
820.1	4400.12
1525.1	3890.11
3315.0	3565.33

**TEMPERATURE CALIBRATION REPORT (Performed: 16-AUG-04 13:45)**  

DEG-F	CPS
34.6	2346.14
144.6	6955.44

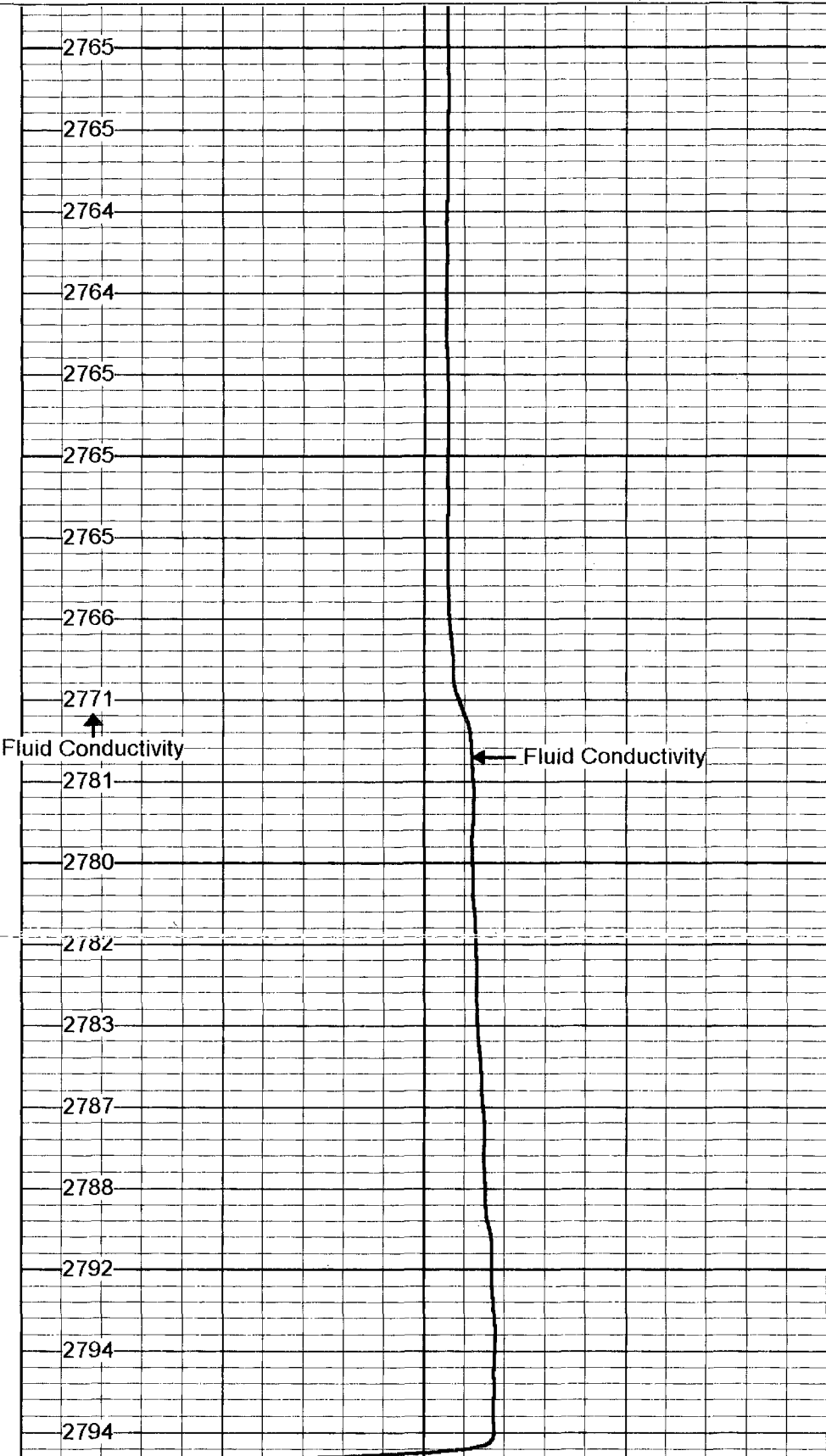
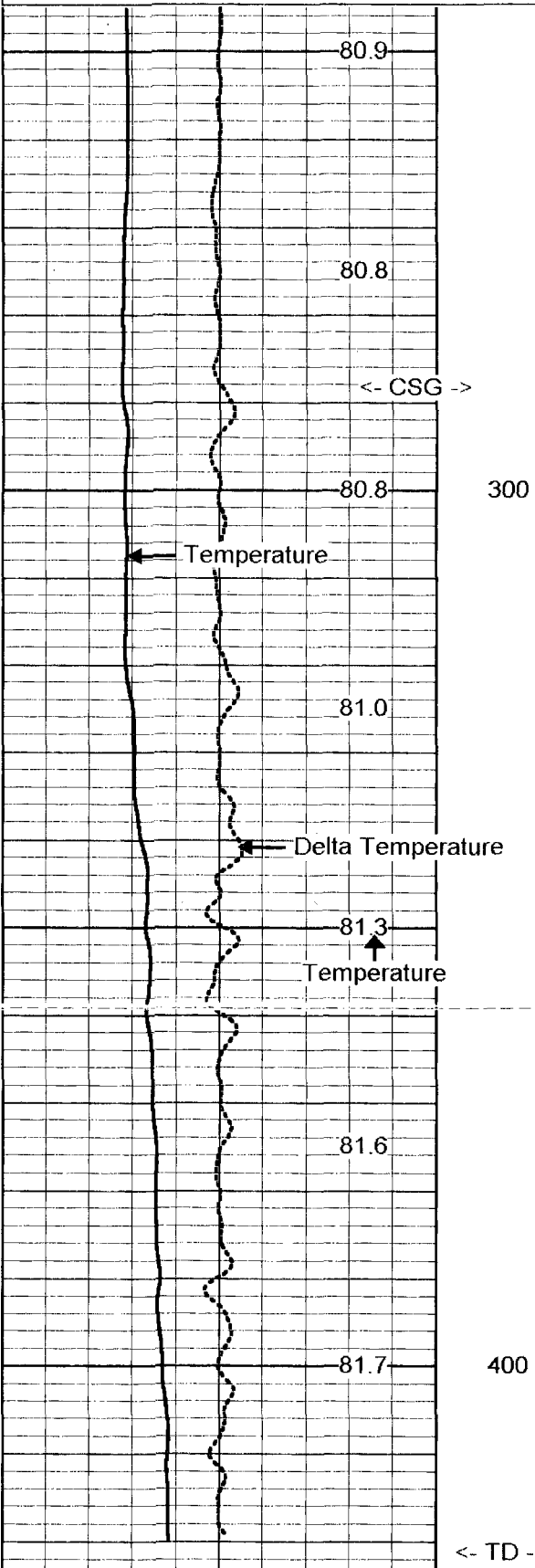


# Dynamic FCT Down

Database File: caricaew.db  
 Dataset Pathname: run3/DFCT  
 Presentation Format: fct5.prs  
 Dataset Creation: Fri Oct 29 14:21:36 2004  
 Charted by: Depth in Feet scaled 1:240

78 TEMP (degF) 88  
-0.5 DTMP (degF) 0.5

2500 Fluid Conductivity (degF) 3000



78 TEMP (degF) 88  
-0.5 DTMP (degF) 0.5

2500 Fluid Conductivity (degF) 3000

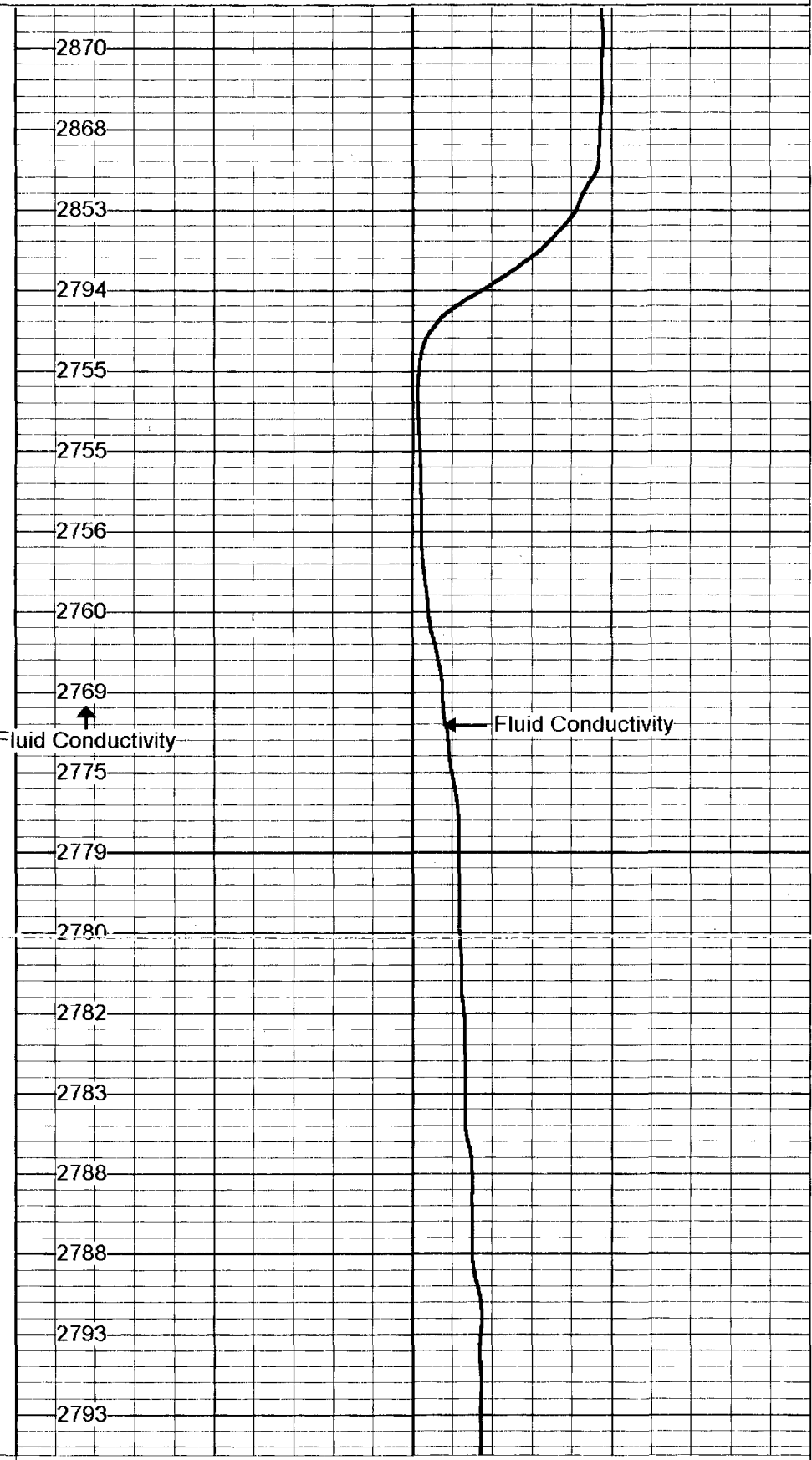
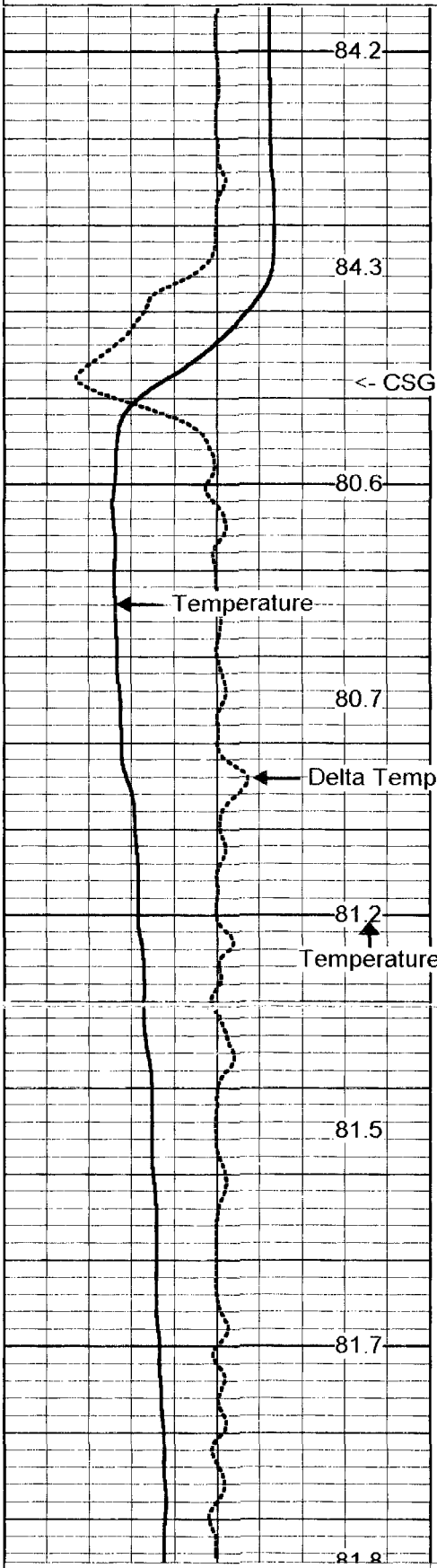


# Static FCT Down

Database File: caricaew.db  
Dataset Pathname: run3/SFCT  
Presentation Format: fct5.pr5  
Dataset Creation: Fri Oct 29 14:11:00 2004  
Charted by: Depth in Feet scaled 1:240

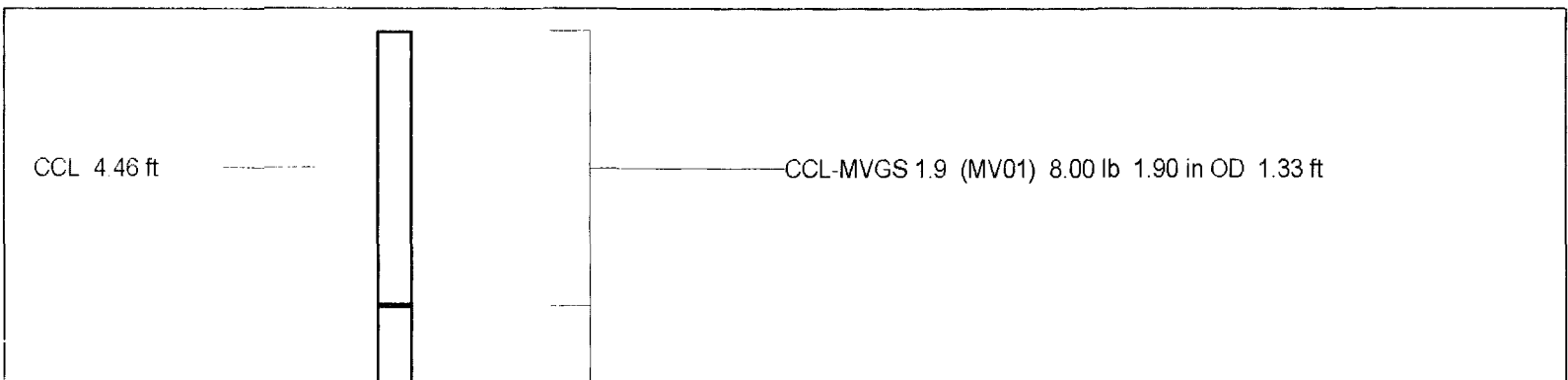
TEMP (degF) DTMP (degF)

Fluid Conductivity (degF)



TEMP (degF) DTMP (degF)

Fluid Conductivity (degF)



GR#2 1.15 ft

TEMP 0.10 ft



GR #2 -RTSB (MV01B) 10.00 lb 1.90 in OD 3.33 ft

TEMP-RTS (MV01) 2.00 lb 1.90 in OD 0.46 ft

Dataset: run3/pass24  
Total Length: 5.12 ft  
Total Weight: 20.00 lb  
O.D. 1.90 in

