



**FLUID CONDUCTIVITY
TEMPERATURE
LOG**

WRES# 980602

Company **Rowe Well Drilling Co**
Well **SZMW-1 (L1037)**
Field **Cape Coral**
County **Lee**
State/Prv **Florida**

Location
**Cape Coral ASR Project - CPS-4 Site
Cape Coral Water Utilities Department
MWH**

Other Services
**XY/GR/FCT
DIL,BHC
FLO,DHTV**

Company **Rowe Well Drilling Co.**
Well **SZMW-1 (L1037)**
Field **Cape Coral**
County **Lee**
State/Prv **Florida**

Permanent Datum **G.L.**
Log Measured From **G.L.**
Drilling Measured From **G.L.**

Elevation

Elevation
**KB
DF
GL**

APR 10 2009
SOUTH DISTRICT

Date	10-APR-2009						
Run Number	THREE						
Depth Driller	870'						
Depth Logger	870'						
Bottom Logged Interval	888'						
Top Log Interval	450'						
Open Hole Size	11 5"						
Type Fluid	H2O						
Density / Viscosity	NA/NA						
Max. Recorded Temp.	NA						
Estimated Cement Top	NA						
Time Well Ready	10:45 4/10/2009						
Time Logger on Bottom	13:45 4/10/2009						
Equipment Number	MVGGS-1						
Location	Ft. Myers						
Recorded By	S. Miller/C. Miller						
Witnessed By	B. Fat (MWH)						
Borehole Record							
Run Number	Bit	From	To	Size	Weight	From	To
ONE	12.25"	40'	510'				
TWO	17"	40'	503'				
THREE	11.5"	500'	870'				
Casing Record			Tubing Record				
Surface String	Size	Wd/Ft	Top	Bottom			
18"	0.375" WT		SURFACE	40'			
12"	0.375" WT		SURFACE	500'			
Production String							
Liner							
Invoice No.	2009047	P.O. #		Job No.		* FIELD PRINT *	

<<< Fold Here >>>

All interpretations are opinions based on inferences from electrical or other measurements and we cannot and do not guarantee the accuracy or correctness of any interpretation, and we shall not, except in the case of gross or willful negligence on our part, be liable or responsible for any loss, costs, damages, or expenses incurred or sustained by anyone resulting from any interpretation made by any of our officers, agents or employees. These interpretations are also subject to our general terms and conditions set out in our current Price Schedule.

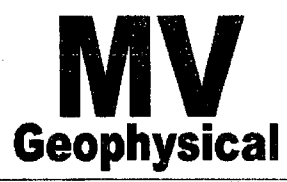
Comments

STATIC and DYNAMIC UP (due to borehole conditions) passes were performed.
Cw=2,391 uS/cm @ 83.1 degF (Dynamic Sample). Q = ? (no estimate).
FLUID RESISTIVITY CALIBRATION REPORT (Performed: 1-APR-09 14:45)

uS/cm	CPS
2023.6	2985.71
4402.1	2702.45
8828.1	2403.14

TEMPERATURE CALIBRATION REPORT (Performed: 1-APR-09 14:30)

DEG-F	CPS
37.8	142.15
143.7	2685.4

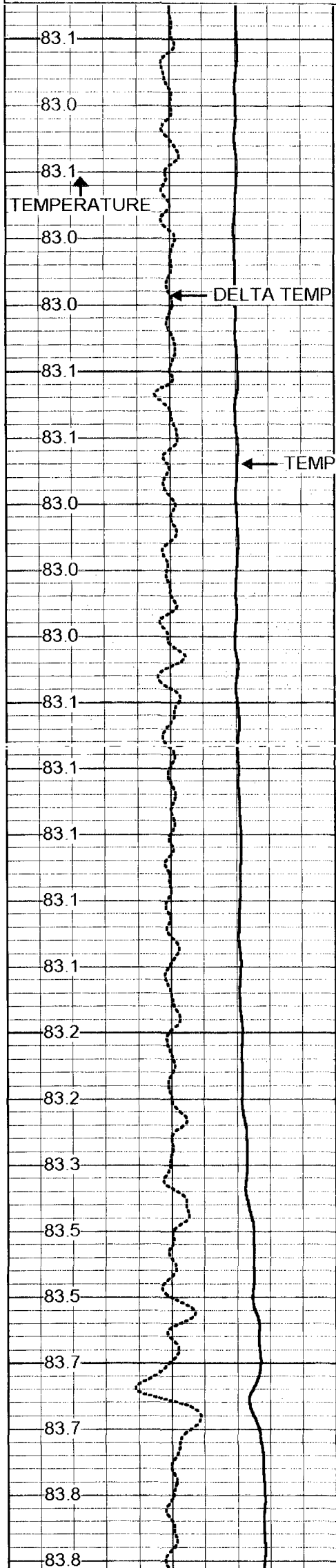


Dynamic FCT Down

Database File: rdcl1037.db
Dataset Pathname: run3/DFCT
Presentation Format: fct1037.prs
Dataset Creation: Fri Apr 10 14:49:41 2009
Charted by: Depth in Feet scaled 1:240

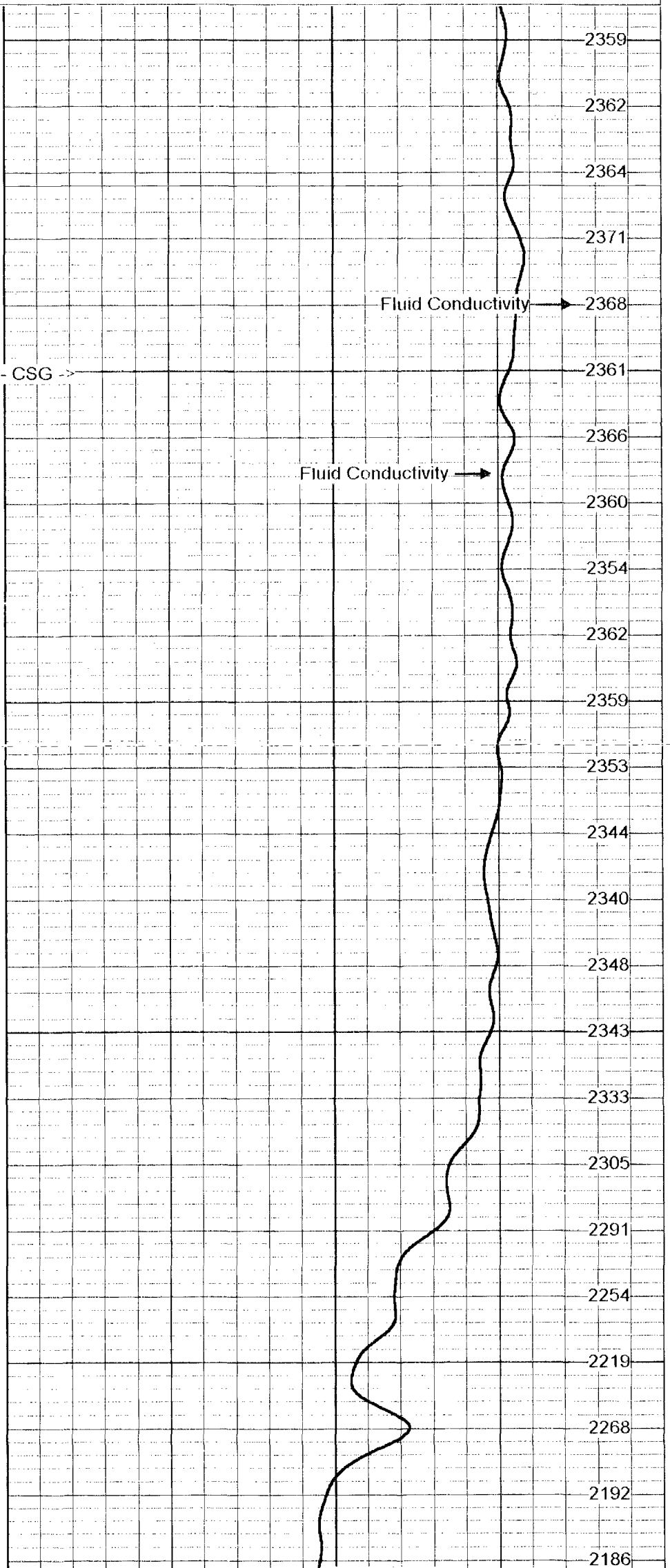
76 TEMP (degF) 86
-0.5 DTMP (degF) 0.5

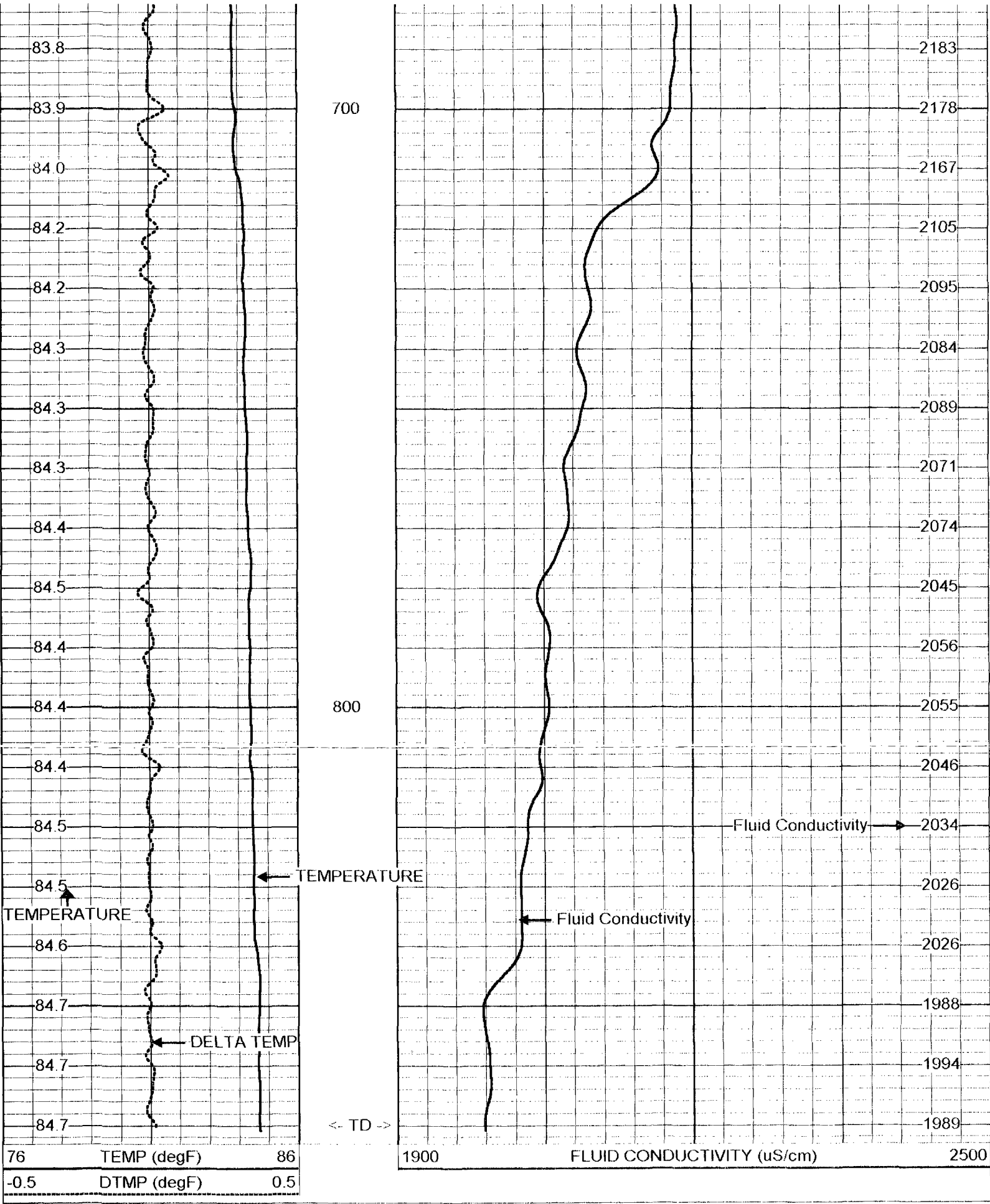
1900 FLUID CONDUCTIVITY (uS/cm) 2500



500 <- CSG ->

600



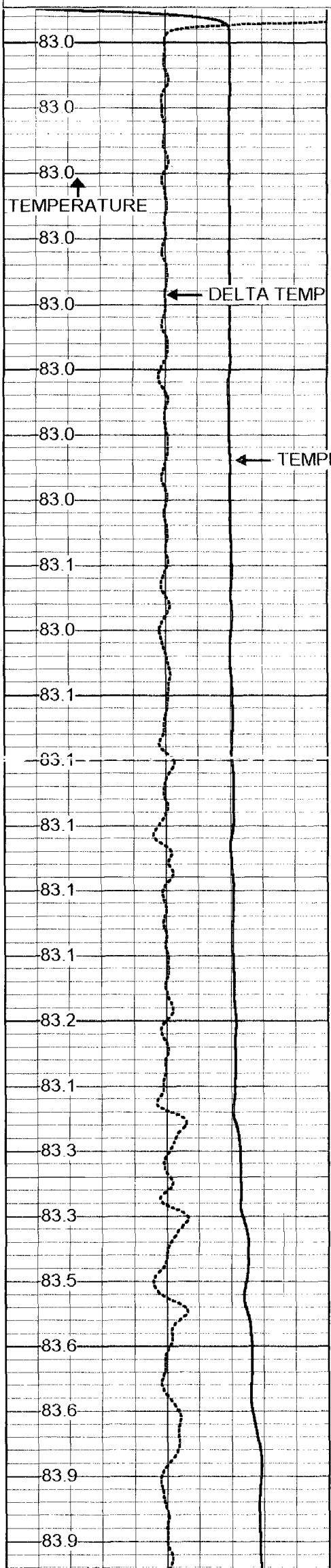


Static FCT Down

Database File: rdcl1037.db
 Dataset Pathname: run3/SFCT
 Presentation Format: fctl1037.prs
 Dataset Creation: Fri Apr 10 16:33:51 2009
 Charted by: Depth in Feet scaled 1:240

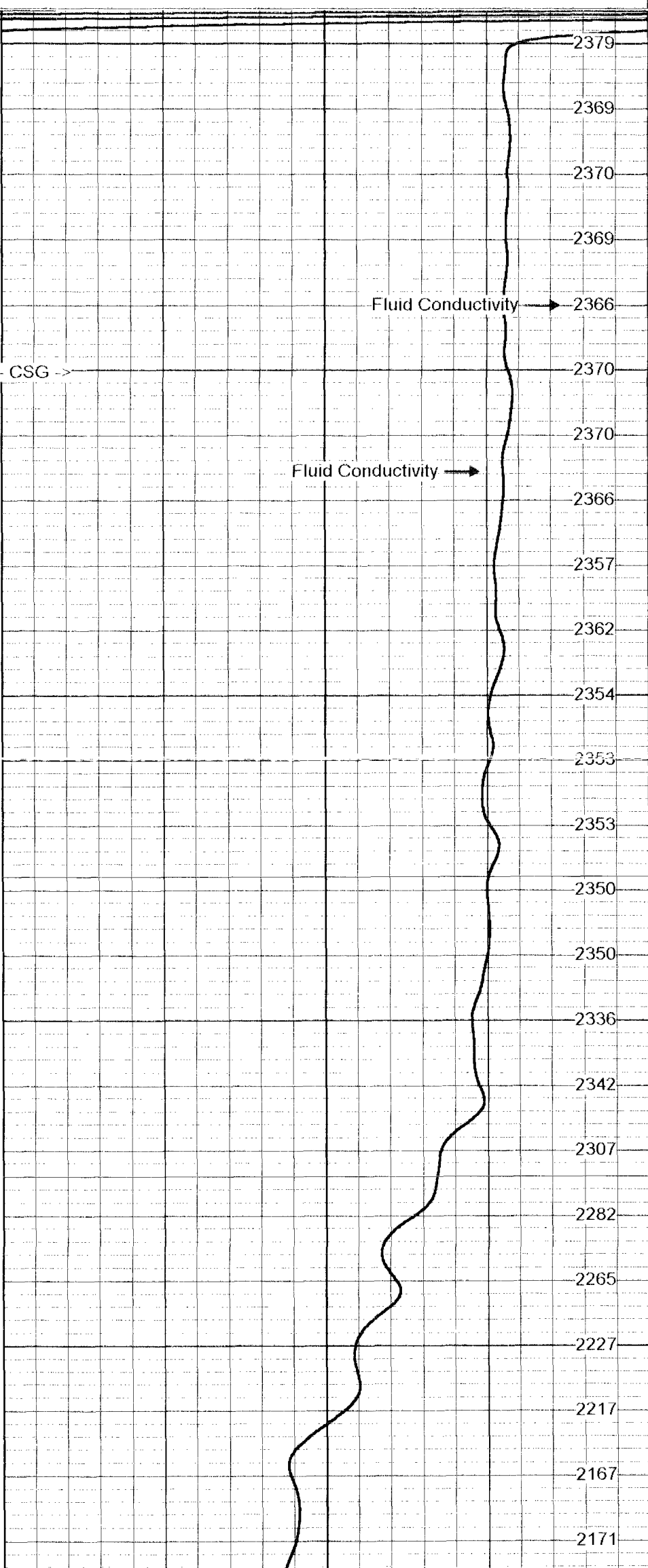
76 TEMP (degF) 86
-0.5 DTMP (degF) 0.5

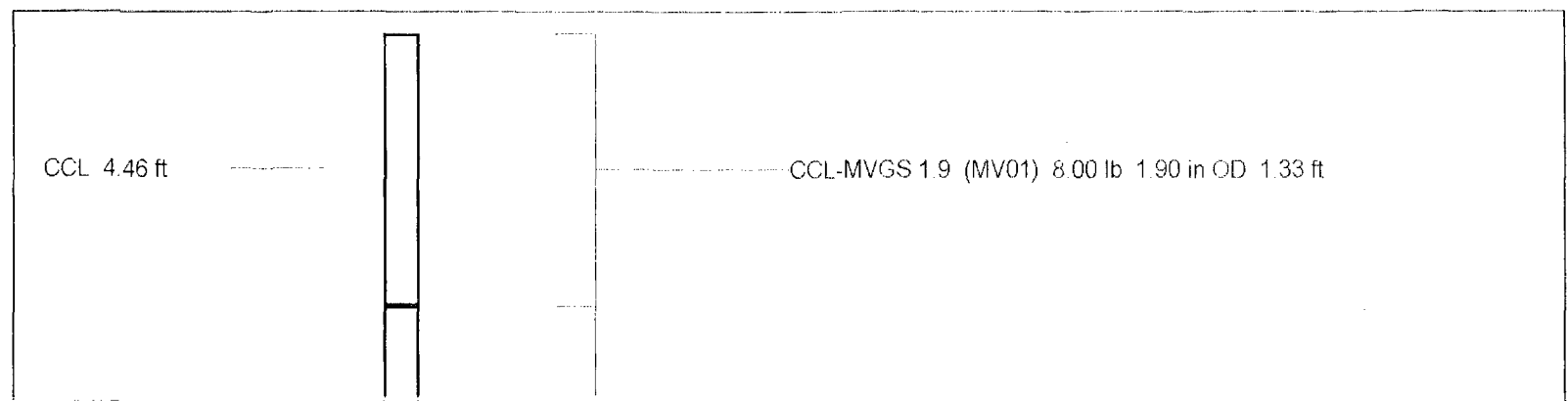
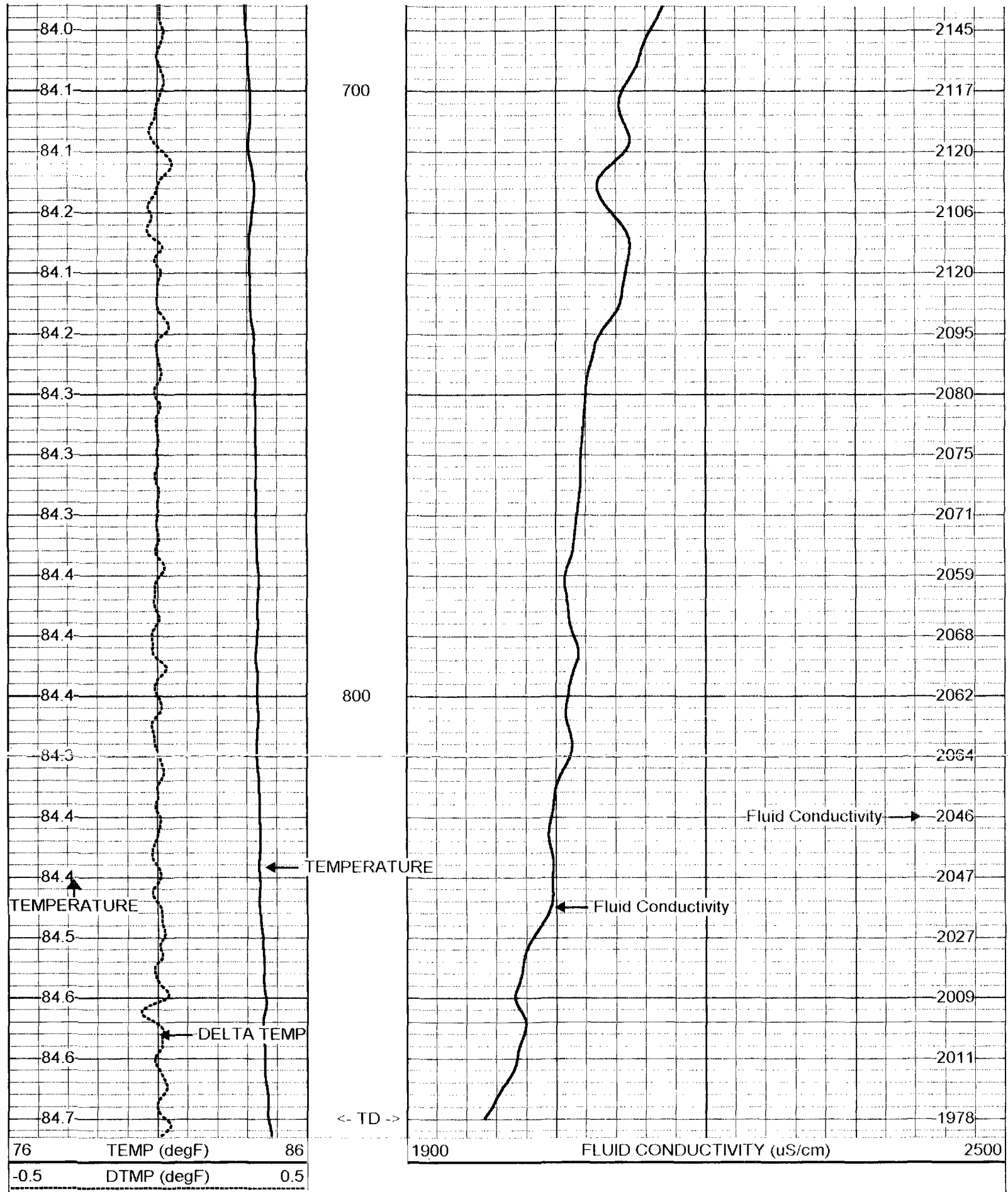
1900 FLUID CONDUCTIVITY (uS/cm) 2500

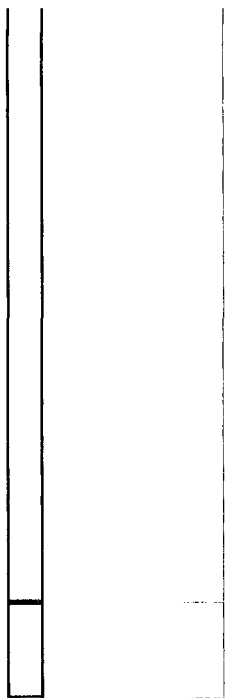


500 <- CSG ->

600







GR#2 1.15 ft

TEMP 0.10 ft

GR #2 -RTSB (MV01B) 10.00 lb 1.90 in OD 3.33 ft

TEMP-RTS (MV01) 2.00 lb 1.90 in OD 0.46 ft

Dataset:	run3/pass23
Total Length:	5.12 ft
Total Weight:	20.00 lb
O.D.	1.90 in