



**FLUID CONDUCTIVITY
TEMPERATURE
LOG**

WACS 98662

Company Diversified Drilling Corp.
Well NSTS ASR TPW L1028
Field Cape Coral
County Lee
State/Prv Florida

Company Diversified Drilling Corporation
Well NSTS ASR TPW L1028
Field Cape Coral
County Lee
State/Prv Florida

Location
 Cape Coral ASR Project - NSTS Site
 Cape Coral Water Utilities Department
 MWH

Permanent Datum	G.L.	Elevation	Other Services
Log Measured From	G.L.		XY/GR/DIL
Drilling Measured From	G.L.		BHC,FLOW
			FCT,DHTV

Date	1-OCT-2007	
Run Number	THREE	
Depth Driller	1200'	
Depth Logger	1199'	
Bottom Logged Interval	1191'	
Top Log Interval	475'	
Open Hole Size	9.875"	
Type Fluid	H2O	
Density / Viscosity	NANA	
Max. Recorded Temp.	see FCT log	
Estimated Cement Top	NA	
Time Well Ready	09:00 10/1/2007	
Time Logger on Bottom	13:00 10/1/2007	
Equipment Number	MVG-S-1	
Location	Ft. Myers	
Recorded By	S.Miller/C.Miller	
Witnessed By	G.Young (MWH)	T.Thomas (MWH)
		Rosco (DDC)

Borehole Record			Tubing Record				
Run Number	Bit	From	To	Size	Weight	From	To
ONE	12.25"	40'	529'				
TWO	32"	40'	494'				
THREE	9.875"	490'	1200'				

Casing Record	Size	Wgt/Ft	Top	Bottom
Surface String	34"	.375" WT	SURFACE	40'
Prod. String	28"	.375" WT	SURFACE	490'
Production String				489' Logger
Liner				CC-L1028

Invoice No. 2007246 P.O.# Job No. * FINAL PRINT *

<<< Fold Here >>>

All interpretations are opinions based on inferences from electrical or other measurements and we cannot and do not guarantee the accuracy or correctness of any interpretation, and we shall not, except in the case of gross or willful negligence on our part, be liable or responsible for any loss, costs, damages, or expenses incurred or sustained by anyone resulting from any interpretation made by any of our officers, agents or employees. These interpretations are also subject to our general terms and conditions set out in our current Price Schedule.

Comments

STATIC and DYNAMIC DOWN passes were performed.
 Cw=3162 uS/cm @ 85.3 degF (Dynamic Sample). Q =~1300 gpm.
FLUID RESISTIVITY CALIBRATION REPORT (Performed: 24-SEP-07 14:45)

uS/cm	CPS
2014.7	2994.69
4425.8	2715.25
8892.1	2435.37

TEMPERATURE CALIBRATION REPORT (Performed: 24-SEP-07 15:45)

DEG-F	CPS
38.6	147.852
148.1	2690.22

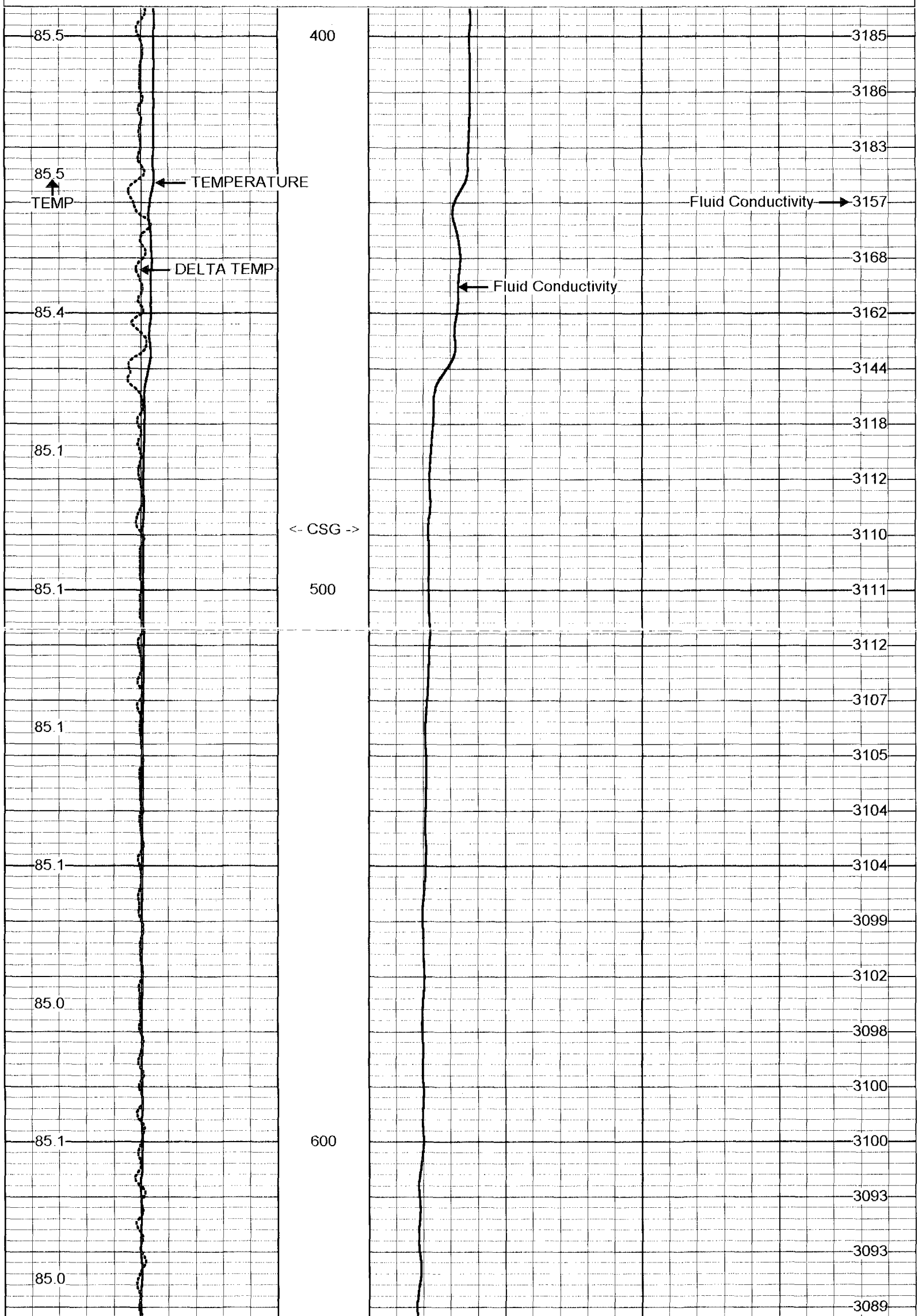


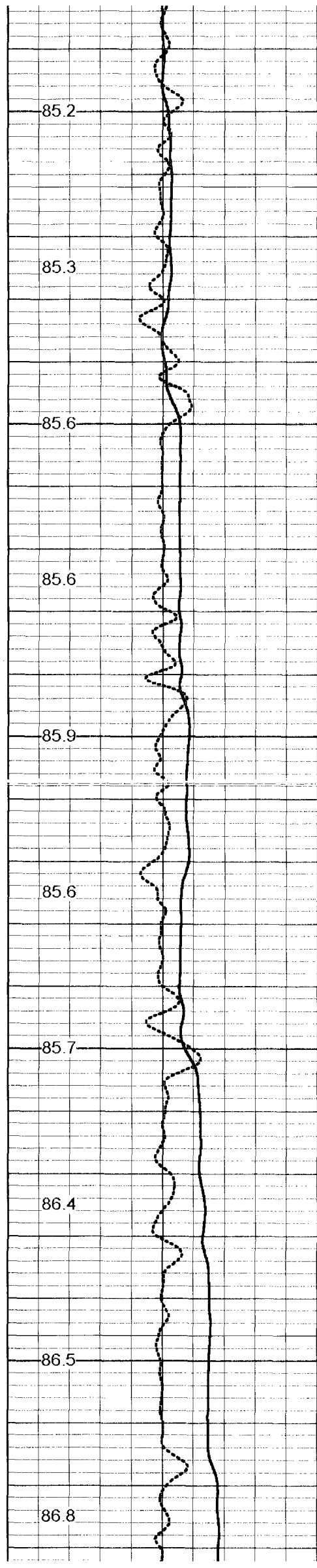
DYNAMIC FCT DOWN

Database File: cc-11028.db
 Dataset Pathname: run3/DFCT
 Presentation Format: fct11028.prs
 Dataset Creation: Mon Oct 01 14:17:05 2007
 Charted by: Depth in Feet scaled 1:240

80 TEMP (degF) 90
-0.5 DTMP (degF) 0.5

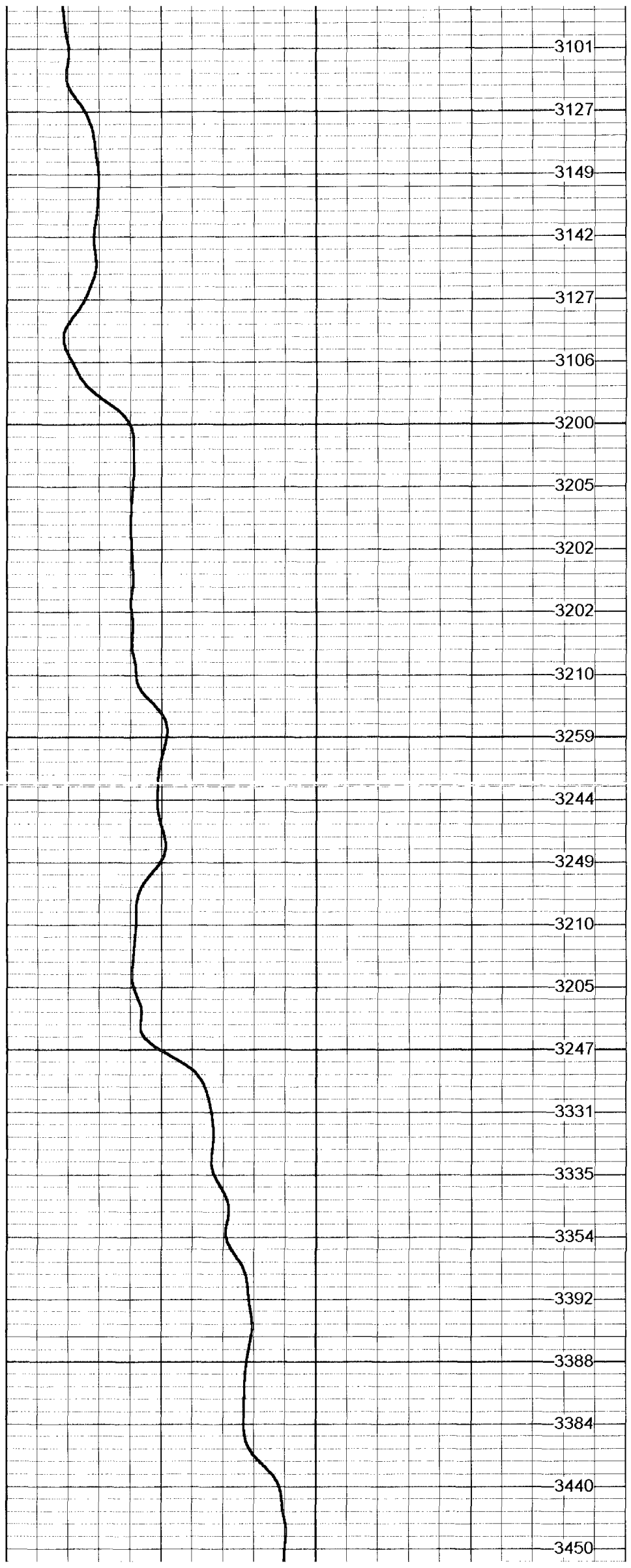
3000 FLUID CONDUCTIVITY (uS/cm) 4000



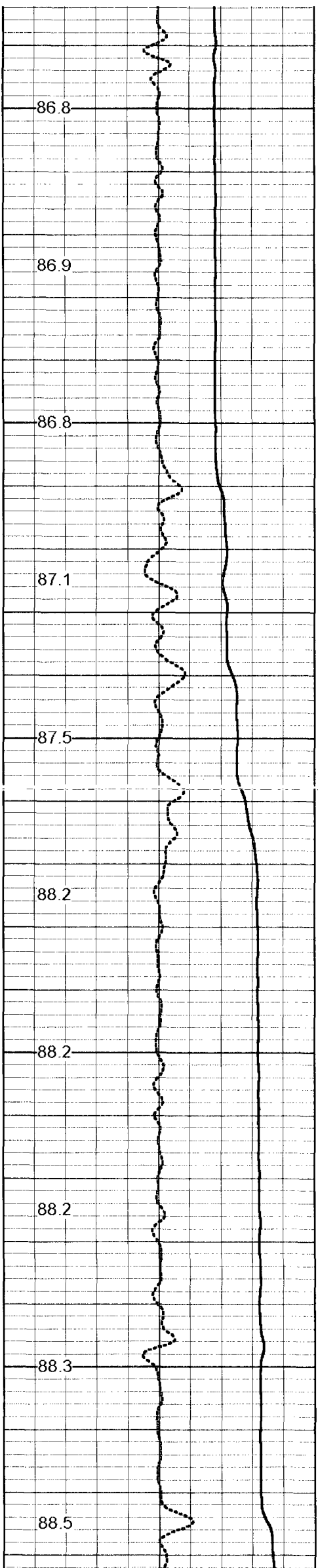


700

800



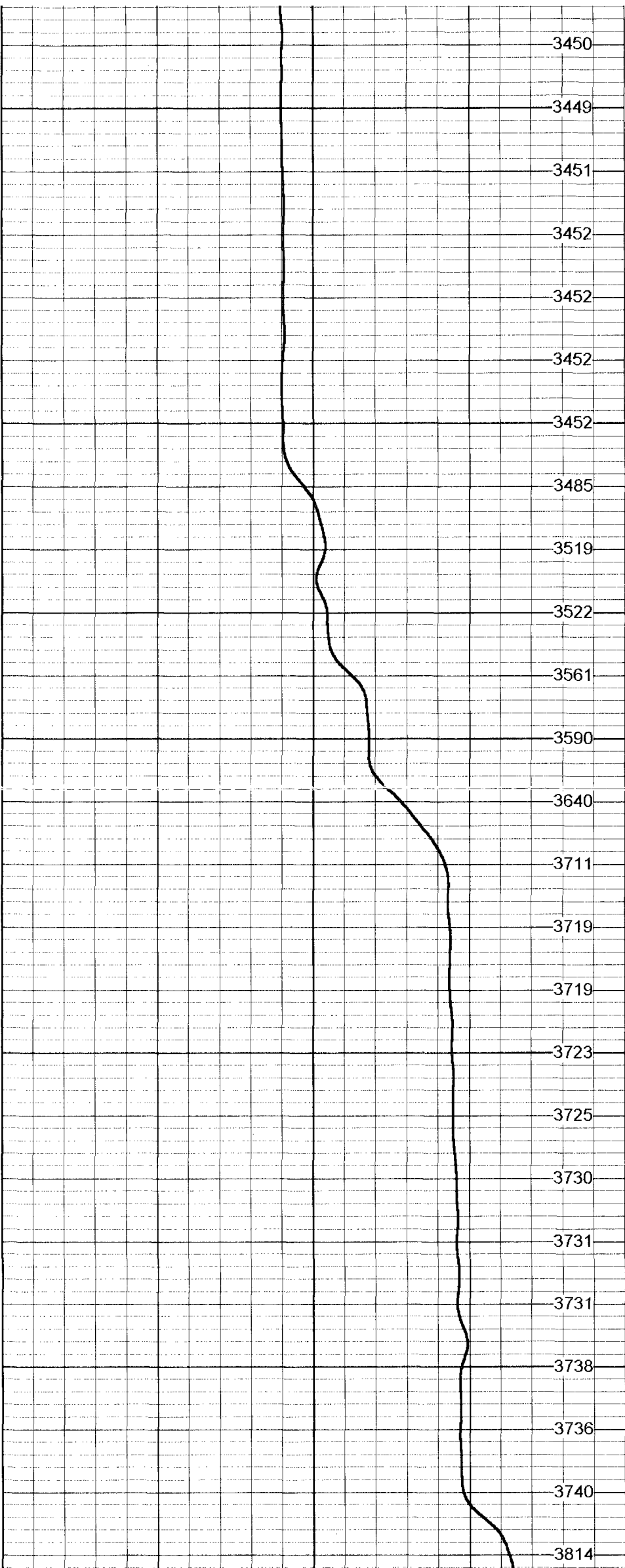
3101
3127
3149
3142
3127
3106
3200
3205
3202
3202
3210
3259
3244
3249
3210
3205
3247
3331
3335
3354
3392
3388
3384
3440
3450

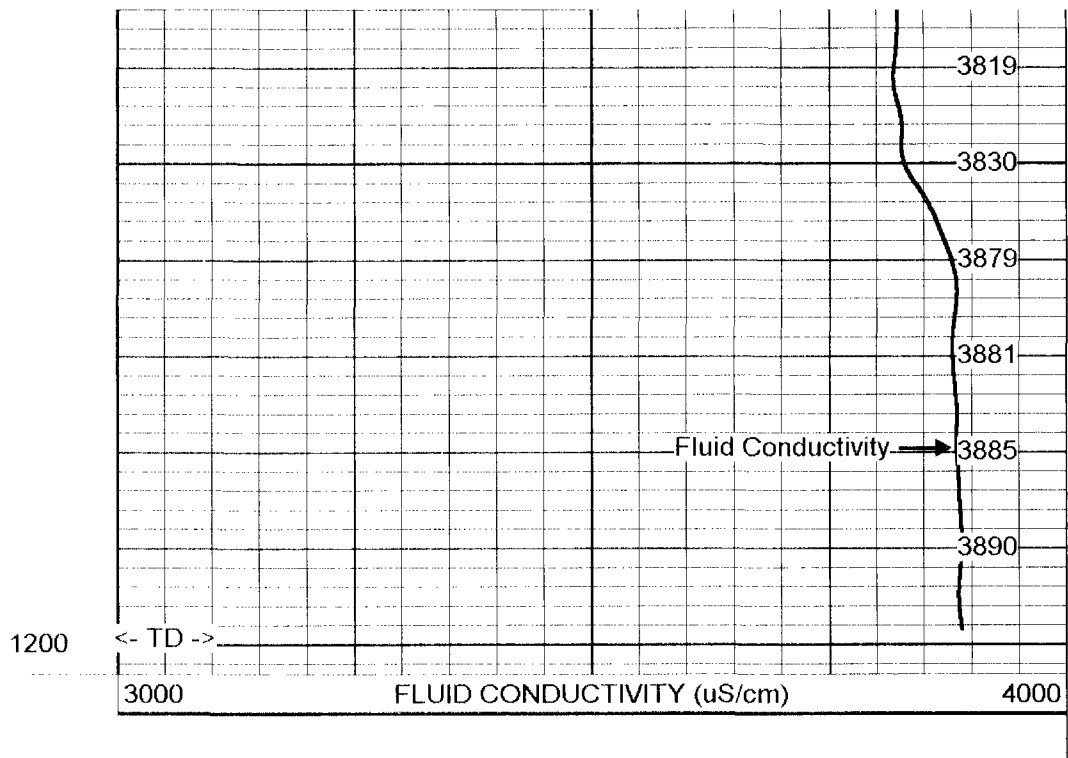
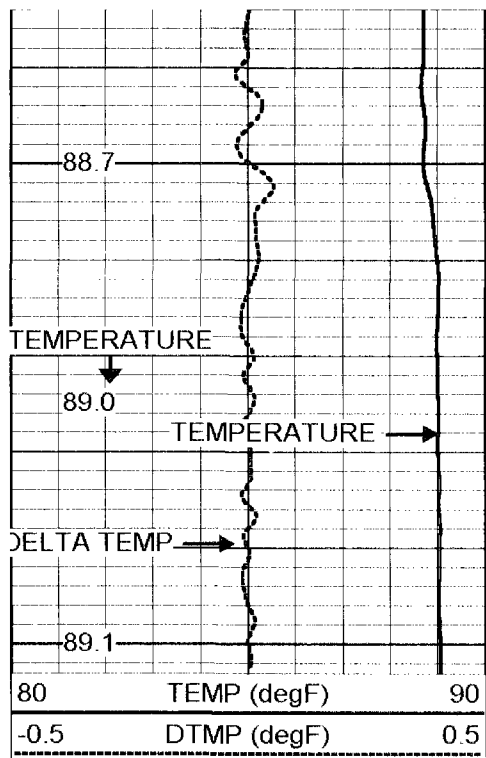


900

1000

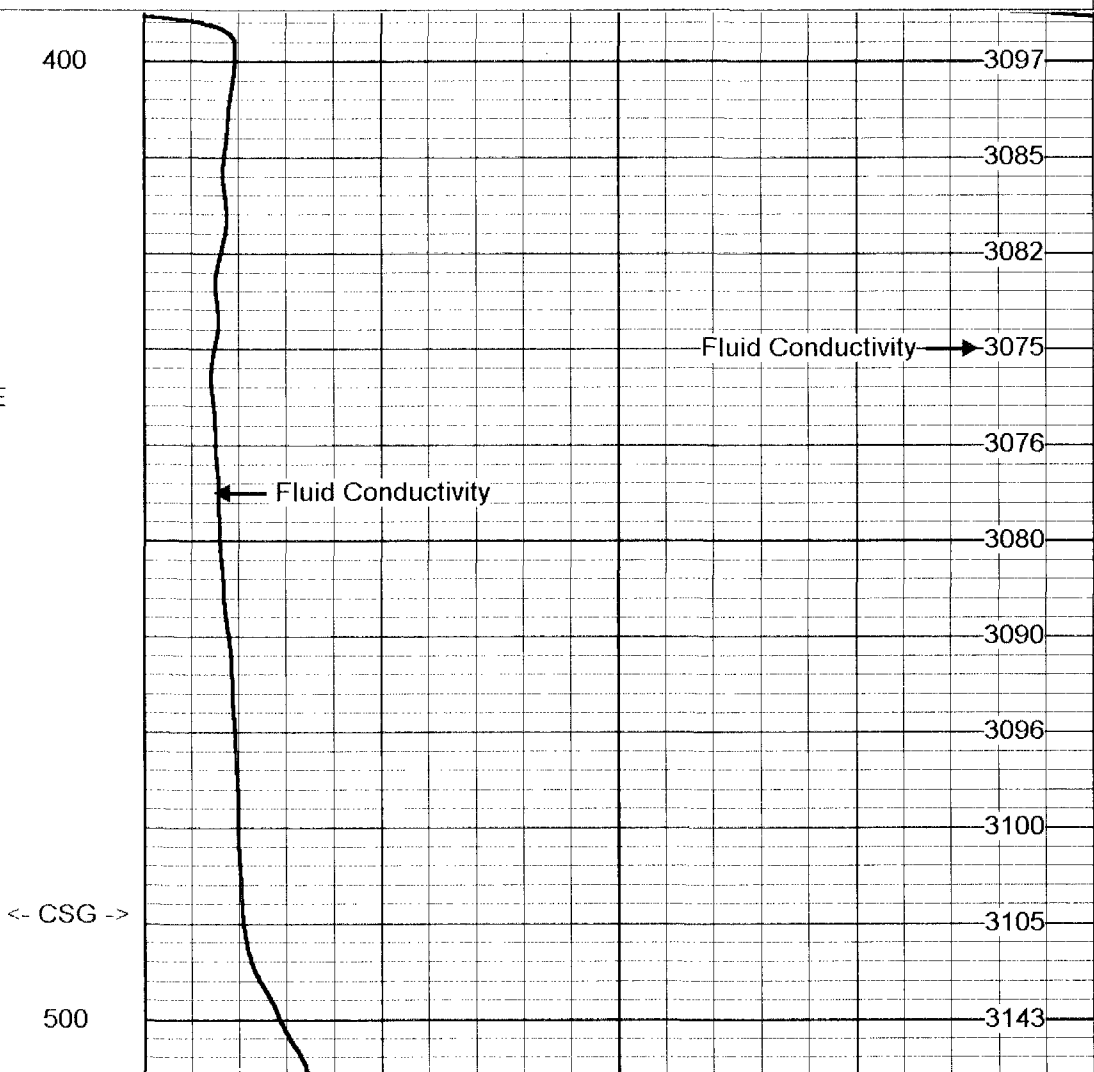
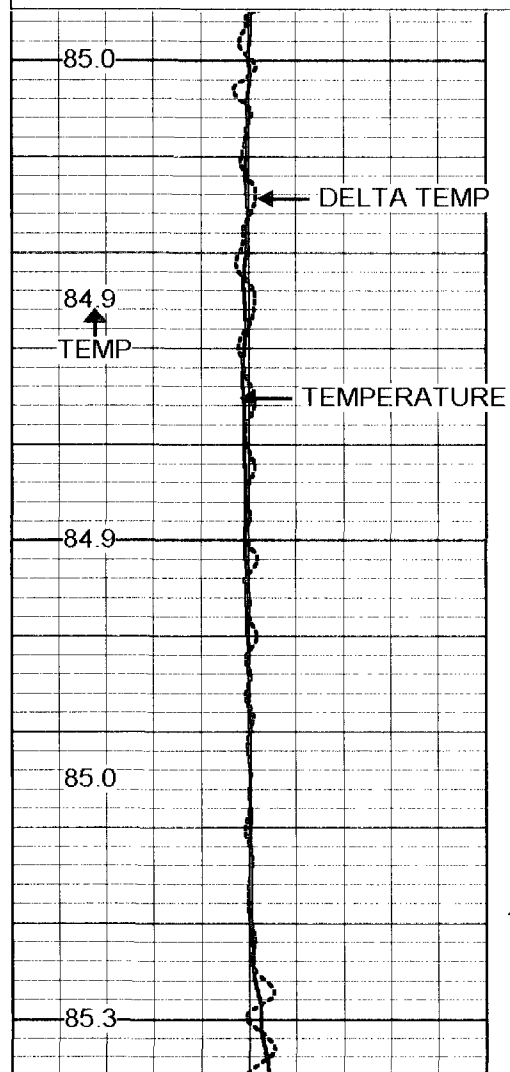
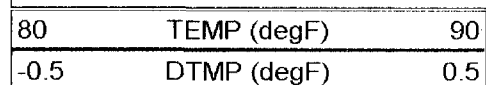
1100

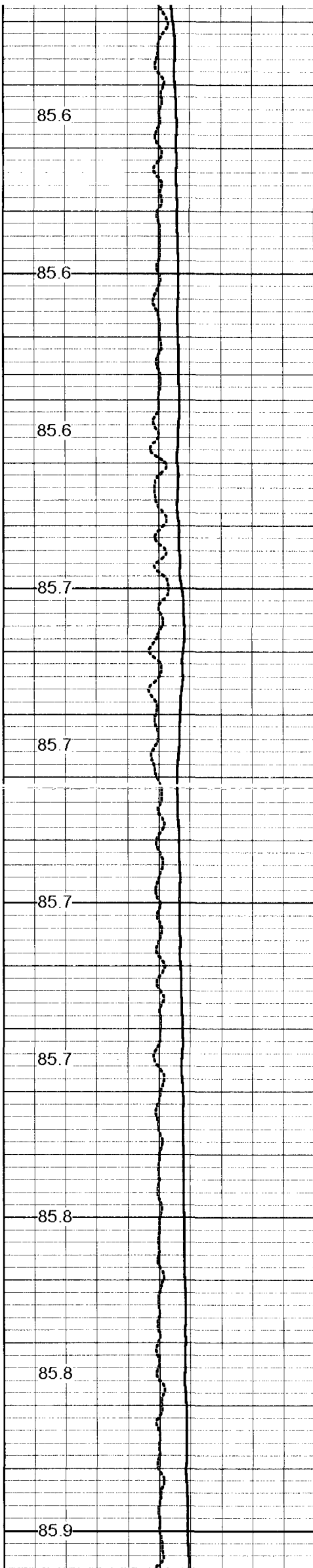




STATIC FCT DOWN

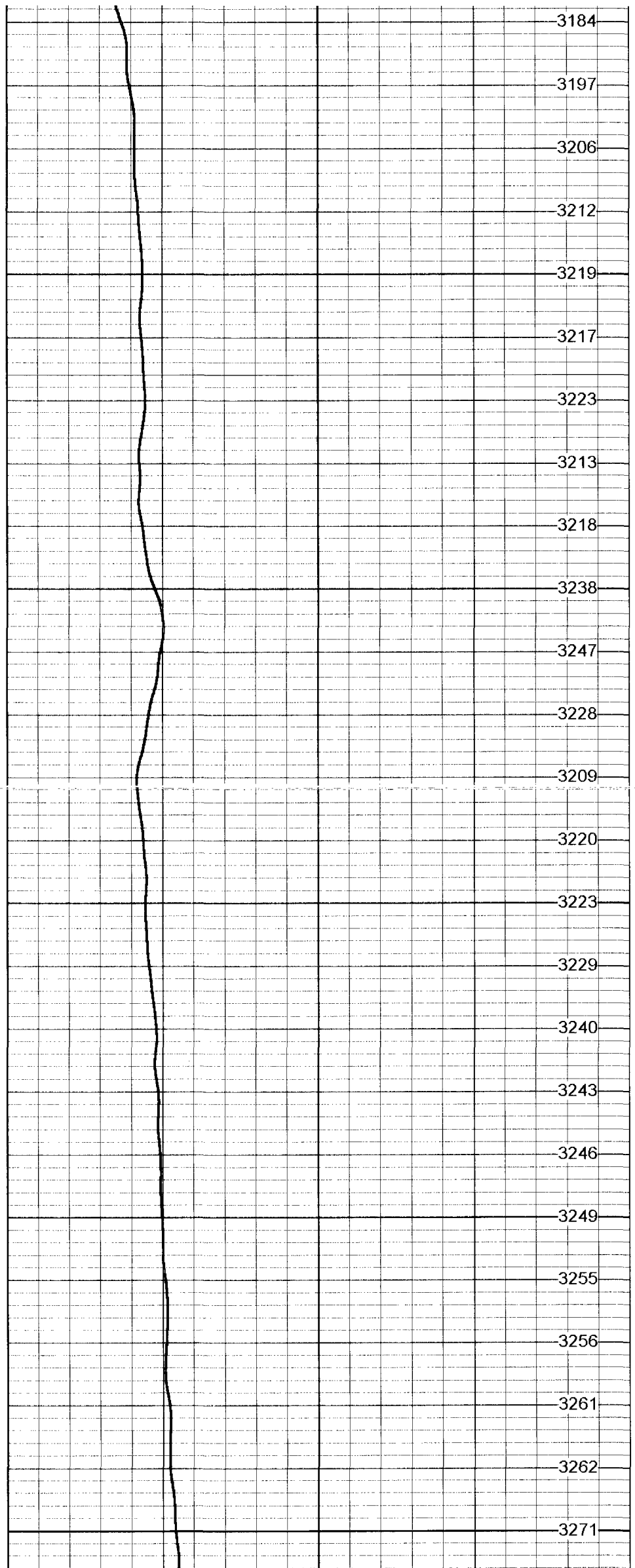
Database File: cc-11028.db
 Dataset Pathname: run3/SFCT
 Presentation Format: fct11028.prs
 Dataset Creation: Mon Oct 01 14:31:22 2007
 Charted by: Depth in Feet scaled 1:240

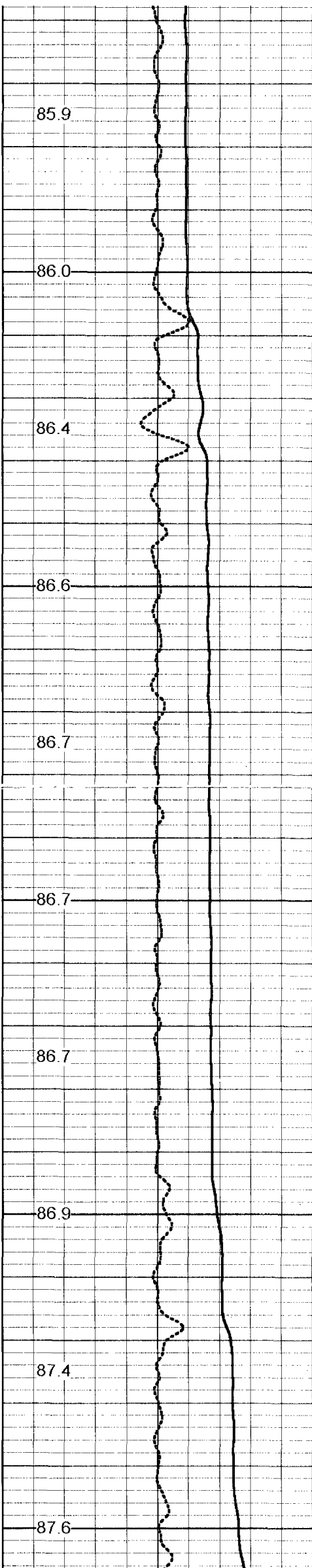




600

700

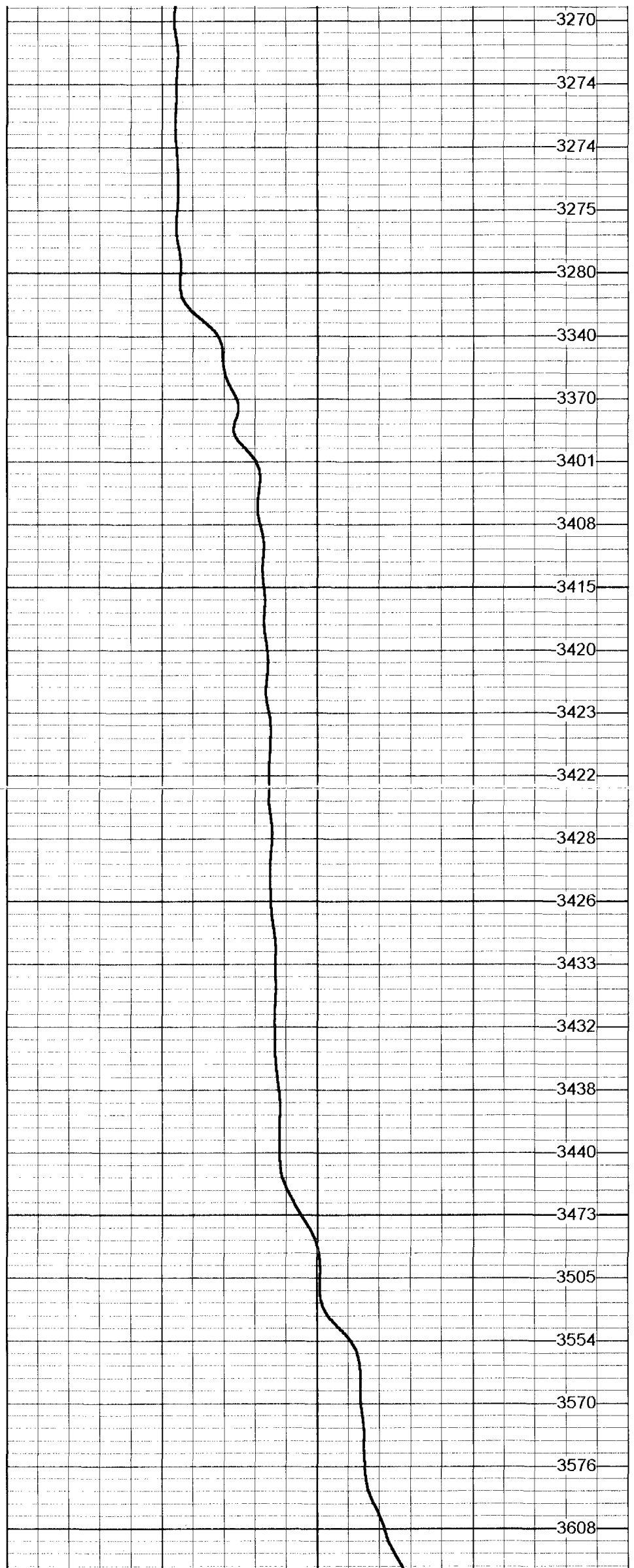




800

900

1000



3270

3274

3274

3275

3280

3340

3370

3401

3408

3415

3420

3423

3422

3428

3426

3433

3432

3438

3440

3473

3505

3554

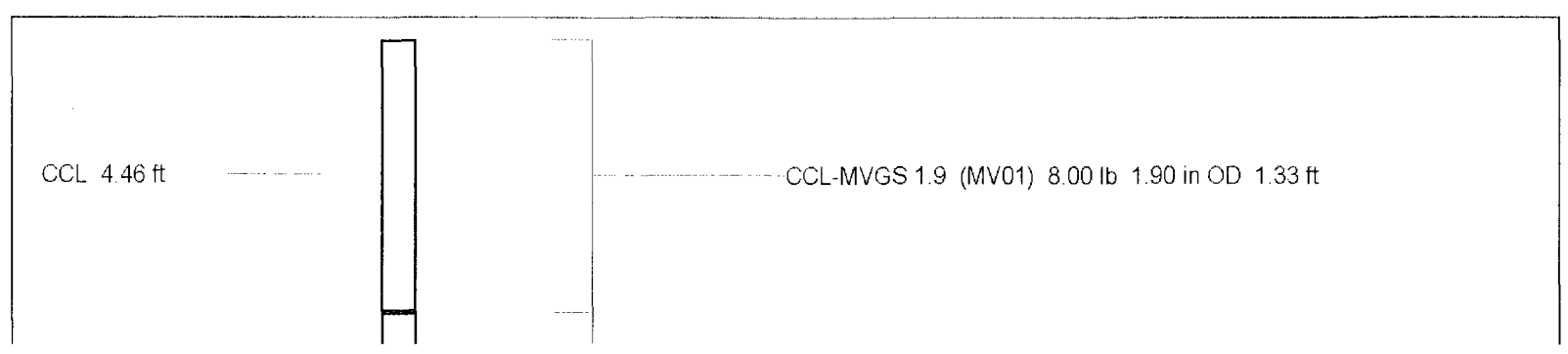
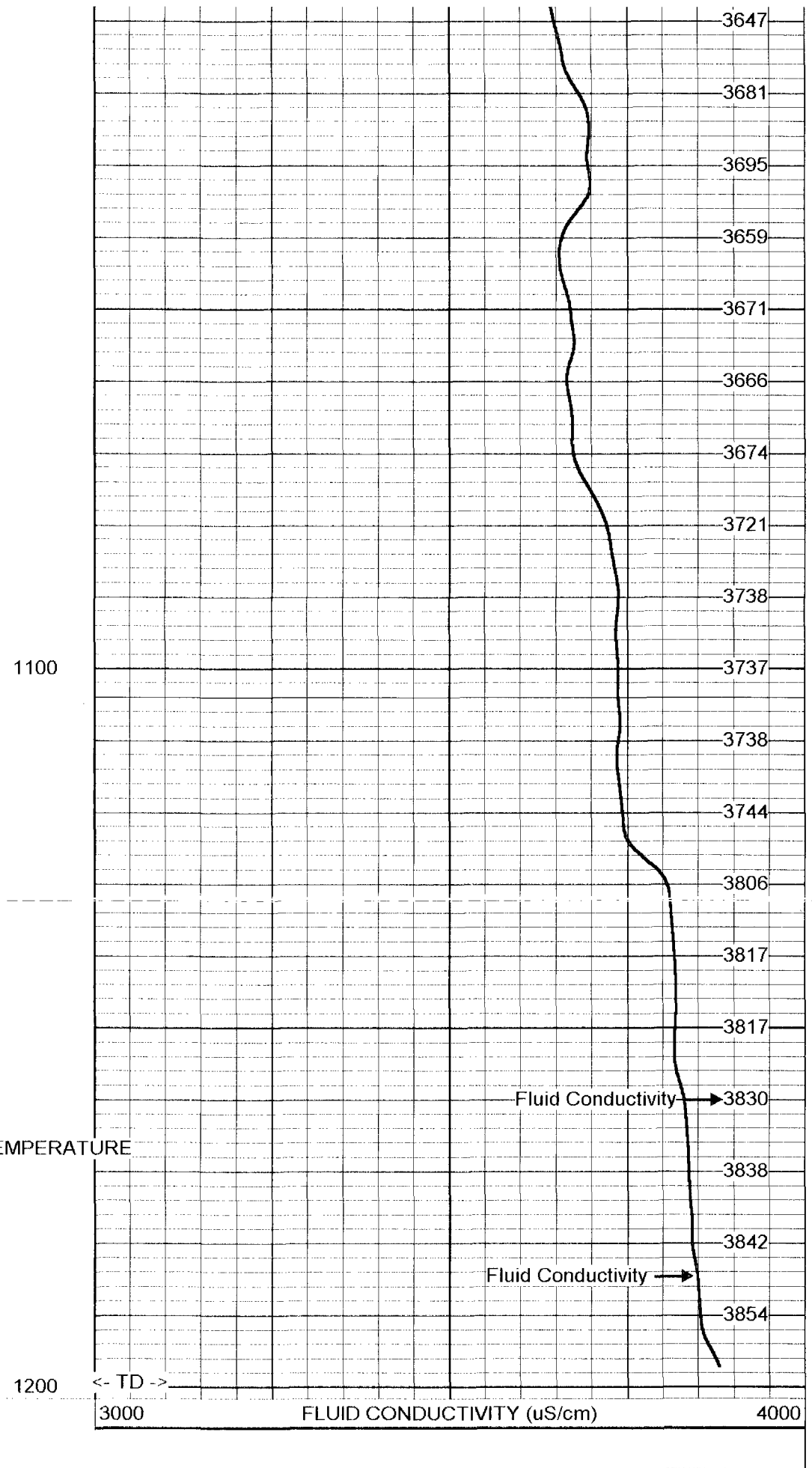
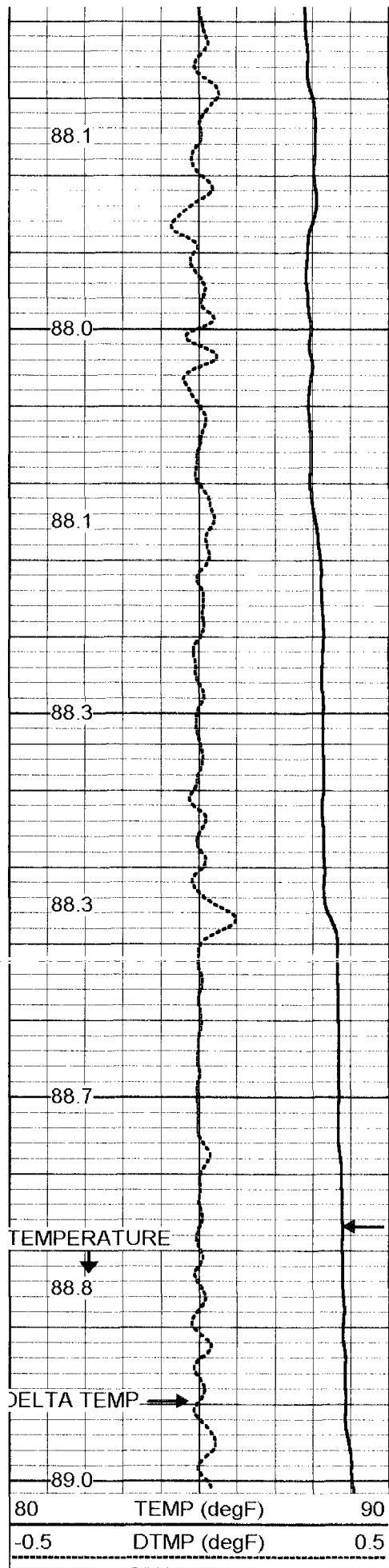
3570

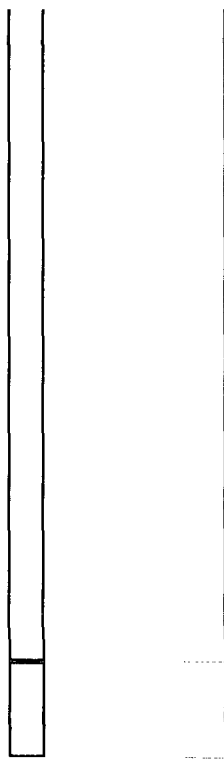
3576

3608

800

900





GR #2 -RTSB (MV01B) 10.00 lb 1.90 in OD 3.33 ft

GR#2 1.15 ft

TEMP 0.10 ft

TEMP-RTS (MV01) 2.00 lb 1.90 in OD 0.46 ft

Dataset: run3/pass12
Total Length: 5.12 ft
Total Weight: 20.00 lb
O.D. 1.90 in

