



FLUID CONDUCTIVITY  
TEMPERATURE  
LOG

Company Rowe Well Drilling Co.  
Well CPS ASR-4 (L1036)  
Field Cape Coral  
County Lee  
State/Pv Florida

Location Cape Coral ASR Project - CPS-4 Site  
Cape Coral Water Utilities Department  
MWH  
Elevation  
Other Services  
XY/GR, DIL  
FCT, BHC  
FLOW, DHTV

Company Rowe Well Drilling Co.  
Well CPS ASR-4 (L1036)  
Field Cape Coral  
County Lee  
State/Pv Florida  
Permanent Datum G.L.  
Log Measured From G.L.  
Drilling Measured From G.L.  
Elevation K.B., D.F., G.L.

Date	15-APR-2008
Run Number	THREE
Depth Driller	1200'
Depth Logger	1199'
Bottom Logged Interval	1199'
Top Log Interval	425'
Open Hole Size	9.875" H2O
Type Fluid	H2O
Density / Viscosity	NA/NA
Max. Recorded Temp	see FCT log
Estimated Cement Top	NA
Time Well Ready	08:00 4/15/2008
Time Logger on Bottom	11:30 4/15/2008
Equipment Number	MVGS-1
Location	Fr. Myers
Recorded By	S. Miller/C. Miller
Witnessed By	B. Fat (MWH)
Run Number	ONE
Bit	12.25"
From	32'
To	504'
Size	504'
Weight	502'
From	32'
To	504'
Run Number	TWO
Bit	32"
From	502'
To	500'
Size	500'
Weight	500'
From	500'
To	500'
Run Number	THREE
Bit	9.875"
From	500'
To	1200'
Size	1199' Logger
Weight	1199' Logger
From	1199' Logger
To	1199' Logger
Casing Record	Size Wd/Ft Top Bottom
Surface String	34" 0.375" WT SURFACE 35'
Prot. String	28" 0.375" WT SURFACE 500'
Production String	493' Logger
Liner	

Invoice No 2008089 P.O. # Job No. FIELD PRINT

>>> Fold Here >>>

All interpretations are opinions based on inferences from electrical or other measurements and we cannot and do not guarantee the accuracy or correctness of any interpretation, and we shall not, except in the case of gross or willful negligence on our part, be liable or responsible for any loss, costs, damages, or expenses incurred or sustained by anyone resulting from any interpretation made by any of our officers, agents or employees. These interpretations are also subject to our general terms and conditions set out in our current Price Schedule.

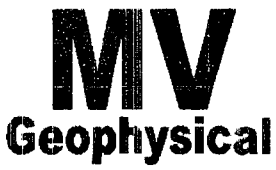
Comments

STATIC and DYNAMIC DOWN passes were performed.  
 Cw=2608 uS/cm @ 81.7 degF (Dynamic Sample). Q =~300 gpm.  
 FLUID RESISTIVITY CALIBRATION REPORT (Performed: 12-APR-08 14:45)

uS/cm	CPS
2023.6	2985.71
4402.1	2702.45
8828.1	2403.14

TEMPERATURE CALIBRATION REPORT (Performed: 12-APR-08 14:30)

DEG-F	CPS
37.8	142.15
143.7	2685.4

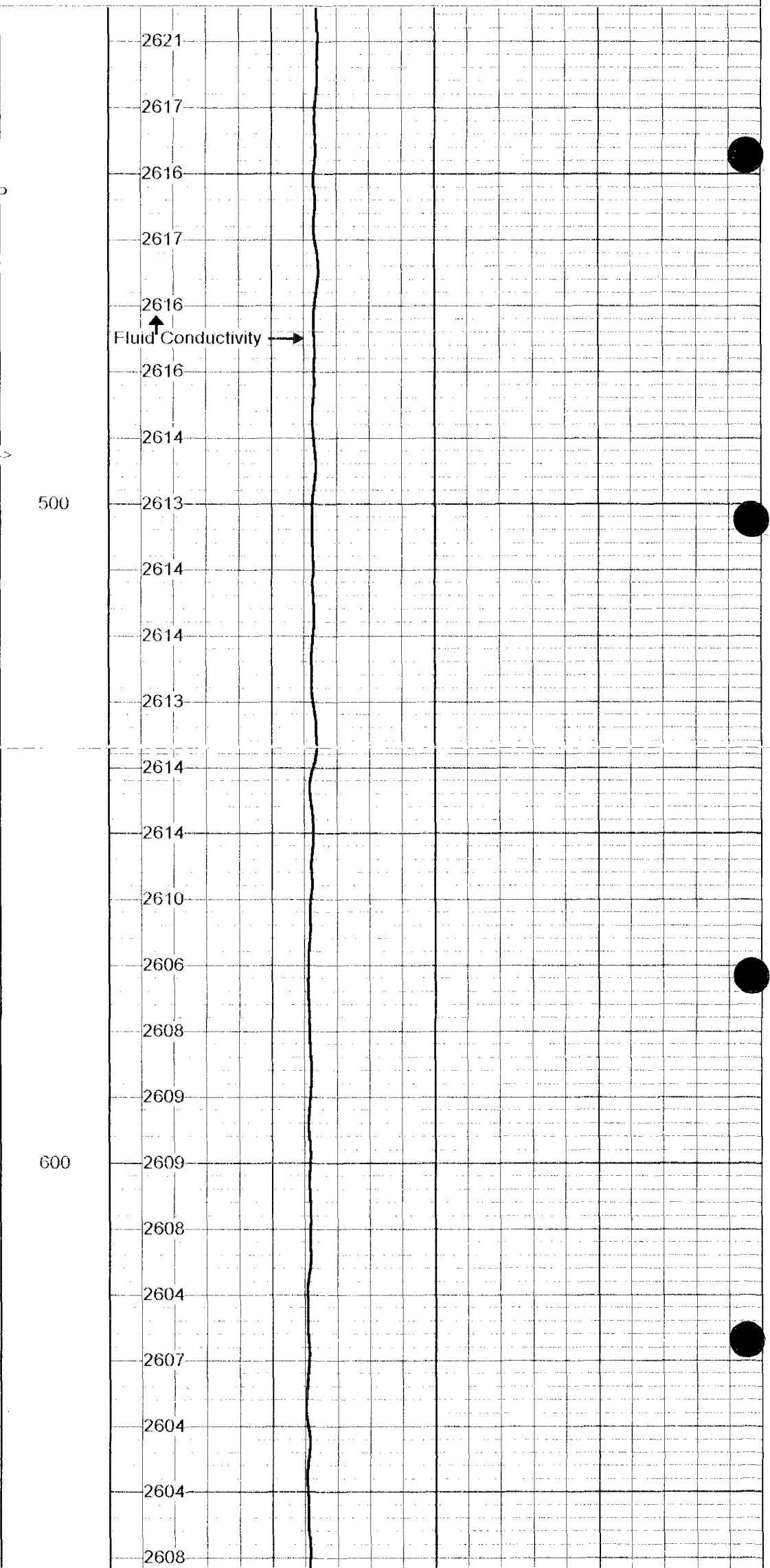
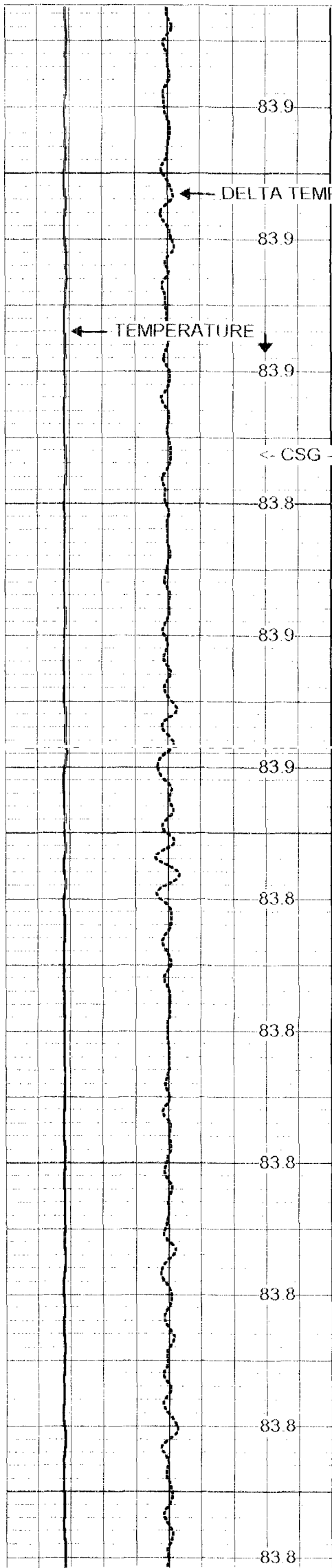


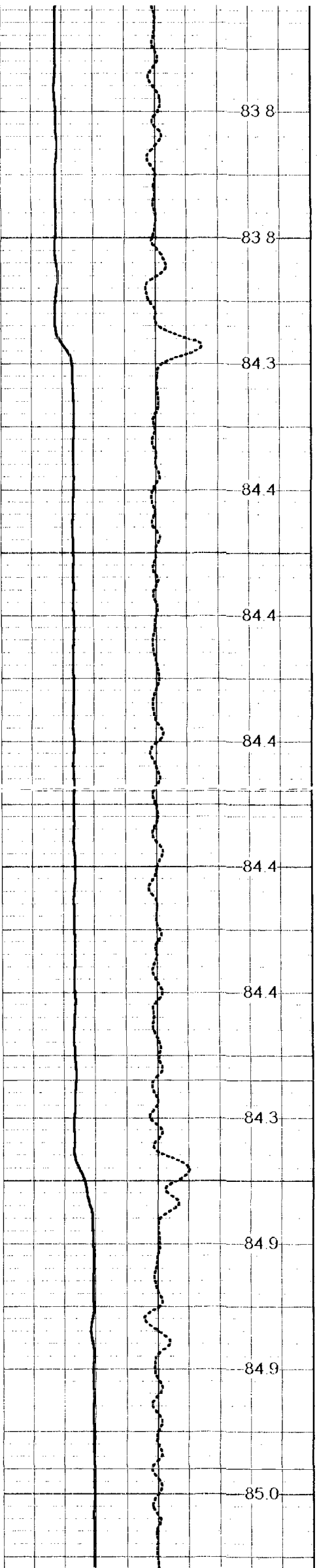
Dynamic FCT Down

Database File: rdc-cps4.db  
Dataset Pathname: run3/DFCT  
Presentation Format: fct11036.prs  
Dataset Creation: Tue Apr 15 12:27:31 2008  
Checked by: Depth in Feet read: 1240

82 TEMP (degF) 92  
-0.5 DTMP (degF) 0.5

2300 FLUID CONDUCTIVITY (uS/cm) 3300

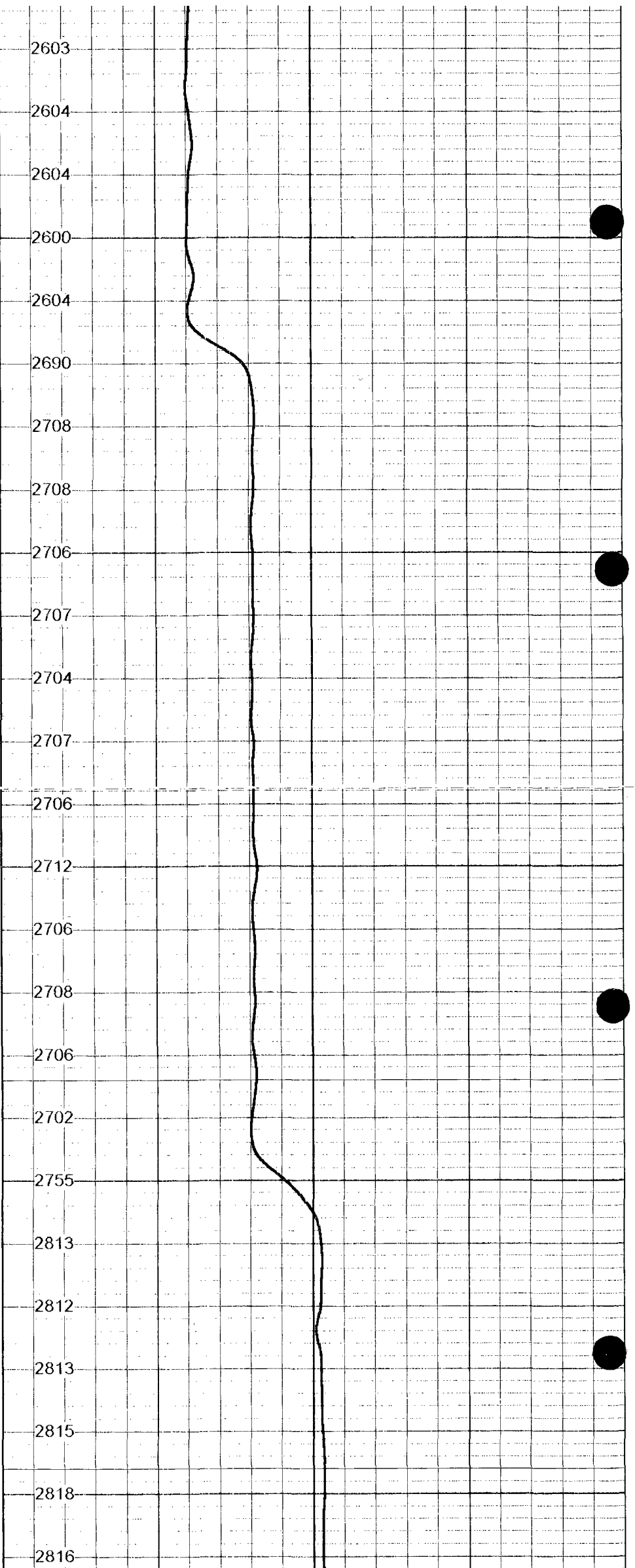


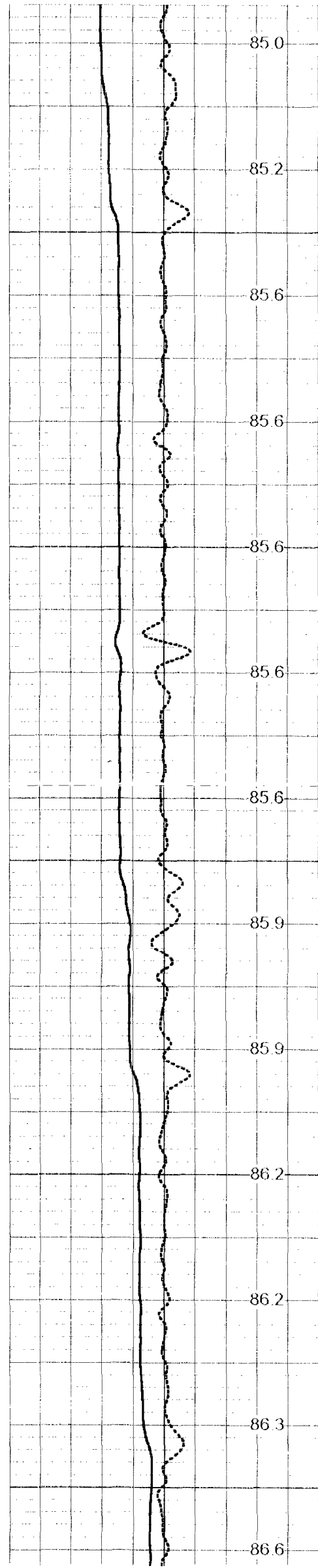


700

800

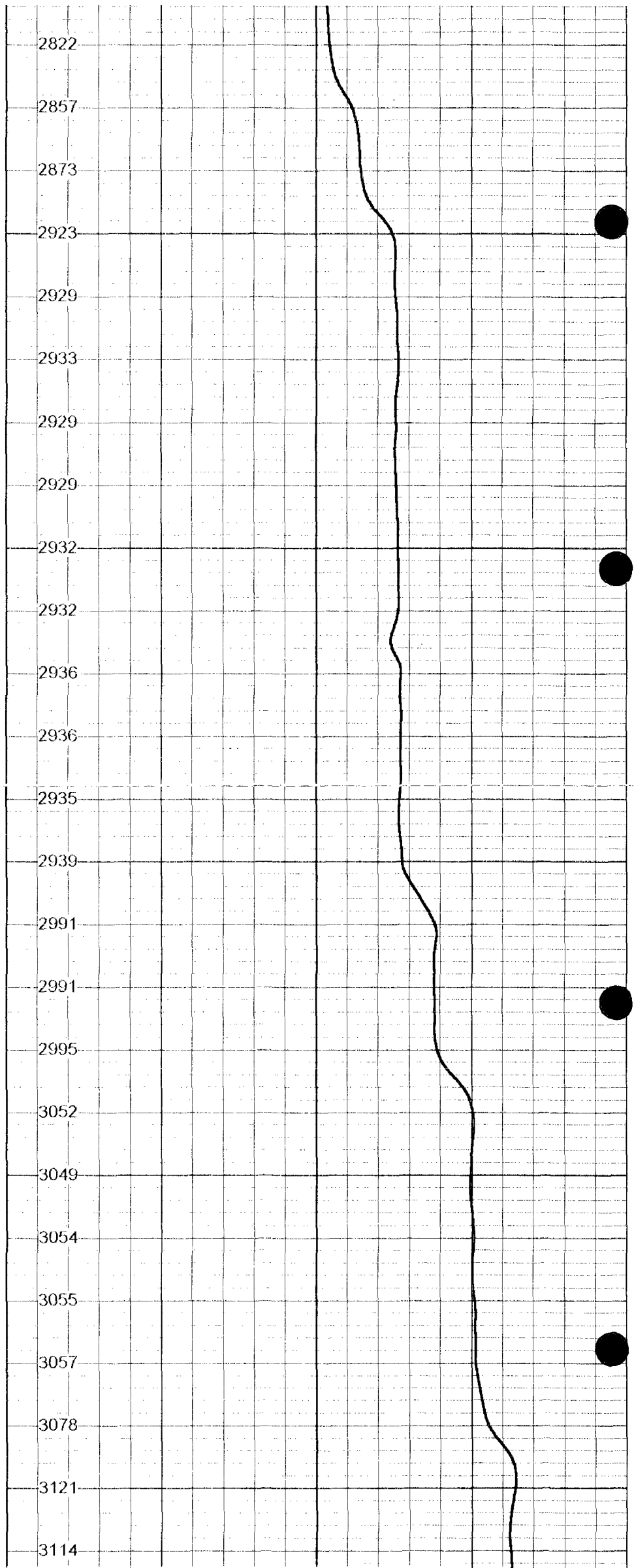
900

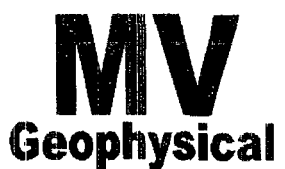
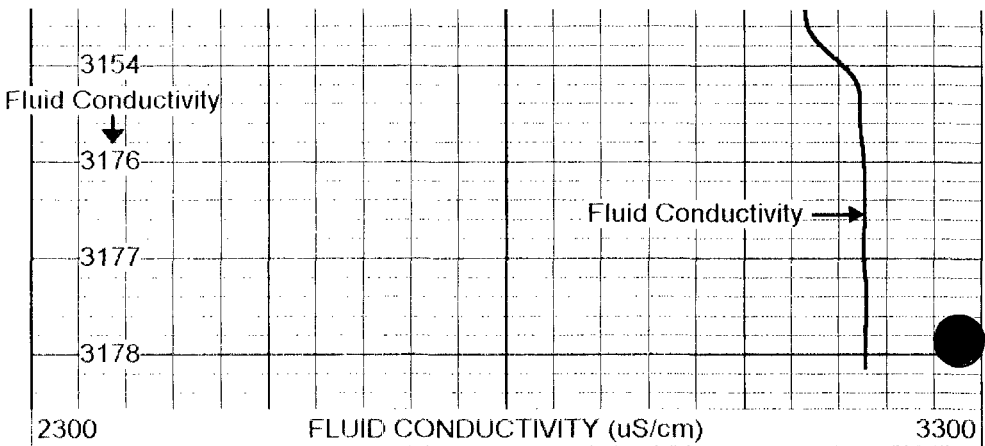
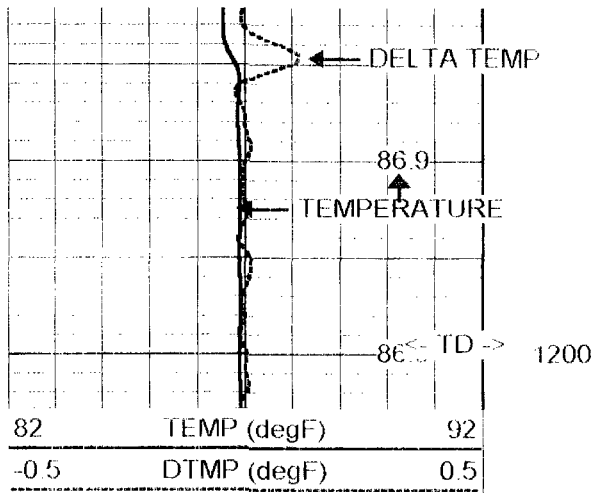




1000

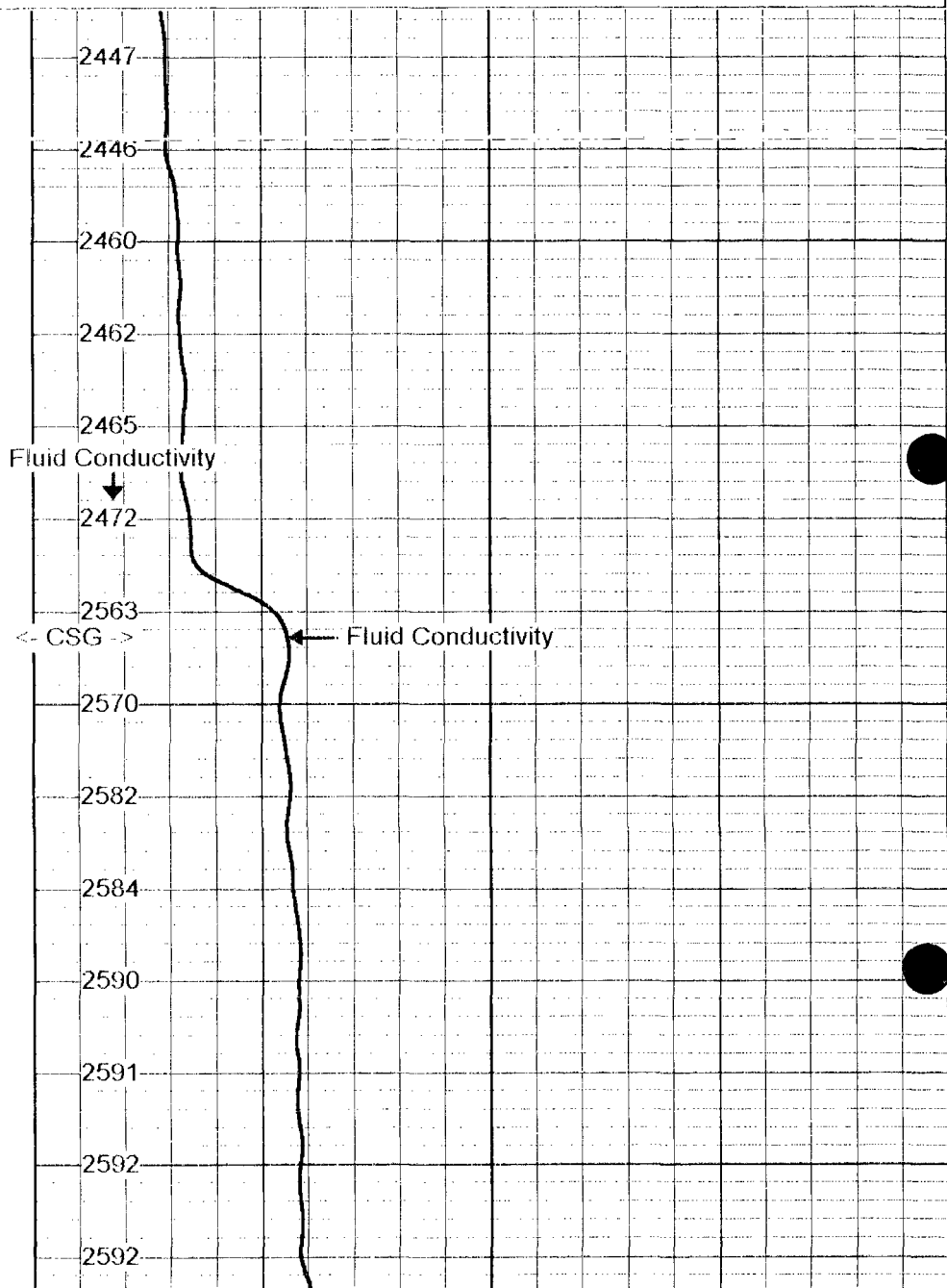
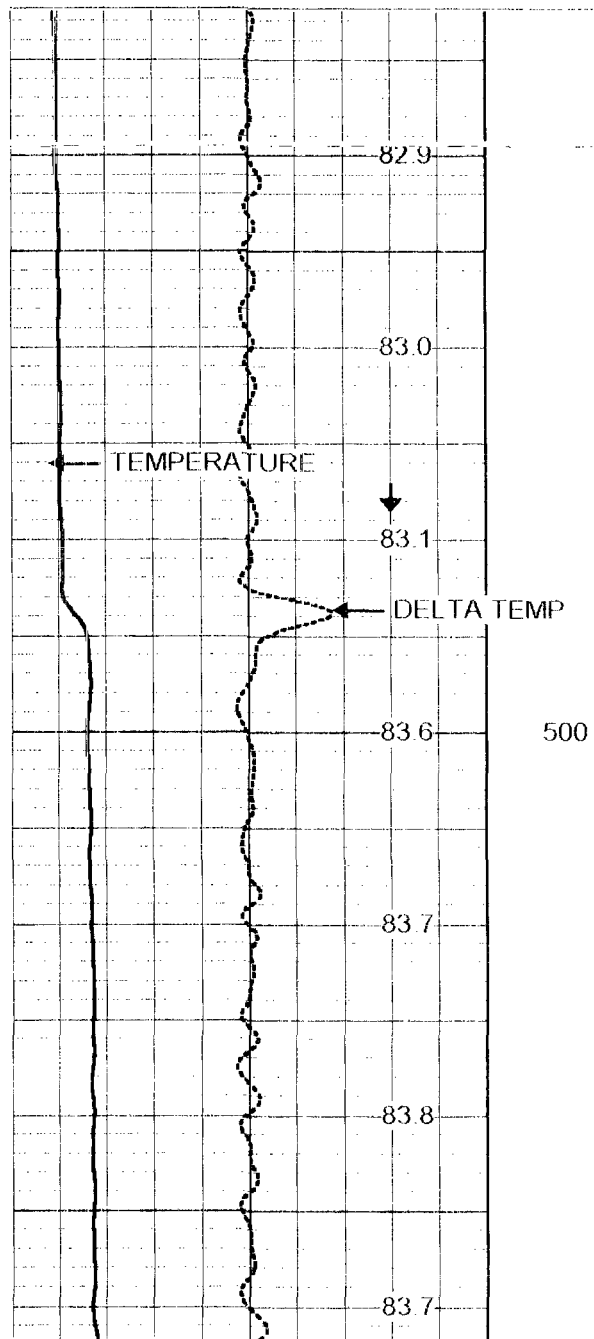
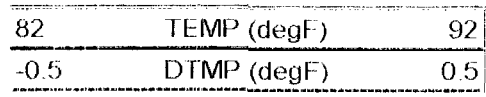
1100

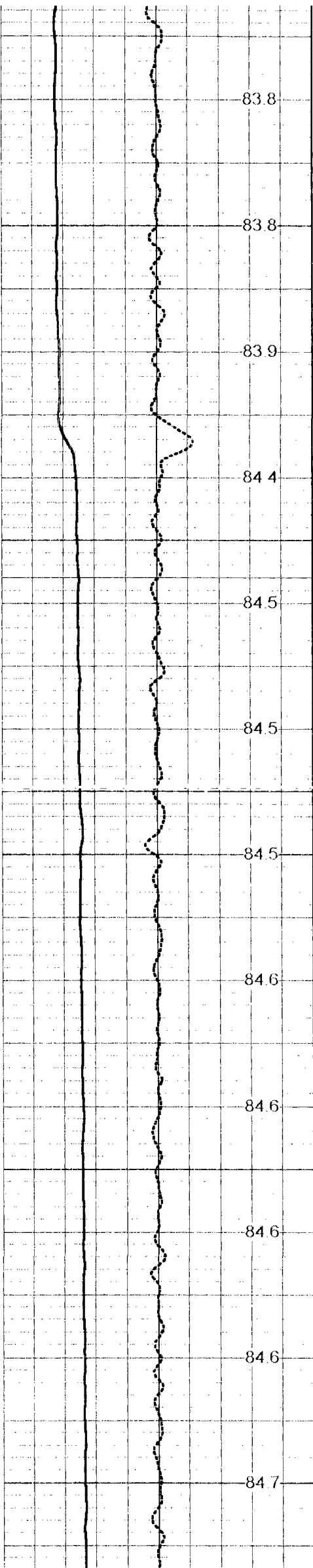




# Static FCT Down

Database File: rdc-cps4.db  
 Dataset Pathname: run3/SFCT  
 Presentation Format: fct11036.prs  
 Dataset Creation: Tue Apr 15 12:47:16 2008  
 Charted by: Depth in Feet scaled 1:240

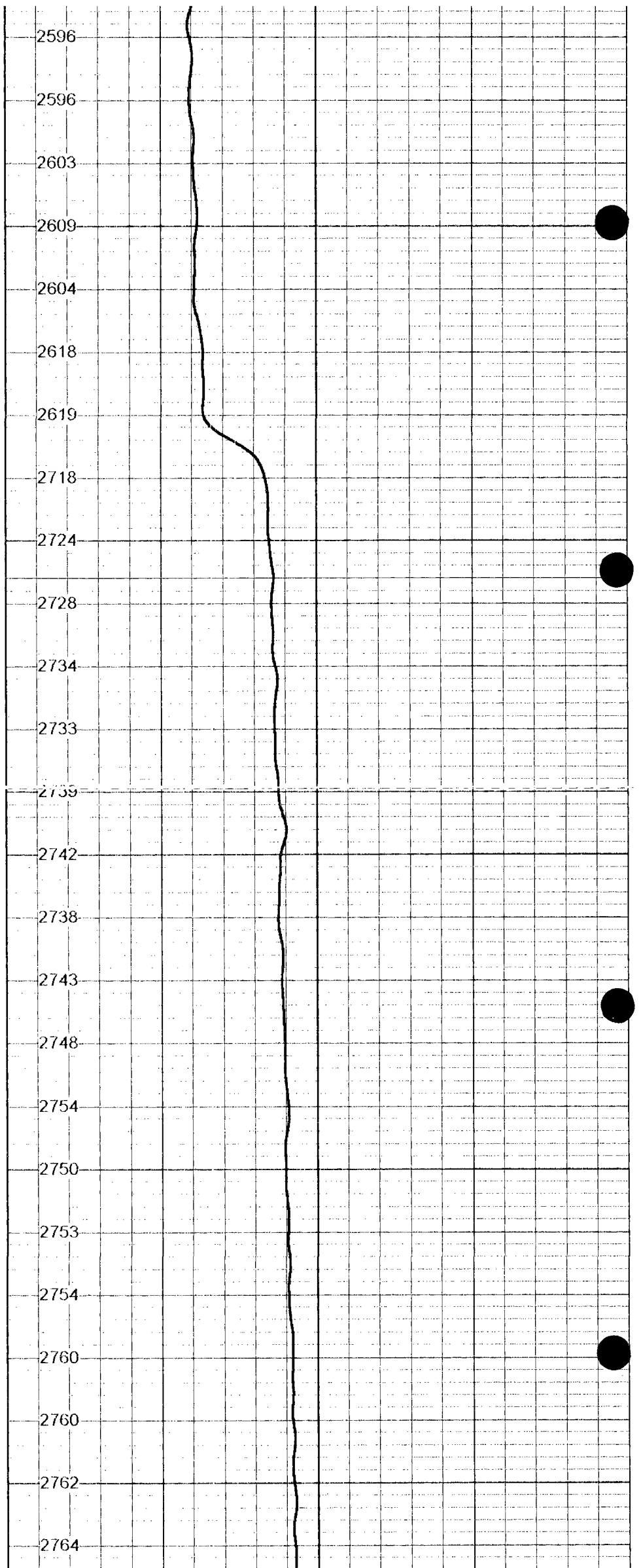


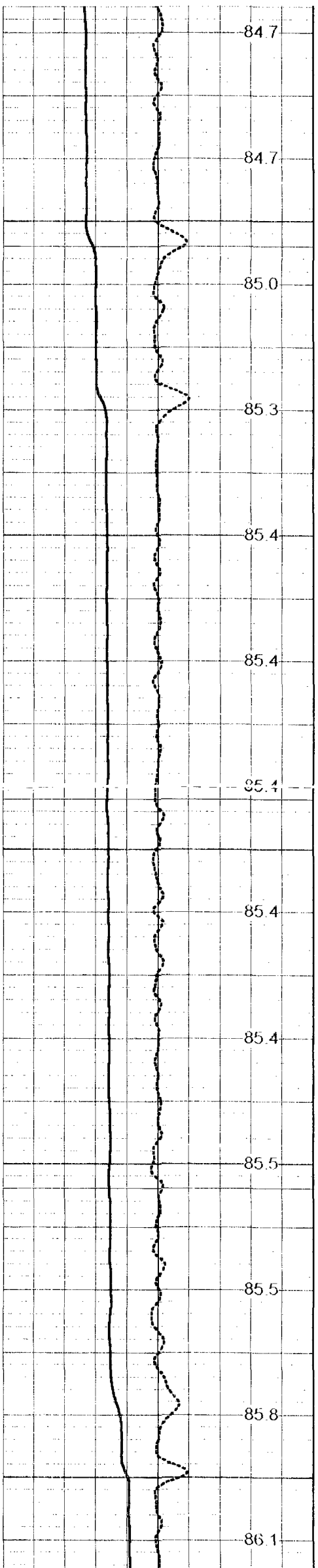


600

700

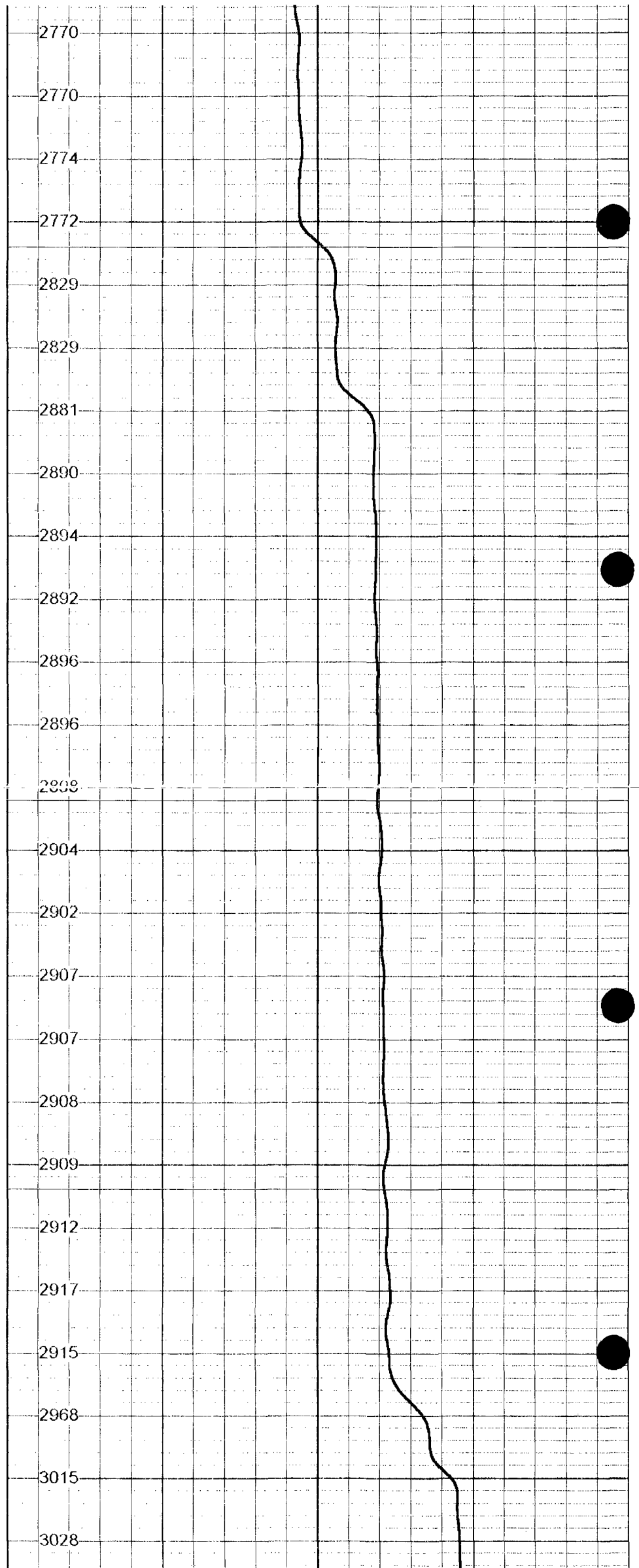
800

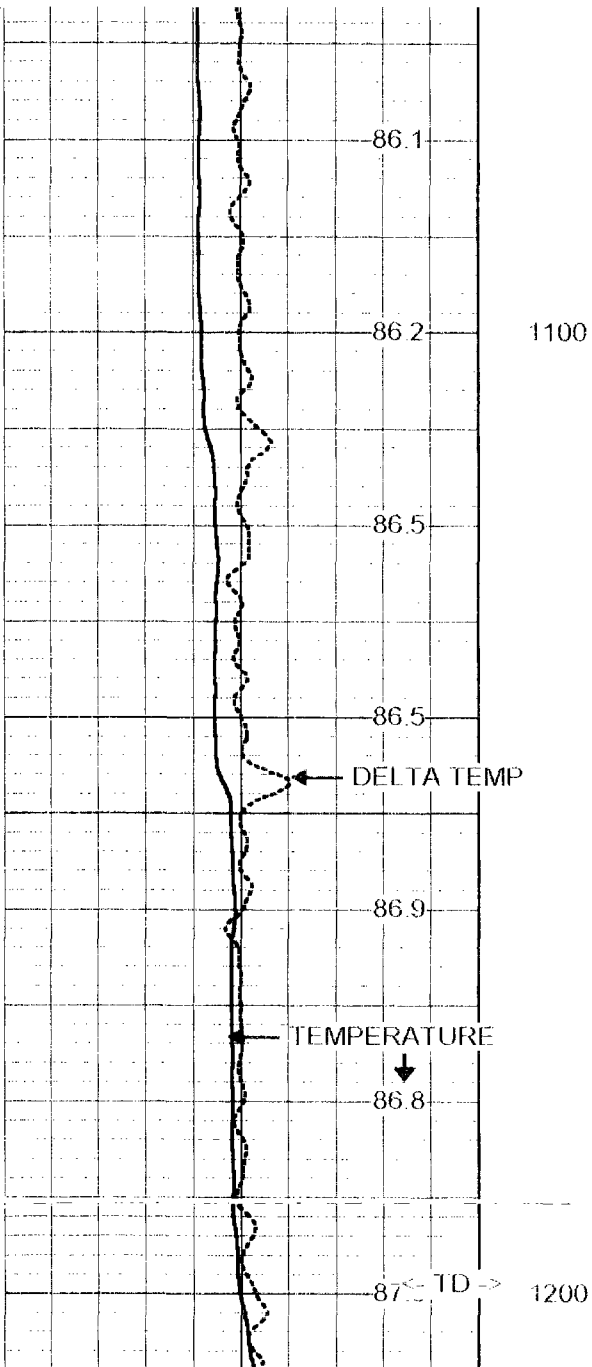




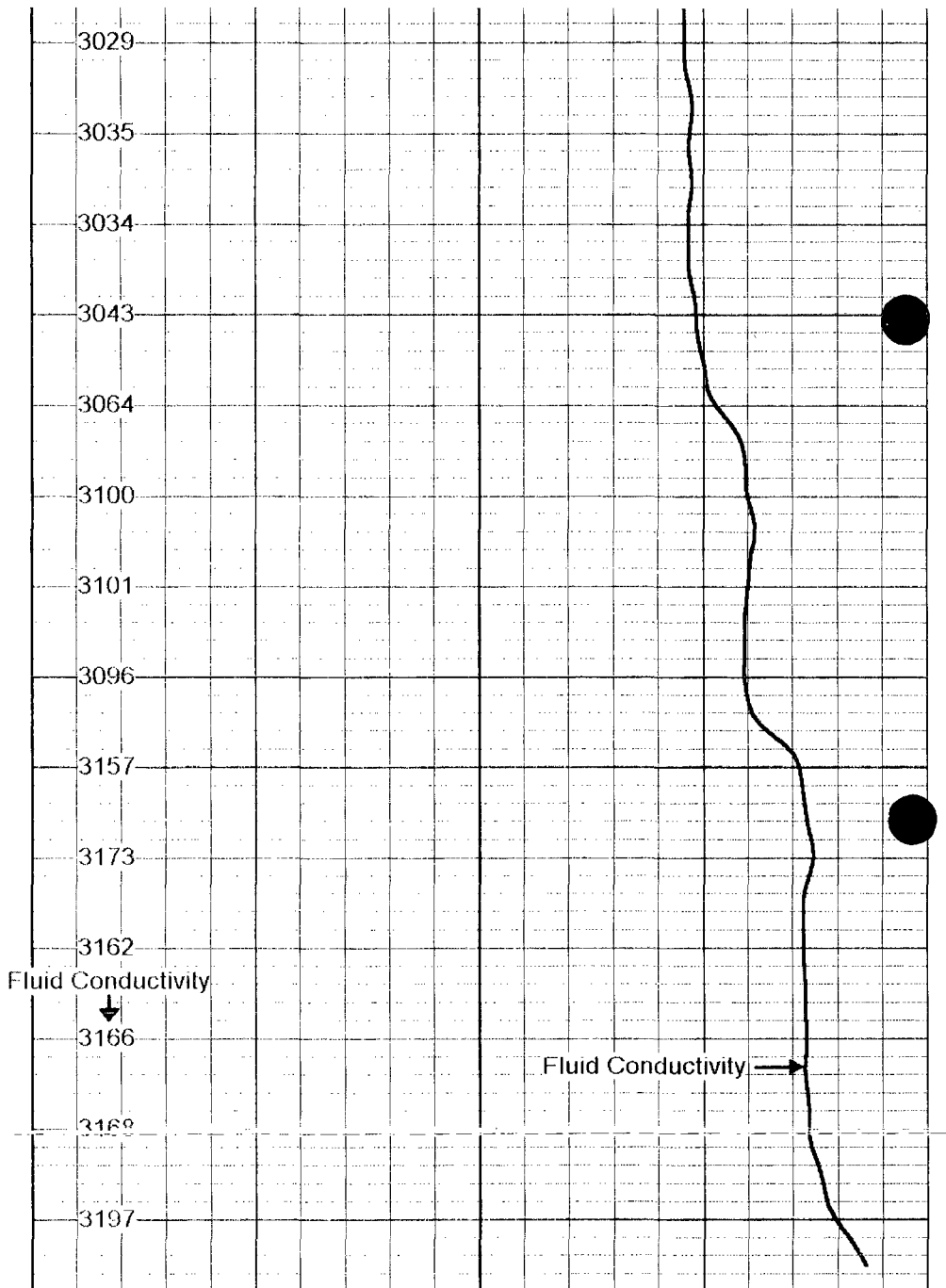
900

1000



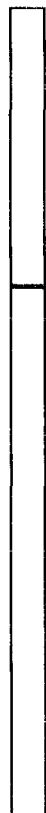


82	TEMP (degF)	92
-0.5	DTMP (degF)	0.5



2300	FLUID CONDUCTIVITY (uS/cm)	3300
------	----------------------------	------

CCL 4 46 ft



CCL-MVGS 1.9 (MV01) 8.00 lb 1.90 in OD 1.33 ft

GR #2 -RTSB (MV01B) 10.00 lb 1.90 in OD 3 33 ft



GR#2 1.15 ft



TEMP 0.10 ft

TEMP-RTS (MV01) 2.00 lb 1.90 in OD 0.46 ft

Dataset: run3/pass8  
Total Length: 5.12 ft  
Total Weight: 20.00 lb  
O.D.: 1.90 in

