

WACS # 986602



**FLUID CONDUCTIVITY
RESISTIVITY - TEMPERATURE
LOG**

OCT 20 2007

SOUTH DISTRICT
Company Diversified Drilling Corporation
Well CPS2 ASR2 L1032
Field Cape Coral
County Lee
State/Prv Florida

Company Diversified Drilling Corp.
Well CPS2 ASR2 L1032
Field Cape Coral
County Lee
State/Prv Florida

Location
 Cape Coral ASR Project - CPS2 Site
 NE Corner of SW 5th PL & Mohawk PKWY
 Cape Coral Water Utilities Department-MWH

| | | | |
|------------------------|----|-----------|----------------|
| Permanent Datum | GL | Elevation | Other Services |
| Log Measured From | GL | | XY/GR, DIL |
| Drilling Measured From | GL | | BHC, FLOW |
| | | | FCT, DHTV |
| | | | Elevation |
| | | | K.B. |
| | | | D.F. |
| | | | GL |

| | | |
|------------------------|---------------------|------------------|
| Date | 19-OCT-2007 S | 22-OCT-2007 D |
| Run Number | THREE | THREE-B |
| Depth Driller | 1200' | |
| Depth Logger | 1199' | |
| Bottom Logged Interval | 1199' | |
| Top Log Interval | 345' | |
| Open Hole Size | 9.625" | |
| Type Fluid | H2O | |
| Density / Viscosity | na/na | |
| Max. Recorded Temp. | na | |
| Estimated Cement Top | NA | |
| Time Well Ready | 07:30 10/19/2007 | |
| Time Logger on Bottom | 12:45 10/19/2007 | 13:45 10/22/2007 |
| Equipment Number | MVGS-1 | |
| Location | Fl. Myers | |
| Recorded By | S. Miller/C. Miller | |
| Witnessed By | B. Fatt (MWH) | R. Thorp (DDC) |

| | | | |
|------------------------|--------|----------------------|-------------|
| Borehole Record | | Tubing Record | |
| Run Number | Bit | From | To |
| ONE | 12.25" | 40' | 483' |
| TWO | 32" | 40' | 455' |
| THREE | 9.625" | 455' | 1200' |
| Casing Record | Size | Wd/Ft | Top |
| Surface String | 34" | .375" WT | SURFACE |
| Prot. String | 28" | .375" WT | SURFACE |
| Production String | | | 450' Logger |
| Liner | | | CC-L1032 |

*** Fold Here ***

All interpretations are opinions based on inferences from electrical or other measurements and we cannot and do not guarantee the accuracy or correctness of any interpretation, and we shall not, except in the case of gross or willful negligence on our part, be liable or responsible for any loss, costs, damages, or expenses incurred or sustained by anyone resulting from any interpretation made by any of our officers, agents or employees. These interpretations are also subject to our general terms and conditions set out in our current Price Schedule.

Comments

STATIC and DYNAMIC DOWN passes were performed.
 Cw=51,000 uS/cm @ 93.0 degF (Dynamic Sample). Q =~850 gpm.
FLUID RESISTIVITY CALIBRATION REPORT (Performed: 24-SEP-07 14:45)

| | |
|--------|---------|
| uS/cm | CPS |
| 2014.7 | 2994.69 |
| 4425.8 | 2715.25 |
| 8892.1 | 2435.37 |

TEMPERATURE CALIBRATION REPORT (Performed: 24-SEP-07 15:45)

| | |
|-------|---------|
| DEG-F | CPS |
| 38.6 | 147.852 |
| 148.1 | 2690.22 |

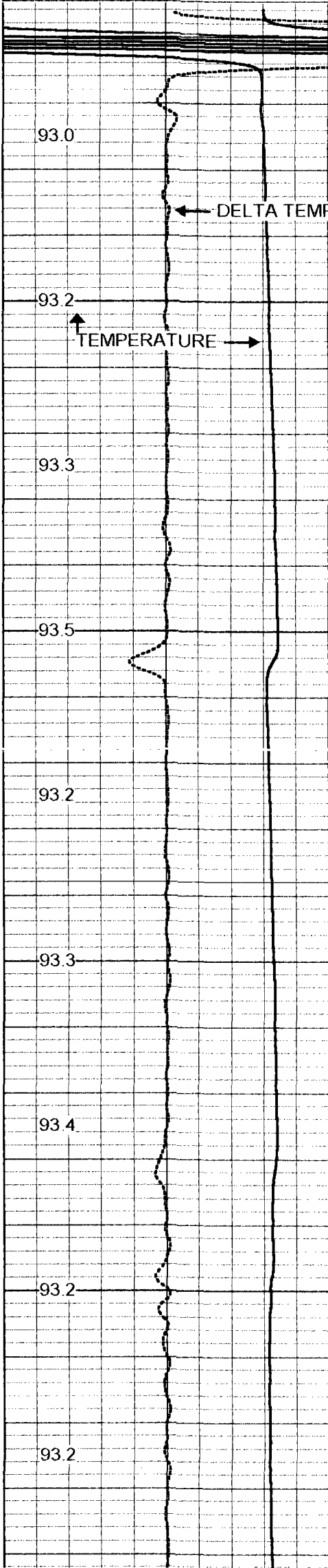


DYNAMIC FCT DOWN

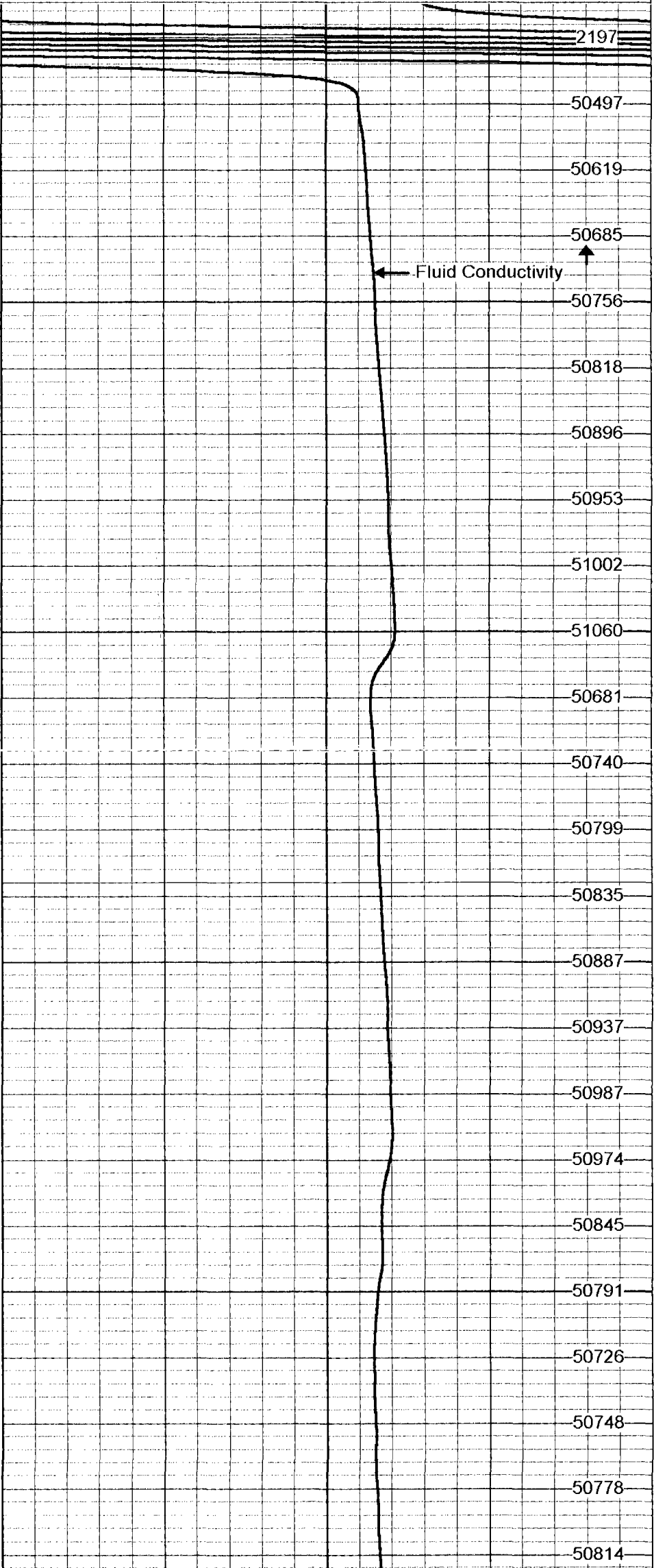
Database File: cc-I1032.db
 Dataset Pathname: run3/DFCT
 Presentation Format: fct1032.prs
 Dataset Creation: Mon Oct 22 14:35:42 2007
 Charted by: Depth in Feet scaled 1:240

85 TEMP (degF) 95
-0.5 DTMP (degF) 0.5

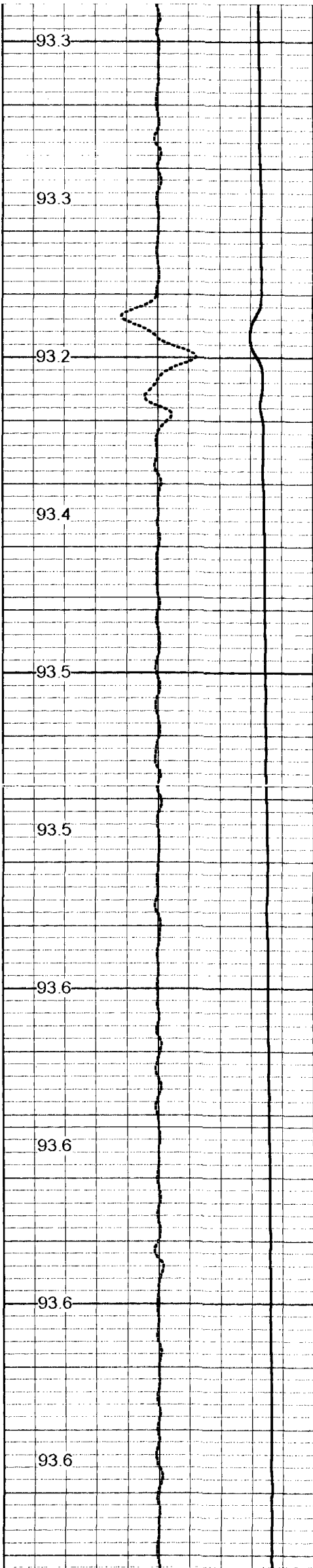
45000 FLUID CONDUCTIVITY (uS/cm) 55000



400
-< CSG ->



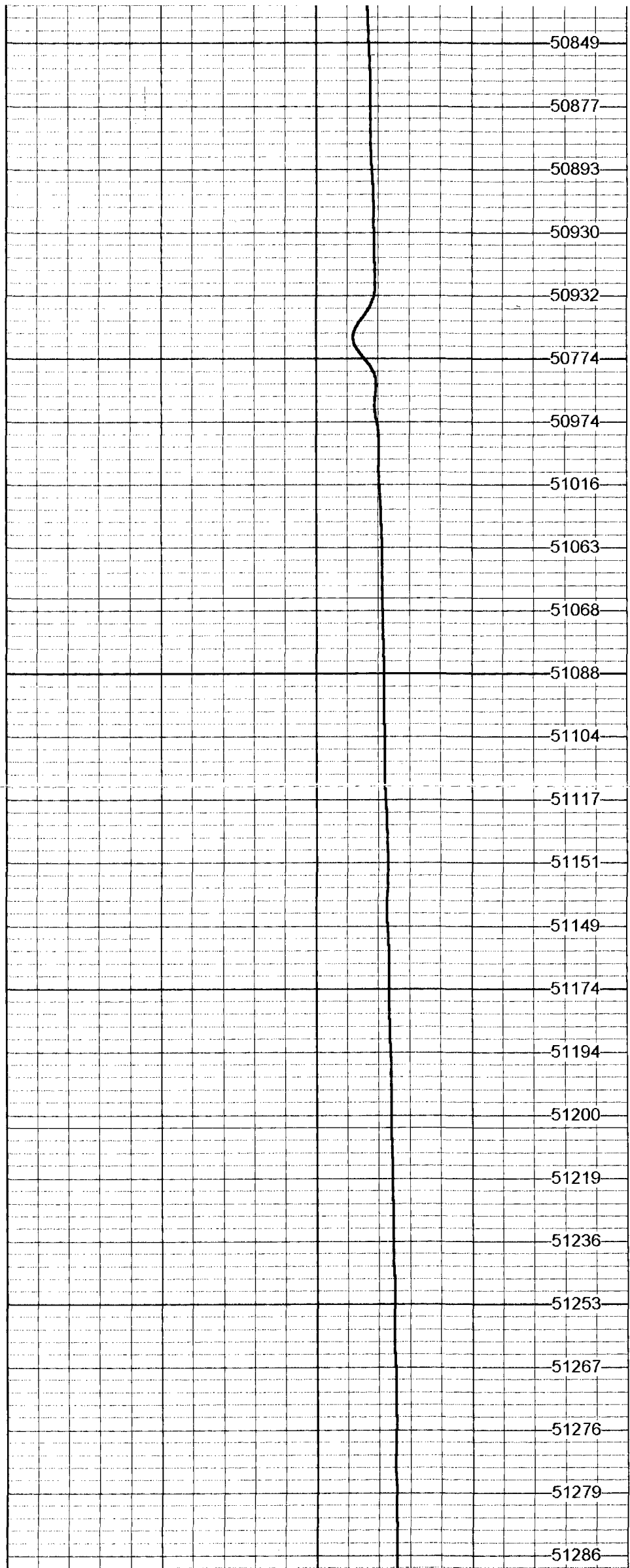
2197
50497
50619
50685
50756
50818
50896
50953
51002
51060
50681
50740
50799
50835
50887
50937
50987
50974
50845
50791
50726
50748
50778
50814



600

700

800



50849

50877

50893

50930

50932

50774

50974

51016

51063

51068

51088

51104

51117

51151

51149

51174

51194

51200

51219

51236

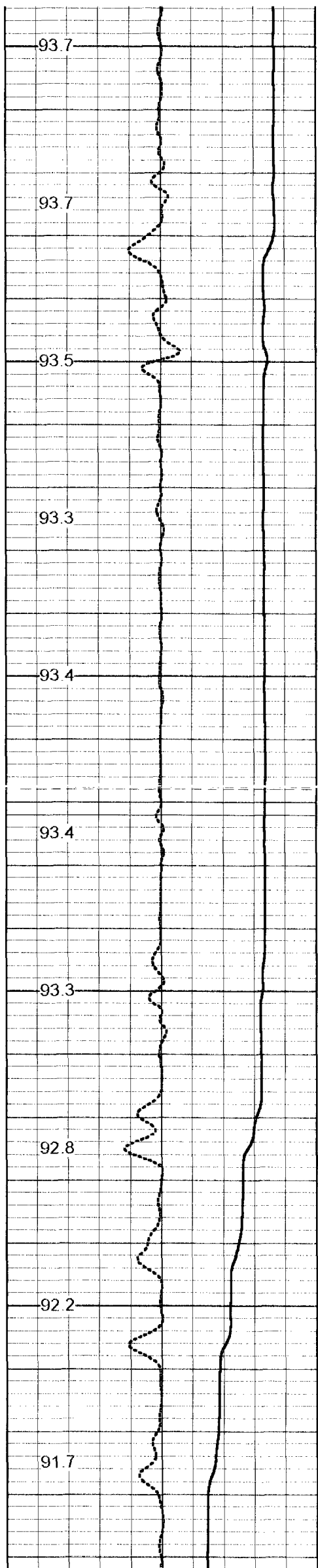
51253

51267

51276

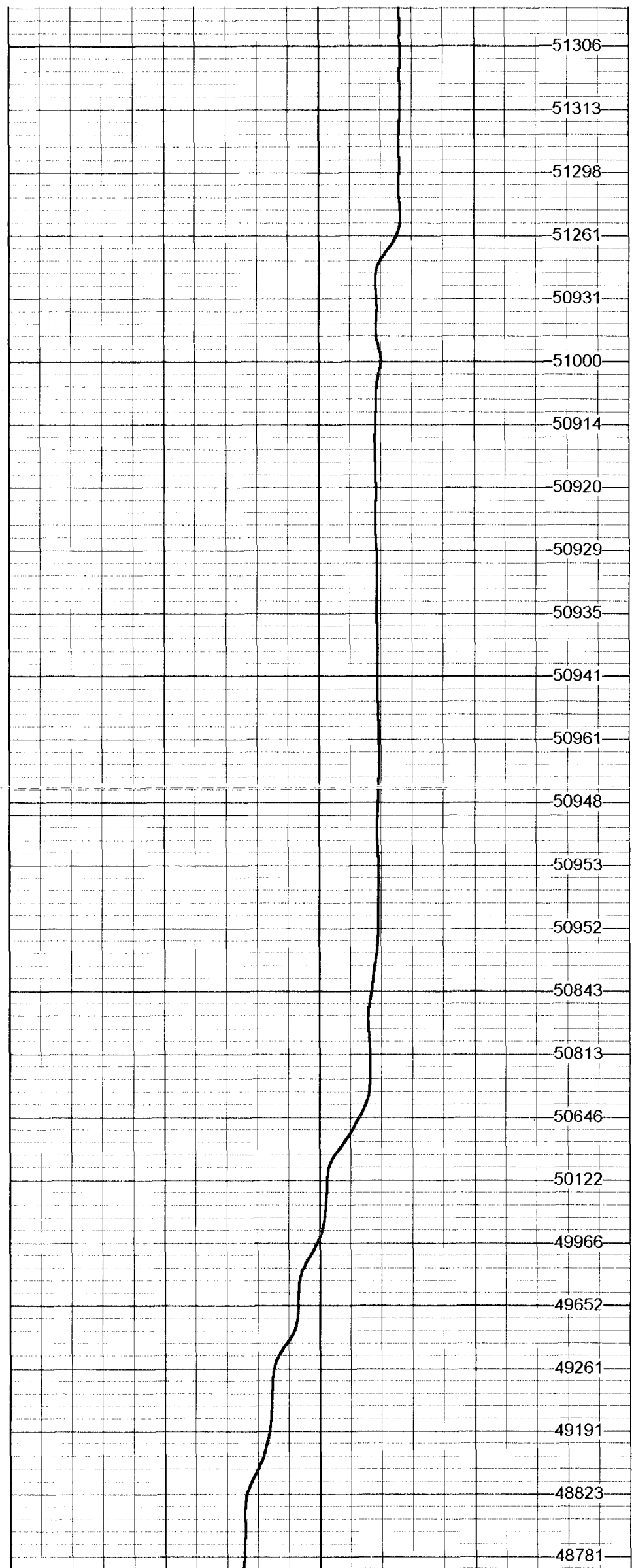
51279

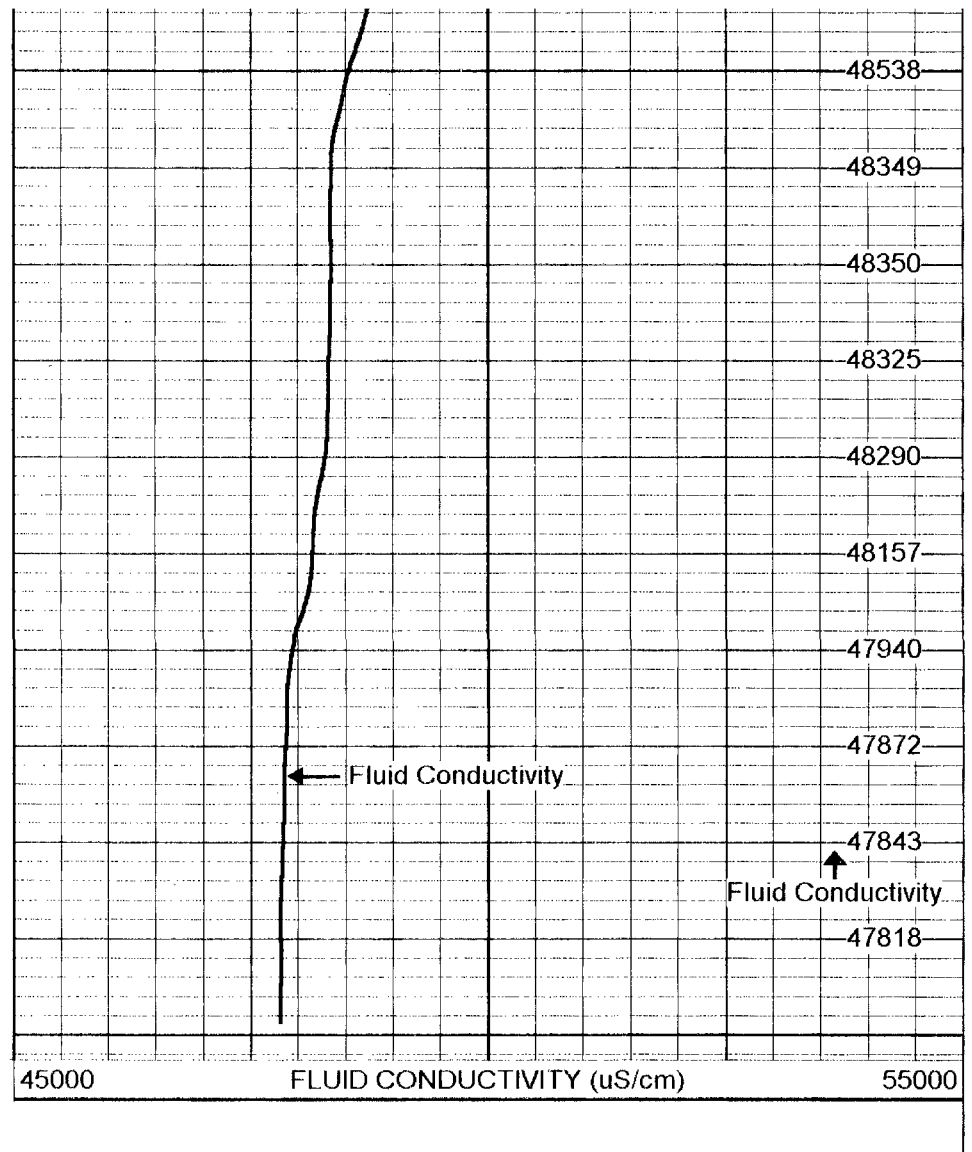
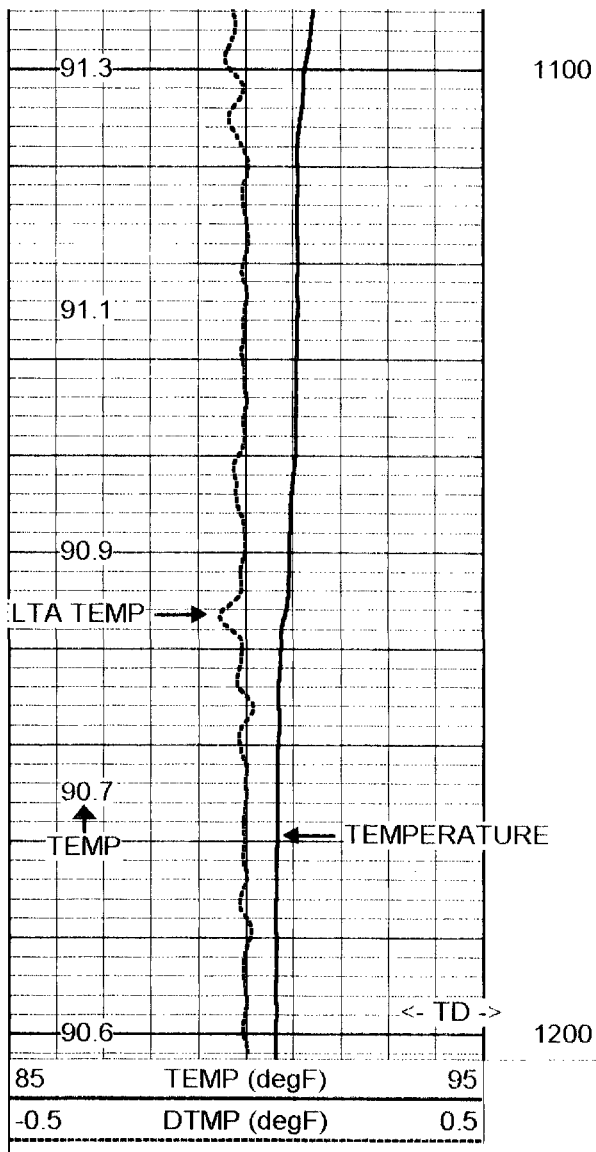
51286



900

1000



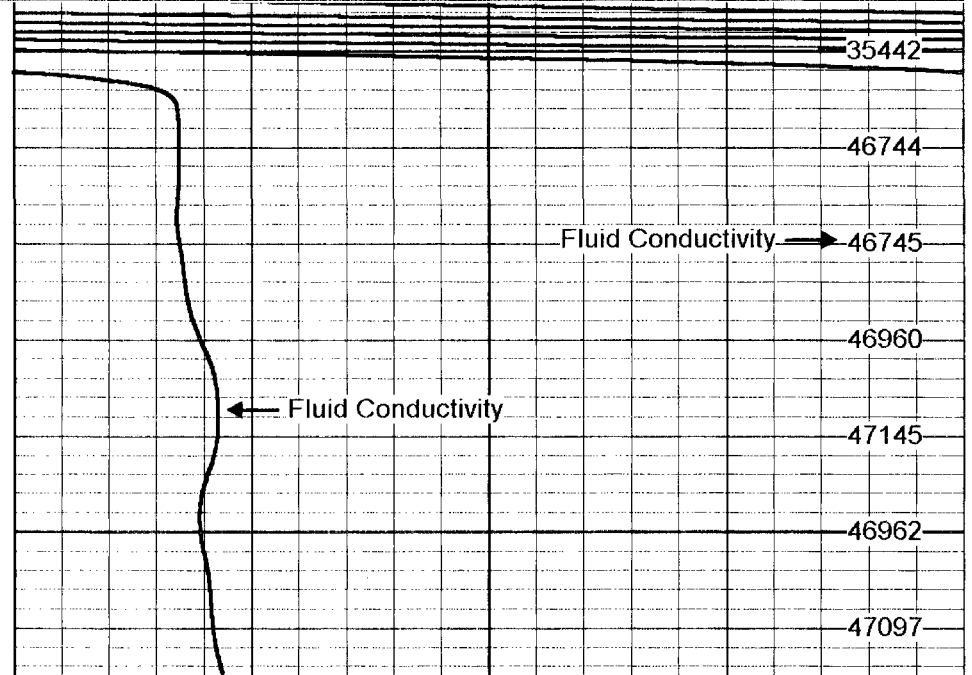
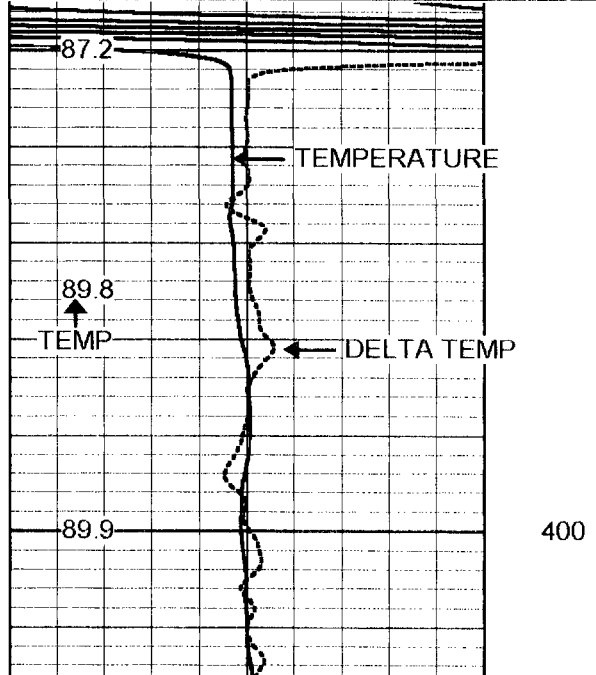


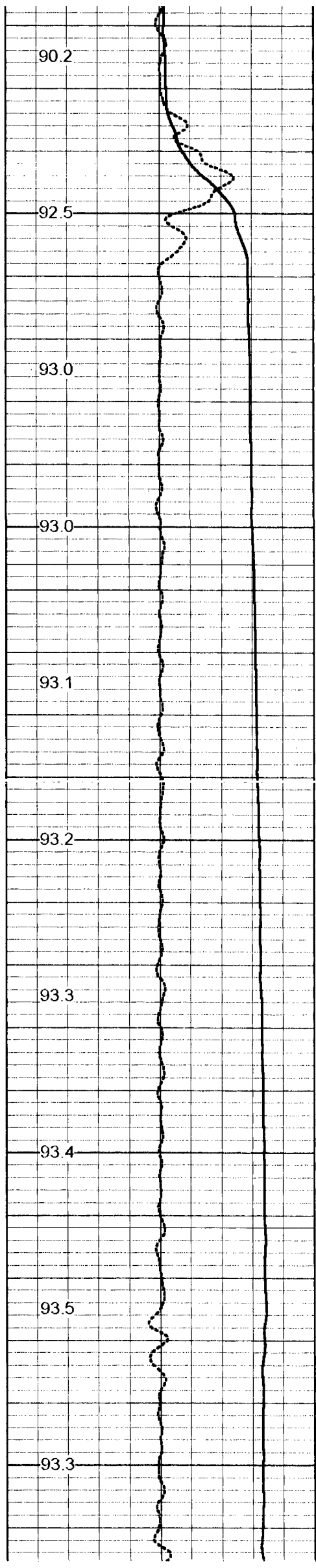
STATIC FCT DOWN

Database File: cc-11032.db
 Dataset Pathname: run3/SFCT
 Presentation Format: fctl1032.prs
 Dataset Creation: Mon Oct 22 15:08:22 2007
 Charted by: Depth in Feet scaled 1:240

85 TEMP (degF) 95
 -0.5 DTMP (degF) 0.5

45000 FLUID CONDUCTIVITY (uS/cm) 55000

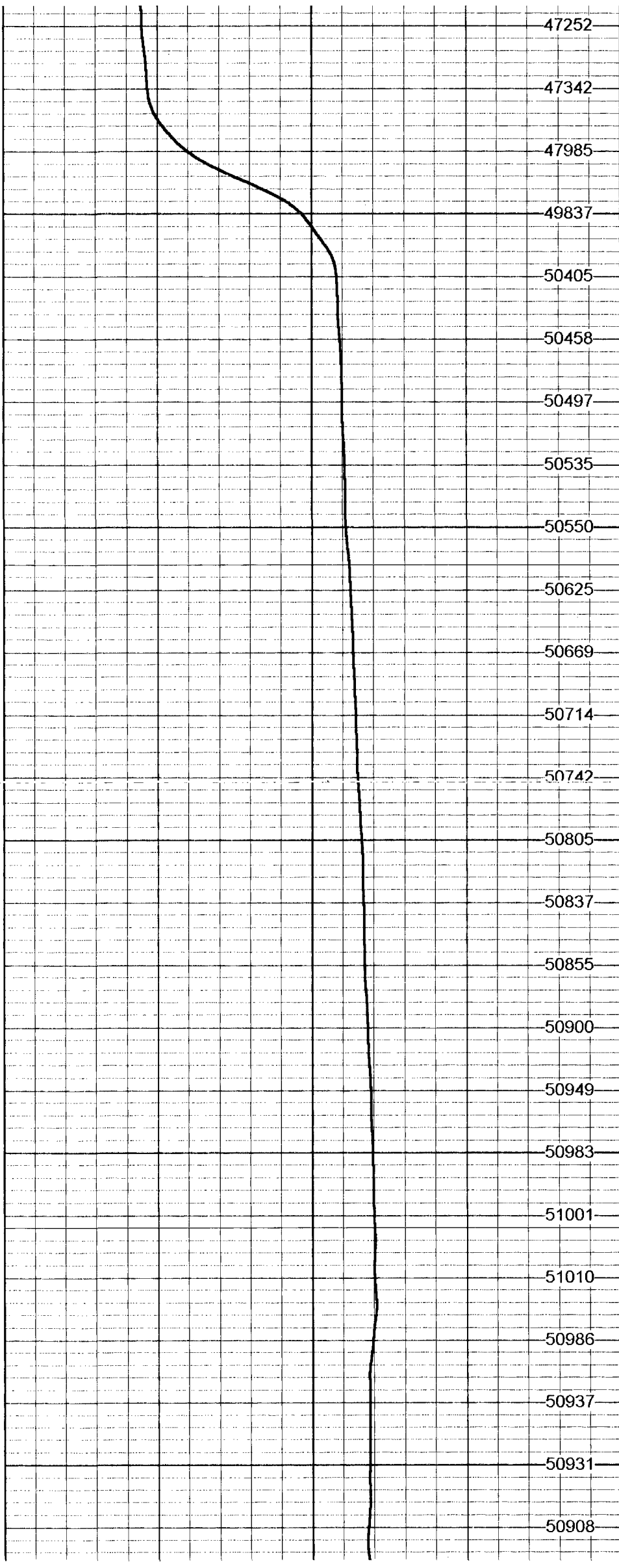




< CSG ->

500

600



47252

47342

47985

< CSG ->

49837

50405

50458

50497

50535

50550

50625

50669

50714

50742

50805

50837

50855

50900

50949

50983

51001

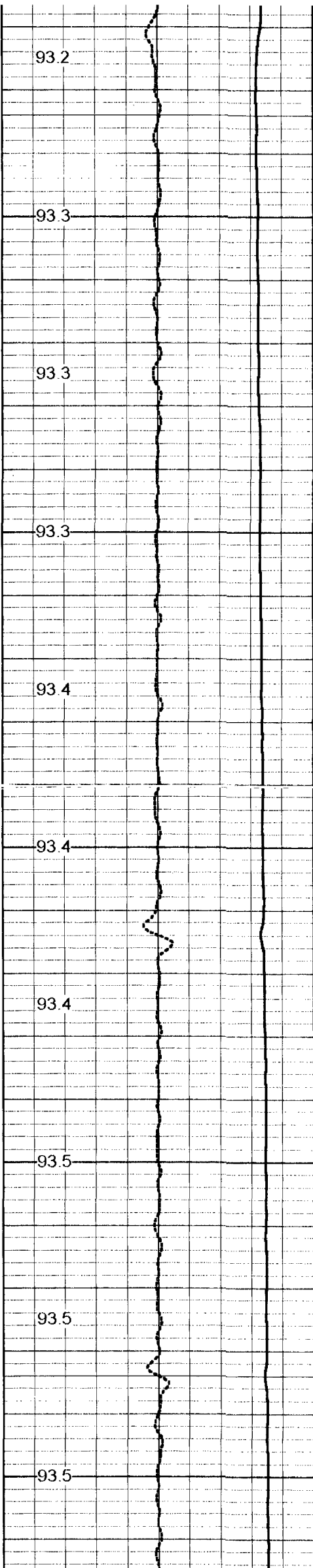
51010

50986

50937

50931

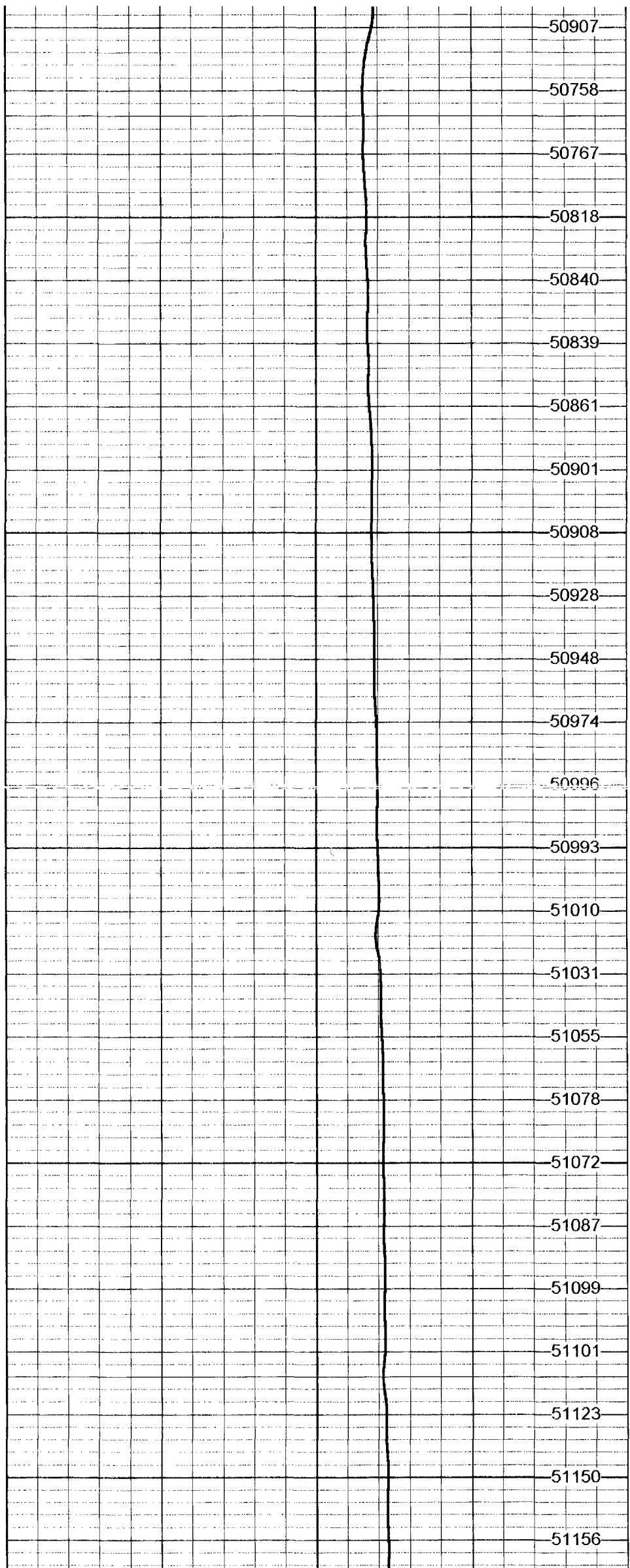
50908

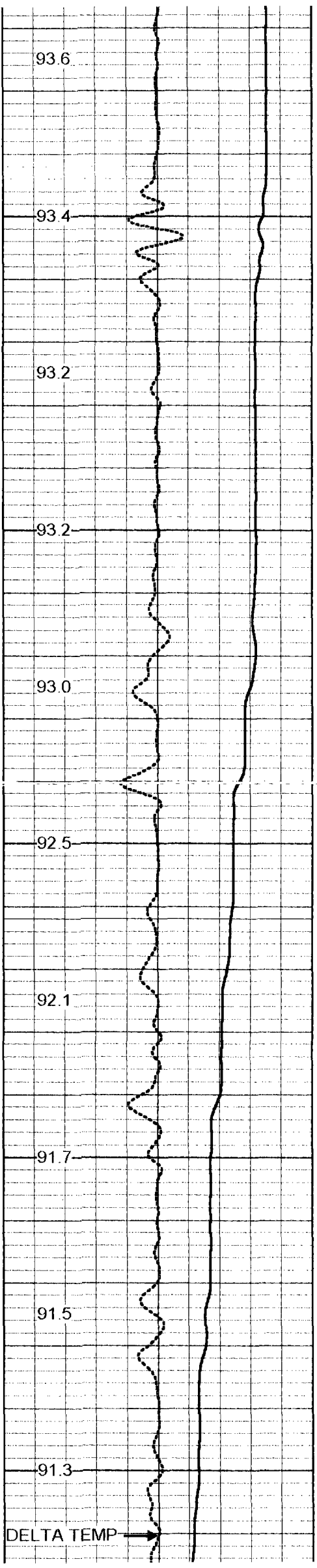


700

800

900





1000

1100

