



YOUNGQUIST BROTHERS, Inc
GEOPHYSICAL LOGGING DIVISION

FLUID CONDUCTIVITY TEMPERATURE LOG

Company CITY OF CAPE CORAL
Well IW-1
Field EVEREST W.R.F.
County LEE
State/Prv FL

Company CITY OF CAPE CORAL
Well IW-1
Field EVEREST W.R.F.
County LEE

Location
Permanent Datum PAD
Log Measured From PAD
Drilling Measured From PAD

Elevation PAD

Other Services
FLOWMETER
Elevation
K.B.
D.F.
G.L.

RECEIVED - JUNE 10 11 AM
GOSPORT DISTRICT
GOSPORT FL

Date	21-NOV-2008
Run Number	TWELVE
Depth Driller	4368' PB
Depth Logger	4348'
Bottom Logged Interval	4348'
Top Log Interval	2600'
Open Hole Size	32.5" & 12.25"
Type Fluid	WATER
Density / Viscosity	N/A
Max. Recorded Temp.	N/A
Estimated Cement Top	NA
Time Well Ready	ON ARRIVAL
Time Logger on Bottom	1100
Equipment Number	101
Location	FT. MYERS
Recorded By	CATHEY
Witnessed By	J. LARGEY

Borehole Record		Borehole Record	
Run Number	Bit	From	To
ONE	12.25"	CASING	490'
TWO	50.5"	CASING	480'
FOUR	12.25"	CASING	1700'
FIVE	40"	CASING	1692'

Borehole Record		Borehole Record	
Run Number	Bit	From	To
SEVEN	12.25"	CASING	3404'
EIGHT	32.5"	CASING	3250'
NINE	12.25"	CASING	4397'

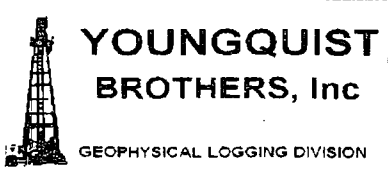
Borehole Record		Borehole Record	
Run Number	Bit	From	To
ONE	12.25"	CASING	490'
TWO	50.5"	CASING	480'
FOUR	12.25"	CASING	1700'
FIVE	40"	CASING	1692'

<<< Fold Here >>>

All interpretations are opinions based on inferences from electrical or other measurements and we cannot and do not guarantee the accuracy or correctness of any interpretation, and we shall not, except in the case of gross or willful negligence on our part, be liable or responsible for any loss, costs, damages, or expenses incurred or sustained by anyone resulting from any interpretation made by any of our officers, agents or employees. These interpretations are also subject to our general terms and conditions set out in our current Price Schedule.

Comments

DYNAMIC FLOWRATE = 8600 GPM

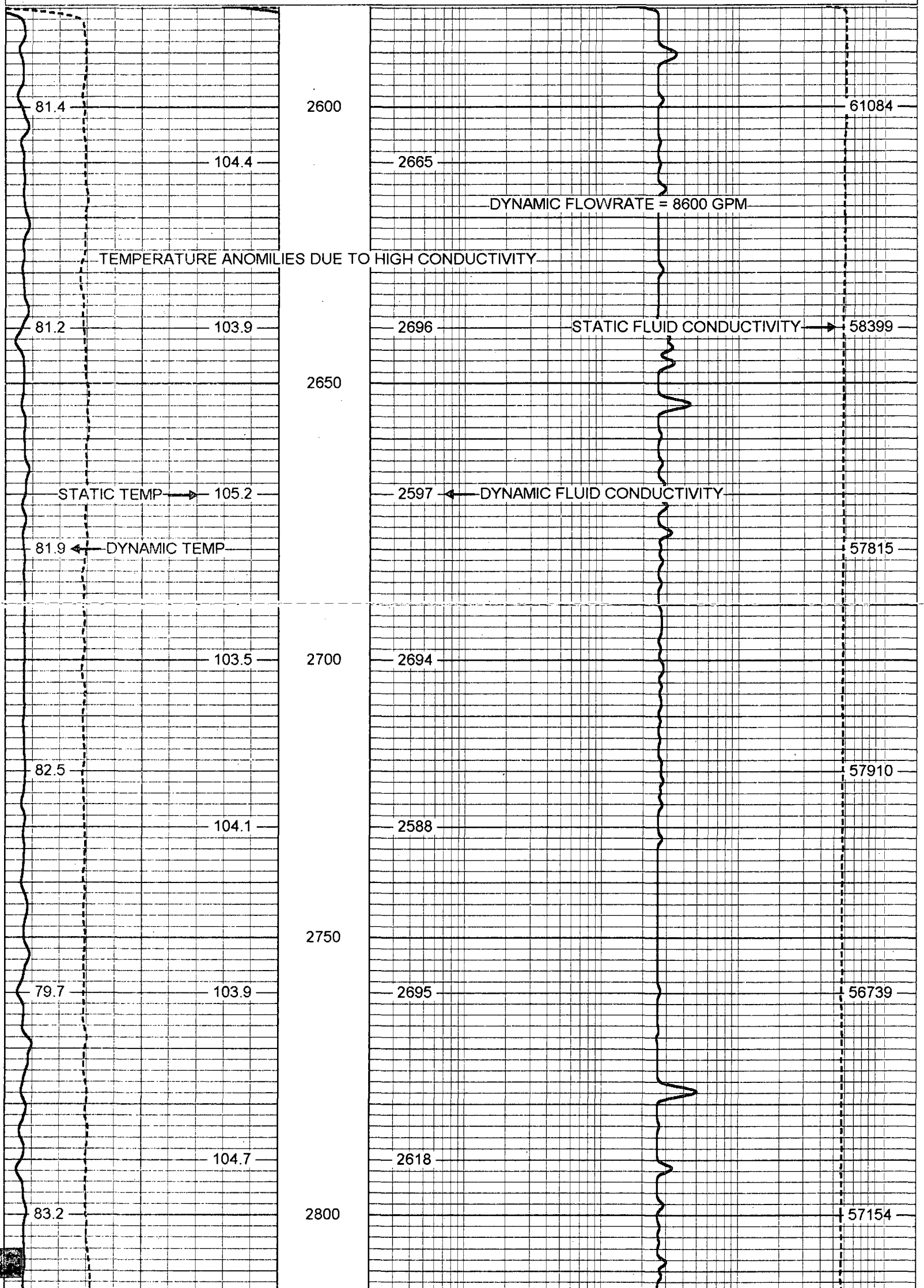


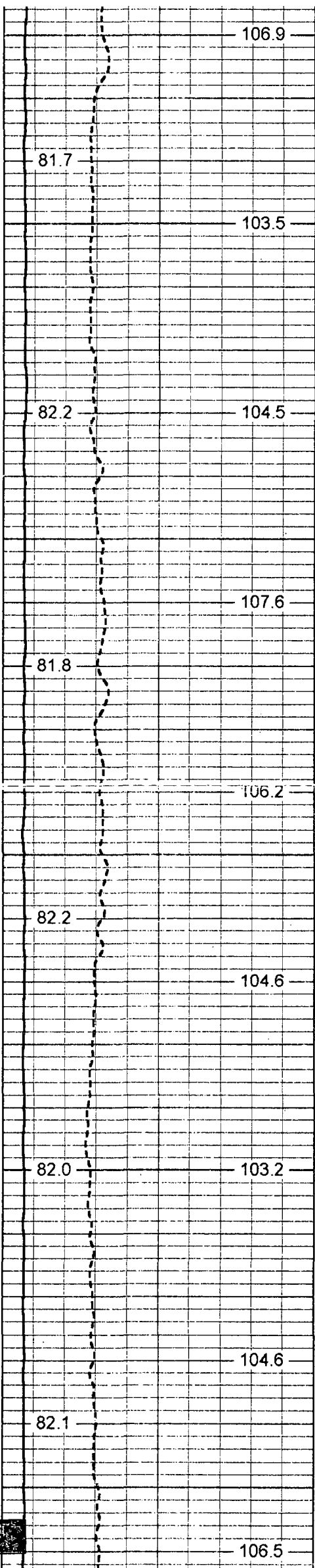
MERGED FCT

Database File: cceverst.db
 Dataset Pathname: run12/pass6
 Presentation Format: frt_mg
 Dataset Creation: Fri Nov 21 15:25:01 2008 by Log 6.2_B4
 Charted by: Depth in Feet scaled 1:240

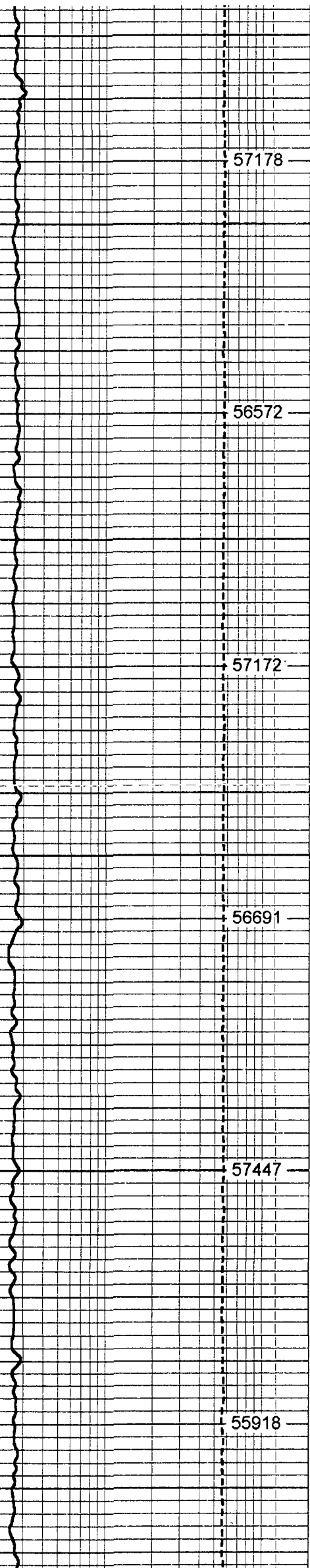
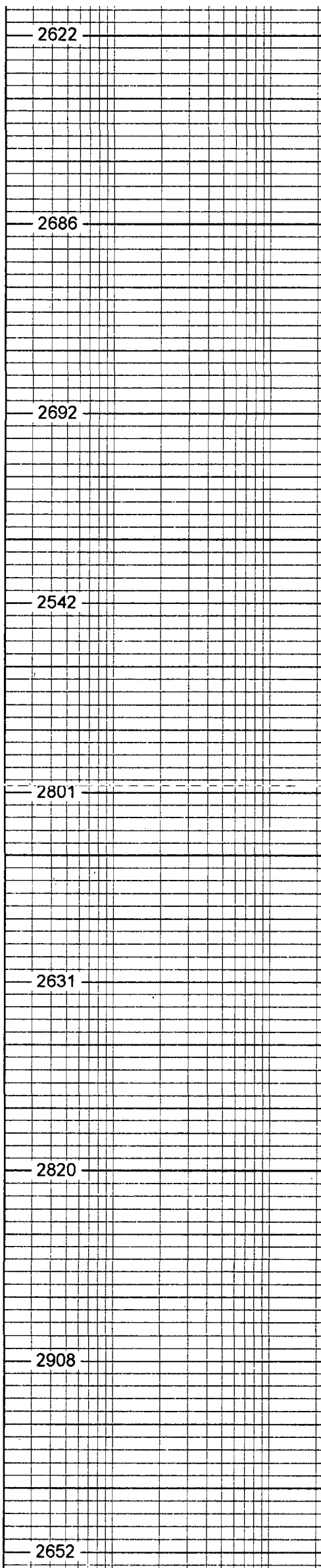
75	STATIC TEMP (degF)	175
75	DYNAMIC TEMP (degF)	175

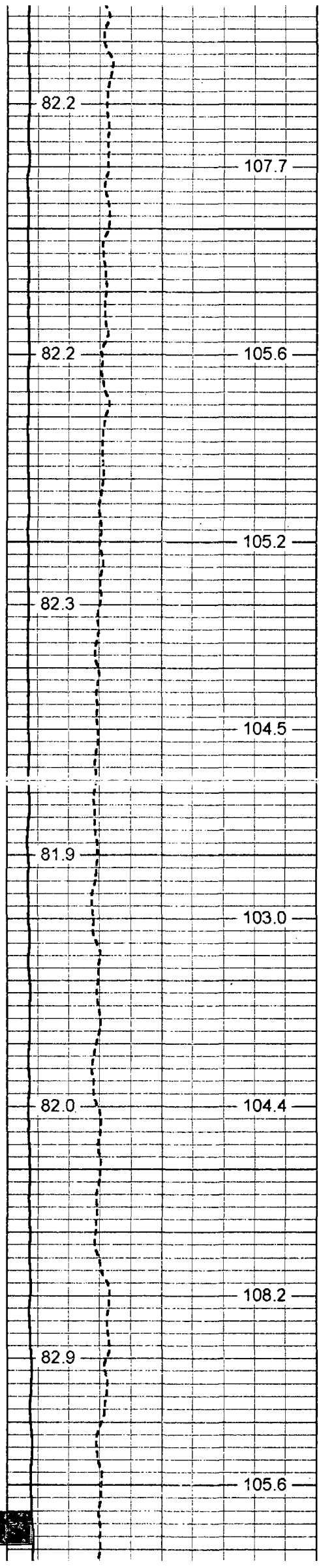
20	STATIC FLUID CONDUCTIVITY	200000
20	DYNAMIC FLUID CONDUCTIVITY	200000





2850
2900
2950
3000
3050





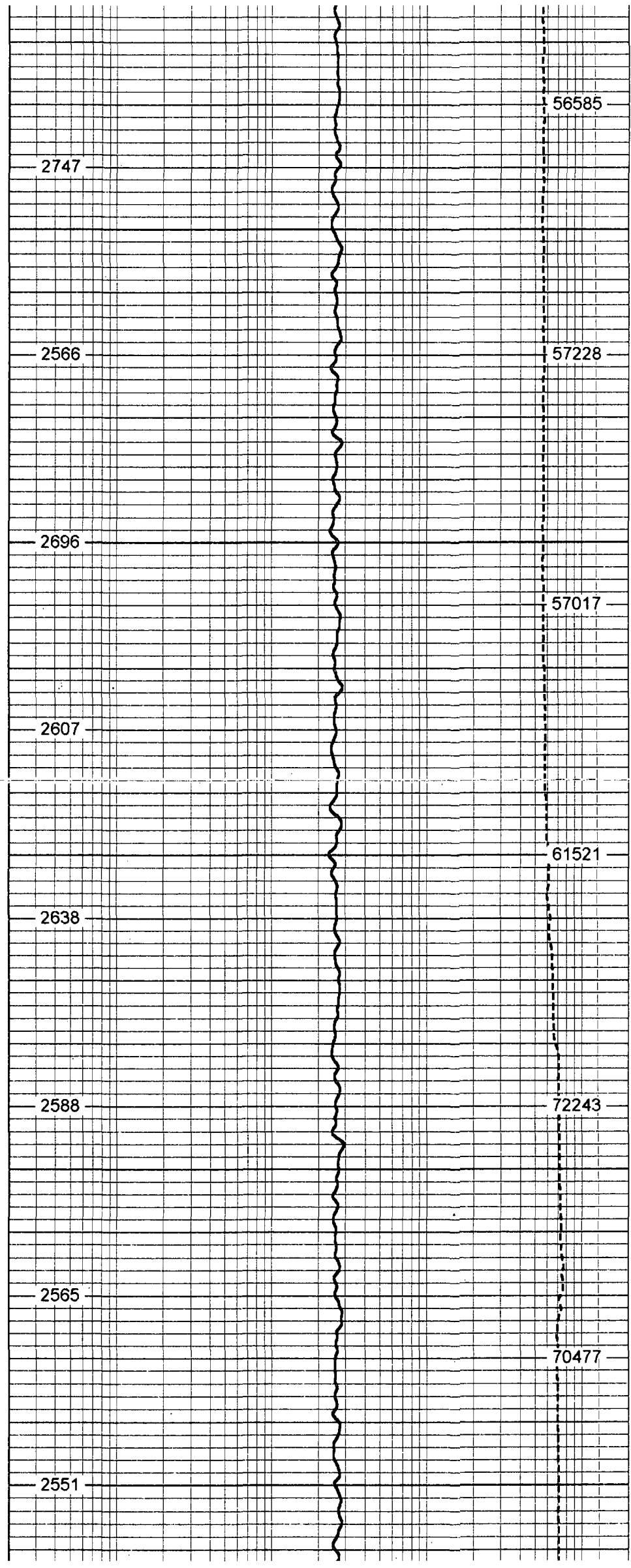
3100

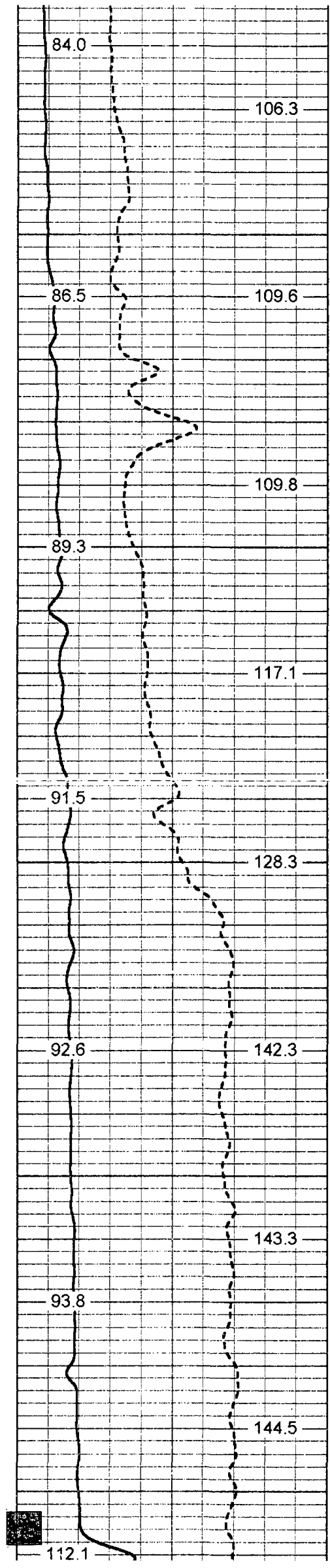
3150

3200

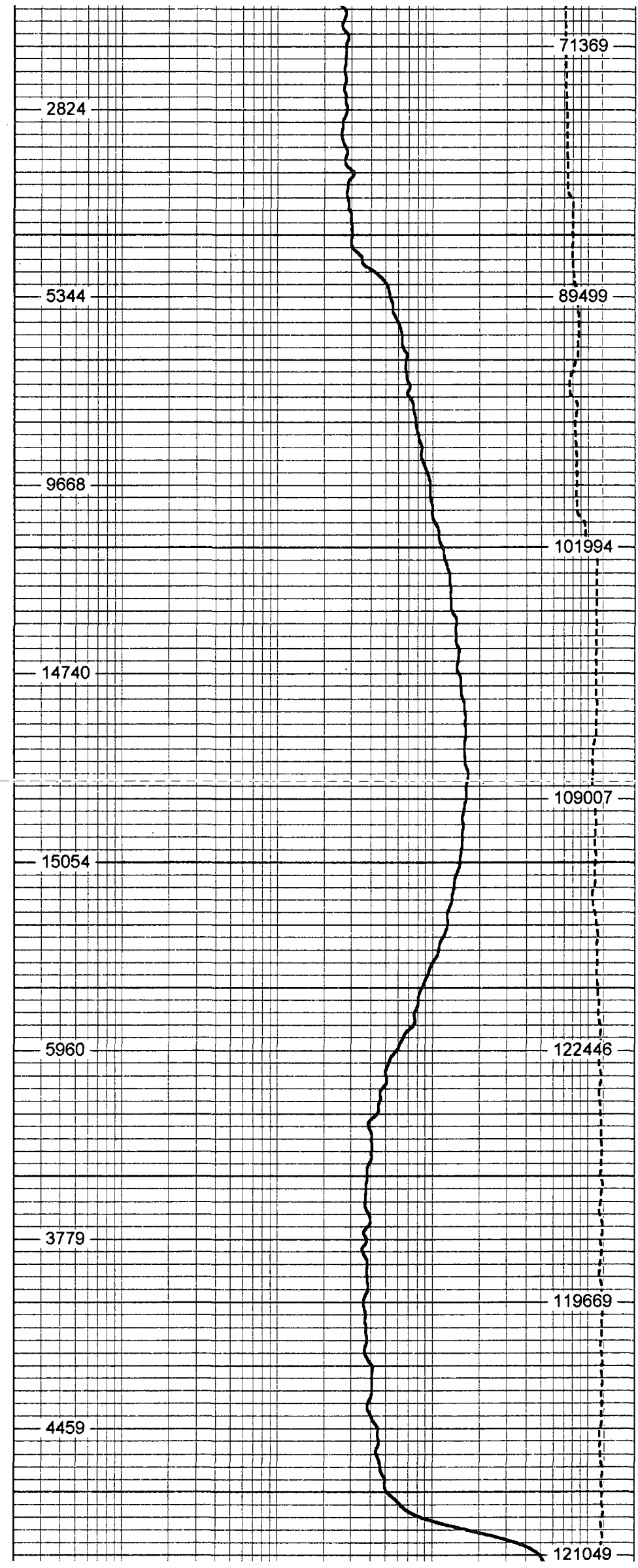
3250

3300

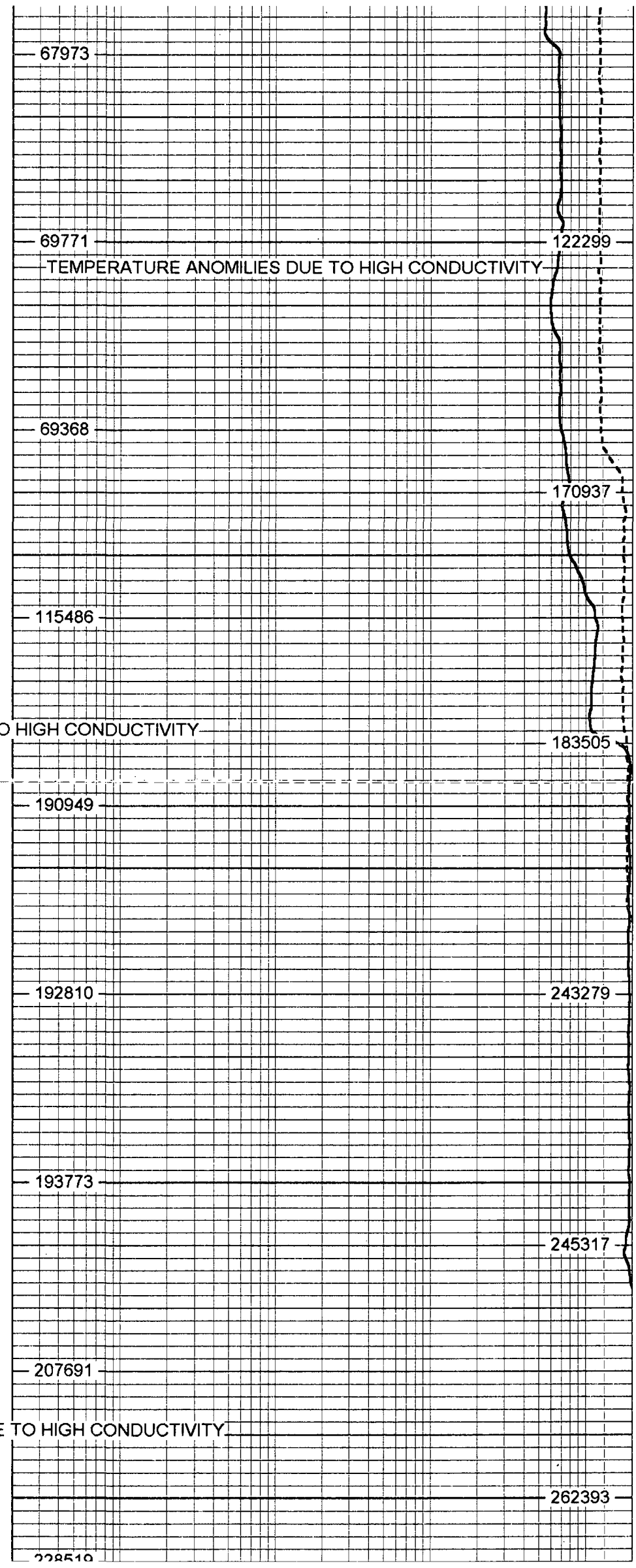
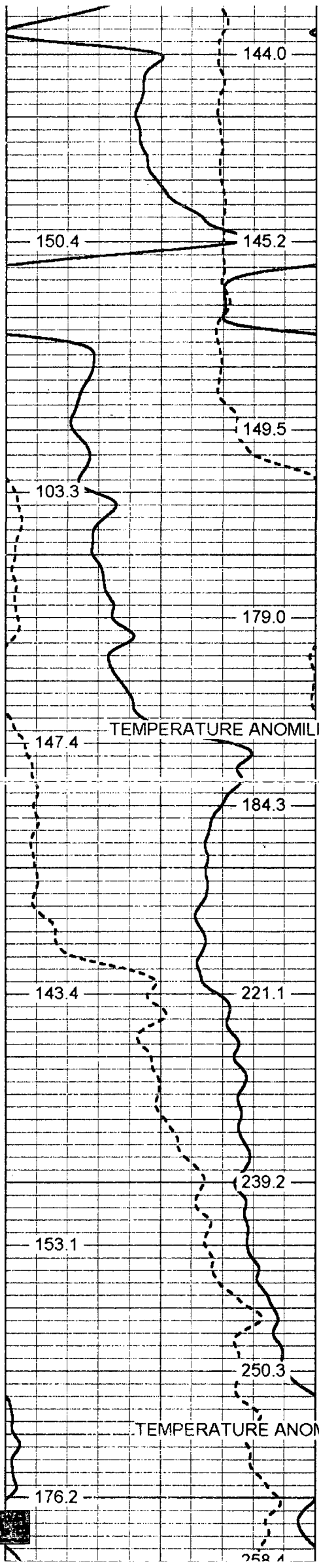




3350
3400
3450
3500
3550



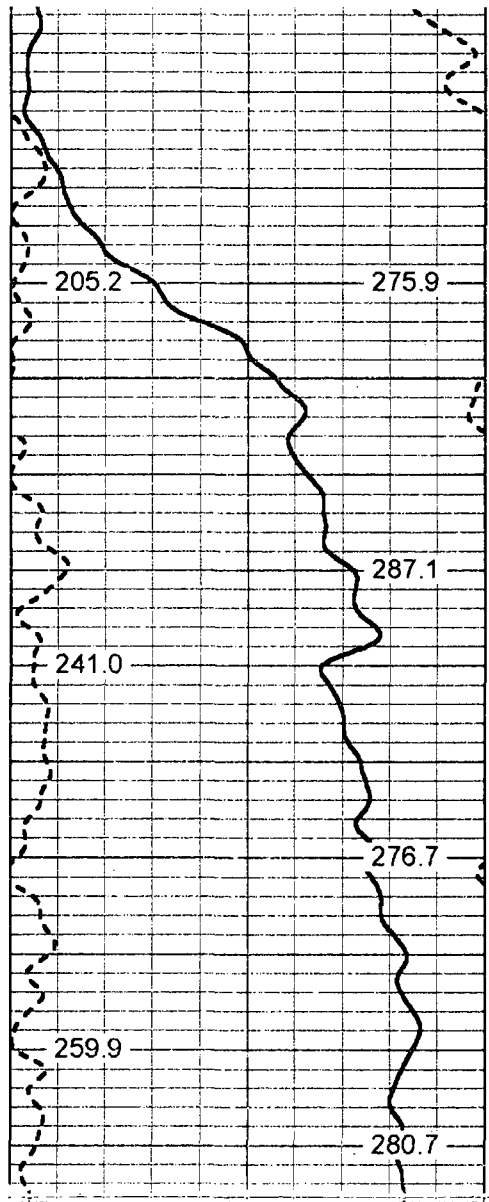
2824
5344
9668
14740
15054
5960
3779
4459



TEMPERATURE ANOMILIES DUE TO HIGH CONDUCTIVITY

TEMPERATURE ANOMILIES DUE TO HIGH CONDUCTIVITY

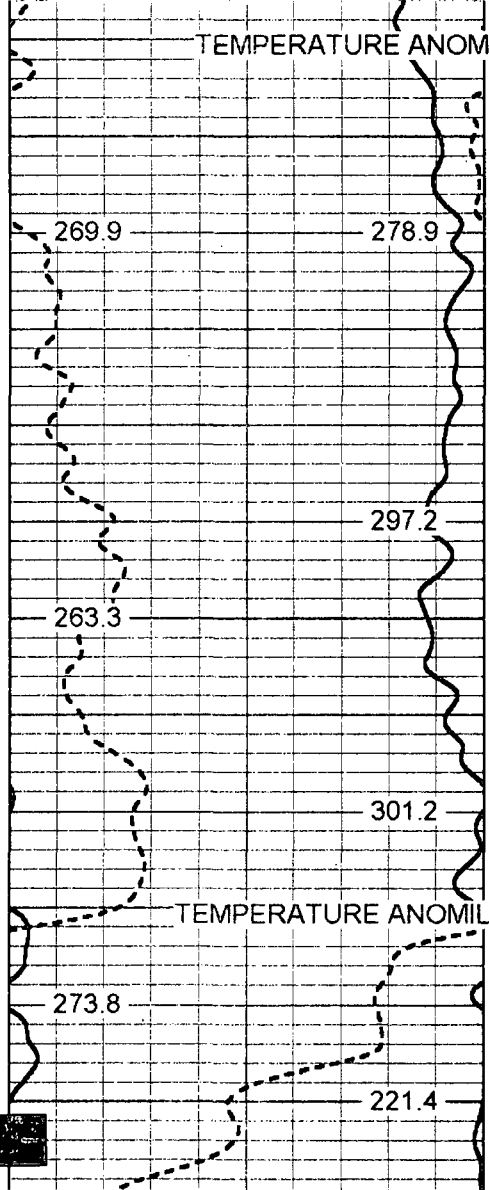
TEMPERATURE ANOMILIES DUE TO HIGH CONDUCTIVITY



3850

3900

TEMPERATURE ANOMILIES DUE TO HIGH CONDUCTIVITY

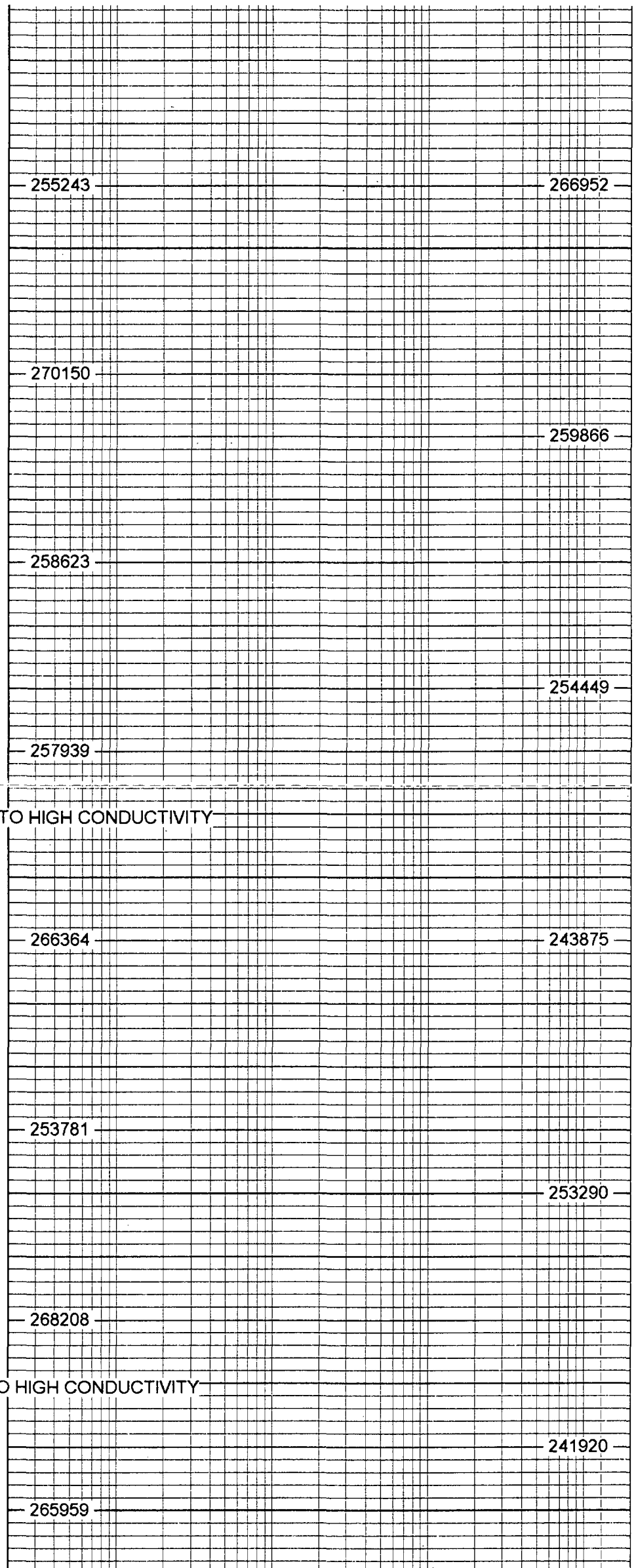


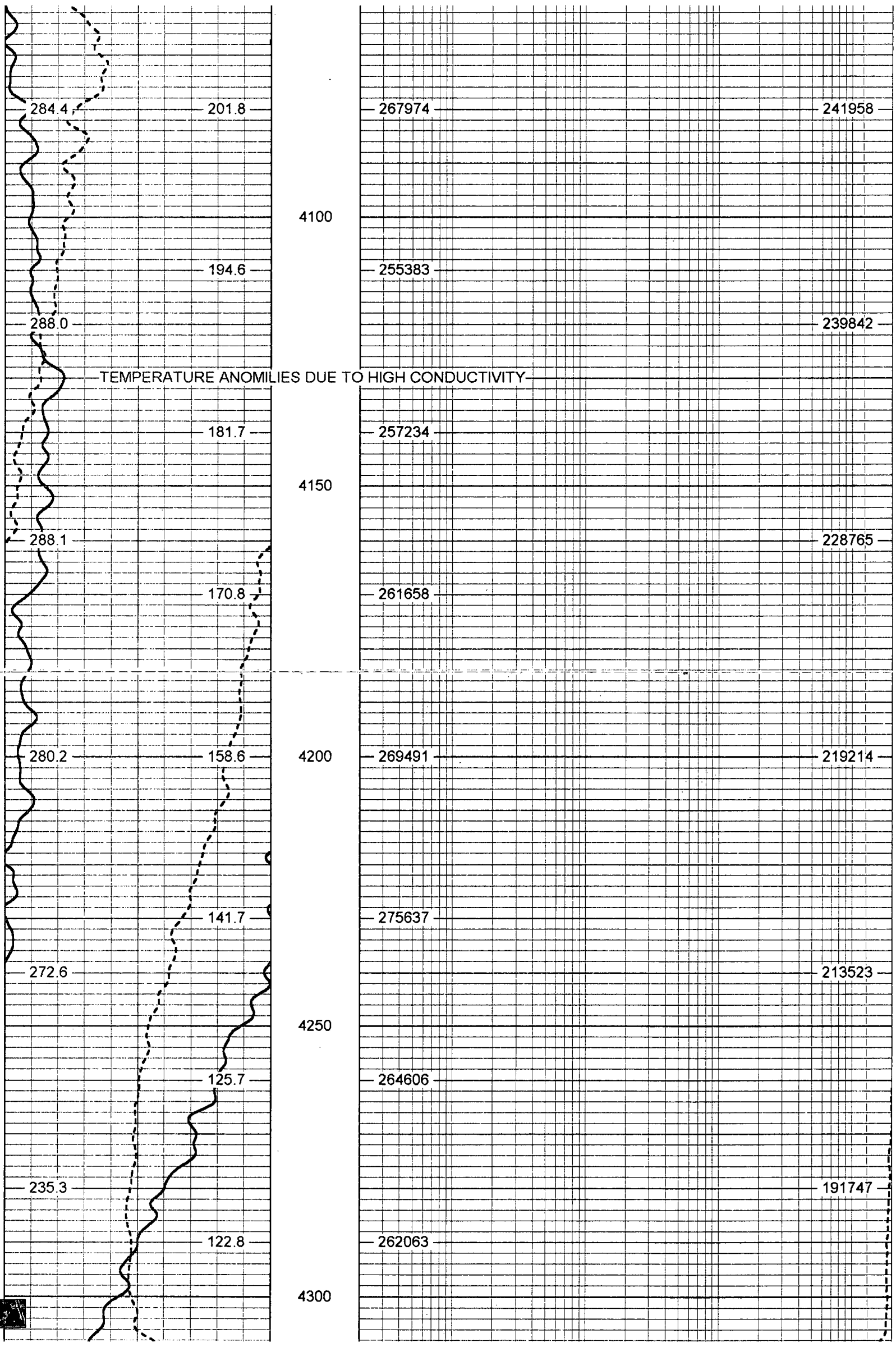
3950

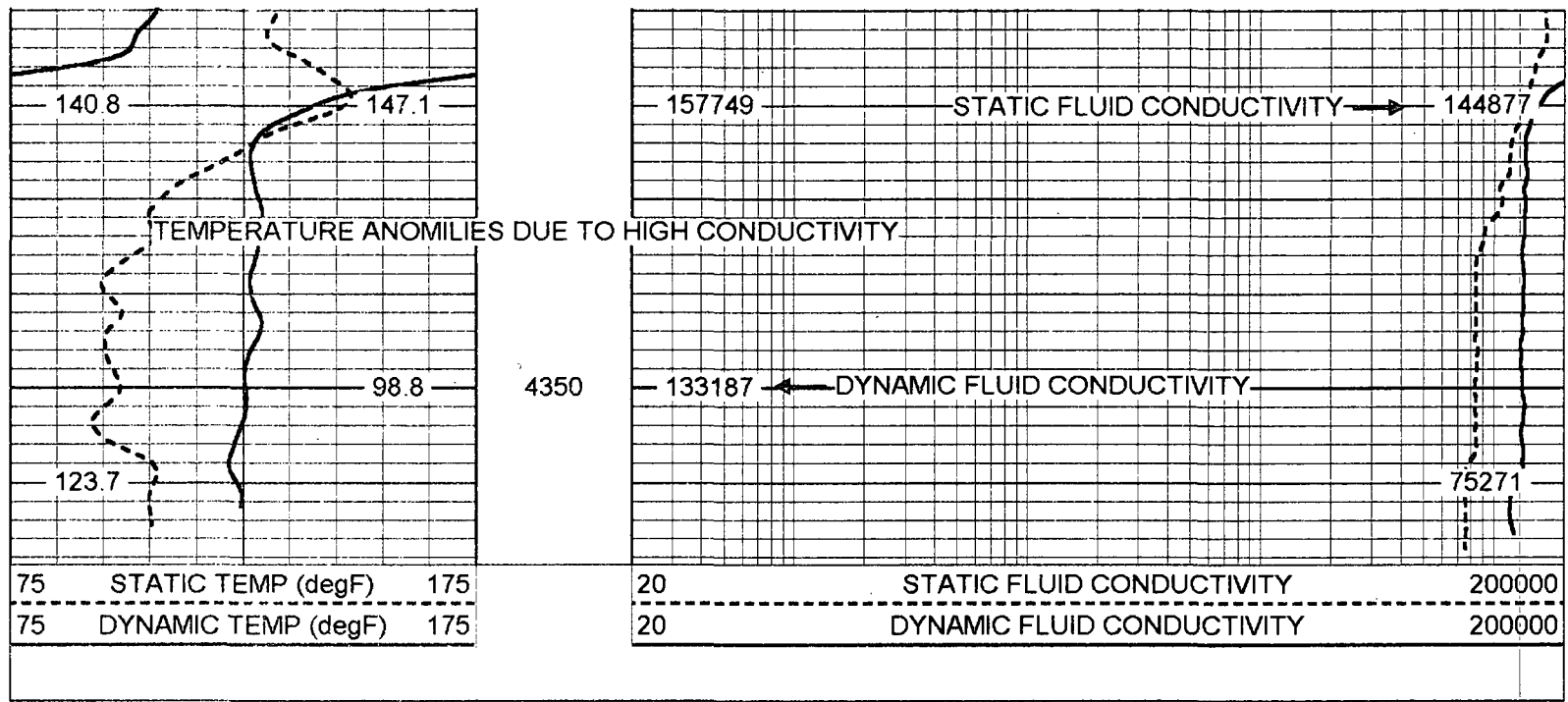
4000

TEMPERATURE ANOMILIES DUE TO HIGH CONDUCTIVITY

4050







Temperature Calibration Report					
		Serial Number:		31	
		Tool Model:		SONDEX	
		Performed:		Thu May 01 09:48:14 2008	
Point #	Reading		Reference		Reference
1	152.98	cps	39		degF
2	330.989	cps	82		degF
3	688.237	cps	157		degF
4		cps			degF
5		cps			degF
6		cps			degF
7		cps			degF
8		cps			degF
9		cps			degF
10		cps			degF

