



YOUNGQUIST BROTHERS, Inc
GEOPHYSICAL LOGGING DIVISION

FLUID CONDUCTIVITY TEMPERATURE LOG

Company CITY OF CAPE CORAL
Well IW-1
Field EVEREST W.R.F.
County LEE State FL

Location	Permanent Datum	Elevation	Other Services
	PAD	PAD	SEE COMMENTS
	Log Measured From	PAD	
	Drilling Measured From	PAD	

Date	Run Number	Depth Driller	Bottom Logged Interval	Top Log Interval	Open Hole Size	Type Fluid	Density / Viscosity	Max. Recorded Temp.	Estimated Cement Top	Time Well Ready	Time Logger on Bottom	Equipment Number	Location	Recorded By	Witnessed By
22-MAY-2008	FOUR	1700'	1701.5'	1701.5'	12.25"	WATER	N/A	N/A	N/A	0200	0230	103	FT MYERS	FULLER	M. KNAPP
													CATHEY	MAJEWSKI	

Run Number	Bit	From	To	Run No.	Bit	From	To
ONE	12.25"	CASING	490'				
TWO	50.5"	CASING	480'				
FOUR	12.25"	CASING	1700'				

Casing Record	Surface String	Prod. String	Production String	Line
Size	52"	42"		
Wd/ft	375	375 W.T.		
Top	SURFACE	SURFACE		
Bottom	80'	480'		

<<< Fold Here >>>

All interpretations are opinions based on inferences from electrical or other measurements and we cannot and do not guarantee the accuracy or correctness of any interpretation, and we shall not, except in the case of gross or willful negligence on our part, be liable or responsible for any loss, costs, damages, or expenses incurred or sustained by anyone resulting from any interpretation made by any of our officers, agents or employees. These interpretations are also subject to our general terms and conditions set out in our current Price Schedule.

Comments

Entered into
OCULUS
South District

X-Y CALIPER/GAMMA RAY
DUAL INDUCTION
BOREHOLE COMPENSATED SONIC
BHTV
FLOWMETER

DYNAMIC FLOWRATE = 200 GPM

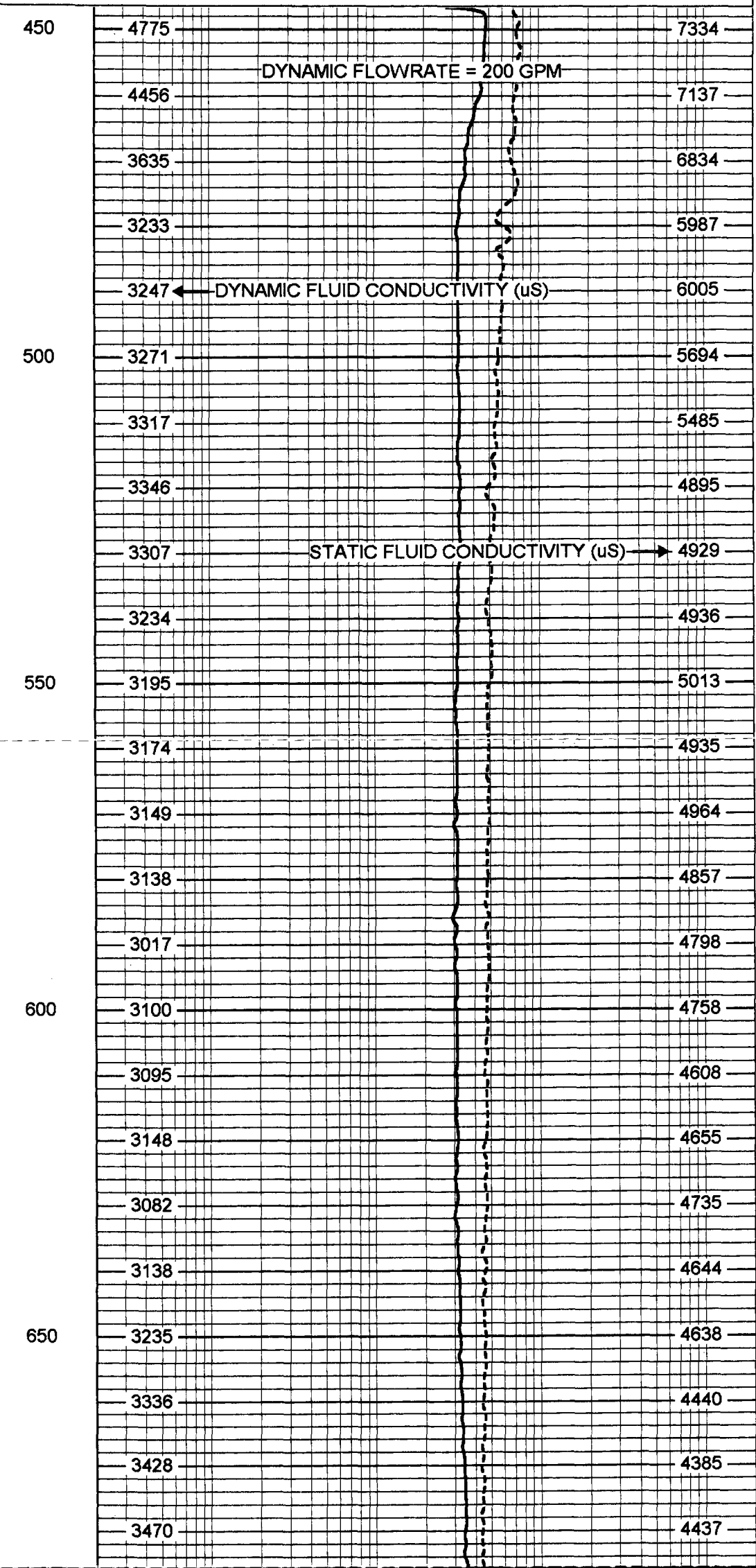
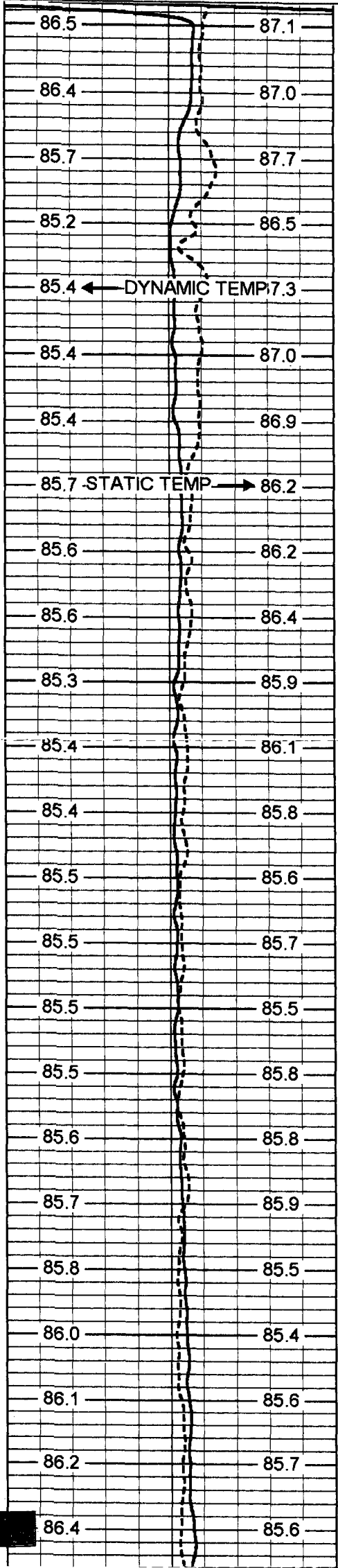
YOUNGQUIST BROTHERS, Inc
GEOPHYSICAL LOGGING DIVISION

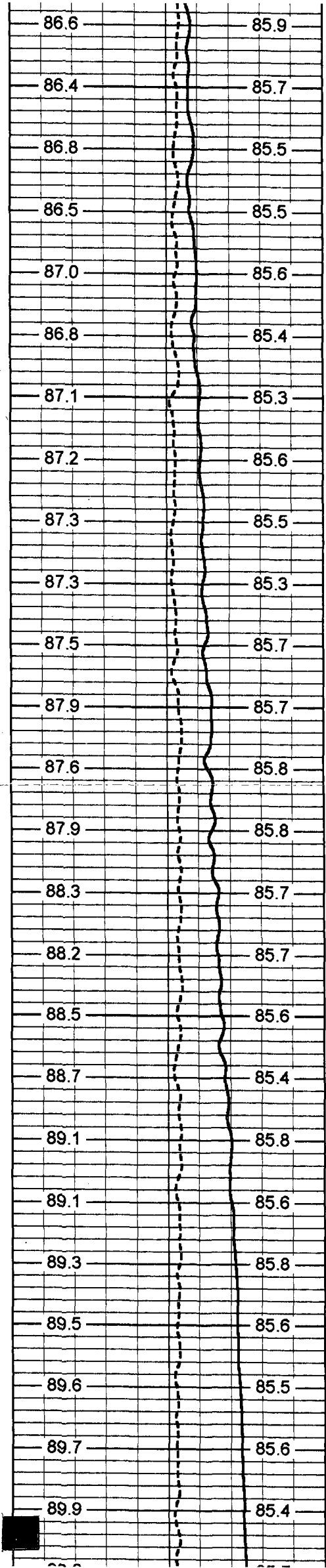
MERGED FCT

Database File: cceverst.db
Dataset Pathname: run4/pass12
Presentation Format: frt_mg
Dataset Creation: Thu May 22 16:20:25 2008 by Log 6.2_B4
Charted by: Depth in Feet scaled 1:240

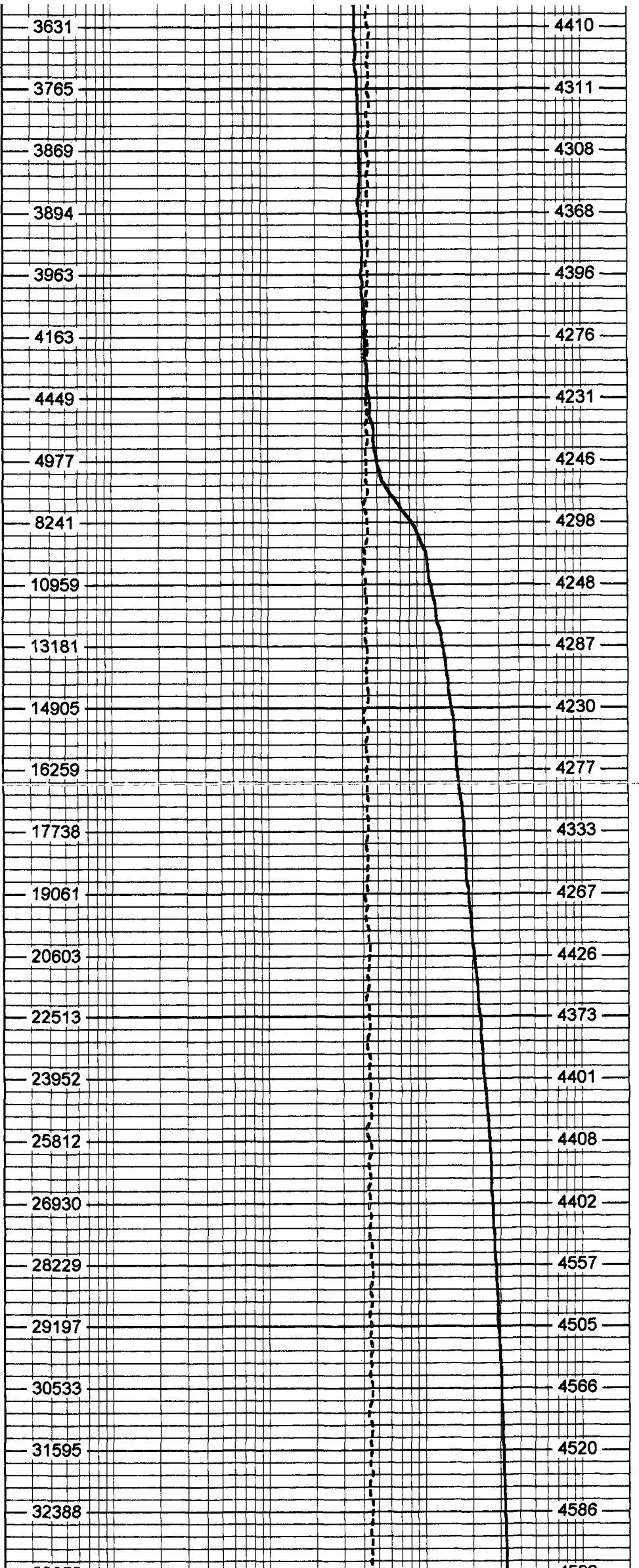
75 DYNAMIC TEMP (degF) 95
 75 STATIC TEMP (degF) 95

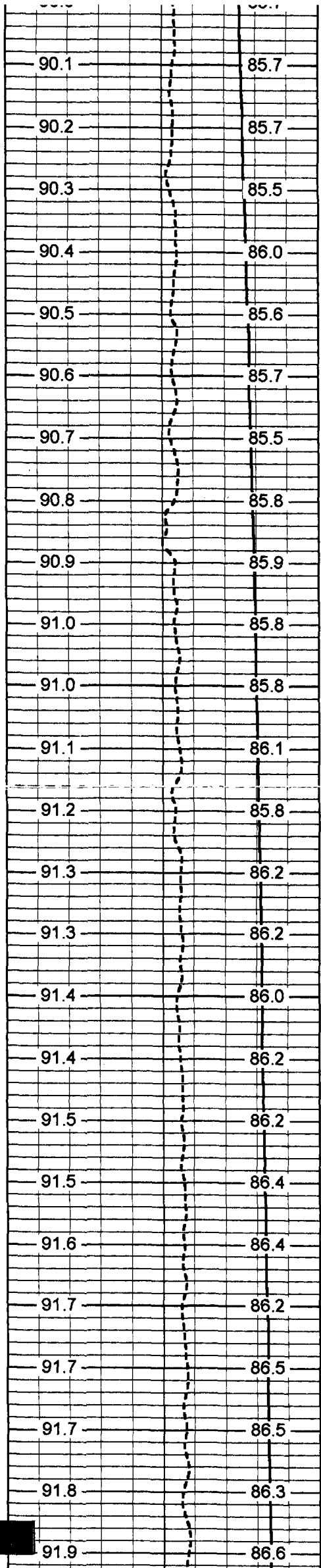
20 DYNAMIC FLUID CONDUCTIVITY (uS) 200000
 20 STATIC FLUID CONDUCTIVITY (uS) 200000



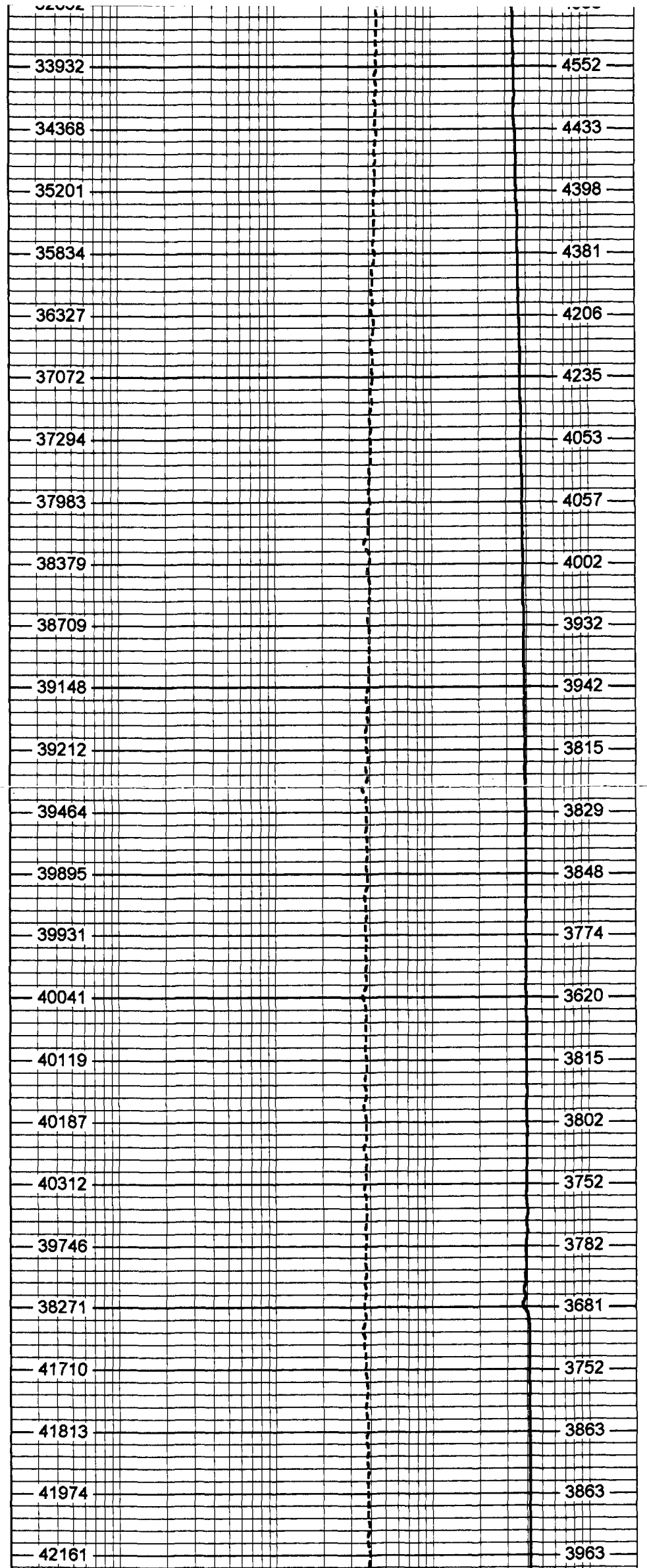


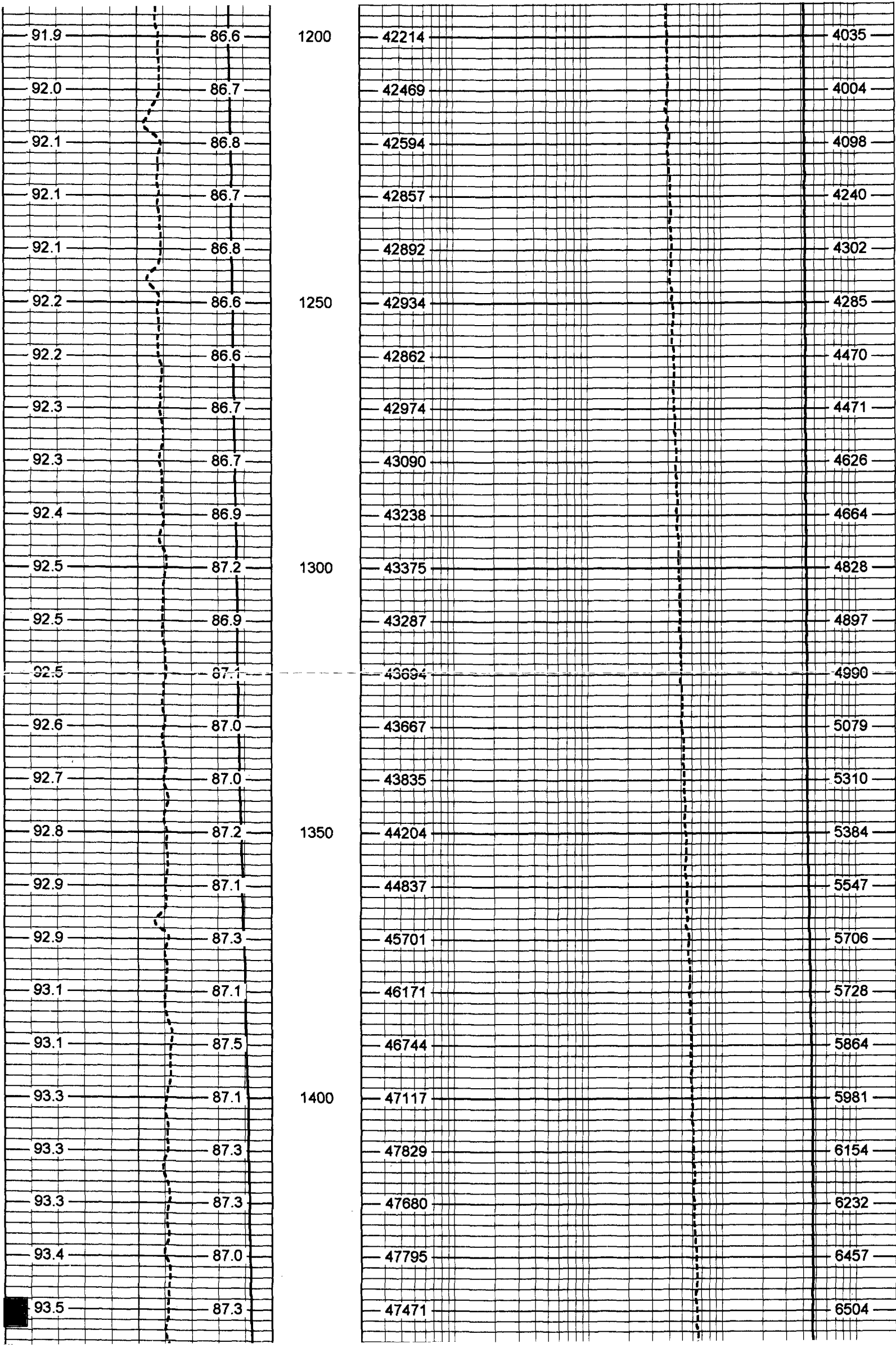
700
750
800
850
900

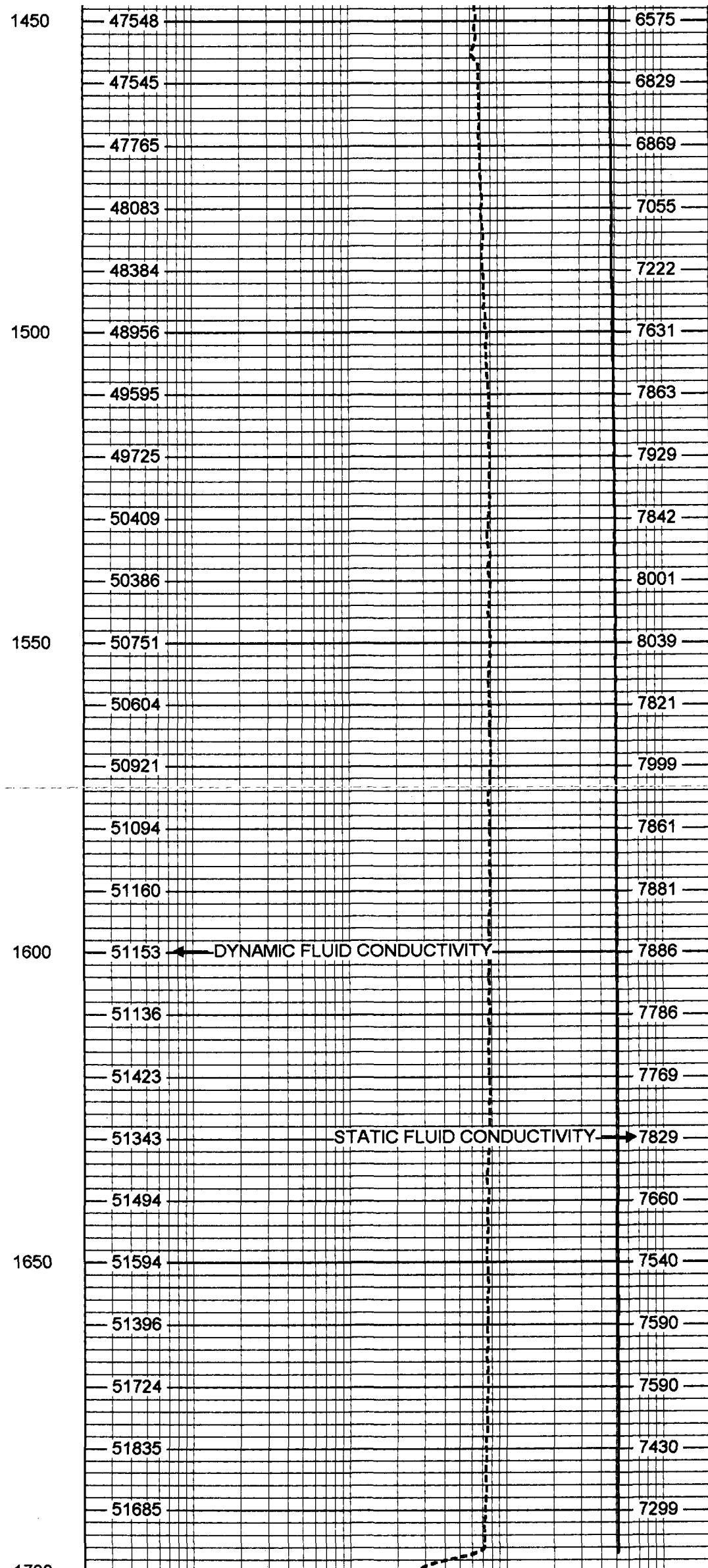
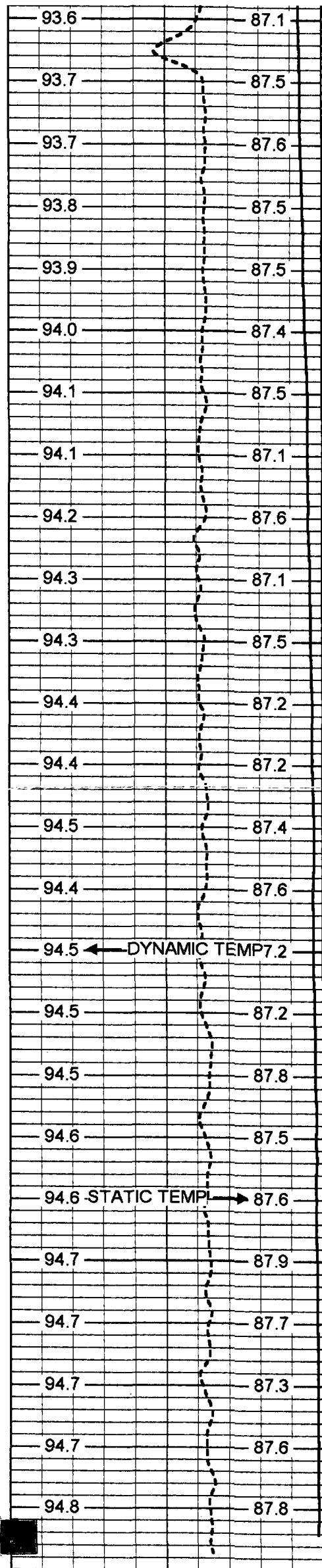




950
1000
1050
1100
1150







75	DYNAMIC TEMP (degF)	95
75	STATIC TEMP (degF)	95

20	DYNAMIC FLUID CONDUCTIVITY (uS)	200000
20	STATIC FLUID CONDUCTIVITY (uS)	200000

FRT Calibration Report

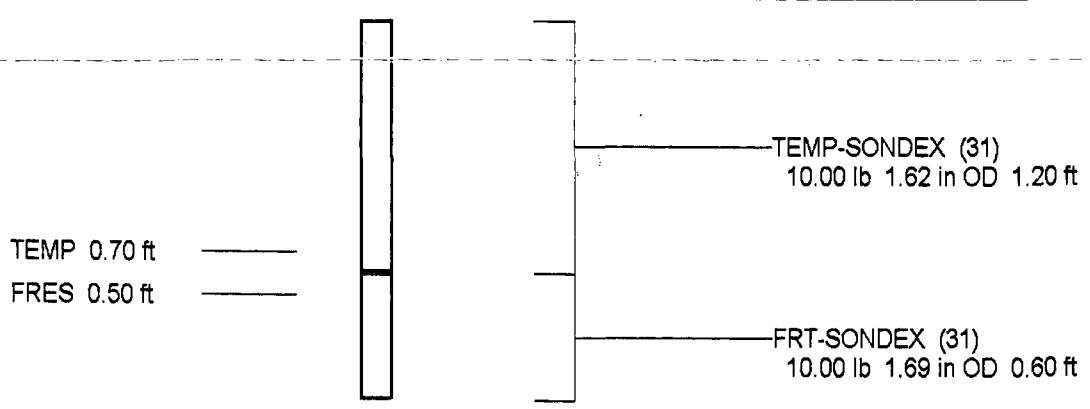
Serial Number: 31
 Tool Model: SONDEX
 Performed: Wed Apr 23 13:04:02 2008

Point #	Reading		Reference
1	31.164	cps	1000.000
2	167.193	cps	10000.000
3	415.824	cps	25000.000
4	918.476	cps	50000.000
5		cps	
6		cps	

Temperature Calibration Report

Serial Number: 31
 Tool Model: SONDEX
 Performed: Wed Apr 23 13:13:36 2008

Point #	Reading		Reference	
1	152.98	cps	39	degF
2	330.989	cps	82	degF
3	688.237	cps	157	degF



Dataset: run4/pass12
 Total Length: 1.80 ft
 Total Weight: 20.00 lb
 O.D.: 1.69 in