

**FLUID CONDUCTIVITY TEMPERATURE LOG**

Company CITY OF CAPE CORAL  
Well DZMW  
Field EVEREST W.R.F.  
County LEE  
State FL

Company CITY OF CAPE CORAL  
Well DZMW  
Field EVEREST W.R.F.  
County LEE  
State FL

Location

Permanent Datum PAD  
Log Measured From PAD  
Drilling Measured From PAD

Date JAN-09-2009

Run Number THREE  
Depth Driller 1660'  
Depth Logger 1660'  
Bottom Logged Interval 1660'  
Top Log Interval CASING  
Open Hole Size 12.25"  
Type Fluid WATER  
Density / Viscosity N/A  
Max. Recorded Temp. N/A  
Estimated Cement Top N/A  
Time Well Ready 1610  
Time Logger on Bottom 1630  
Equipment Number 103  
Location FT. MYERS  
Recorded By MOREY  
Witnessed By MAJEWSKI

Elevation PAD 9.39  
Elevation K.B. D.F. G.L.

Other Services

Borehole Record				Borehole Record			
Run Number	Bit	From	To	Run No.	Bit	From	To
ONE	12.25"	CASING	474'				
TWO	32.50"	CASING	473'				
THREE	12.25"	CASING	1660'				
Casing Record		Size	Wgt/Ft	Top		Bottom	
Surface String		34"	375	SURFACE		77'	
Prot. String		24"	.375 W.T.	SURFACE		470'	
Production String							
Liner							

<<< Fold Here >>>

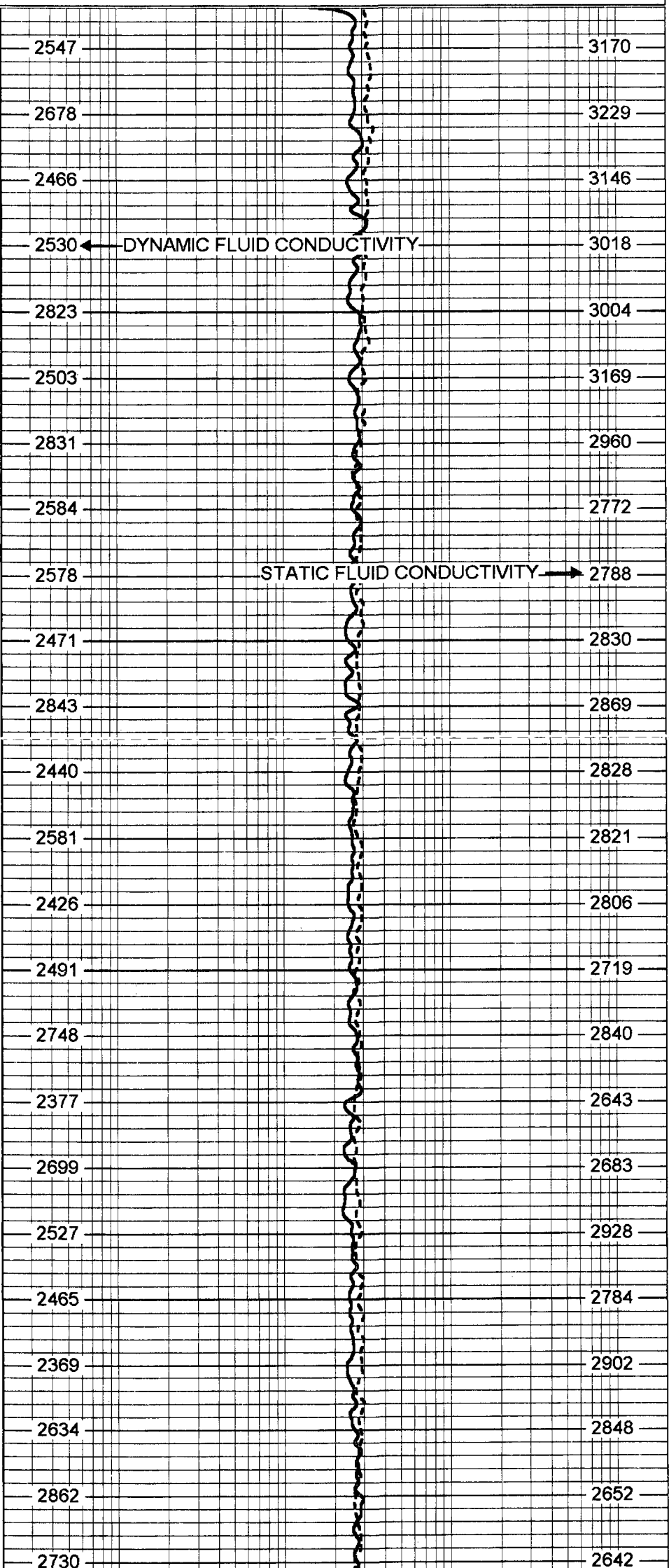
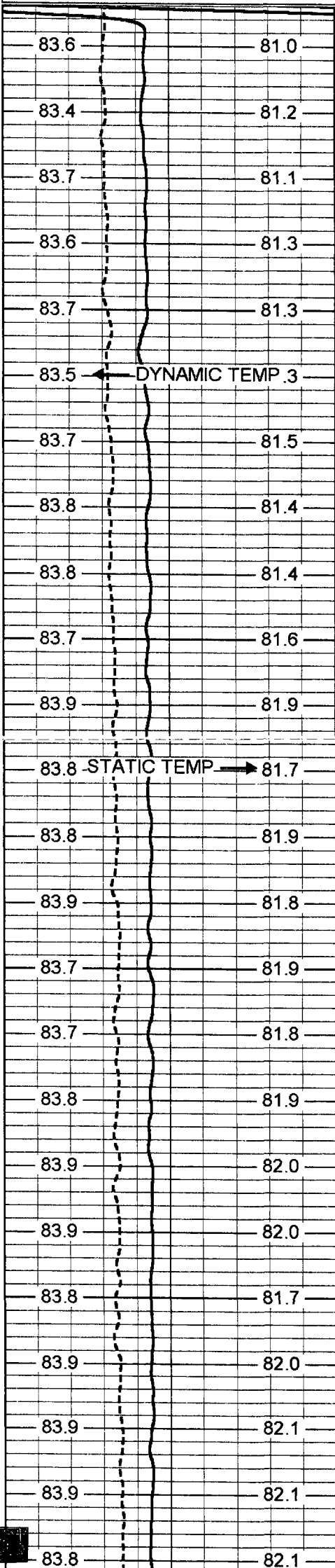
All interpretations are opinions based on inferences from electrical or other measurements and we cannot and do not guarantee the accuracy or correctness of any interpretation, and we shall not, except in the case of gross or willful negligence on our part, be liable or responsible for any loss, costs, damages, or expenses incurred or sustained by anyone resulting from any interpretation made by any of our officers, agents or employees. These interpretations are also subject to our general terms and conditions set out in our current Price Schedule.

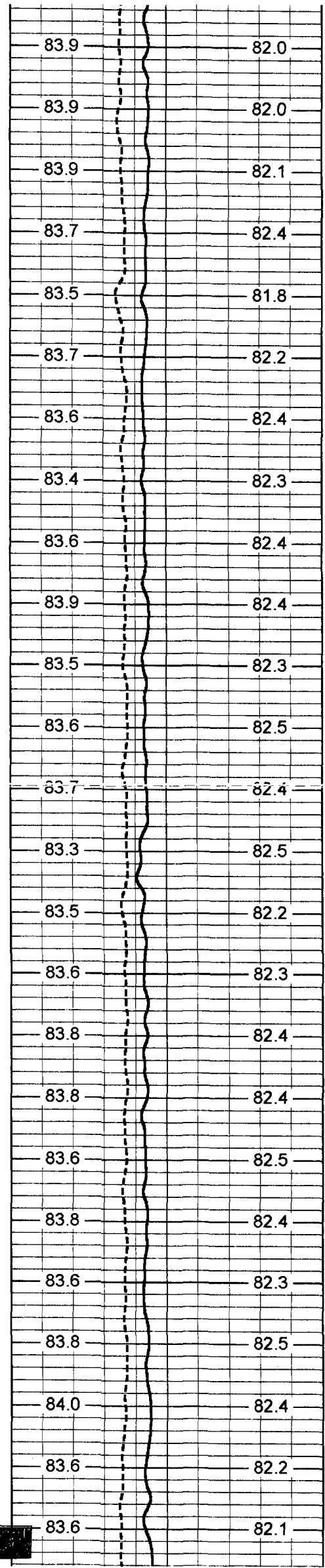
**Comments**

X-Y CALIPER/GAMMA RAY  
DUAL INDUCTION  
BOREHOLE COMPENSATED SONIC  
FLOWMETER  
BOREHOLE TELEVIEWER

75 DYNAMIC TEMP (degF) 95  
 75 STATIC TEMP (degF) 95

20 DYNAMIC FLUID CONDUCTIVITY (uS) 200000  
 20 STATIC FLUID CONDUCTIVITY (uS) 200000





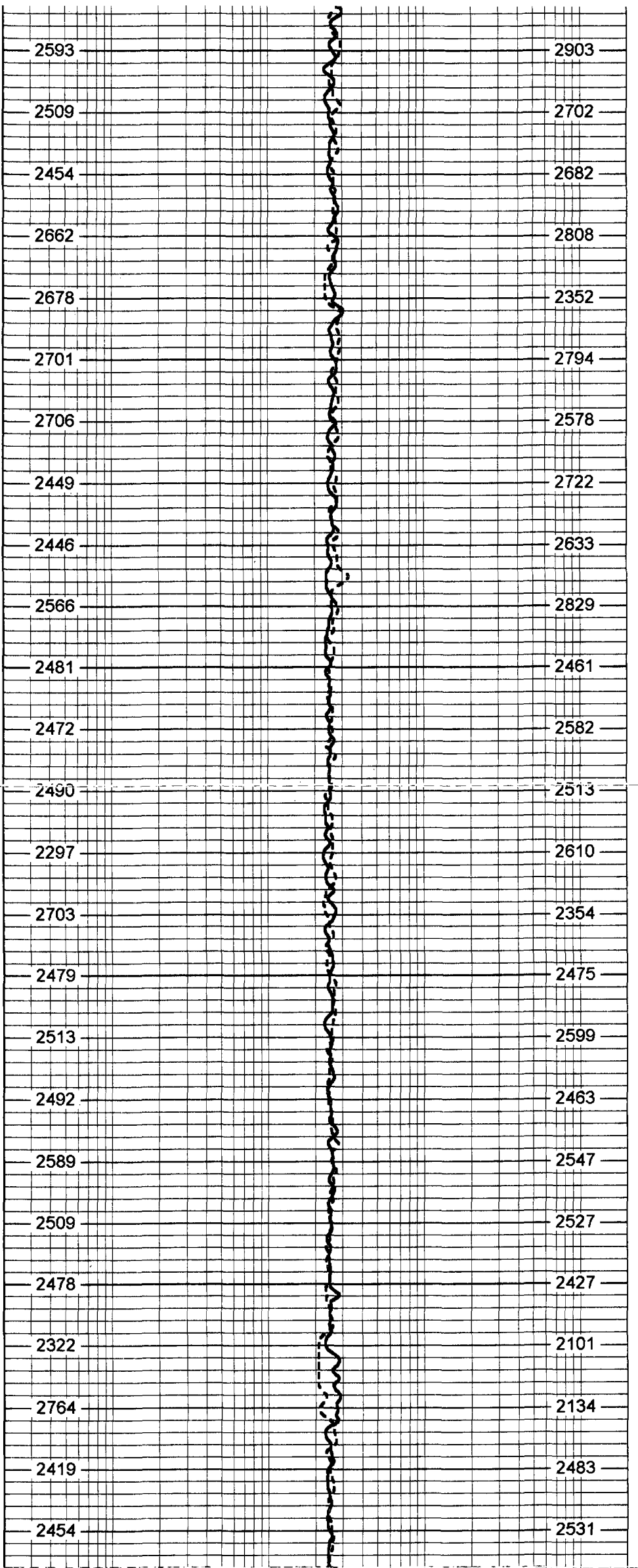
700

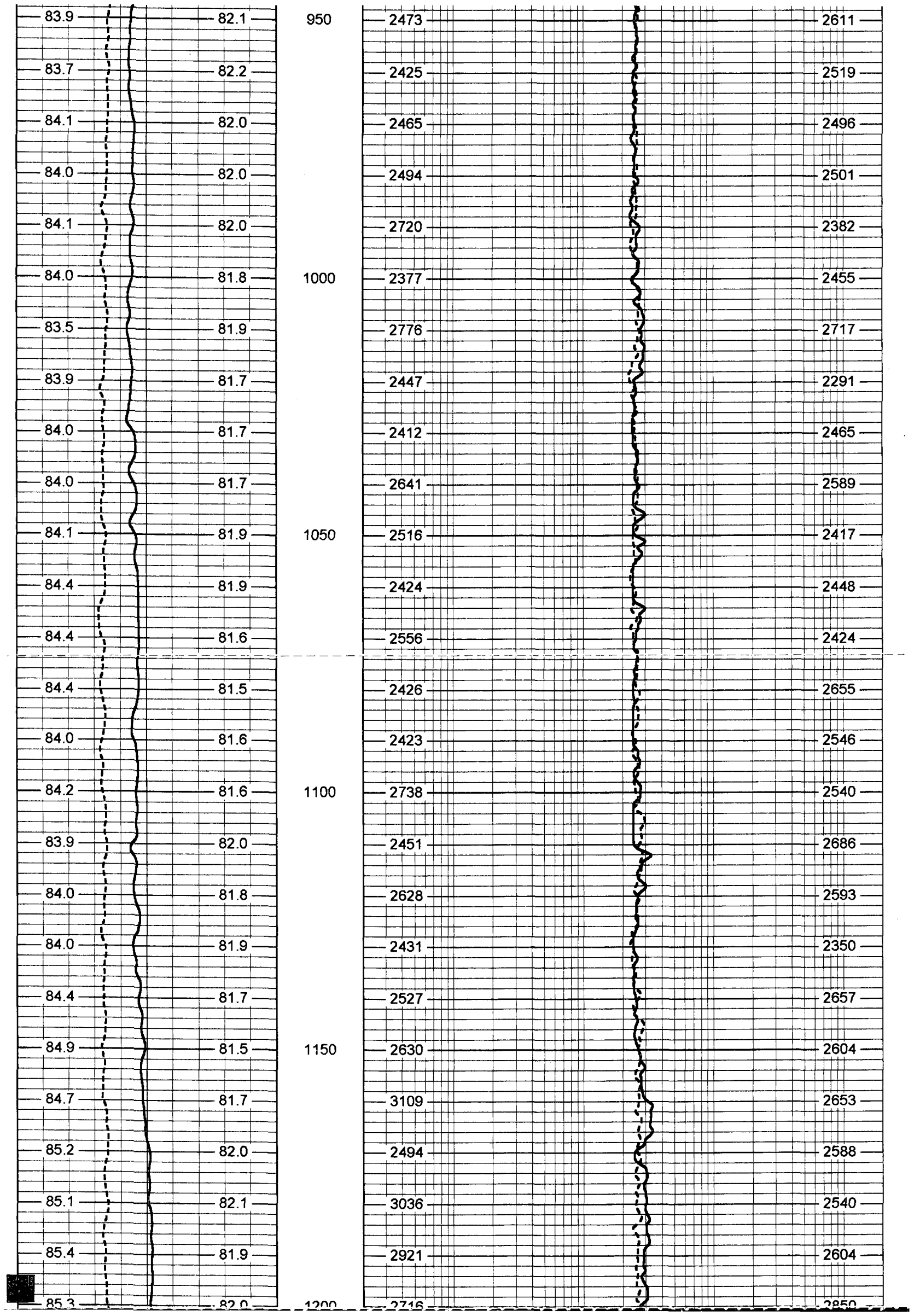
750

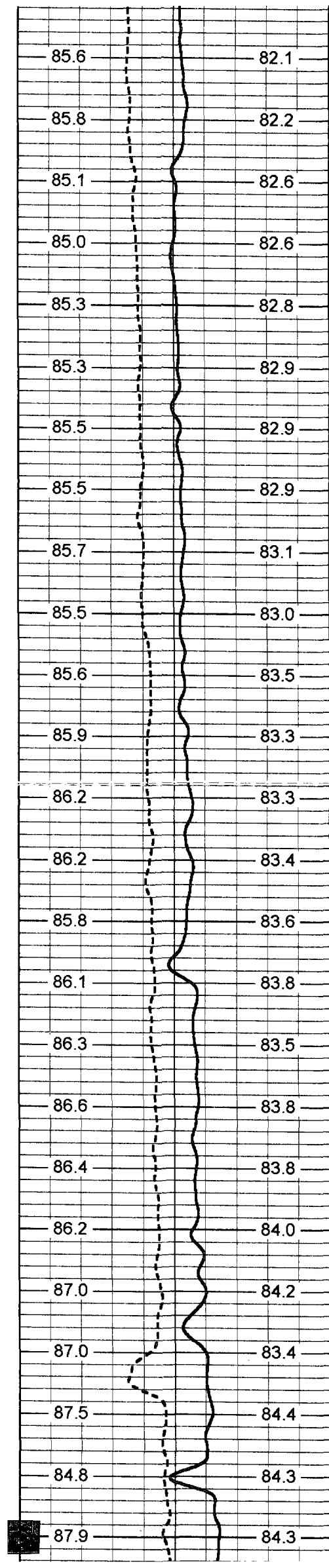
800

850

900







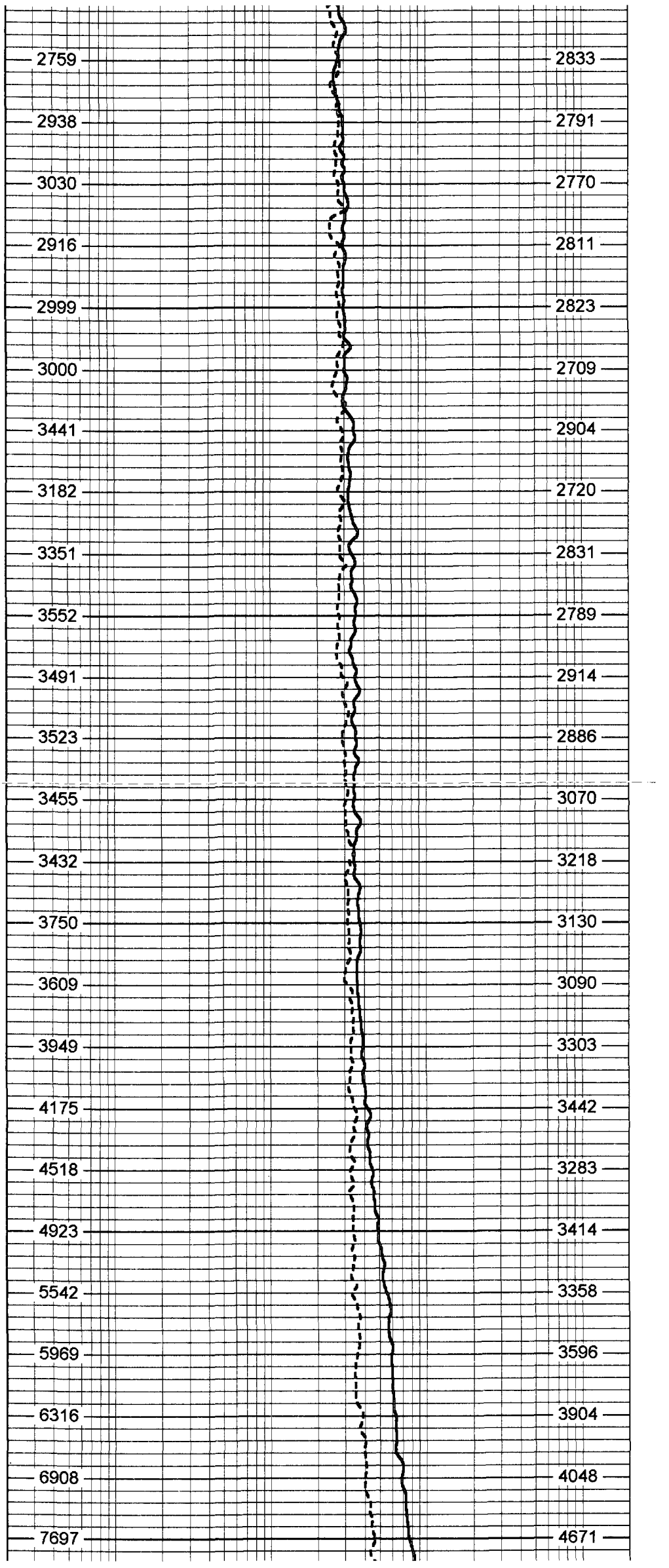
1250

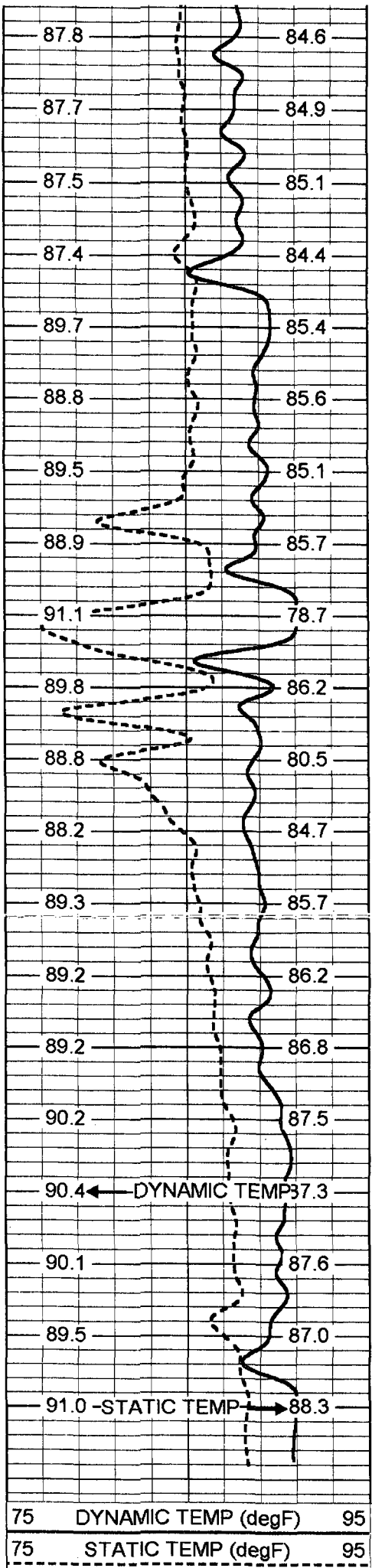
1300

1350

1400

1450



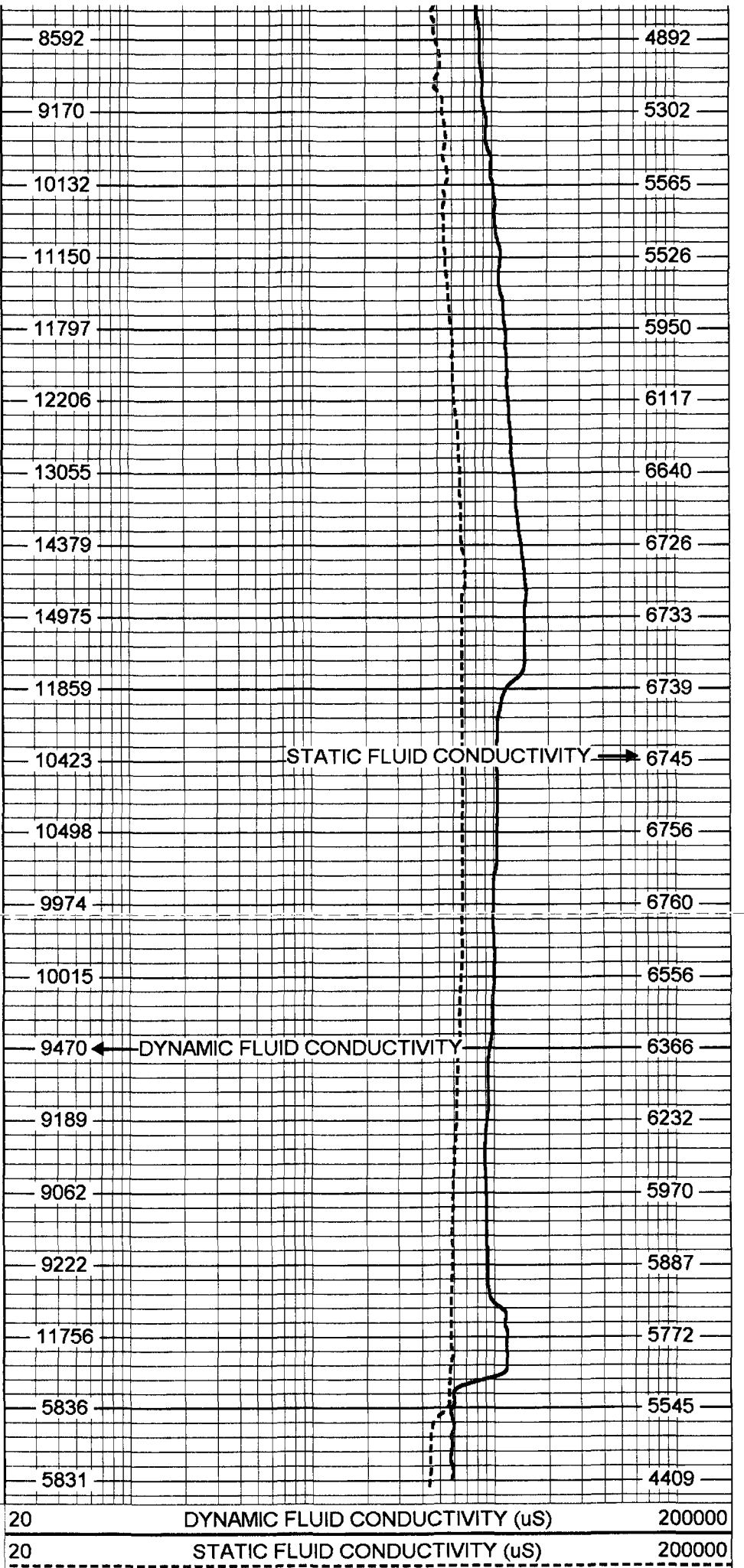


1500

1550

1600

1650



STATIC FLUID CONDUCTIVITY → 6745

← DYNAMIC FLUID CONDUCTIVITY 9470

TEMP 0.70 ft

FRES 0.50 ft



FRT-SONDEX (31)  
10.00 lb 1.69 in OD 0.60 ft

Dataset: run3/pass13  
 Total Length: 1.80 ft  
 Total Weight: 20.00 lb  
 O.D. 1.69 in

### FRT Calibration Report

Serial Number: 31  
 Tool Model: SONDEX  
 Performed: Mon Jun 09 10:53:41 2008

Point #	Reading		Reference
1	31.165	cps	1000.000
2	167.193	cps	10000.000
3	415.824	cps	25000.000
4	918.476	cps	50000.000
5		cps	
6		cps	

### Temperature Calibration Report

Serial Number: 31  
 Tool Model: SONDEX  
 Performed: Mon Jun 09 10:53:33 2008

Point #	Reading		Reference	
1	152.99	cps	39	degF
2	330.989	cps	82	degF
3	688.237	cps	157	degF