



YOUNGQUIST BROTHERS, Inc
GEOPHYSICAL LOGGING DIVISION

FLUID CONDUCTIVITY TEMPERATURE LOG

Company TOWN OF DAVIE/AECOM
Well IW-1
Field DAVIE
County BROWARD State FL

Location: TOWN OF DAVIE WWTP
API #: TOWN OF DAVIE WWTP
LAT 26 05 10.78 N
LON 80 14 37.96 W
SEC 22 TWP 50S RGE 41E
Permanent Datum Ground Level Elevation 6.2' NGVD
Log Measured From G.L.
Drilling Measured From G.L.

Company TOWN OF DAVIE/AECOM
Well IW-1
Field DAVIE
County BROWARD
State FL

Other Services
SEE COMMENTS
Elevation
R.B. 492.2'
D.F. 10.2'
G.L. 6.2' NGVD, 29'

Date	2-APR-2011		
Run Number	SEVEN		
Depth Driller	3008'		
Depth Logger	3812'		
Bottom Logged Interval	3812'		
Top Log Interval	CASING		
Open Hole Size	12.25"		
Type Fluid	WATER		
Density / Viscosity	NA		
Max. Recorded Temp.	NA		
Estimated Cement Top	NA		
Time Well Ready	2000		
Time Logger on Bottom	2200		
Equipment Number	103		
Location	FT MYERS		
Recorded By	MOREY		
Witnessed By	J PRITCHETT		
Borehole Record		Borehole Record	
Run Number	Bit	From	To
ONE	SURFACE	254'	3008'
TWO	SURFACE	980'	
THREE	CASING	2100'	
FIVE	CASING	1979'	
Casing Record	Size	Wgt/Ft	Bottom
Surface String	60"	.375" W.T.	250'
Prot. String	50"	.375" W.T.	975'
Production String	40"	.375" W.T.	1975'
Liner			

<<< Fold Here >>>

All interpretations are opinions based on inferences from electrical or other measurements and we cannot and do not guarantee the accuracy or correctness of any interpretation, and we shall not, except in the case of gross or willful negligence on our part, be liable or responsible for any loss, costs, damages, or expenses incurred or sustained by anyone resulting from any interpretation made by any of our officers, agents or employees. These interpretations are also subject to our general terms and conditions set out in our current Price Schedule.

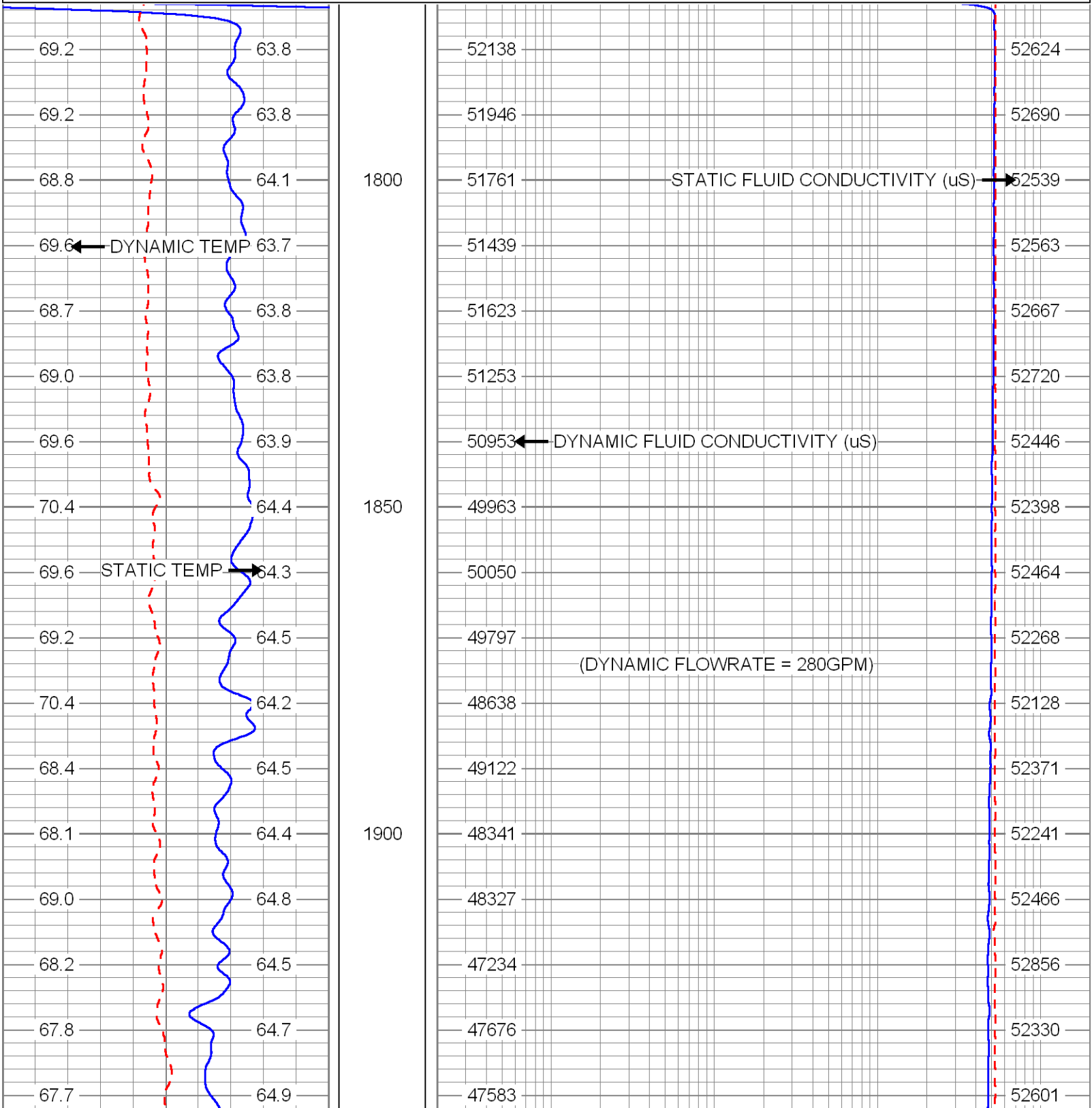
Comments

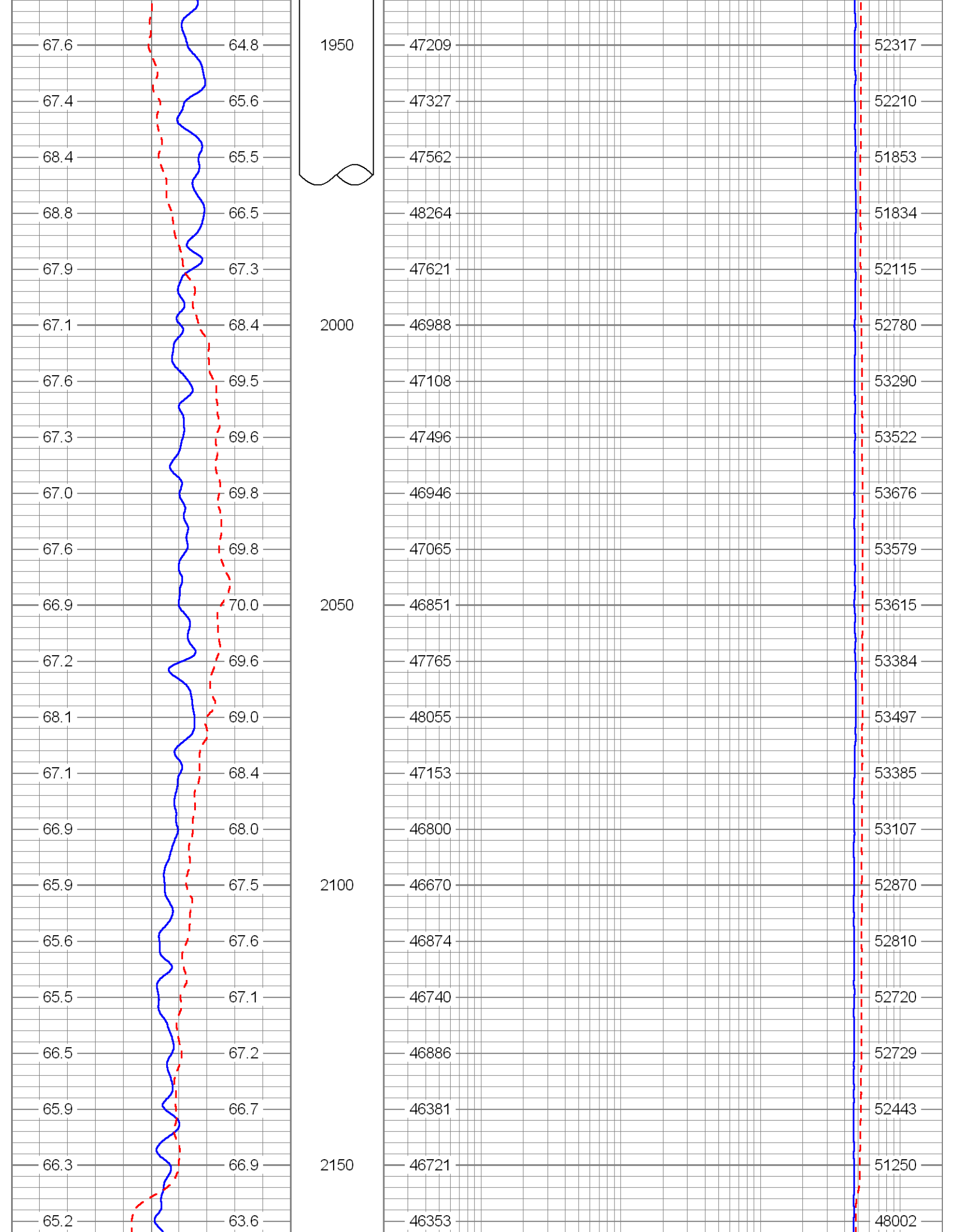
FLOWMETER
DUAL INDUCTION
SONIC
VIDEO
XY CALIPER / GAMMA RAY

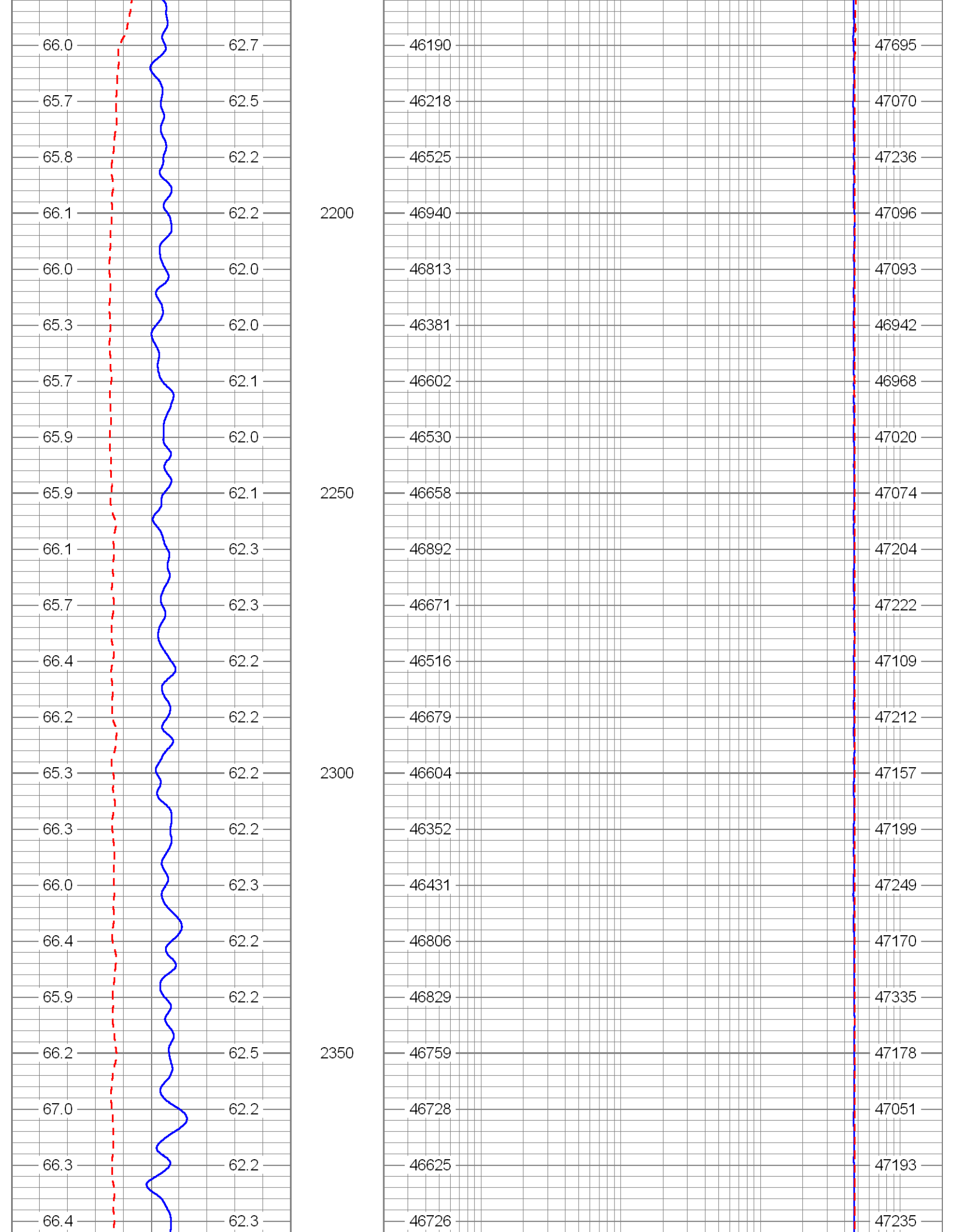
DYNAMIC FLOWRATE = 280 GPM

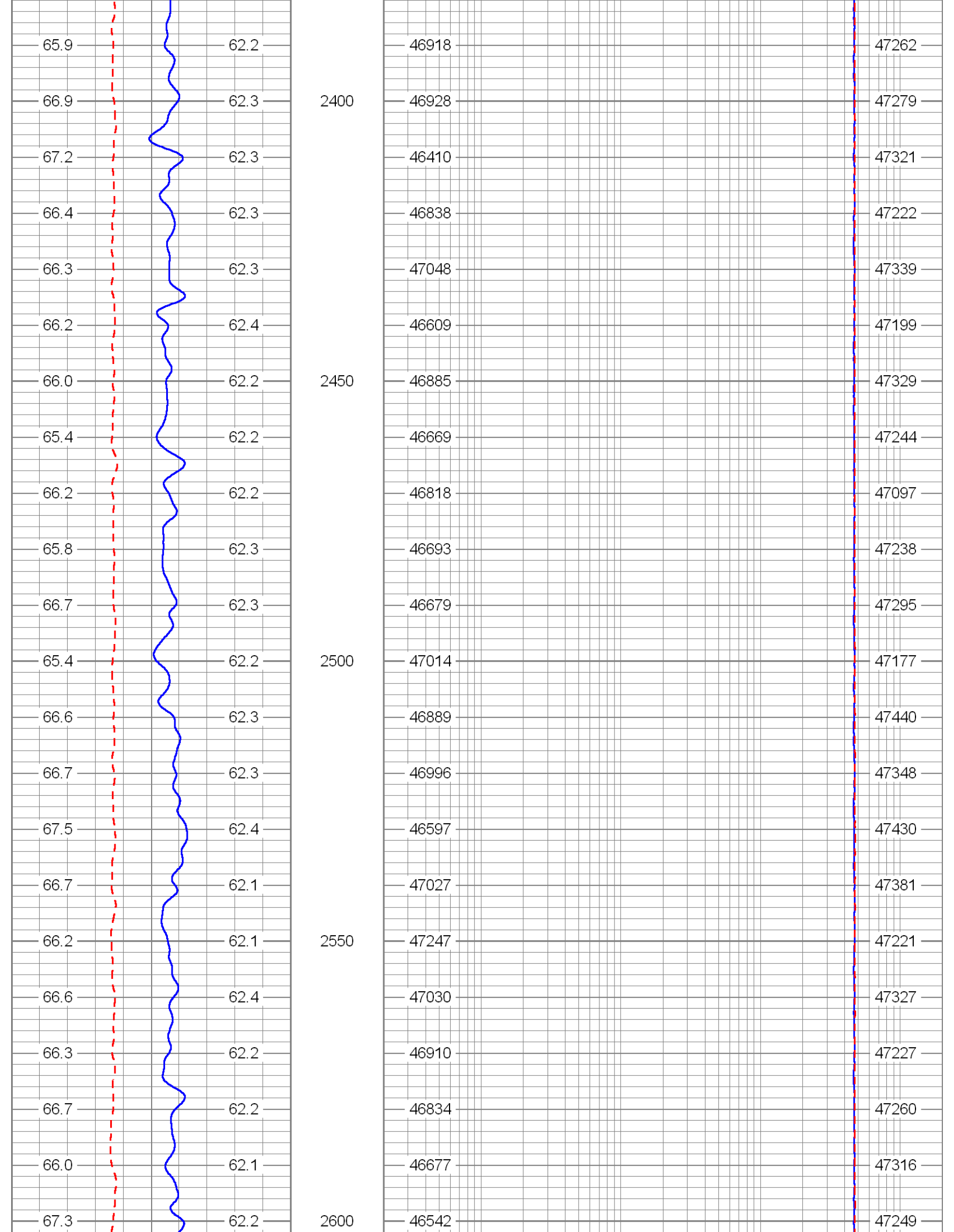
Database File: daview1.db
 Dataset Pathname: run7/pass22
 Presentation Format: fit_mg
 Dataset Creation: Sat Apr 02 09:37:41 2011 by Log Open-Cased 100827
 Charted by: Depth in Feet scaled 1:240

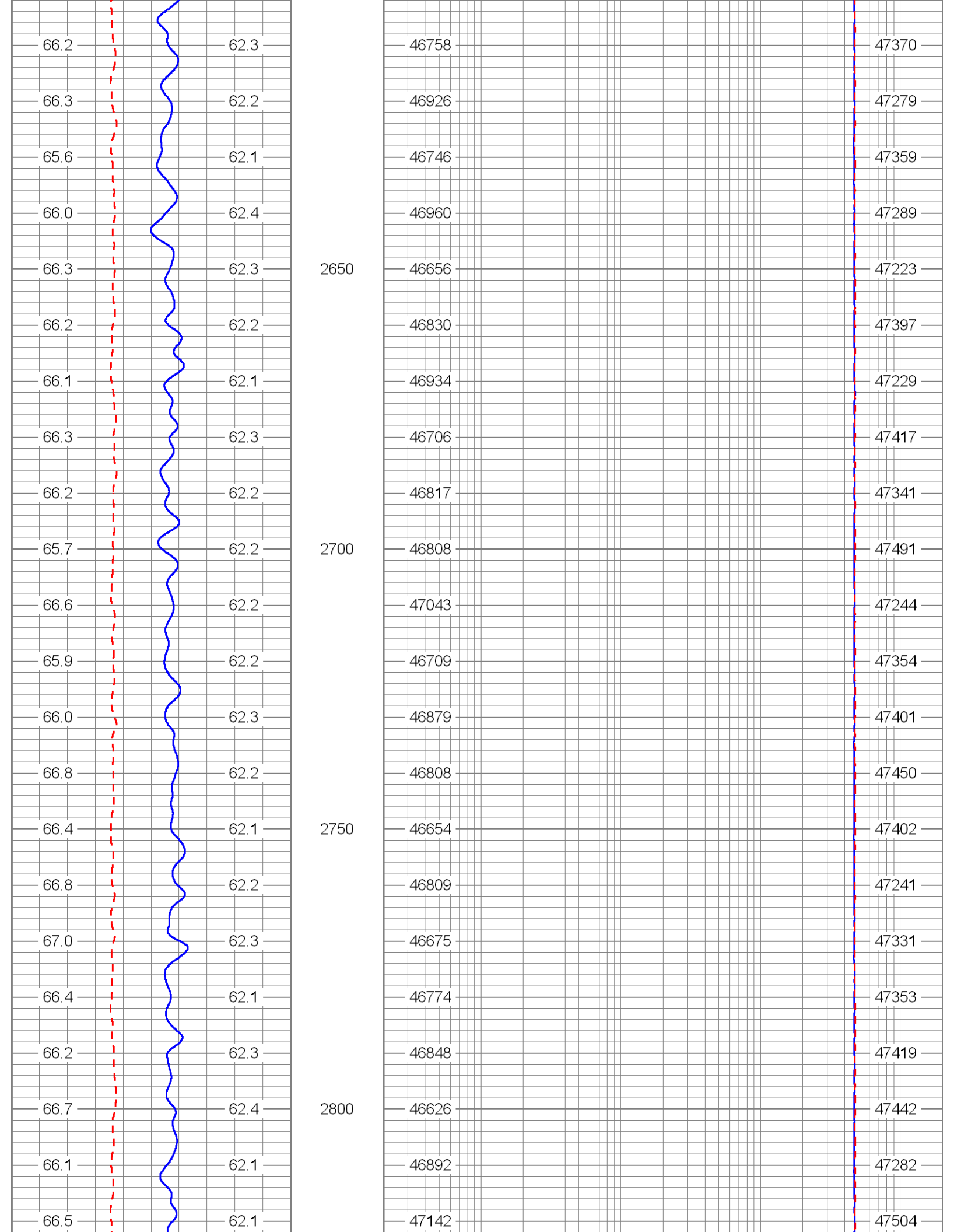
75	DYNAMIC TEMP (degF)	95	20	DYNAMIC FLUID CONDUCTIVITY (uS) (uS/cm)	200000
75	STATIC TEMP (degF)	95	20	STATIC FLUID CONDUCTIVITY (uS) (uS/cm)	200000
DYNAMIC TEM (degF)		STATIC TEMP (degF)		FLUID COND (uS/cm)	
				STATIC FLUID CONDUCTIVITY (uS/cm)	

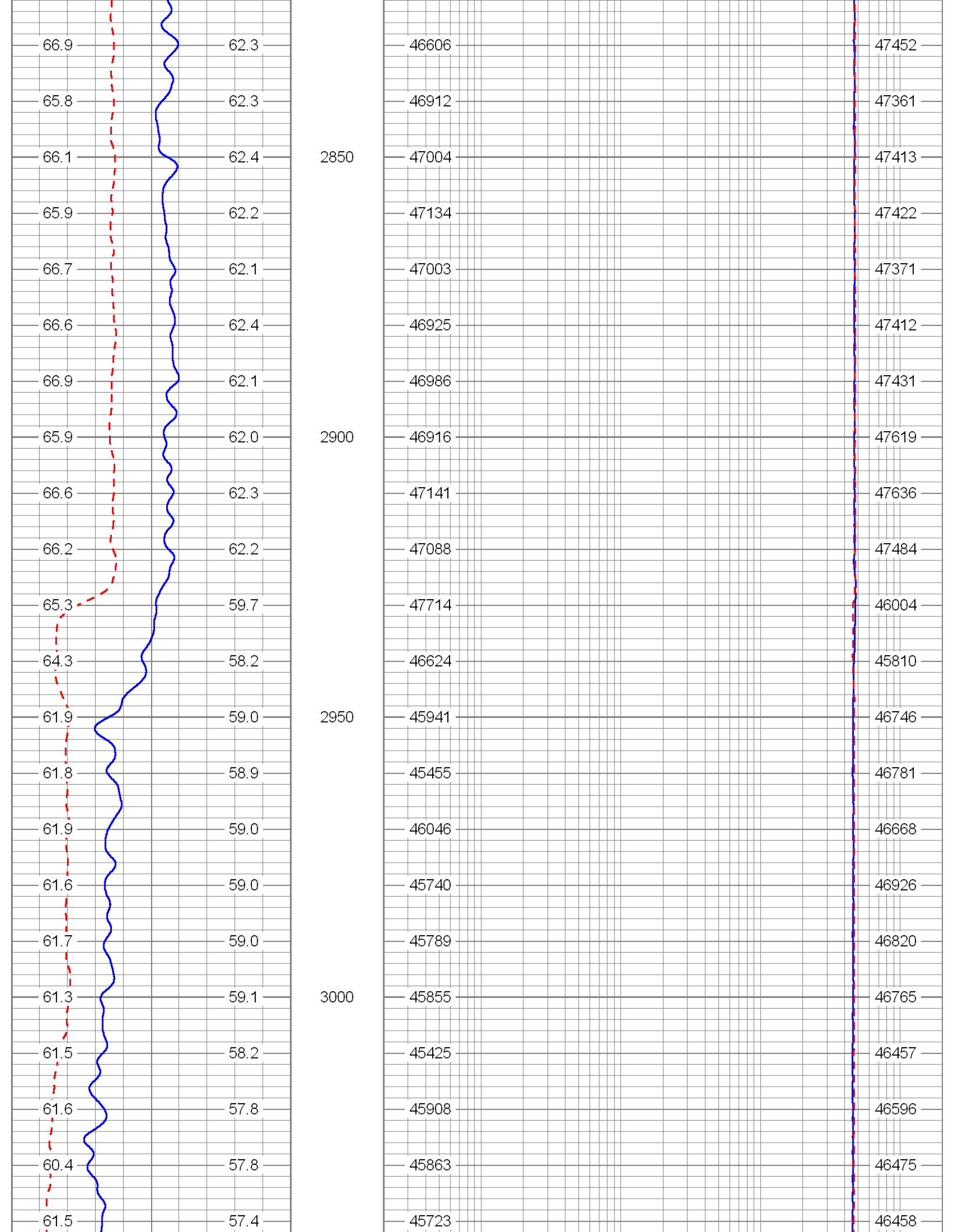


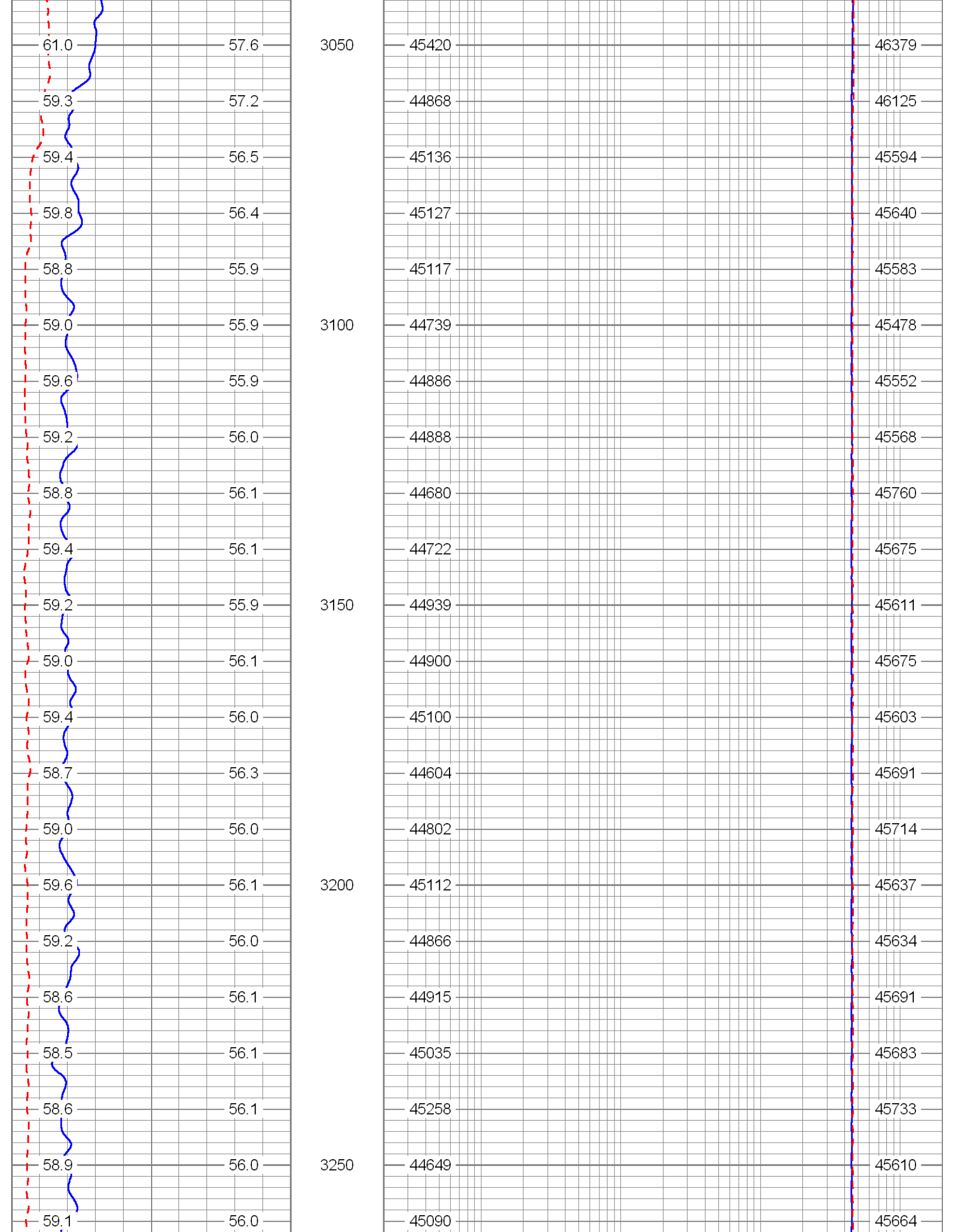


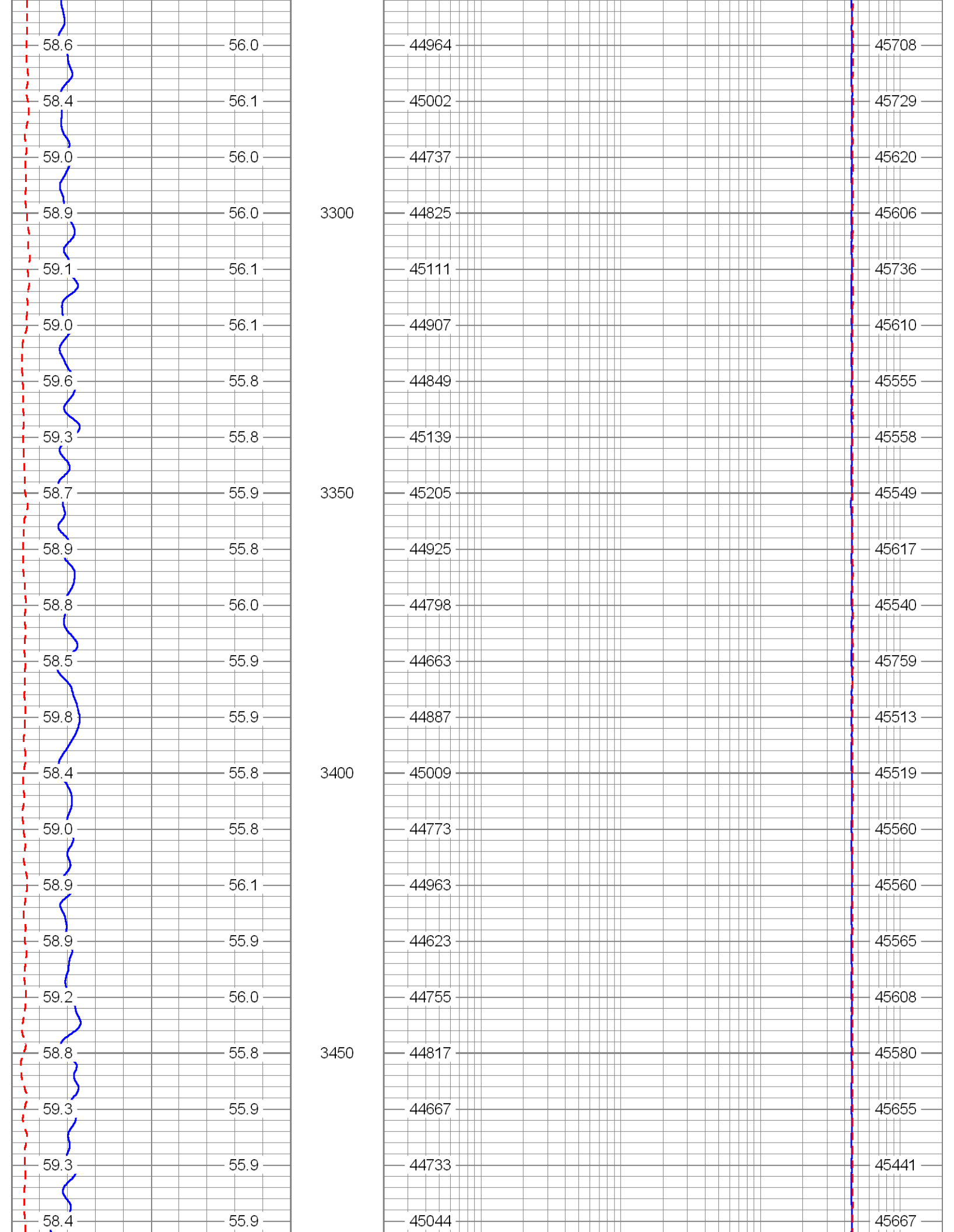


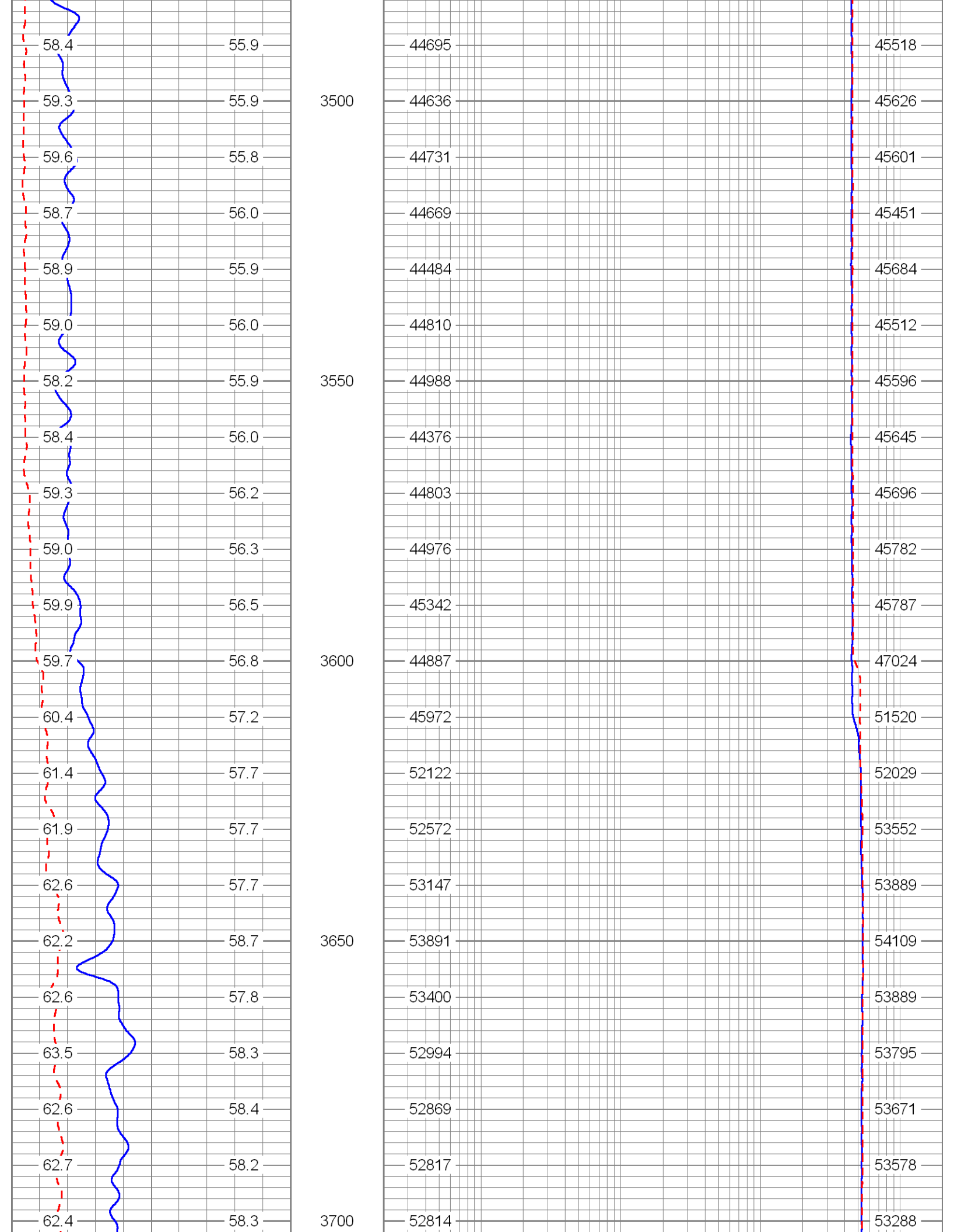


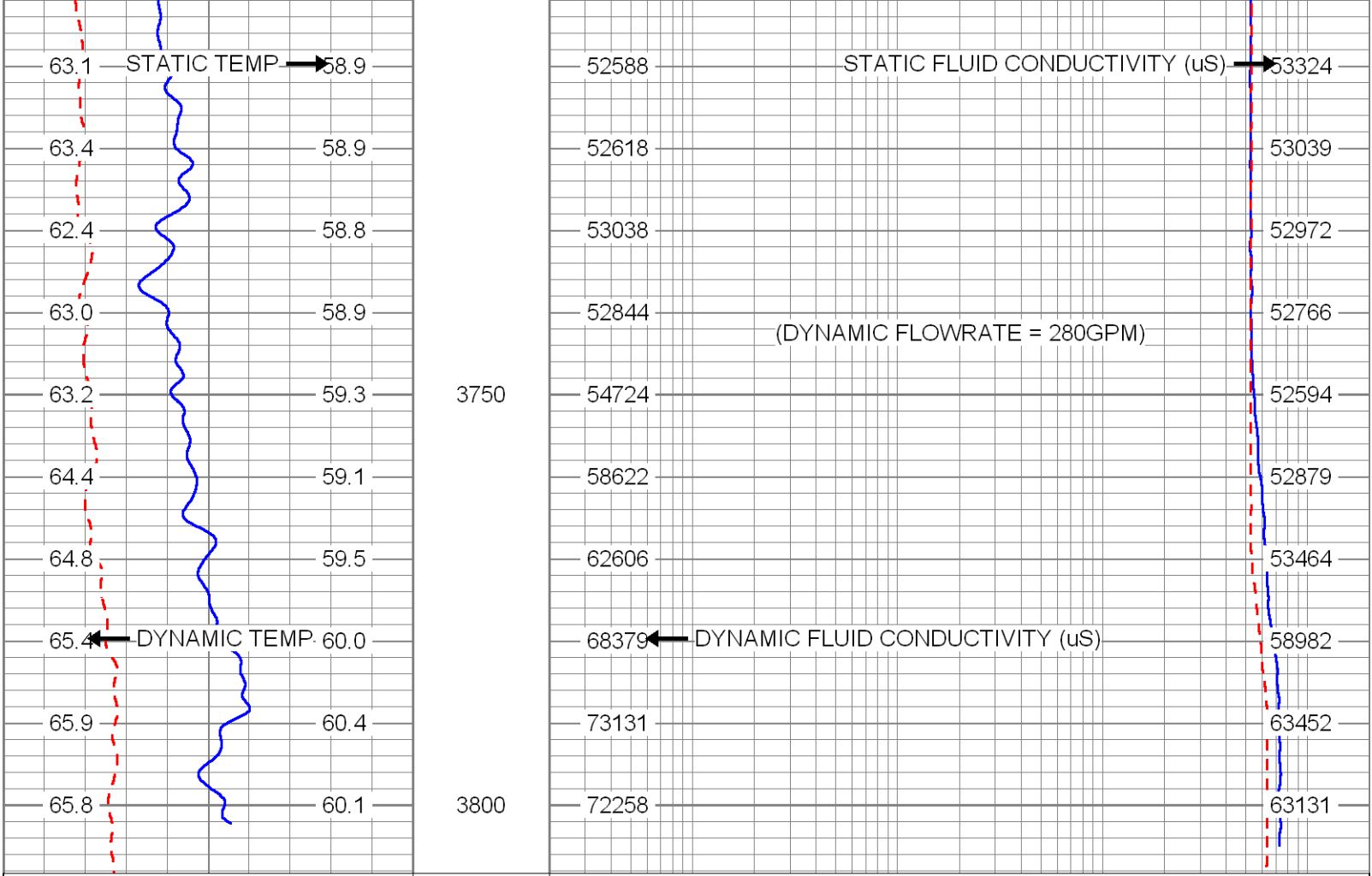












75	DYNAMIC TEMP (degF)	95	20	DYNAMIC FLUID CONDUCTIVITY (uS) (uS/cm)	200000
75	STATIC TEMP (degF)	95	20	STATIC FLUID CONDUCTIVITY (uS) (uS/cm)	200000
DYNAMIC TEM (degF)		STATIC TEMF (degF)		FLUID COND (uS/cm)	
				STATIC FLUID ONDUCTIVIT (uS/cm)	

Calibration Report

Database File: daview1.db
 Dataset Pathname: run7/pass22
 Dataset Creation: Sat Apr 02 09:37:41 2011 by Log Open-Cased 100827

FRT Calibration Report

Serial Number: 31
 Tool Model: SONDEX
 Performed: Wed Mar 23 10:56:26 2011

Point #	Reading		Reference	
1	1.576	cps	1009.000	uS/cm
2	198.844	cps	10500.000	uS/cm
3	463.144	cps	25100.000	uS/cm
4	996.881	cps	50500.000	uS/cm
5		cps		uS/cm
6		cps		uS/cm
7		cps		uS/cm
8		cps		uS/cm
9		cps		uS/cm
10		cps		uS/cm

Serial Number:
 Tool Model:
 Performed:

31
 SONDEX
 Wed Mar 23 11:09:51 2011

Point #	Reading	Reference
1	124.64 cps	31.00 degF
2	327.04 cps	79.00 degF
3	985.65 cps	212.00 degF
4	cps	degF
5	cps	degF
6	cps	degF
7	cps	degF
8	cps	degF
9	cps	degF
10	cps	degF

Sensor	Offset (ft)	Schematic	Description	Len (ft)	OD (in)	Wt (lb)
TEMP	0.70		TEMP-SONDEX (31)	1.20	1.63	10.00
FRES	0.50		FRT-SONDEX (31)	0.60	1.69	10.00

Dataset: daview1.db: field/well/run7/pass22
 Total Length: 1.80 ft
 Total Weight: 20.00 lb
 O.D. 1.69 in