

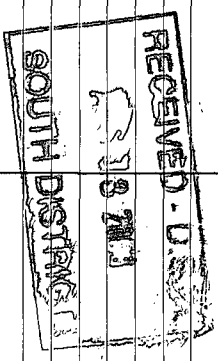
HIGH RESOLUTION TEMPERATURE LOG

Company CITY OF CAPE CORAL
Well SW IW-1
Field SOUTHWEST WRF
County LEE
State FL

Company CITY OF CAPE CORAL
Well SW IW-1
Field SOUTHWEST WRF
County LEE
State FL

Location	Permanent Datum	PAD	Elevation	PAD	Other Services
	Log Measured From	PAD			RTS
	Drilling Measured From	PAD			K.B. D.F. G.L.

Date	31-JULY-08	
Run Number	RTS	
Depth Driller	3280'	
Depth Logger	3280'	
Bottom Logged Interval	3280'	
Top Log Interval	SURFACE	
Open Hole Size	22"	
Type Fluid	WATER	
Density / Viscosity	N/A	
Max. Recorded Temp.	N/A	
Estimated Cement Top	N/A	
Time Well Ready	ON ARRIVAL	
Time Logger on Bottom	0000	
Equipment Number	102	
Location	FT MYERS	
Recorded By	CATHY	
Witnessed By	J LARGY	



Borehole Record				Borehole Record			
Run Number	Bit	From	To	Run Number	Bit	From	To
ONE	12.25"	CASING	514'	SEVEN	34.5"	CASING	2950'
THREE	12.25"	CASING	1749'	EIGHT	22"	CASING	3280'
FOUR	42.50"	CASING	1686'				
SIX	12.25"	CASING	3280'				

Borehole Record				Borehole Record					
Casing String	Size	Wtd/Ft	Top	Bottom	Casing String	Size	Wtd/Ft	Top	Bottom
Casing String	54"	.375	SURFACE	70'	Casing String	48"	.375	SURFACE	485'
Casing String	44"	.375	SURFACE		Casing String	36"	.375	SURFACE	1686'
Casing String	24"	.500 W/T	SURFACE		Casing String	24"	.500 W/T	SURFACE	2950'
Casing String	18"	FRP	SURFACE	2940'					

<<< Fold Here >>>

All interpretations are opinions based on inferences from electrical or other measurements and we cannot and do not guarantee the accuracy or correctness of any interpretation, and we shall not, except in the case of gross or willful negligence on our part, be liable or responsible for any loss, costs, damages, or expenses incurred or sustained by anyone resulting from any interpretation made by any of our officers, agents or employees. These interpretations are also subject to our general terms and conditions set out in our current Price Schedule.

Comments

TEMPERATURE

Charted by:

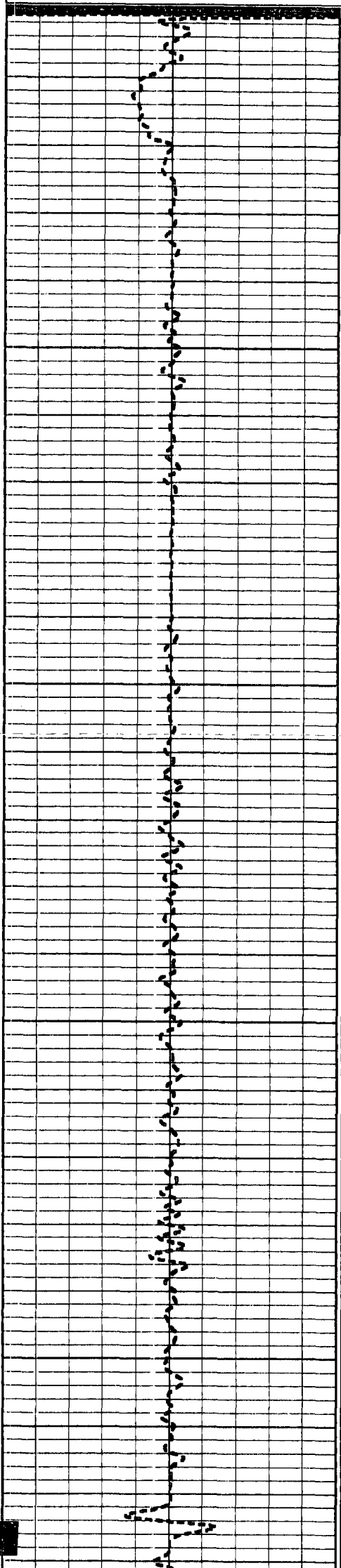
Depth in Feet scaled 1:240

-1 Delta Temperature (degF) 1

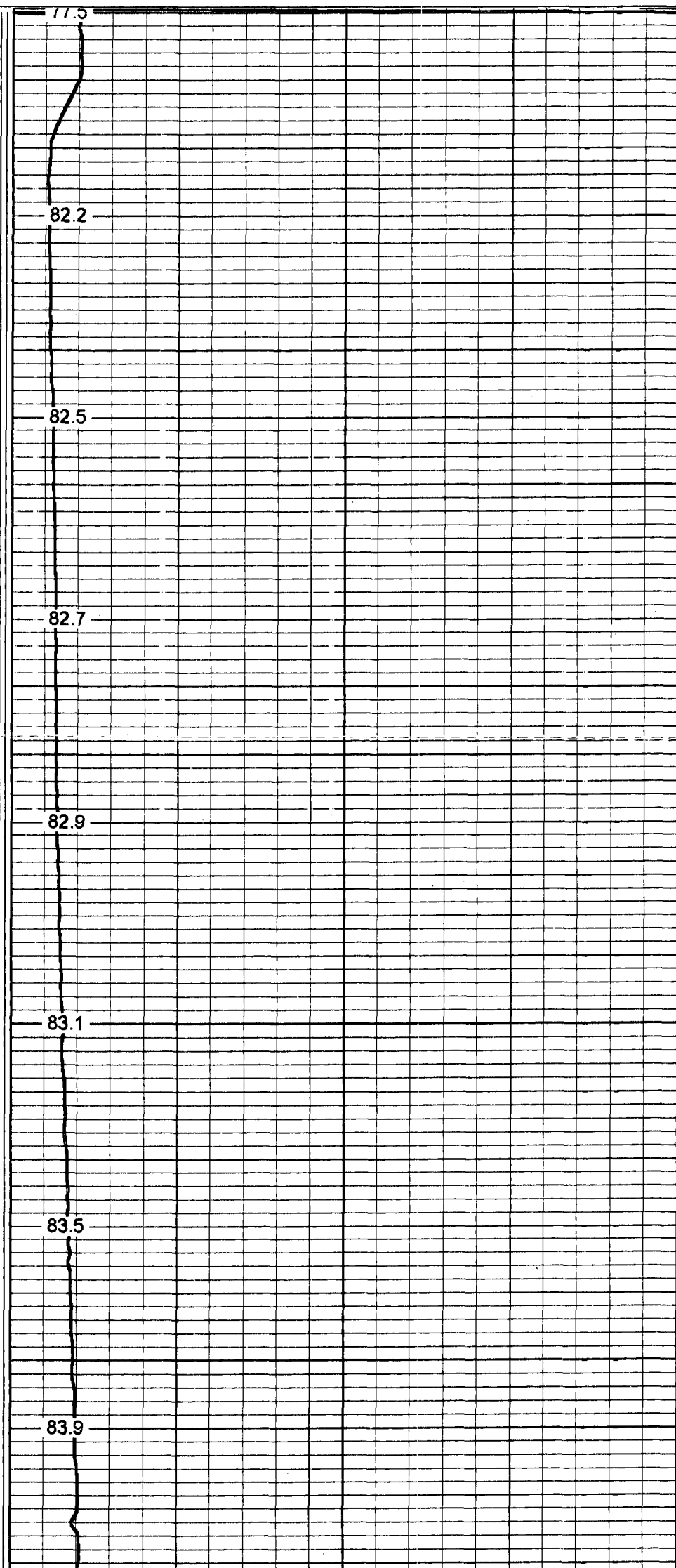
80

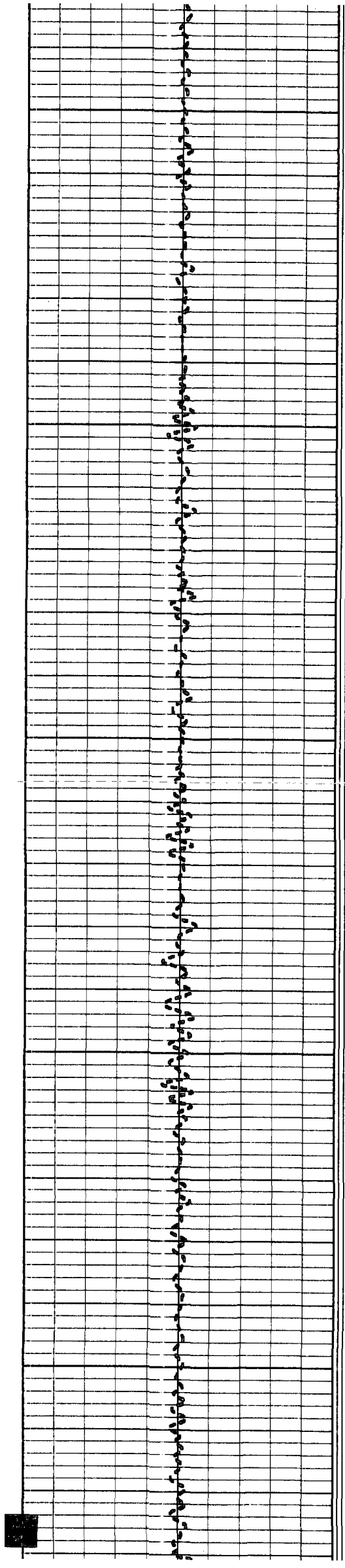
Temperature (degF)

120



0
50
100
150
200





250

300

350

400

450

84.2

84.5

84.8

85.1

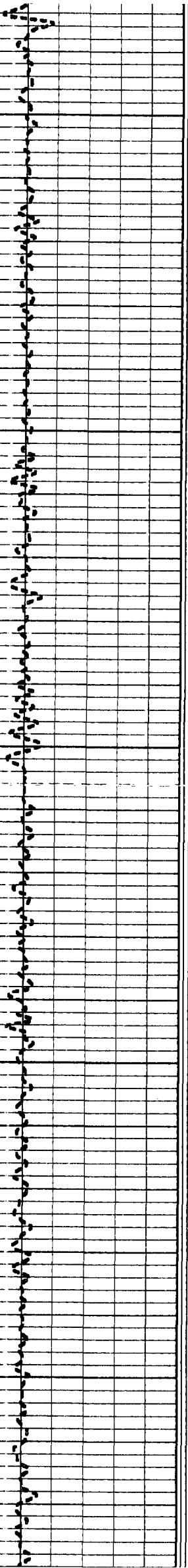
85.3

85.5

85.6

85.9

86.1



500

86.3

550

86.5

600

86.8

87.0

650

87.1

87.1

700

87.6



750

87.9

87.9

800

88.3

88.5

850

88.6

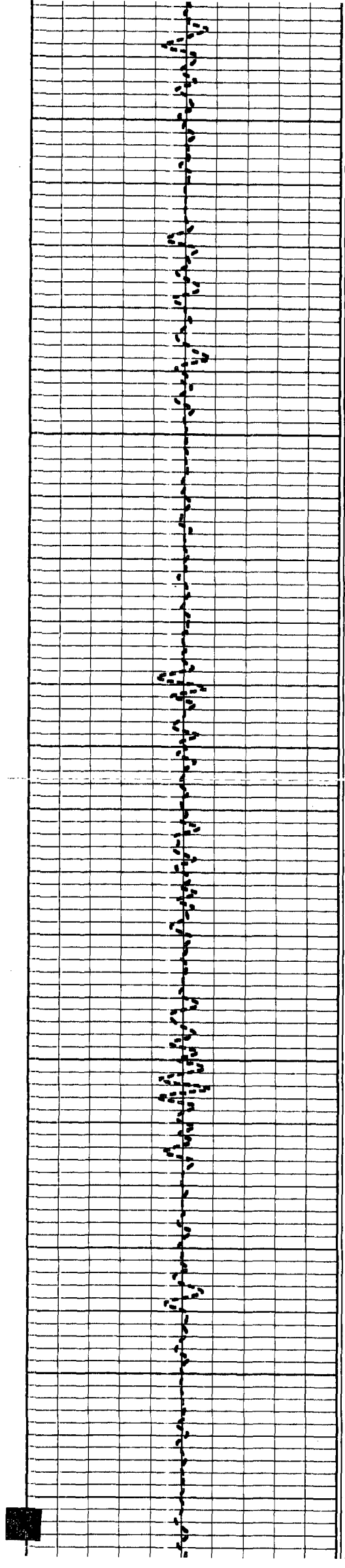
900

88.8

89.2

950

89.4



1000

89.6

89.7

1050

90.2

90.4

1100

90.6

90.9

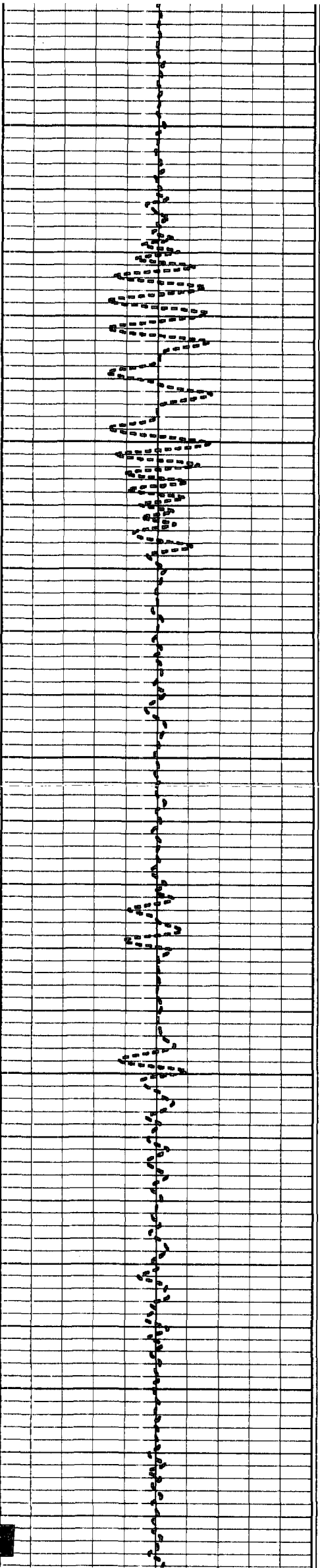
1150

91.2

1200

91.4

91.7



1250

91.8

91.7

1300

92.2

1350

92.4

92.5

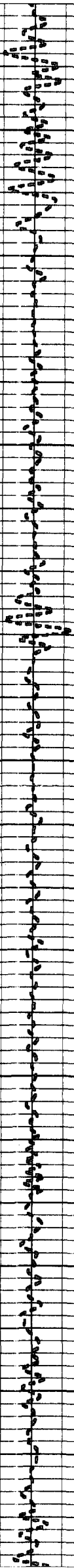
1400

92.9

93.0

1450

93.3



1500

93.5

93.7

1550

94.0

94.2

1600

94.5

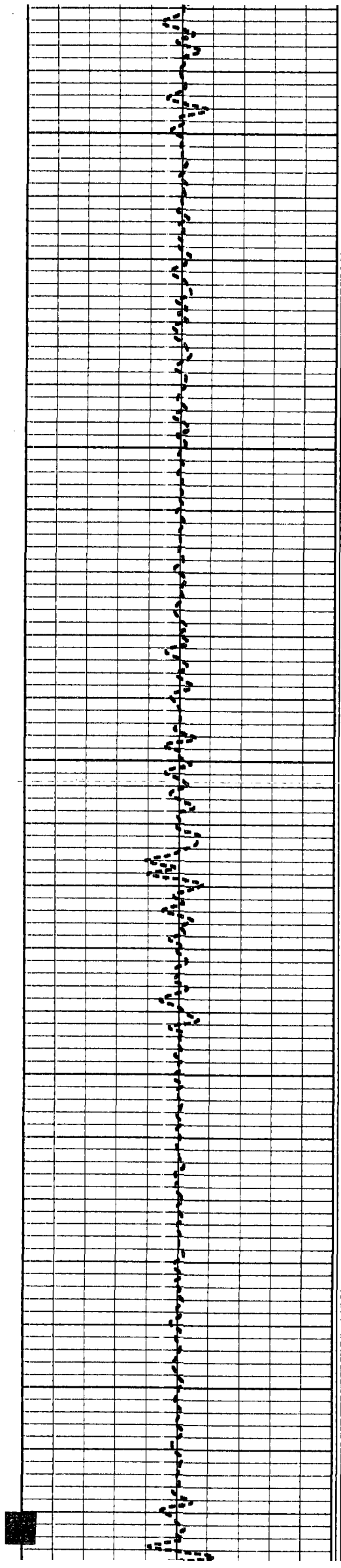
1650

94.7

94.9

1700

95.1



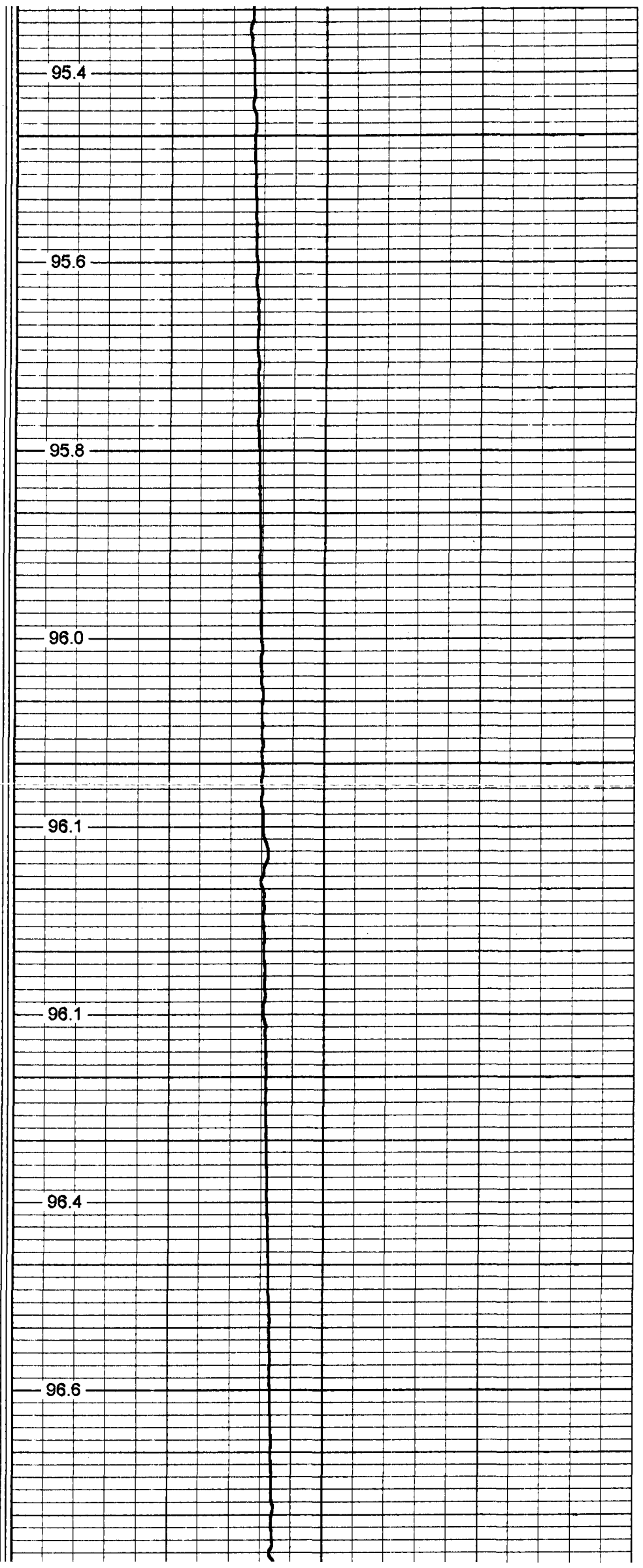
1750

1800

1850

1900

1950



95.4

95.6

95.8

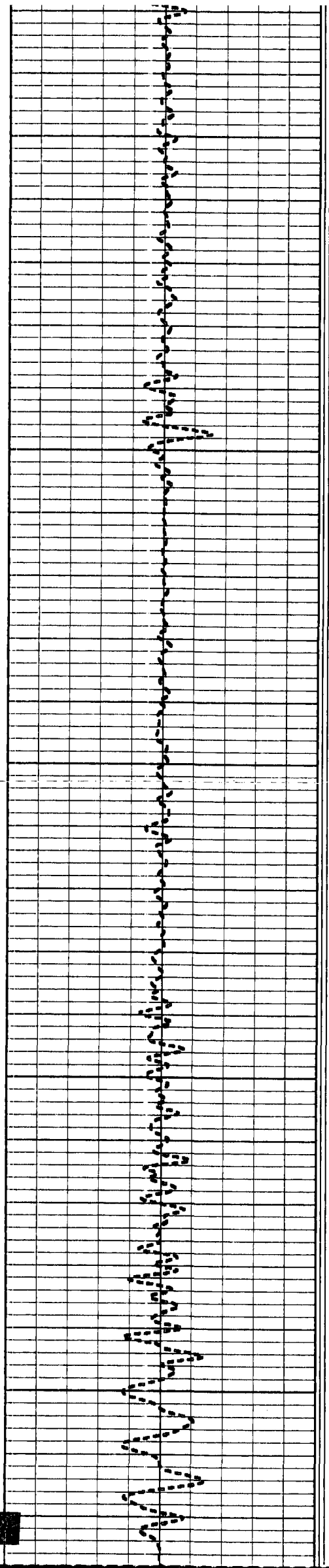
96.0

96.1

96.1

96.4

96.6



2000

2050

2100

2150

2200

96.8

97.1

97.3

97.7

97.8

97.7

97.3

97.5

97.3





2250

97.3

97.6

2300

97.6

97.7

2350

97.8

2400

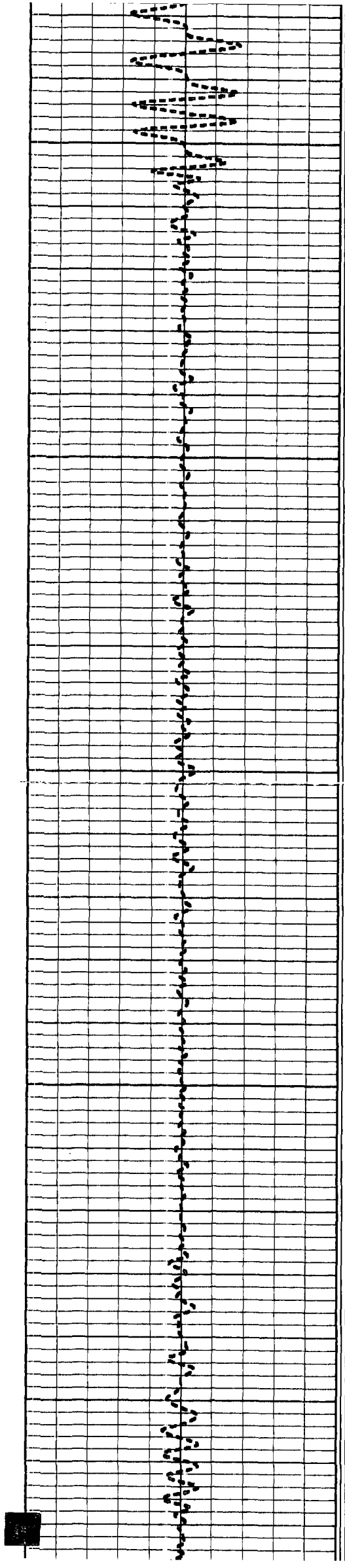
97.8

97.9

2450

97.8





2500

2550

2600

2650

2700

97.9

98.2

98.3

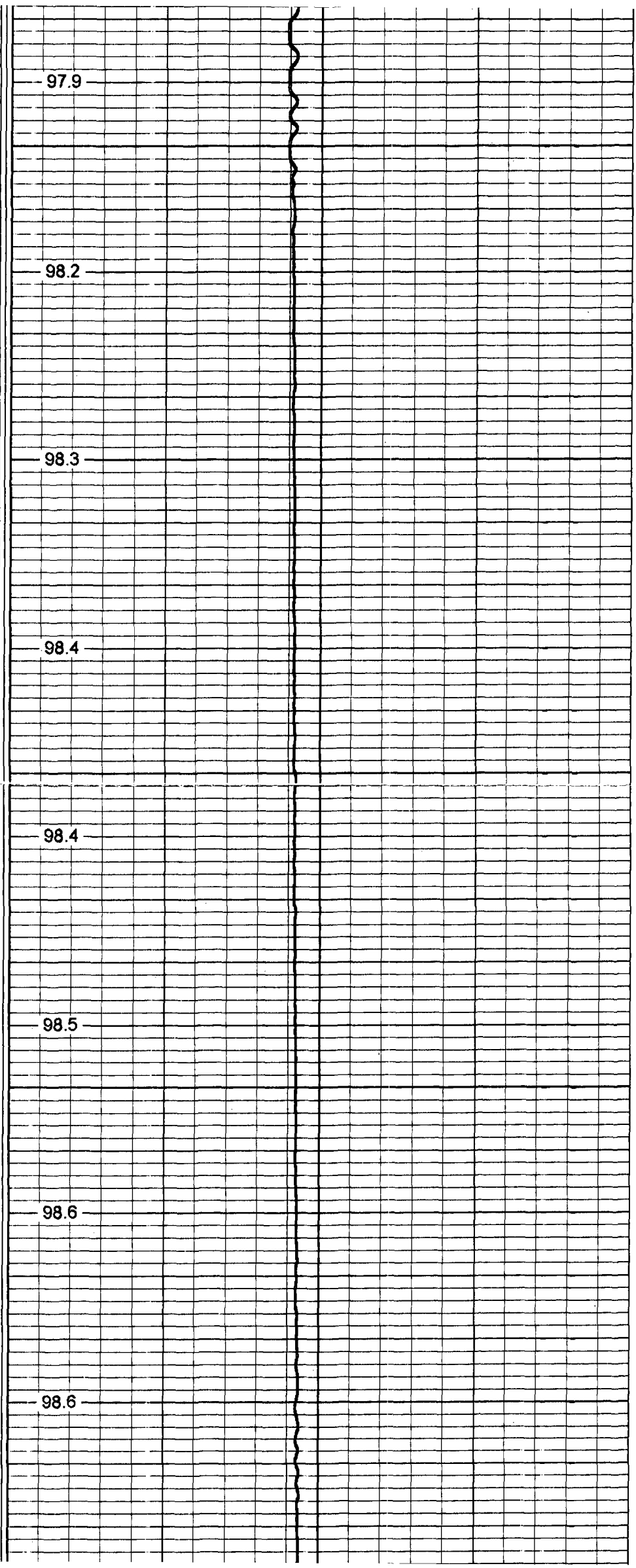
98.4

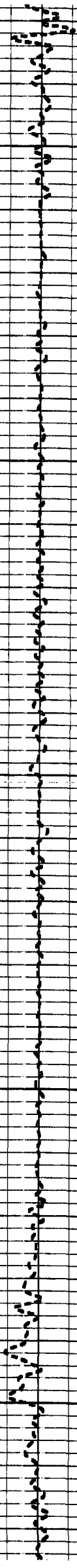
98.4

98.5

98.6

98.6





2750

2800

2850

2900

2950

98.7

98.8

98.9

99.0

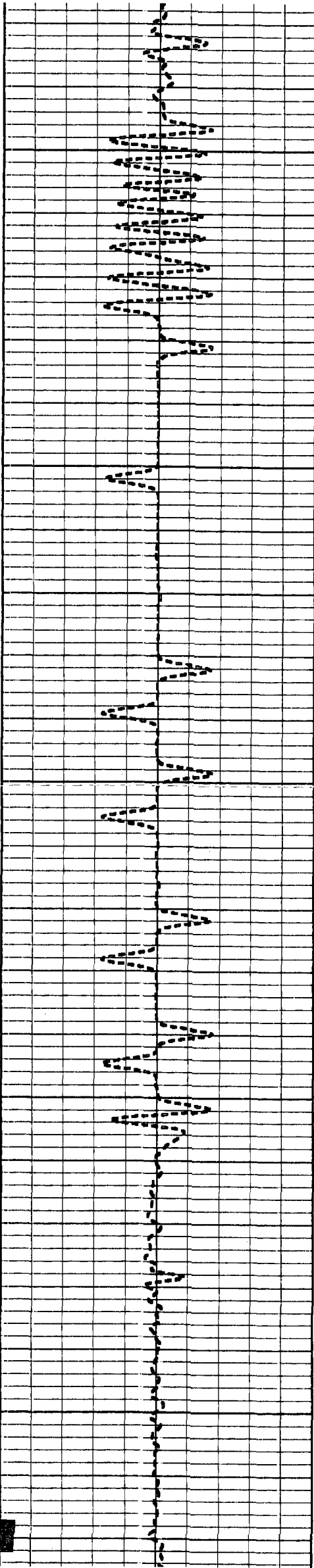
98.9

99.1

99.1

98.3

97.1



3000

3050

3100

3150

3200

98.0

97.9

97.8

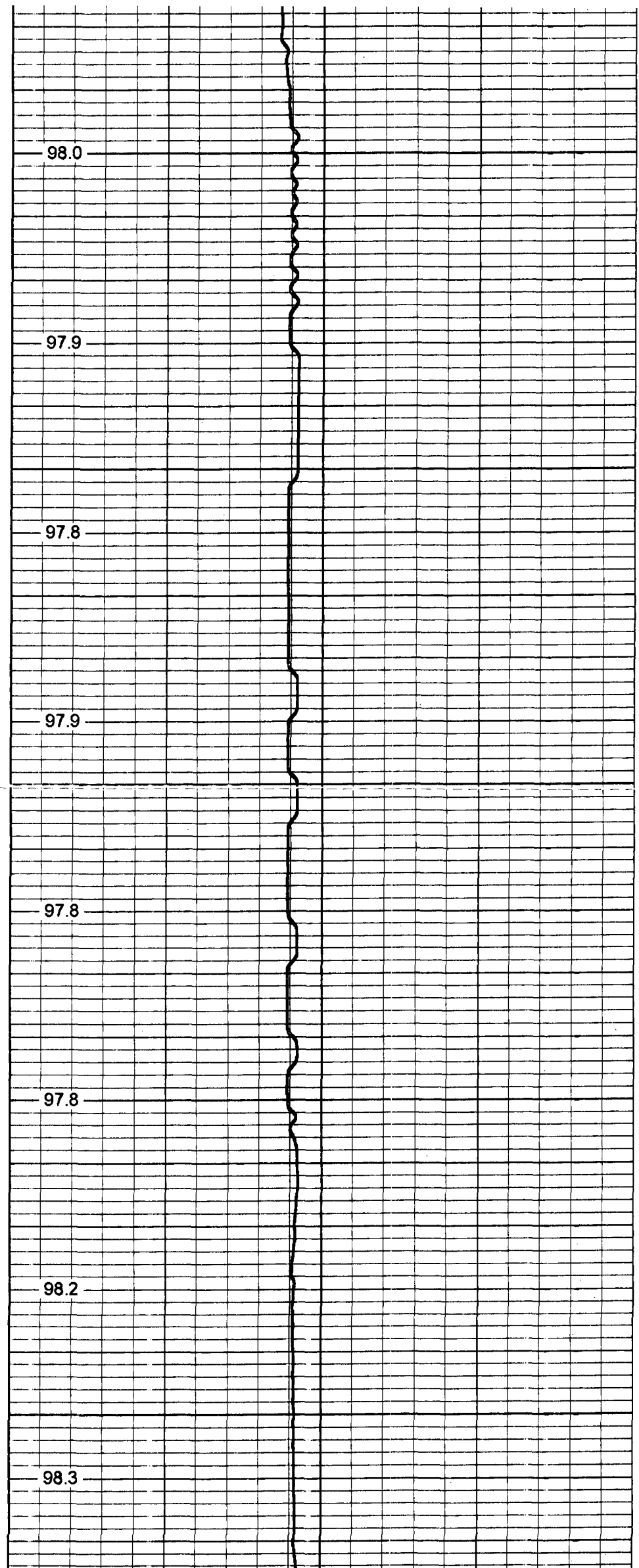
97.9

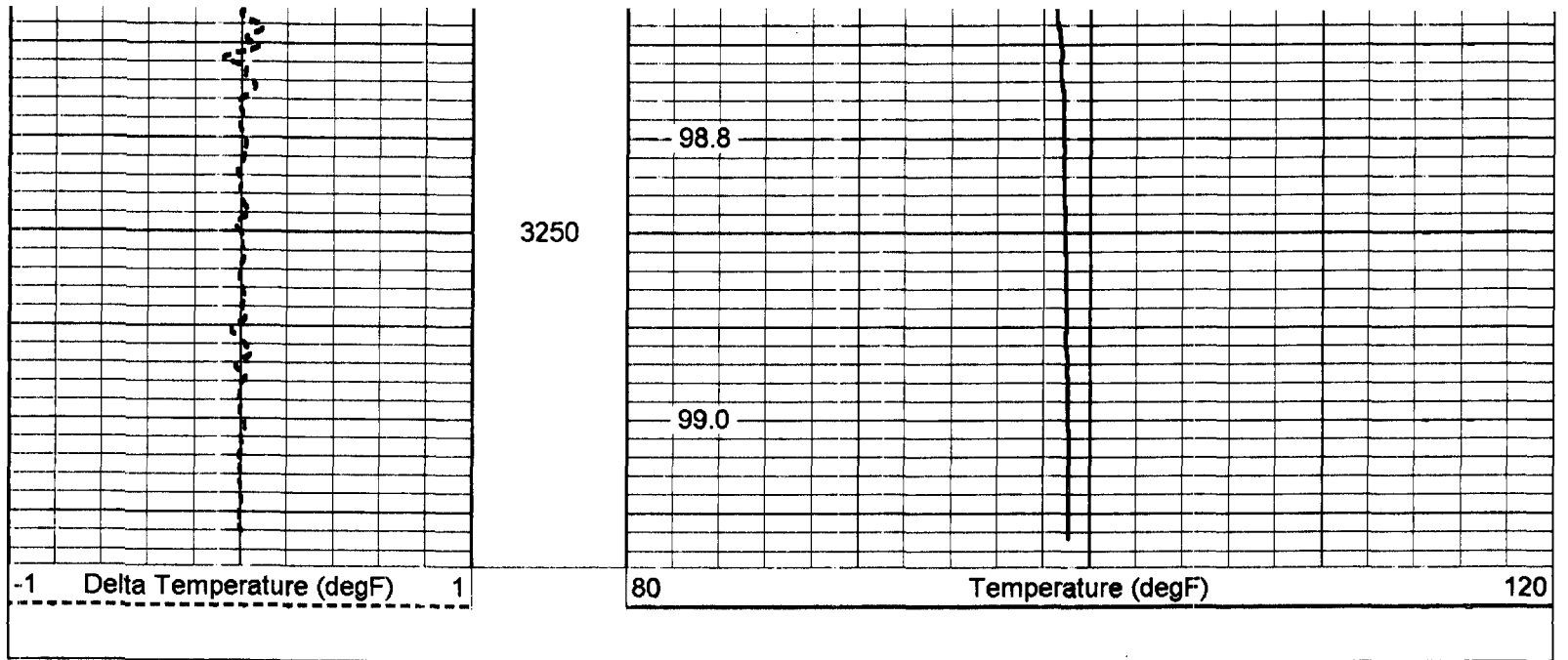
97.8

97.8

98.2

98.3





Temperature Calibration Report					
			Serial Number: 16		
			Tool Model: MLS		
			Performed: Sun Jul 20 07:32:40 2008		
Point #	Reading			Reference	
1	320	cps	32	degF	
2	700	cps	70	degF	
3	2000	cps	200	degF	

