



YOUNGQUIST BROTHERS, Inc
GEOPHYSICAL LOGGING DIVISION

FLUID CONDUCTIVITY TEMPERATURE LOG

Company CITY OF CAPE CORAL
Well SW DZMW1
Field SOUTHWEST WRF
County LEE
State FL

Company CITY OF CAPE CORAL
Well SW DZMW1
Field SOUTHWEST WRF
County LEE
State FL

Location	Permanent Datum	Elevation	Other Services
	Log Measured From	PAD	SEE COMMENTS
	Drilling Measured From	PAD	
		PAD	
		PAD	

RECEIVED - D.E.P.
MAY 30 2008
SOUTH DISTRICT

Date	22-MAY-2008
Run Number	THREE
Depth Driller	1660'
Depth Logger	1660'
Bottom Logged Interval	1660'
Top Log Interval	CASING
Open Hole Size	12.25"
Type Fluid	WATER
Density / Viscosity	N/A
Max. Recorded Temp.	N/A
Estimated Cement Top	N/A
Time Well Ready	ON ARRIVAL
Time Logger on Bottom	18300930
Equipment Number	103
Location	FT MYERS
Recorded By	FULLER
Witnessed By	LARGEY, J

Borehole Record		Borehole Record	
Run Number	Bit	From	To
ONE	12.25"	CASING	500'
TWO	32.5"	CASING	503'
THREE	12.25"	CASING	1660'

Casing Record		Surface String		Production String	
Record	Size	Wdth	Top	Bottom	
Surface String	34"	375" W.T.	SURFACE	75'	
Production String	24"	375" W.T.	SURFACE	500'	

<<< Fold Here >>>

All interpretations are opinions based on inferences from electrical or other measurements and we cannot and do not guarantee the accuracy or correctness of any interpretation, and we shall not, except in the case of gross or willful negligence on our part, be liable or responsible for any loss, costs, damages, or expenses incurred or sustained by anyone resulting from any interpretation made by any of our officers, agents or employees. These interpretations are also subject to our general terms and conditions set out in our current Price Schedule.

Comments

X-Y CALIPER/GAMMA RAY
DUAL INDUCTION
BOREHOLE COMPENSATED SONIC
BOREHOLE TELEVIEWER
FLOWMETER

Entered into
OCULUS
South District

Entered into
OCULUS
South District

YOUNGQUIST BROTHERS, Inc
GEOPHYSICAL LOGGING DIVISION

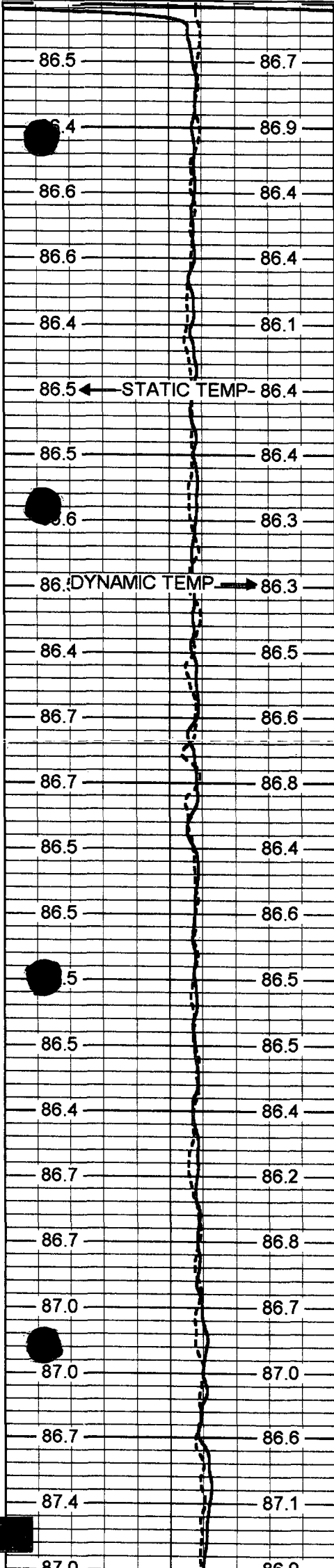
MERGED FCT

Database File: cswdzmw1.db
Dataset Pathname: run3/pass14
Presentation Format: frt_mg
Dataset Creation: Fri May 23 19:43:34 2008 by Log 6.2_B4
Charted by: Depth in Feet scaled 1:240

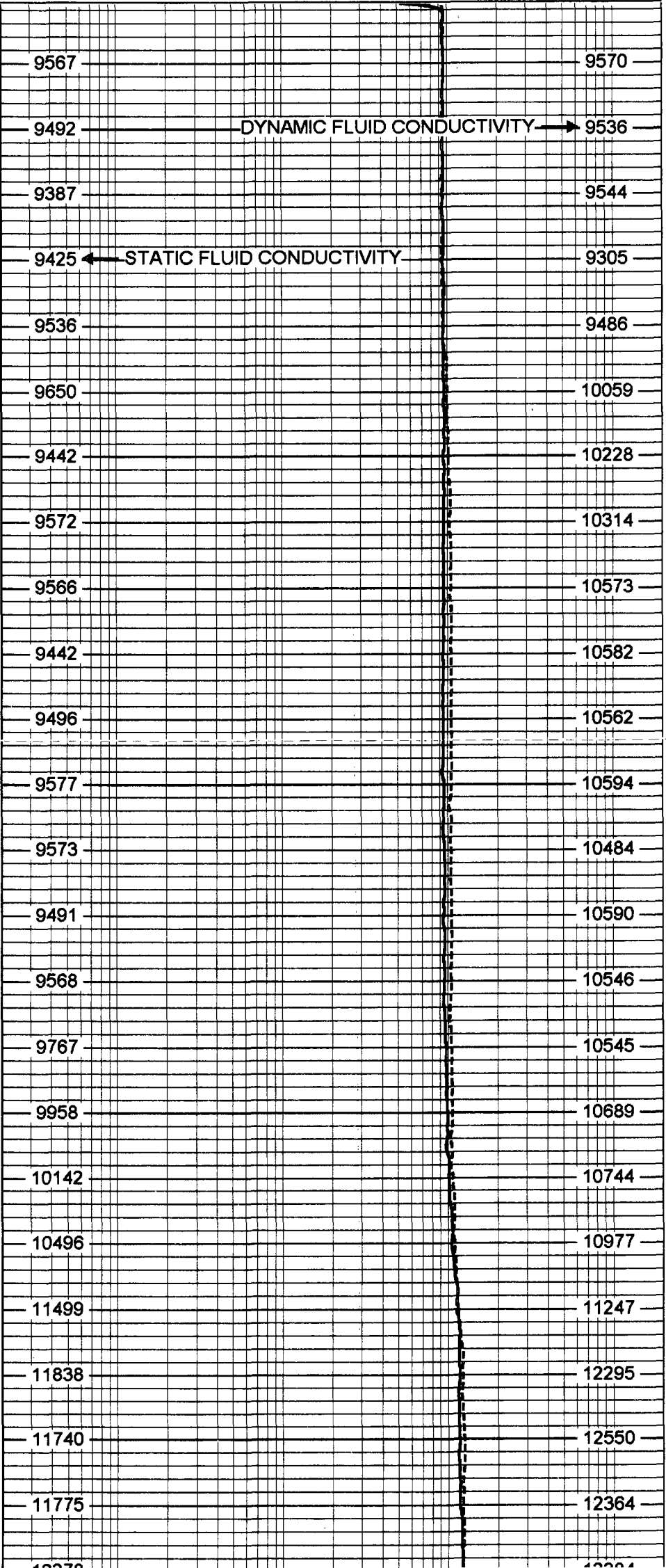
Entered into
OCULUS
South District

75 DYNAMIC TEMP (degF) 95
 75 STATIC TEMP (degF) 95

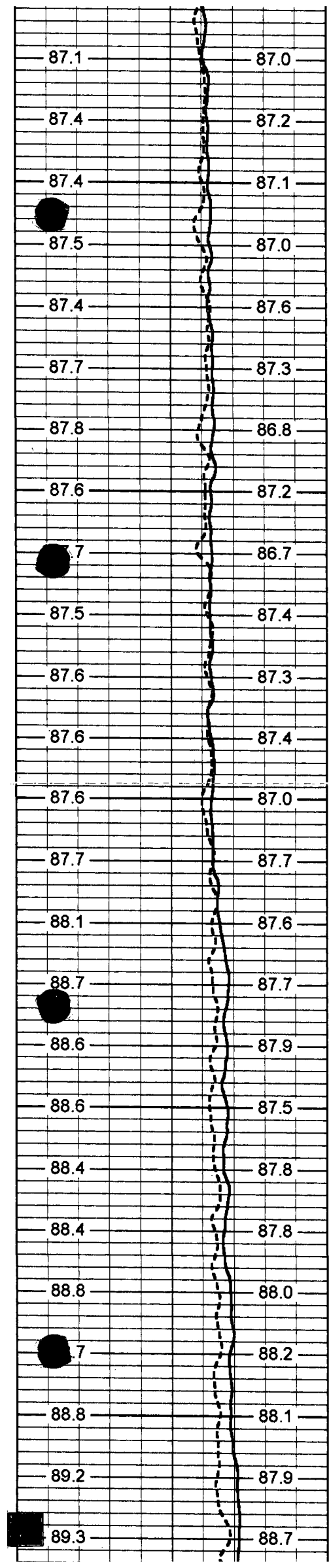
20 DYNAMIC FLUID CONDUCTIVITY (uS) 200000
 20 STATIC FLUID CONDUCTIVITY (uS) 200000



500
550
600
650
700



DYNAMIC FLUID CONDUCTIVITY
 STATIC FLUID CONDUCTIVITY



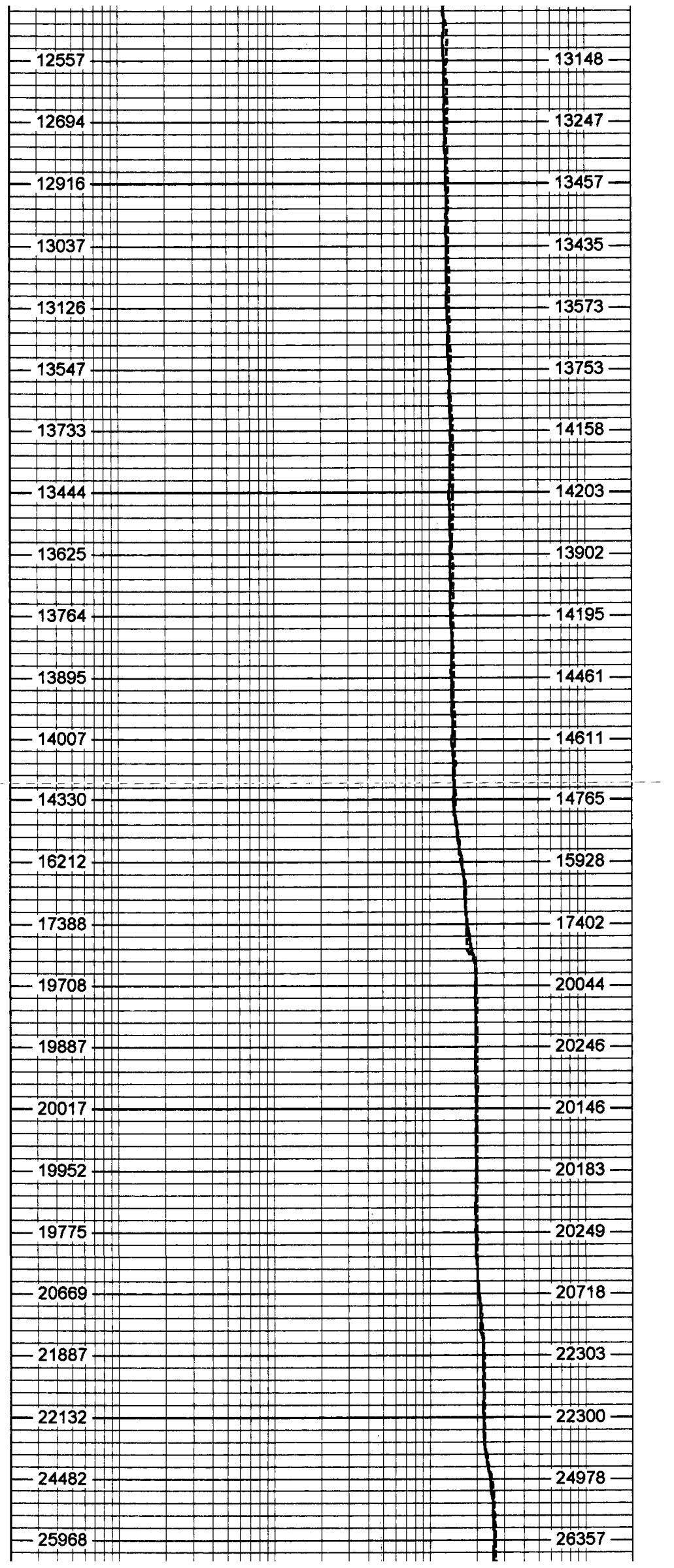
750

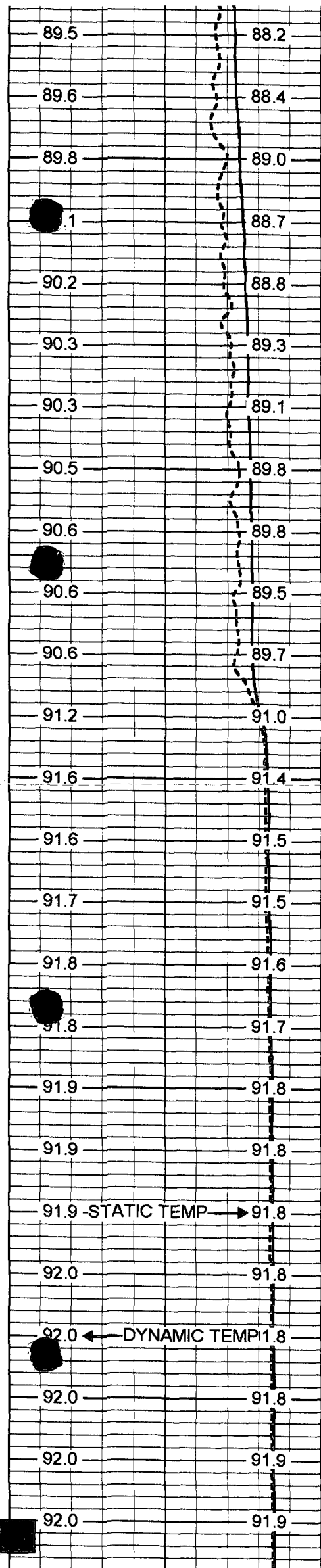
800

850

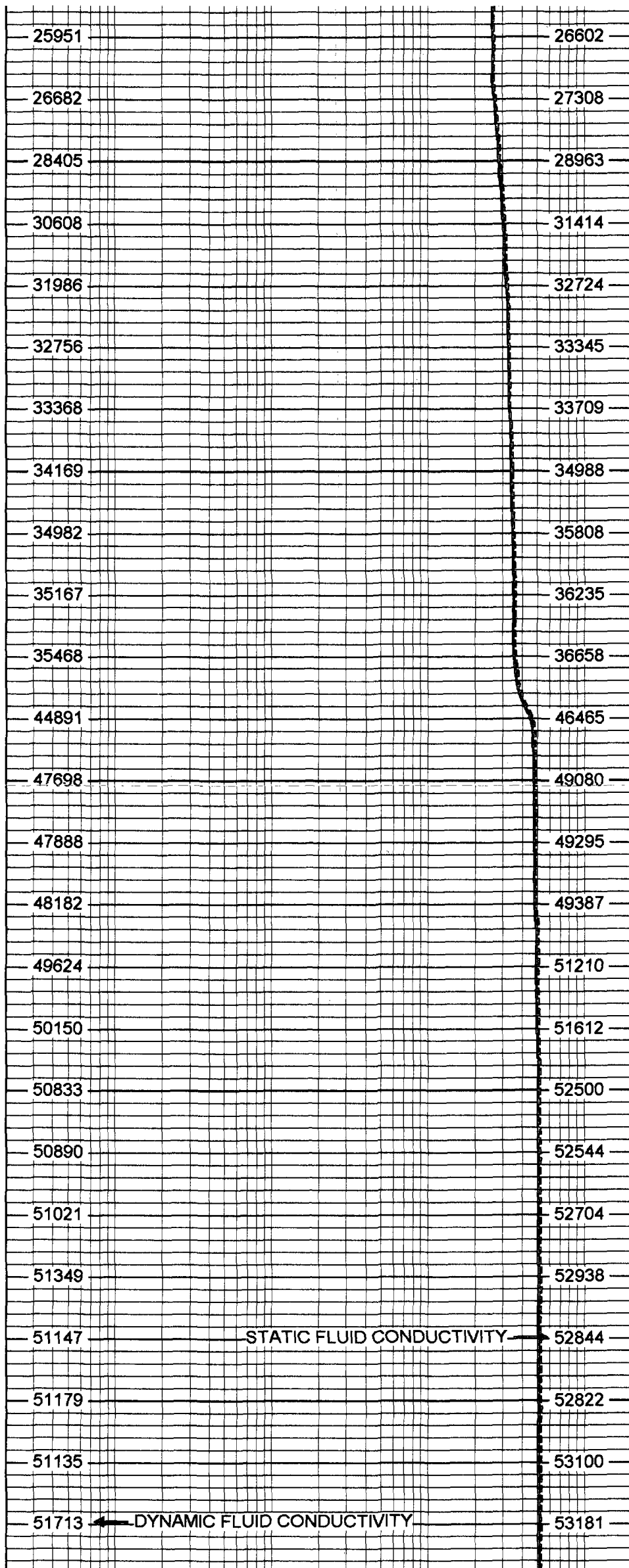
900

950





1000
1050
1100
1150
1200



STATIC FLUID CONDUCTIVITY

DYNAMIC FLUID CONDUCTIVITY

91.9 - STATIC TEMP

DYNAMIC TEMP

92.1	91.9
92.1	91.9
92.1	92.0
92.2	92.1
92.2	92.1
92.2	92.1
92.2	92.1
92.2	92.1
92.2	92.1
92.2	92.2
92.3	92.2
92.3	92.2
92.3	92.3
92.3	92.3
92.3	92.3
92.3	92.2
92.4	92.3
92.4	92.3
92.4	92.3
92.4	92.3
92.4	92.3
92.4	92.4
92.5	92.4
92.4	92.4
92.4	92.4
92.5	92.4
92.5	92.4
92.5	92.5

1250

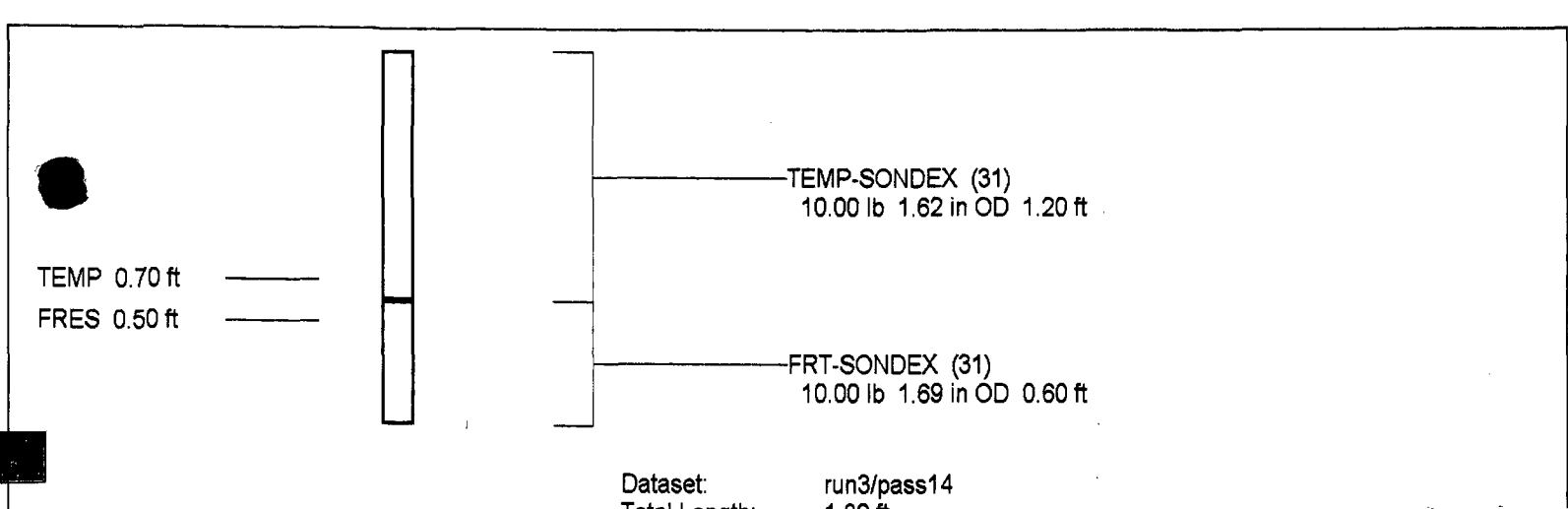
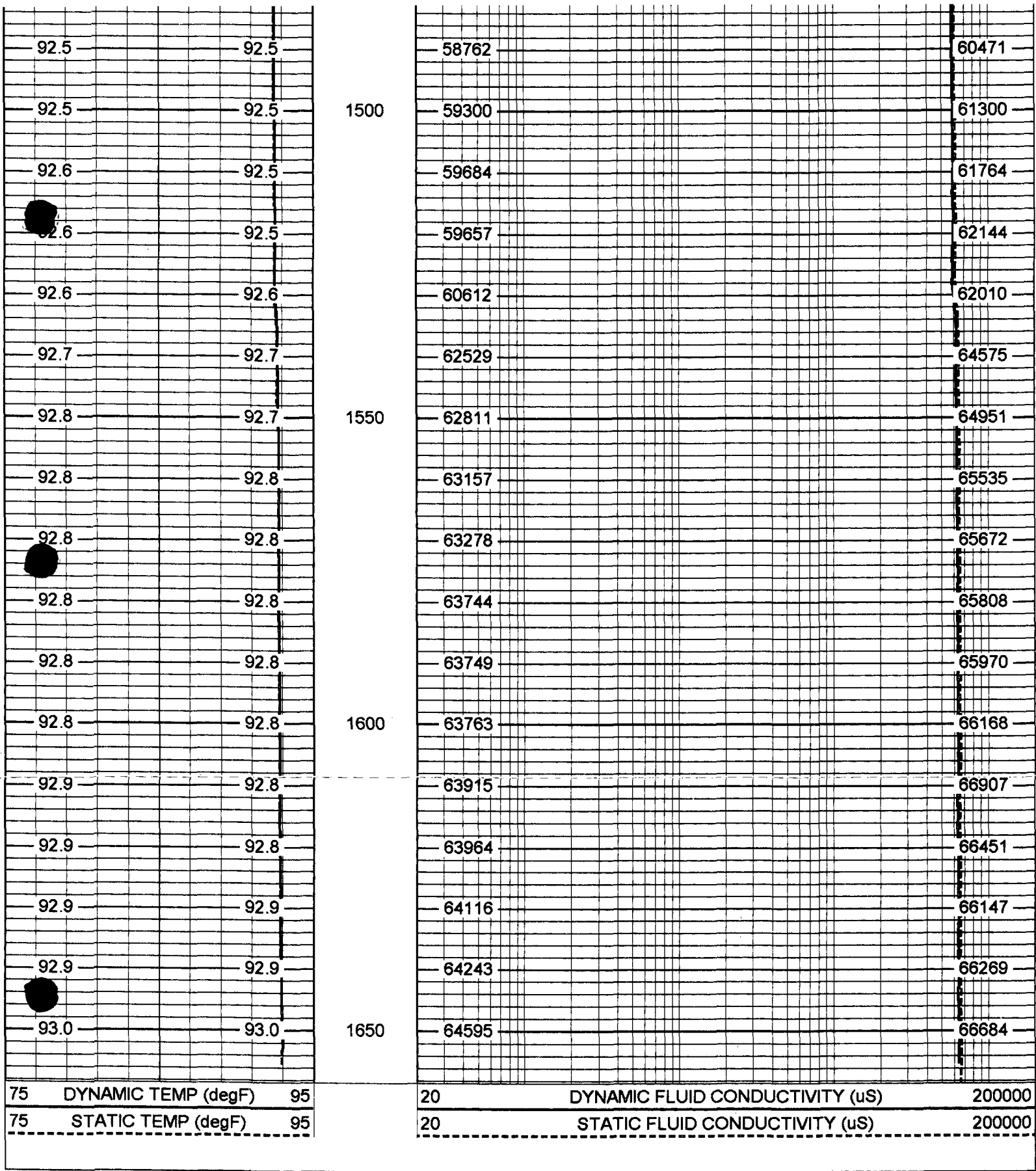
1300

1350

1400

1450

51605	53707
51672	53589
52388	54602
52901	55145
52870	55514
53193	55204
52999	55605
53415	55664
53299	55669
53333	55781
53237	55955
54589	56450
54742	56746
54818	57049
54956	57002
55090	56930
55671	57185
55639	57090
55507	57460
55815	57513
55747	57654
56478	58407
57566	59373
57362	59371
58203	60382
58348	60246



Total Weight: 20.00 lb
O.D. 1.69 in

FRT Calibration Report

Serial Number: 31
Tool Model: SONDEX
Performed: Wed Apr 23 13:04:02 2008

Point #	Reading		Reference
1	31.164	cps	1000.000
2	167.193	cps	10000.000
3	415.824	cps	25000.000
4	918.476	cps	50000.000
5		cps	
6		cps	

Temperature Calibration Report

Serial Number: 31
Tool Model: SONDEX
Performed: Wed Apr 23 13:13:36 2008

Point #	Reading		Reference	
1	152.98	cps	39	degF
2	330.989	cps	82	degF
3	688.237	cps	157	degF

