



YOUNGQUIST BROTHERS, Inc
GEOPHYSICAL LOGGING DIVISION

**FLUID CONDUCTIVITY
RECEIVED TEMPERATURE
LOG**
SOUTH DISTRICT

2009 OCT 11 A 10:49

Company ARCADIS
Well MW-1
Field KEY LARGO
County MONROE
State FLORIDA

Company ARCADIS
Well MW-1
Field KEY LARGO
County MONROE
State FLORIDA

Location: API #:
SEC TWP RGE
Permanent Datum GL
Log Measured From GL
Drilling Measured From GL
Elevation
Other Services
SEE COMMENTS

Date	30-MAR-2009		
Run Number	SIX		
Depth Driller	1700'		
Depth Logger	1703'		
Bottom Logged Interval	1703'		
Top Log Interval	CASING		
Open Hole Size	12.25"		
Type Fluid	WATER		
Density / Viscosity	NA		
Max. Recorded Temp.	NA		
Estimated Cement Top	NA		
Time Well Ready	1530		
Time Logger on Bottom	1600		
Equipment Number	102		
Recorded By	FT. MYERS		
Reviewed By	FULLER		
Assessed By	L. KWAPINSKI		

Borehole Record		Borehole Record	
Run Number	Bit	From	To
ONE	42.5"	SURFACE	229'
TWO	12.25"	CASING	1076'
THREE	32.5"	CASING	1062'
FOUR	12.25"	CASING	1703'

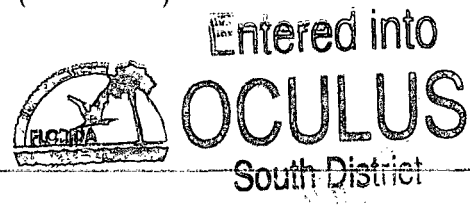
Casing Record		Top		Bottom	
Surface String	Size	WT	WT	WT	WT
Surface String	34"	37.5	WT	SURFACE	225'
Production String	24"	37.5	WT	SURFACE	1058'

<<< Fold Here >>>

All interpretations are opinions based on inferences from electrical or other measurements and we cannot and do not guarantee the accuracy or correctness of any interpretation, and we shall not, except in the case of gross or willful negligence on our part, be liable or responsible for any loss, costs, damages, or expenses incurred or sustained by anyone resulting from any interpretation made by any of our officers, agents or employees. These interpretations are also subject to our general terms and conditions set out in our current Price Schedule.

Comments

X-Y CALIPER/GAMMA RAY
DUAL INDUCTION
BOREHOLE COMPENSATED SONIC
FLOW
DYNAMIC FLOW RATE = (265 GPM)



YOUNGQUIST BROTHERS, Inc
GEOPHYSICAL LOGGING DIVISION

DYNAMIC FCT

Database File: largomw1.db
Dataset Pathname: run6/pass9
Presentation Format: frt_mg
Dataset Creation: Tue Mar 31 04:39:43 2009 by Log 6.2_B4
Charted by: Depth in Feet scaled 1:240

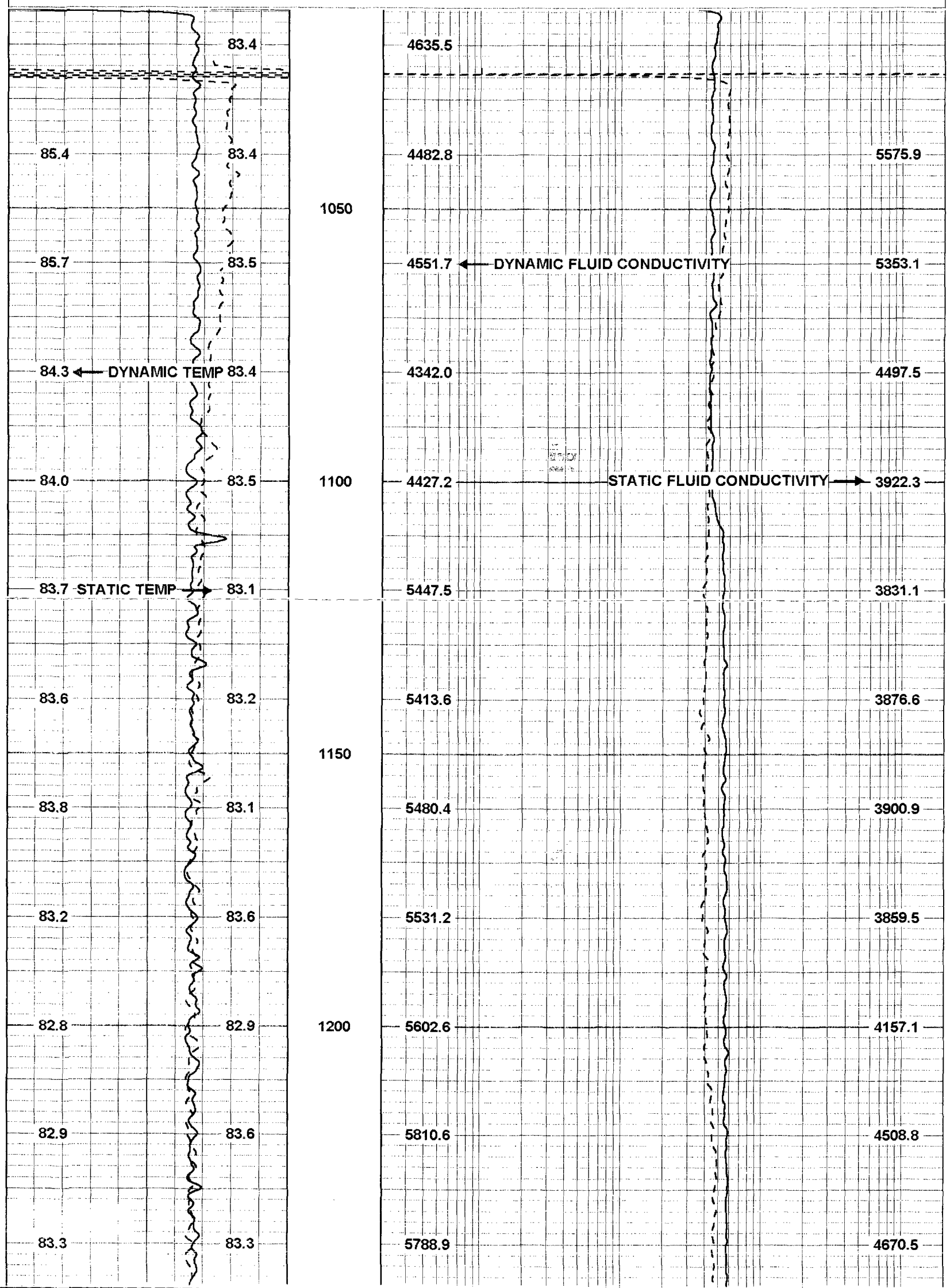
70	DYNAMIC TEMP (degF)	90	20	DYNAMIC FLUID CONDUCTIVITY (uS)	200000
----	---------------------	----	----	---------------------------------	--------

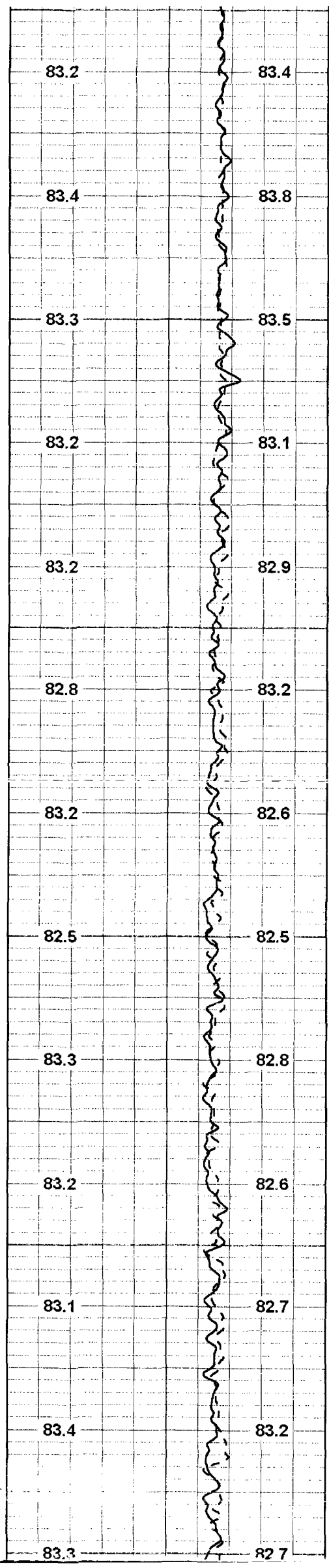
DYNAMIC TEM
(degF)

STATIC TEM
(degF)

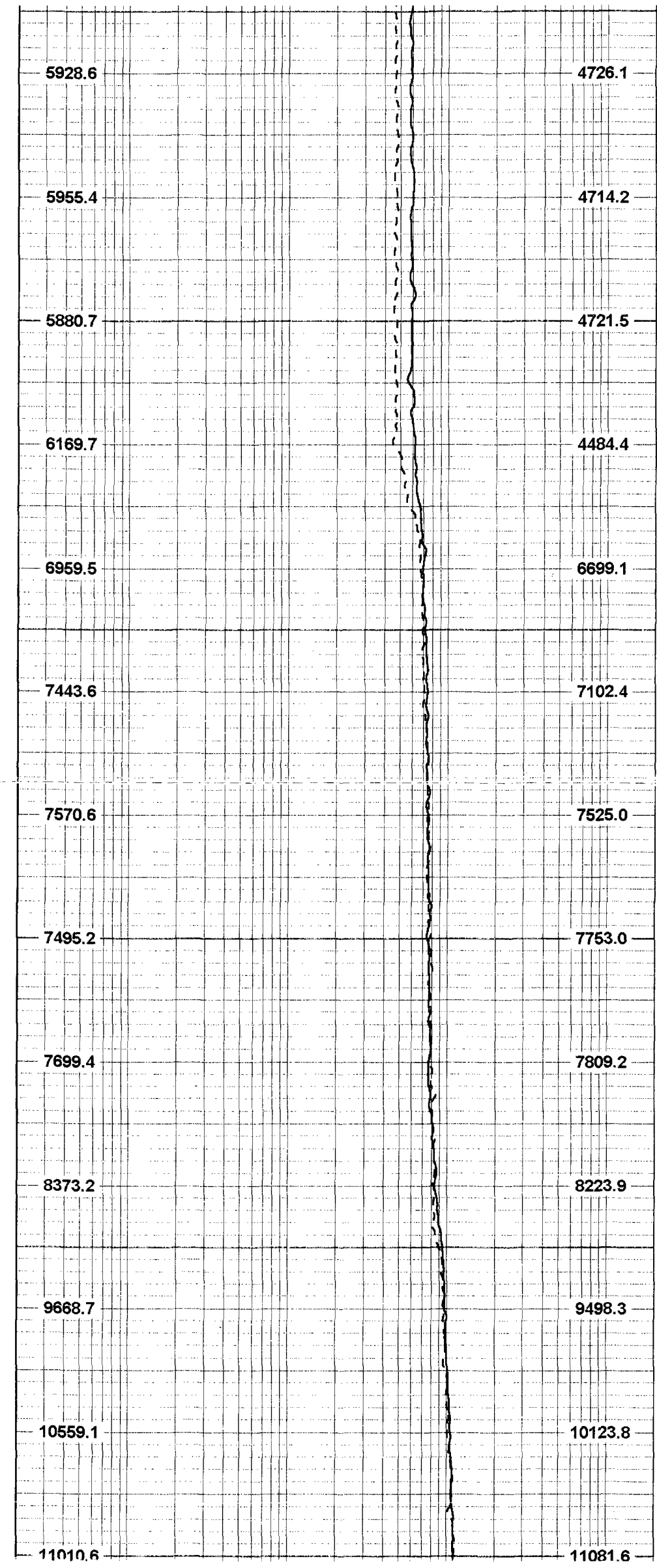
FLUID COND

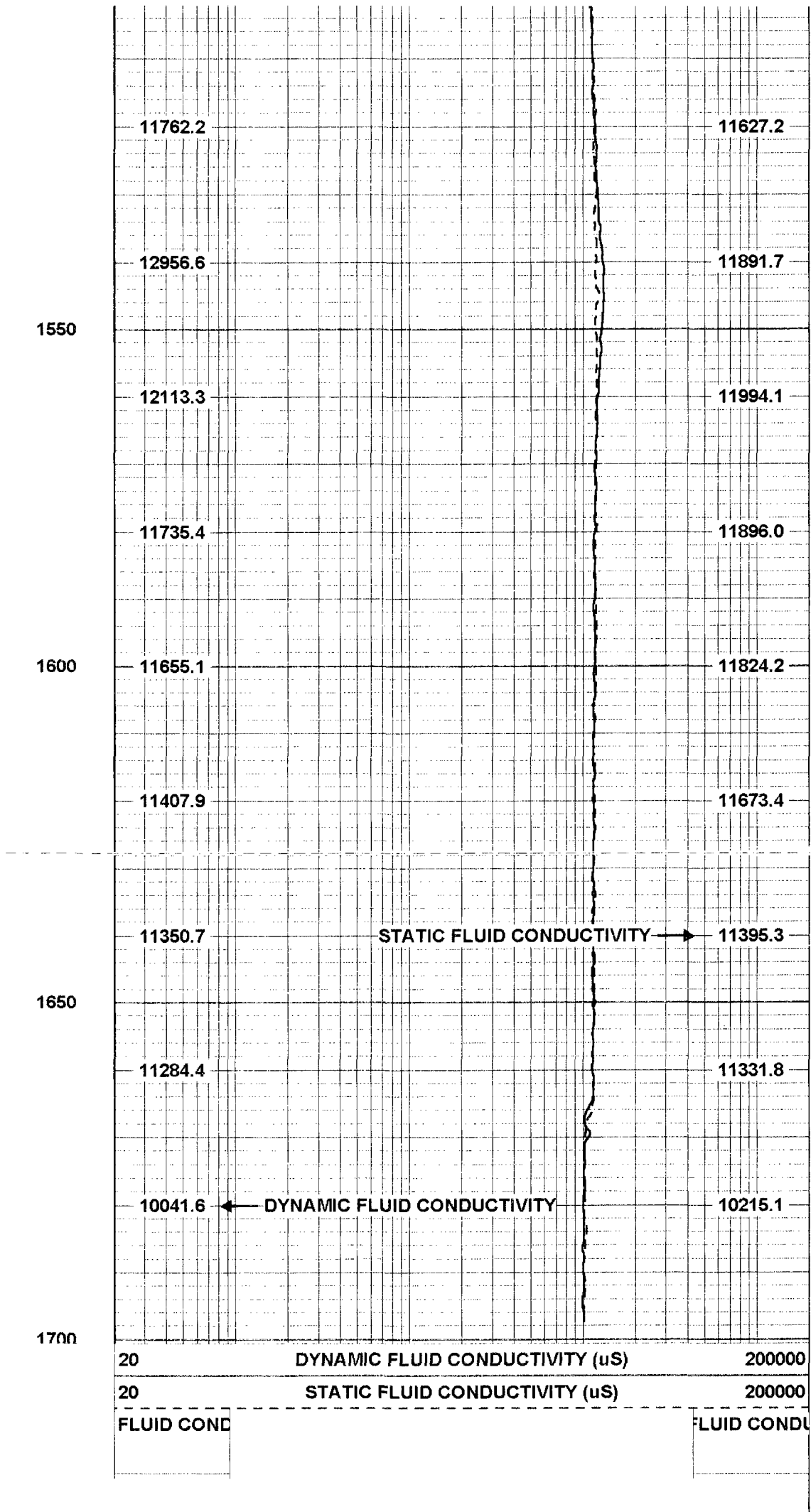
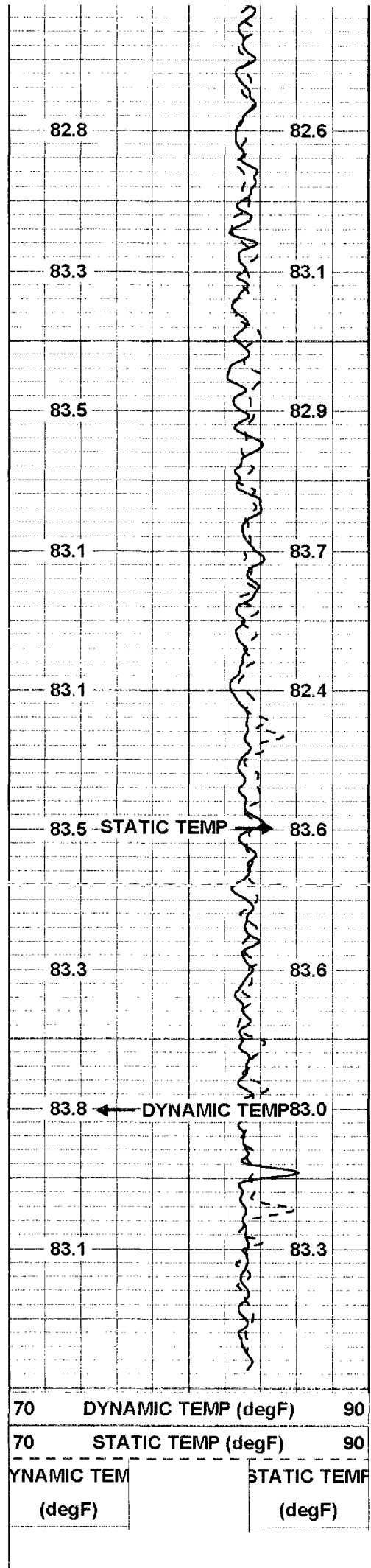
FLUID CONDU





1250
1300
1350
1400
1450
1500





Sensor	Offset (ft)	Schematic	Description	Len (ft)	OD (in)	Wt (lb)
			TEMP-SONDEX (30)	1.20	1.63	10.00

TEMP 0.70
FRES 0.50

FRT-SONDEX (30)

0.60

1.69

10.00

Dataset: largomw1.db: field/well/run6/pass9
Total Length: 1.80 ft
Total Weight: 20.00 lb
O.D. 1.69 in

Calibration Report

Database File: largomw1.db
Dataset Pathname: run6/pass9
Dataset Creation: Tue Mar 31 04:39:43 2009 by Log 6.2_B4

Temperature Calibration Report

Serial Number: 30
Tool Model: SONDEX
Performed: Wed May 28 17:31:07 2008

Point #	Reading		Reference	
1	148.879	cps	39	degF
2	347.752	cps	85	degF
3	741.715	cps	165	degF
4		cps		degF
5		cps		degF
6		cps		degF
7		cps		degF
8		cps		degF
9		cps		degF
10		cps		degF