

2010 OCT 11 AM 10:48

Company **ARCADIS**  
Well **IW-1**  
Field **KEY LARGO**  
County **MONROE**  
State **FL**

Company **ARCADIS**  
Well **IW-1**  
Field **KEY LARGO**  
County **MONROE** State **FLORIDA**

Location	Permanent Datum	GL	Elevation	Other Services SEE COMMENTS
	Log Measured From	GL		
	Drilling Measured From	GL		

Date	26-MAY-2009
Run Number	RTS
Depth Driller	3603'
Depth Logger	3603'
Bottom Logged Interval	3603'
Top Log Interval	SURFACE
Open Hole Size	20"
Type Fluid	WATER
Density / Viscosity	NA
Max. Recorded Temp.	NA
Estimated Cement Top	NA
Time Well Ready	0800
Time Logger on Bottom	0830
Equipment Number	102
Location	FT. MYERS
Recorded By	CATHEY
Witnessed By	MILLER, ROD

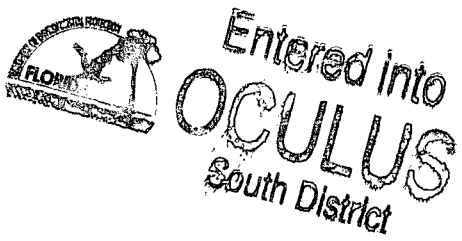
Borehole Record		Borehole Record					
Run Number	Bit	From	To	Run Number	Bit	From	To
ONE	60.5"	SURFACE	227'	FIVE	34.5"	CASING	1735'
TWO	12.25"	CASING	1160'	SIX	12.25"	CASING	3693'
THREE	46.5"	CASING	1071'	SEVEN	26.5"	CASING	2737'
FOUR	12.25"	CASING	1746'	EIGHT	20"	CASING	3603'

<<< Fold Here >>>

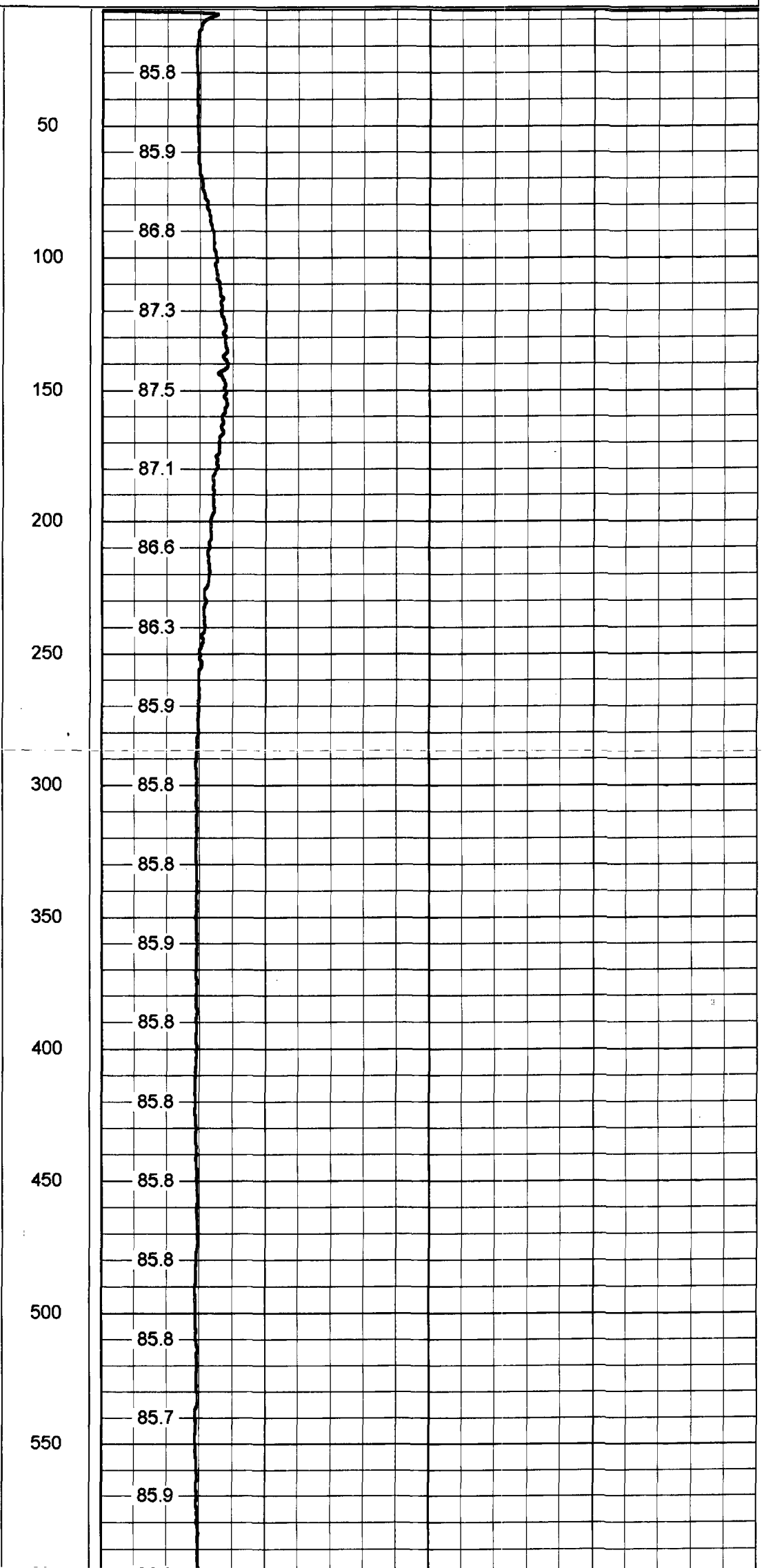
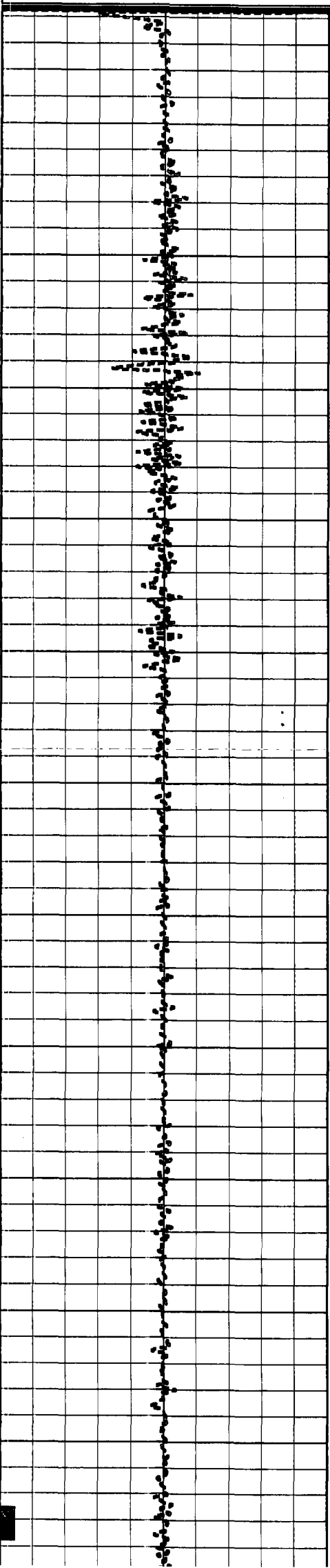
All interpretations are opinions based on inferences from electrical or other measurements and we cannot and do not guarantee the accuracy or correctness of any interpretation, and we shall not, except in the case of gross or willful negligence on our part, be liable or responsible for any loss, costs, damages, or expenses incurred or sustained by anyone resulting from any interpretation made by any of our officers, agents or employees. These interpretations are also subject to our general terms and conditions set out in our current Price Schedule.

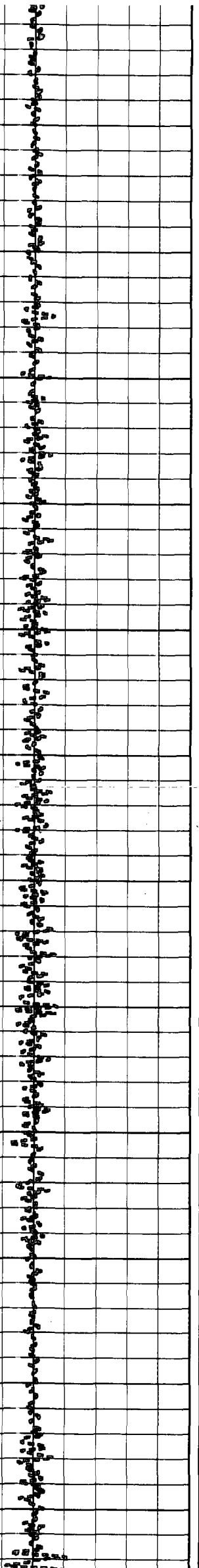
Comments

RTS



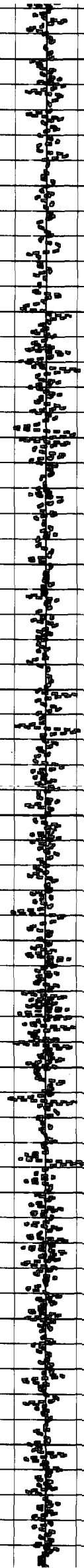
**TEMPERATURE**





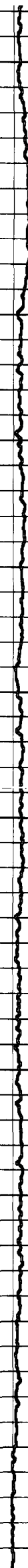
650  
700  
750  
800  
850  
900  
950  
1000  
1050  
1100  
1150  
1200

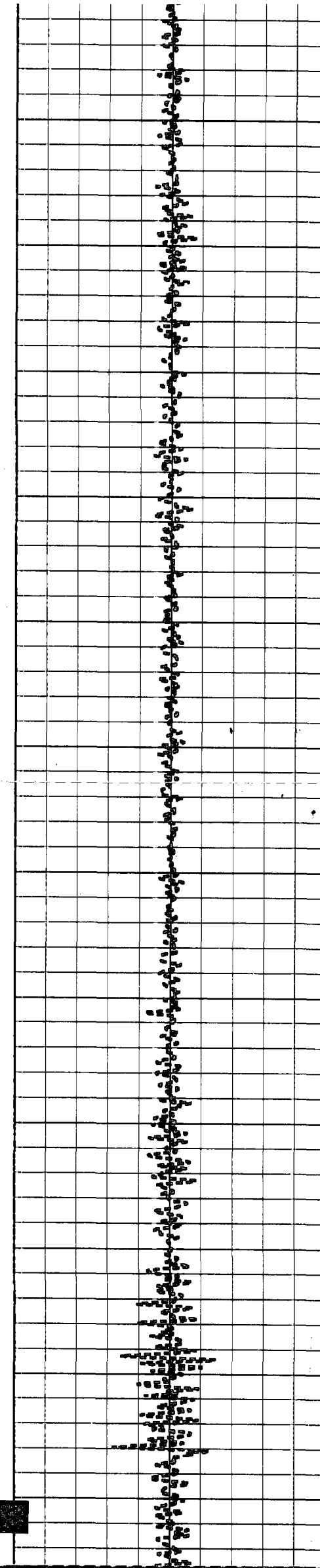
85.8  
85.9  
86.0  
85.9  
85.9  
86.0  
86.1  
86.0  
86.1  
86.1  
86.4  
86.2  
86.2  
86.2  
86.3  
86.1  
85.9  
85.9  
86.0  
86.1



1250  
1300  
1350  
1400  
1450  
1500  
1550  
1600  
1650  
1700  
1750  
1800  
1850

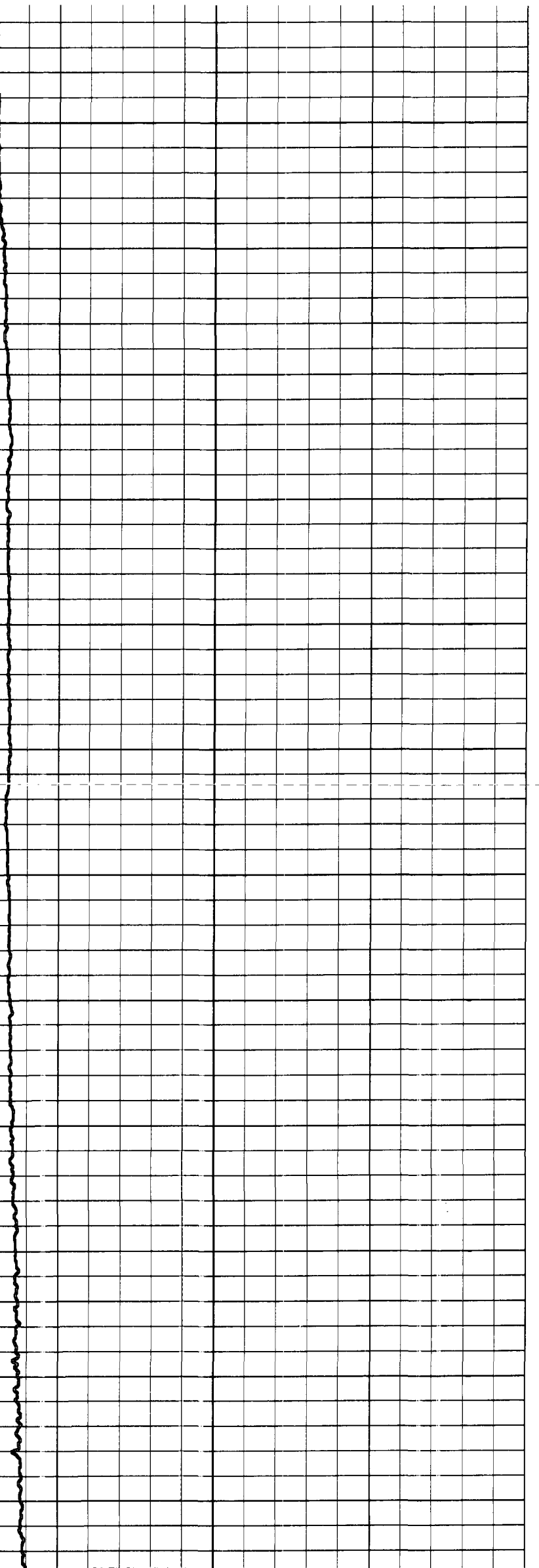
86.4  
86.3  
86.9  
86.9  
86.3  
86.4  
86.5  
86.7  
86.5  
86.3  
86.4  
86.6  
86.2  
86.5  
86.4  
86.6  
86.5  
86.3  
86.3  
86.1  
86.0

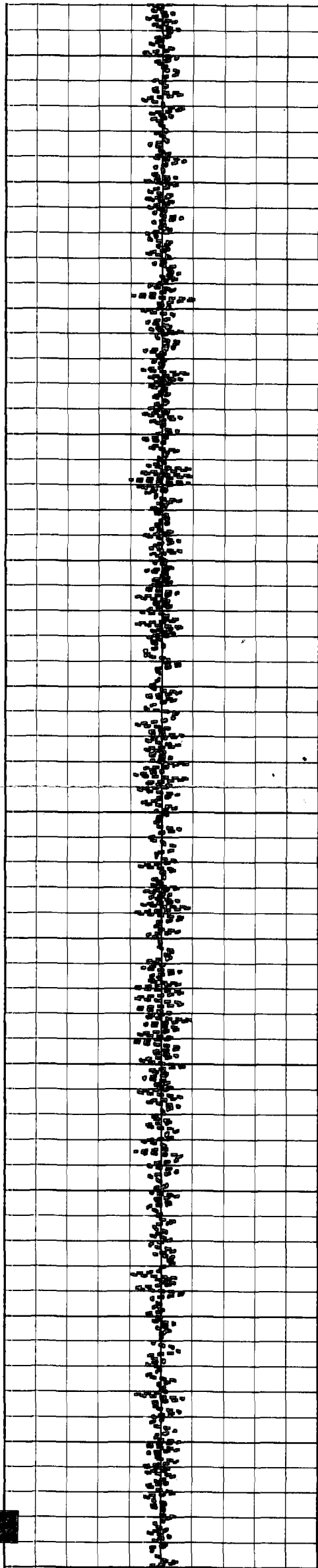




1900  
1950  
2000  
2050  
2100  
2150  
2200  
2250  
2300  
2350  
2400  
2450

86.0  
86.1  
86.1  
86.5  
86.5  
86.8  
86.7  
86.8  
86.7  
86.9  
86.8  
86.8  
86.9  
87.0  
87.0  
87.1  
87.3  
87.4  
87.5  
87.2  
87.7





2500

2550

2600

2650

2700

2750

2800

2850

2900

2950

3000

3050

3100



87.9

88.1

88.3

88.1

88.6

88.7

88.9

88.7

88.5

87.8

87.9

87.9

88.0

87.9

88.0

88.3

88.4

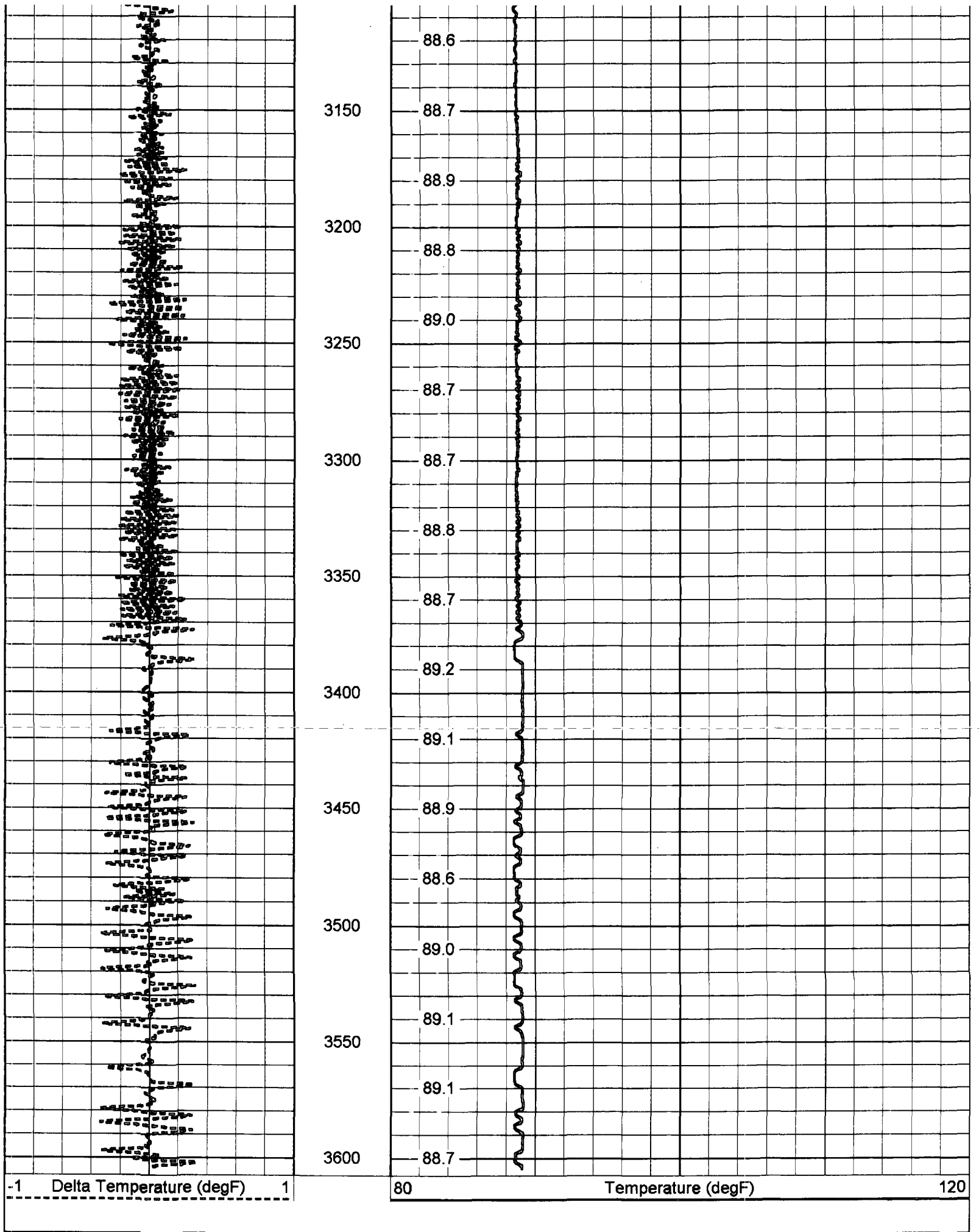
88.3

88.4

88.6

88.6





Temperature Calibration Report

Serial Number: 954  
 Tool Model: RTS  
 Performed: Tue Jun 06 16:26:48 2006

Point #	Reading	Reference
---------	---------	-----------

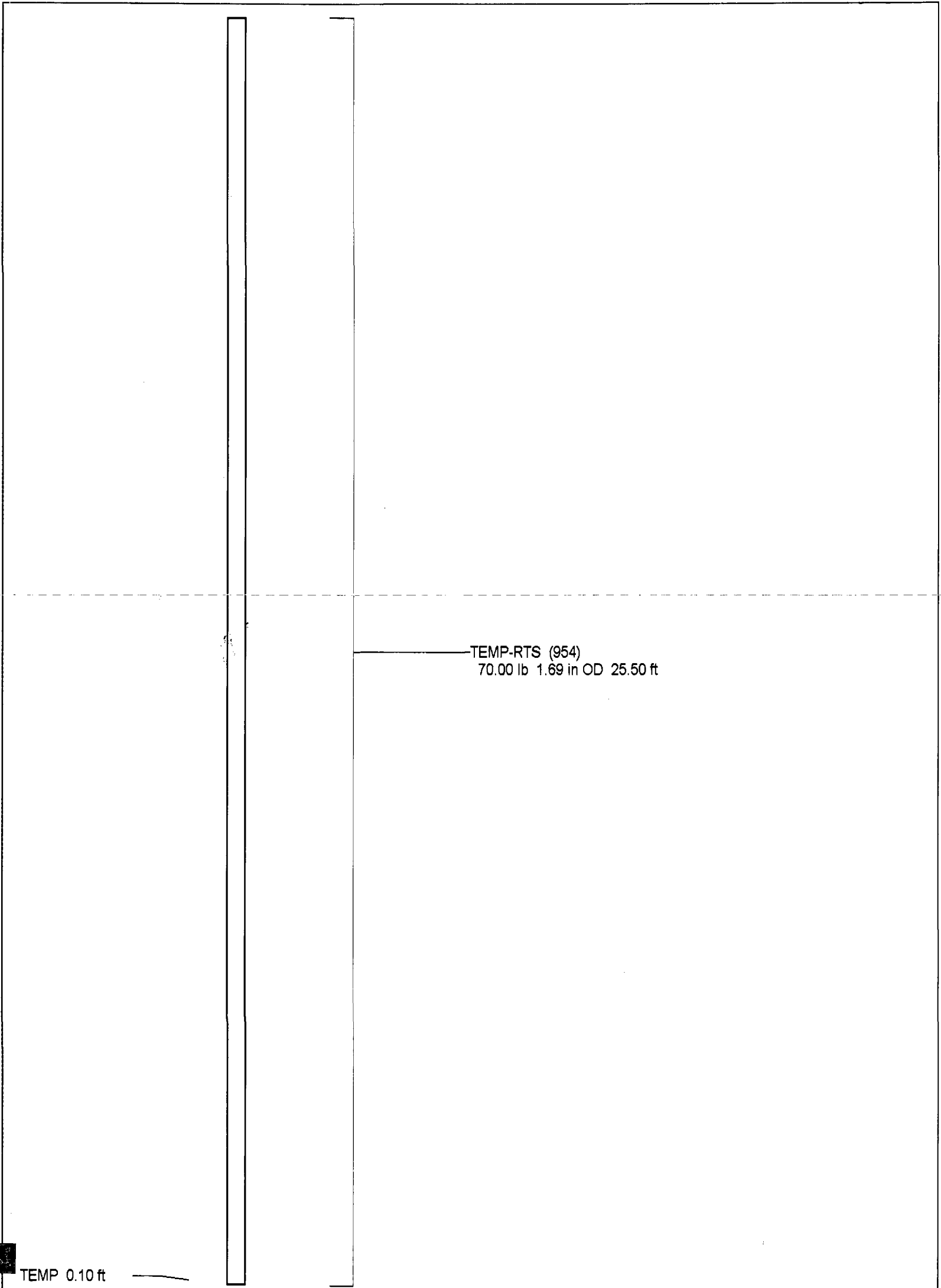
2  
3

865.2  
1553.28

cps  
cps

86  
152

degF  
degF



TEMP-RTS (954)  
70.00 lb 1.69 in OD 25.50 ft

TEMP 0.10 ft



Dataset:	run1/temp
Total Length:	25.50 ft
Total Weight:	70.00 lb
O.D.	1.69 in