



**FLUID RESISTIVITY
/ TEMPERATURE
LOG**

Company **WELL WATER SYSTEMS, INC.**
Well **WINKLER AVENUE ASR WELL**
Field **FT. MYERS**
Country **LEE** State/Prv **FLORIDA**

Location
WINKLER AVENUE STORAGE TANK

**3 1/2" x 5 1/2" ID
DIL/L3/SP
FLOW (S & D)
DHTV (D)**

Permanent Datum	G.L.	Elevation	Elevation
Log Measured From	G.L.		K.B. D.F. G.L.
Drilling Measured From	G.L.		

Company **WELL WATER SYS., INC.**
Well **WINKLER AVE. ASR WELL**
Field **FT. MYERS**
Country **LEE**
State/Prv **FLORIDA**

Date	9-JUNE-99 S		
Run Number	FIVE		
Depth Driller	647'		
Depth Logger	644'		
Bottom Logged Interval	643'		
Top Log Interval	0'		
Open Hole Size	9.625"		
Type Fluid	WATER		
Density / Viscosity	NANA		
Max. Recorded Temp.	86 degF		
Estimated Cement Top	NA		
Time Well Ready	09:00 6-9		
Time Logger on Bottom	12:00 6-9		
Equipment Number	MVGS-1		
Location	FT. MYERS		
Recorded By	MILLER/VINCENT		
Witnessed By	M.SCHILLING/B.NORRIS		
	/D.McNABB		
Borehole Record		Tubing Record	
Run Number	Bit	From	To
ONE	9.625"	SURFACE	121.75'
TWO	28"	SURFACE	94'
THREE	9.625"	91' SCG	554'
FOUR	19"	CSG 91'	457'
Casing Record	Size	Wgt/Ft	Bottom
Surface String	20"	.375"	554'
Prot. String	12" OD	1 1/4" ID	
Production String			
Liner			

<<< Fold Here >>>

All interpretations are opinions based on inferences from electrical or other measurements and we cannot and do not guarantee the accuracy or correctness of any interpretation, and we shall not, except in the case of gross or willful negligence on our part, be liable or responsible for any loss, costs, damages, or expenses incurred or sustained by anyone resulting from any interpretation made by any of our officers, agents or employees. These interpretations are also subject to our general terms and conditions set out in our current Price Schedule.

Comments

FLUID RESISTIVITY/TEMPERATURE data collected logging down.
Well Status: STATIC 6/9/99
Rm=2.44 ohm-m @ 78.5 degF (6/9/99)



MAIN PASS

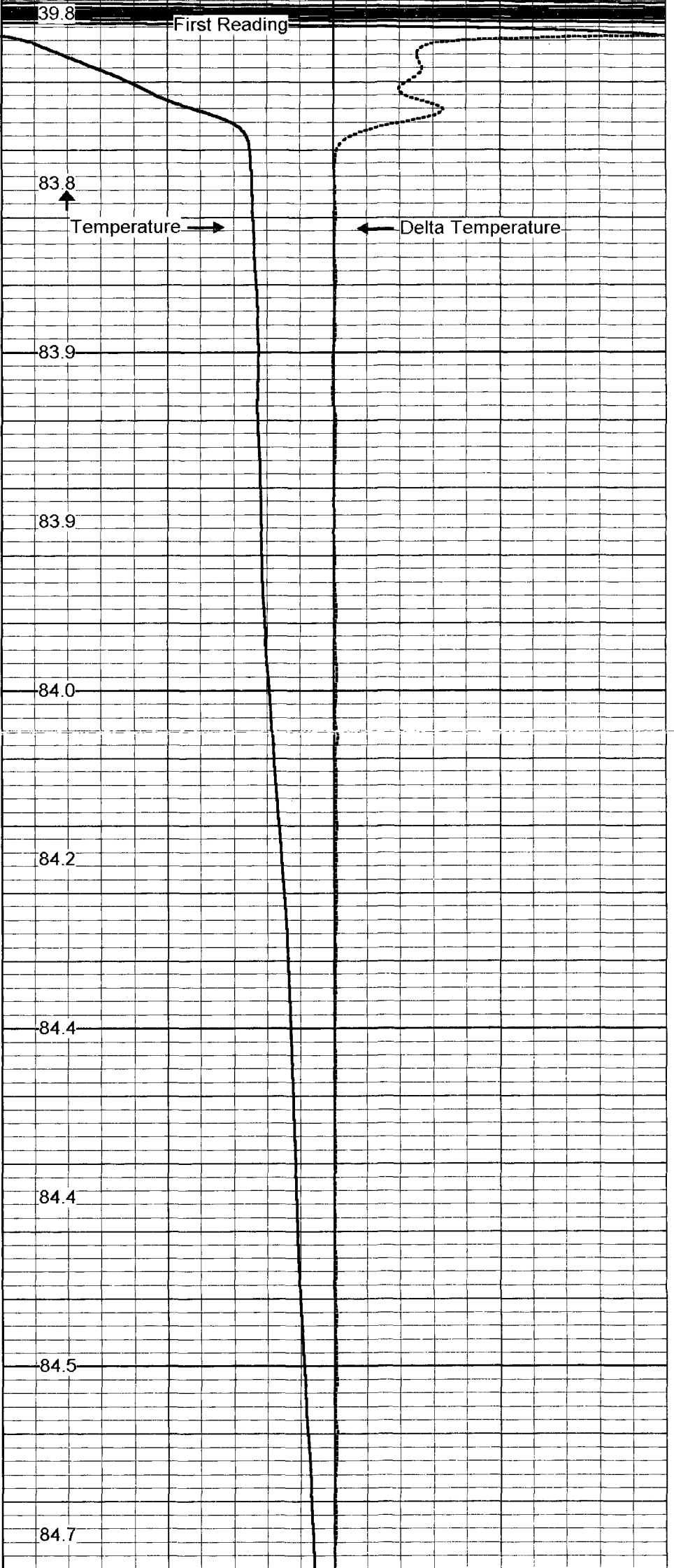
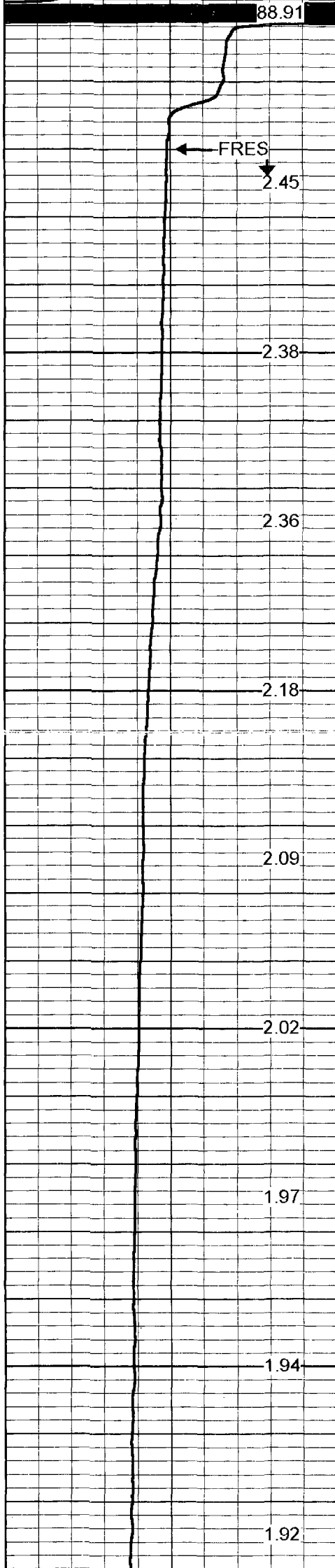
Database File: fitmasr.db
Dataset Pathname: run5/pass1.1
Presentation Format: frttemp.prs
Dataset Creation: Wed Jun 09 14:52:39 1999 by Calc VER_5.3
Charted by: Depth in Feet scaled 1:240

0 F.RESISTIVITY 5

80 TEMP (degF) 90

-1 DTMP (degF) 1

Data collected logging down



FRES

2.45

2.38

2.36

2.18

2.09

2.02

1.97

1.94

1.92

0

100

200

First Reading

83.8

Temperature

83.9

83.9

84.0

84.2

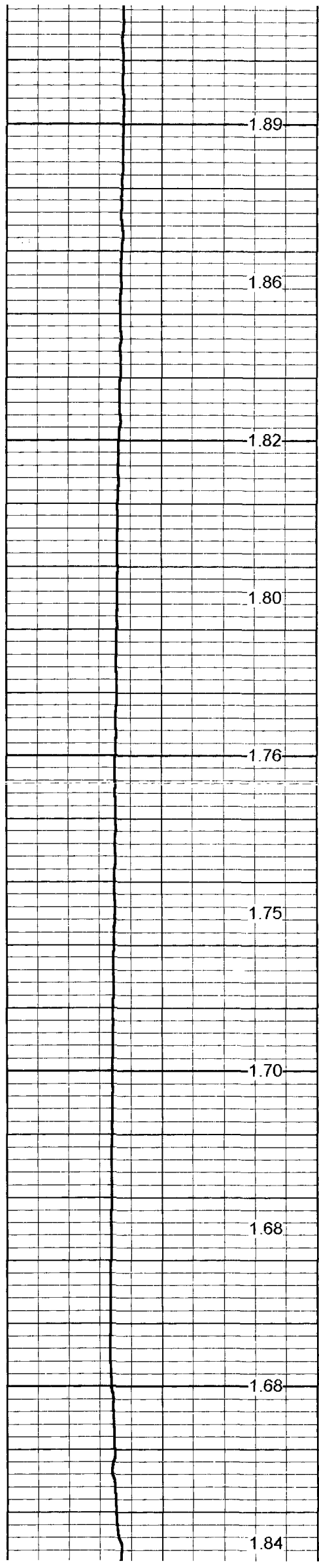
84.4

84.4

84.5

84.7

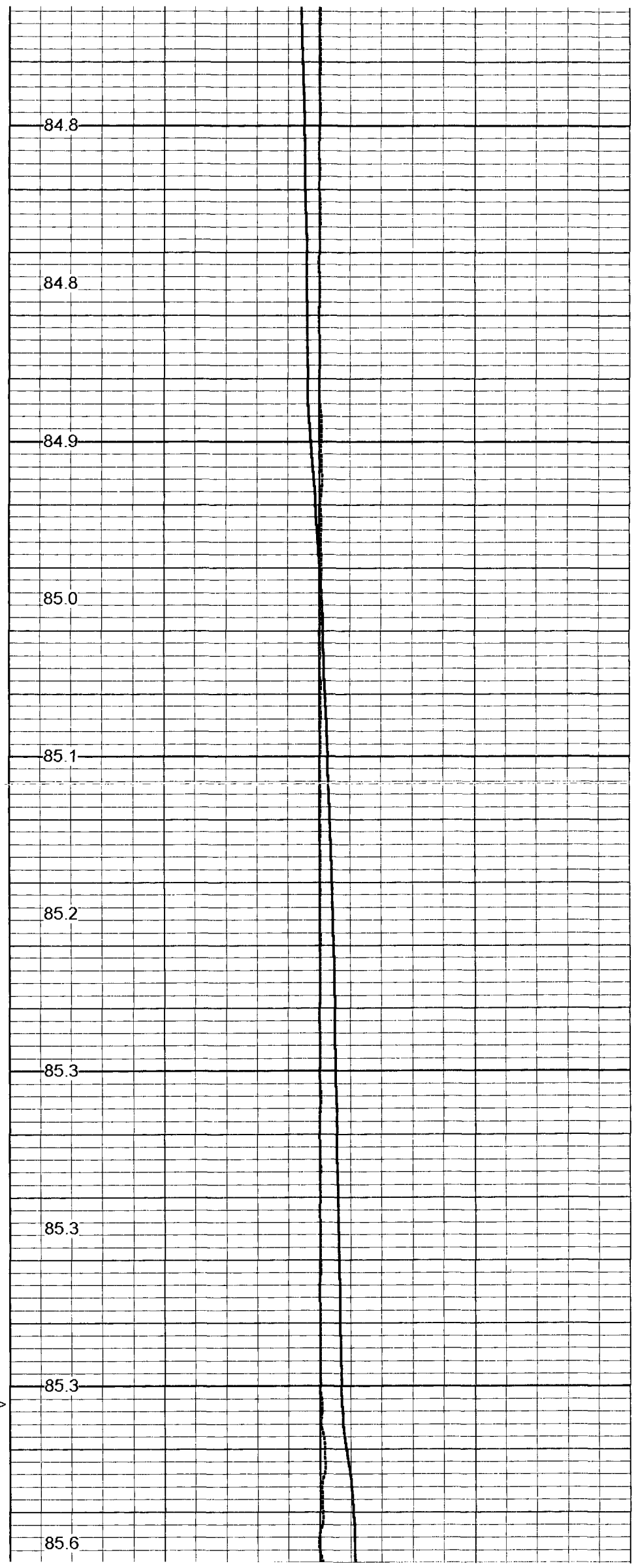
Delta Temperature

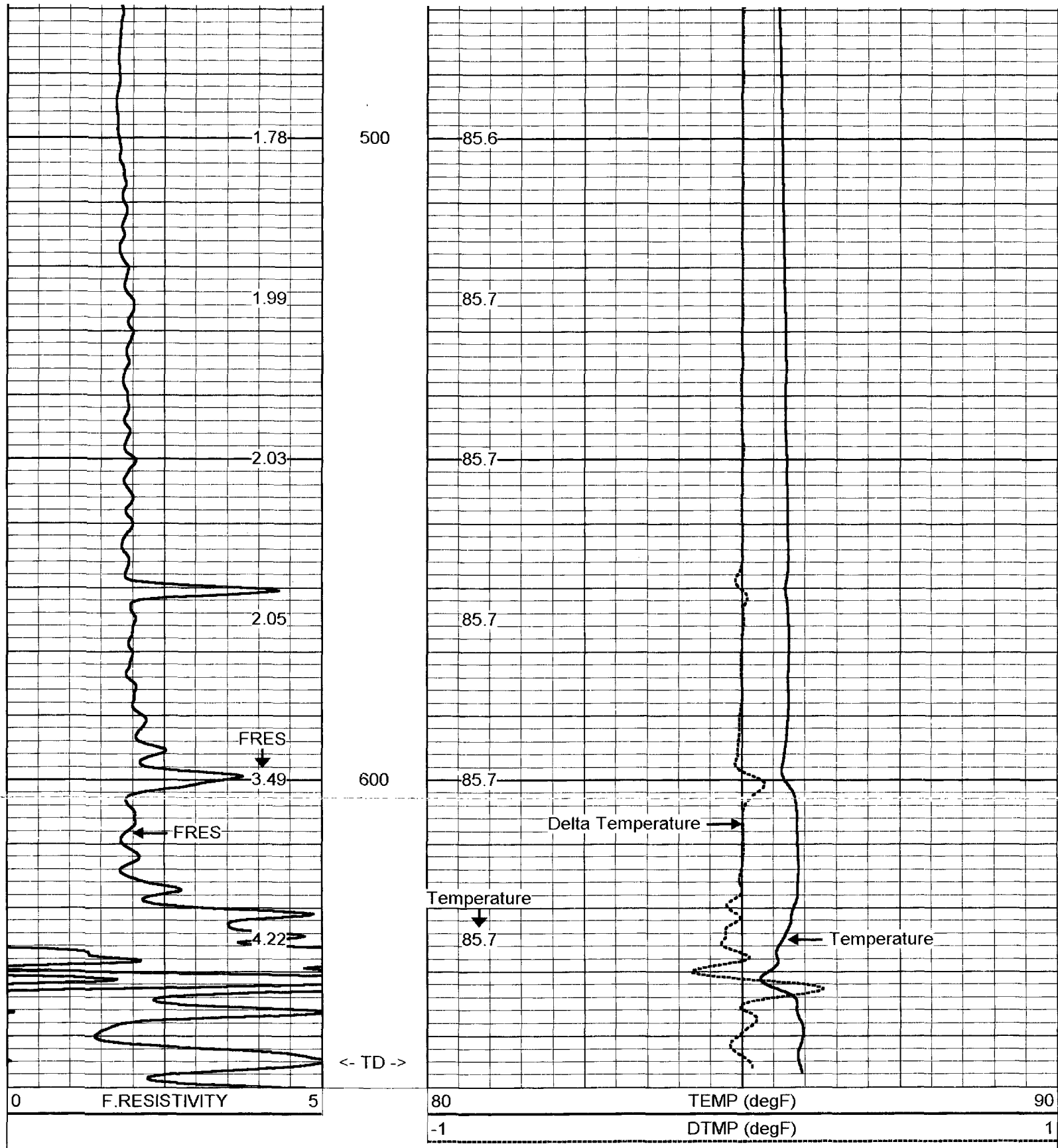


300

400

<- CSG ->

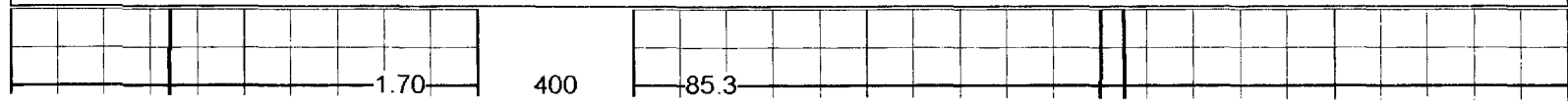
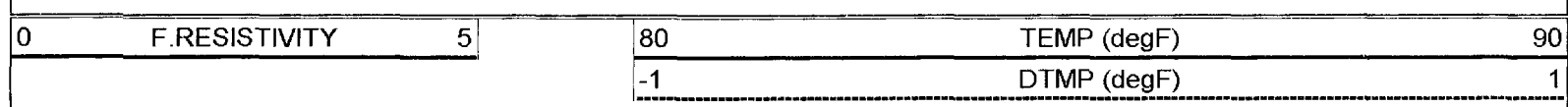




MV Geophysical

MAIN PASS

Database File: ftmasr.db
 Dataset Pathname: run5/pass1.1
 Presentation Format: frttemp.prs
 Dataset Creation: Wed Jun 09 14:52:39 1999 by Calc VER_5.3
 Charted by: Depth in Feet scaled 1:120



1.68

85.3

1.68

85.3

<- CSG ->

1.84

85.6

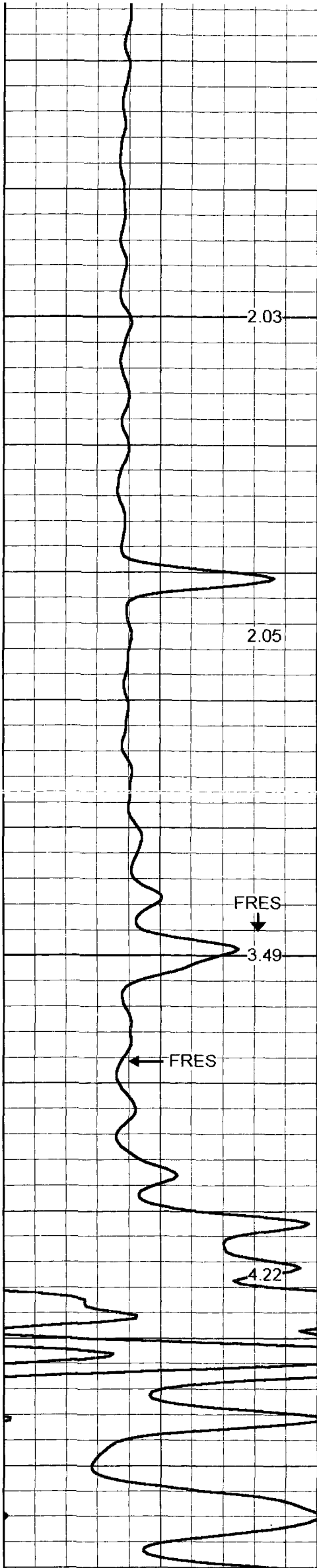
1.78

500

85.6

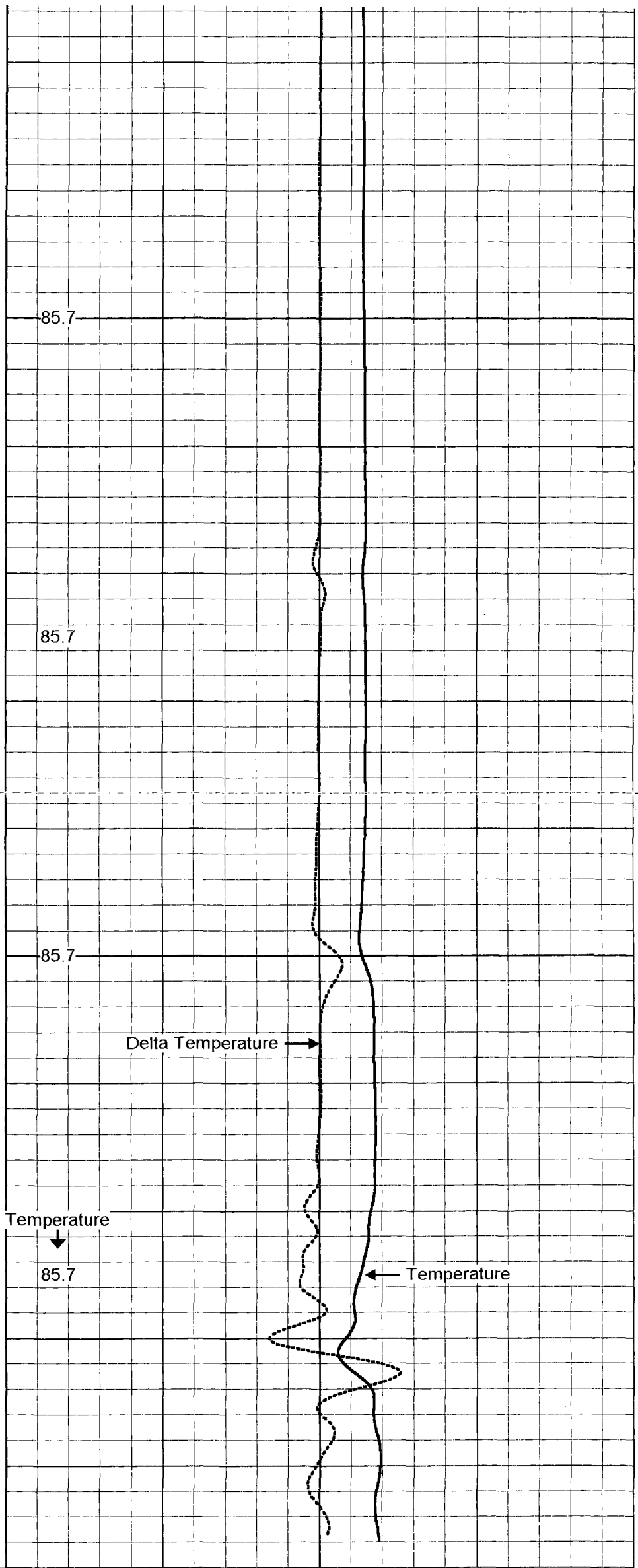
1.99

85.7



600

<- TD ->

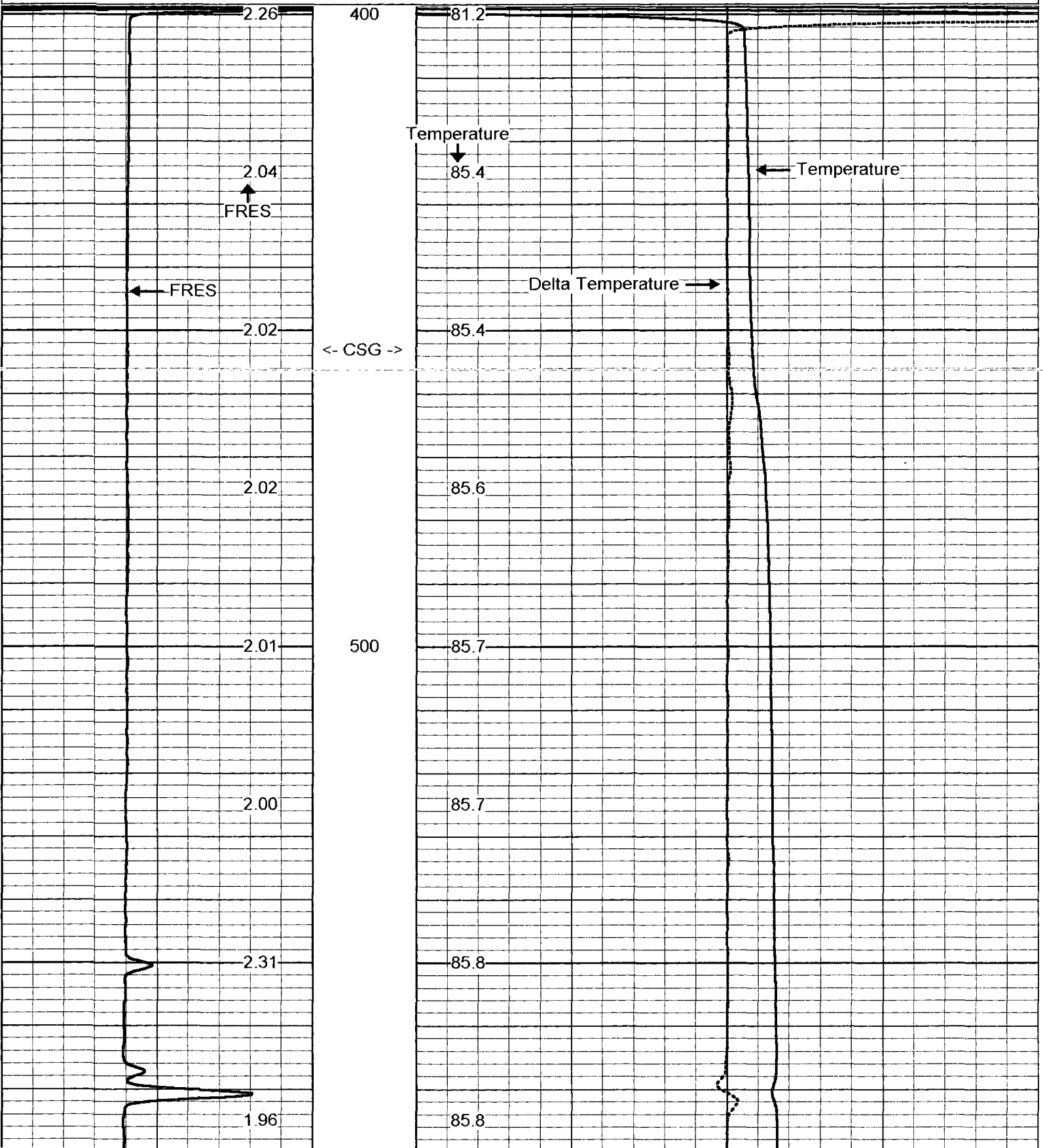


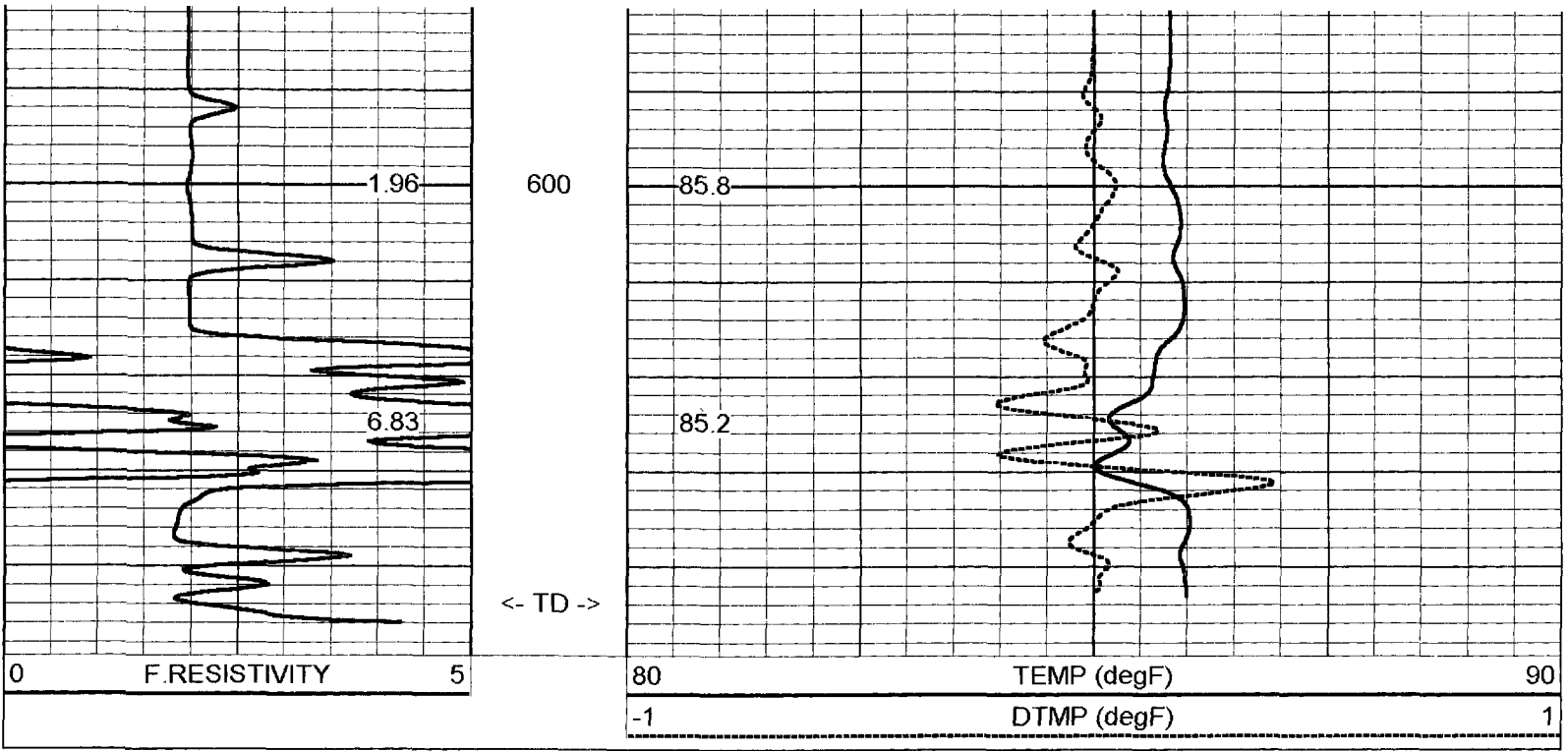


REPEAT SECTION

Database File: ftmasr.db
 Dataset Pathname: run5/pass3.2
 Presentation Format: frttemp.prs
 Dataset Creation: Wed Jun 09 15:08:07 1999 by Calc VER_5.3
 Charted by: Depth in Feet scaled 1:240

0	F.RESISTIVITY	5	80	TEMP (degF)	90
			-1	DTMP (degF)	1





MV
Geophysical

REPEAT SECTION

Database File: ftmasr.db
 Dataset Pathname: run5/pass3.2
 Presentation Format: frttemp.prs
 Dataset Creation: Wed Jun 09 15:08:07 1999 by Calc VER_5.3
 Charted by: Depth in Feet scaled 1:240

