



YOUNGQUIST BROTHERS, Inc

GEOPHYSICAL LOGGING DIVISION

TEMPERATURE RECEIVED LOG

DEC 0 8 2004

Company **WATER RESOURCES**
 Well **DZMW #1 (LM-8100)**
 Field **LCU - PINEWOODS**
 County **LEE**
 State **FLORIDA**

Company **WATER RESOURCE SOLUTIONS**
 Well **DZMW #1 (LM-8100)**
 Field **LCU - PINEWOODS**
 County **LEE**
 State **FLORIDA**

Location **NE NE S25 T46S R25E**
 Permanent Datum **PAD**
 Log Measured From **PAD**
 Drilling Measured From **PAD**
 Elevation **22.75' est**
 Other Services **SEE COMMENTS**
 Elevation **GL. 19'**

Date **NOV 28, 2004**
 Run Number **THREE**
 Depth Driller **1570'**
 Depth Logger **1570'**
 Bottom Logged Interval **1570'**
 Top Log Interval **DRILL PIPE**
 Open Hole Size **12.25"**
 Type Fluid **WATER**
 Density / Viscosity **NA**
 Max. Recorded Temp. **NA**
 Estimated Cement Top **NA**
 Time Well Ready **0600**
 Time Logger on Bolton **0600**
 Equipment Number **103**
 Location **FT. MYERS**
 Recorded By **FERGUSON**
 Witnessed By **J. BAGGETT**
 D. ACQUAVIVA

Borehole Record		Tubing Record					
Run Number	Bit	From	To	Size	Weight	From	To
ONE	26"	CASING	675'				
TWO	12.25"	CASING	1340'				
THREE	12.25"	CASING	1508'				
FOUR	9"	CASING	1570'				


Casing Record
 Surface String **30"** **375' W.T.**
 Prot. String **18"** **375' W.T.**
 Production String
 Liner

<<< Fold Here >>>

All interpretations are opinions based on inferences from electrical or other measurements and we cannot and do not guarantee the accuracy or correctness of any interpretation, and we shall not, except in the case of gross or willful negligence on our part, be liable or responsible for any loss, costs, damages, or expenses incurred or sustained by anyone resulting from any interpretation made by any of our officers, agents or employees. These interpretations are also subject to our general terms and conditions set out in our current Price Schedule.

Comments

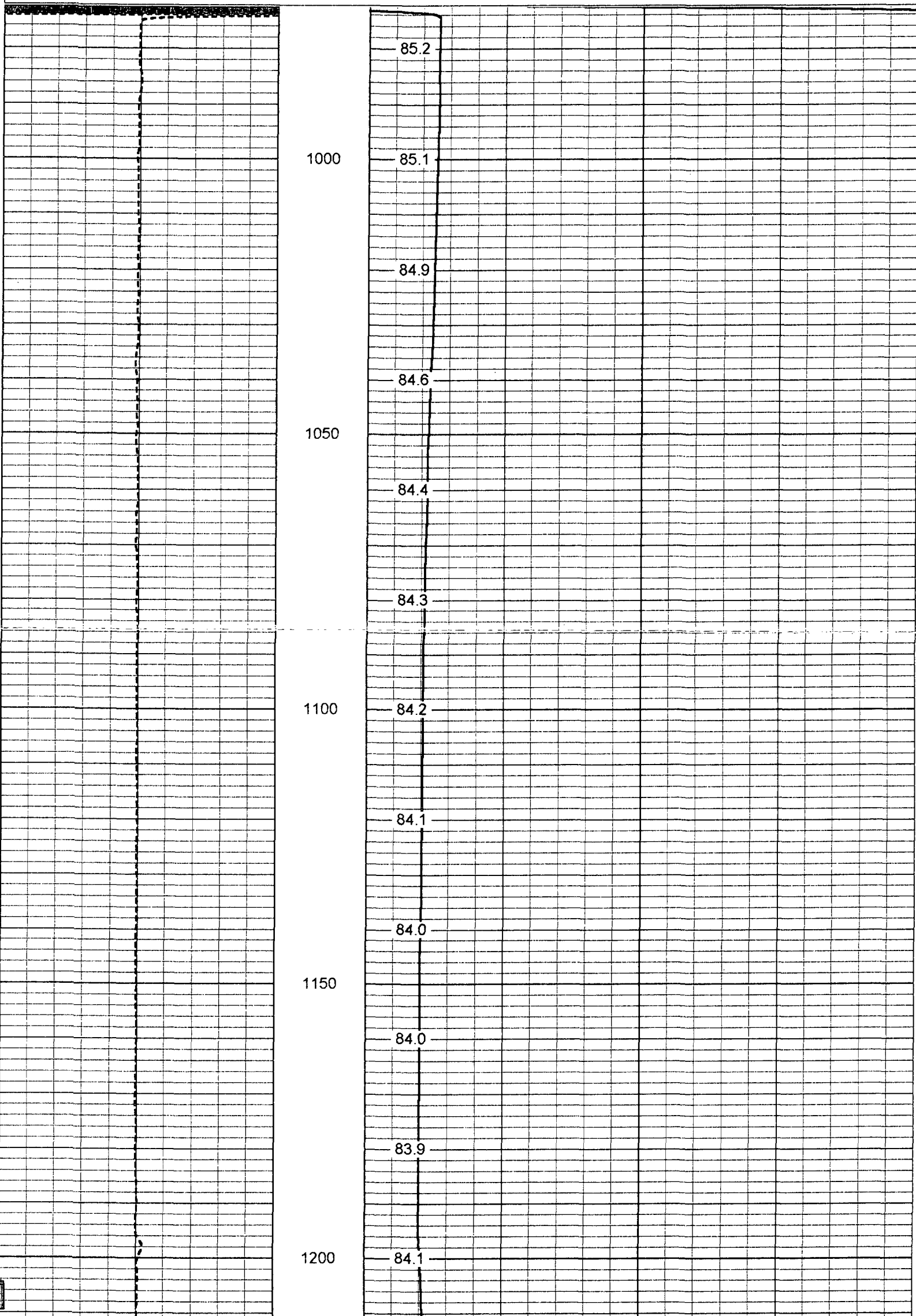
DUAL INDUCTION
 BOREHOLE COMPENSATED SONIC
 X-Y CALIPER
 FLOWMETER

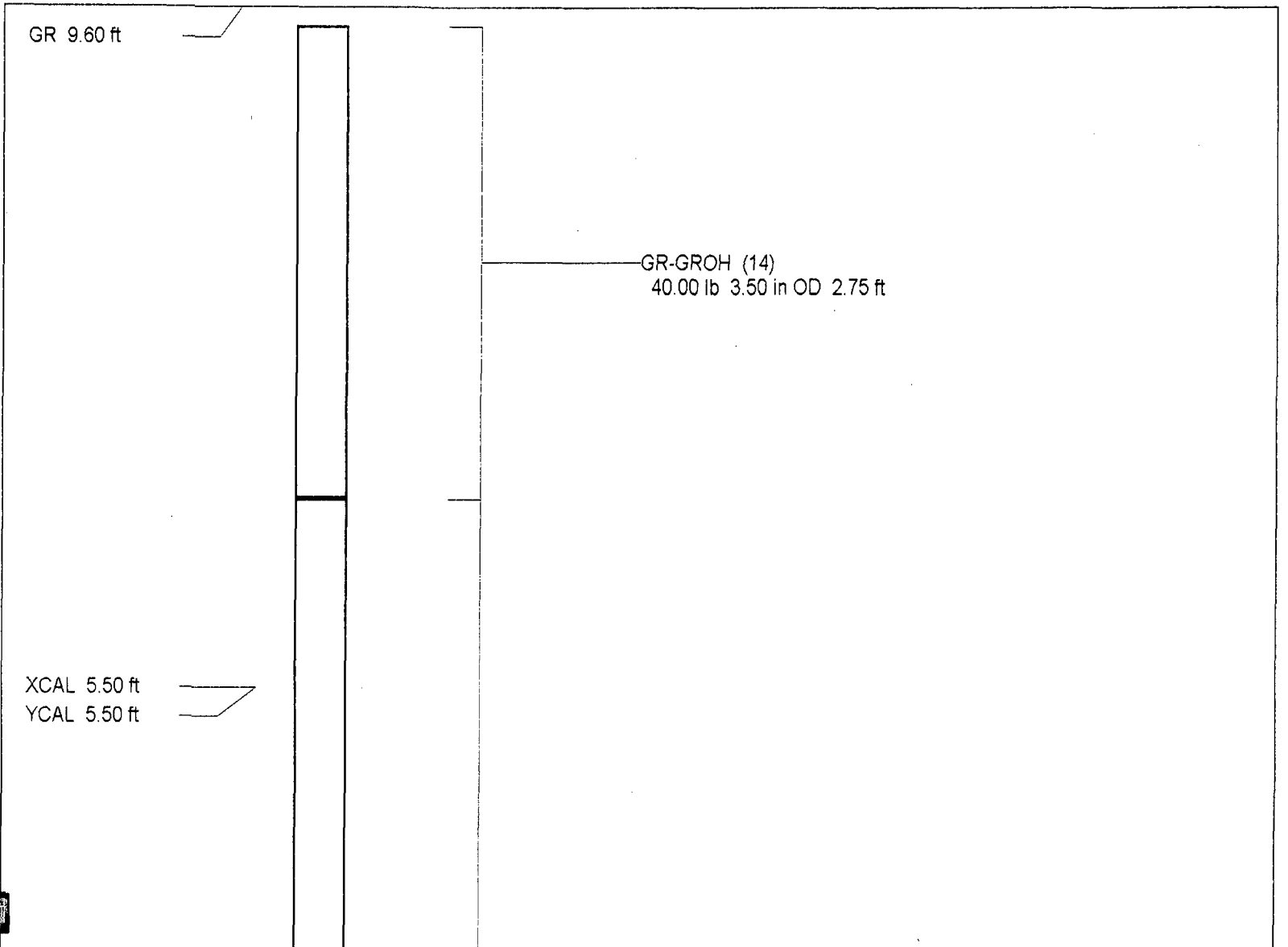
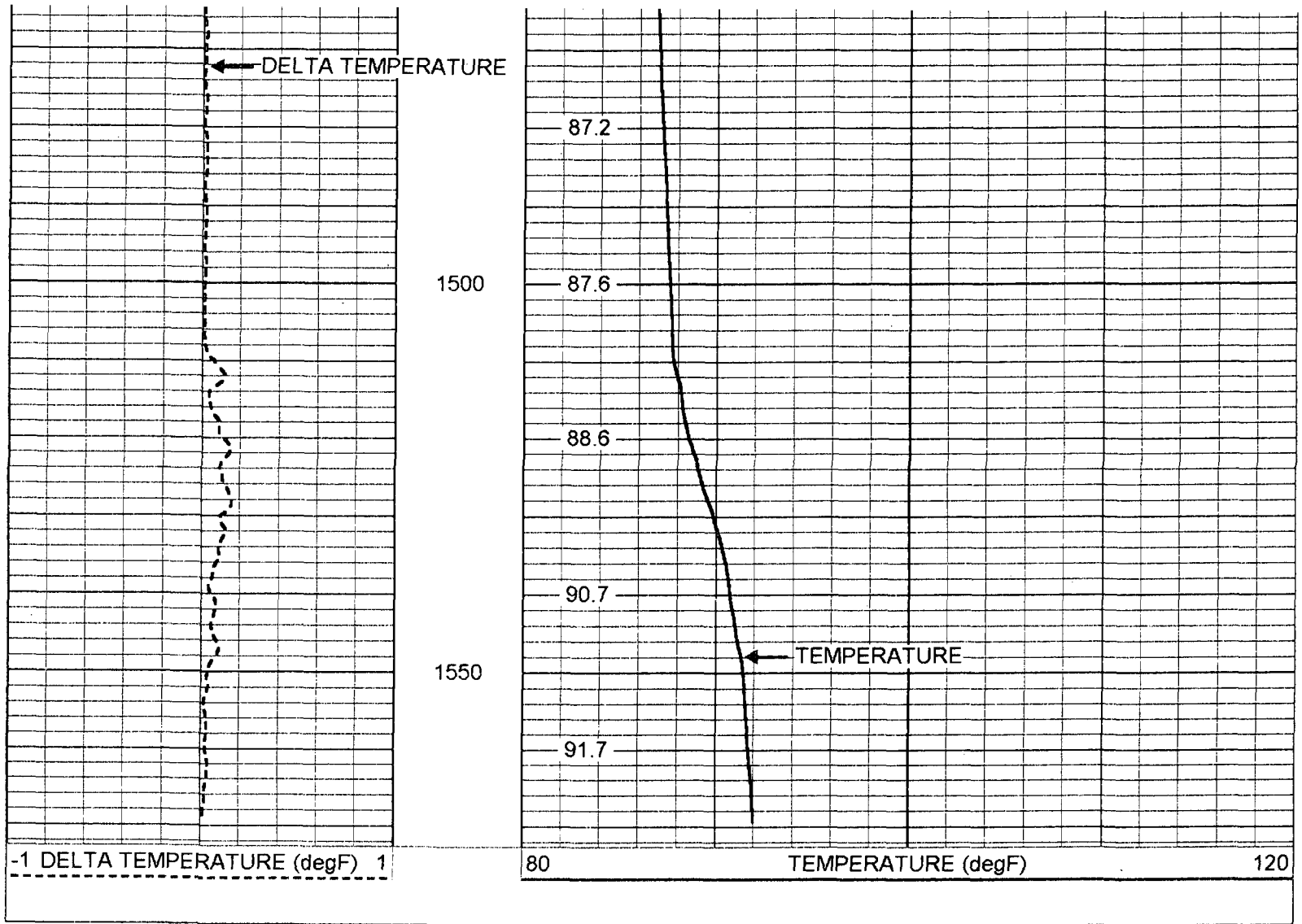


YOUNGQUIST BROTHERS, Inc
 GEOPHYSICAL LOGGING DIVISION

TEMPERATURE

Database File: pwoodmw.db
 Dataset Pathname: run3/pass1
 Presentation Format: temp
 Dataset Creation: Sun Nov 28 06:00:16 2004 by Log 6.2_B4
 Checked by: Depth in Feet scaled 1:240





XYC-XYCSM (06SM)
87.00 lb 3.50 in OD 6.60 ft

Dataset: run3/pass2
Total Length: 9.35 ft
Total Weight: 127.00 lb
O.D.: 3.50 in

Temperature Calibration Report

Serial Number: 17
Tool Model: MLS
Performed: Thu Apr 22 12:56:07 2004

Point #	Reading		Reference	
1	320.1	cps	32	degF
2	700.1	cps	70	degF
3	2000.1	cps	200	degF