



**YOUNGQUIST
BROTHERS, Inc**

GEOPHYSICAL LOGGING DIVISION

**FLUID CONDUCTIVITY
TEMPERATURE
LOG**

*APR 28 2005
C. W. WALTER*

Company **MWH**
Well **DEEP INJECTION WELL #1**
Field **LEE COUNTY - THREE OAKS**
County **LEE**
State **FLORIDA**

Location
Permanent Datum
Log Measured From
Drilling Measured From
Elevation
Other Services
SEE COMMENTS
Elevation
K.B.
D.F.
G.L.

Company **MWH**
Well **DEEP INJECTION WELL #1**
Field **LEE COUNTY - THREE OAKS**
County **LEE**
State **FLORIDA**

Date **FEB. 21, 2005**

Run Number **THREE**

Depth Driller **1830'**

Depth Logger **1810'**

Bottom Logged Interval **1810'**

Top Log Interval **CASING**

Open Hole Size **12.25"**

Type Fluid **WATER**

Density / Viscosity **NA**

Max. Recorded Temp. **104 F**

Estimated Cement Top **NA**

Time Well Ready **1900**

Time Logger on Bottom **2000**

Equipment Number **103**

Location **FT. MYERS**

Recorded By **CATHEY**

Witnessed By **R. WALTER**

Run Number	Bit	Borehole Record		Tubing Record	
		From	To	From	To
ONE	12.25"	SURFACE	510'		
TWO	48.5"	SURFACE	495'		
THREE	12.25"	SURFACE	1830'		

Casing Record	Size	Wd/Ft	Top		Bottom
			From	To	
Surface String	40"	375" W.T.	SURFACE		490'
Prod. String					
Production String					
Liner					

<<< Fold Here >>>

All interpretations are opinions based on inferences from electrical or other measurements and we cannot and do not guarantee the accuracy or correctness of any interpretation, and we shall not, except in the case of gross or willful negligence on our part, be liable or responsible for any loss, costs, damages, or expenses incurred or sustained by anyone resulting from any interpretation made by any of our officers, agents or employees. These interpretations are also subject to our general terms and conditions set out in our current Price Schedule.

Comments

OTHER SERVICES:

FLOWMETER
X-Y CALIPER / GAMMA RAY
DUAL INDUCTION
BOREHOLE TELEVIEWER
SONIC

DYNAMIC FLOWRATE = 300 GPM



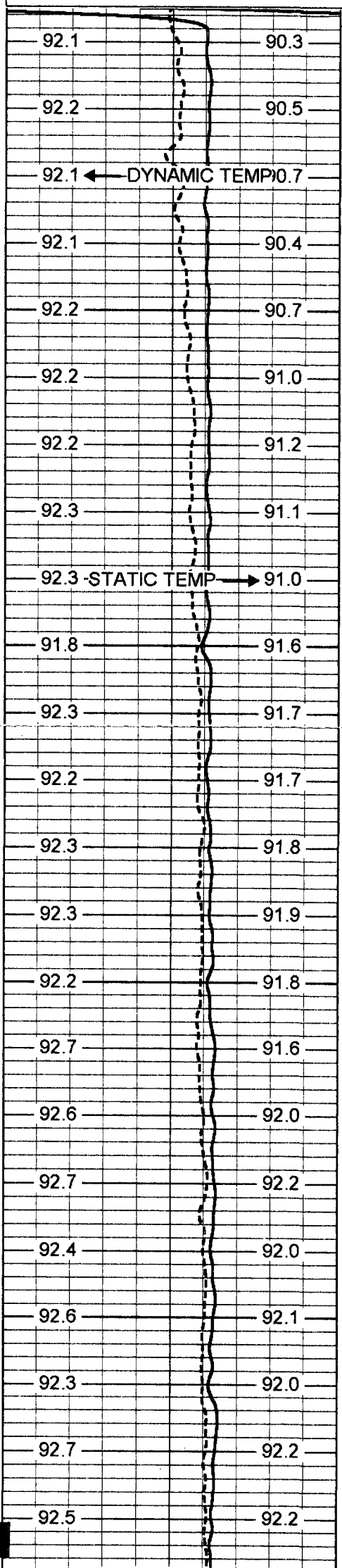
**YOUNGQUIST
BROTHERS, Inc**
GEOPHYSICAL LOGGING DIVISION

MERGED FCT

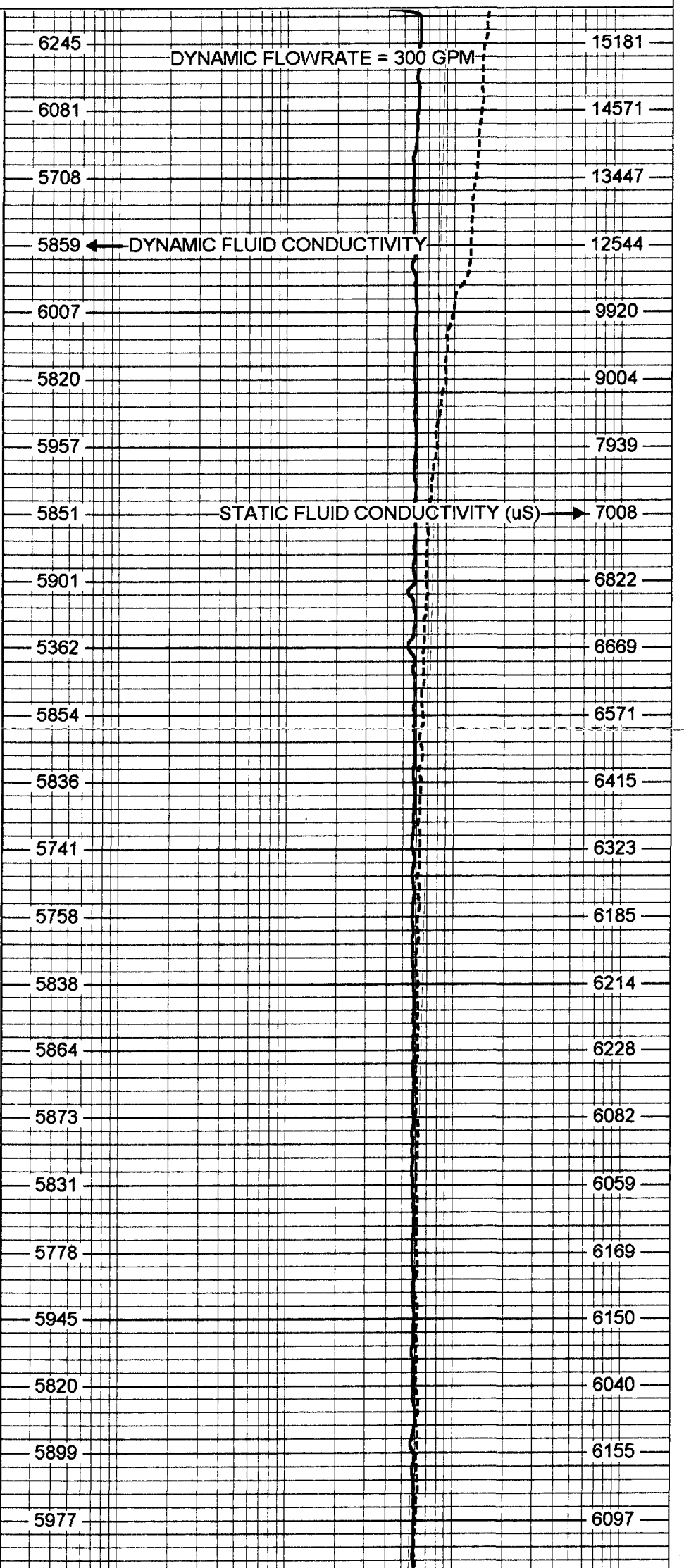
Database File: 3oaksiw1.db
Dataset Pathname: run3/pass11
Presentation Format: frt_mg
Dataset Creation: Tue Feb 22 07:44:16 2005 by Log 6.2_B4

80	DYNAMIC TEMP (degF)	100
80	STATIC TEMP (degF)	100

20	DYNAMIC FLUID CONDUCTIVITY (uS)	200000
20	STATIC FLUID CONDUCTIVITY (uS)	200000



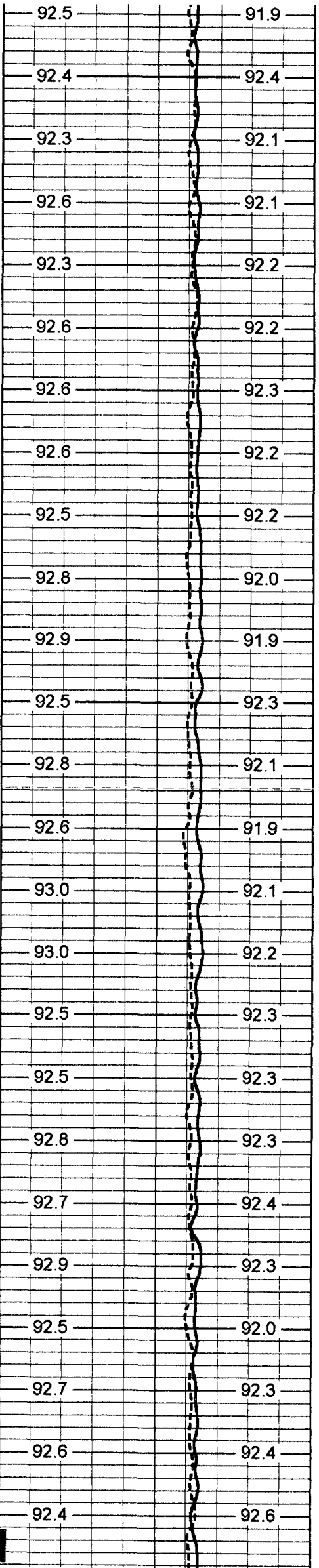
500
550
600
650



DYNAMIC FLOWRATE = 300 GPM

DYNAMIC FLUID CONDUCTIVITY

STATIC FLUID CONDUCTIVITY (uS)



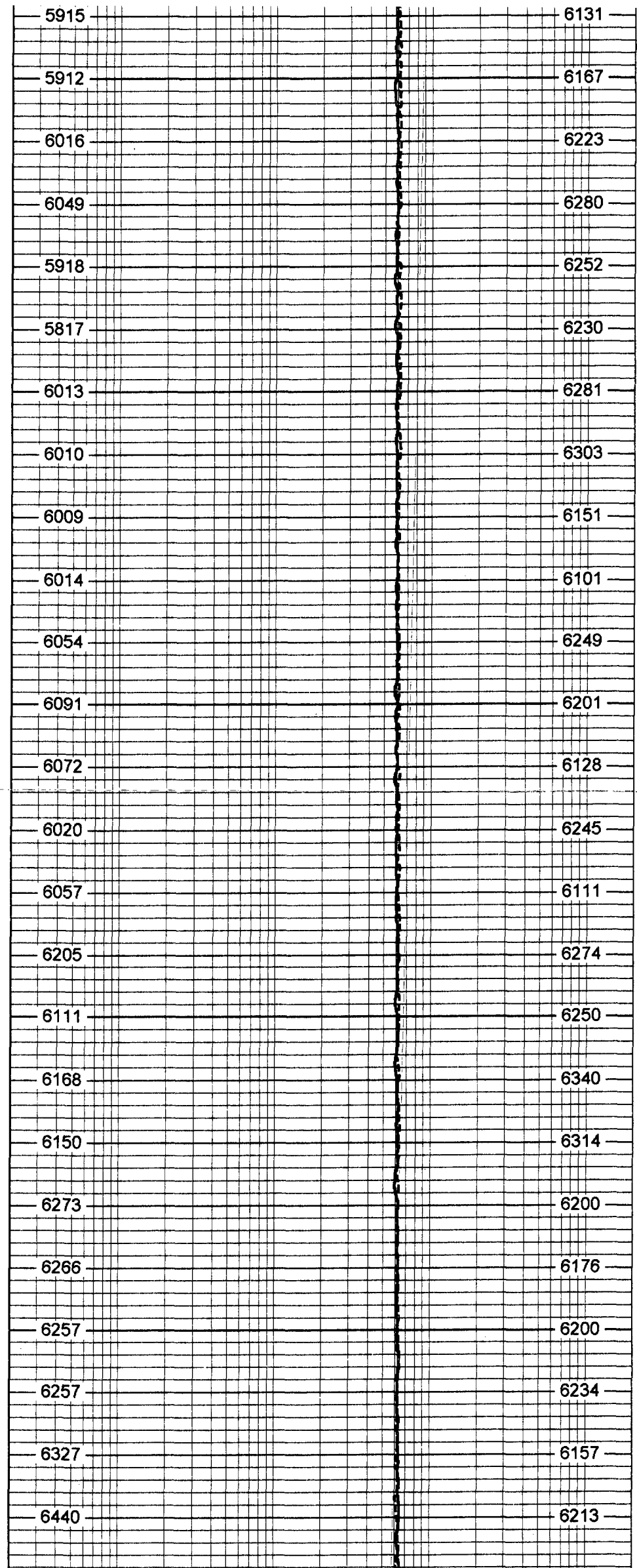
700

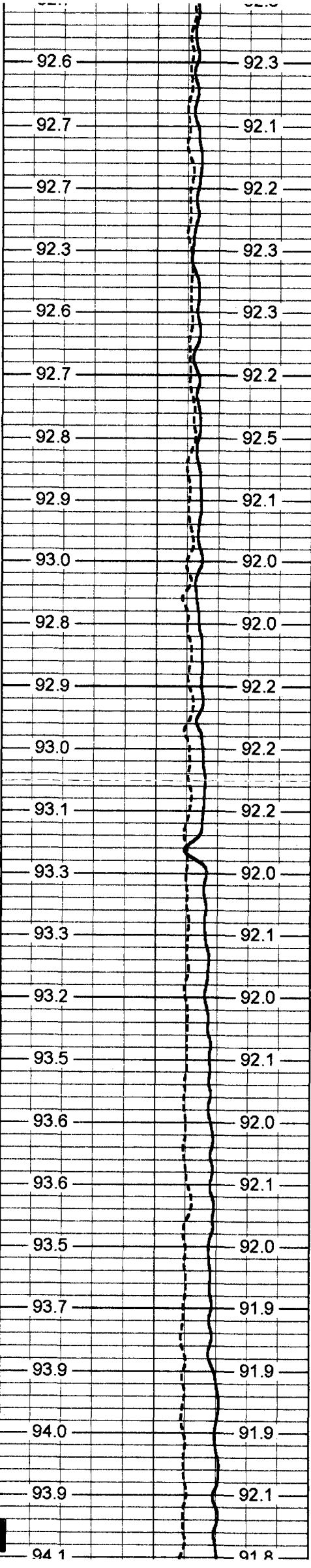
750

800

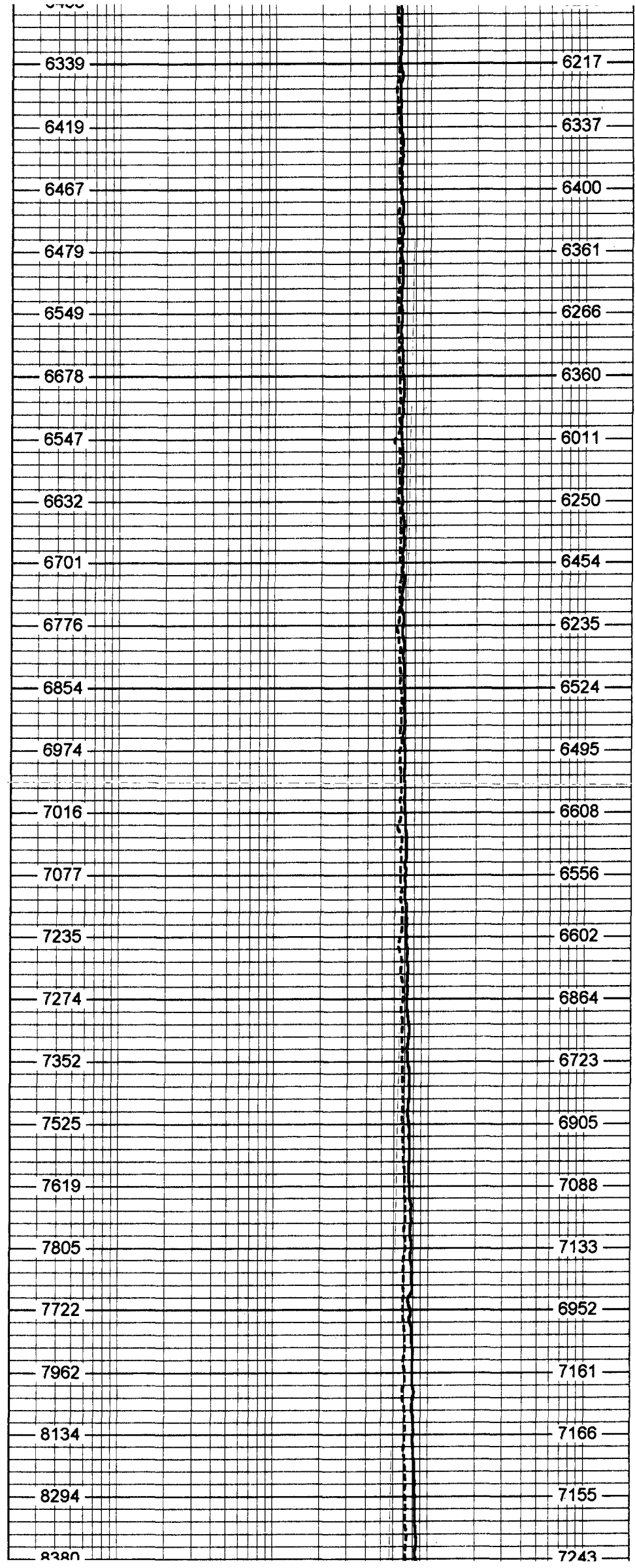
850

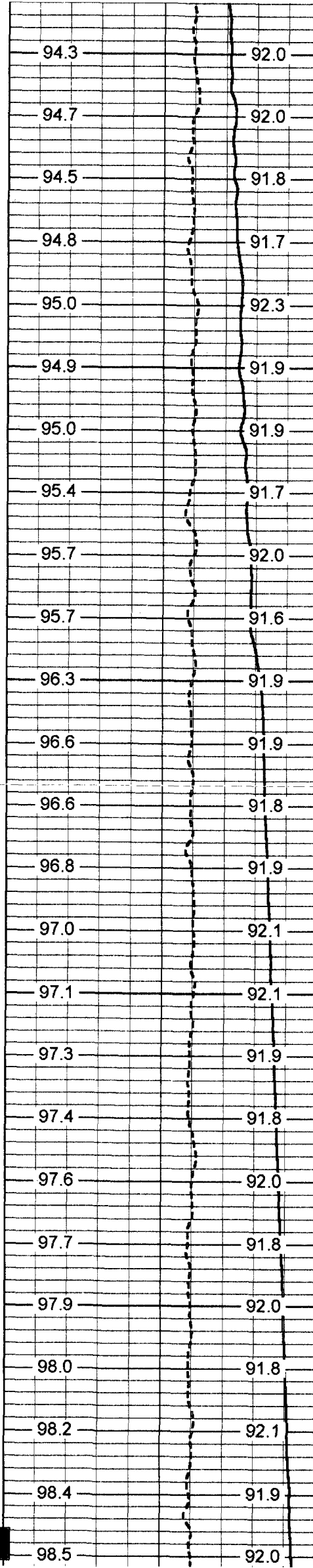
900



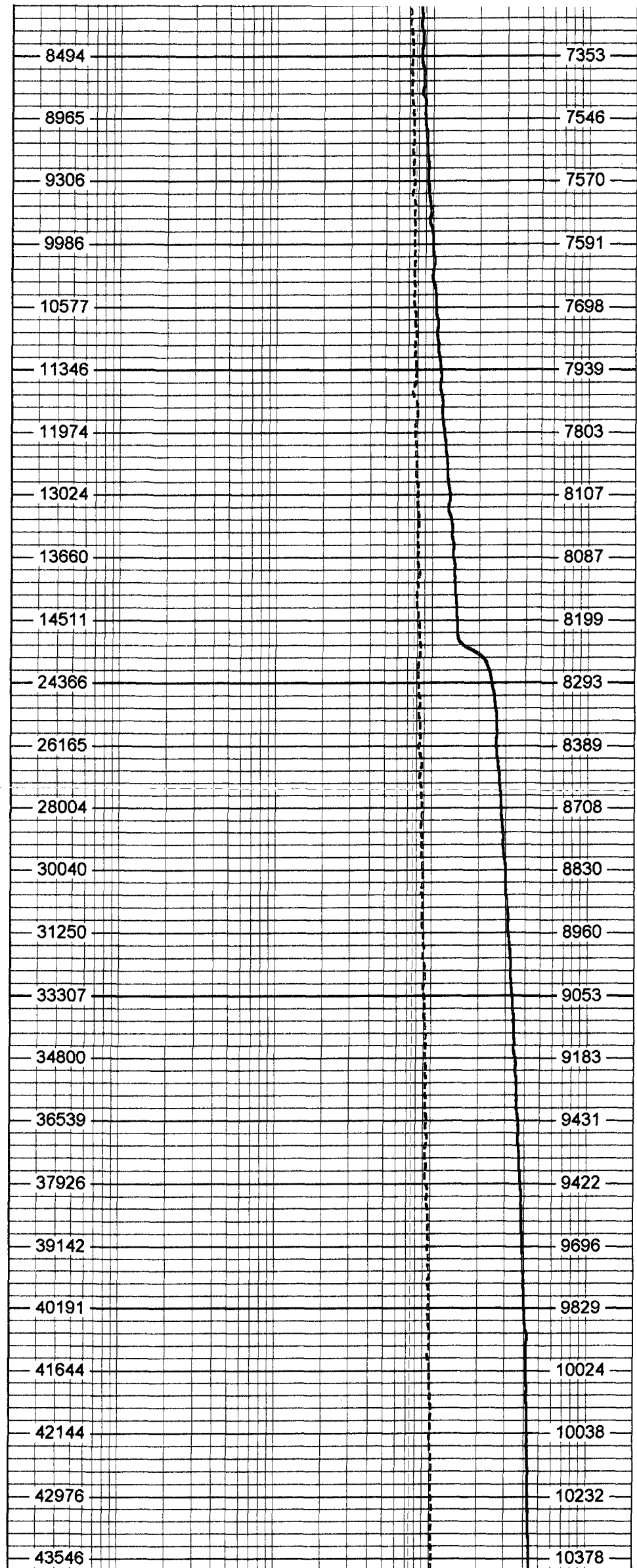


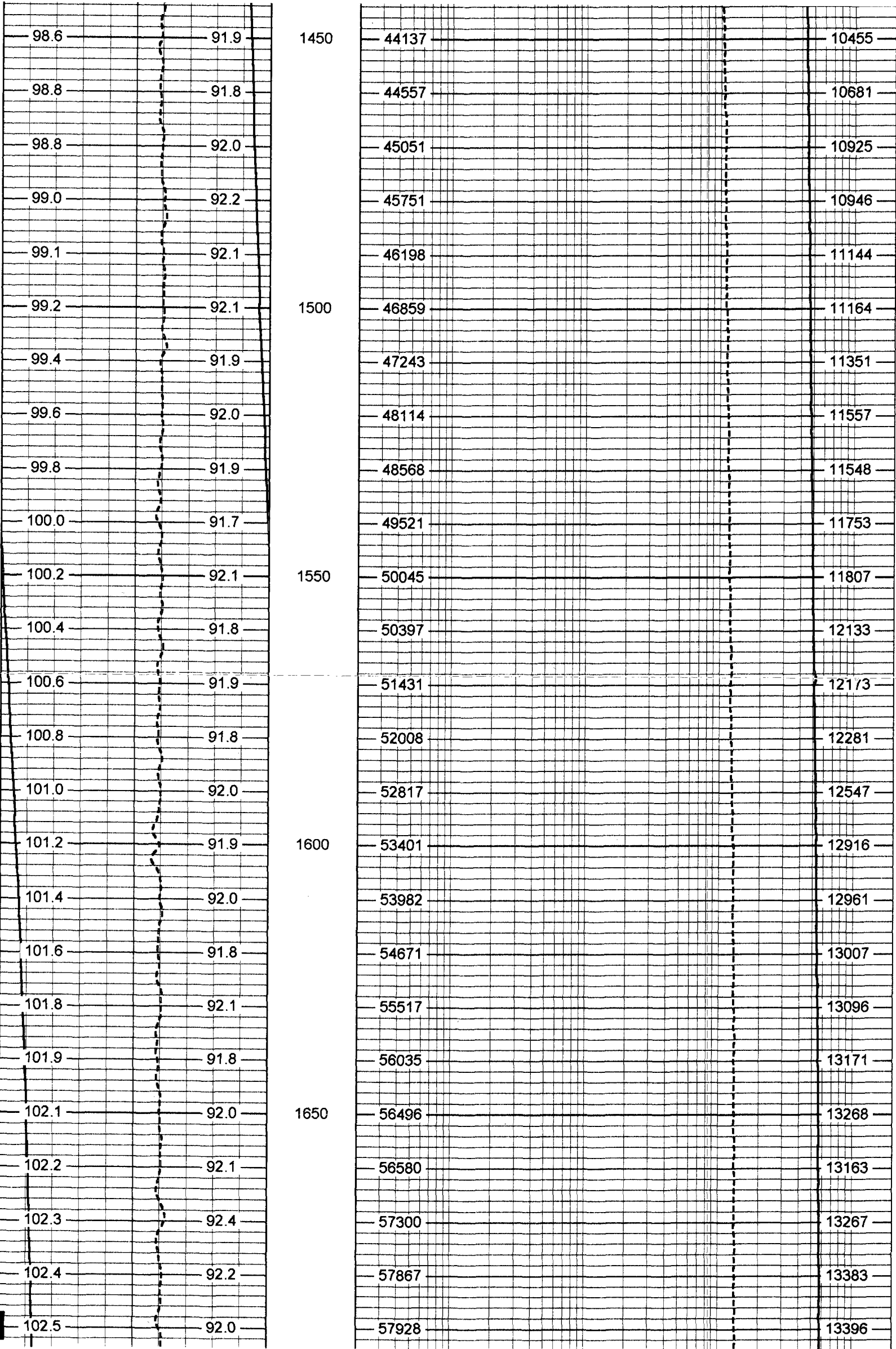
950
1000
1050
1100
1150

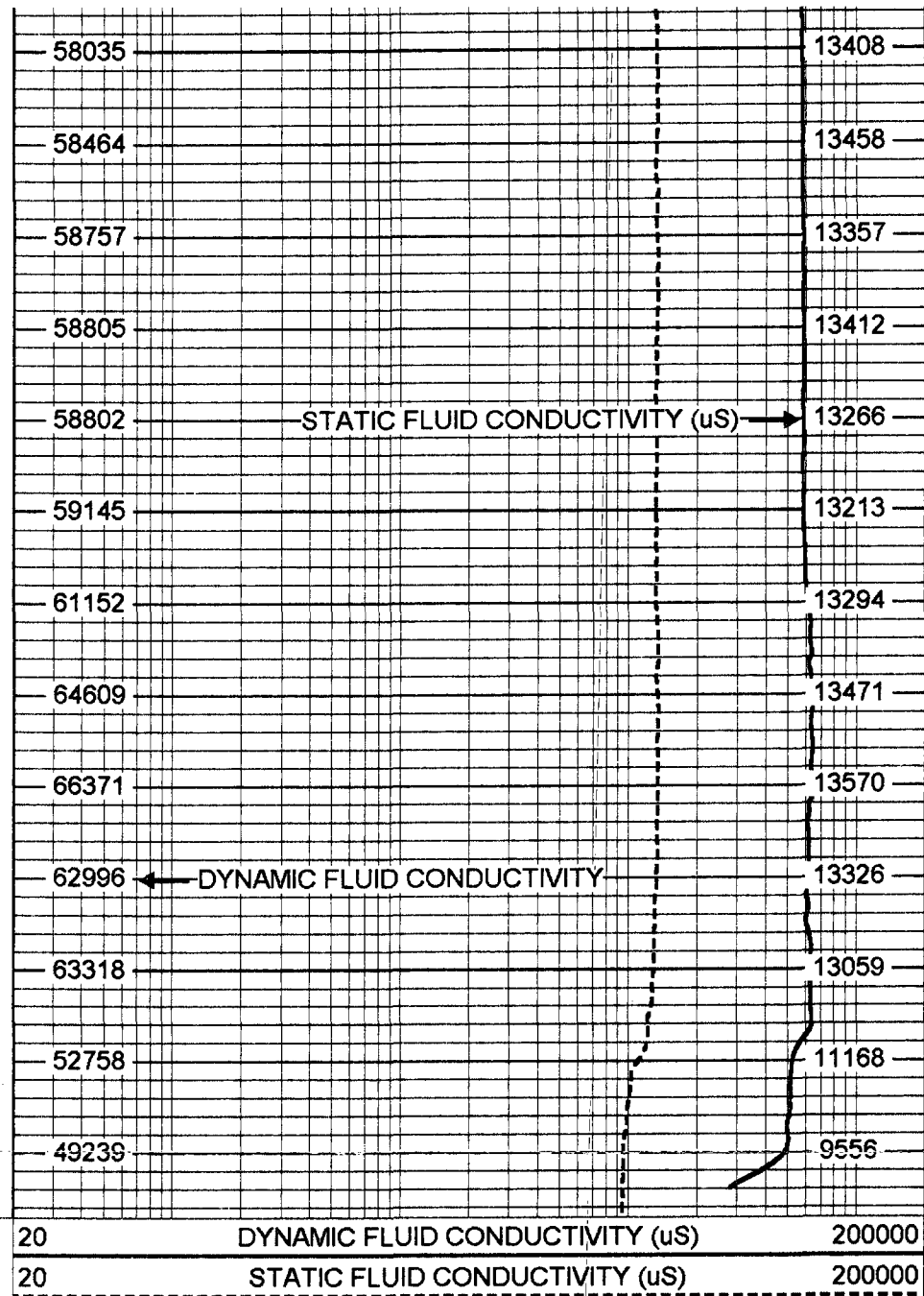
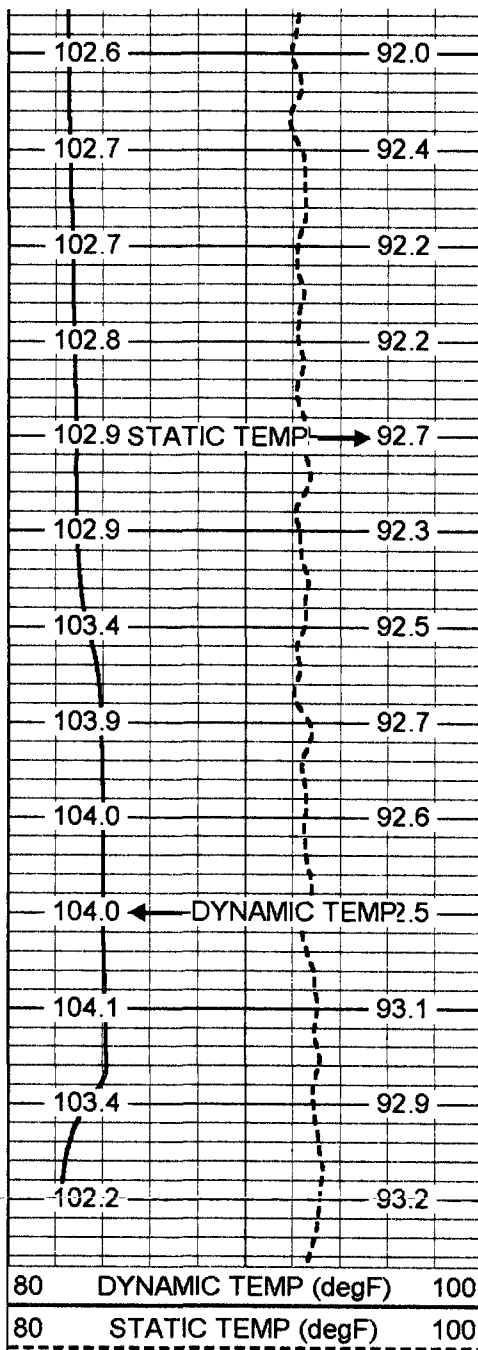




1200
1250
1300
1350
1400







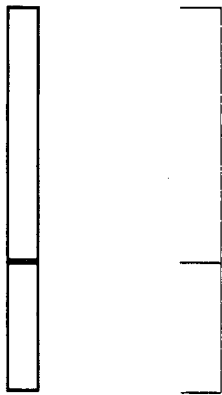
80 DYNAMIC TEMP (degF) 100
 80 STATIC TEMP (degF) 100

20 DYNAMIC FLUID CONDUCTIVITY (uS) 200000
 20 STATIC FLUID CONDUCTIVITY (uS) 200000

FRT Calibration Report			
Serial Number:		31	
Tool Model:		SONDEX	
Performed:		Thu Apr 22 09:03:45 2004	
Point #	Reading		Reference
1	30.817	cps	1000.000
2	171.328	cps	10000.000
3	445.517	cps	25000.000
4	965.867	cps	50000.000
5		cps	
6		cps	

Temperature Calibration Report				
Serial Number:		31		
Tool Model:		SONDEX		
Performed:		Thu Apr 22 09:31:10 2004		
Point #	Reading		Reference	
1	128.595	cps	41	degF
2	265.557	cps	70	degF
3	697.393	cps	156	degF

TEMP 0.70 ft
FRES 0.50 ft



TEMP-SONDEX (31)
10.00 lb 1.62 in OD 1.20 ft

FRT-SONDEX (31)
10.00 lb 1.69 in OD 0.60 ft

Dataset: run3/pass11
Total Length: 1.80 ft
Total Weight: 20.00 lb
O.D.: 1.69 in