



YOUNGQUIST BROTHERS, Inc
GEOPHYSICAL LOGGING DIVISION

FLUID CONDUCTIVITY TEMPERATURE LOG

Company MWH
Well DZMW-1
Field LEE COUNTY - THREE OAKS
County LEE
State FLORIDA

Company MWH
Well DZMW-1
Field LEE COUNTY - THREE OAKS
County LEE
State FLORIDA

Entered into South District

Aug 28 2005
District

Permanent Datum Log Measured From PAD
Drilling Measured From PAD

Location
Elevation

Other Services
SEE COMMENTS
Elevation

Date	29-JUNE-2005	
Run Number	THREE	
Depth Driller	1610'	
Depth Logger	1610'	
Bottom Logged Interval	1610'	
Top Log Interval	CASING	
Open Hole Size	12.25"	
Type Fluid	WATER	
Density / Viscosity	NA	
Max Recorded Temp.	104 F	
Estimated Cement Top	NA	
Time Well Ready	1600	
Time Logger on Bottom	1630	
Equipment Number	103	
Location	FT. MYERS	
Recorded By	CATHY	
Witnessed By	G. YOUNG	

Borehole Record		Tubing Record	
Run Number	Bit	From	To
ONE	12.25"	SURFACE	505'
TWO	32.25"	SURFACE	497'
THREE	12.25"	SURFACE	1610'

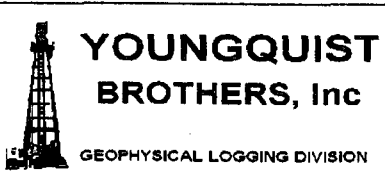
Casing Record	Size	Wgt/Ft	Top	Bottom
Surface String	24"	37.5" W.T.	SURFACE	490'
Prod. String				
Production String				
Liner				

<<< Fold Here >>>

All interpretations are opinions based on inferences from electrical or other measurements and we cannot and do not guarantee the accuracy or correctness of any interpretation, and we shall not, except in the case of gross or willful negligence on our part, be liable or responsible for any loss, costs, damages, or expenses incurred or sustained by anyone resulting from any interpretation made by any of our officers, agents or employees. These interpretations are also subject to our general terms and conditions set out in our current Price Schedule.

Comments

OTHER SERVICES:
DUAL INDUCTION
SONIC
X-Y CALIPER / GAMMA RAY
FLOWMETER
BOREHOLE TELEVIEWER

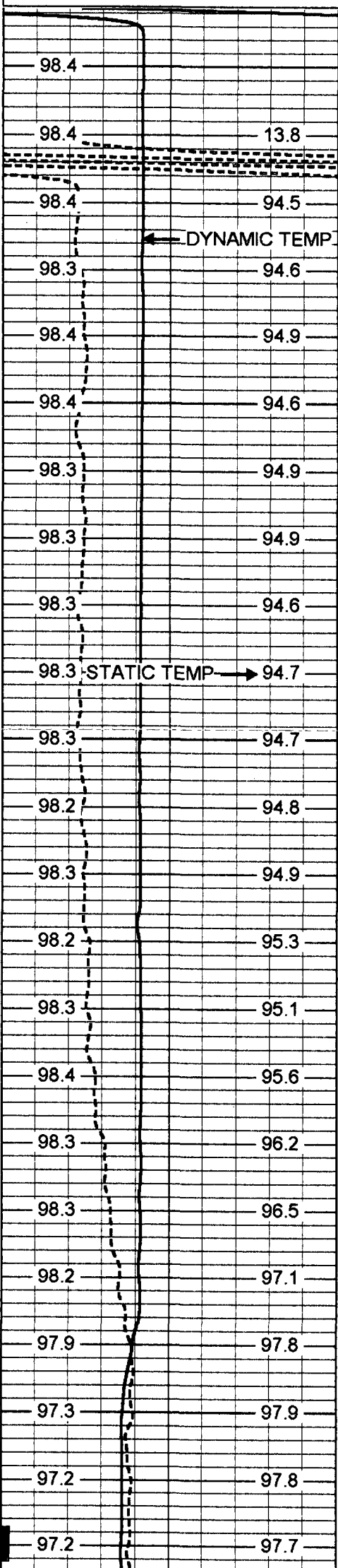


MERGED FCT

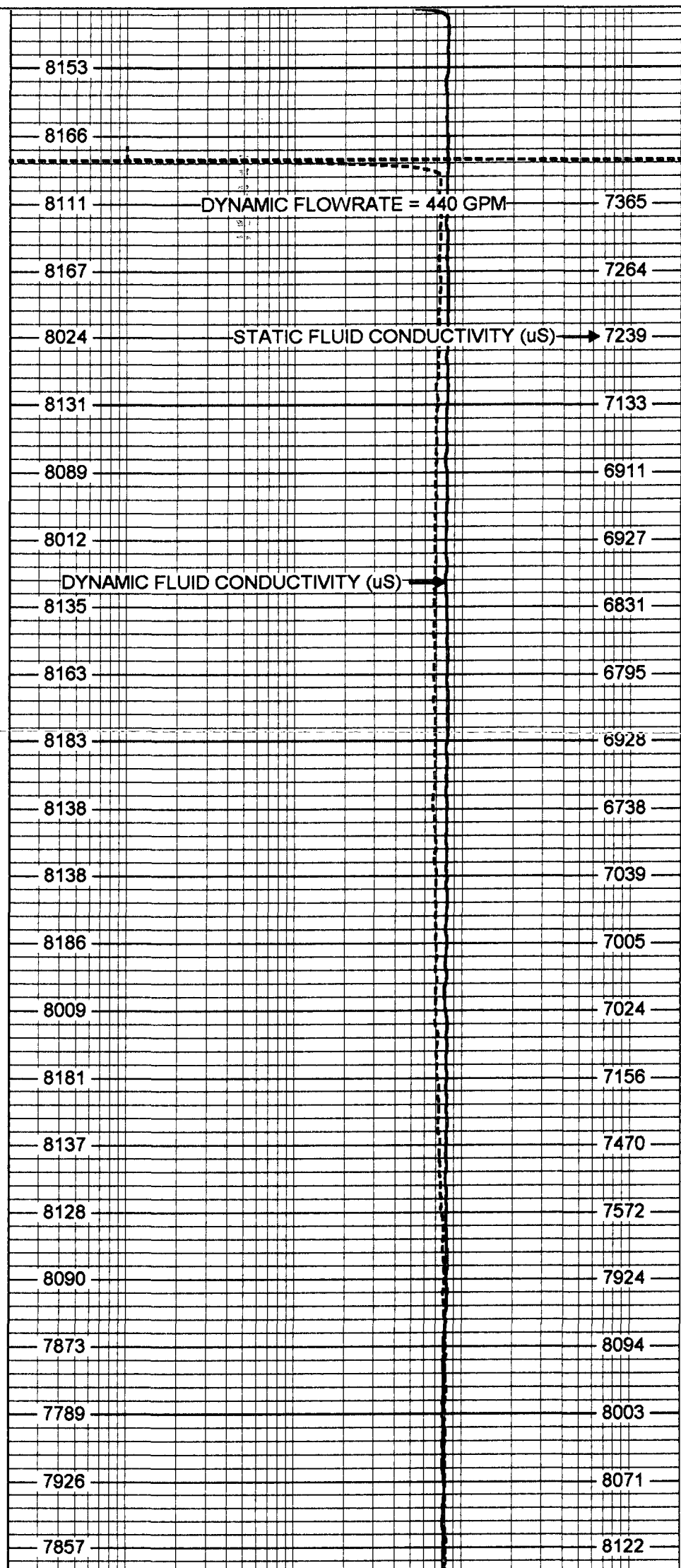
Database File: 3oaksmw.db
Dataset Pathname: run3/pass11
Presentation Format: frt_mg
Dataset Creation: Thu Jun 30 02:45:01 2005 by Log 6.2_B4

90 DYNAMIC TEMP (degF) 110
 90 STATIC TEMP (degF) 110

20 DYNAMIC FLUID CONDUCTIVITY (uS) 200000
 20 STATIC FLUID CONDUCTIVITY (uS) 200000



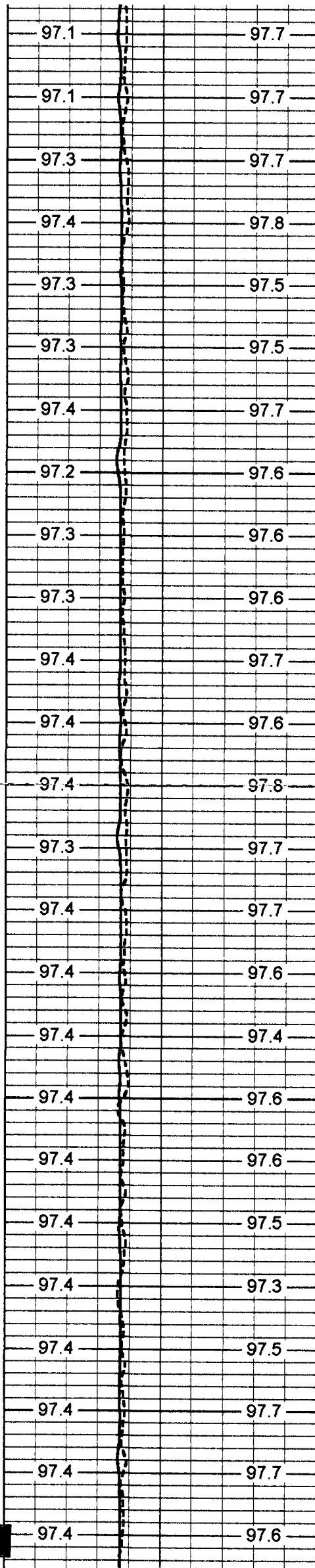
450
500
550
600
650



DYNAMIC FLOWRATE = 440 GPM

STATIC FLUID CONDUCTIVITY (uS)

DYNAMIC FLUID CONDUCTIVITY (uS)



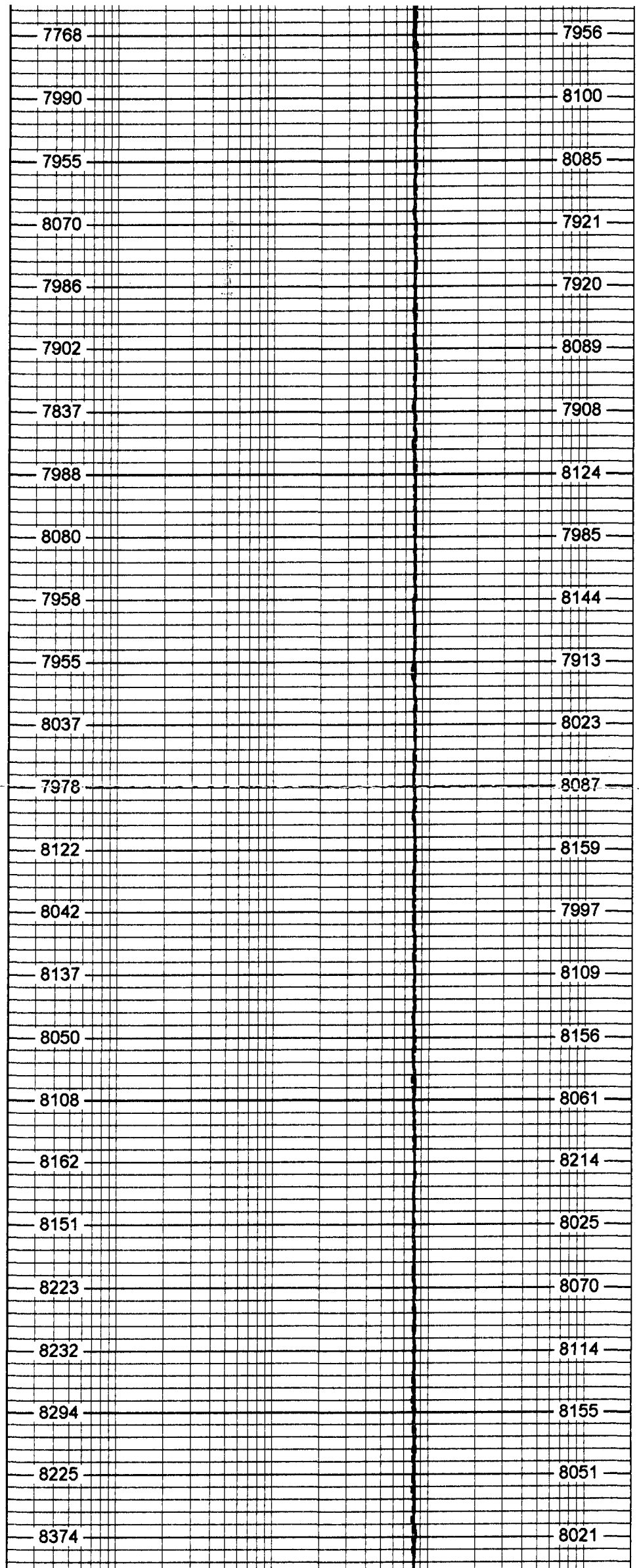
700

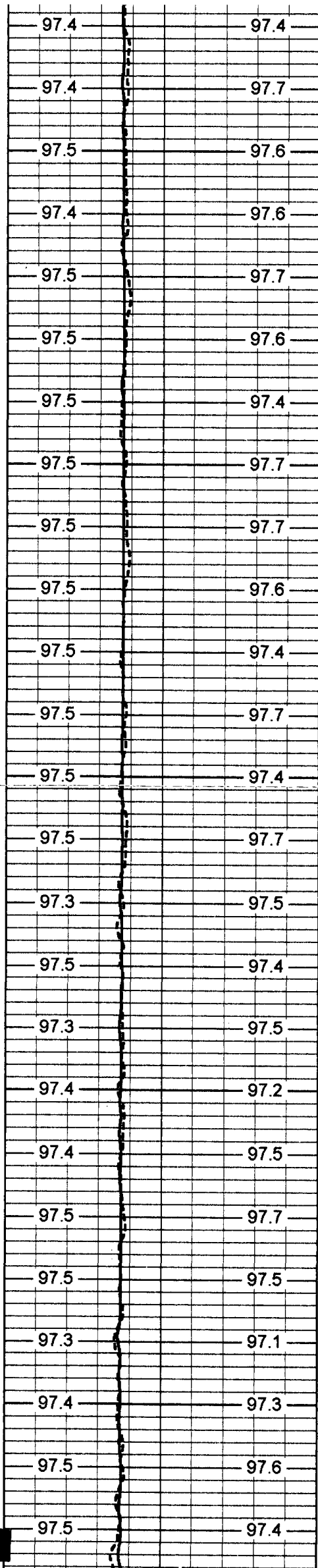
750

800

850

900





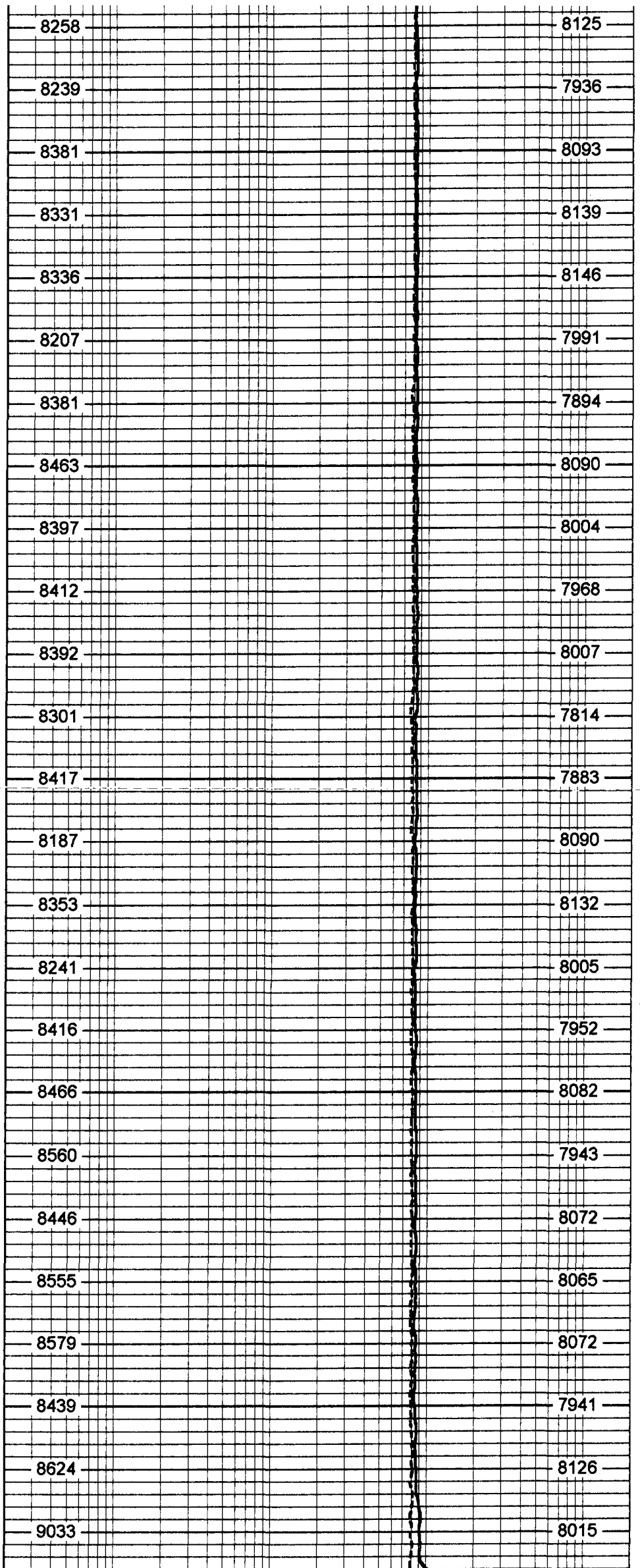
950

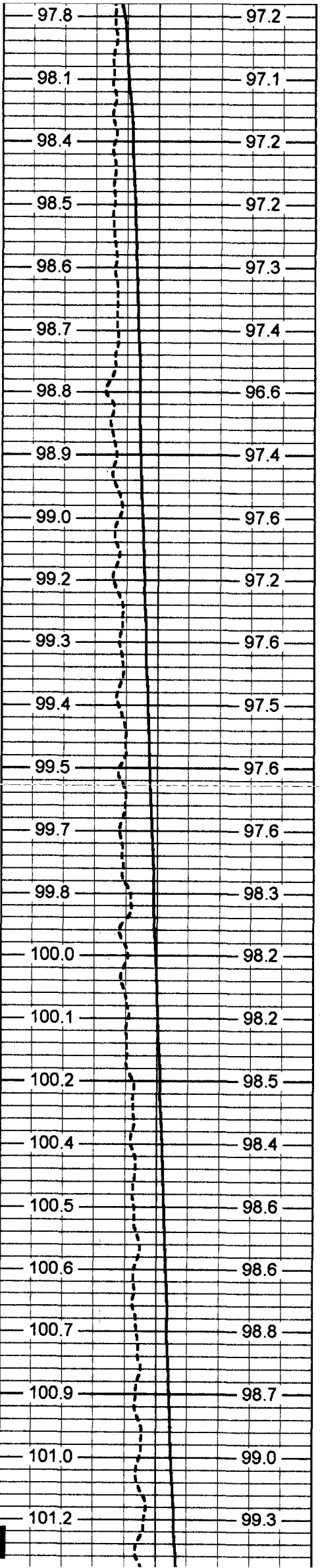
1000

1050

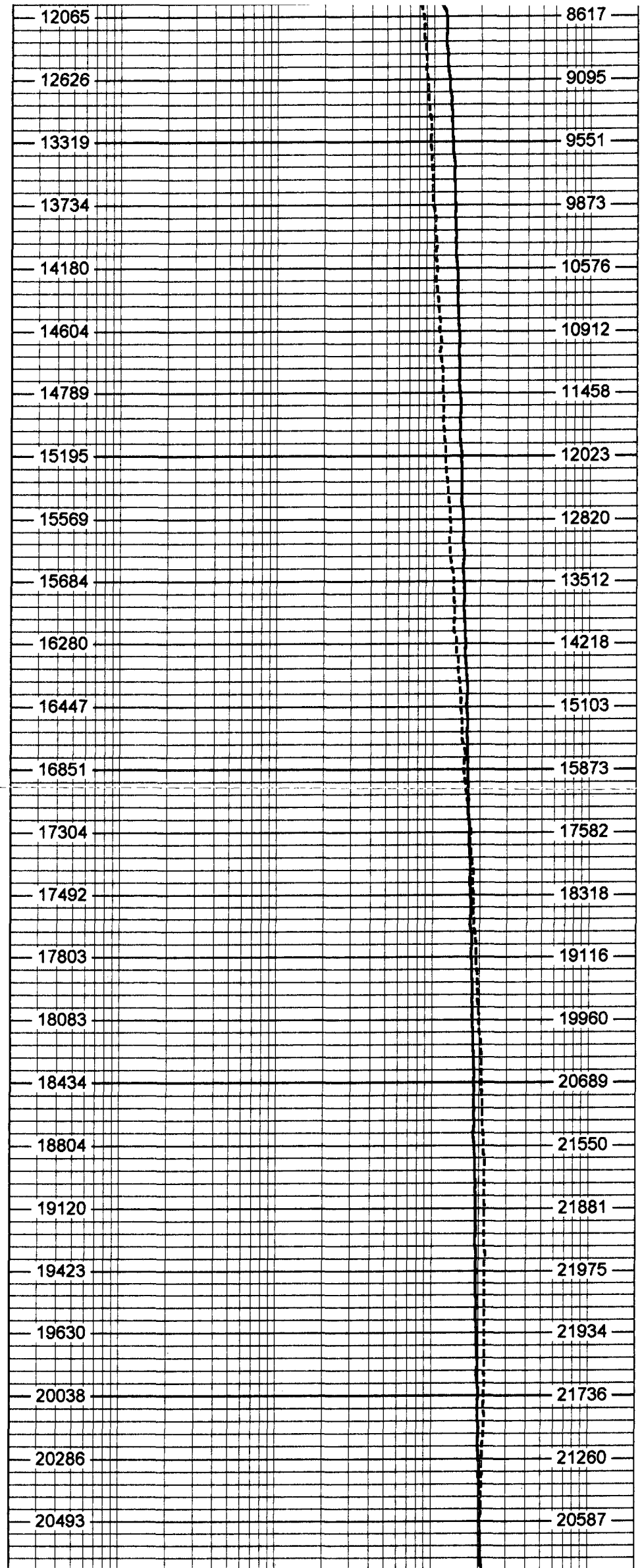
1100

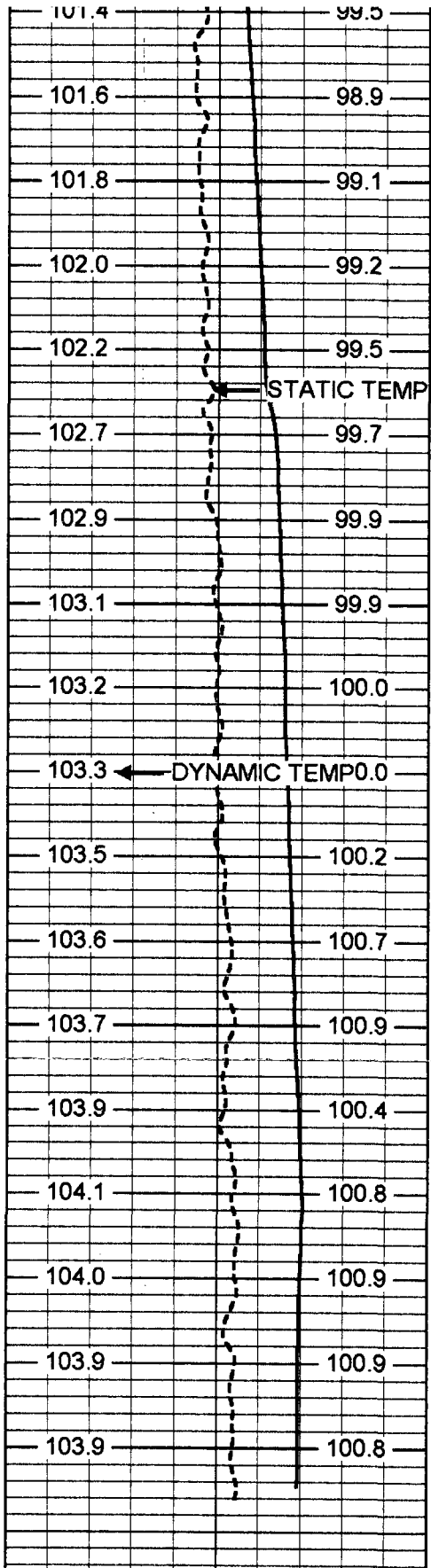
1150





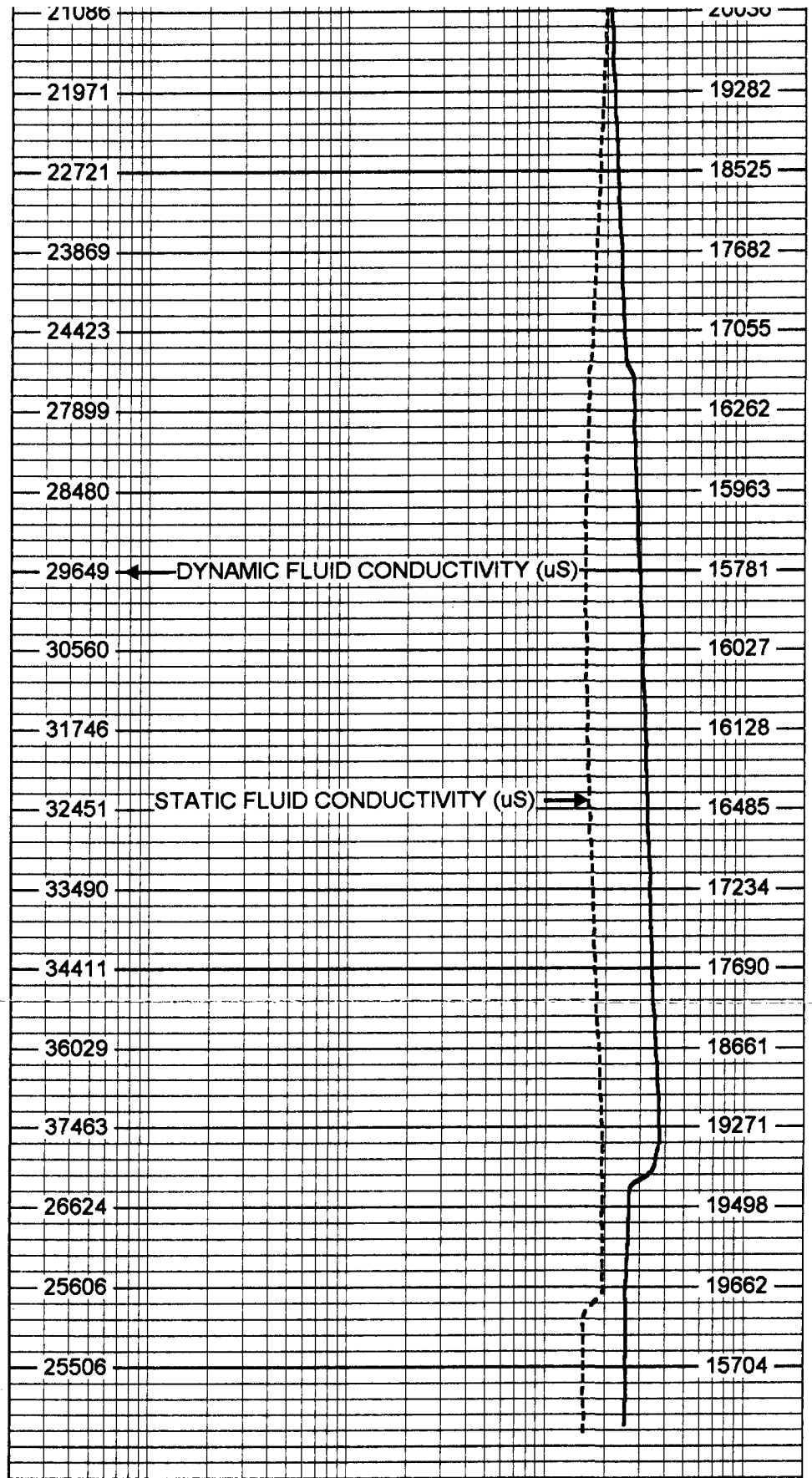
1200
1250
1300
1350
1400





1450
1500
1550
1600

90 DYNAMIC TEMP (degF) 110
90 STATIC TEMP (degF) 110



20 DYNAMIC FLUID CONDUCTIVITY (uS) 200000
20 STATIC FLUID CONDUCTIVITY (uS) 200000

FRT Calibration Report

Serial Number: 31
Tool Model: SONDEX
Performed: Thu Apr 22 09:03:45 2004

Point #	Reading	Reference
1	30.817 cps	1000.000
2	171.328 cps	10000.000
3	445.517 cps	25000.000
4	965.867 cps	50000.000
5		

Temperature Calibration Report

Serial Number: 31
Tool Model: SONDEX
Performed: Thu Apr 22 09:31:10 2004

Point #	Reading		Reference	
1	128.595	cps	41	degF
2	265.557	cps	70	degF
3	697.393	cps	156	degF

