



**YOUNGQUIST BROTHERS, Inc**

GEOPHYSICAL LOGGING DIVISION

RECEIVED - D.E.P.  
NOV 30 2007

**TEMPERATURE LOG**

Company CITY OF CAPE CORAL  
Well DZMW-1  
Field NORTH RO WTP  
County LEE  
State FL

Company CITY OF CAPE CORAL  
Well DZMW-1  
Field NORTH RO WTP  
County LEE  
State FL

Location  
Permanent Datum PAD  
Log Measured From PAD  
Drilling Measured From PAD  
Elevation 14.08

Other Services  
XYC  
Elevation  
K.B.  
D.F.  
G.L.

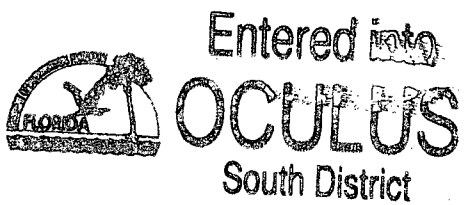
Date	15-NOV-07
Run Number	ELEVEN
Depth Driller	1350'
Depth Logger	1350'
Bottom Logged Interval	1350'
Top Log Interval	SURFACE
Open Hole Size	12.25"
Type Fluid	WATER
Density / Viscosity	N/A
Max. Recorded Temp.	N/A
Estimated Cement Top	N/A
Time Well Ready	0700
Time Logger on Bottom	7860
Equipment Number	103
Location	FT. MYERS
Recorded By	FULLER
Witnessed By	A.FRATARCANGELI

Run Number	Bit	Borehole Record		Run No.	Bit	Borehole Record	
		From	To			From	To
ONE	14.75"	CASING	517'	FIVE	22.50"	CASING	1095'
TWO	28.5"	CASING	480'	SEVEN	12.25"	CASING	1095'
THREE	29"	CASING	480'	EIGHT	12.25"	CASING	1350'
FOUR	12.25"	CASING	1318'	NINE	12.25"	CASING	1296'
Casing Record	Size	Wgt/Ft	Top	Bottom			
Surface String	30"	3.75 W.T.	SURFACE	50'			
Prod. String	24"	3.75 W.T.	SURFACE	475'			
Production String	16"	5 W.T.	SURFACE	1090'			
Liner	6.625"	FRP	SURFACE	1317'			

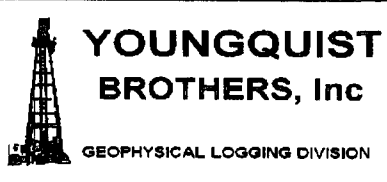
<<< Fold Here >>>

All interpretations are opinions based on inferences from electrical or other measurements and we cannot and do not guarantee the accuracy or correctness of any interpretation, and we shall not, except in the case of gross or willful negligence on our part, be liable or responsible for any loss, costs, damages, or expenses incurred or sustained by anyone resulting from any interpretation made by any of our officers, agents or employees. These interpretations are also subject to our general terms and conditions set out in our current Price Schedule.

Comments

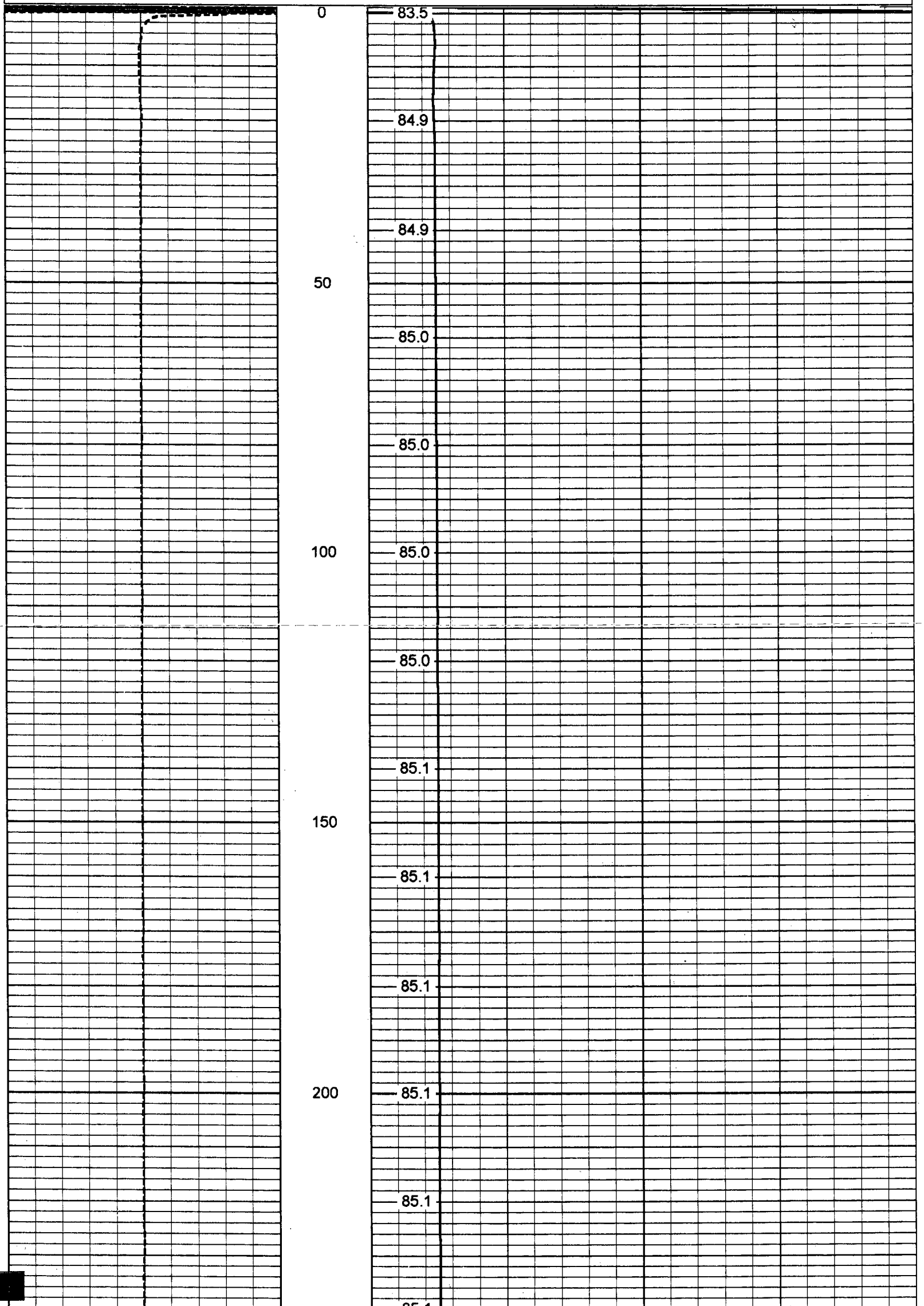


UPPER ZONE  
FLOWING @80 GPM  
WHILE LOGGING



**TEMPERATURE**

Database File: ncapdzmw.db  
Dataset Pathname: run11/pass1  
Presentation Format: temp  
Dataset Creation: Thu Nov 15 12:43:01 2007 by Log 6.2\_B4  
Charted by: Depth in Feet scaled 1:240



250

85.1

85.1

300

85.1

85.2

85.1

350

85.1

85.2

400

85.2

85.1

85.2

450

85.1

85.1

500

85.1

85.1

85.1

550

85.1

85.1

600

85.1

85.1

85.0

650

85.0

85.0

700

85.0

85.0

85.0

750

85.0

85.0

800

85.0

85.0

84.9

850

84.9

84.9

900

84.8

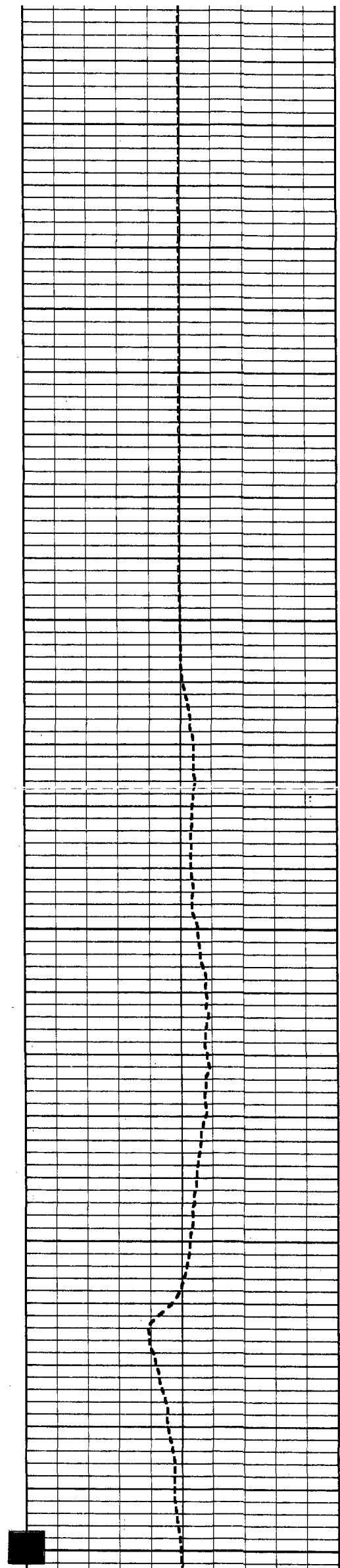
84.9

84.9

950

84.8

84.8



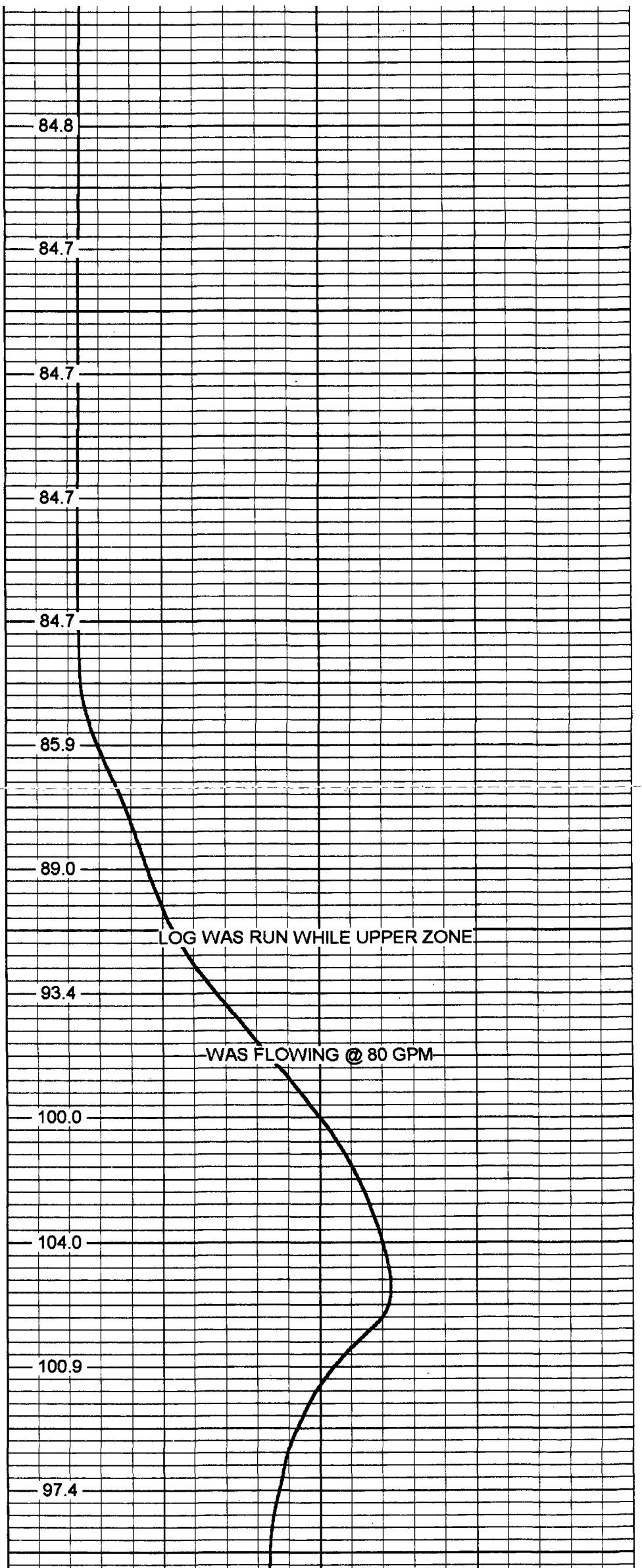
1050

1100

1150

1200

1250



84.8

84.7

84.7

84.7

84.7

85.9

89.0

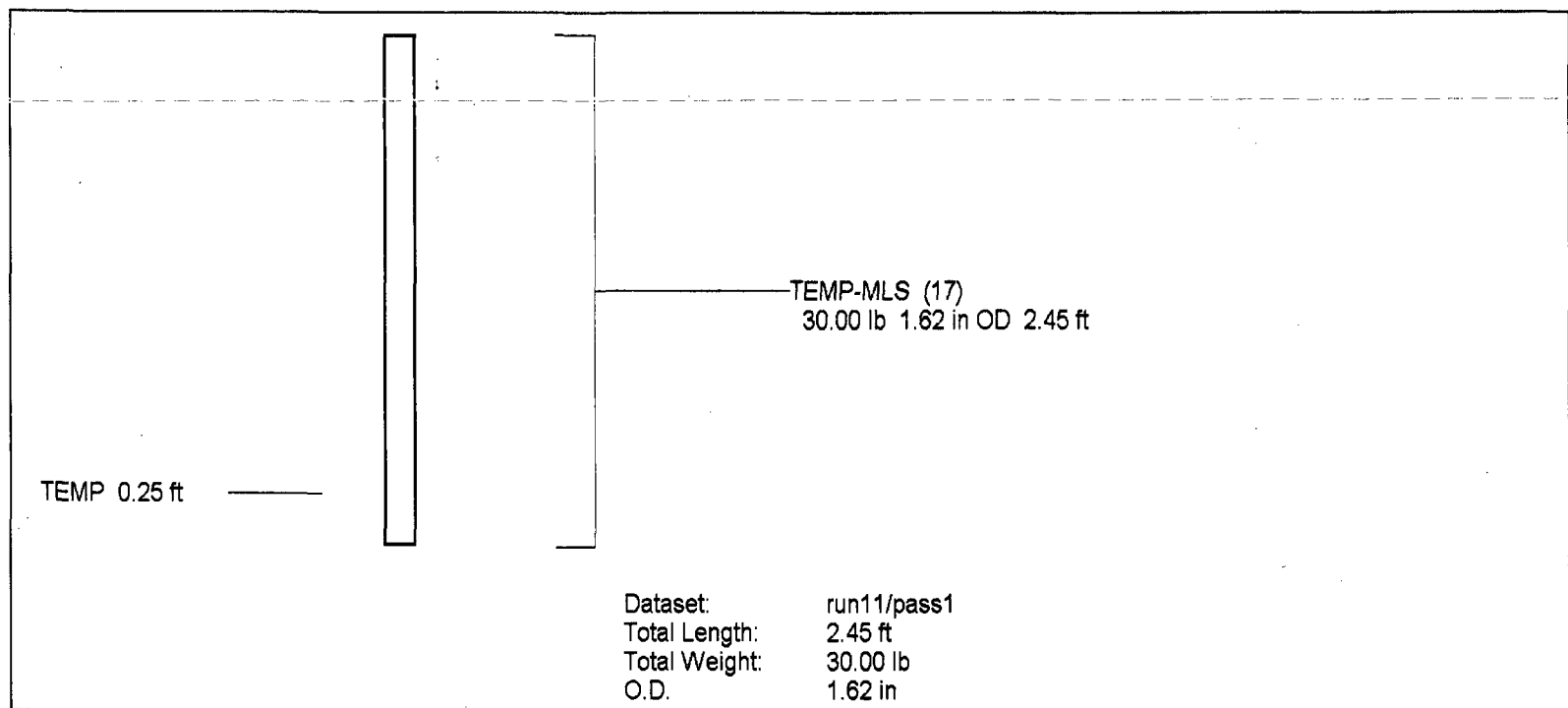
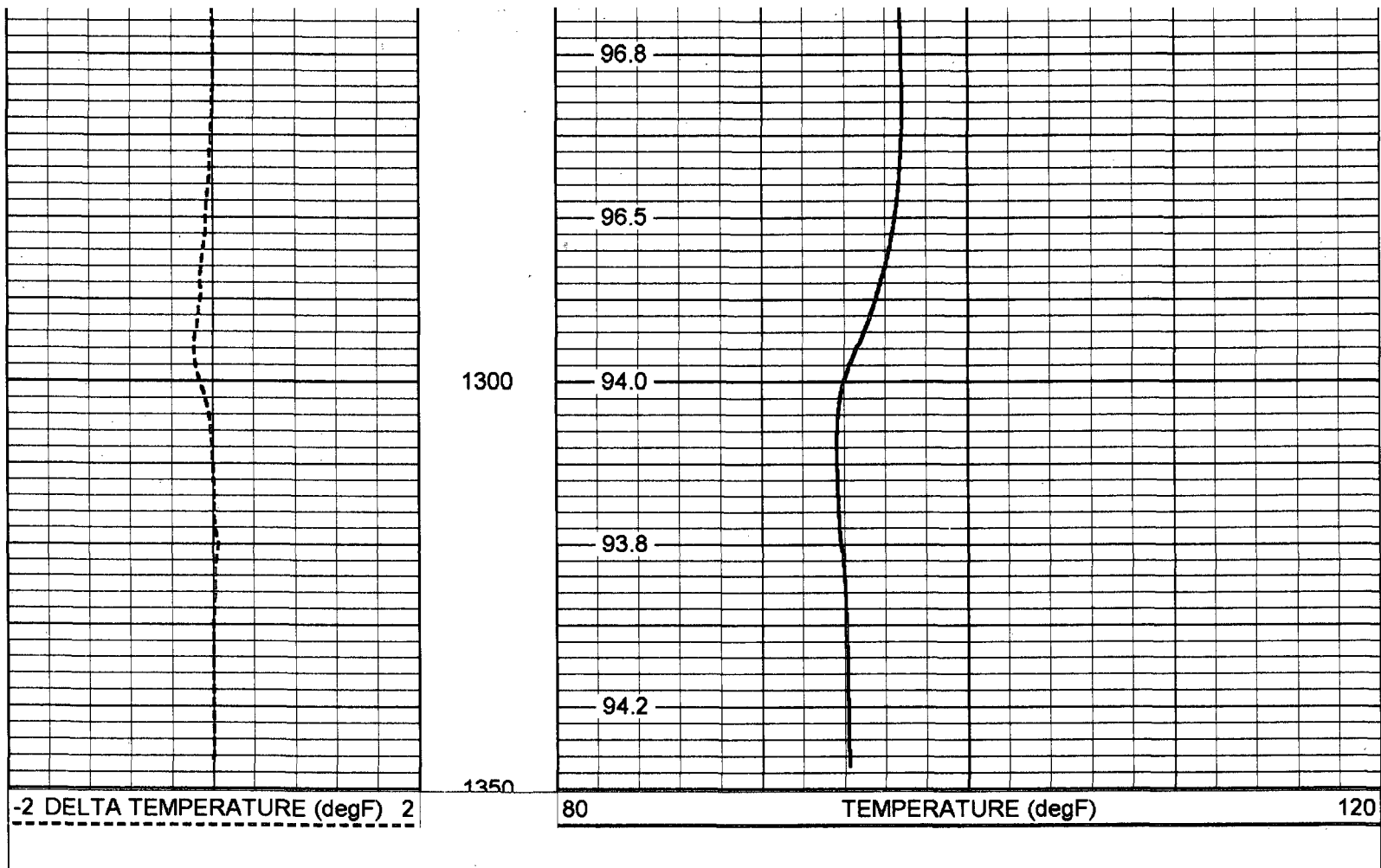
93.4

100.0

104.0

100.9

97.4



Temperature Calibration Report				
Serial Number:		17		
Tool Model:		MLS		
Performed:		Tue Feb 27 11:19:44 2007		
Point #	Reading		Reference	
1	321	cps	32	degF
2	700.1	cps	70	degF
3	2000.1	cps	200	degF