

RECEIVED

SEP 28 1999



FLUID CONDUCTIVITY  
TEMPERATURE  
LOG

Company MISSIMER INTERNATIONAL  
Well IW - 1  
Field I.W.A  
Country LEE  
State/Prv FLORIDA

Company MISSIMER INTERNATIONAL  
Well DEEP INJECTION WELL #1  
Field ISLAND WATER ASSOCIATION  
Country LEE  
State/Prv FLORIDA

Permanent Datum PAD  
Log Measured From PAD  
Drilling Measured From PAD  
Elevation 5'  
Other Services FLOW

Date 16-SEP-99  
Run Number TEN  
Depth Driller 3237'  
Depth Logger 3236'  
Bottom Logged Interval 1850'  
Top Log Interval 12.25"  
Open Hole Size 12.25"  
Type Fluid WATER  
Density / Viscosity N/A  
Max. Recorded Temp N/A  
Estimated Cement Top N/A  
Time Well Ready N/A  
Time Logger on Bottom N/A  
Equipment Number 103  
Location FTMYERS  
Recorded By FERGUSON  
Witnessed By T. NYE

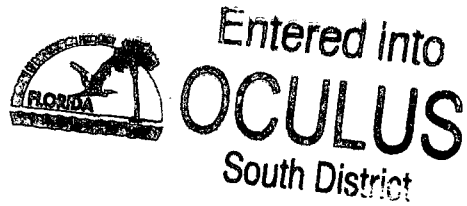
Run Number	Borehole Record		To	Size	Tubing Record		To
	Bit	From			Weight	From	
ONE	40.5"	SURFACE	403'				
TWO	32.5"	398'	970'				
THREE	12.25"	965'	3236'				

Casing Record	Surface Slings	Size	Wgt/Ft	Top		Bottom
				Top	Bottom	
Prod. Slings	28"	34"	375' W.T.	SURFACE	SURFACE	398'
Production Slings			375' W.T.	SURFACE	SURFACE	965'
Liner						

<<< Fold Here >>>

All interpretations are opinions based on inferences from electrical or other measurements and we cannot and do not guarantee the accuracy or correctness of any interpretation, and we shall not, except in the case of gross or willful negligence on our part, be liable or responsible for any loss, costs, damages, or expenses incurred or sustained by anyone resulting from any interpretation made by any of our officers, agents or employees. These interpretations are also subject to our general terms and conditions set out in our current Price Schedule.

Comments



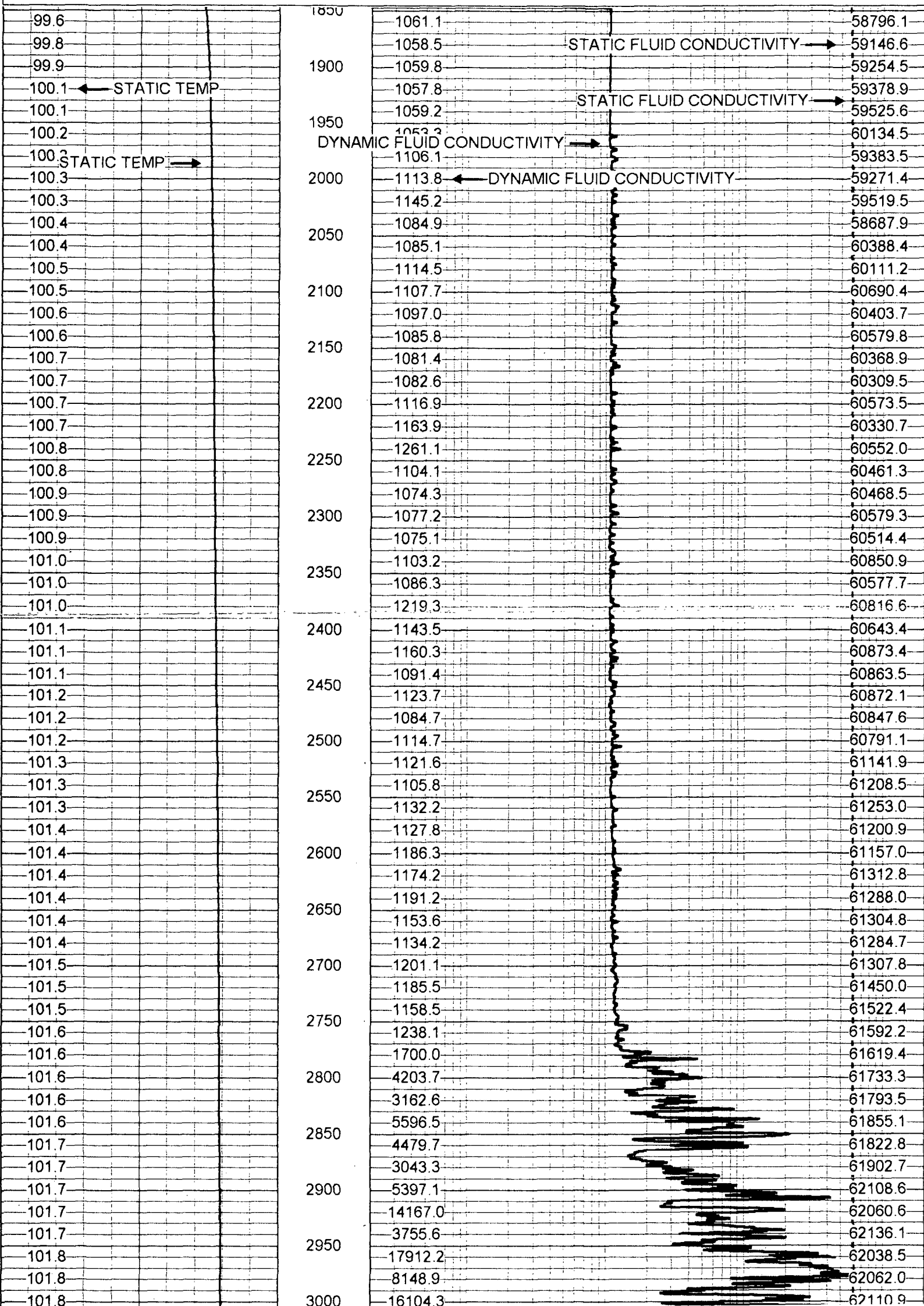
MERGED FLUID COND.

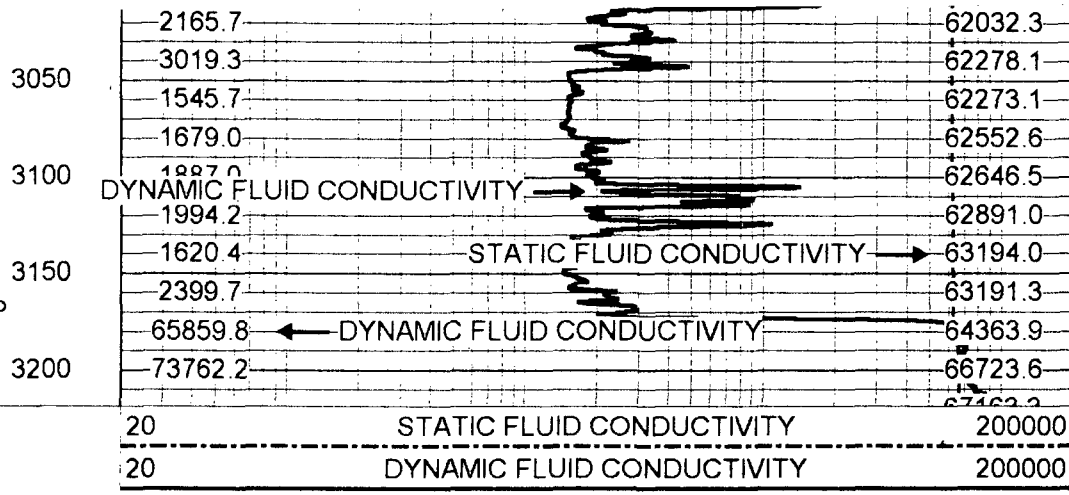
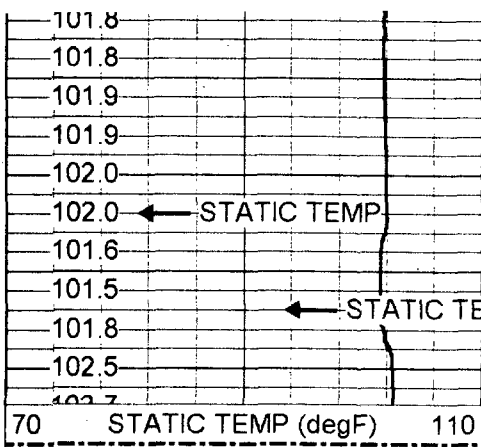
Database File: saniw1.db  
Dataset Pathname: run10/pass20  
Presentation Format: frttmpmg.prs  
Dataset Creation: Thu Sep 16 10:03:41 1999

Charted by:

Depth in Feet scaled 1:1200

70	STATIC TEMP (degF)	110	20	STATIC FLUID CONDUCTIVITY	200000
20			20	DYNAMIC FLUID CONDUCTIVITY	200000





70    STATIC TEMP (degF)    110

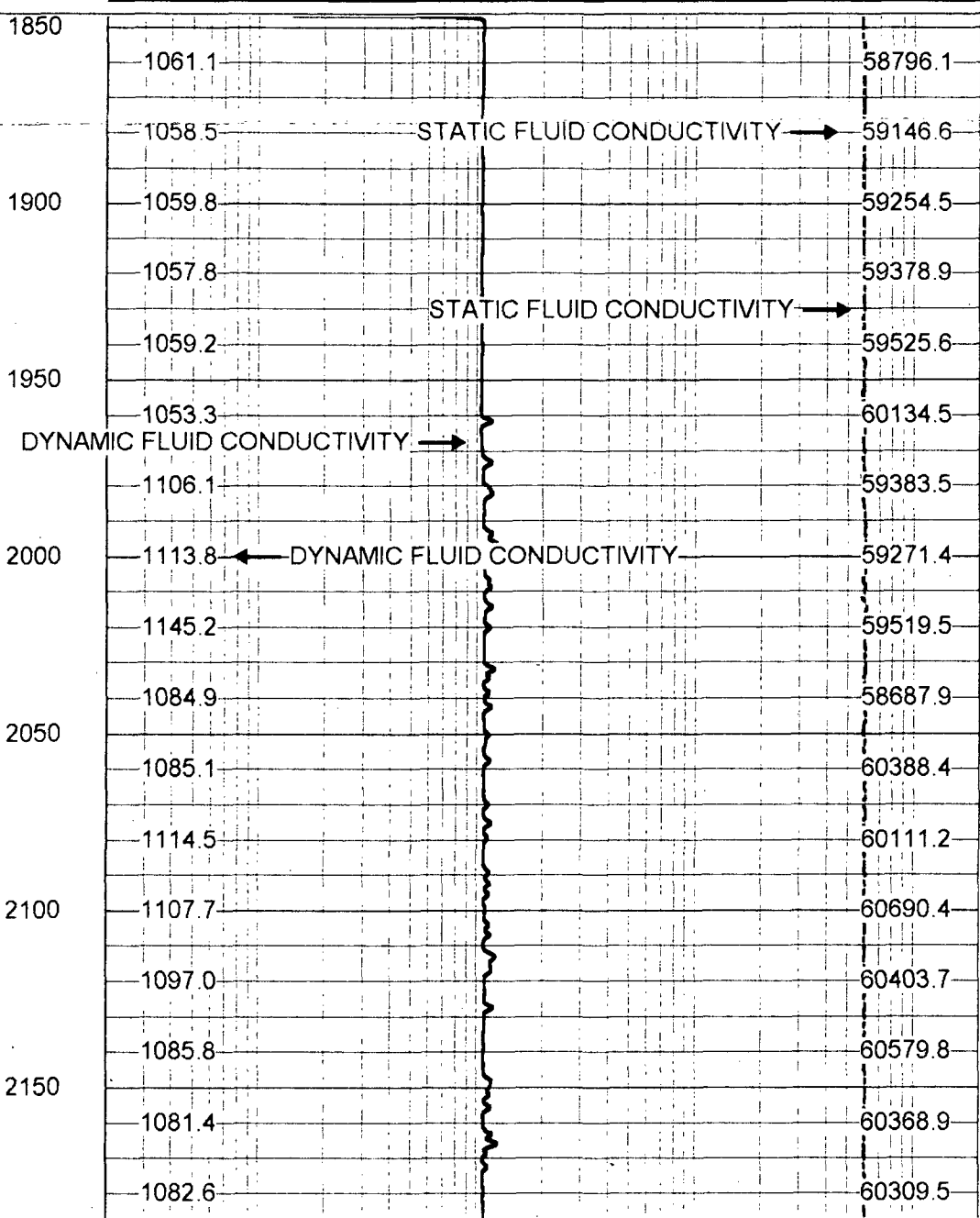
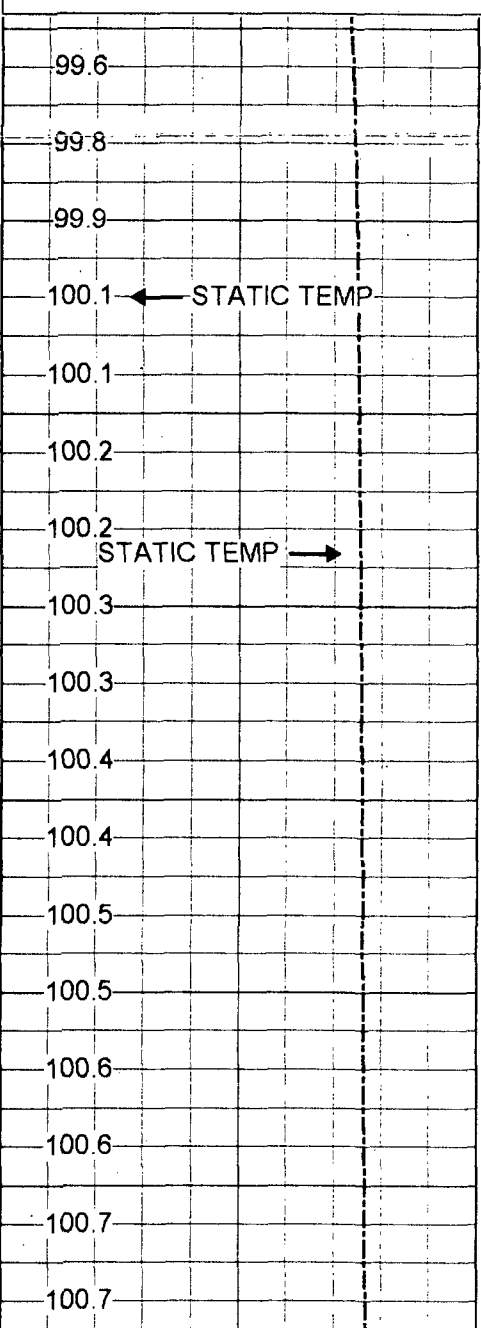
20    STATIC FLUID CONDUCTIVITY    200000  
 20    DYNAMIC FLUID CONDUCTIVITY    200000

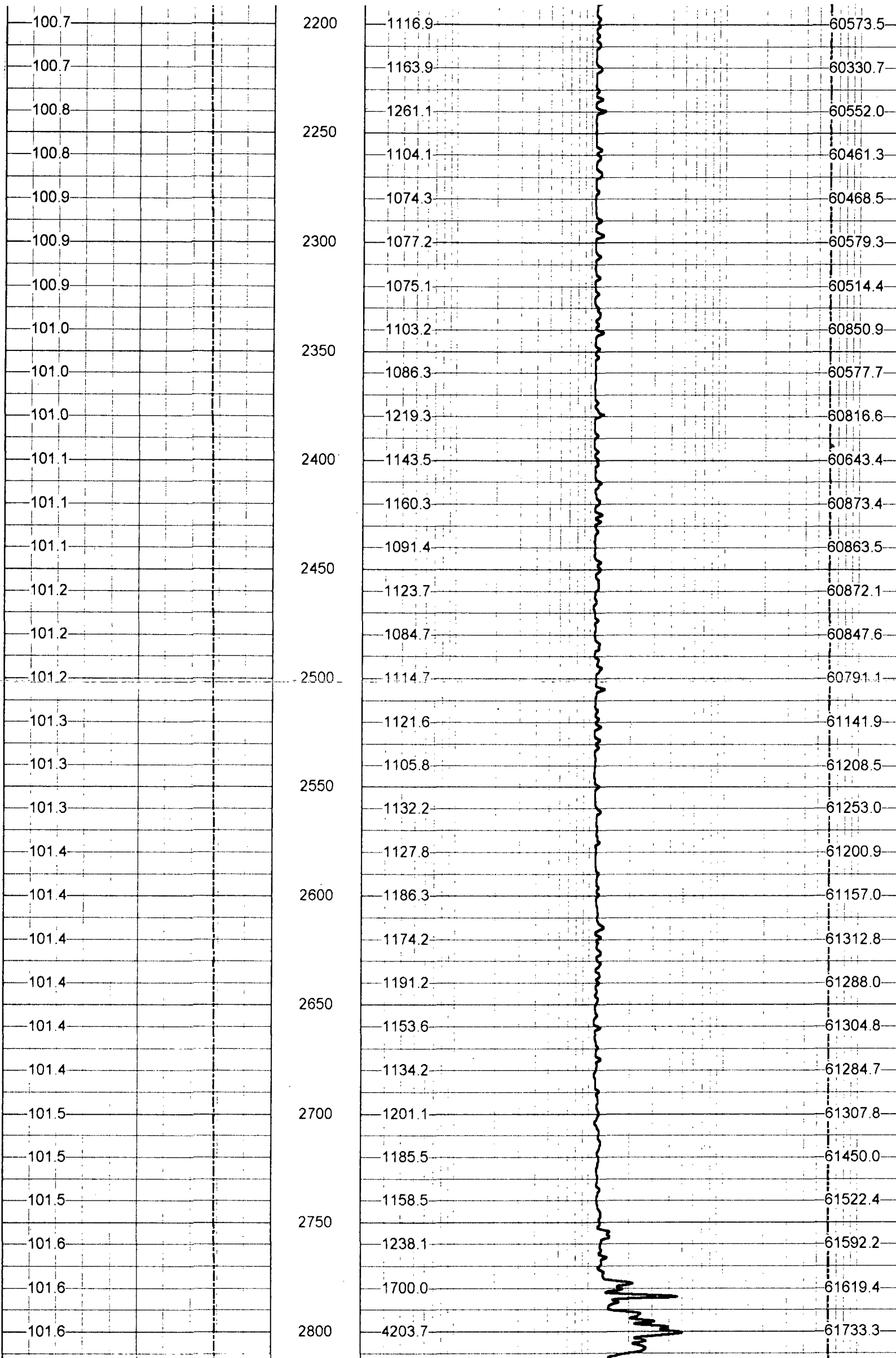
# MERGED FLUID COND.

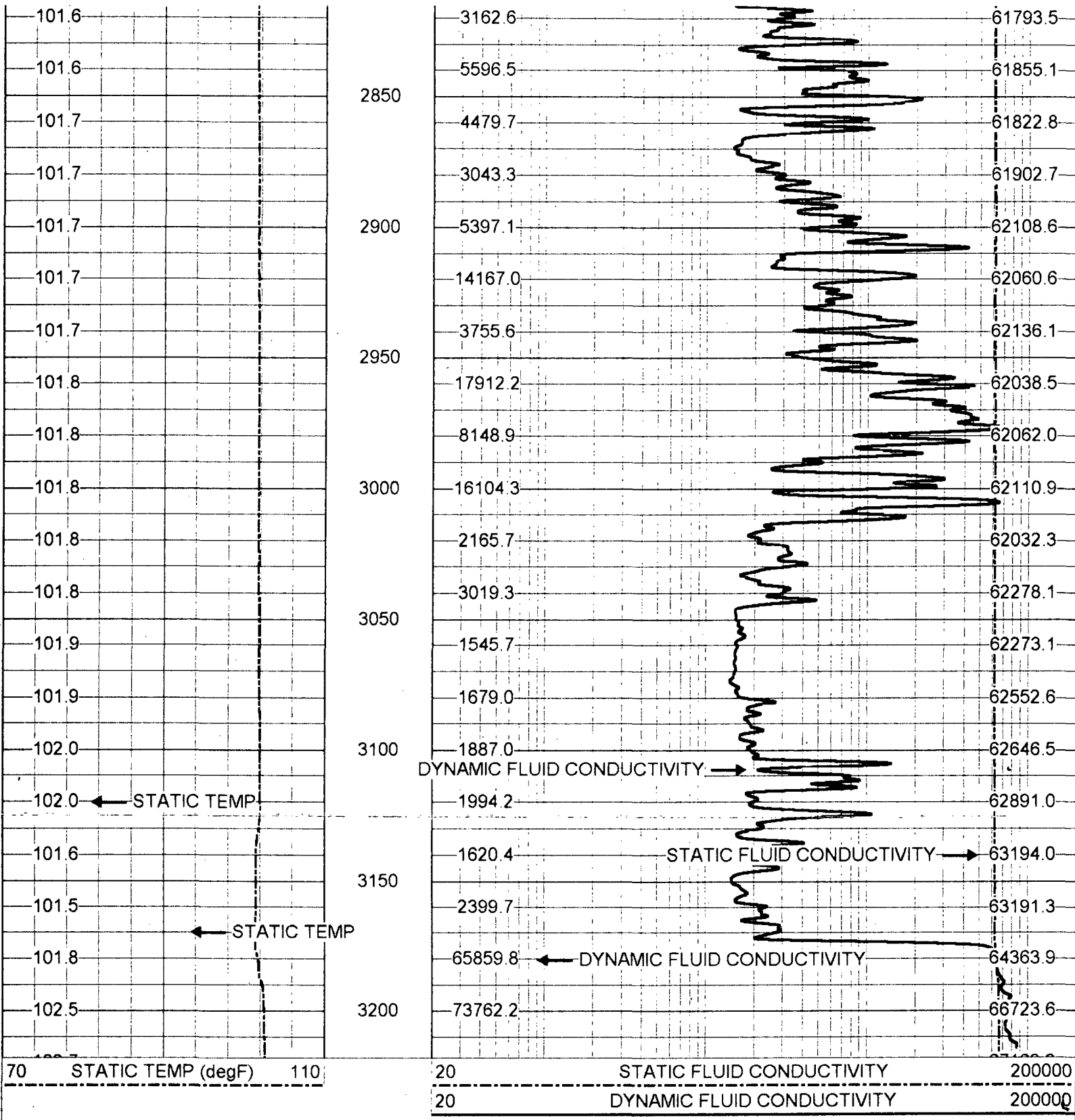
Database File:            saniw1.db  
 Dataset Pathname:        run10/pass20  
 Presentation Format:      frrttmpmg.prs  
 Dataset Creation:        Thu Sep 16 16:02:17 1999 by Log VER\_5.4  
 Charted by:              Depth in Feet scaled 1:600

70    STATIC TEMP (degF)    110

20    STATIC FLUID CONDUCTIVITY    200000  
 20    DYNAMIC FLUID CONDUCTIVITY    200000

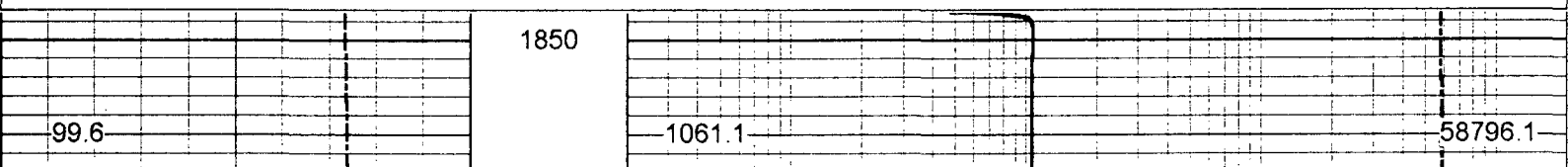


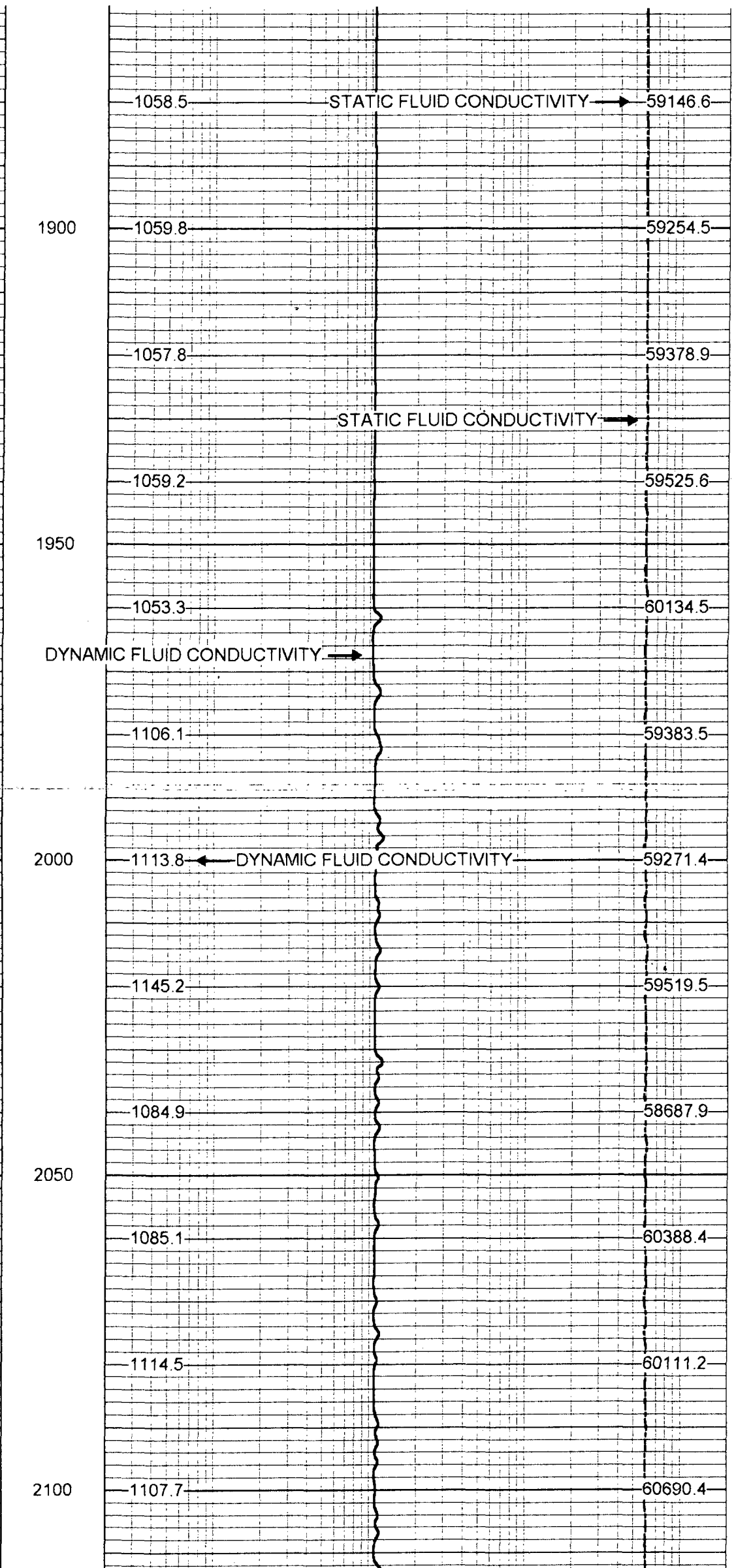
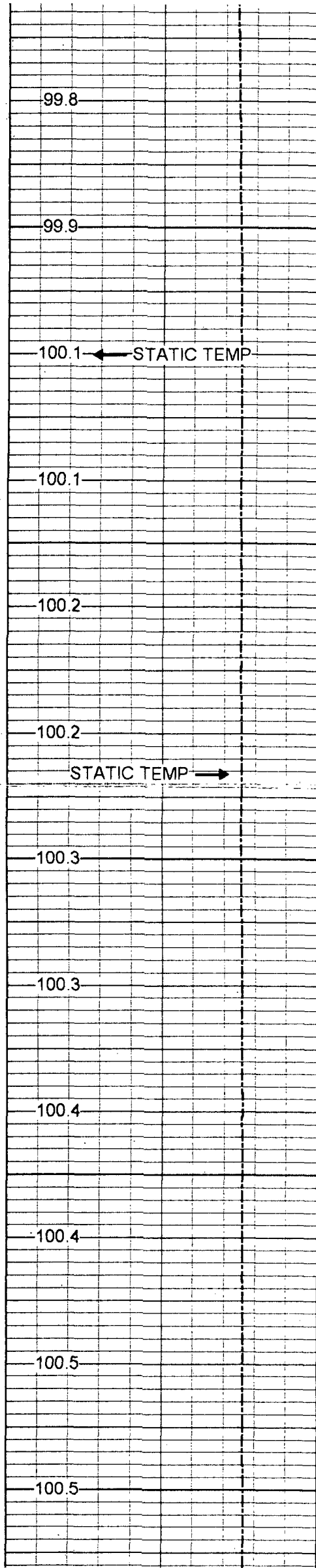


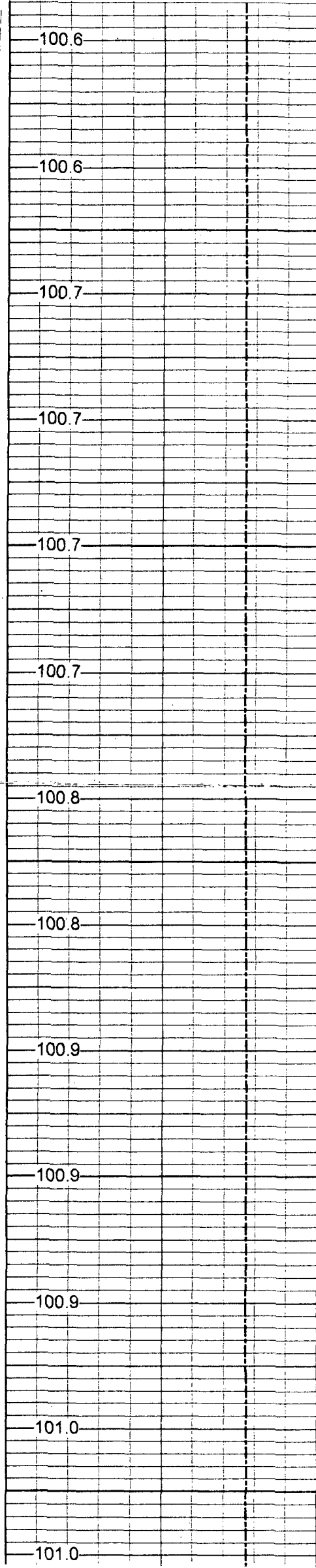


**FLORIDA** GEOPHYSICAL LOGGING, INC. **MERGED FLUID COND.**

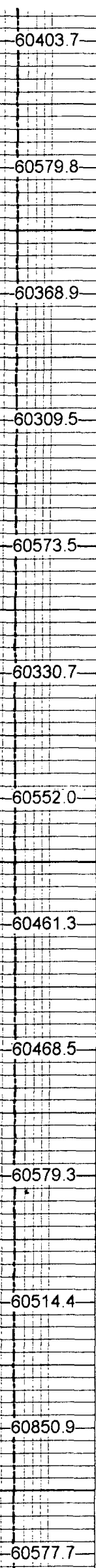
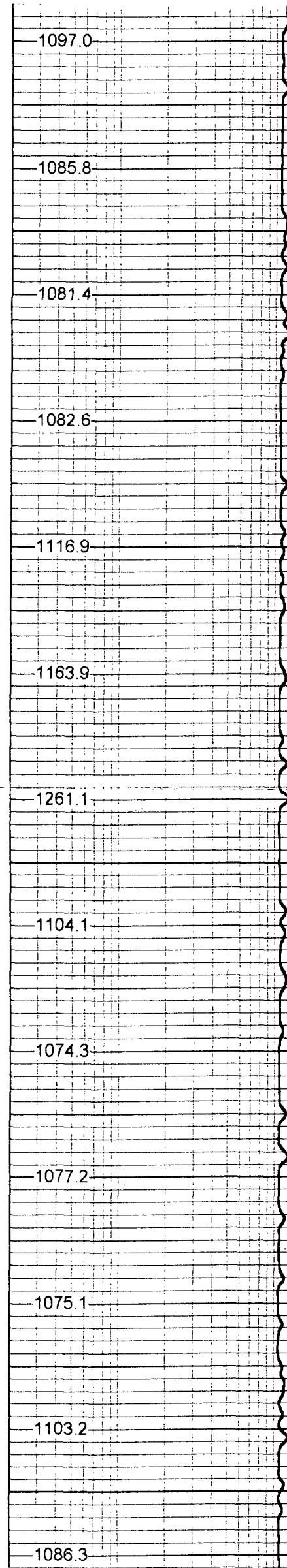
Database File: saniw1.db  
 Dataset Pathname: run10/pass20  
 Presentation Format: frttmpmg.prs  
 Dataset Creation: Thu Sep 16 16:02:17 1999 by Log VER\_5.4  
 Charted by: Depth in Feet scaled 1:240

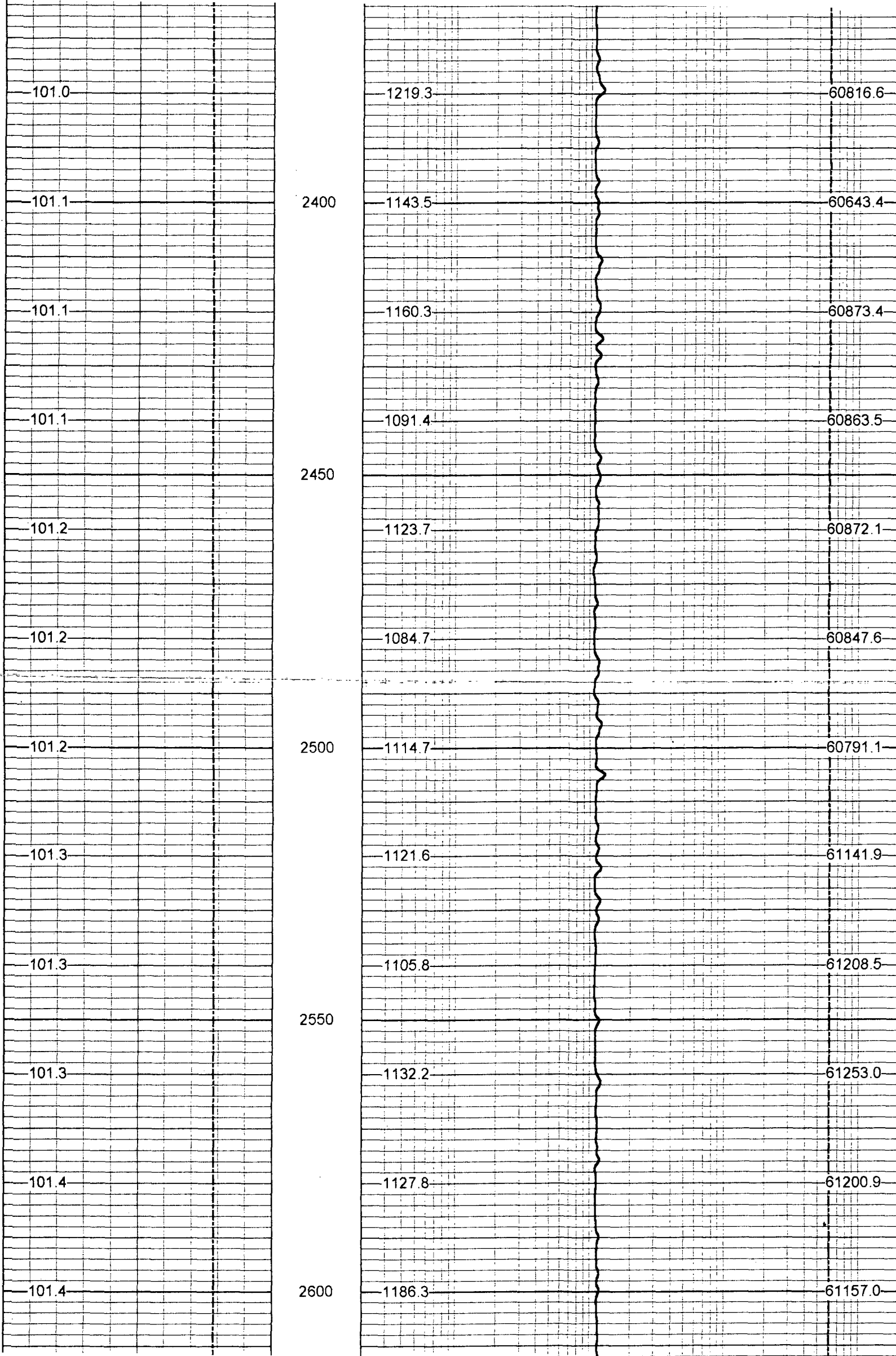




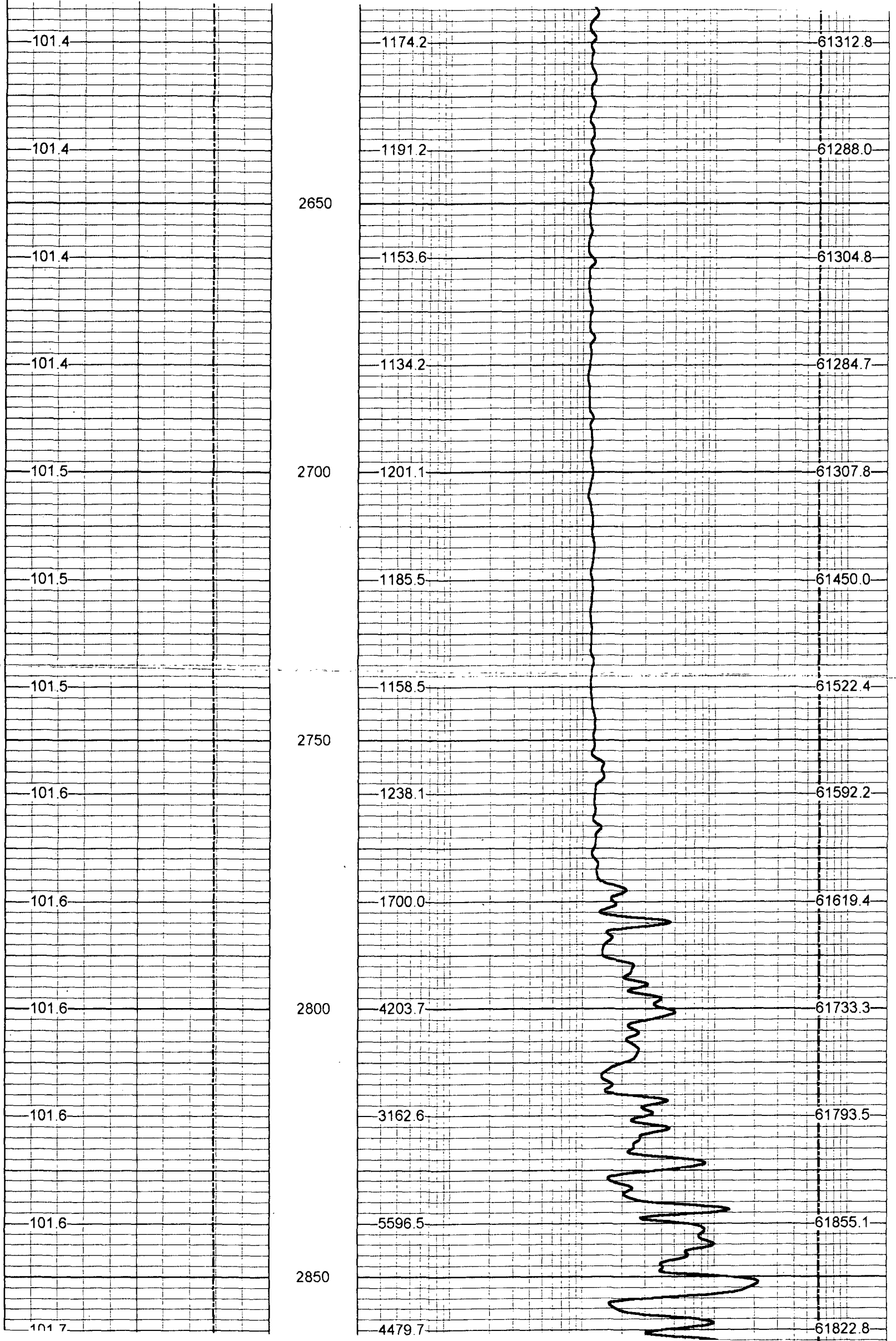


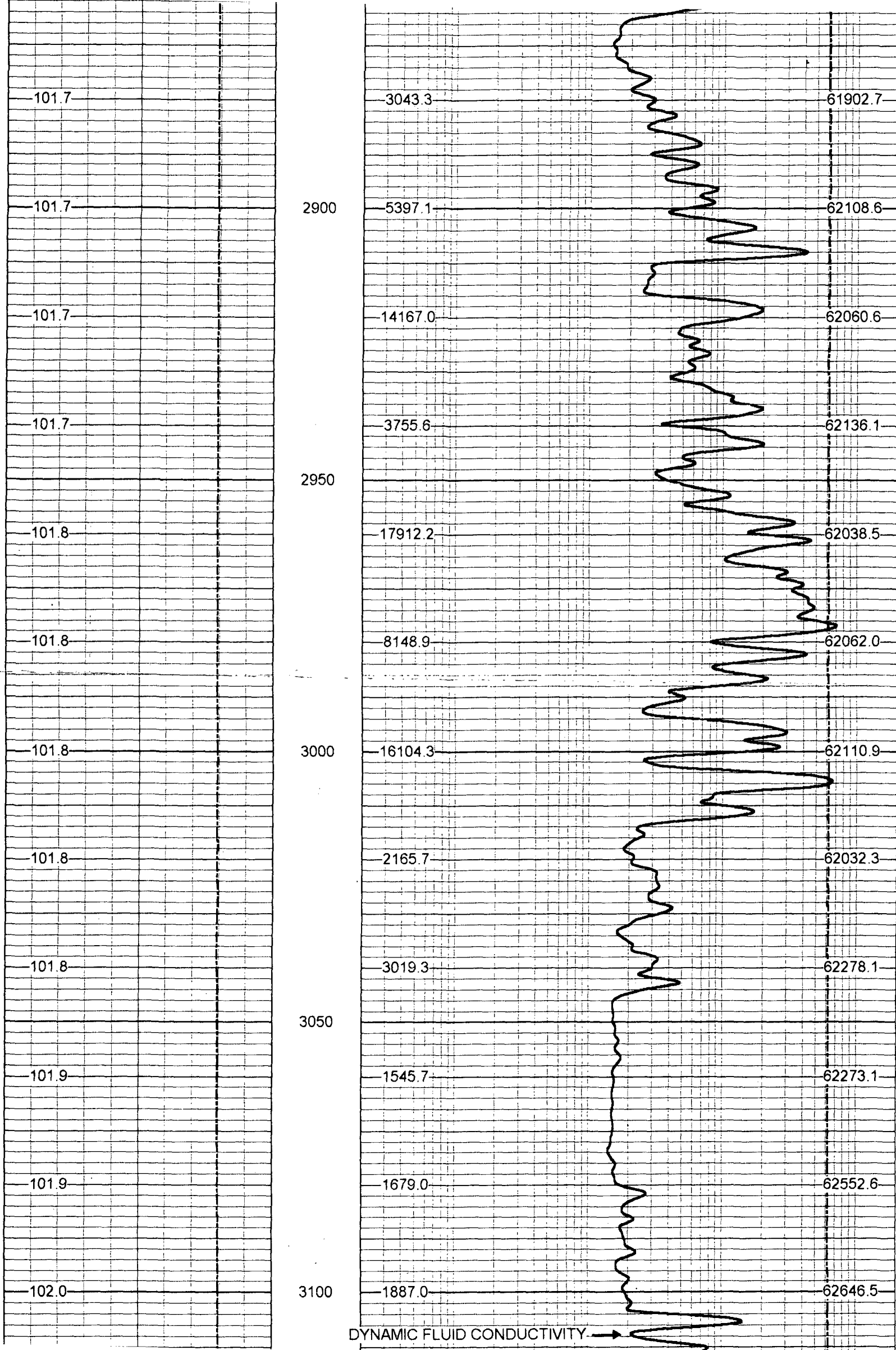
2150  
2200  
2250  
2300  
2350

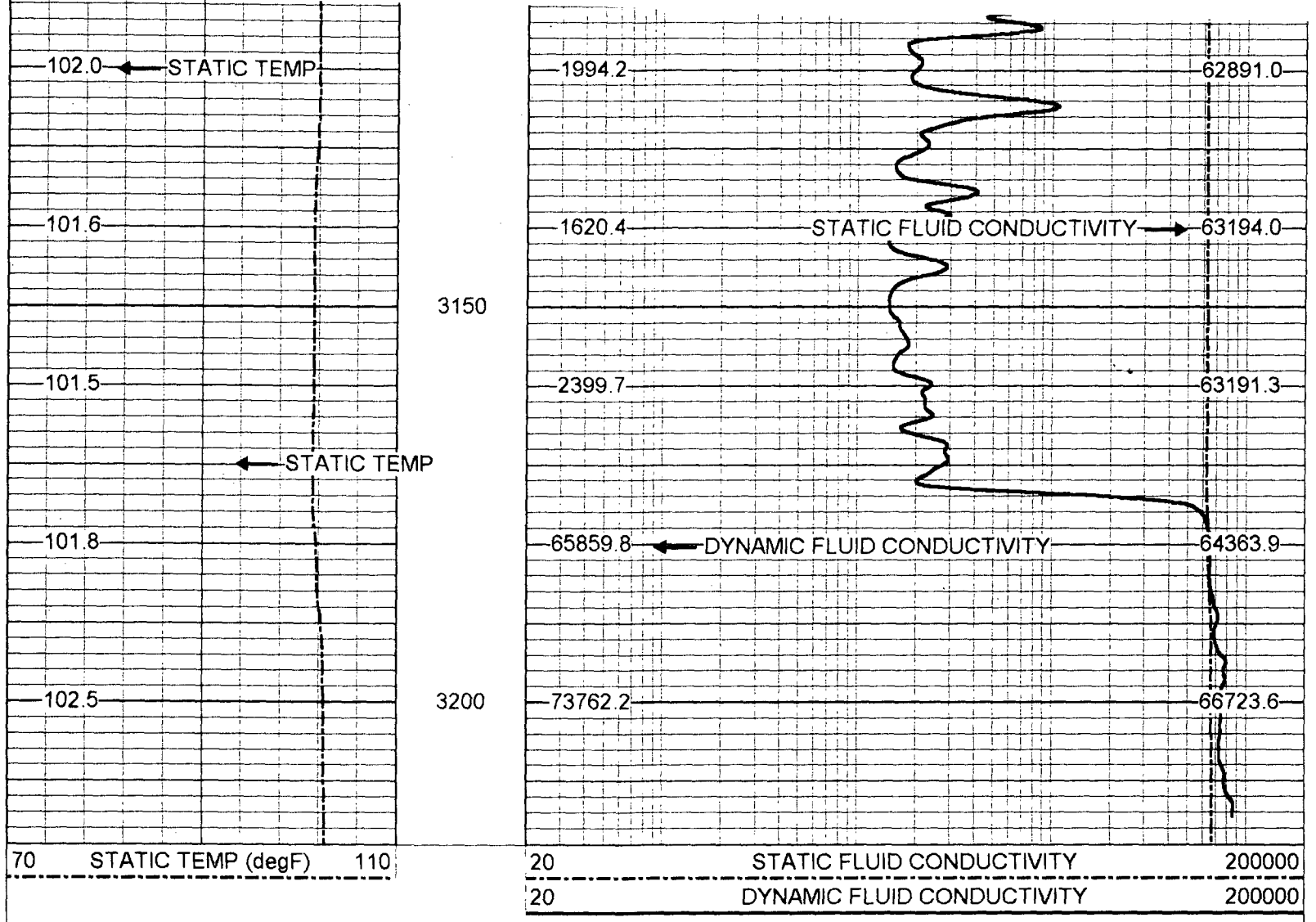












FRT Calibration Report

Serial Number: 31  
 Tool Model: SONDEX  
 Performed: Thu Sep 02 16:23:55 1999

Point #	Reading	Reference
1	25.985 cps	500.000
2	32.773 cps	1000.000
3	220.093 cps	10000.000
4	1235.570 cps	50000.000
5	3336.770 cps	100000.000
6	-	-

Temperature Calibration Report

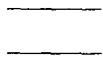
Serial Number: 31  
 Tool Model: SONDEX  
 Performed: Wed Sep 01 14:44:38 1999

Point #	Reading	Reference
1	128.676 cps	36 degF
2	400.758 cps	93 degF
3	625.501 cps	139 degF

TEMP-SONDEX (31) 10.00 lb 1.62 in OD 1.20 ft

TEMP 0.70 ft

FRES 0.50 ft



FRT-SONDEX (31) 10.00 lb 1.69 in OD 0.60 ft

Dataset:	run10/pass20
Total Length:	1.80 ft
Total Weight:	20.00 lb
O.D.	1.69 in