

**FLORIDA**  
GEOPHYSICAL LOGGING, INC.

**HIGH RESOLUTION  
TEMPERATURE  
LOG**

Company **MISSIMER INTERNATIONAL**  
Well **IW - 1**  
Field **I.W.A**  
Country **LEE**  
State/Prv **FLORIDA**

Company **MISSIMER INTERNATIONAL**  
Well **DEEP INJECTION WELL #1**  
Field **ISLAND WATER ASSOCIATION**  
Country **LEE**  
State/Prv **FLORIDA**

Location  
Permanent Datum  
Log Measured From  
Drilling Measured From  
Elevation 5'  
Other Services  
RTS  
Elevation  
K.B.  
D.F.  
G.L.

Date	06-JAN-2000	
Run Number	MIT 00'	
Depth Driller	3237	
Depth Logger	3236'	
Bottom Logged Interval	3236'	
Top Log Interval	SURFACE	
Open Hole Size	N/A	
Type Fluid	WATER	
Density / Viscosity	N/A	
Max. Recorded Temp.	121 F	
Estimated Cement Top	N/A	
Time Well Ready	0900	
Time Logger on Bottom	1030	
Equipment Number	103	
Location	FT. MYERS DENISON B. MALIVA	J. HABERFELD
Recorded By		
Witnessed By		

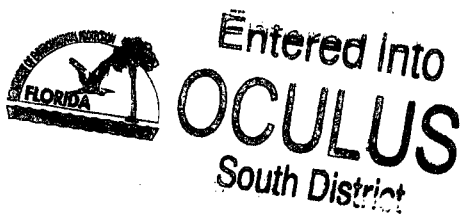
Borehole Record		Tubing Record	
Run Number	Bit Size	From	To
ONE	40.5"	SURFACE	403'
TWO	32.5"	398'	970'
THREE	12.25"	965'	3236'
FOUR	26"	CASING	2565'

Casing Record		Tubing Record	
Surface String	Size	Wgt/Ft	Top
Surface String	34"	375 W.T.	SURFACE
Prot String	28"	375 W.T.	SURFACE
Production String	18"	5 W.T.	SURFACE
Liner	14"	5 W.T.	SURFACE

<<< Fold Here >>>

All interpretations are opinions based on inferences from electrical or other measurements and we cannot and do not guarantee the accuracy or correctness of any interpretation, and we shall not, except in the case of gross or willful negligence on our part, be liable or responsible for any loss, costs, damages, or expenses incurred or sustained by anyone resulting from any interpretation made by any of our officers, agents or employees. These interpretations are also subject to our general terms and conditions set out in our current Price Schedule.

Comments



**TEMPERATURE SURVEY**

Database File: saniwrts.db  
 Dataset Pathname: pass13  
 Presentation Format: temp.prs  
 Dataset Creation: Thu Jan 06 09:10:13 2000 by LOG VER 5.4

Charted by:

Depth in Feet scaled 1:240

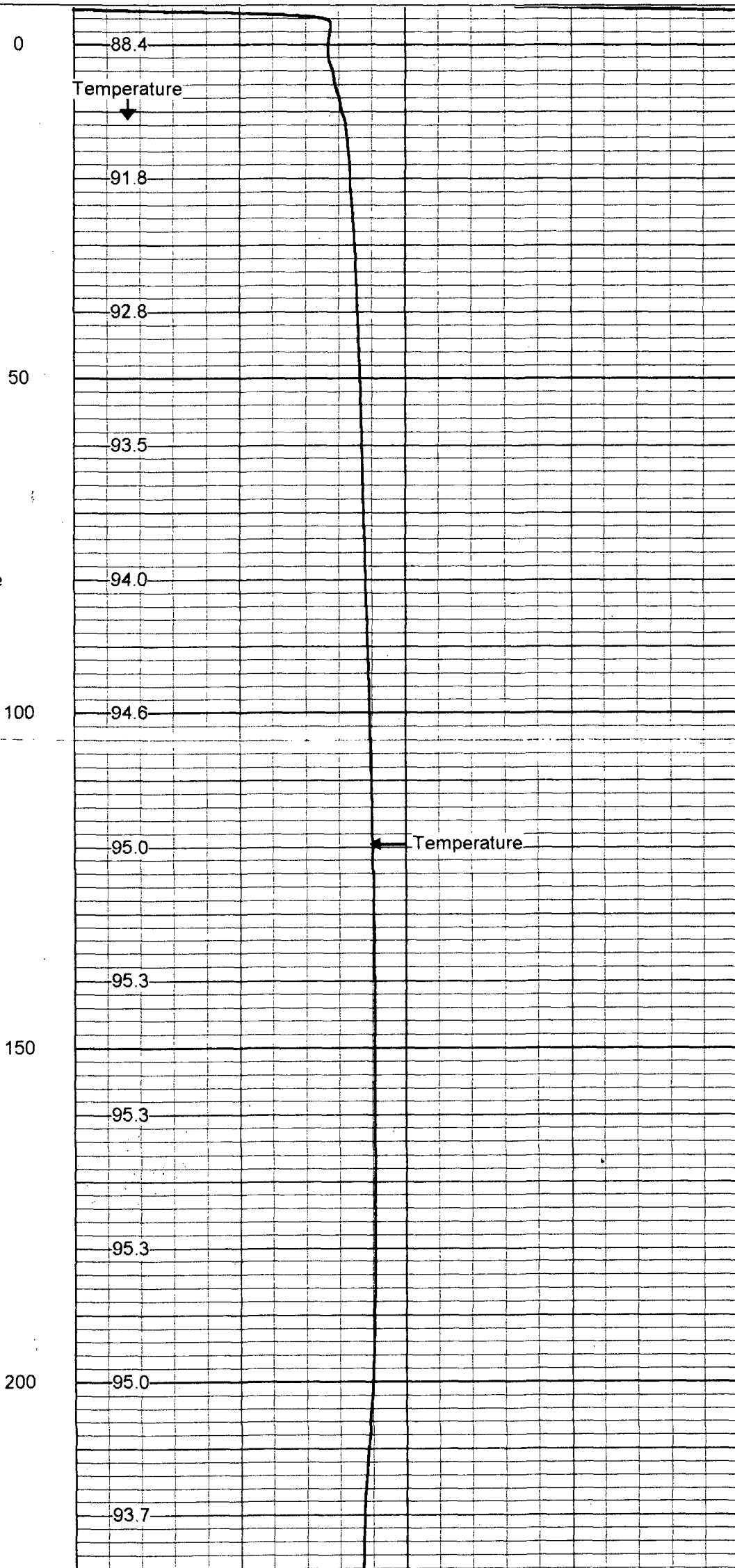
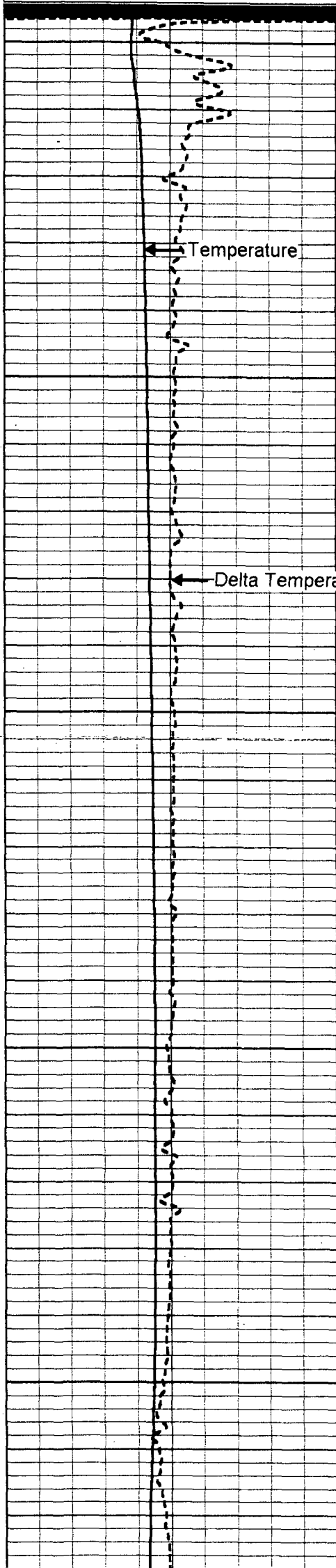
50 TEMPERATURE (degF) 150

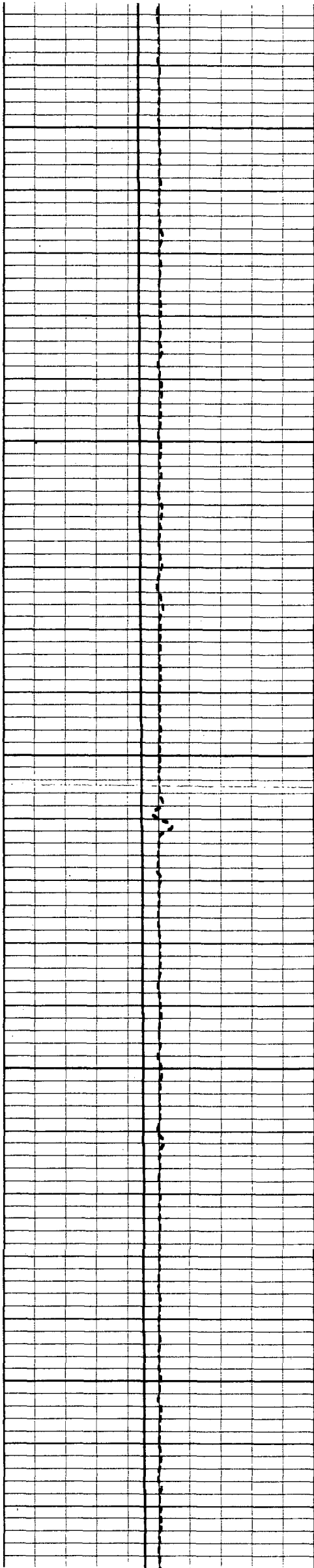
50

TEMPERATURE (degF)

150

-1 DELTA TEMPERATURE (degF) 1





250

300

350

400

450

93.5

93.6

93.7

93.9

94.2

94.5

94.7

94.8

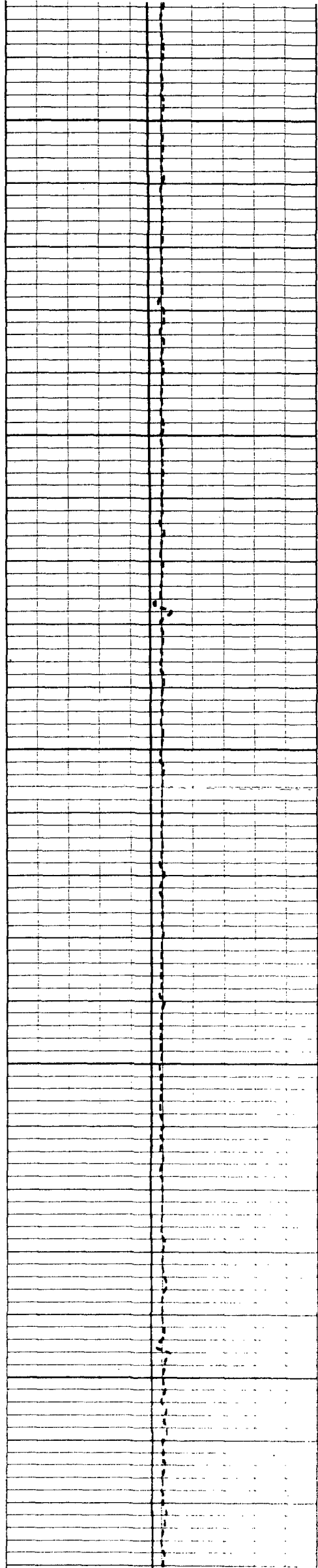
95.0

95.2

95.3

95.5

95.6



500

95.8

96.0

96.2

550

96.4

96.5

600

96.6

96.7

96.6

650

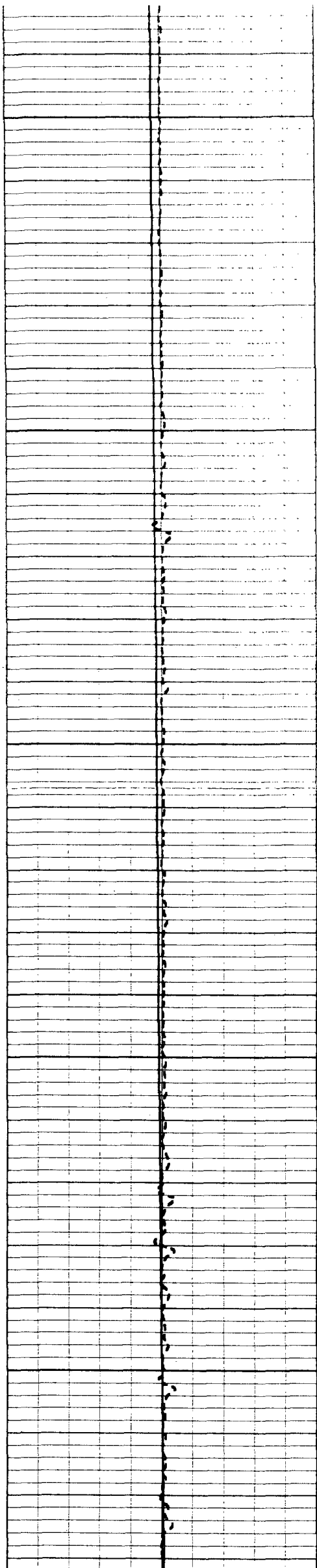
96.5

96.5

700

96.8

97.1



750

97.3

97.5

97.6

800

97.8

98.1

98.4

850

98.6

98.9

900

99.2

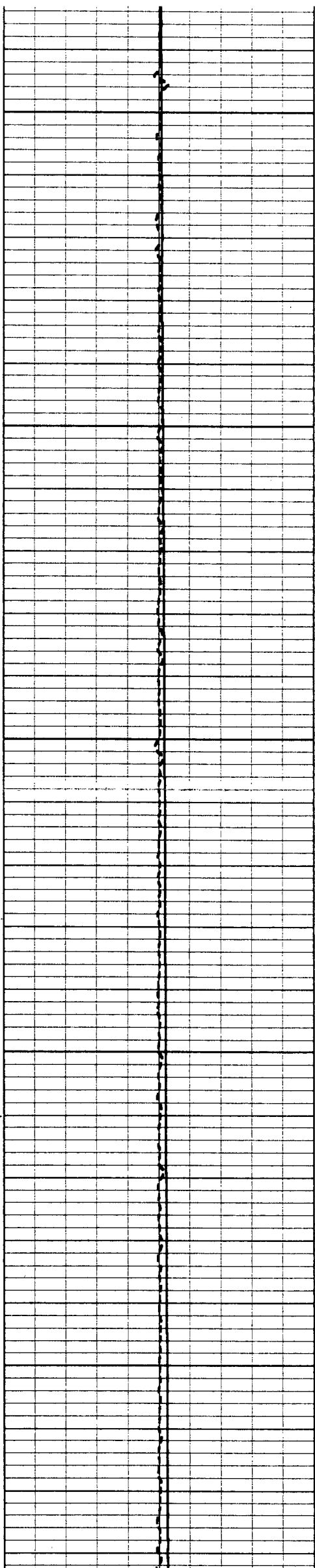
99.5

99.9

950

100.3

100.7



1000

101.0

101.2

101.4

1050

101.6

101.9

1100

102.0

102.2

102.3

1150

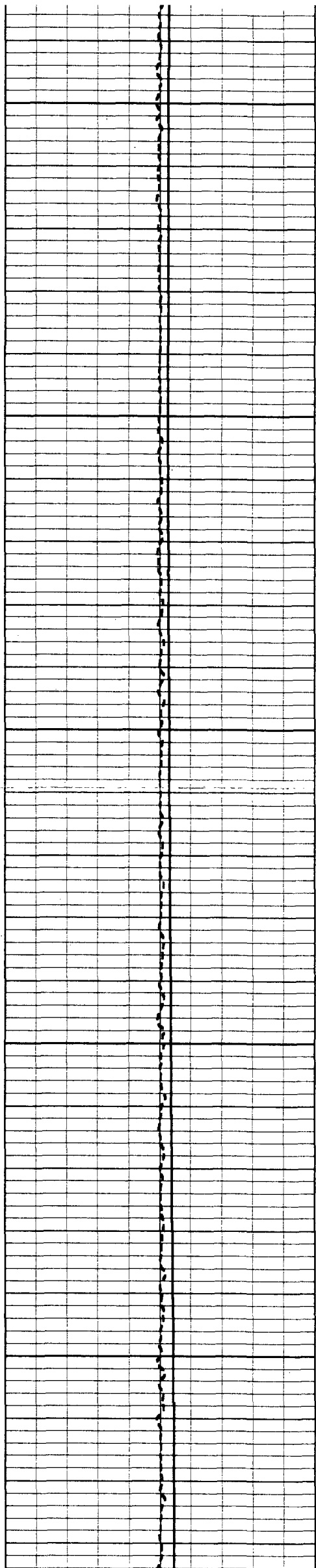
102.4

102.5

1200

102.7

102.9



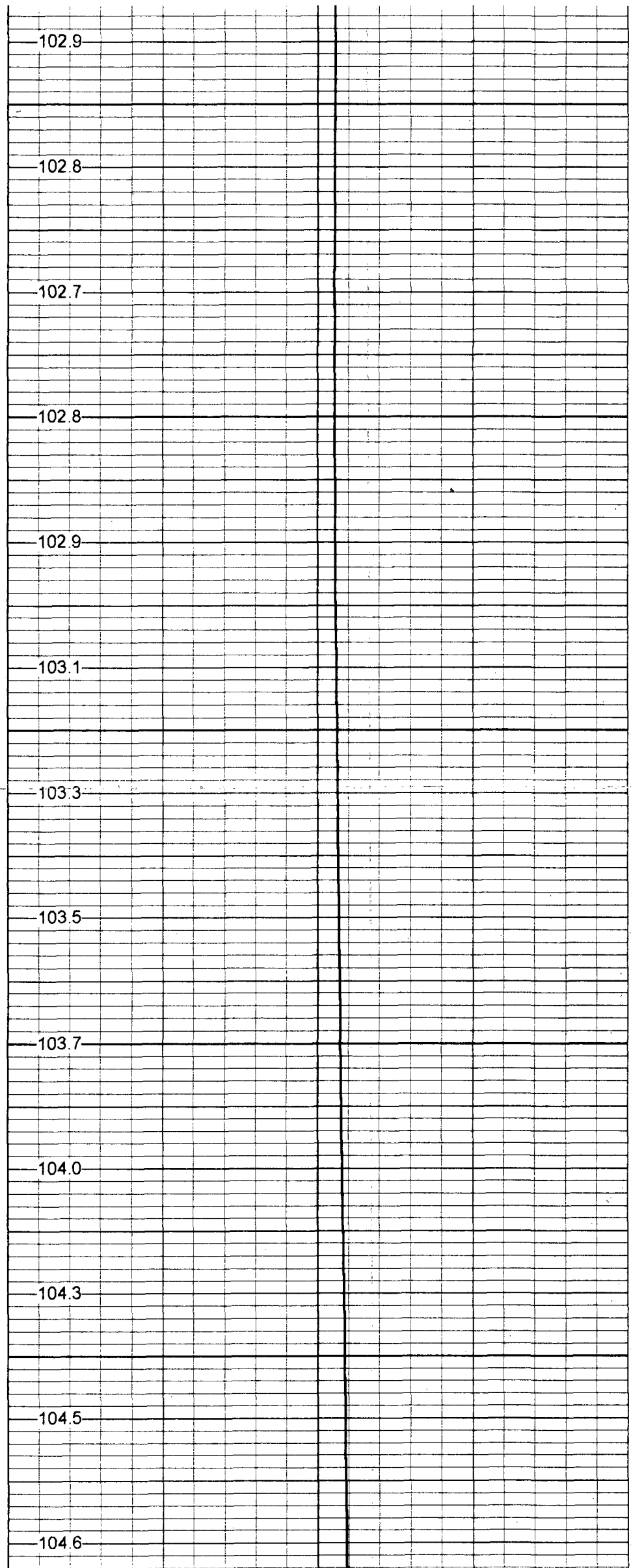
1250

1300

1350

1400

1450



102.9

102.8

102.7

102.8

102.9

103.1

103.3

103.5

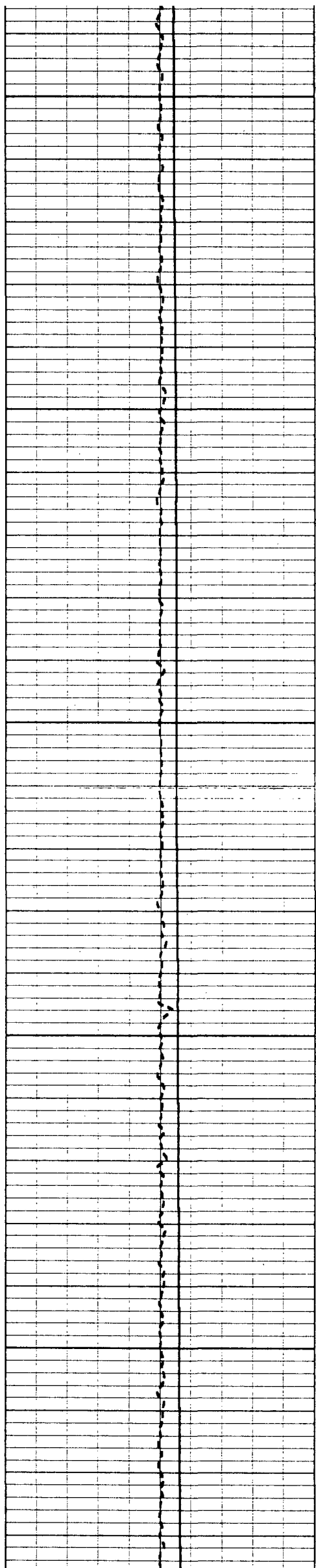
103.7

104.0

104.3

104.5

104.6



1500

104.7

104.9

105.0

1550

105.2

105.3

1600

105.3

105.5

105.7

1650

105.9

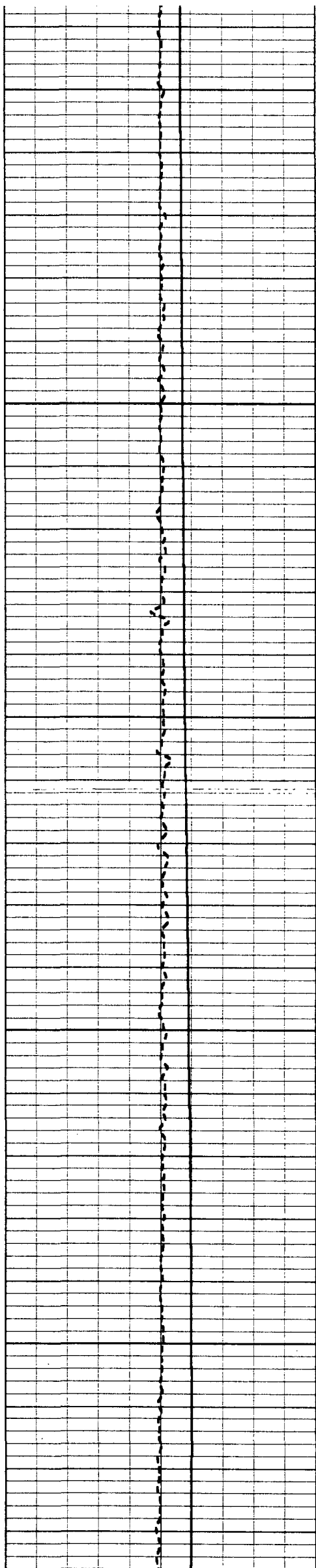
106.1

1700

106.3

106.5





1750

1800

1850

1900

1950

106.7

106.9

107.1

107.4

107.5

107.8

108.3

108.7

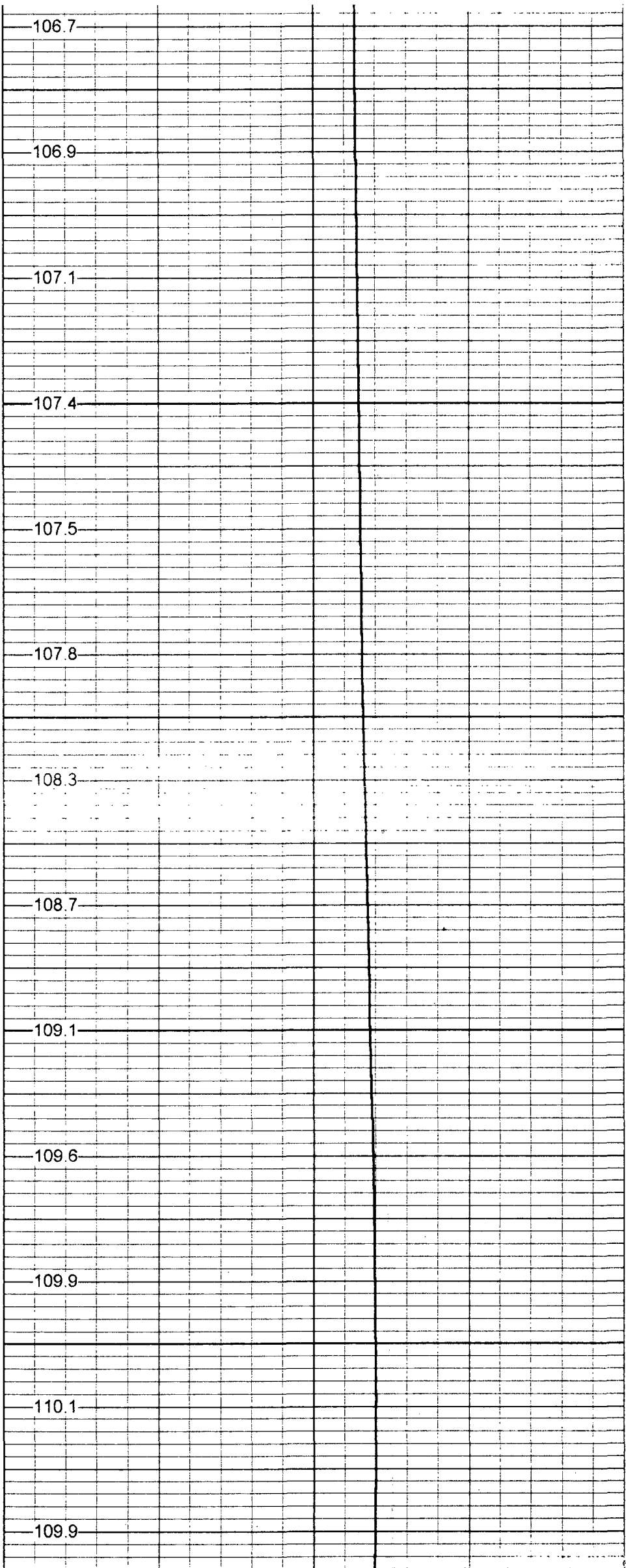
109.1

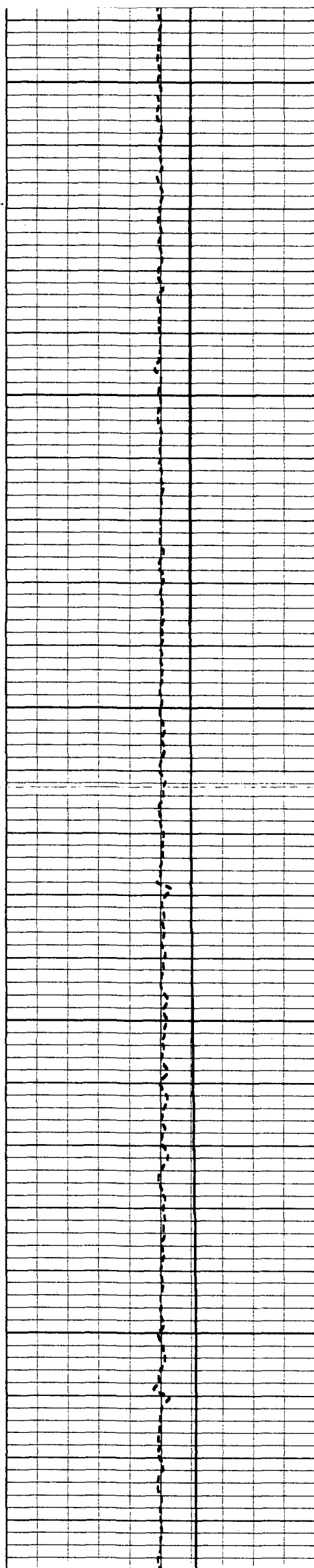
109.6

109.9

110.1

109.9





2000

109.7

109.6

109.6

2050

109.5

109.6

2100

109.8

110.0

110.3

2150

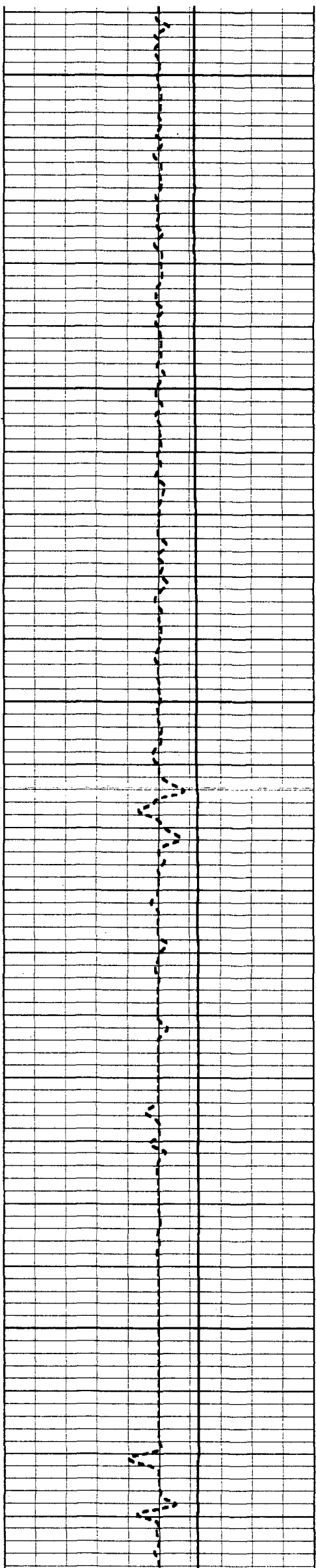
110.8

111.2

2200

111.5

111.5



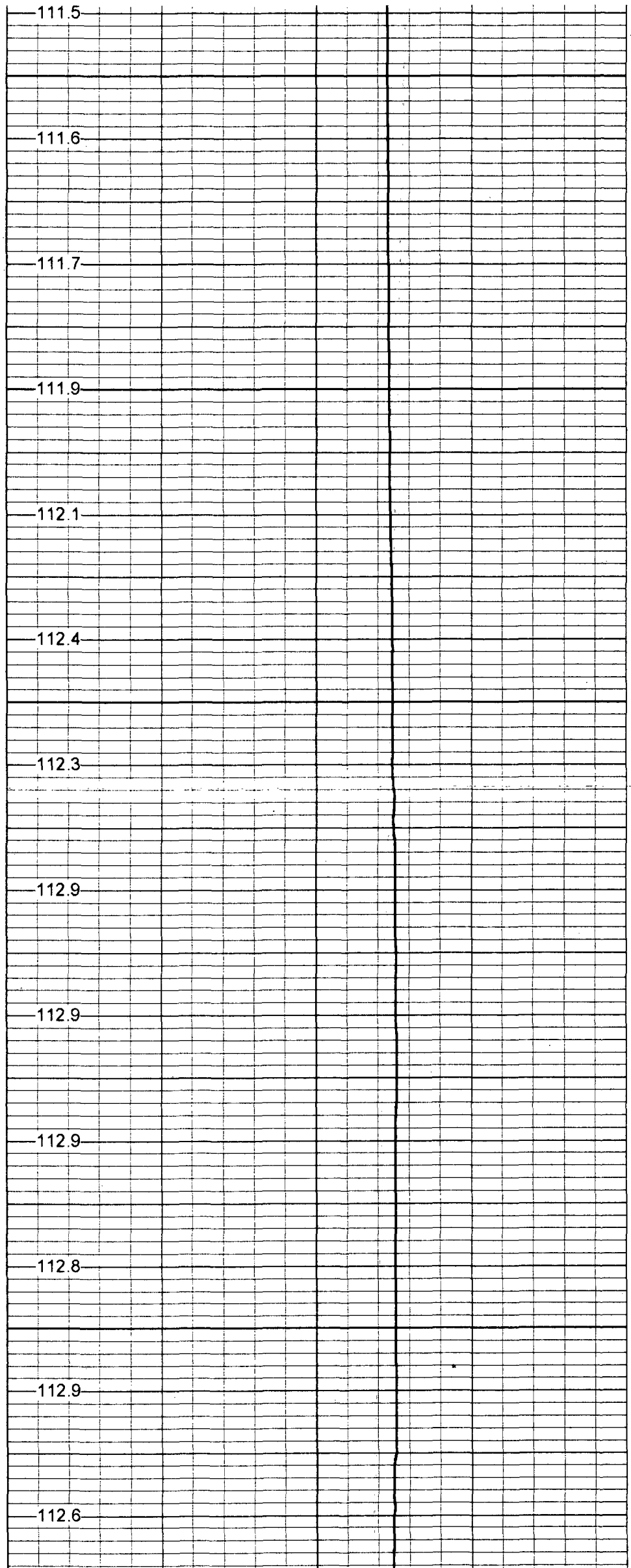
2250

2300

2350

2400

2450



111.5

111.6

111.7

111.9

112.1

112.4

112.3

112.9

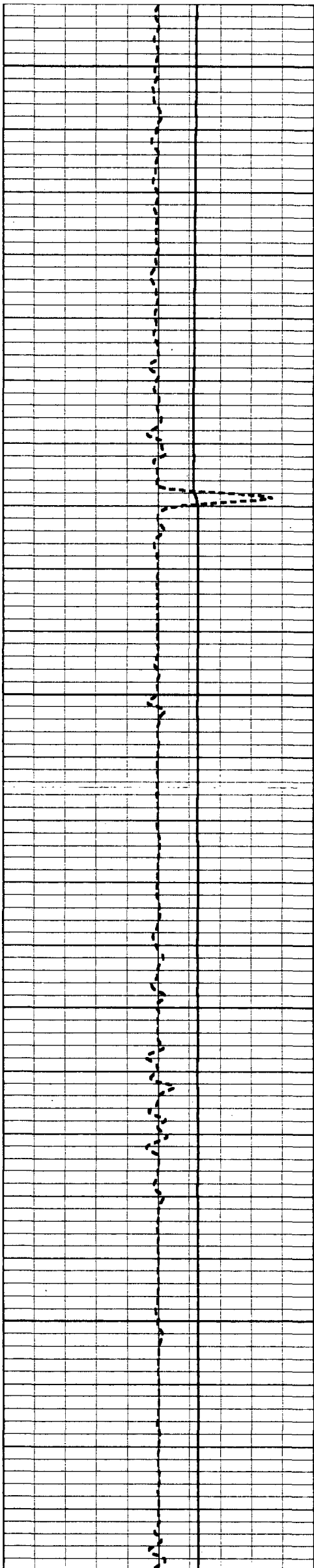
112.9

112.9

112.8

112.9

112.6



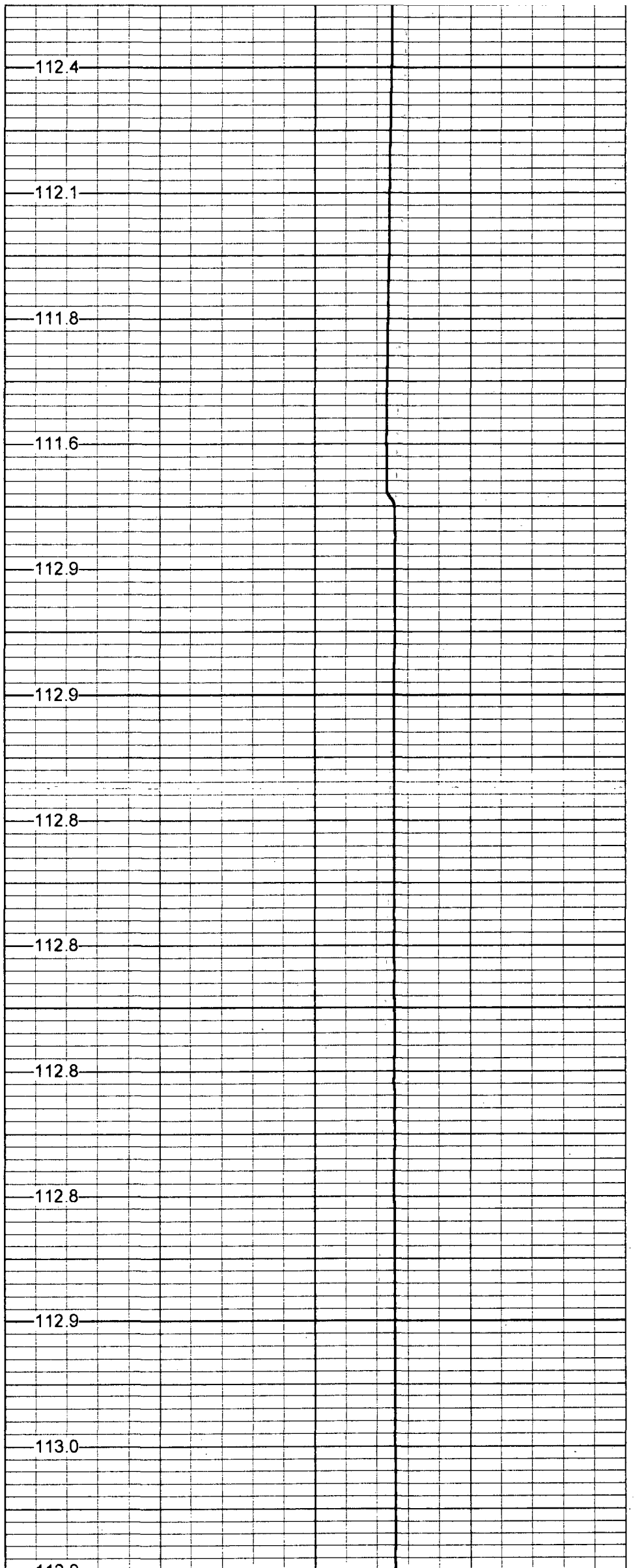
2500

2550

2600

2650

2700



112.4

112.1

111.8

111.6

112.9

112.9

112.8

112.8

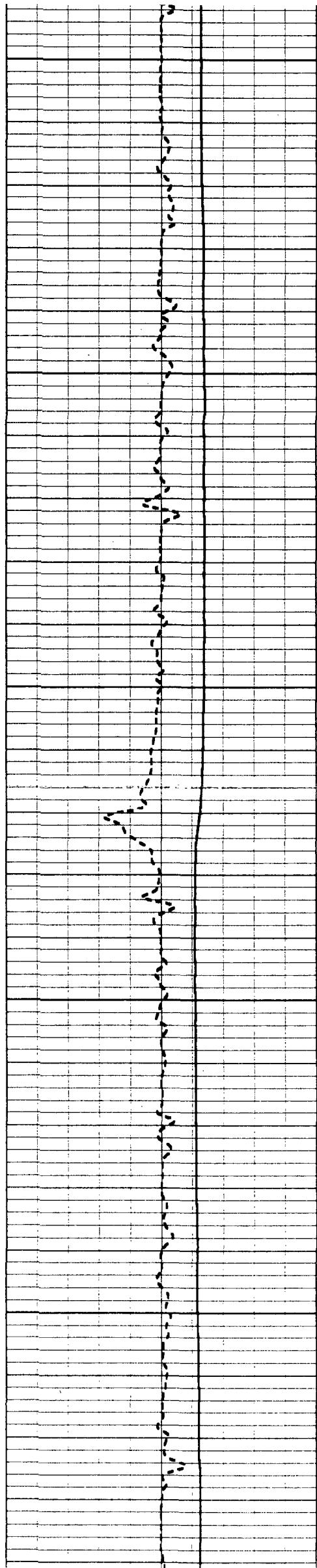
112.8

112.8

112.9

113.0

113.0



2750

113.0

113.7

2800

114.0

114.0

114.0

2850

113.6

111.2

2900

111.1

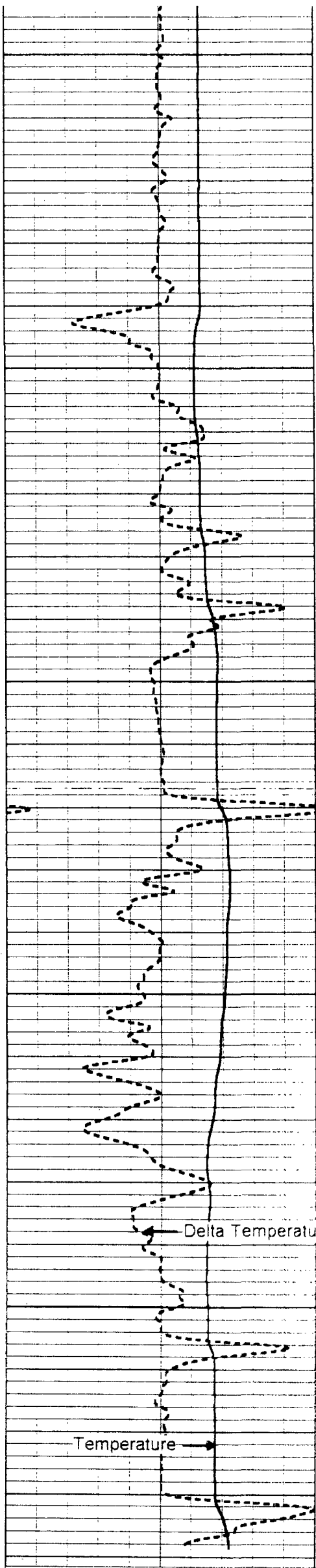
111.3

111.7

2950

112.2

112.8



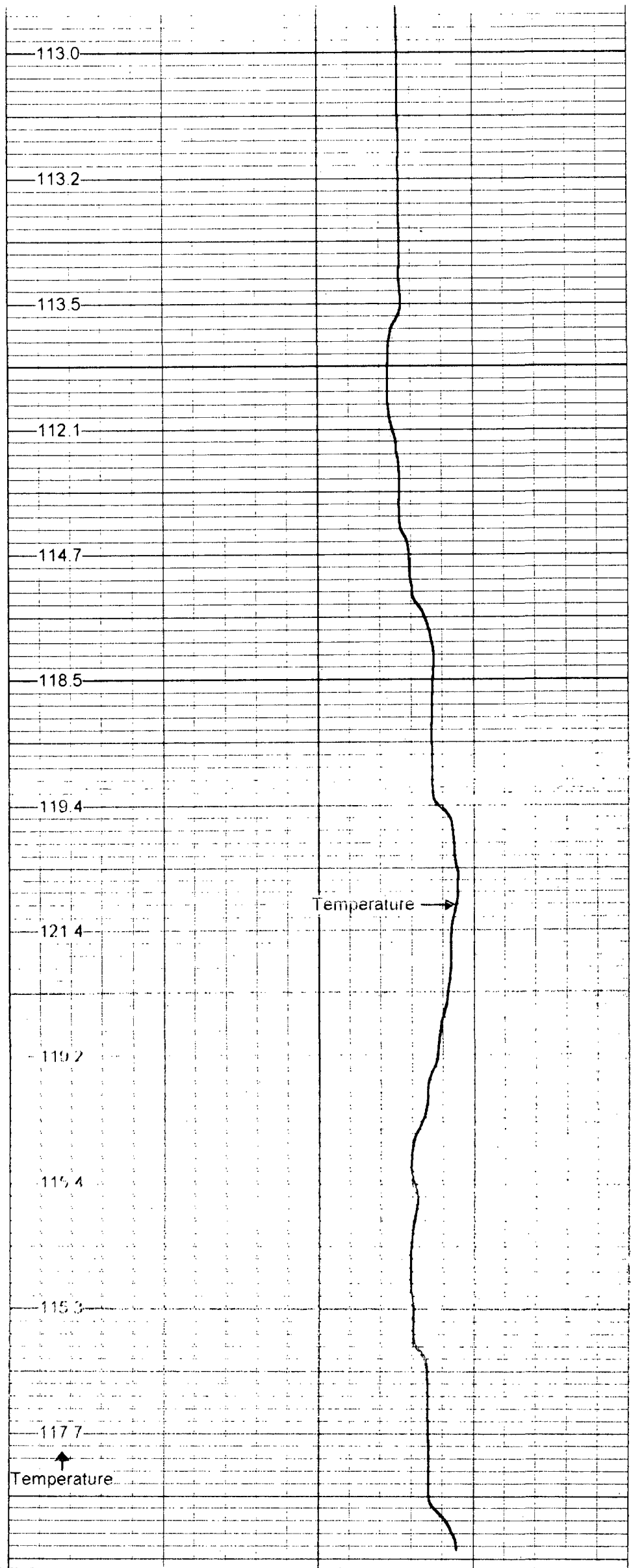
3000

3050

3100

3150

3200



113.0

113.2

113.5

112.1

114.7

118.5

119.4

121.4

119.2

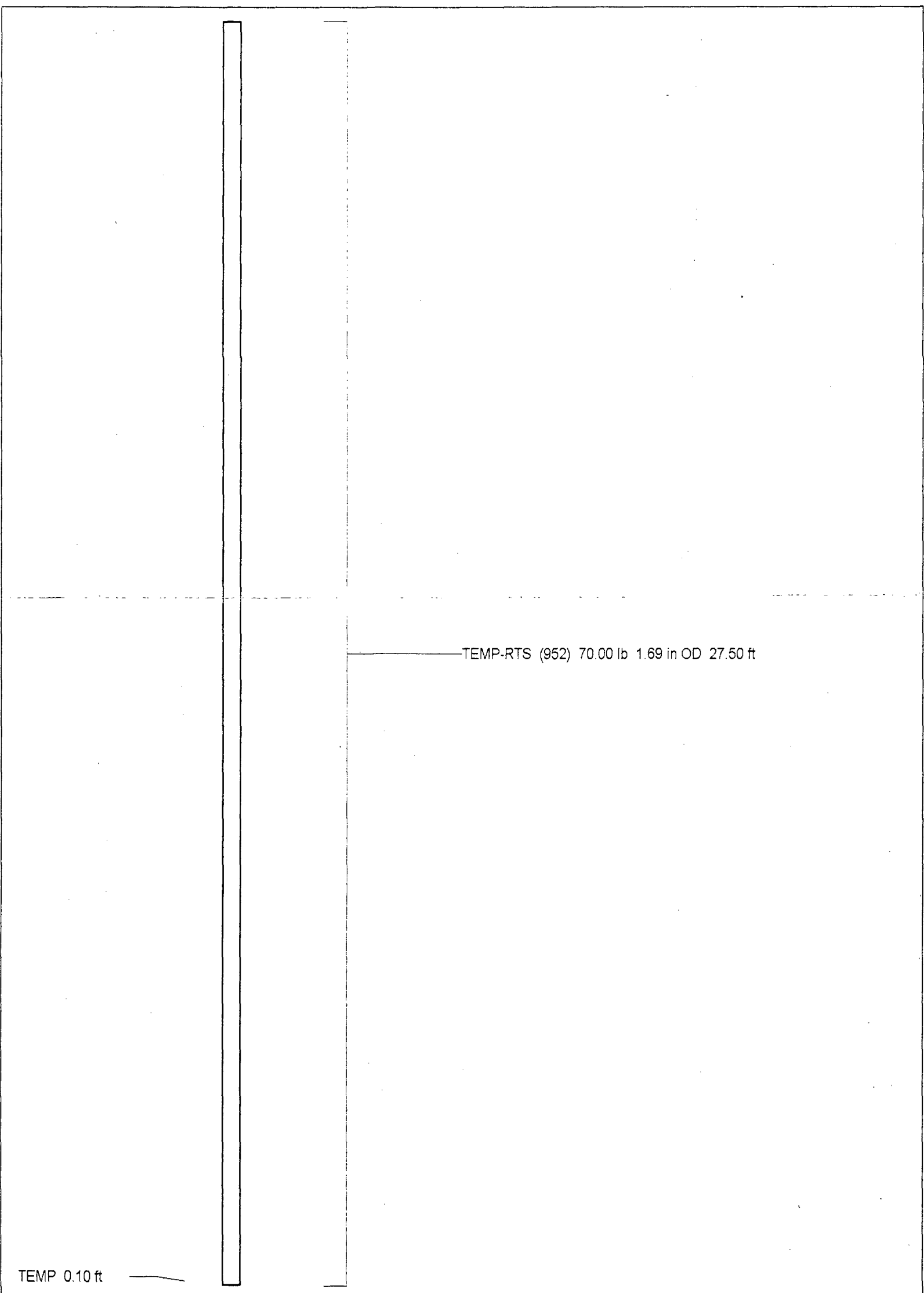
115.4

115.3

117.7

Temperature

-1 DELTA TEMPERATURE (degF) 1



TEMP-RTS (952) 70.00 lb 1.69 in OD 27.50 ft

TEMP 0.10 ft

Dataset: run1/pass13  
 Total Length: 27.50 ft  
 Total Weight: 70.00 lb  
 O.D.: 1.69 in

Temperature Calibration Report

Serial Number: 952  
 Tool Model: RTS  
 Performed: Wed Jan 05 13:13:35 2000

Point #	Reading		Reference	
1	337.895	cps	32	degF
2	1276.15	cps	160	degF
3		cps		degF