



FLORIDA
GEOPHYSICAL LOGGING, INC.

**HIGH RESOLUTION
TEMPERATURE
LOG**

Company WATER RESOURCE SLTNS.
Well IW - 1
Field PUNTA GORDA W.W.T.P.
Country CHARLOTTE
State/Pv FL

Company WATER RESOURCE SOLUTIONS INC.
Well IW - 1
Field PUNTA GORDA W.W.T.P.
Country CHARLOTTE State/Pv FLORIDA

Location
NW 1/4, NE 1/4 : S7, T41S, R24E

Permanent Datum PAD Elevation 24'
Log Measured From PAD
Drilling Measured From PAD

Other Services
RTS

Elevation
K.B. 27'
D.F. 27'
G.L. 24'

Date 11/28/00
Run Number THIRTEEN
Depth Driller 2850'
Depth Logger 2850'
Bottom Logged Interval 2850'
Top Log Interval SURFACE
Open Hole Size 18.5"
Type Fluid WATER
Density / Viscosity NA
Max. Recorded Temp. 87 DEGF
Estimated Cement Top NA
Time Well Ready ON ARRIVAL
Time Logger on Bottom 0830
Equipment Number 103
Location FT. MYERS
Recorded By DENISON
Witnessed By N. KUGLER

Borehole Record		Tubing Record	
Run Number	Bit Size	From	To
ONE	46.5"	SURFACE	507'
THREE	36.5"	CASING	1716'
FIVE	28.5"	CASING	2505'
SEVEN	18.5"	CASING	2850'

Casing Record		Tubing Record	
Surface String	Size	Top	Bottom
Surface String	48"	SURFACE	42'
Prod. String	38"	SURFACE	500'
Production String	30"	SURFACE	1710'
Liner	20"	SURFACE	2500'

<<< Fold Here >>>

All interpretations are opinions based on inferences from electrical or other measurements and we cannot and do not guarantee the accuracy or correctness of any interpretation, and we shall not, except in the case of gross or willful negligence on our part, be liable or responsible for any loss, costs, damages, or expenses incurred or sustained by anyone resulting from any interpretation made by any of our officers, agents or employees. These interpretations are also subject to our general terms and conditions set out in our current Price Schedule.

Comments



TEMPERATURE

Database File: pgiw1rts.db
Dataset Pathname: pass3
Presentation Format: temp.prs

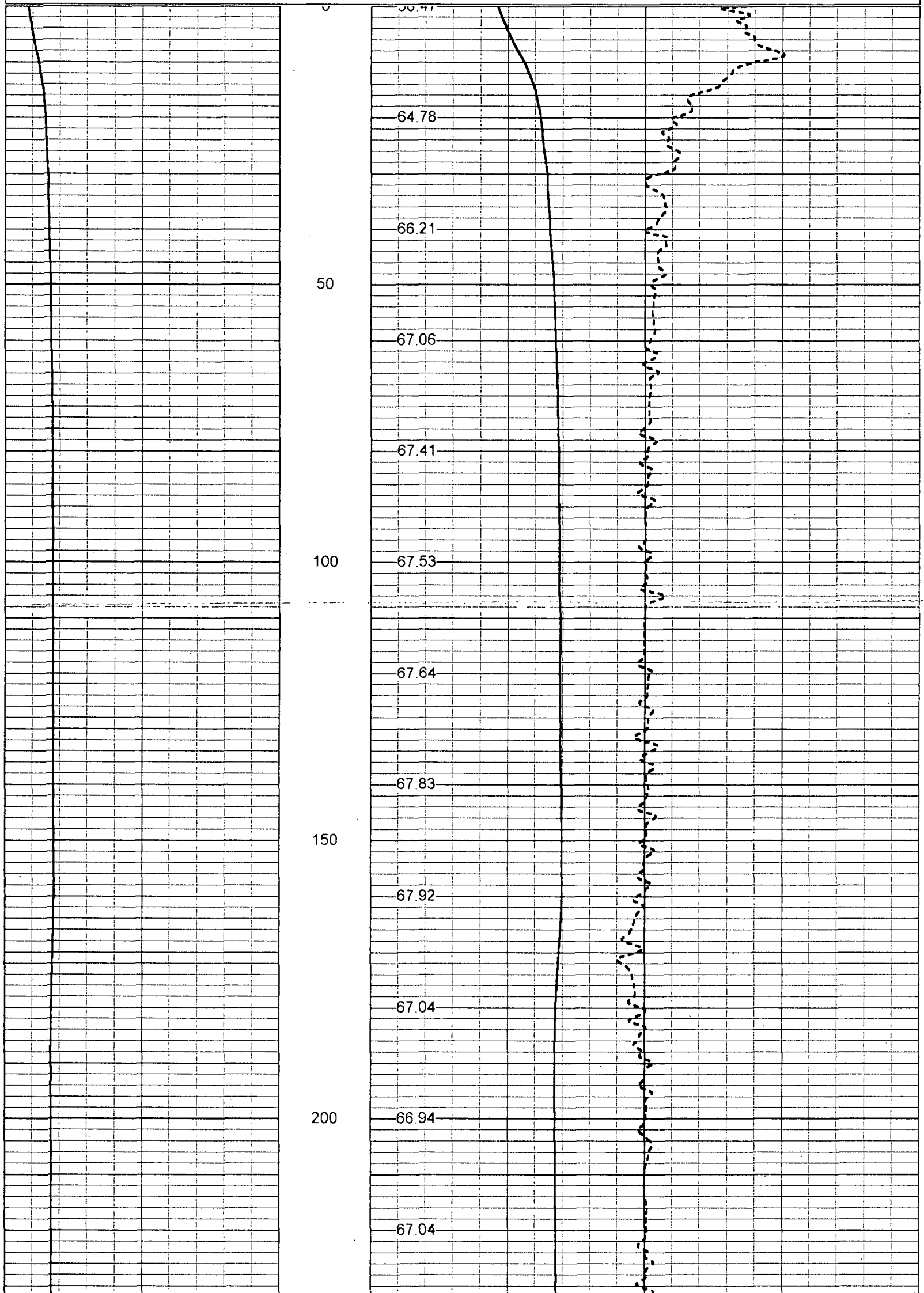
Charted by:

Depth in Feet scaled 1:240

50 TEMPERATURE (degF) 150

40 TEMPERATURE (degF) 120

-1 DELTA TEMPERATURE (degF) 1



250

67.16

67.25

67.41

300

67.45

67.50

67.61

350

67.73

67.84

400

67.94

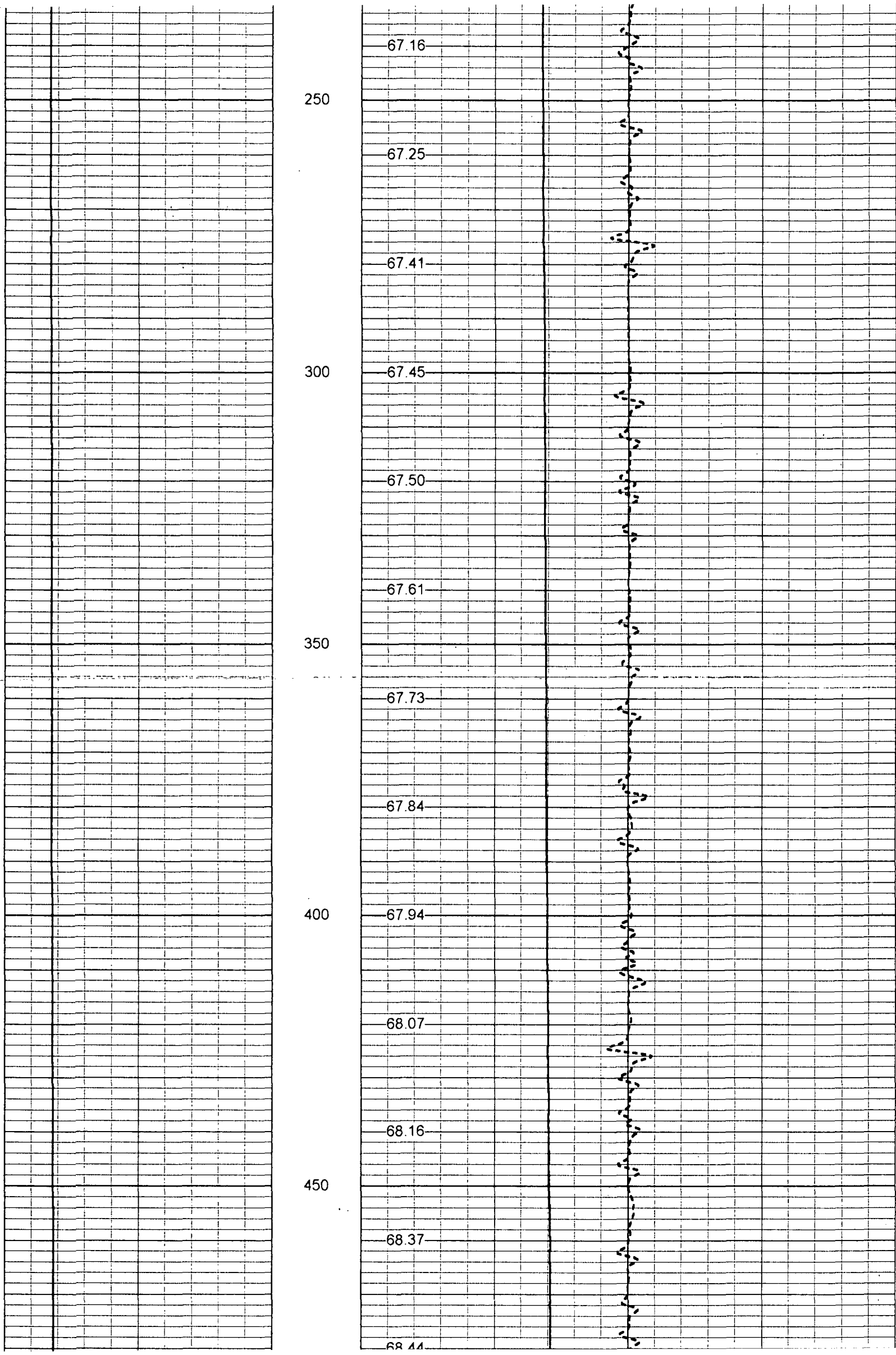
68.07

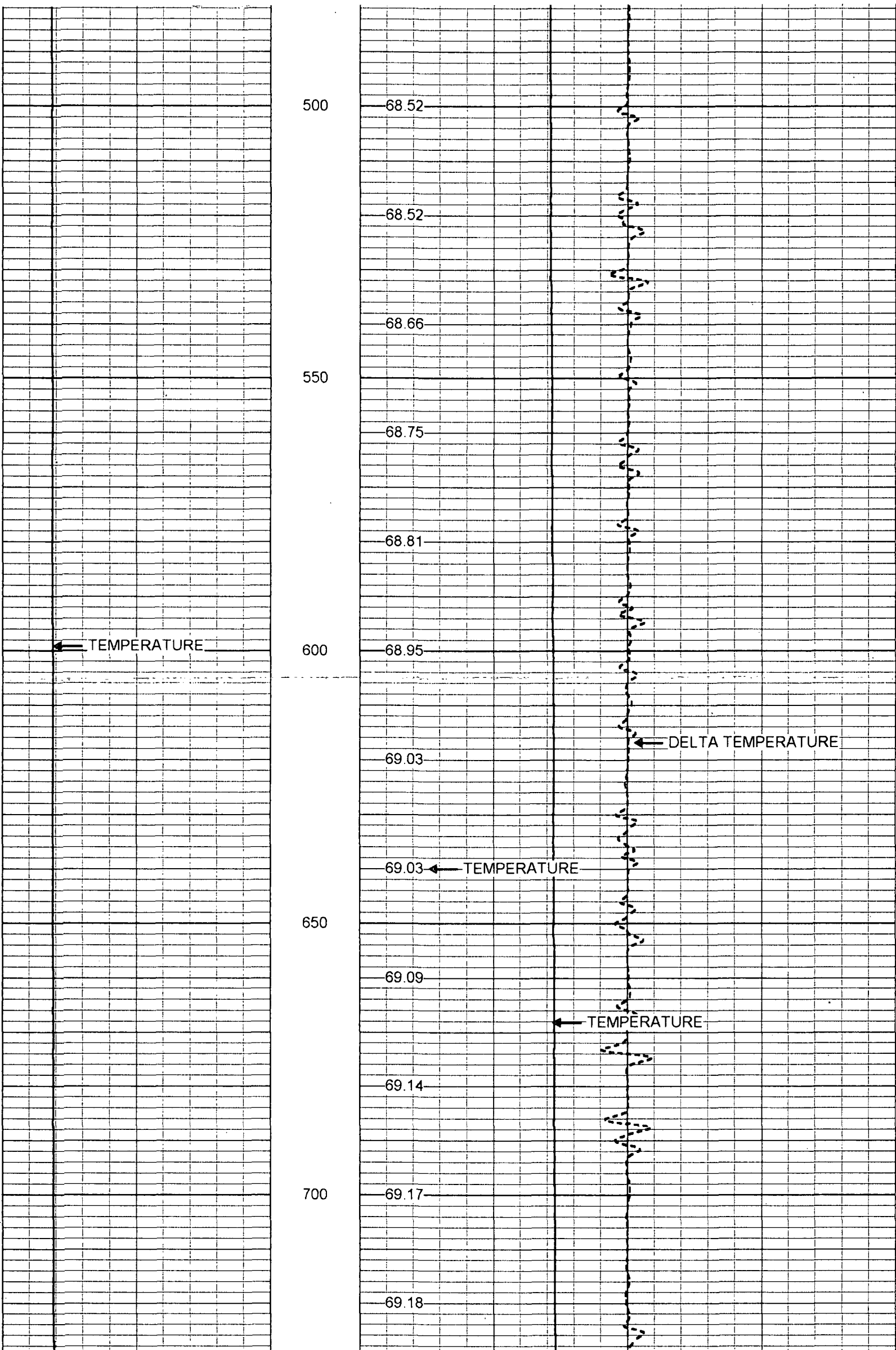
68.16

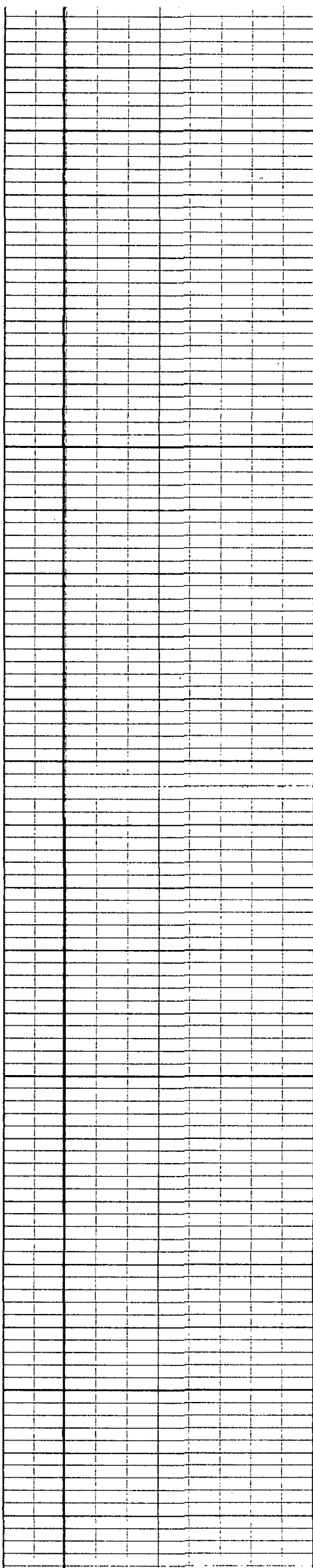
450

68.37

68.44







750

69.30

69.32

69.28

800

69.30

69.36

69.39

850

69.49

69.53

900

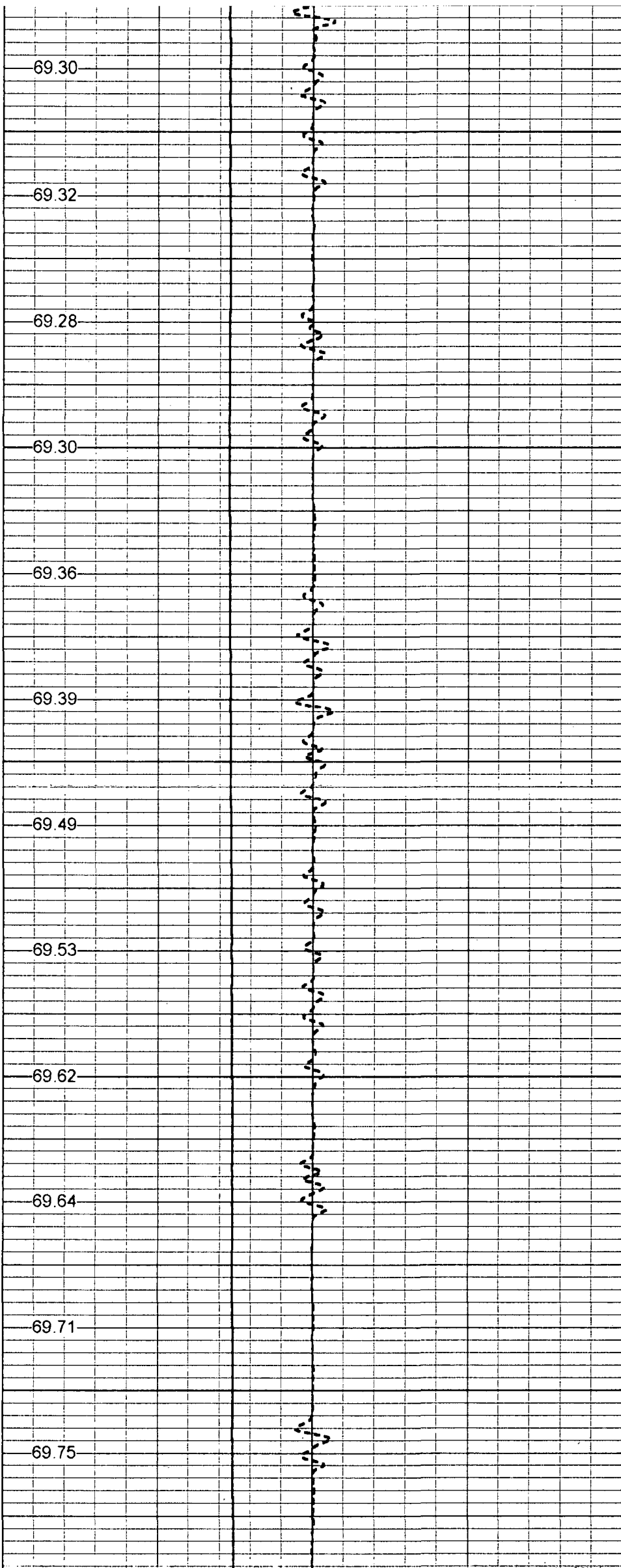
69.62

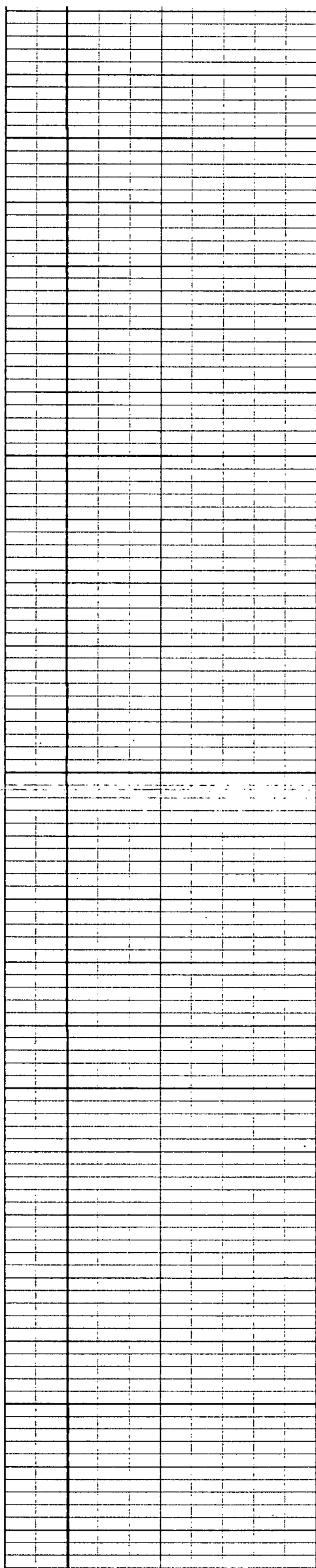
69.64

69.71

950

69.75





1000

69.82

69.89

69.90

70.00

1050

70.03

70.05

1100

70.03

70.12

70.27

1150

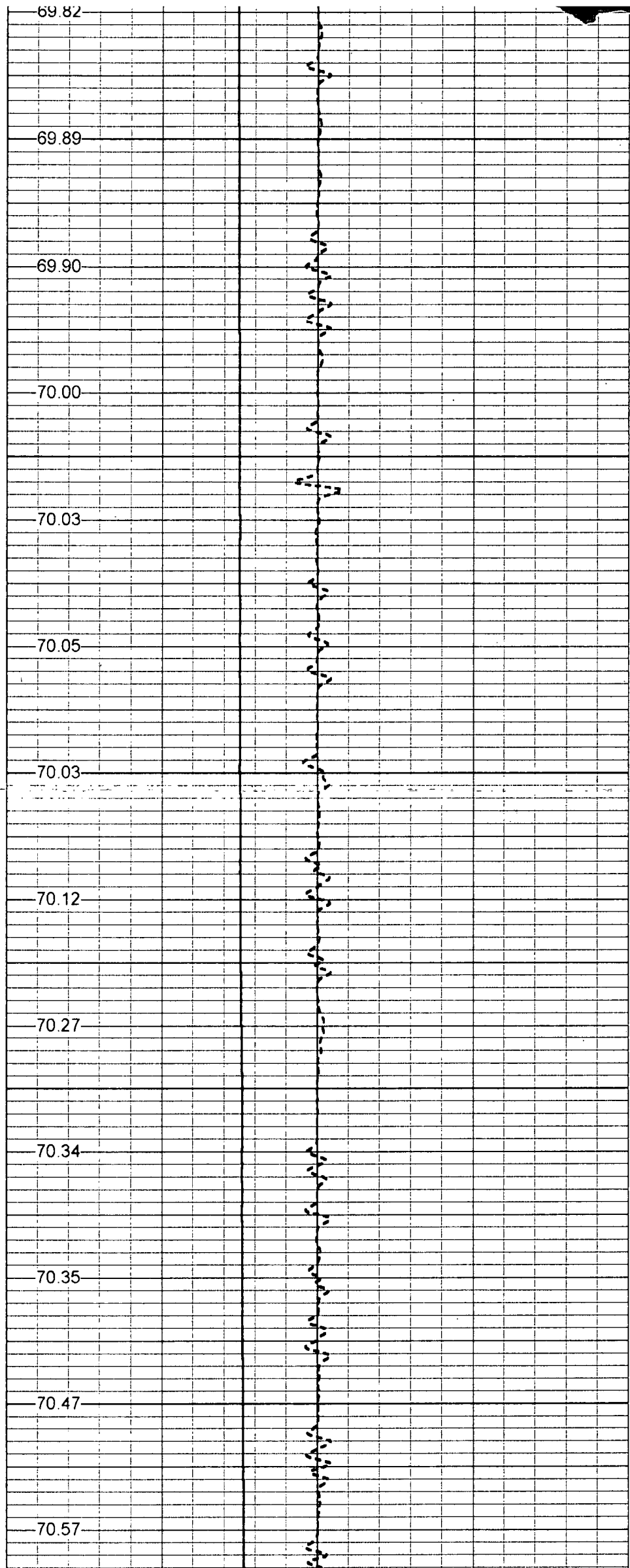
70.34

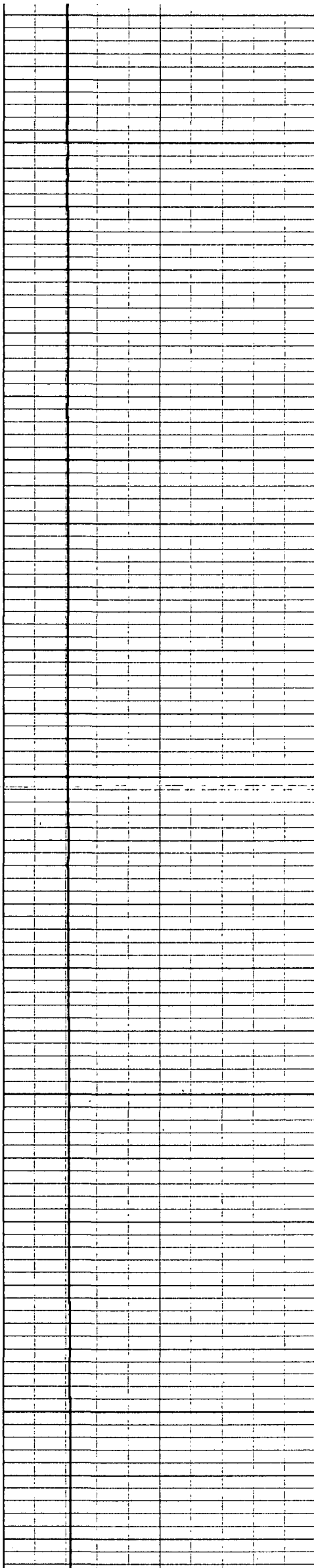
70.35

1200

70.47

70.57





1250

70.62

70.64

70.72

1300

70.76

70.86

70.77

1350

70.90

71.01

1400

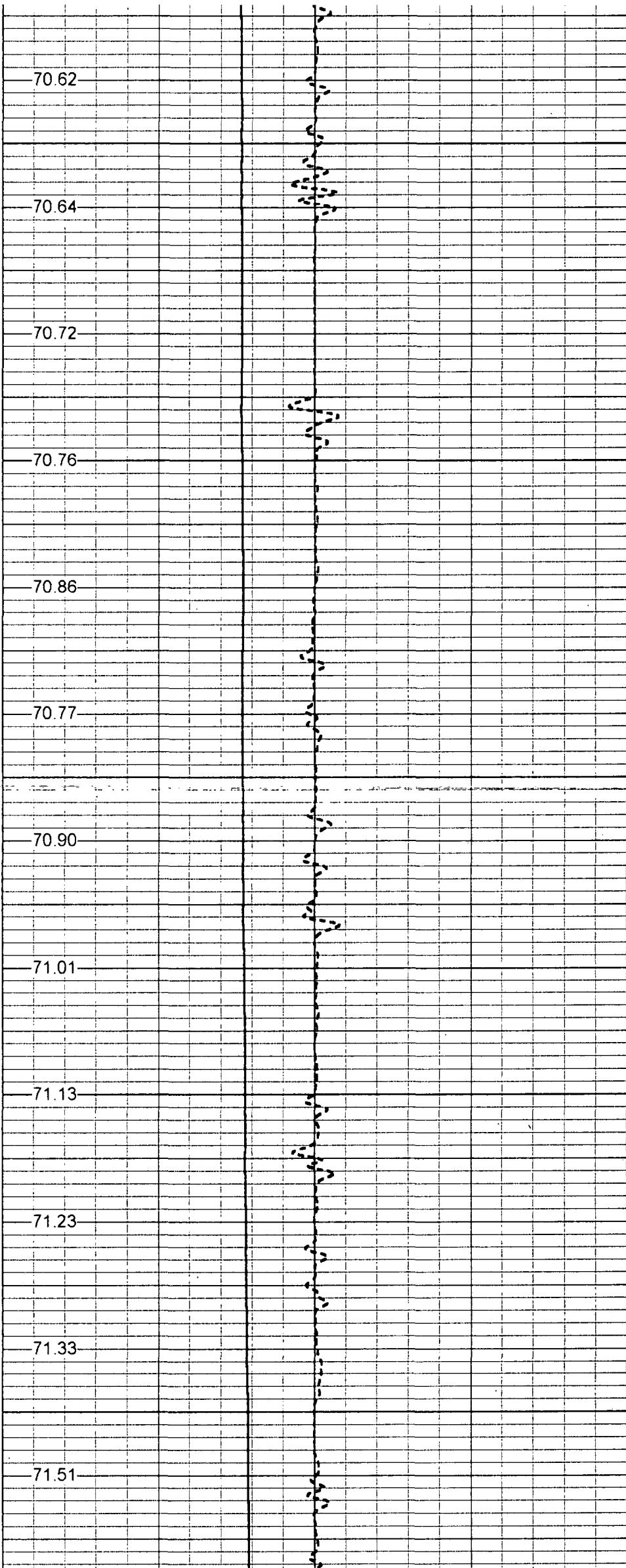
71.13

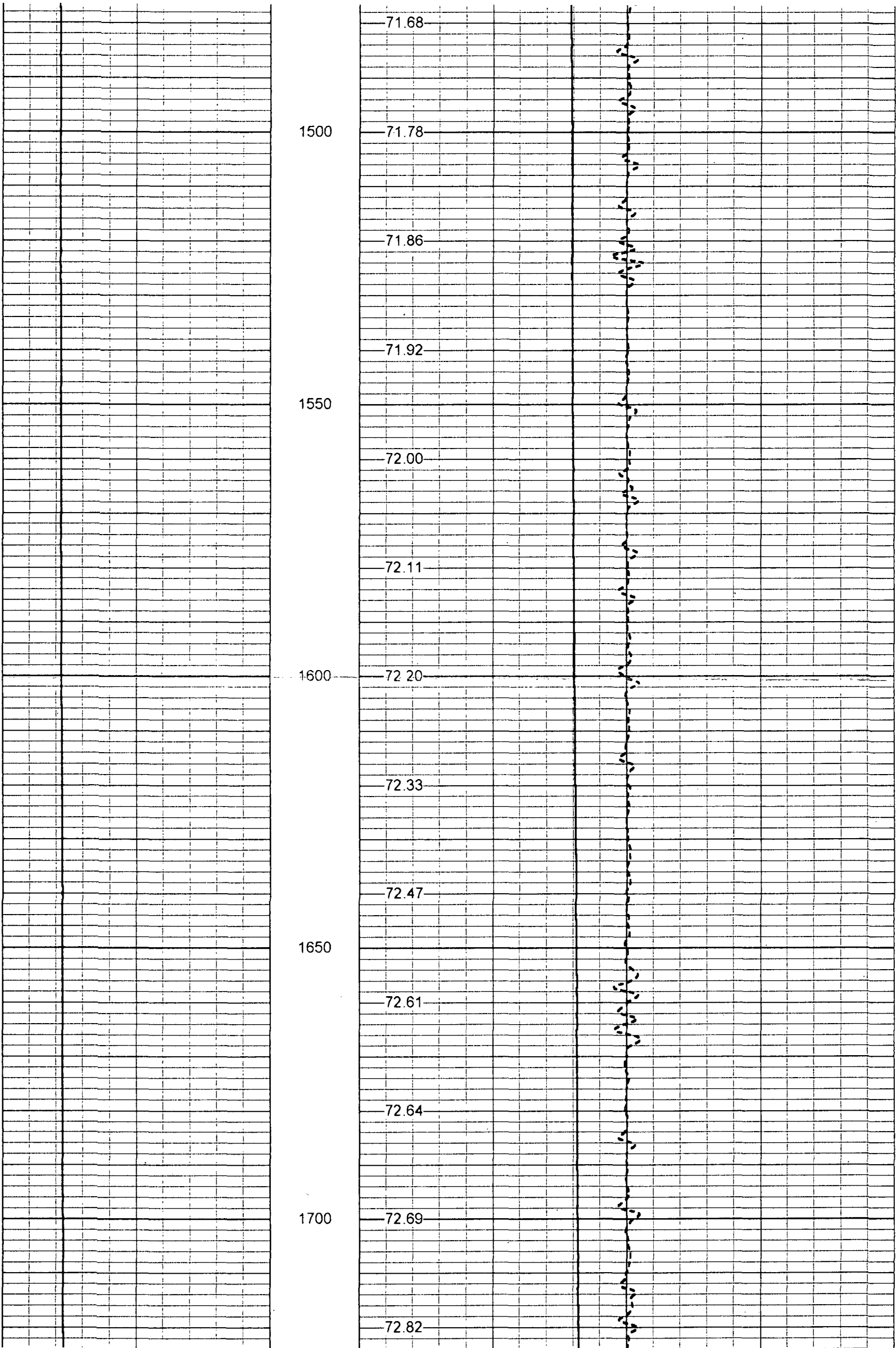
71.23

71.33

1450

71.51





1750

72.95

73.00

72.99

1800

72.95

73.19

73.26

1850

73.49

73.33

1900

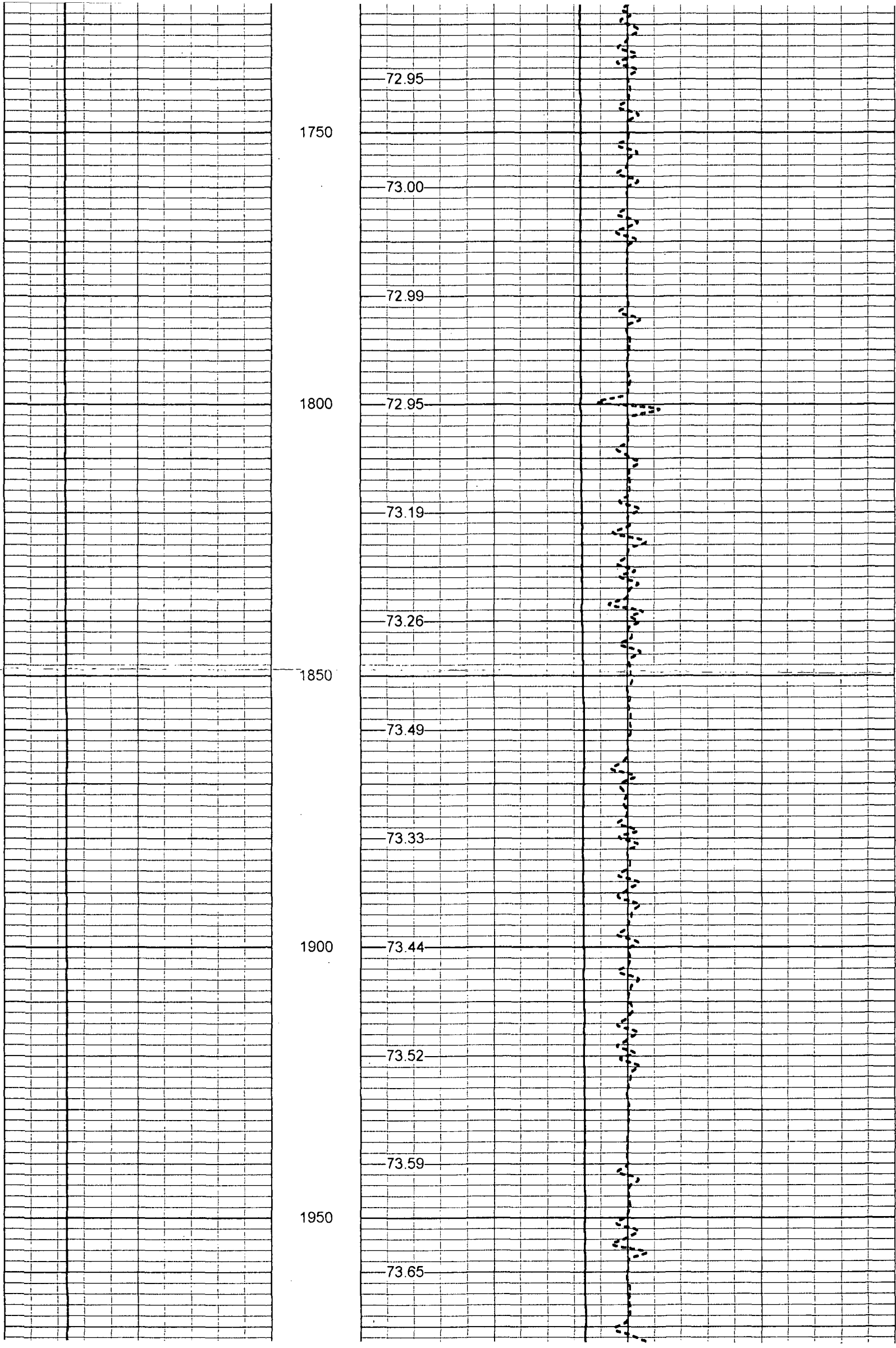
73.44

73.52

73.59

1950

73.65



2000

73.81

74.01

74.11

74.17

2050

74.32

74.42

2100

74.45

74.48

74.56

2150

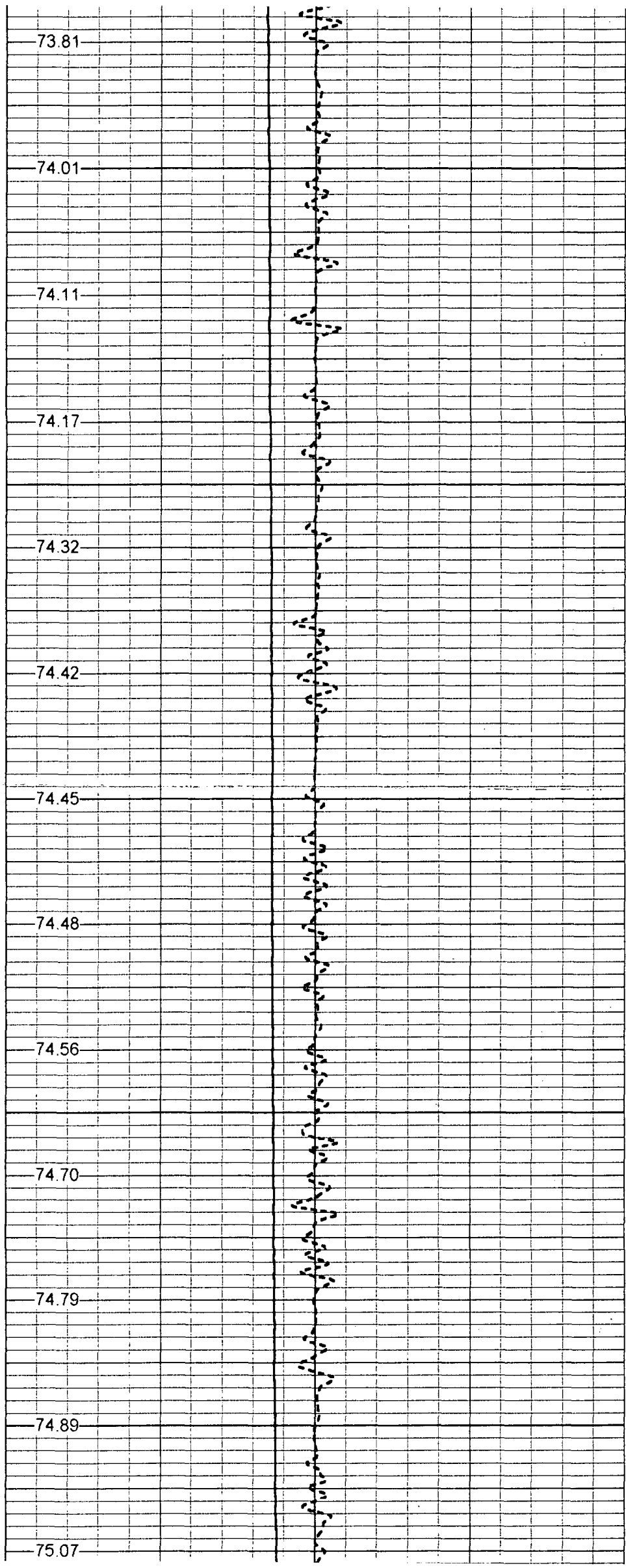
74.70

74.79

2200

74.89

75.07



75.29

2250

75.39

75.38

2300

75.29

75.44

75.57

2350

75.78

75.73

2400

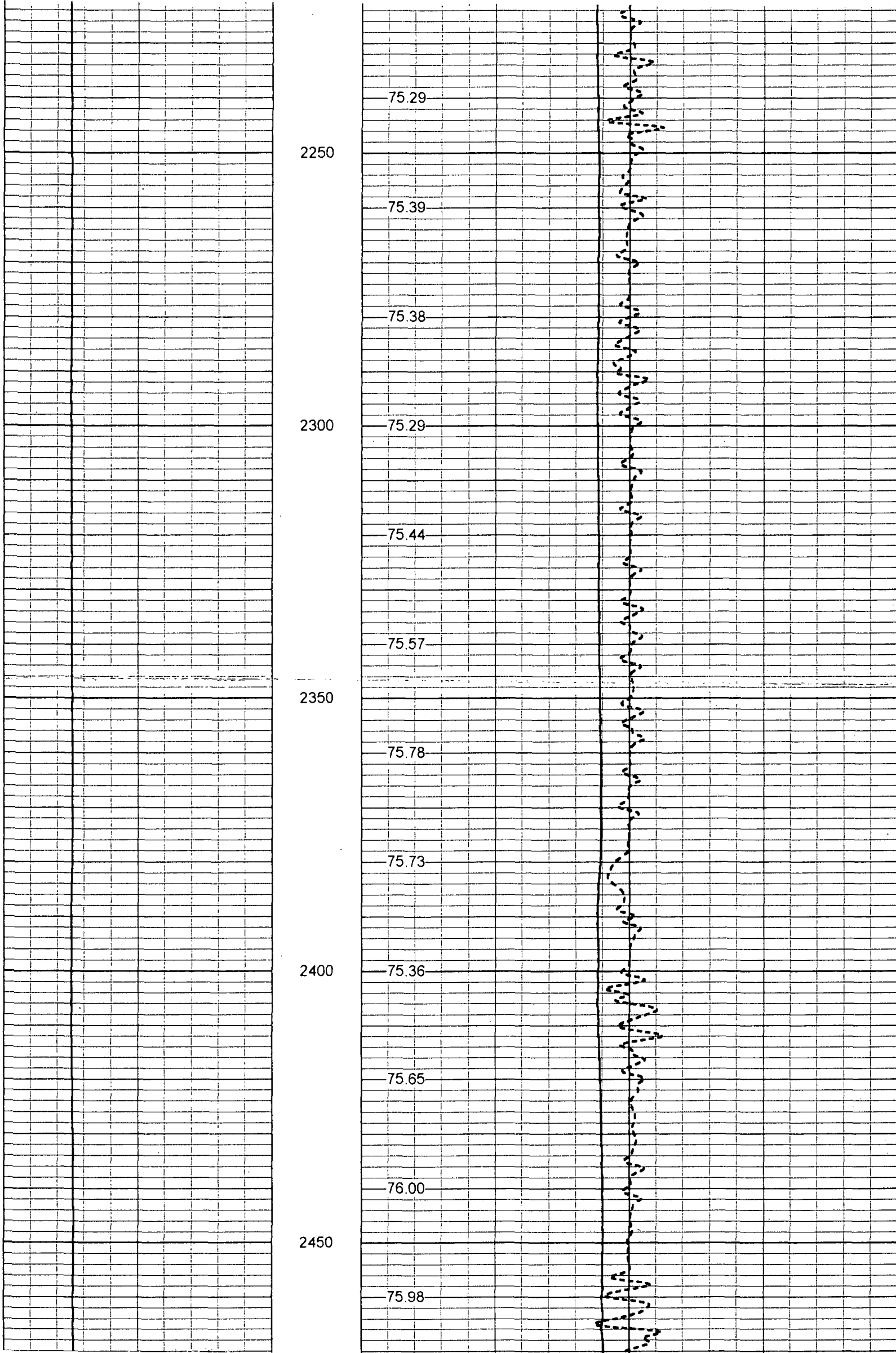
75.36

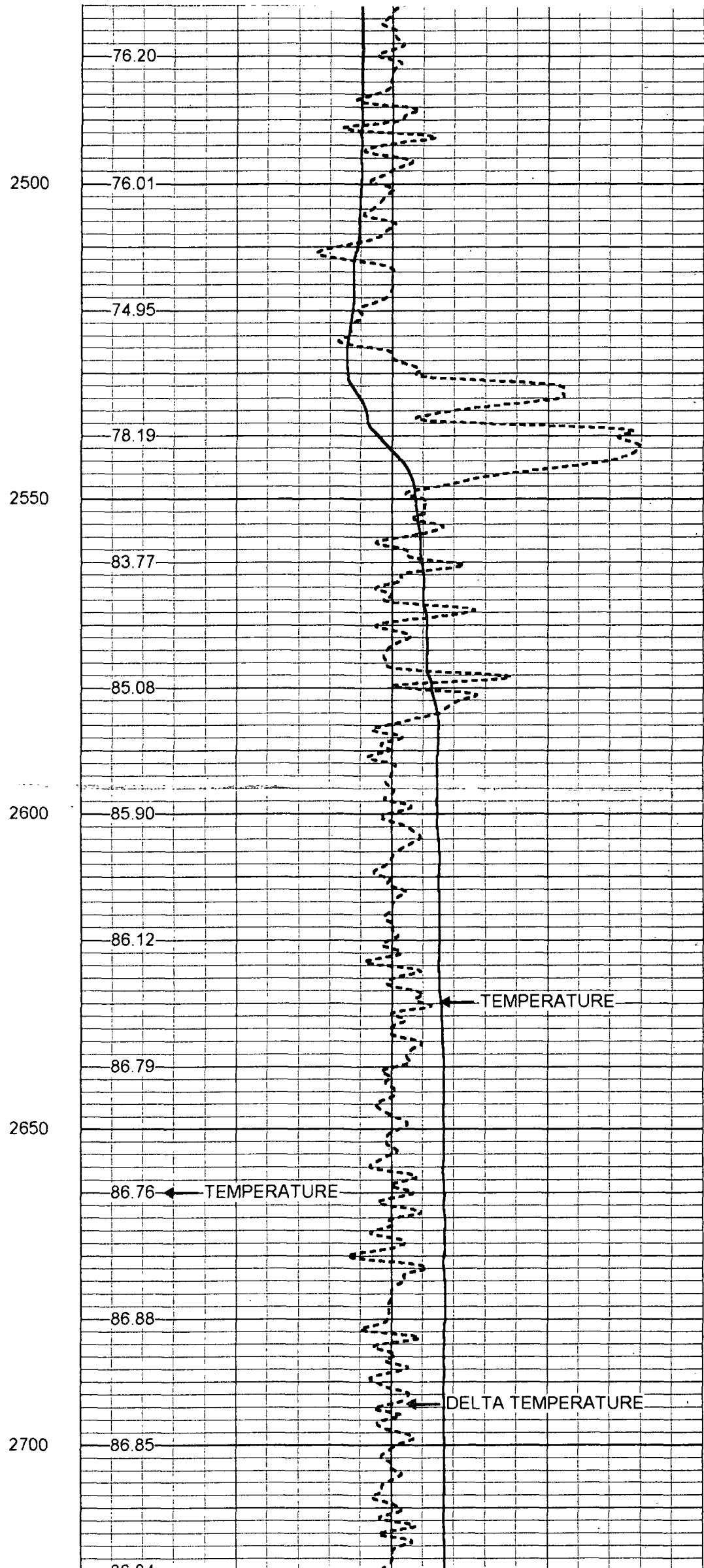
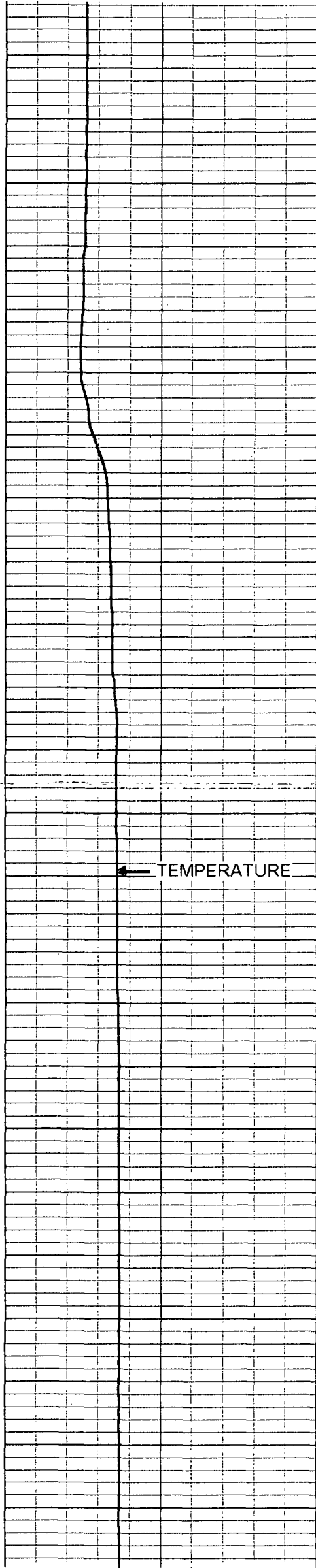
75.65

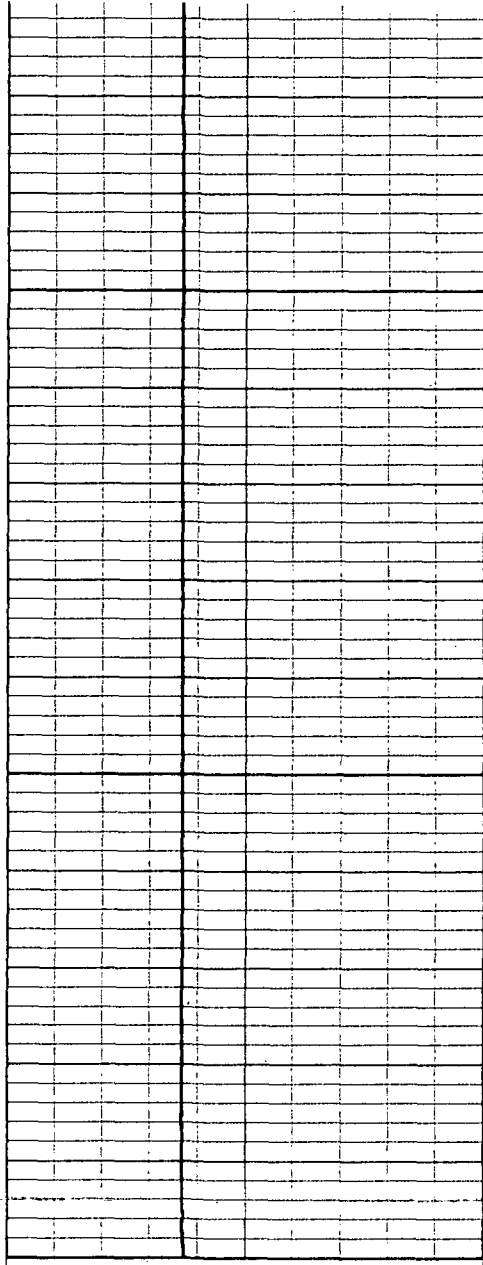
76.00

2450

75.98





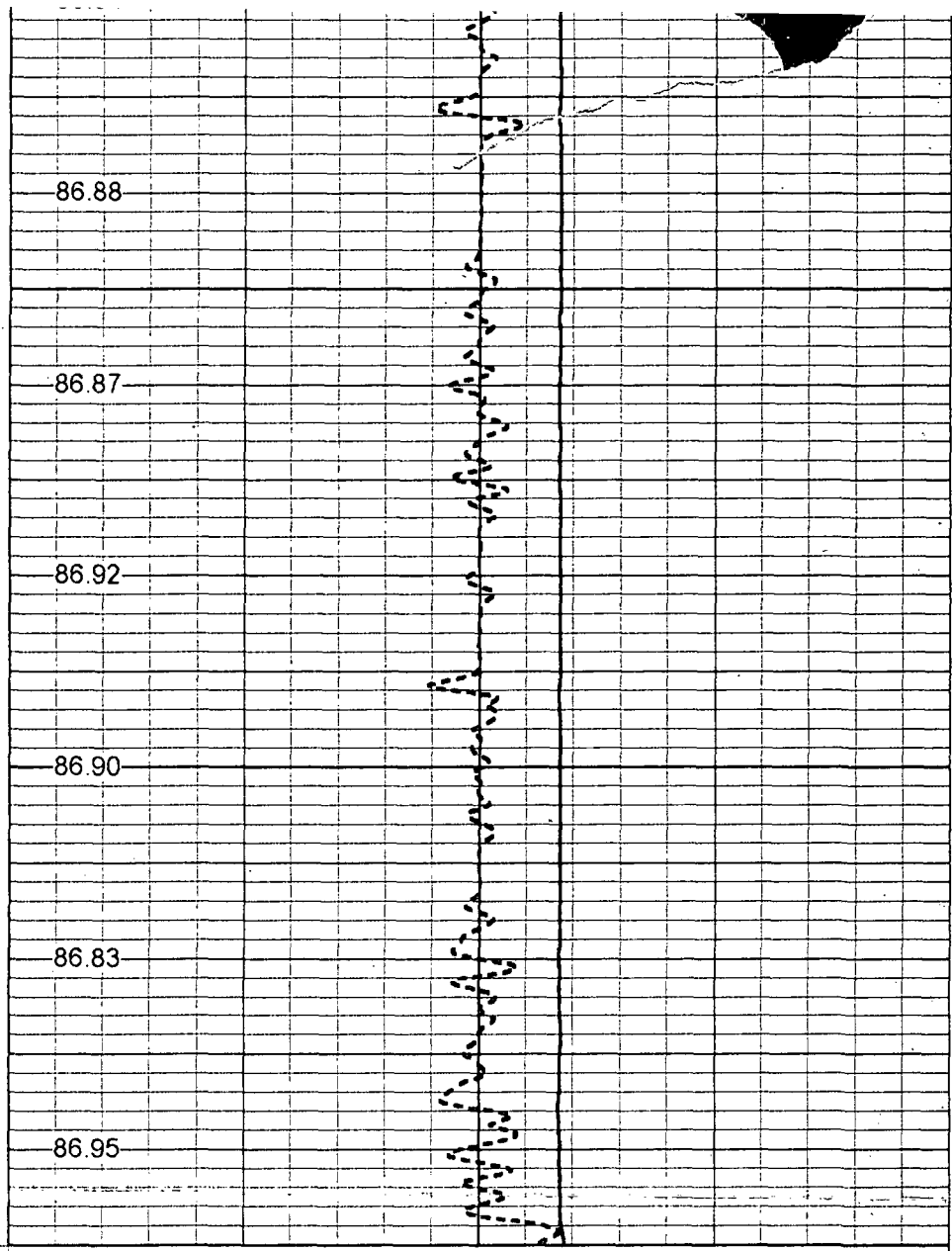


50 TEMPERATURE (degF) 150

2750

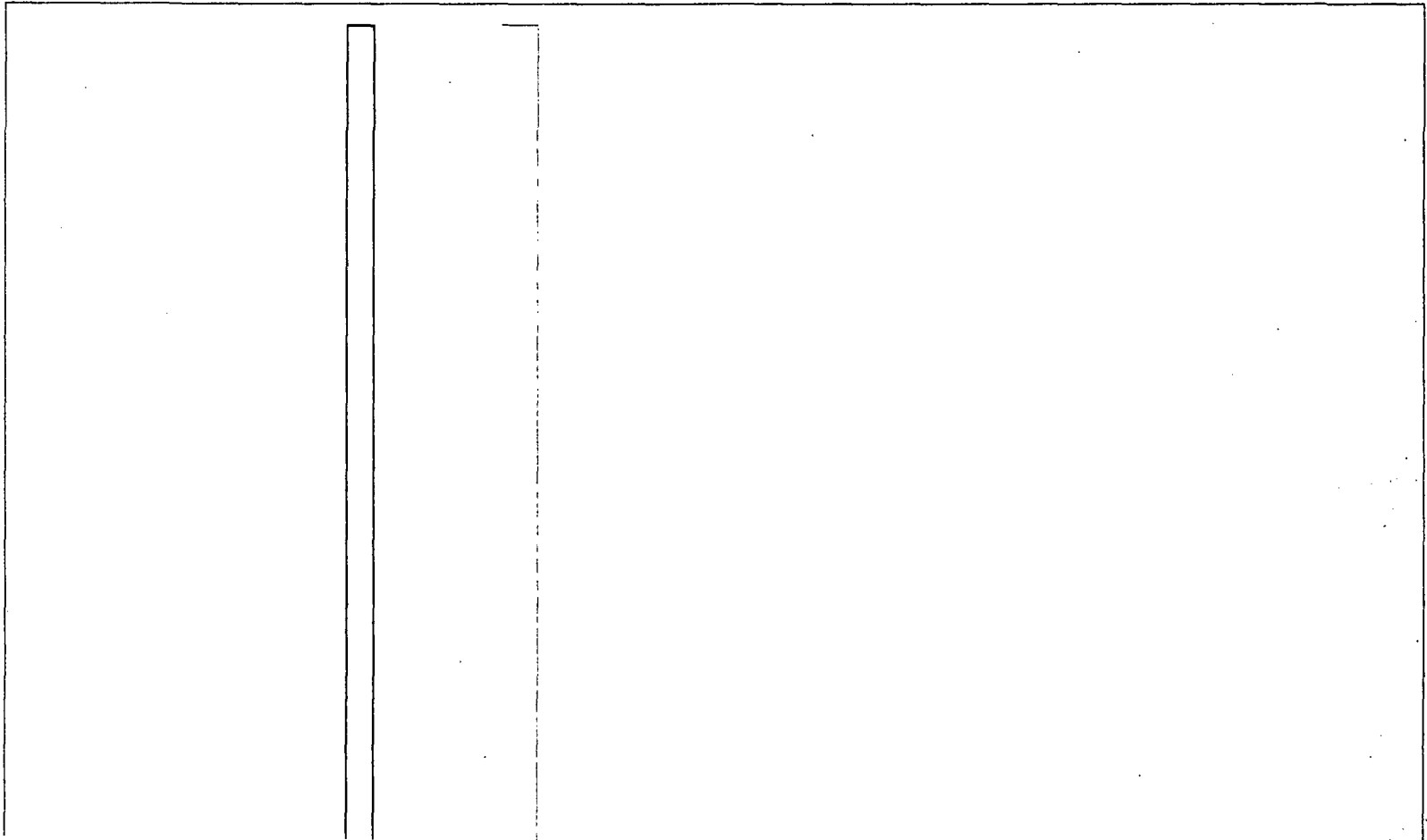
2800

2850



40 TEMPERATURE (degF) 120

-1 DELTA TEMPERATURE (degF) 1



TEMP-RTS (953) 70.00 lb 1.69 in OD 25.50 ft

TEMP 0.10 ft

Dataset: run1/pass3
Total Length: 25.50 ft
Total Weight: 70.00 lb
O.D.: 1.69 in

Temperature Calibration Report

Serial Number: 953
Tool Model: RTS
Performed: Thu Jul 27 11:04:19 2000

Point #	Reading		Reference	
1	441.331	cps	37	degF
2	2440.32	cps	160	degF
3		cps		degF