



**FLUID RESISTIVITY  
TEMPERATURE  
LOG**

|                                    |               |  |               |
|------------------------------------|---------------|--|---------------|
| Company Diversified Drilling Corp. |               | Company Diversified Drilling Corporation     |               |
| Well IAMW                          |               | Well IAMW                                    |               |
| Field Punta Gorda                  |               | Field Punta Gorda                            |               |
| County Lee                         |               | County Charlotte                             |               |
| State/Prv Florida                  |               | State/Prv Florida                            |               |
| Location                           |               | City of Punta Gorda<br>Water Treatment Plant |               |
| Permanent Datum                    |               | G.L.   | Elevation     |
| Log Measured From                  |               | G.L.   | K.B.          |
| Drilling Measured From             |               | G.L.   | D.F.          |
|                                    |               |  | G.L.          |
| Other Services                     |               | XY/GR, DIL<br>FLOW, BHC<br>VIDEO             |               |
| Date                               | 20-MAR-2002   |  |               |
| Run Number                         | THREE         |  |               |
| Depth Driller                      | 440'          |  |               |
| Depth Logger                       | 384'          |  |               |
| Bottom Logged Interval             | 384'          |  |               |
| Top Log Interval                   | 300'          |  |               |
| Open Hole Size                     | 7"            |  |               |
| Type Fluid                         | WATER         |  |               |
| Density / Viscosity                | N/A/N/A       |  |               |
| Max. Recorded Temp.                | na            |  |               |
| Estimated Cement Top               | NA            |  |               |
| Time Well Ready                    | 08:30 3/20/02 |  |               |
| Time Logger on Bottom              | 12:30 3/20/02 |  |               |
| Equipment Number                   | MVGS-1        |  |               |
| Location                           | Ft. Myers     |  |               |
| Recorded By                        | S. Miller     |  |               |
| Witnessed By                       | Travis (DDC)  |  |               |
| Borehole Record                    |               | Tubing Record                                |               |
| Run Number                         | Bit           | From   | To            |
| ONE                                | 7.875"        | 40'  | 350'          |
| TWO                                | 1.5"          | 40'  | 350'          |
| THREE                              | 7"            | 350'   | 440'          |
| Casing Record                      | Size          | Wgt/Ft                                       | Top           |
| Surface String                     | 16"           | 0.375" WT                                    | SURFACE       |
| Prot. String                       | 8" Cert PVC   | 7.625" ID                                    | SURFACE       |
| Production String                  |               |  |               |
| Liner                              |               |  | Bottom        |
| Invoice No.                        | 2002056       | P.O. #. 14531                                | Job No.: 6022 |
| * FINAL PRINT *                    |               |  |               |

<<< Fold Here >>>

All interpretations are opinions based on inferences from electrical or other measurements and we cannot and do not guarantee the accuracy or correctness of any interpretation, and we shall not, except in the case of gross or willful negligence on our part, be liable or responsible for any loss, costs, damages, or expenses incurred or sustained by anyone resulting from any interpretation made by any of our officers, agents or employees. These interpretations are also subject to our general terms and conditions set out in our current Price Schedule.

**Comments**

A DYNAMIC DOWN and UP pass were performed.  
 Rw=3.846 ohm-m @ 80.6 degF (DYNAMIC). Q=10 gpm.  
**FLUID RESISTIVITY CALIBRATION REPORT**  
 (Performed: 12-JAN-01 17:30)

|       |         |
|-------|---------|
| OHM-M | CPS     |
| 2.575 | 2950.14 |
| 3.404 | 3185.45 |
| 4.829 | 2565.98 |

**TEMPERATURE CALIBRATION REPORT**  
 (Performed: 12-JAN-01 17:45)

|       |         |
|-------|---------|
| DEG-F | CPS     |
| 39.0  | 2515.12 |
| 105.6 | 5795.18 |

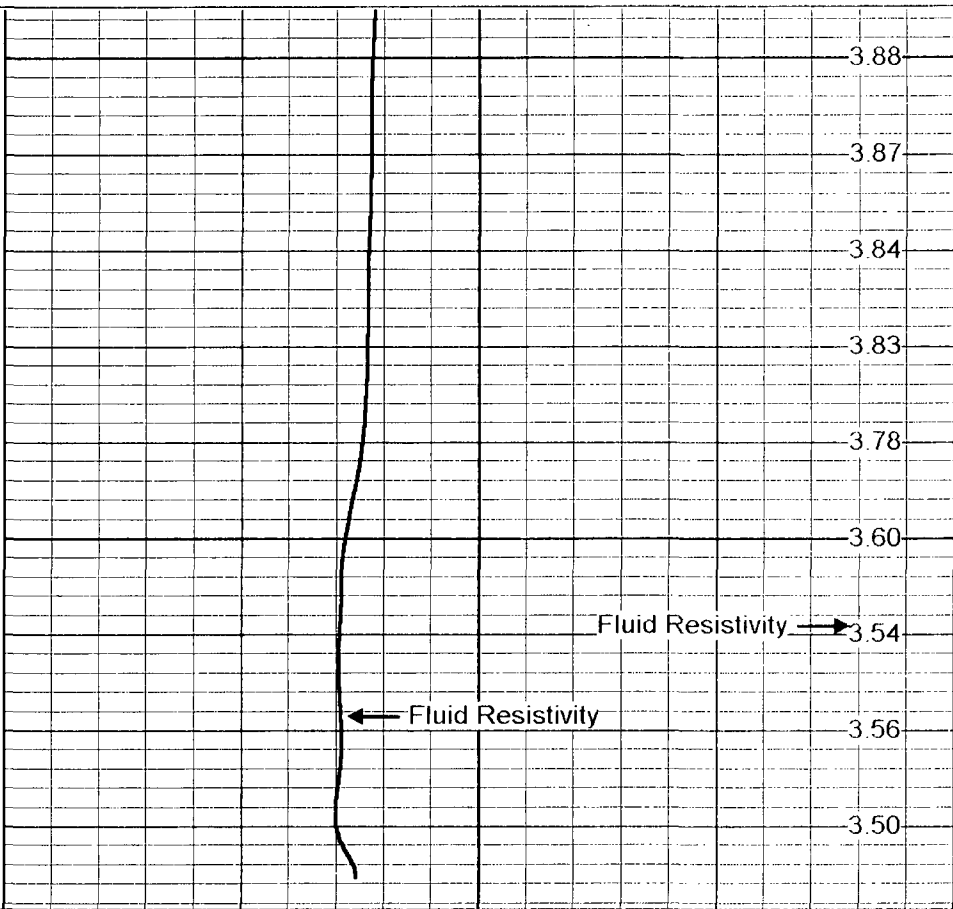
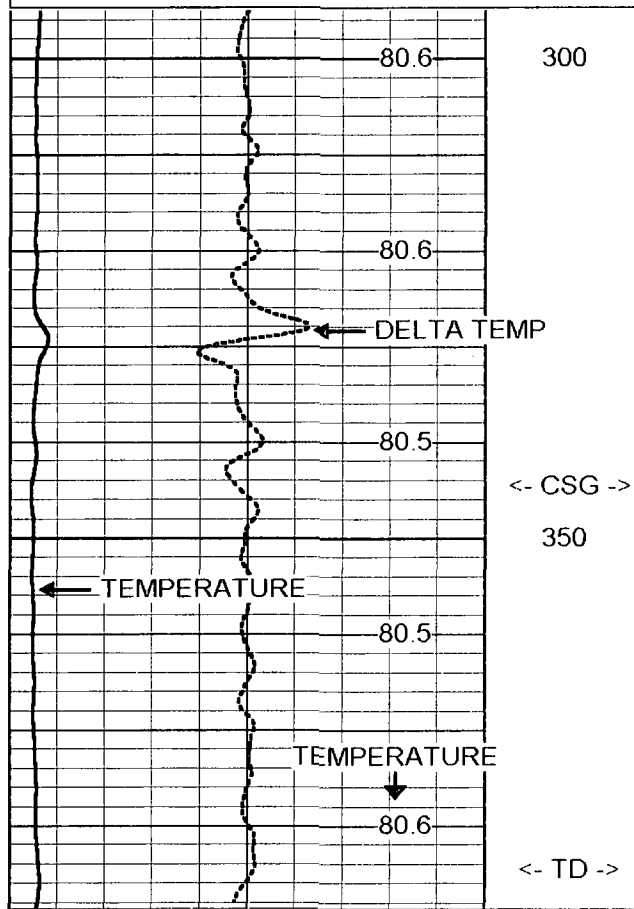


# FRT DOWN

Database File: pgiamw.db  
 Dataset Pathname: run3/FRTD  
 Presentation Format: frttemp.prs  
 Dataset Creation: Fri Mar 22 14:12:19 2002  
 Charted by: Depth in Feet scaled 1:240

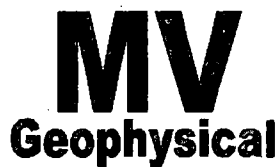
80 TEMPERATURE (degF) 90  
-0.5 DELTA TEMP (degF) 0.5

0 Fluid Resistivity 10



80 TEMPERATURE (degF) 90  
-0.5 DELTA TEMP (degF) 0.5

0 Fluid Resistivity 10

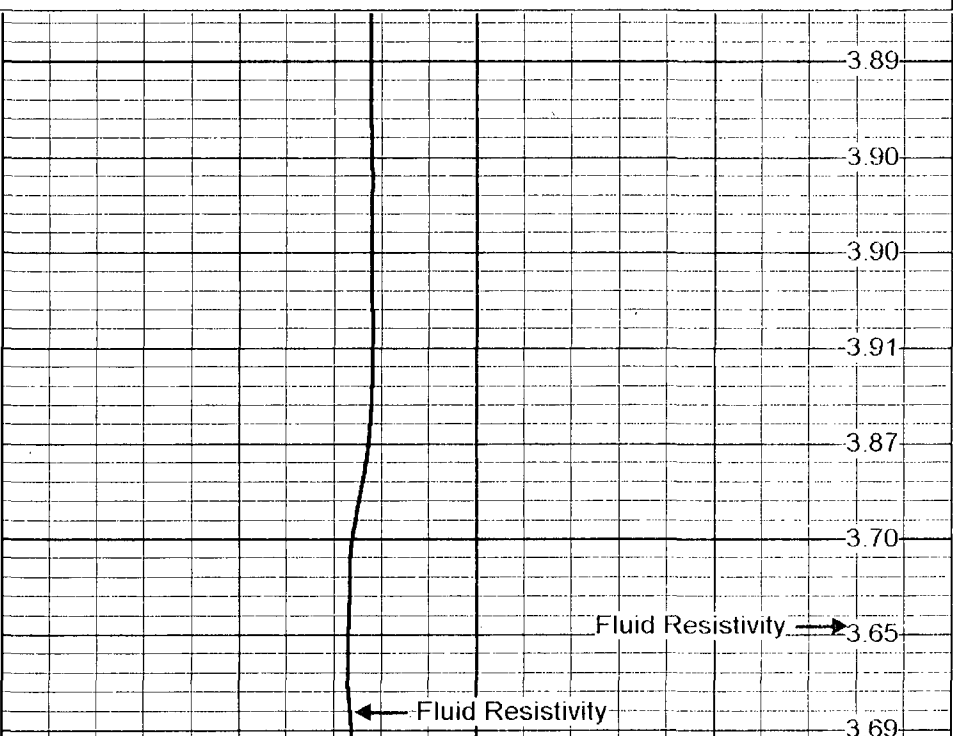
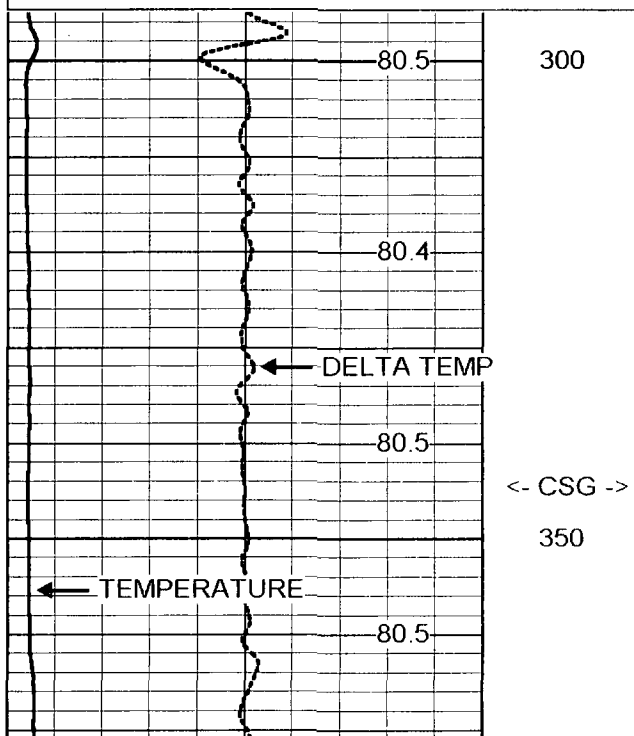


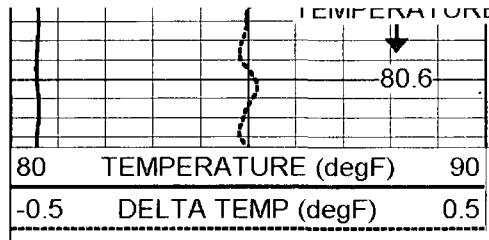
# FRT UP

Database File: pgiamw.db  
Dataset Pathname: run3/FRTU  
Presentation Format: frttemp.prs  
Dataset Creation: Fri Mar 22 17:48:11 2002  
Charted by: Depth in Feet scaled 1:240

80 TEMPERATURE (degF) 90  
-0.5 DELTA TEMP (degF) 0.5

0 Fluid Resistivity 10





<- TD ->

