



YOUNGQUIST BROTHERS, Inc
GEOPHYSICAL LOGGING DIVISION

TEMPERATURE LOG
MAR 9 0 2005

Company **WATER RESOURCES**
Well **DZMW (LM-7974)**
Field **GPIWA**
County **LEE**
State **FLORIDA**

Company **WATER RESOURCE SOLUTIONS**
Well **DZMW (LM-7974)**
Field **GPIWA**
County **LEE** State **FLORIDA**

Location **SE NE S33 T44S R22E**
Permanent Datum **PAD** Elevation
Log Measured From **PAD**
Drifting Measured From **PAD**
Date **JULY 17, 2004**
Other Services **SEE COMMENTS**
Elevation **K.B. 10.75' est G.L. 7' est**

Date	JULY 17, 2004
Run Number	FIVE
Depth Driller	1470'
Depth Logger	1470'
Bottom Logged Interval	1470'
Top Log Interval	CASING
Open Hole Size	5 1/2"
Type Fluid	WATER
Density / Viscosity	NA
Max. Recorded Temp.	93.4 F
Estimated Cement Top	NA
Time Well Ready	ON ARRIVAL
Time Logger on Bottom	0000
Equipment Number	101
Location	FT. MYERS
Recorded By	CATHEY
Witnessed By	D. ACQUAVIVA

Borehole Record		Tubing Record	
Run Number	Bit From To	Size	Weight From To
ONE	26.5" CASING	FIVE	5.5" 1395'
TWO	12.25" CASING		
THREE	17" CASING		
FOUR	9 7/8" CASING		

Casing Record		Wgt/Ft	
Surface String	Size	Top	Bottom
Surface String	30"	SURFACE	50'
Prot. String	18"	SURFACE	600'
Production String	10.75"	SURFACE	985'
Liner			

<< Fold Here >>

All interpretations are opinions based on inferences from electrical or other measurements and we cannot and do not guarantee the accuracy or correctness of any interpretation, and we shall not, except in the case of gross or willful negligence on our part, be liable or responsible for any loss, costs, damages, or expenses incurred or sustained by anyone resulting from any interpretation made by any of our officers, agents or employees. These interpretations are also subject to our general terms and conditions set out in our current Price Schedule.

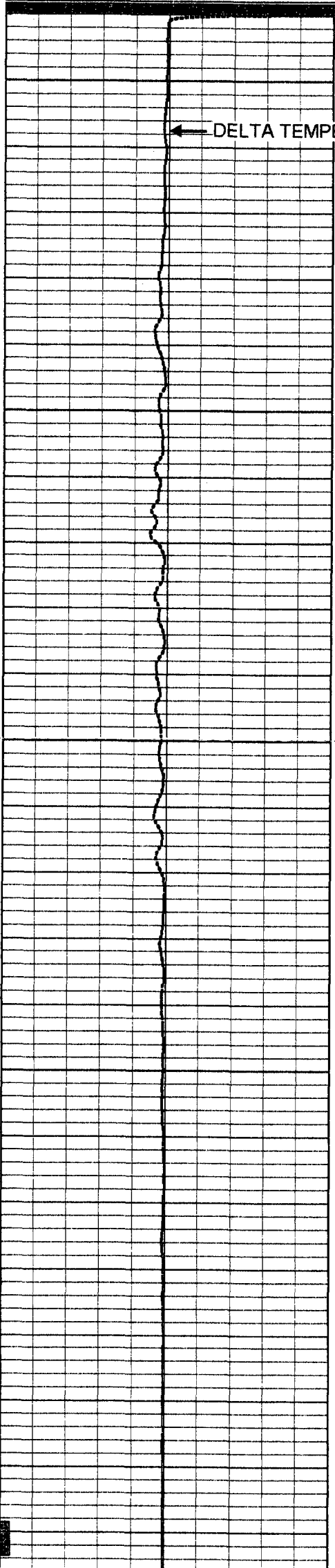
Comments

OTHER SERVICES:
X-Y CALIPER / GAMMA RAY
DUAL INDUCTION
BOREHOLE COMPENSATED SONIC FLOWMETER
Entered into **OCULUS** South District

YOUNGQUIST BROTHERS, Inc
GEOPHYSICAL LOGGING DIVISION

TEMPERATURE

Database File: pidzmw.db
Dataset Pathname: run5/pass1
Presentation Format: temp
Dataset Creation: Wed Jul 21 09:29:03 2004



950

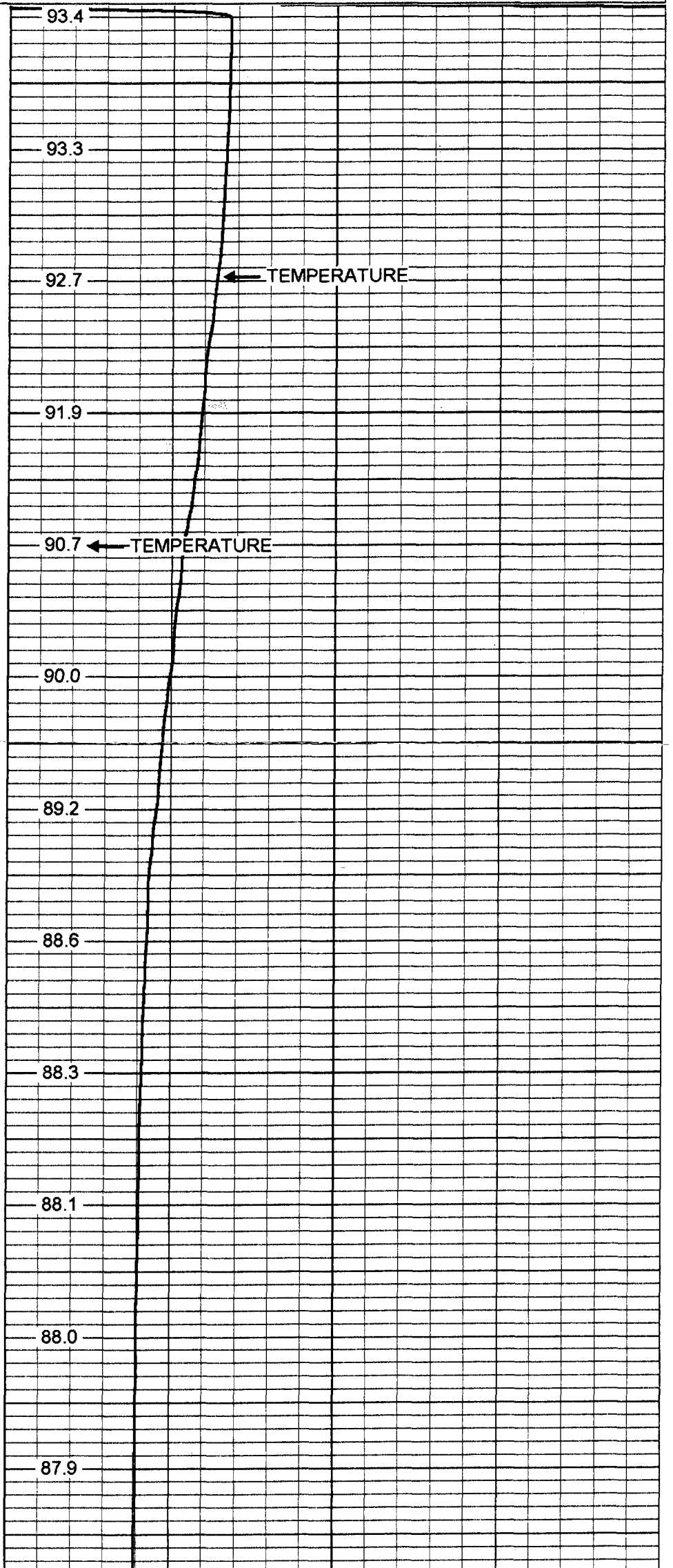
← DELTA TEMPERATURE

1000

1050

1100

1150



93.4

93.3

92.7

91.9

90.7

90.0

89.2

88.6

88.3

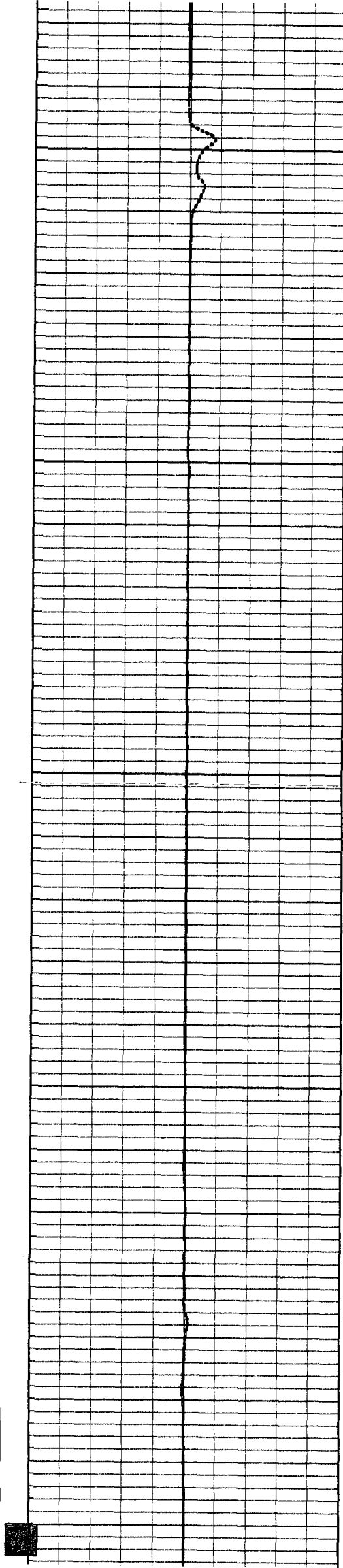
88.1

88.0

87.9

← TEMPERATURE

← TEMPERATURE



1200

1250

1300

1350

1400

87.9

88.2

88.9

88.9

89.0

89.0

89.1

89.1

89.1

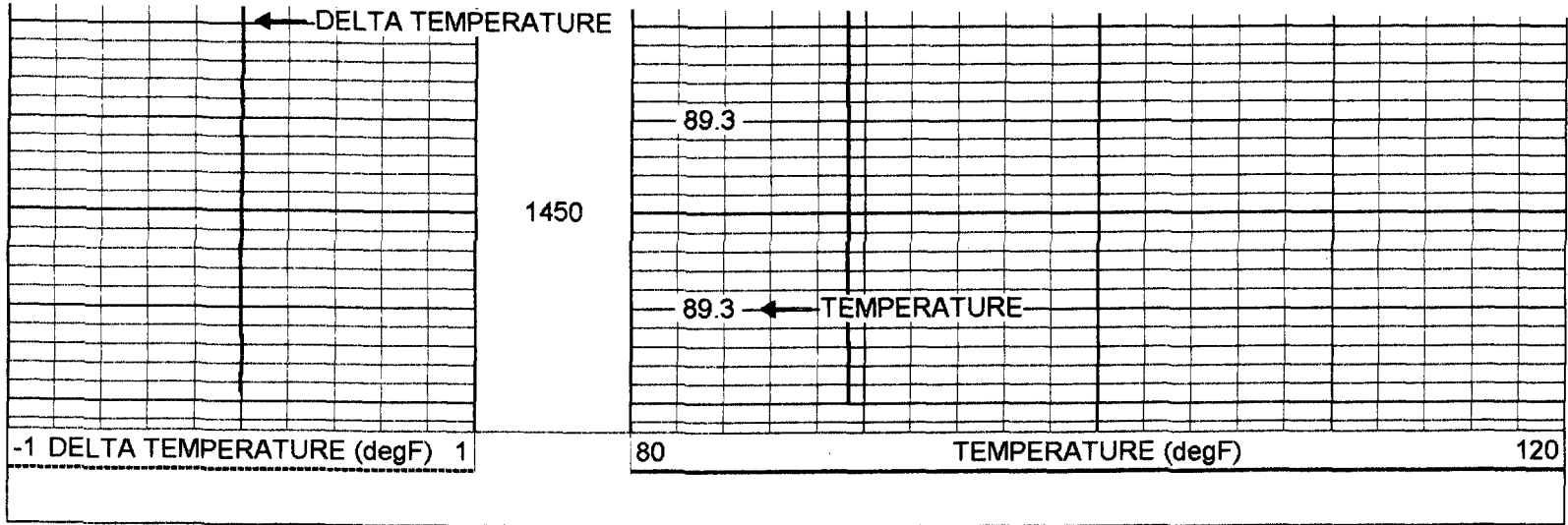
89.1

89.1

89.2

89.2

← TEMPERATURE



Temperature Calibration Report					
		Serial Number:		17	
		Tool Model:		MLS	
		Performed:		Fri Apr 04 14:49:15 2003	
Point #	Reading		Reference		
1	320	cps	32		degF
2	700	cps	70		degF
3	2000	cps	200		degF

