



**YOUNGQUIST  
BROTHERS, Inc**

GEOPHYSICAL LOGGING DIVISION

**FLUID CONDUCTIVITY  
TEMPERATURE  
LOG  
RECEIVED**

Company **MVWH** AUG 06 2003

Well **IW #1**

Field **NORTH LEE COUNTY** DEP - South District

County **LEE** State **FLORIDA**

Location

Other Services  
SEE  
COMMENTS

Company **MWH**  
Well **IW #1**  
Field **NORTH LEE COUNTY**  
County **LEE**  
State **FLORIDA**

Permanent Datum **PAD**  
Log Measured From **PAD**  
Drilling Measured From **PAD**

Elevation **3.75'**

Elevation  
K.B.  
D.F.  
G.L.

Date **JULY 16, 2003**

Run Number **SIX**

Depth Driller **3010'**

Bottom Logged Interval **3008'**

Top Log Interval **CASING**

Open Hole Size **12.25"**

Type Fluid **WATER**

Density / Viscosity **NA**

Max. Recorded Temp. **NA**

Estimated Cement Top **NA**

Time Well Ready **1400**

Time Logger on Bottom **1430**

Equipment Number **103**

Location **FT. MYERS**

Recorded By **FERGUSON**

Witnessed By **R. SKINNER**

**N. JOHNSON**

Run Number

Bit

From

To

Size

Weight

From

To

Weight

From

To

Weight

Borehole Record				Tubing Record			
Run Number	Bit	From	To	Size	Weight	From	To
ONE	12.25"	SURFACE	501'	12.25"			3010'
TWO	48.50"	SURFACE	505'			CASG	
THREE	12.25"	CASING	1830'				
FOUR	40.50"	CASING	1782'				
Casing Record	Size	Wgt/Ft	Top	Bottom			
Surface String	47"	.375 W.T.	SURFACE	500'			
Prod. String	30"	.375 W.T.	SURFACE	1775'			
Production String							
Liner							

<<< Fold Here >>>

All interpretations are opinions based on inferences from electrical or other measurements and we cannot and do not guarantee the accuracy or correctness of any interpretation, and we shall not, except in the case of gross or willful negligence on our part, be liable or responsible for any loss, costs, damages, or expenses incurred or sustained by anyone resulting from any interpretation made by any of our officers, agents or employees. These interpretations are also subject to our general terms and conditions set out in our current Price Schedule.

**Comments**

**X-Y CALIPER  
DUAL INDUCTION LL3/SP  
BOREHOLE COMPENSATED SONIC  
FLOWMETER**



**MERGED FCT**

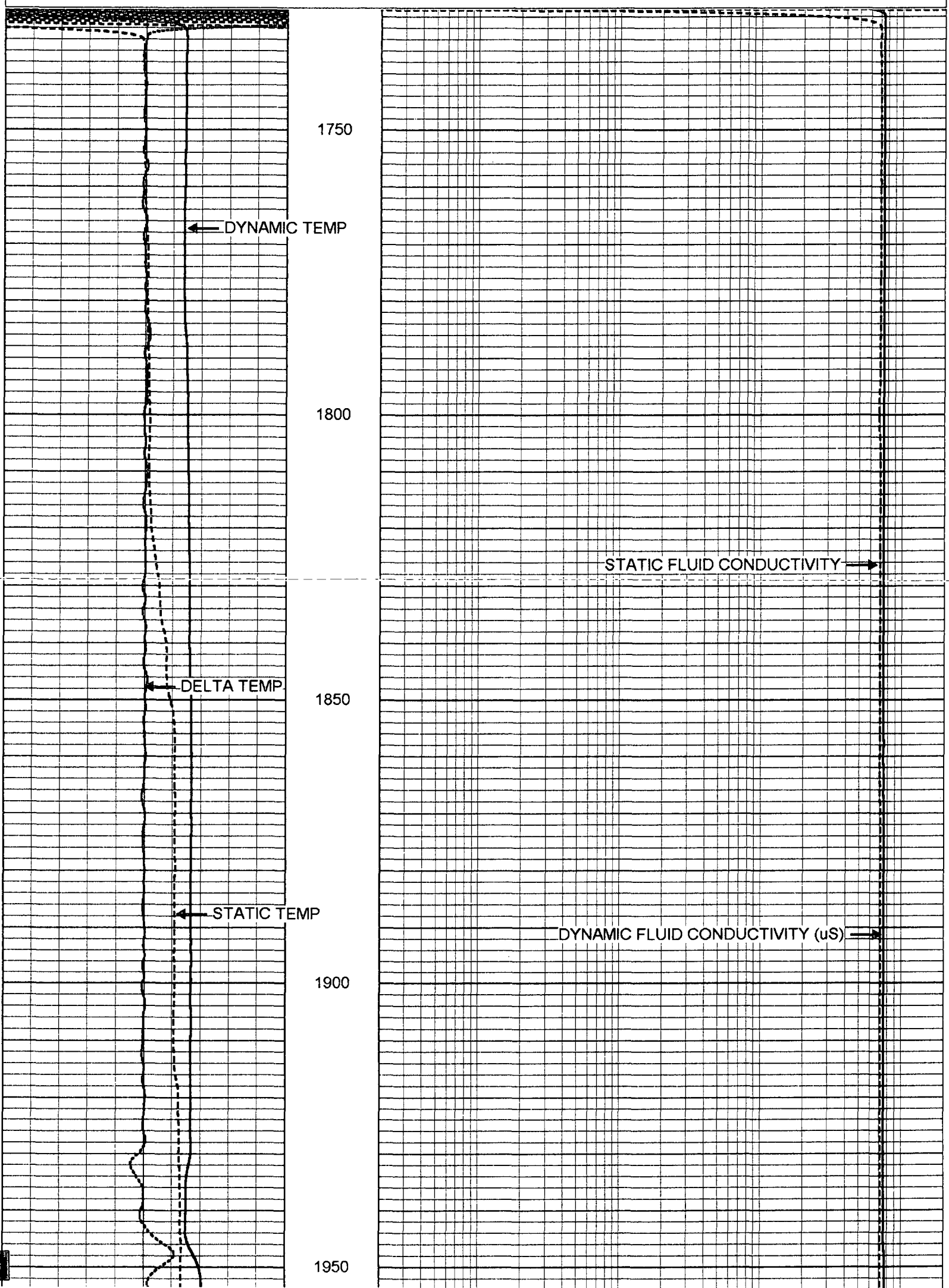
Database File: nlee.db  
Dataset Pathname: run6/pass15  
Presentation Format: frt\_mg

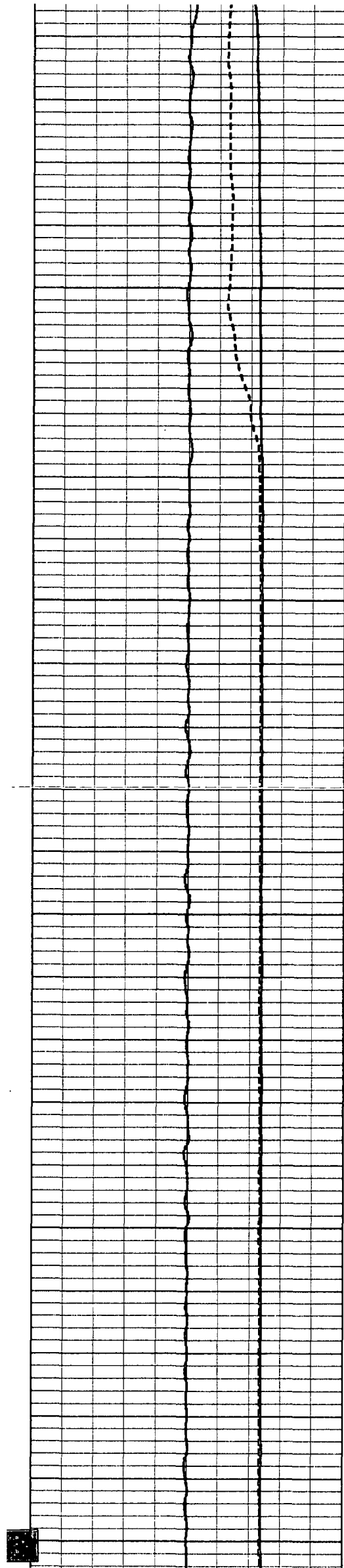
Charted by:

Depth in Feet scaled 1:240

95	DYNAMIC TEMP (degF)	105
95	STATIC TEMP (degF)	105
-0.5	DELTA TEMP (degF)	0.5

20	DYNAMIC FLUID CONDUCTIVITY (uS)	200000
20	STATIC FLUID CONDUCTIVITY (uS)	200000





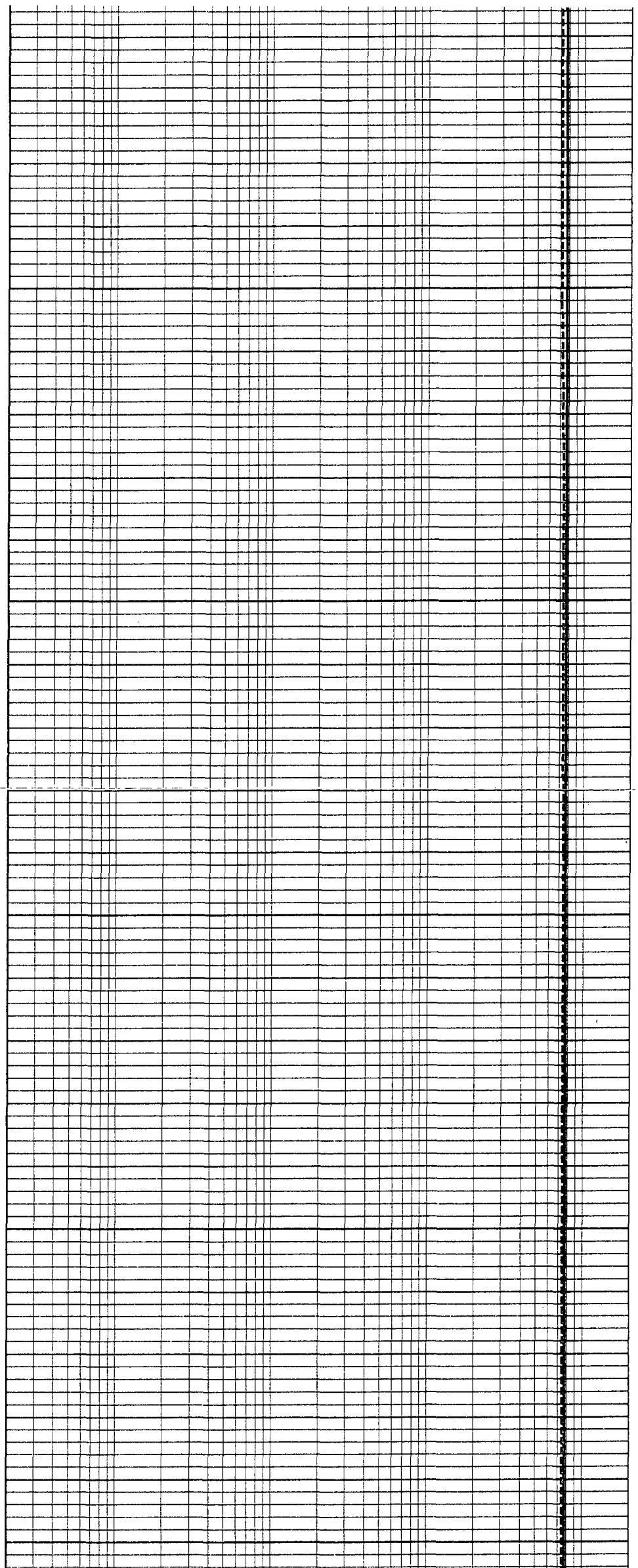
2000

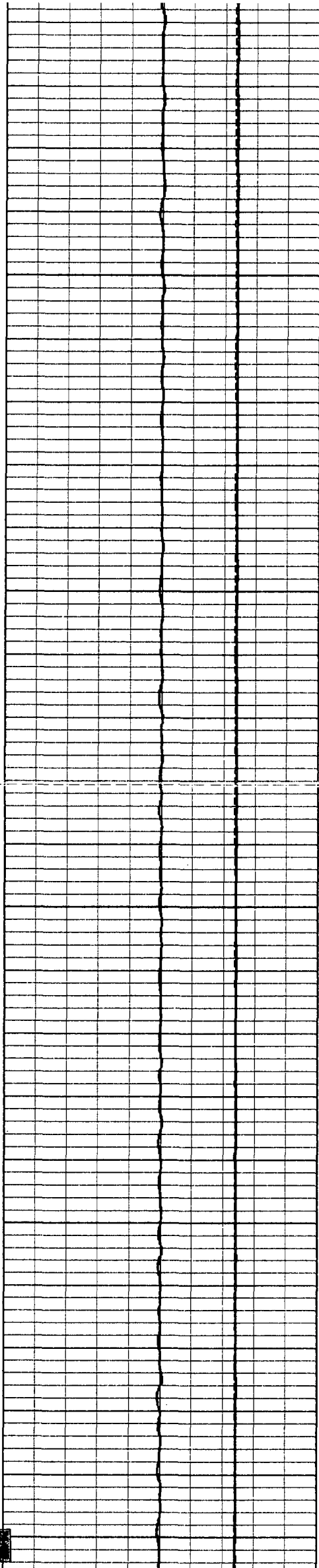
2050

2100

2150

2200





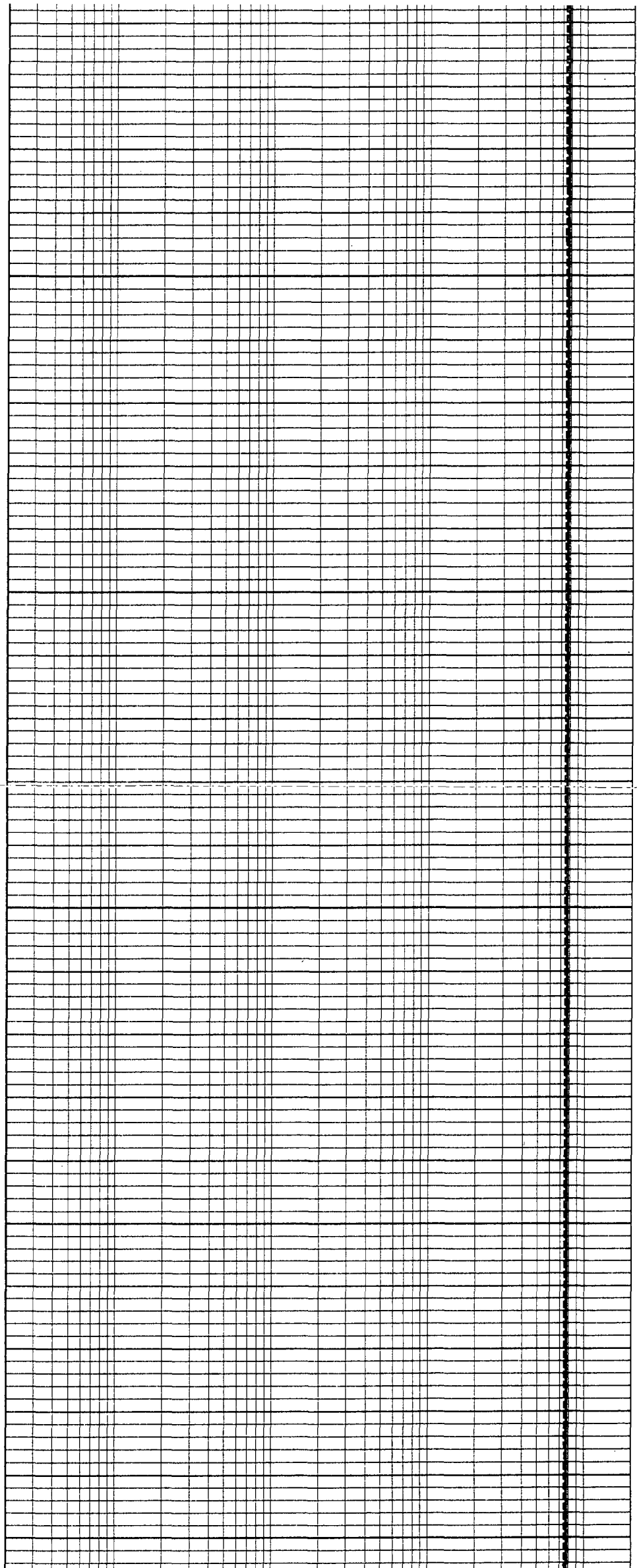
2250

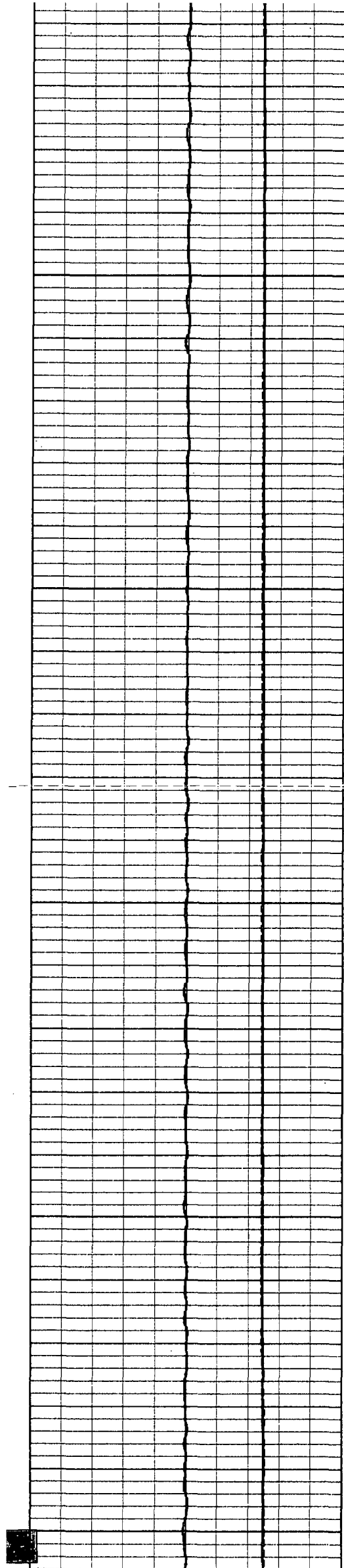
2300

2350

2400

2450





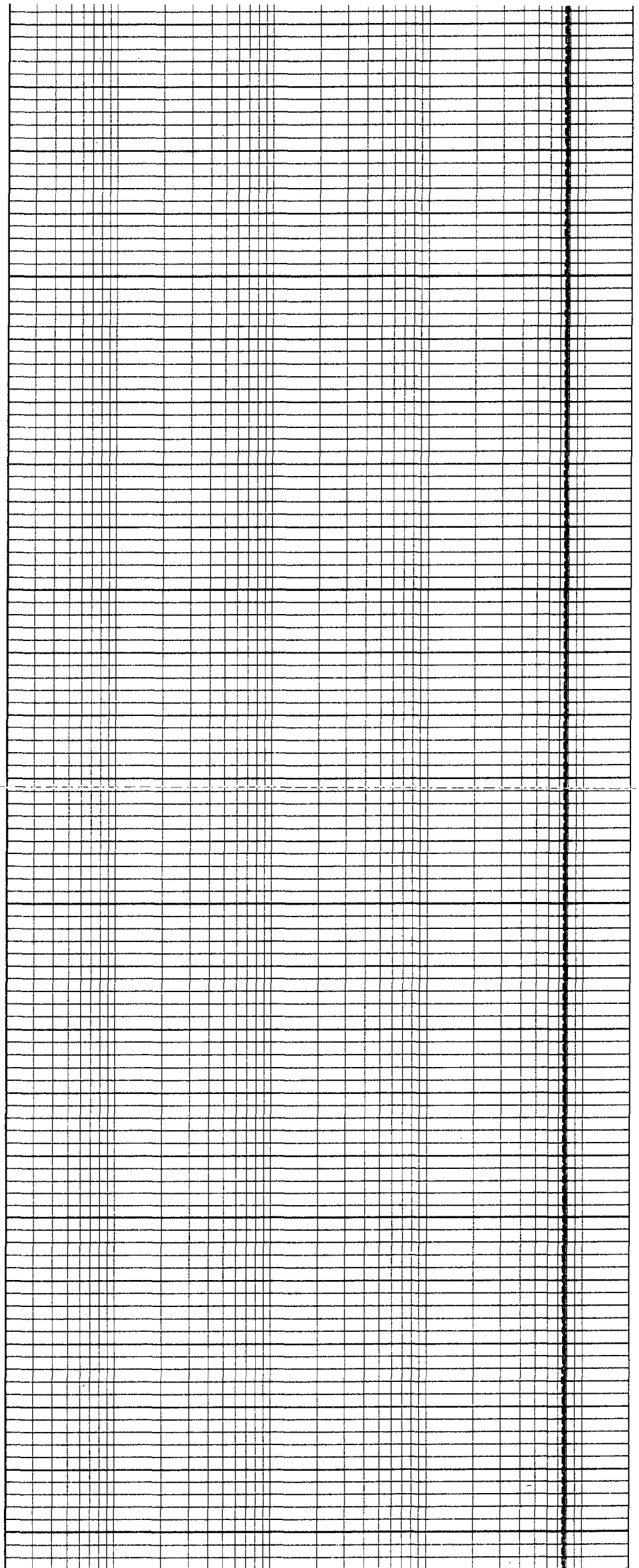
2500

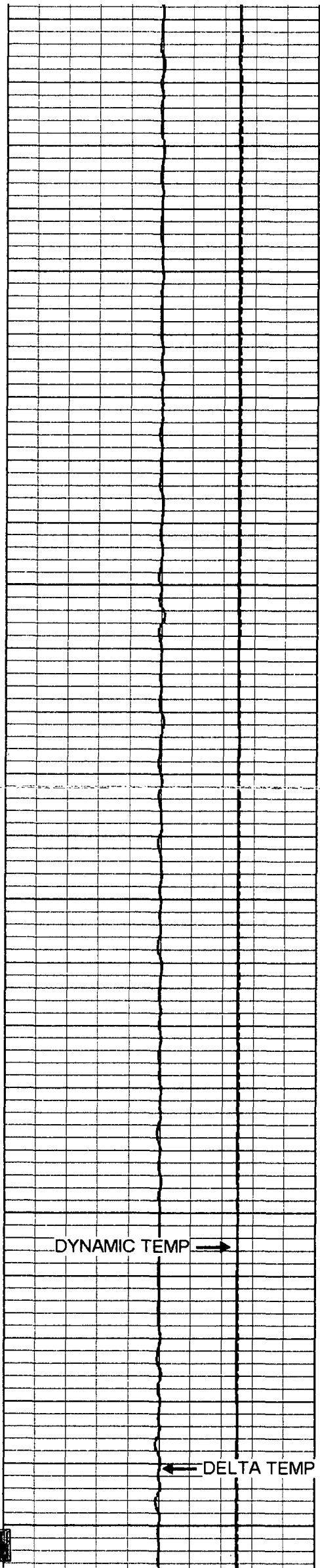
2550

2600

2650

2700





2750

2800

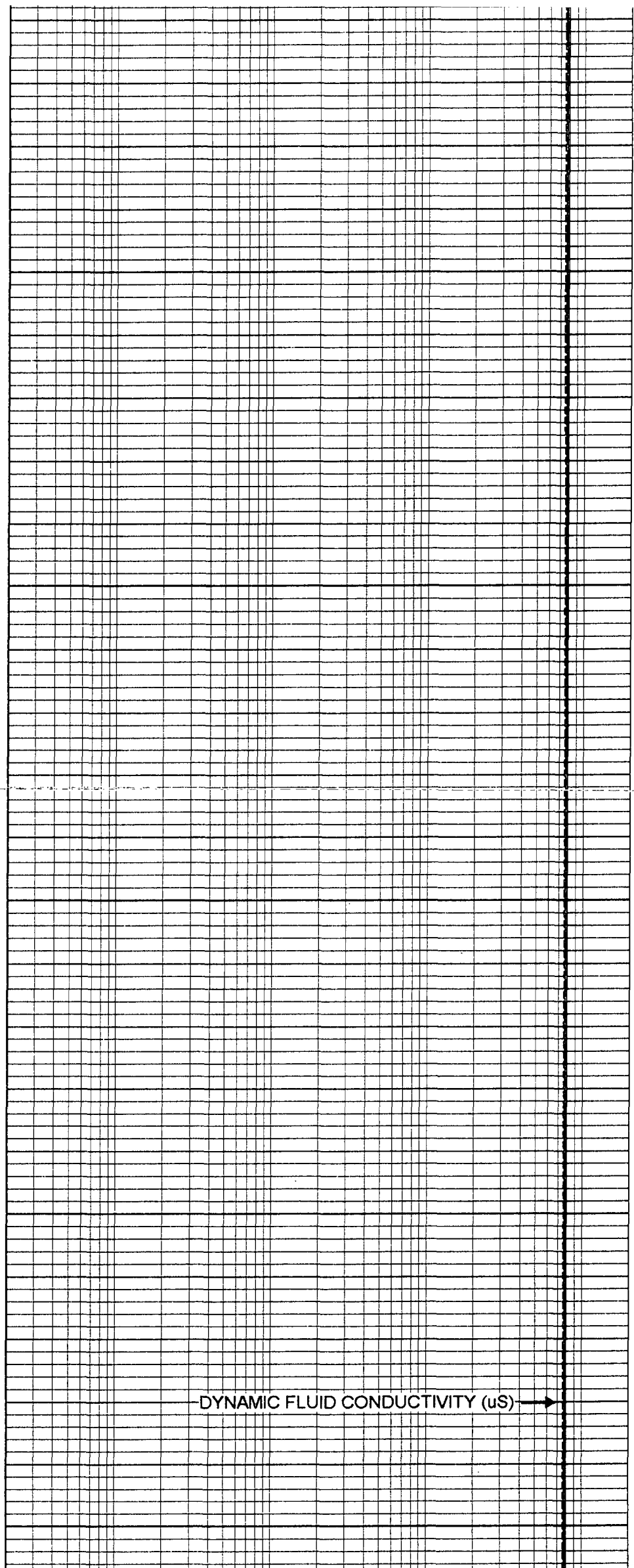
2850

2900

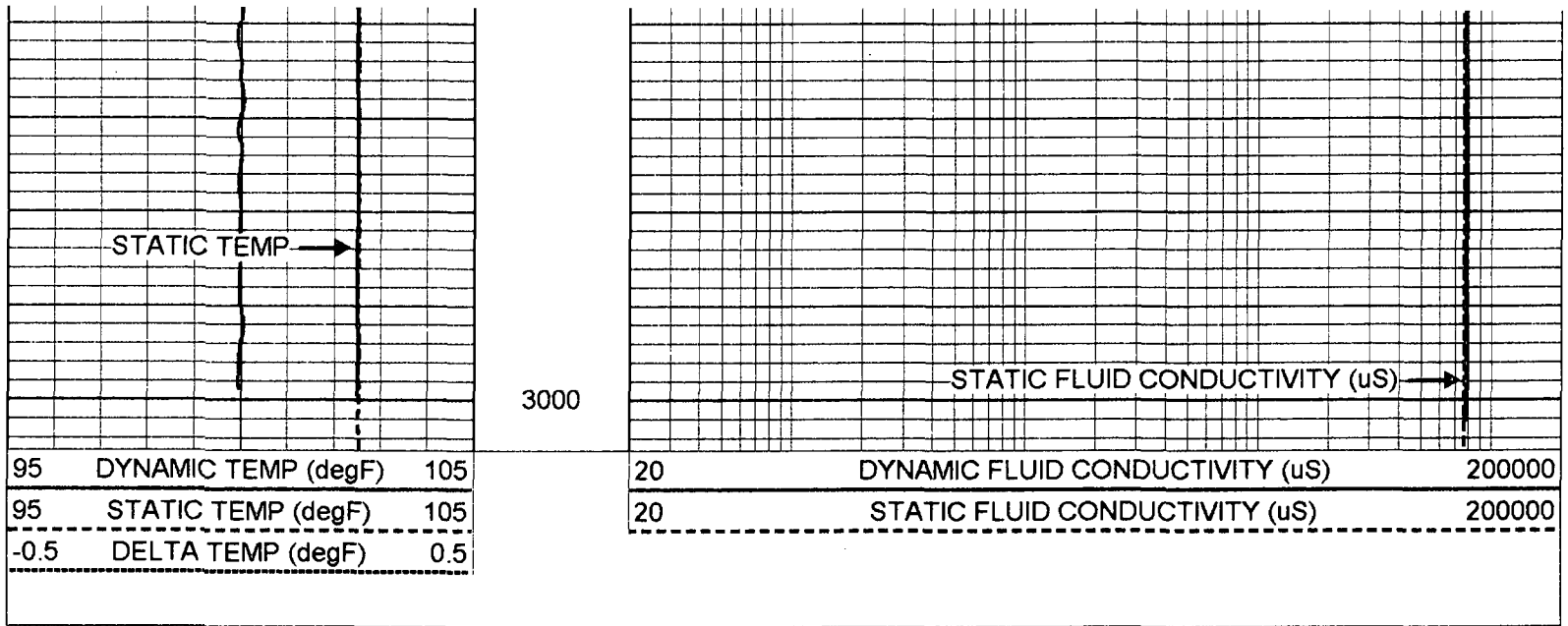
2950

DYNAMIC TEMP →

← DELTA TEMP



DYNAMIC FLUID CONDUCTIVITY (uS) →



### FRT Calibration Report

Serial Number: 30  
 Tool Model: SONDEX  
 Performed: Tue Apr 15 10:25:31 2003

Point #	Reading		Reference
1	32.596	cps	1000.000
2	175.215	cps	10000.000
3	425.338	cps	25000.000
4	967.399	cps	50000.000
5		cps	
6		cps	

### Temperature Calibration Report

Serial Number: 30  
 Tool Model: SONDEX  
 Performed: Fri Apr 04 09:46:01 2003

Point #	Reading		Reference
1	121.963	cps	36 degF
2	312.065	cps	79 degF
3	608.77	cps	136 degF

