



**YOUNGQUIST  
BROTHERS, Inc**

GEOPHYSICAL LOGGING DIVISION

**FLUID CONDUCTIVITY  
TEMPERATURE  
LOG**

**RECEIVED**

APR 30 2004

Company **MWH**  
Well **IW #1**  
Field **NORTH LEE COUNTY SOUTH DISTRICT**  
County **LEE** State **FLORIDA**

Company **MWH**  
Well **IW #1**  
Field **NORTH LEE COUNTY**  
County **LEE**  
State **FLORIDA**

Location  
Other Services  
SEE  
COMMENTS

Permanent Datum **PAD** Elevation **3.75'**  
Log Measured From **PAD**  
Drilling Measured From **PAD**  
Elevation **K.B. D.F. G.L.**

Date **JULY 16, 2003**

Run Number		SIX	
Depth Driller		3010'	
Bottom Logger		3008'	
Bottom Logged Interval		3008'	
Top Log Interval		CASING	
Open Hole Size		12.25"	
Type Fluid		WATER	
Density / Viscosity		NA	
Max. Recorded Temp.		NA	
Estimated Cement Top		NA	
Time Well Ready		1400	
Time Logger on Bottom		1430	
Equipment Number		103	
Location		FT. MYERS	
Recorded By		FERGUSON	
Witnessed By		R. SKINNER	

Run Number	Borehole Record		Tiding Record	
	Bit	From	To	To
ONE	12.25"	SURFACE	501'	3010'
TWO	48.50"	SURFACE	505'	
THREE	12.25"	CASING	1830'	
FOUR	40.50"	CASING	1782'	

Casing Record		42"	Wgt/ft	
Surface String		30"	375 W.T.	
Prod. String			375 W.T.	
Production String				
Liner				

<<< Fold Here >>>

All interpretations are opinions based on inferences from electrical or other measurements and we cannot and do not guarantee the accuracy or correctness of any interpretation, and we shall not, except in the case of gross or willful negligence on our part, be liable or responsible for any loss, costs, damages, or expenses incurred or sustained by anyone resulting from any interpretation made by any of our officers, agents or employees. These interpretations are also subject to our general terms and conditions set out in our current Price Schedule.

**Comments**

X-Y CALIPER  
DUAL INDUCTION LL3/SP  
BOREHOLE COMPENSATED SONIC  
FLOWMETER



**YOUNGQUIST  
BROTHERS, Inc**

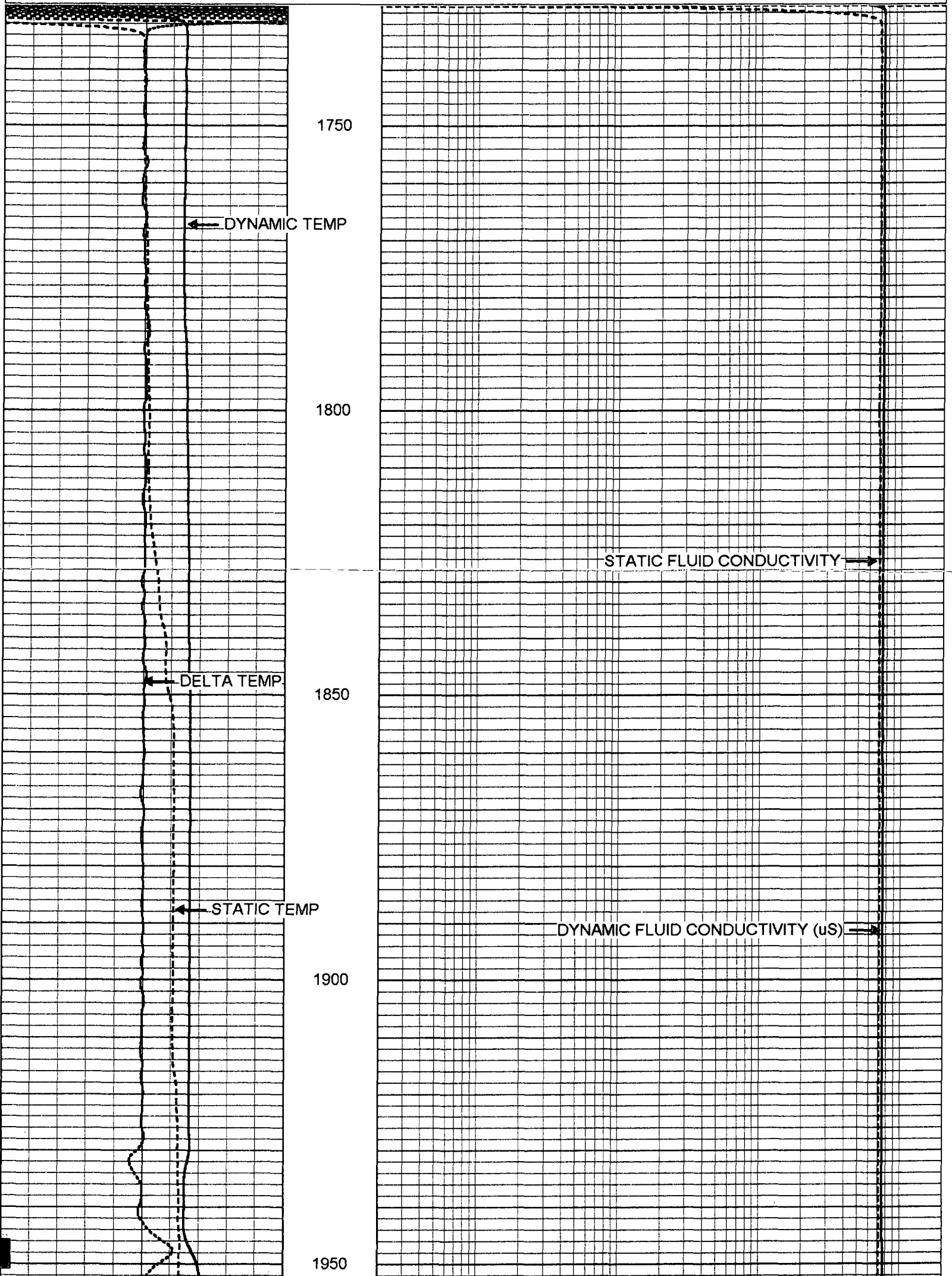
GEOPHYSICAL LOGGING DIVISION

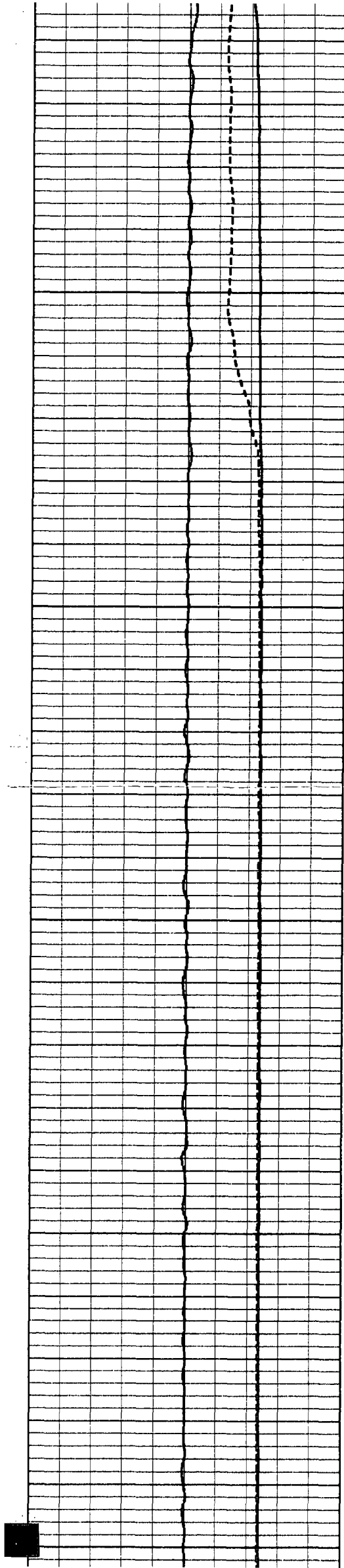
**MERGED FCT**

Database File: nlee.db  
Dataset Pathname: run6/pass15  
Presentation Format: frt\_mg

95	DYNAMIC TEMP (degF)	105
95	STATIC TEMP (degF)	105
-0.5	DELTA TEMP (degF)	0.5

20	DYNAMIC FLUID CONDUCTIVITY (uS)	200000
20	STATIC FLUID CONDUCTIVITY (uS)	200000





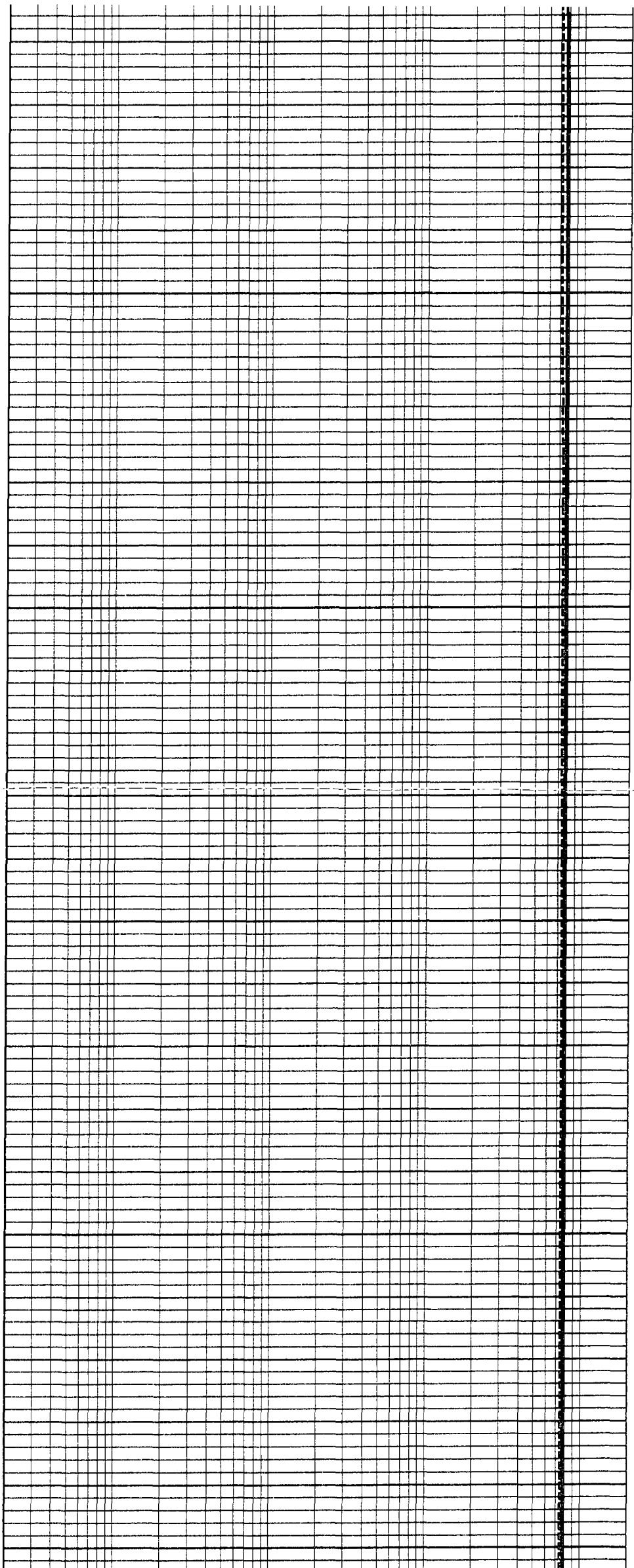
2000

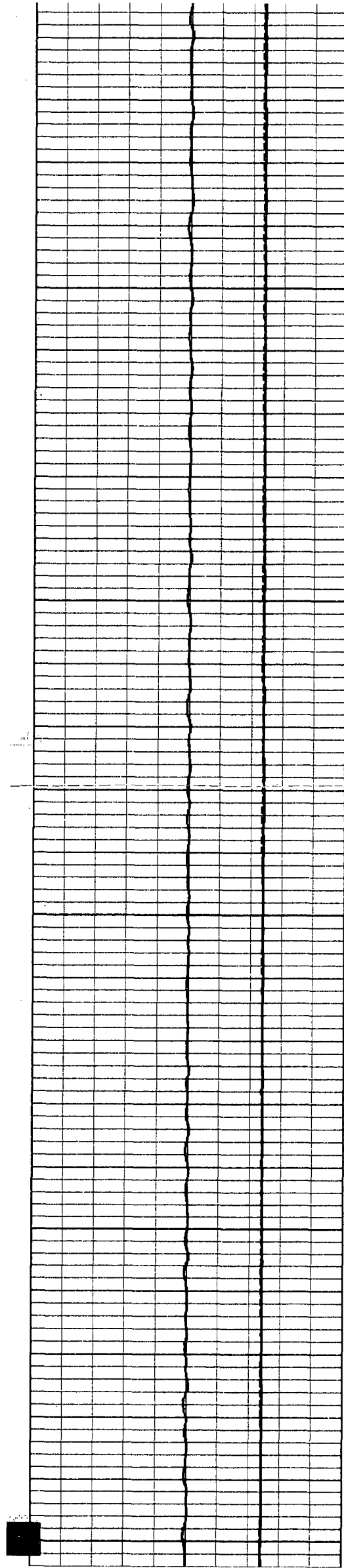
2050

2100

2150

2200





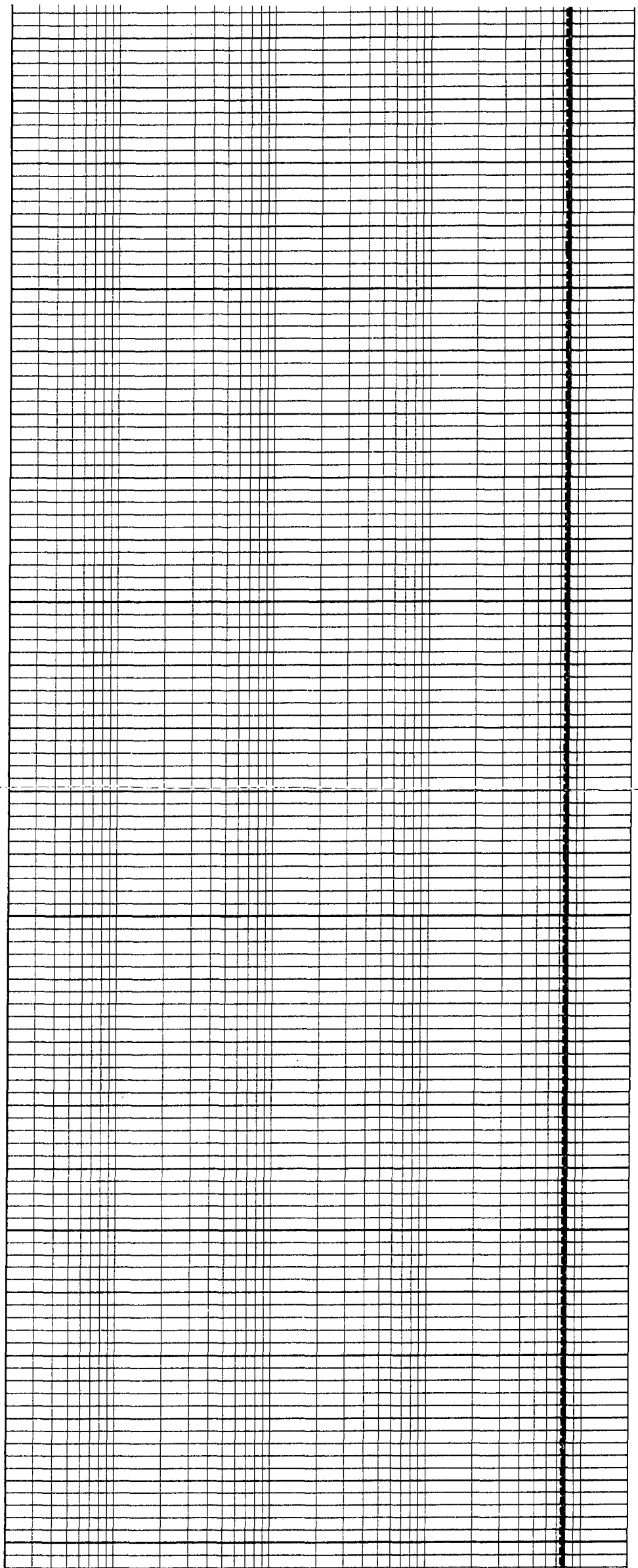
2250

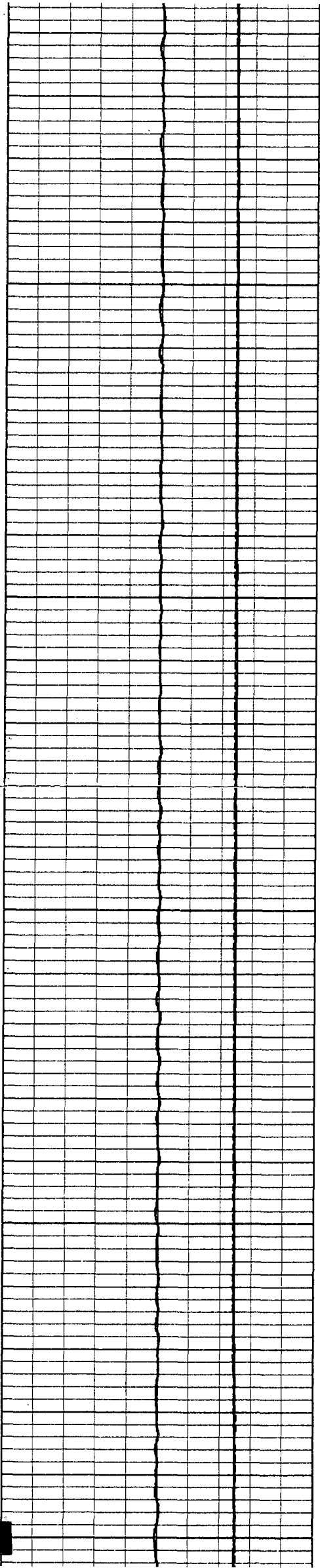
2300

2350

2400

2450





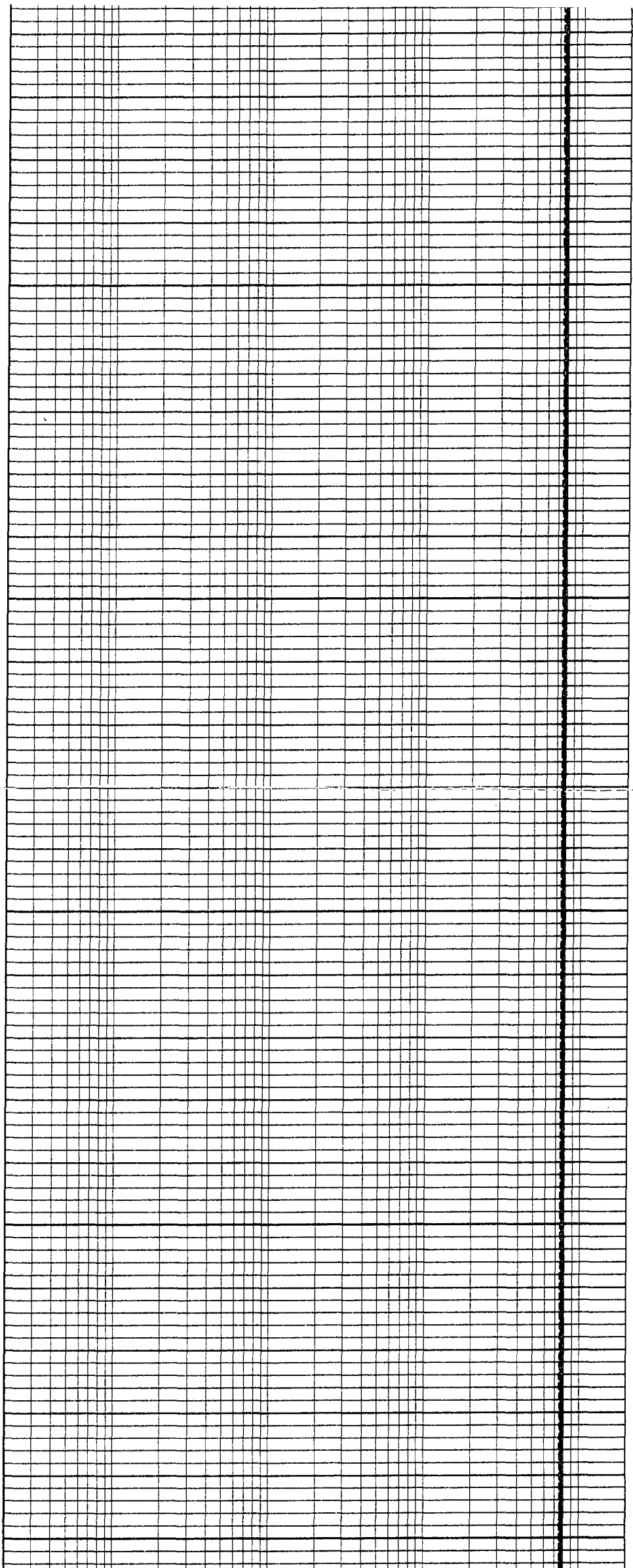
2500

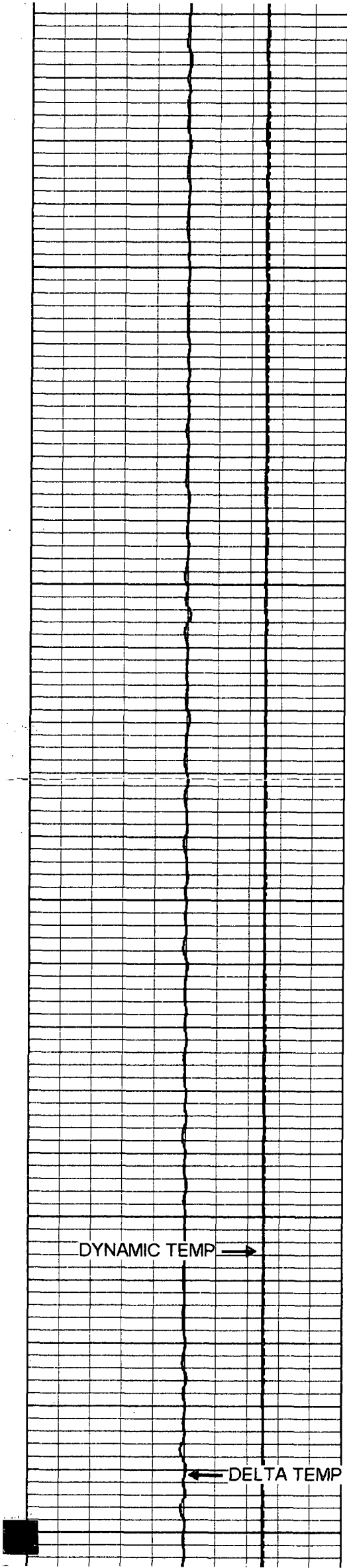
2550

2600

2650

2700





2750

2800

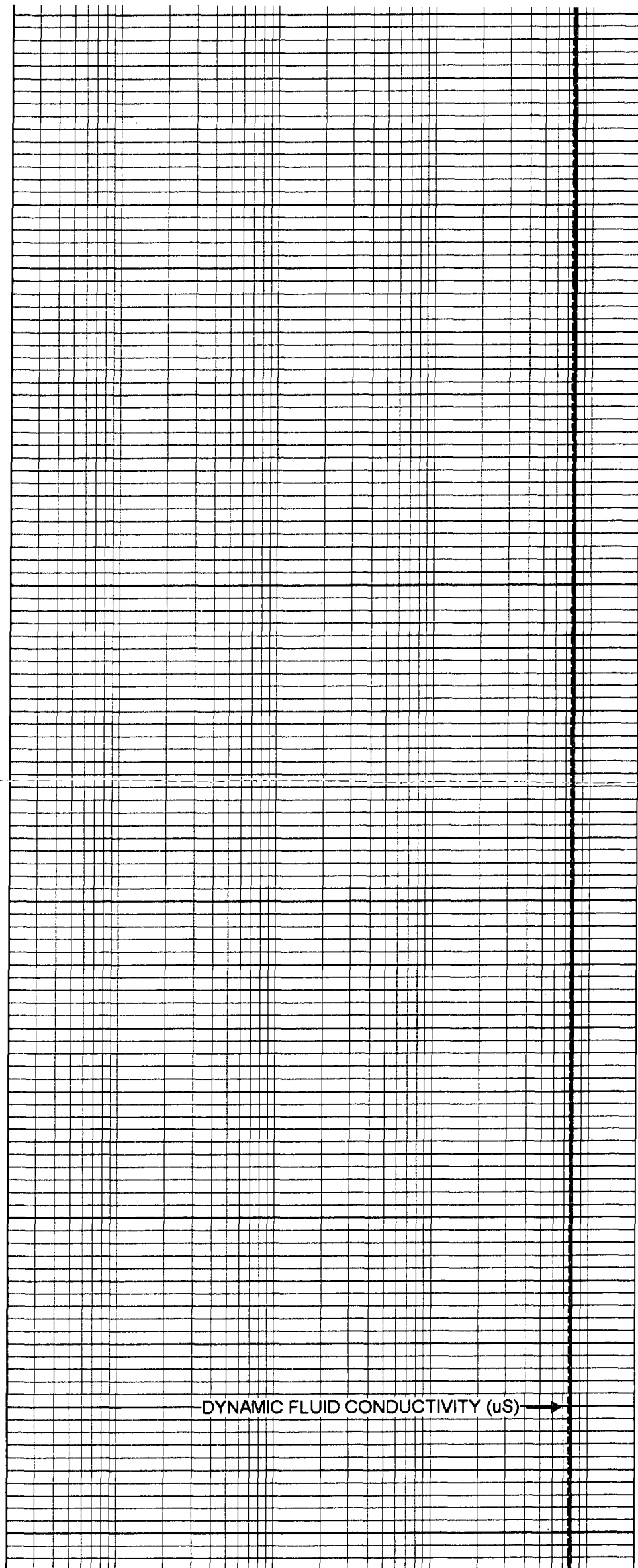
2850

2900

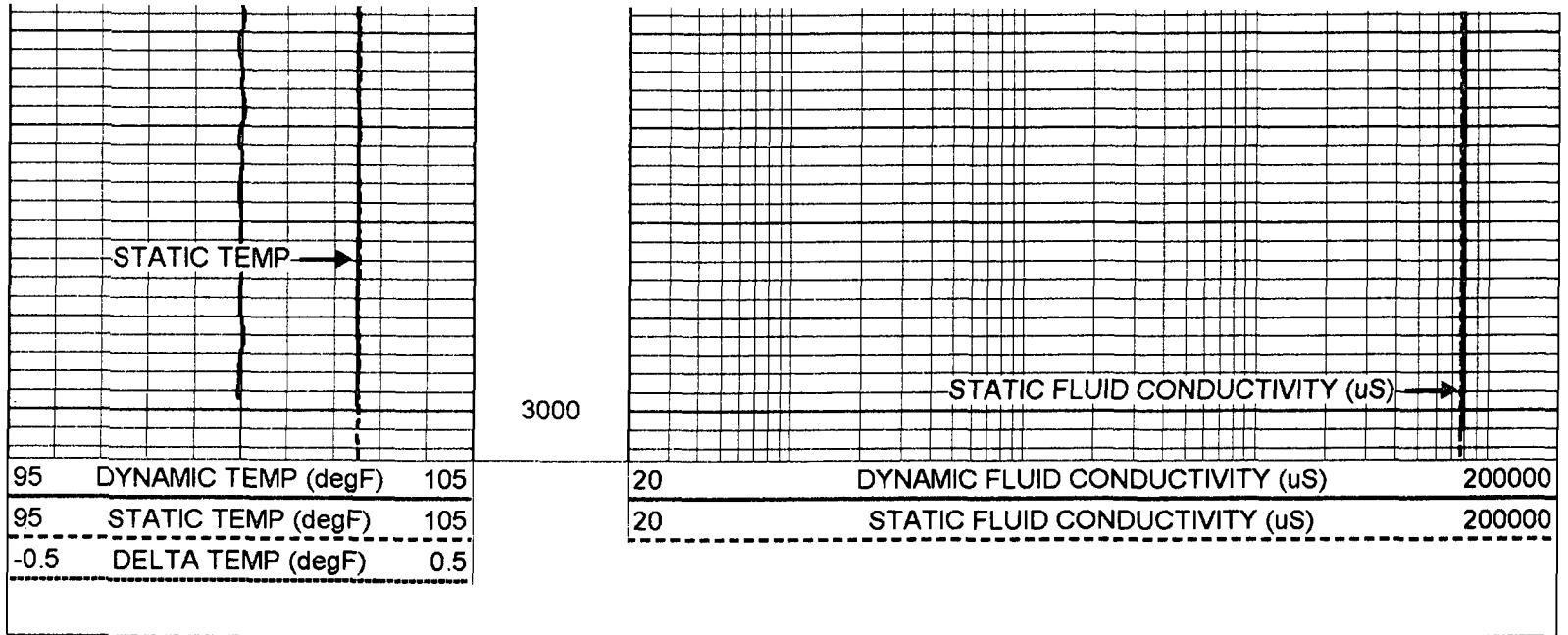
DYNAMIC TEMP →

← DELTA TEMP

2950



DYNAMIC FLUID CONDUCTIVITY (uS) →



### FRT Calibration Report

Serial Number: 30  
 Tool Model: SONDEX  
 Performed: Tue Apr 15 10:25:31 2003

Point #	Reading		Reference
1	32.596	cps	1000.000
2	175.215	cps	10000.000
3	425.338	cps	25000.000
4	967.399	cps	50000.000
5		cps	
6		cps	

### Temperature Calibration Report

Serial Number: 30  
 Tool Model: SONDEX  
 Performed: Fri Apr 04 09:46:01 2003

Point #	Reading		Reference	
1	121.963	cps	36	degF
2	312.065	cps	79	degF
3	608.77	cps	136	degF

