



GEOPHYSICAL LOGGING DIVISION

**YOUNGQUIST BROTHERS, Inc**

**FLUID CONDUCTIVITY TEMPERATURE**

**LOG RECEIVED**

APR 30 2003

Company **MWH**  
 Well **IW #1**  
 Field **NORTH LEE COUNTY SOUTH DISTRICT**  
 County **LEE** State **FLORIDA**

Location  
 Permanent Datum **PAD** Elevation **3.75'**  
 Log Measured From **PAD**  
 Drilling Measured From **PAD**  
 Other Services **SEE COMMENTS**  
 Elevation **K.B. D.F. G.L.**

Date	03-JUNE-2003
Run Number	THREE
Depth Driller	1830'
Depth Logger	1833'
Bottom Logged Interval	1833'
Top Log Interval	CASING
Open Hole Size	12.25"
Type Fluid	WATER
Density / Viscosity	NA
Max. Recorded Temp.	NA
Estimated Cement Top	NA
Time Well Ready	ON ARRIVAL
Time Logger on Bottom	2130
Equipment Number	103
Location	FT. MYERS DENISON
Recorded By	R. WALTHER
Witnessed By	

Borehole Record		Tubing Record					
Run Number	Bit	From	To	Size	Weight	From	To
ONE	12.25"	SURFACE	501'				
TWO	48.50"	SURFACE	505'				
THREE	12.25"	CASING	1830'				

Casing Record	Size	Wgt/Ft	Top	Bottom
Surface String	42"	375 W.T.	SURFACE	500'
Prod. String				
Production String				
Liner				


<<< Fold Here >>>

All interpretations are opinions based on inferences from electrical or other measurements and we cannot and do not guarantee the accuracy or correctness of any interpretation, and we shall not, except in the case of gross or willful negligence on our part, be liable or responsible for any loss, costs, damages, or expenses incurred or sustained by anyone resulting from any interpretation made by any of our officers, agents or employees. These interpretations are also subject to our general terms and conditions set out in our current Price Schedule.

**Comments**

**OTHER SERVICES:**

DUAL INDUCTION/LL3/SP  
 BOREHOLE COMPENSATED SONIC  
 X-Y CALIPER/GAMMA RAY  
 FLOWMETER  
 BOREHOLE TELEVIEWER



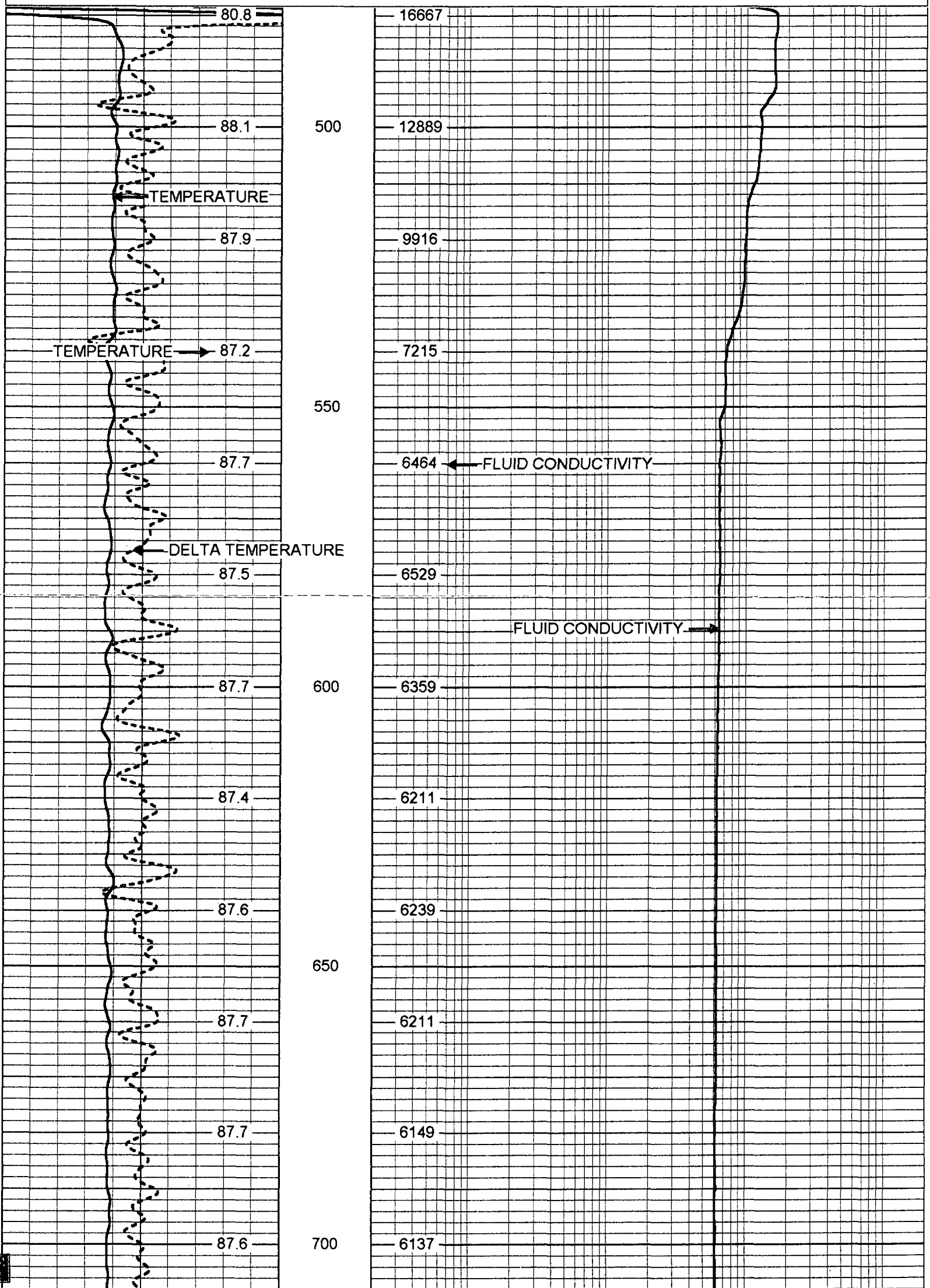
**YOUNGQUIST BROTHERS, Inc**  
 GEOPHYSICAL LOGGING DIVISION

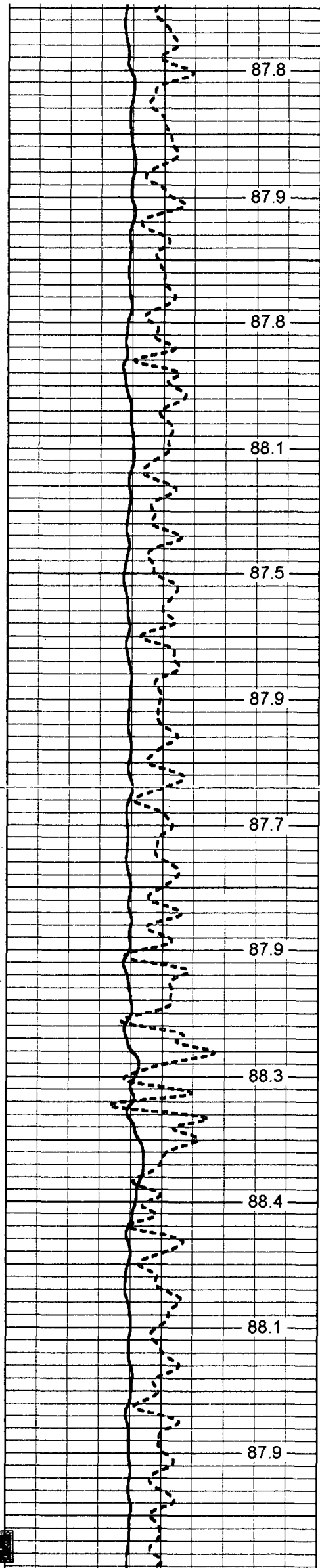
**FCT/TEMP**

Database File: nlee.db  
 Dataset Pathname: run3/pass1  
 Presentation Format: frttemp  
 Dataset Creation: Tue Jun 03 21:22:15 2003 by Log 6 2 R4

80 TEMPERATURE (degF) 100  
-1 DELTA TEMP (degF) 1

20 FLUID CONDUCTIVITY (uS) 200000





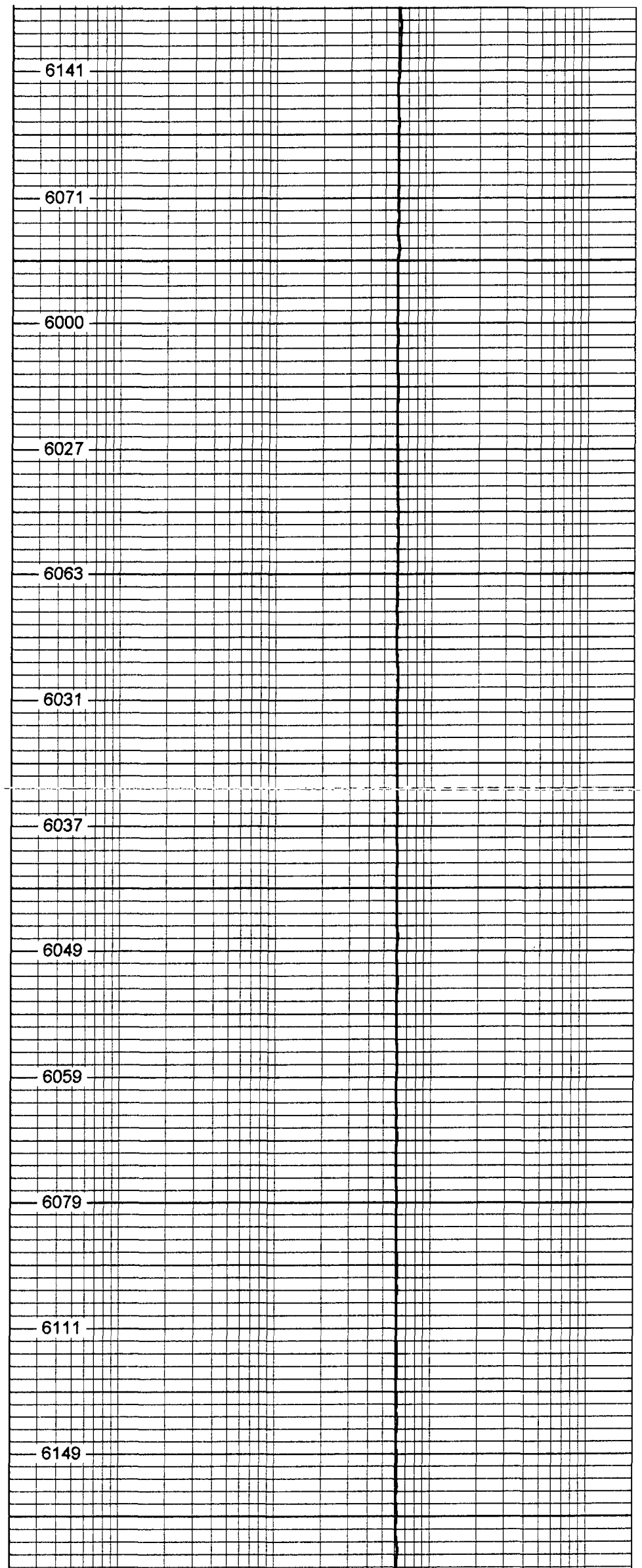
750

800

850

900

950



88.0

6190

88.1

1000

6158

88.0

6198

88.1

6189

1050

88.0

6209

88.0

6250

88.2

1100

6303

88.1

6424

88.3

6529

1150

88.3

6651

88.3

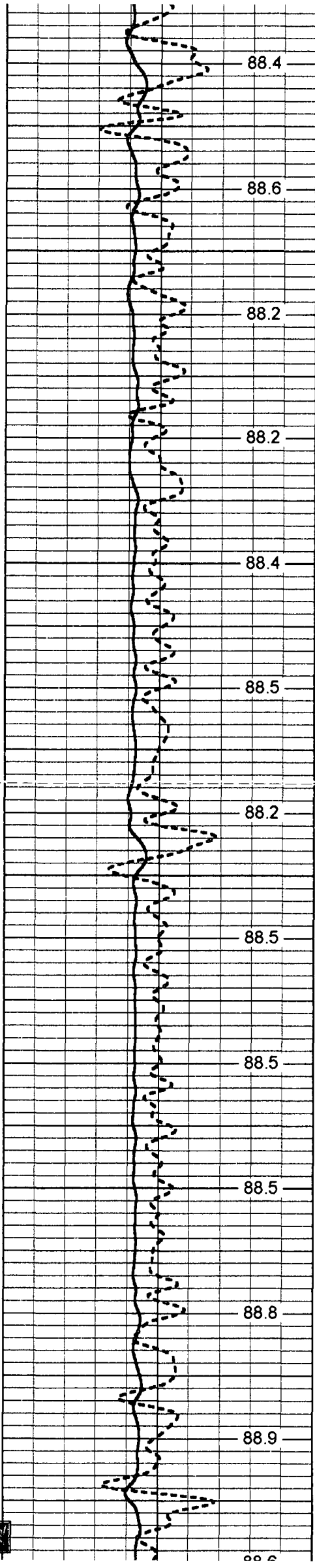
6713

88.3

1200

6797





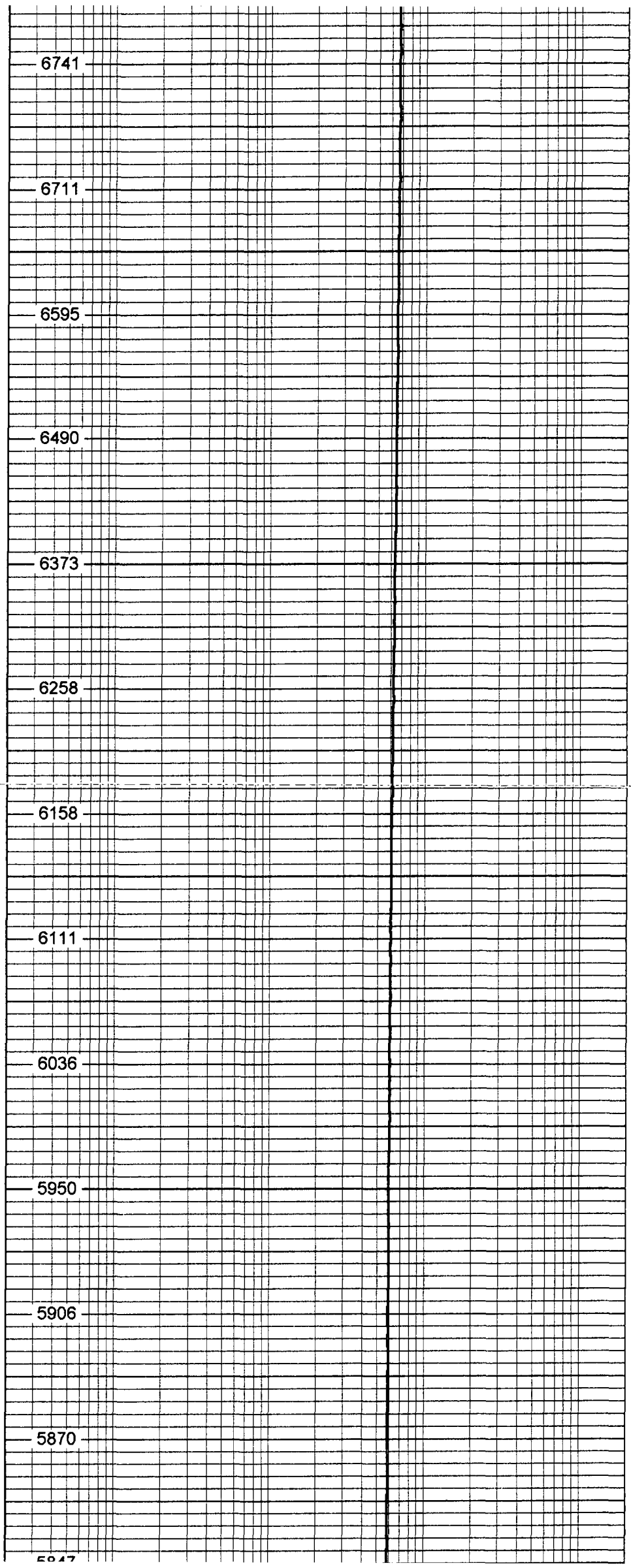
1250

1300

1350

1400

1450



88.6

5818

88.7

1500

5789

89.0

5755

89.0

5708

1550

89.0

5646

89.3

5623

89.0

1600

5548

89.5

5483

89.4

5405

1650

89.4

5599

89.7

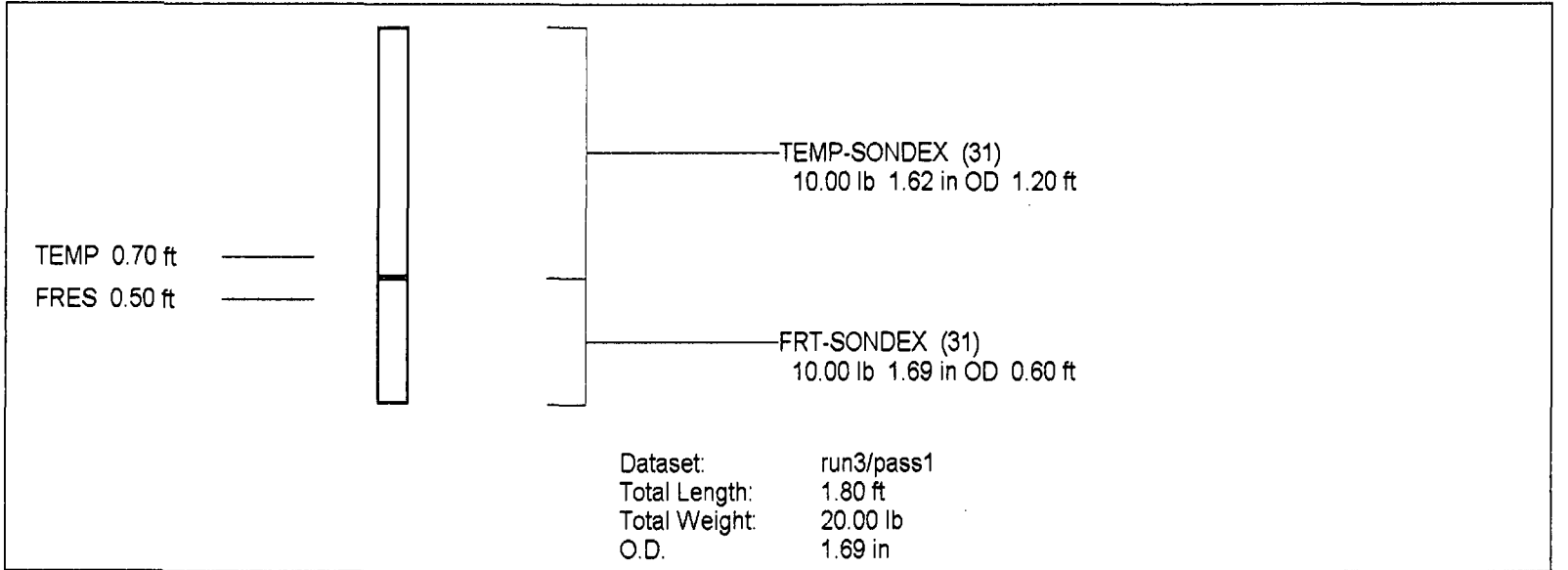
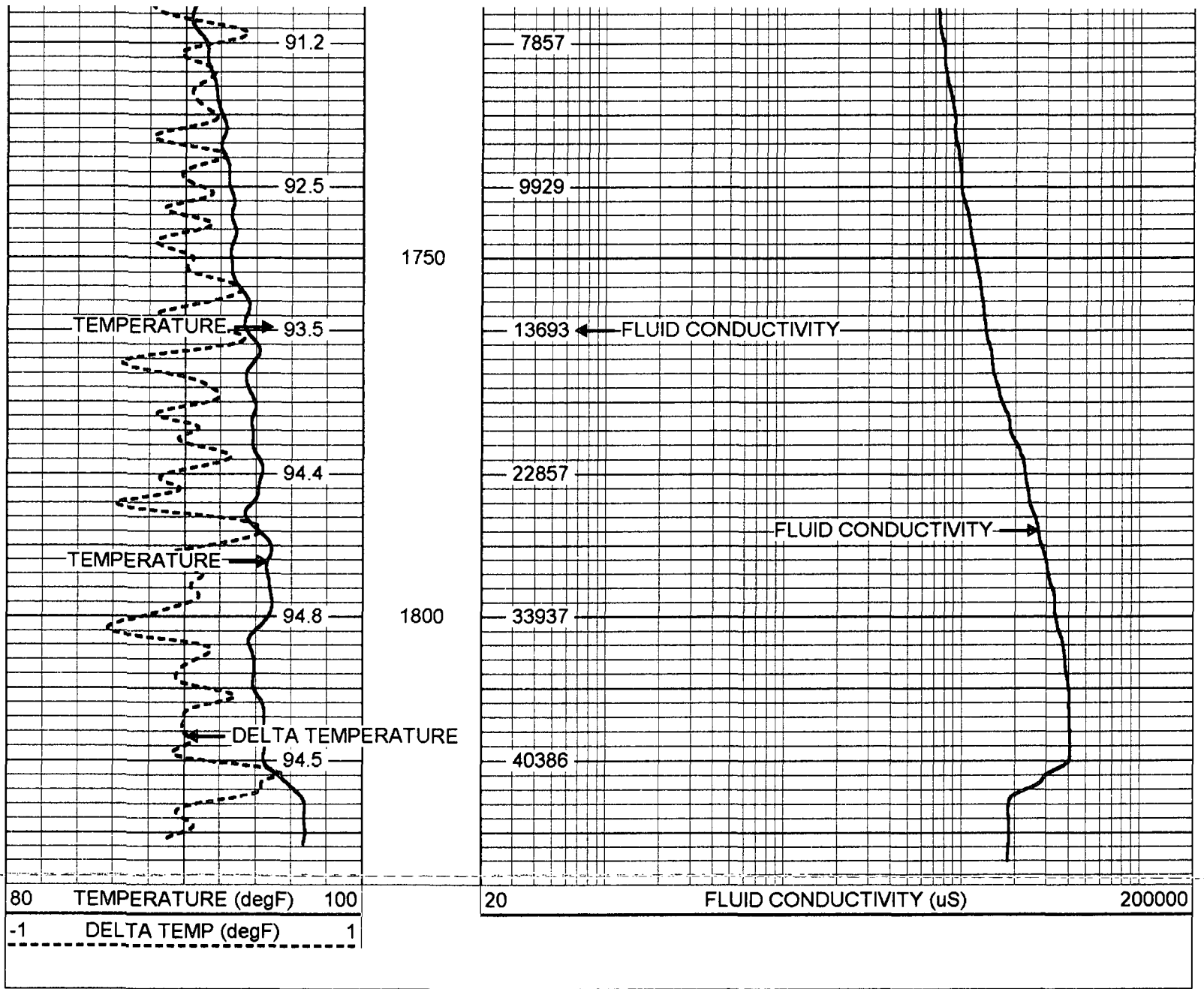
6093

90.0

1700

6662





### FRT Calibration Report

Serial Number:	31
Tool Model:	SONDEX
Performed:	Mon Apr 07 10:06:59 2003

Point #	Reading	Reference
1	31.000	1000.000

2	186.461	cps	10000.000
3	478.792	cps	25000.000
4	1027.350	cps	50000.000
5		cps	
6		cps	

**Temperature Calibration Report**

Serial Number: 31  
 Tool Model: SONDEX  
 Performed: Mon Apr 07 10:25:47 2003

Point #	Reading		Reference	
1	118.668	cps	36	degF
2	299.16	cps	77	degF
3	700.794	cps	160	degF