



**YOUNGQUIST  
BROTHERS, Inc**

GEOPHYSICAL LOGGING DIVISION

**HIGH  
RESOLUTION  
TEMPERATURE**

**RECEIVED**

APR 9 0 2004

Company MWH  
Well IW #1  
Field NORTH LEE COUNTY  
County LEE  
State FLORIDA

Company MWH  
Well IW #1  
Field NORTH LEE COUNTY  
County LEE  
State FLORIDA

Location  
Permanent Datum P  
Log Measured From P  
Drilling Measured From P  
Elevation 3.75'  
Other Services  
RTS  
Elevation  
K.B.  
D.F.  
G.L.

Date 07-NOV-2003  
Run Number RTS  
Depth Driller 2950'  
Depth Logger 2898'  
Bottom Logged Interval 2898'  
Top Log Interval SURFACE  
Open Hole Size 22.5" & 28.5"  
Type Fluid WATER  
Density / Viscosity NA  
Max. Recorded Temp. 103 F  
Estimated Cement Top NA  
Time Well Ready 0000  
Time Logger on Bottom 0000  
Equipment Number 102  
Location FT. MYERS  
Recorded By LEE  
Witnessed By H. KLEIN


Run Number	Bit Size	Borehole Record		Tubing Record			
		From	To	From	Weight	From	To
ONE	12.25"	SURFACE	501'			CASG	3010'
TWO	48.50"	SURFACE	505'			CASG	2580'
THREE	12.25"	CASING	1830'		22.5"		
FOUR	40.50"	CASING	1782'				2950'

Casing Record  
Surface String 42"  
Prod. String 30"  
Production String 20"  
Liner

<<< Fold Here >>>

All interpretations are opinions based on inferences from electrical or other measurements and we cannot and do not guarantee the accuracy or correctness of any interpretation, and we shall not, except in the case of gross or willful negligence on our part, be liable or responsible for any loss, costs, damages, or expenses incurred or sustained by anyone resulting from any interpretation made by any of our officers, agents or employees. These interpretations are also subject to our general terms and conditions set out in our current Price Schedule.

Comments



**YOUNGQUIST  
BROTHERS, Inc**  
GEOPHYSICAL LOGGING DIVISION

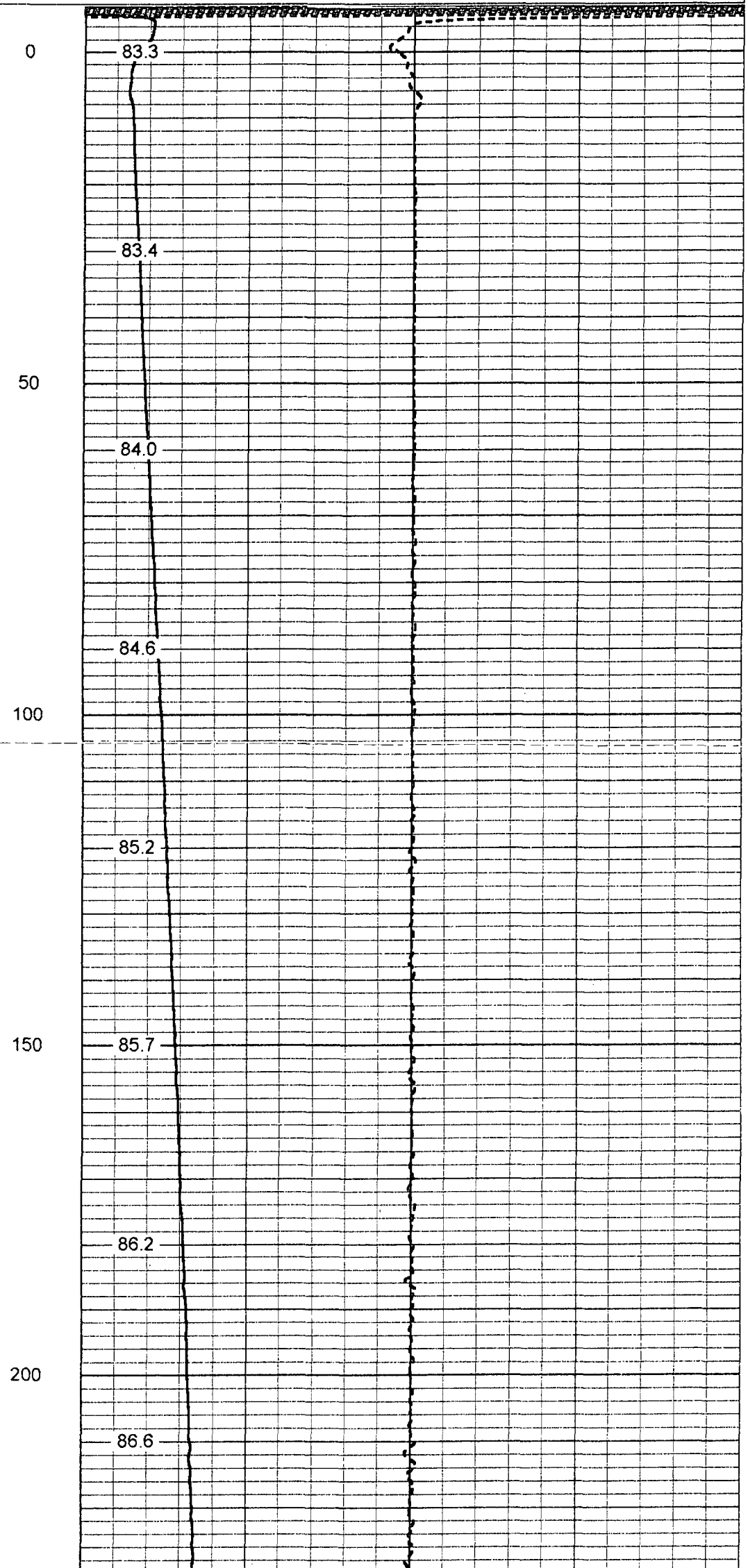
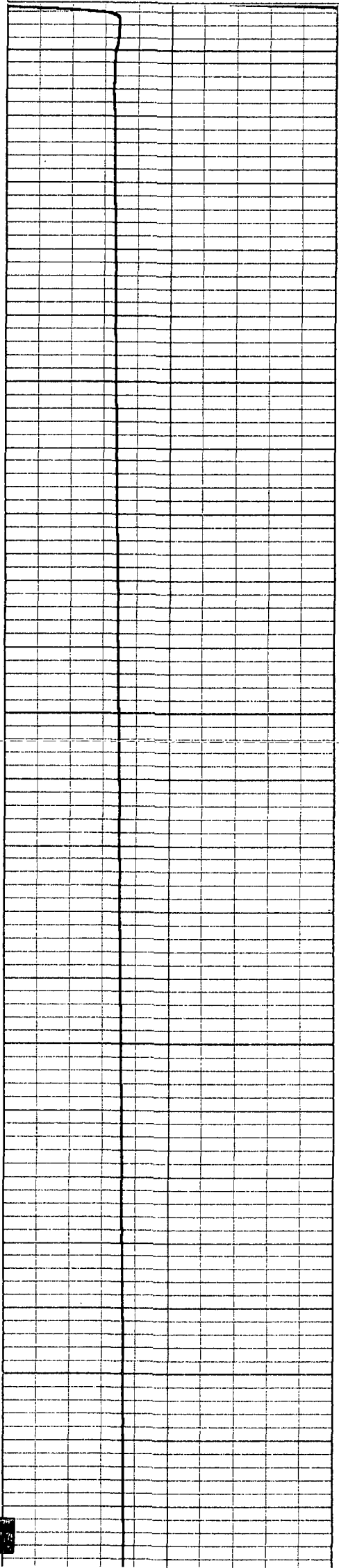
# TEMPERATURE

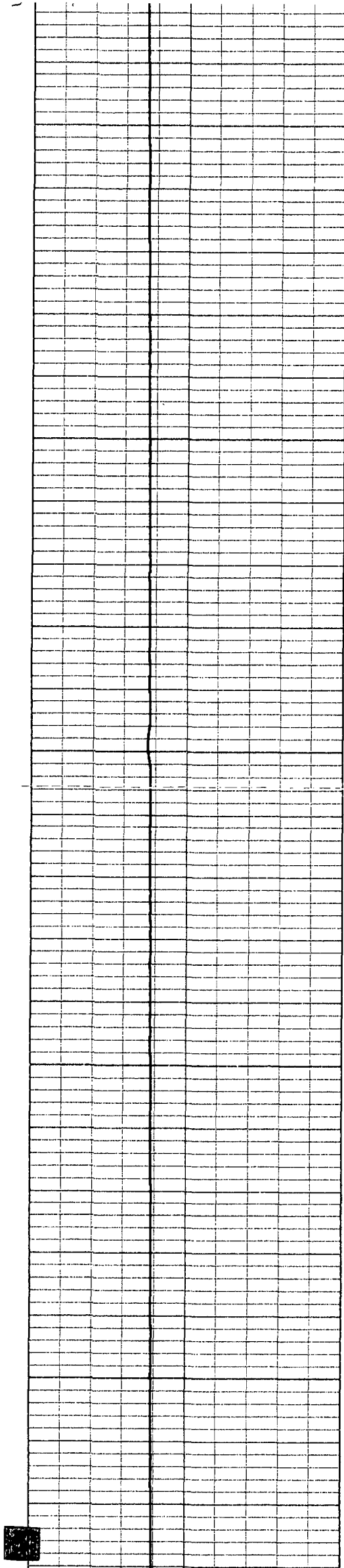
Database File: nleerts.db  
Dataset Pathname: TEMP  
Presentation Format: temp  
Dataset Creation: Fri Nov 07 14:03:23 2003 by Log 6.2\_B4

50 TEMPERATURE (degF) 150

80 TEMPERATURE (degF) 120

-5 DELTA TEMPERATURE (degF) 5





250

87.0

87.4

300

87.8

88.1

350

88.5

88.7

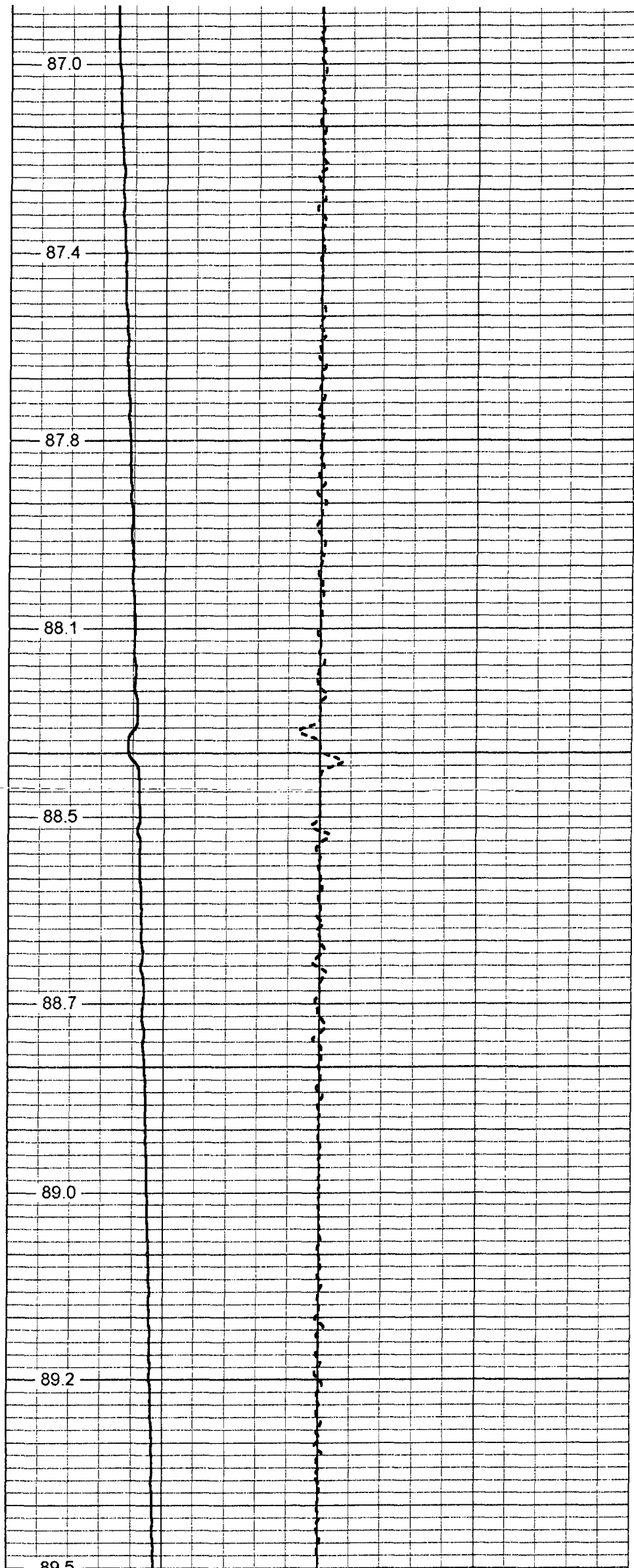
400

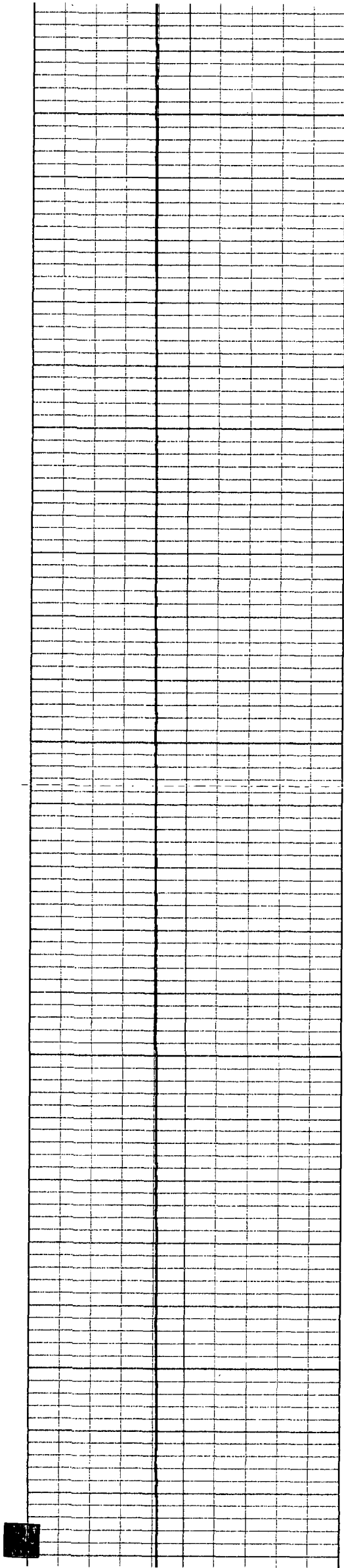
89.0

450

89.2

89.5





500

89.7

550

89.9

600

90.1

90.3

650

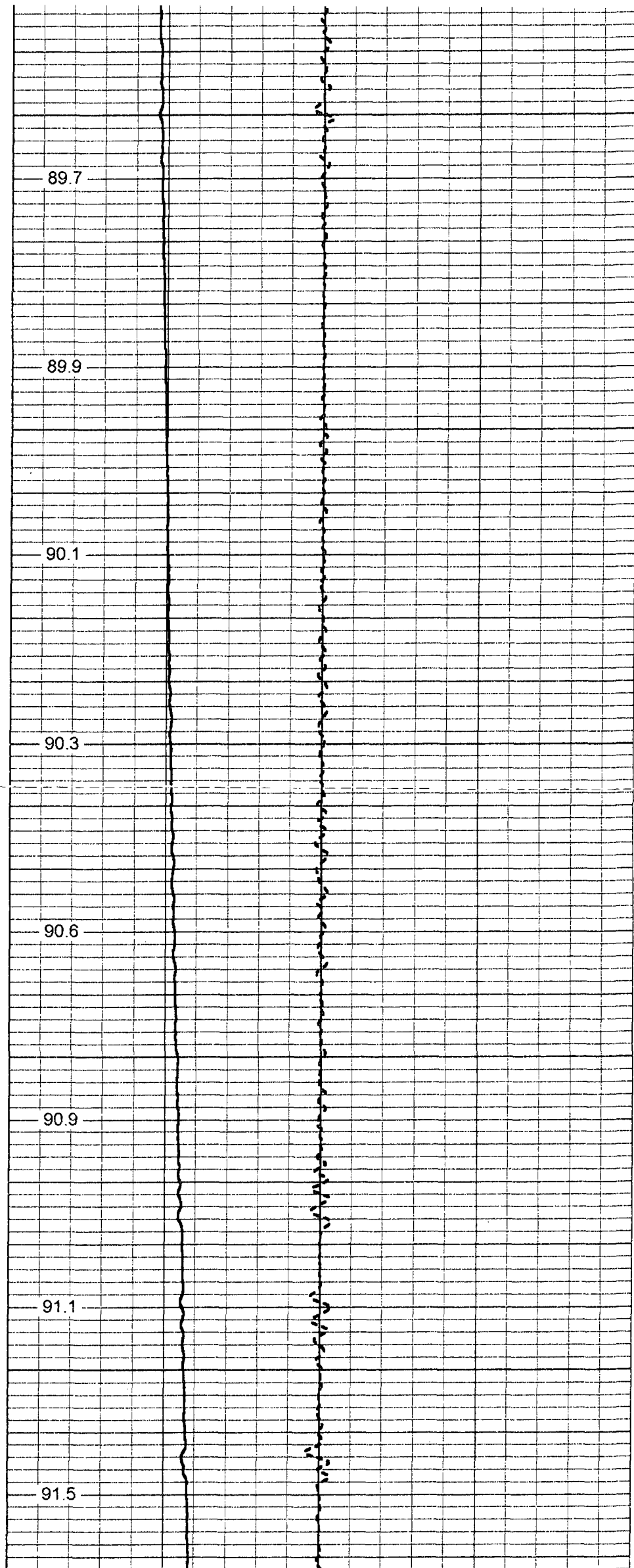
90.6

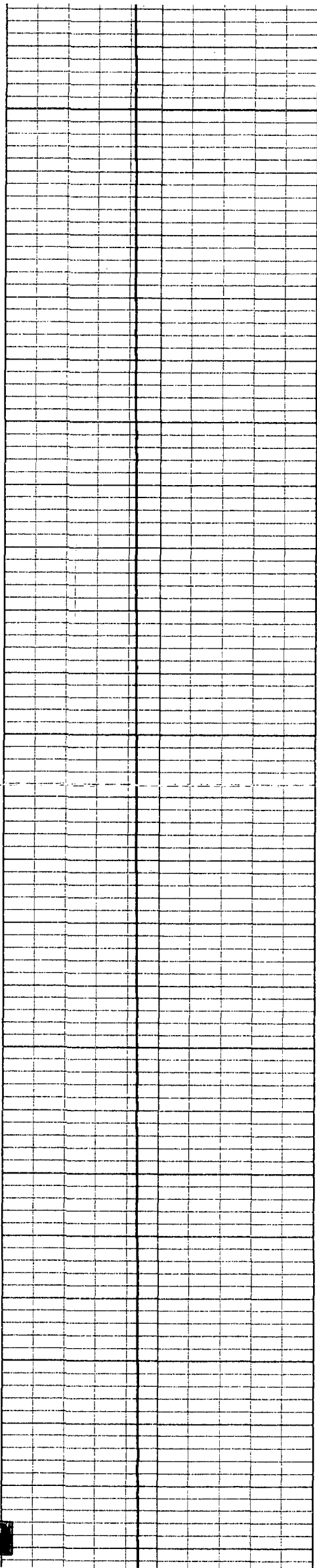
90.9

700

91.1

91.5





750

91.8

92.1

800

92.4

92.7

850

92.9

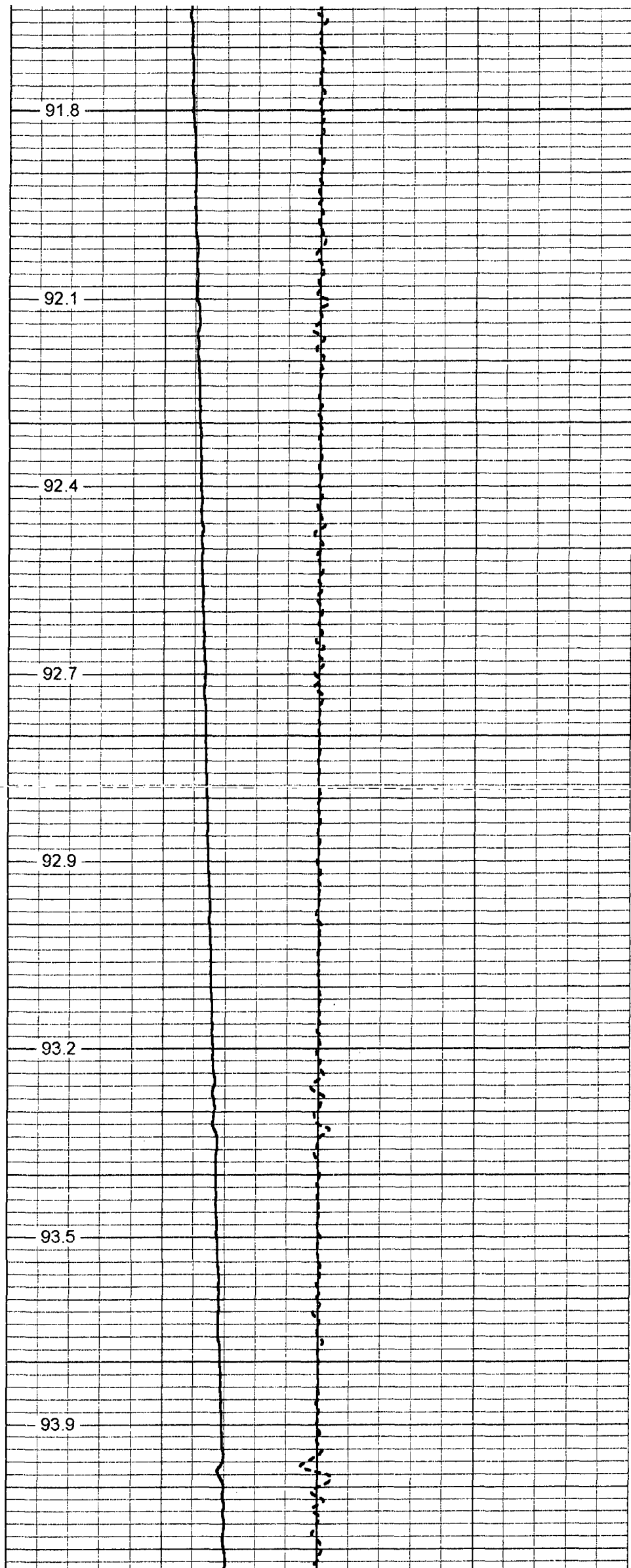
900

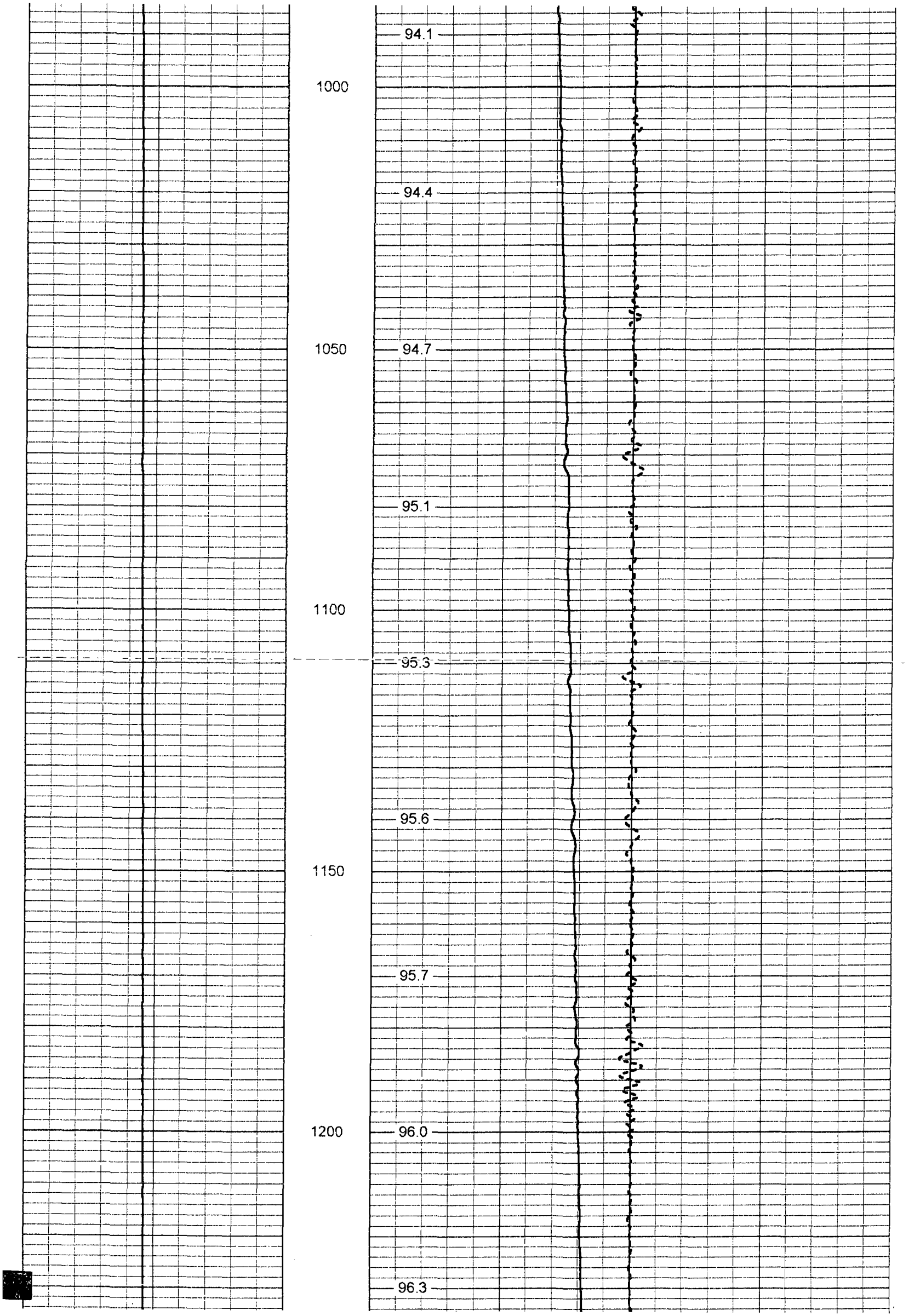
93.2

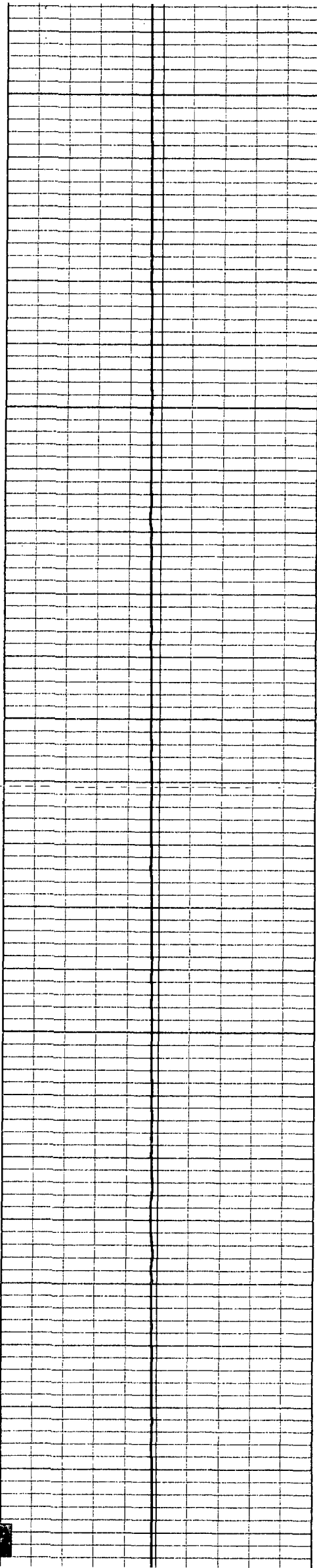
93.5

950

93.9







1250

96.6

1300

96.8

97.2

1350

97.4

97.8

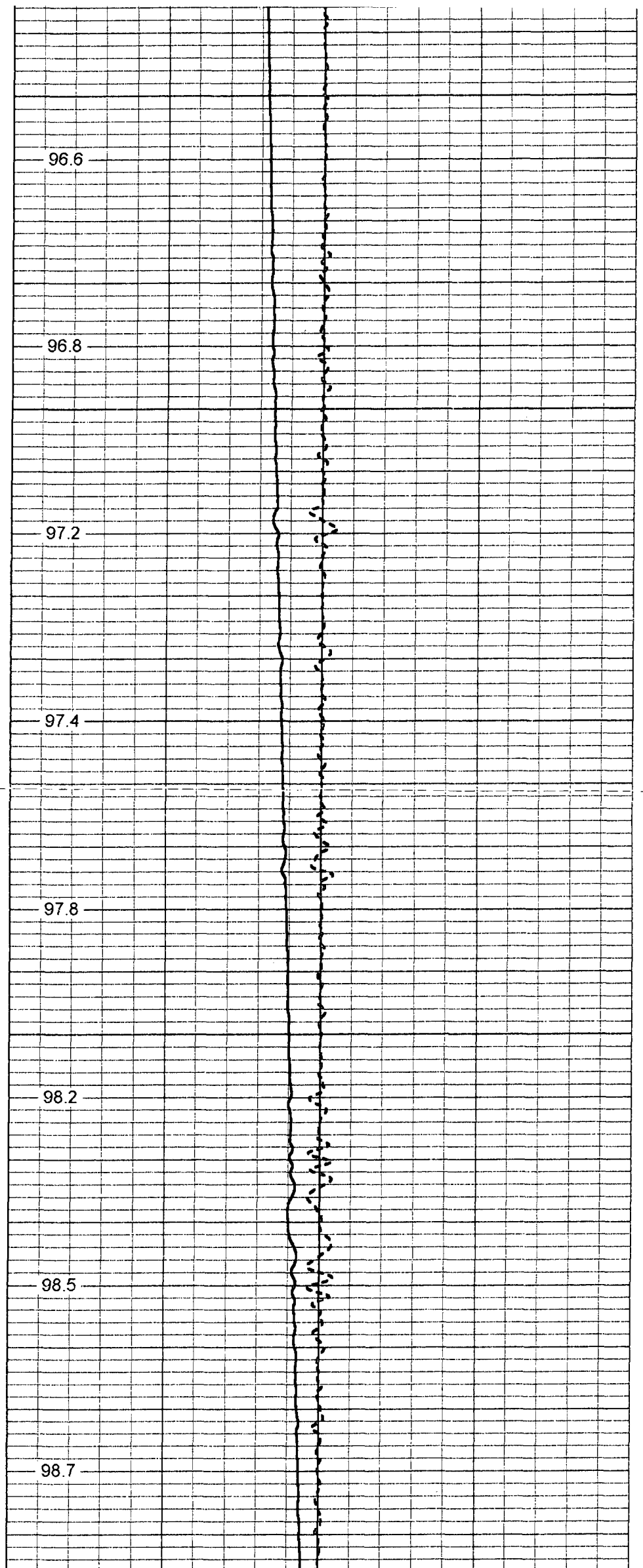
1400

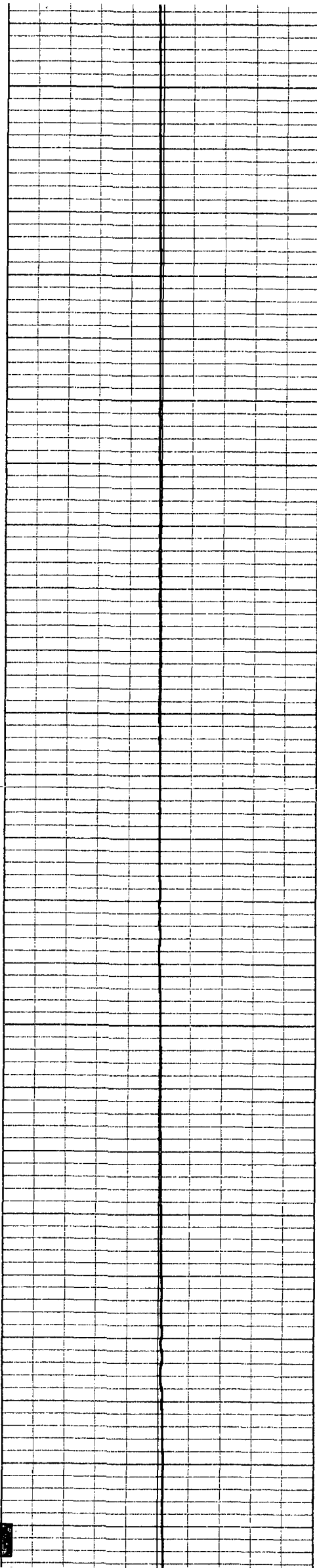
98.2

98.5

1450

98.7





1500

99.0

1550

99.4

99.5

1600

99.8

100.1

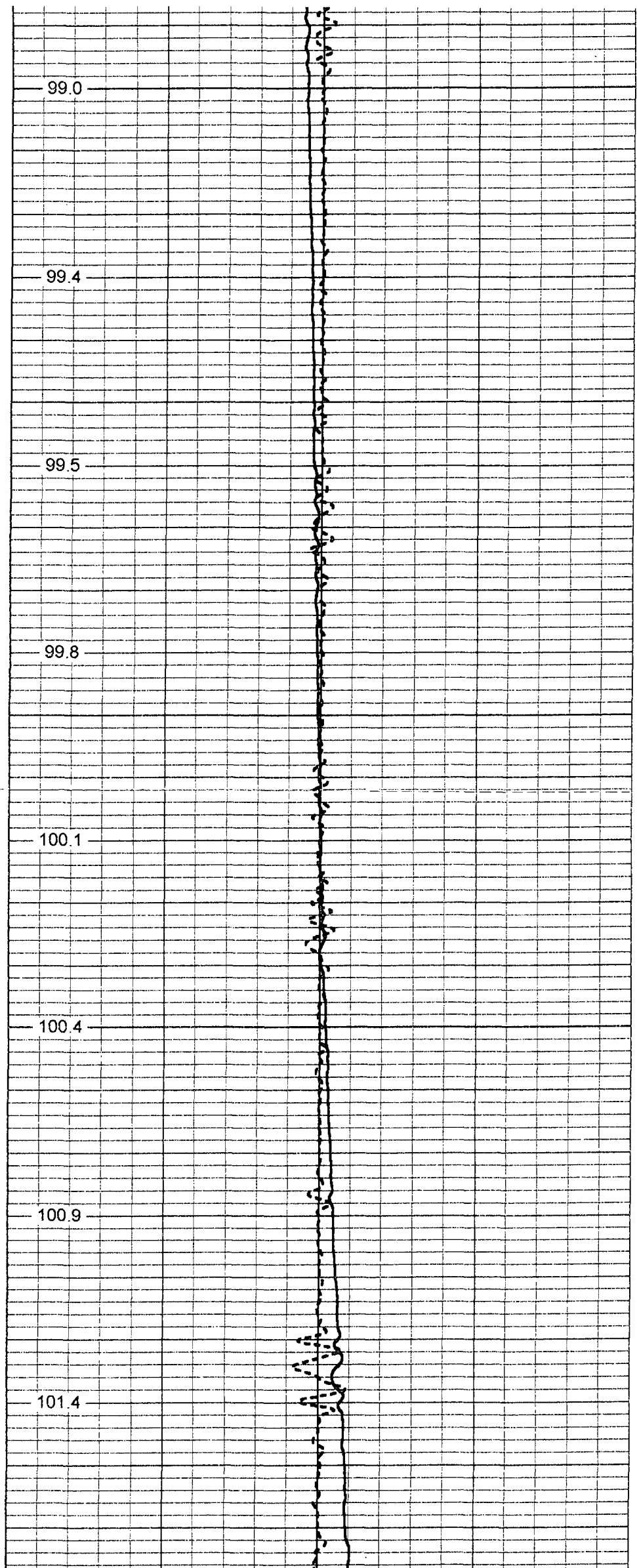
1650

100.4

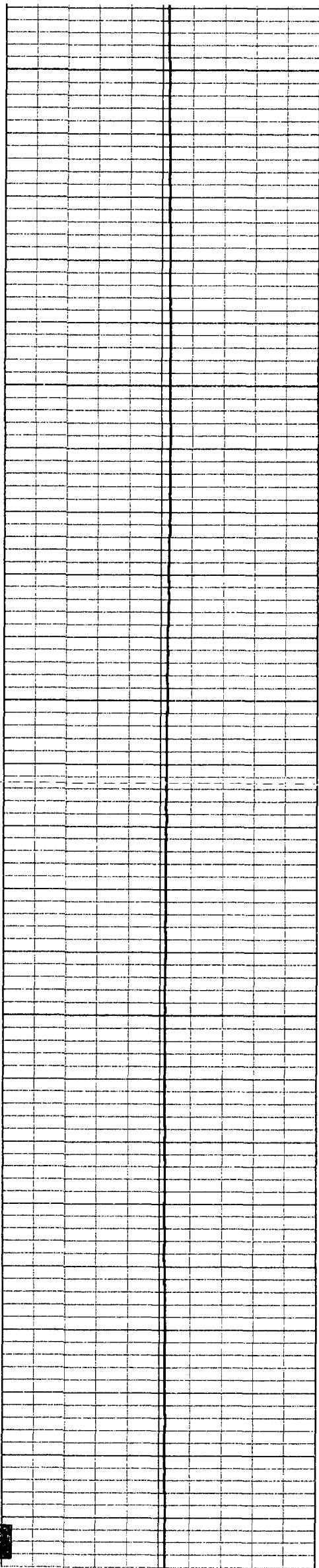
100.9

1700

101.4







1750

102.7

1800

102.9

102.6

1850

102.1

1900

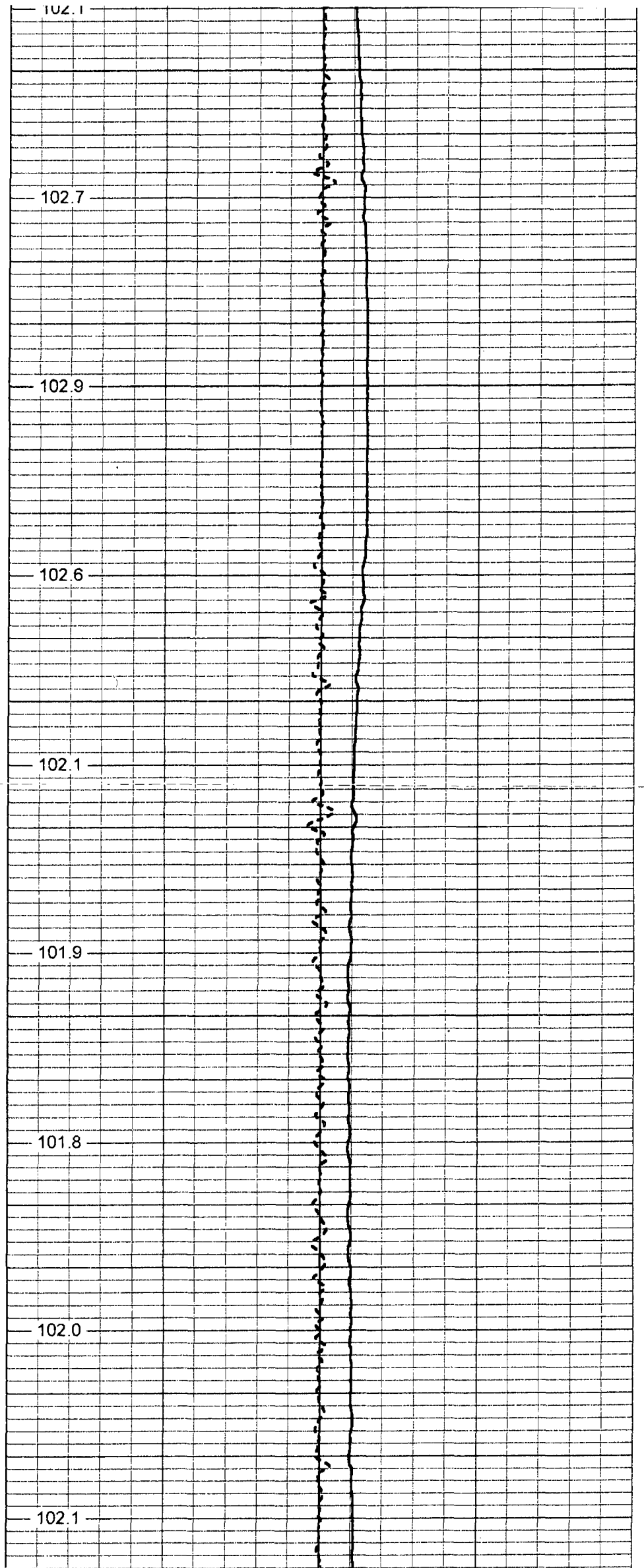
101.9

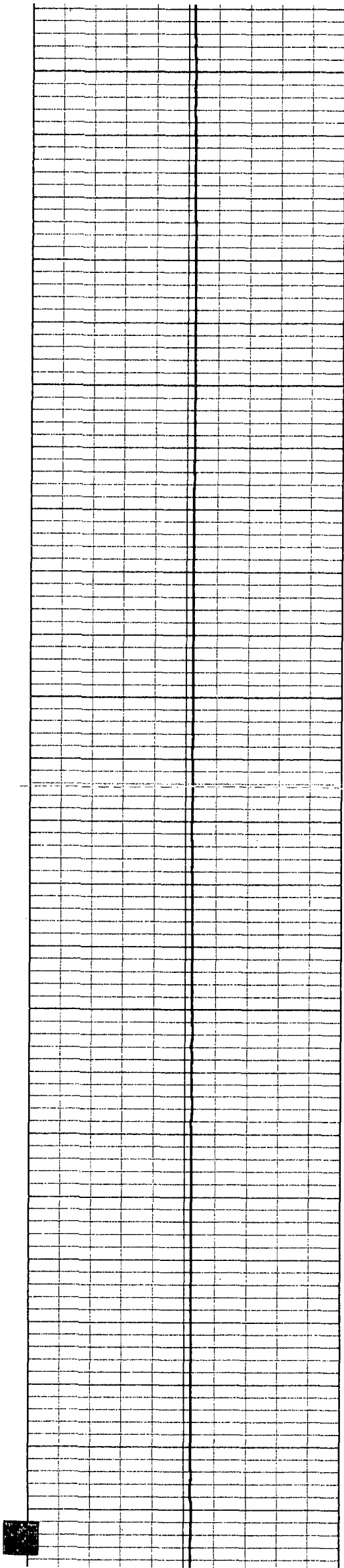
101.8

1950

102.0

102.1





2000

102.3

2050

102.6

102.5

2100

102.4

102.4

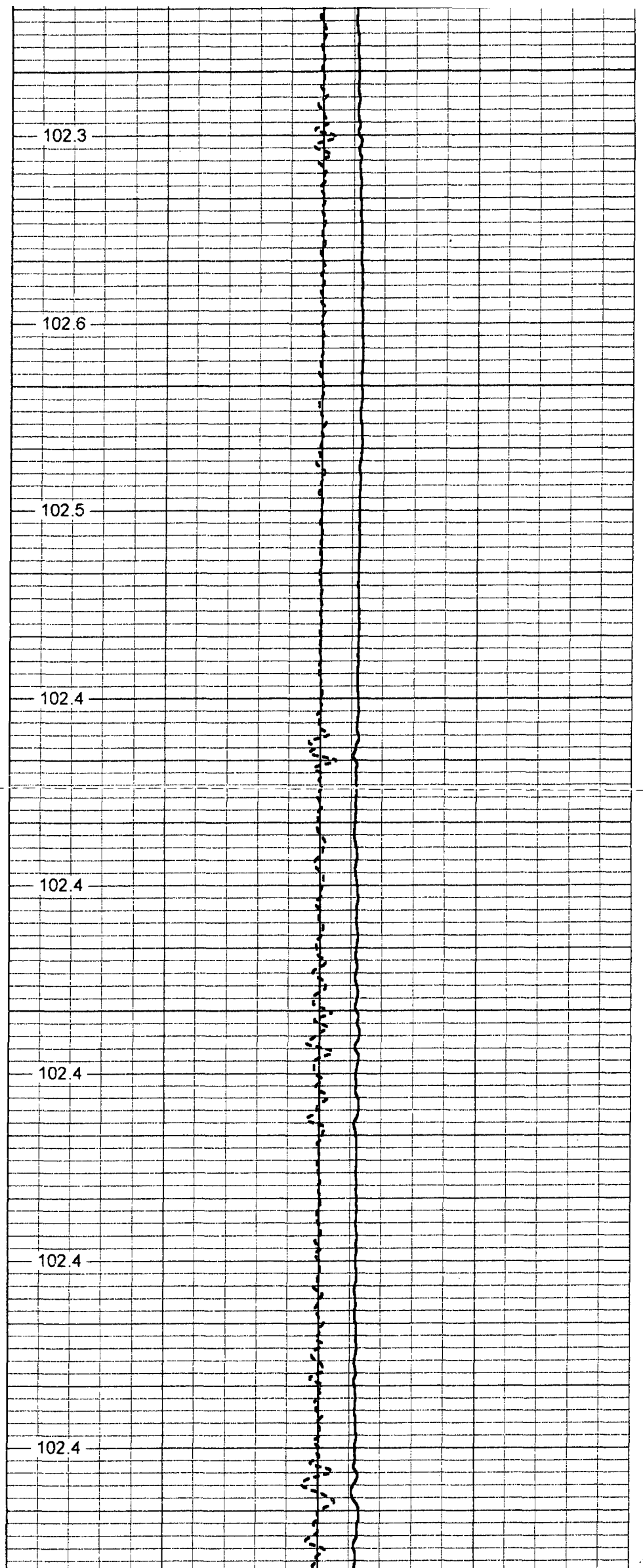
2150

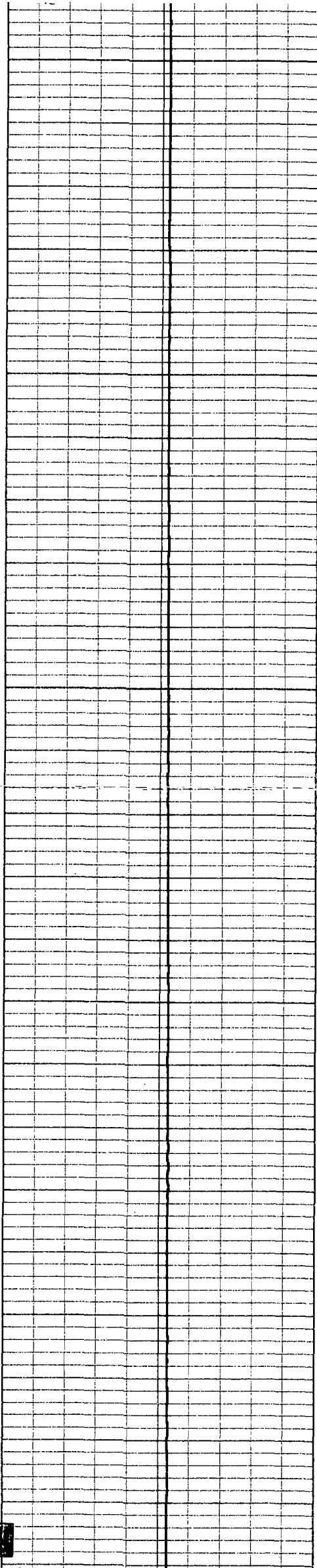
102.4

102.4

2200

102.4





2250

102.4

102.3

2300

102.4

102.5

2350

102.8

2400

102.9

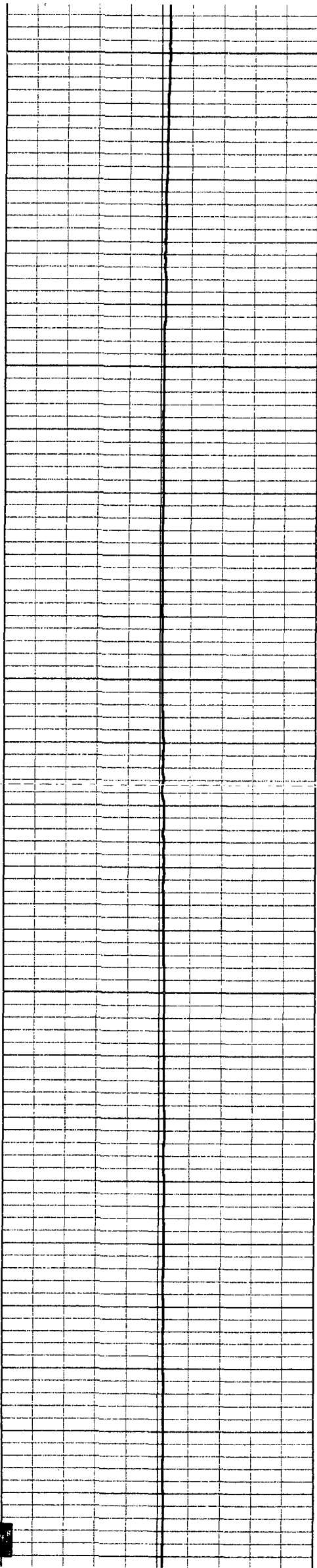
103.0

2450

103.1

103.0





2500

102.0

2550

101.2

100.9

2600

101.4

101.6

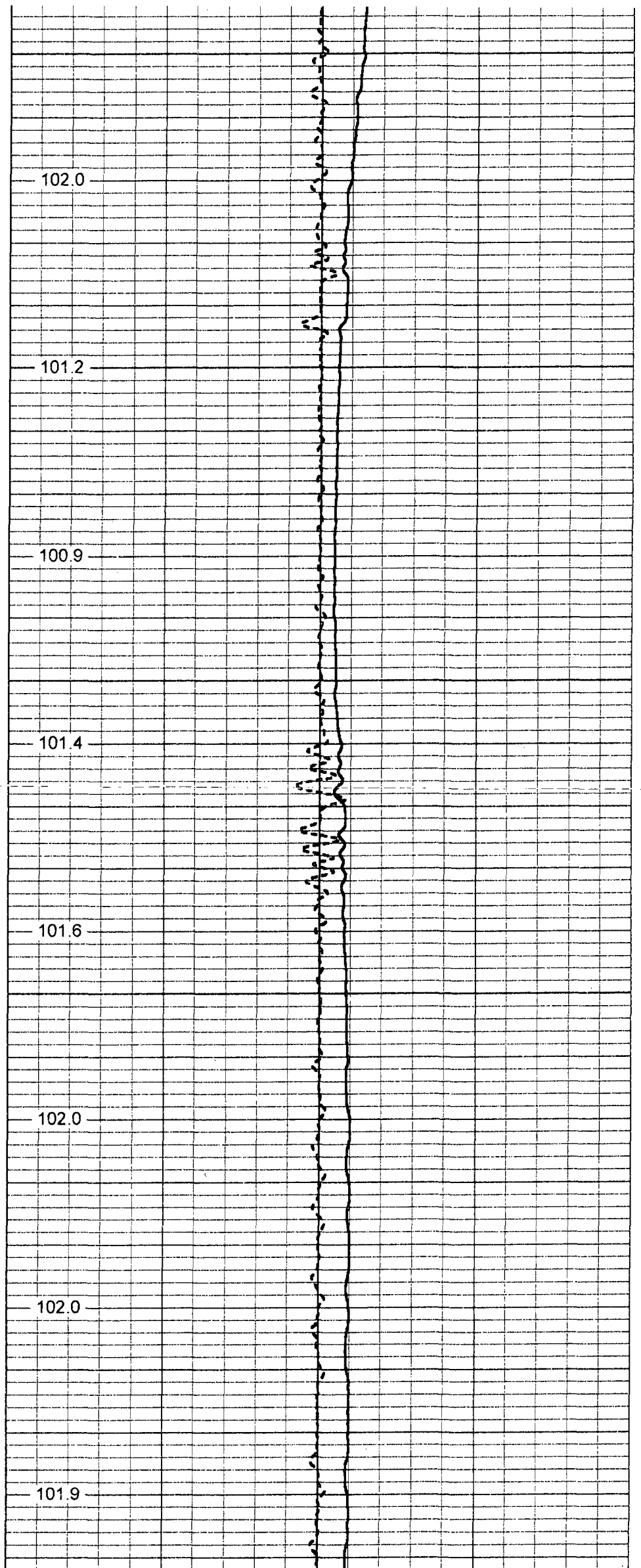
2650

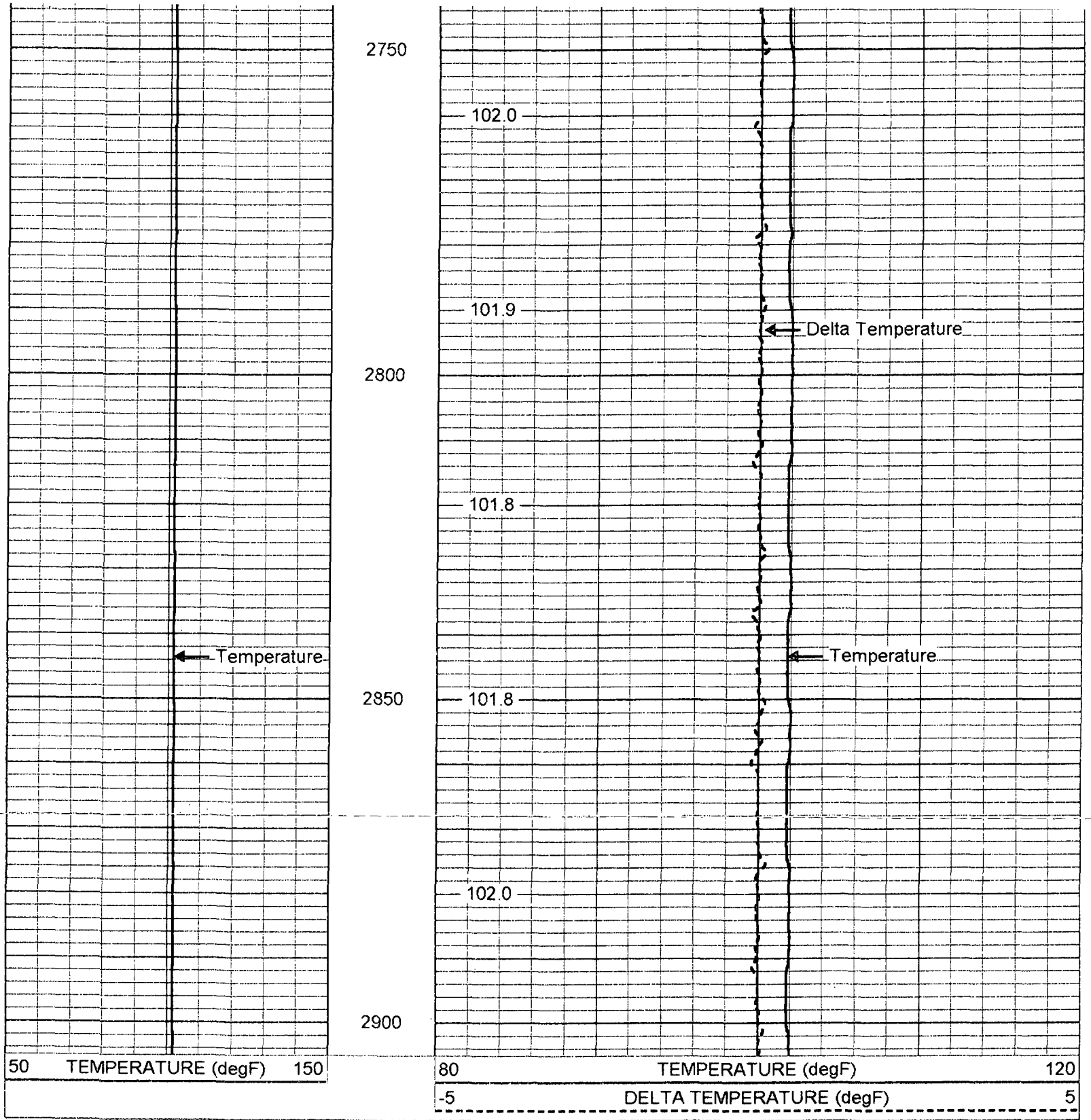
102.0

2700

102.0

101.9





### Temperature Calibration Report

Serial Number: 952  
 Tool Model: RTS  
 Performed: Mon Jul 14 11:54:18 2003

Point #	Reading		Reference	
1	631.719	cps	42	degF
2	1063.1	cps	83	degF
3	1748.82	cps	147	degF



TEMP-RTS (952)  
70.00 lb 1.69 in OD 25.50 ft

TEMP 0.10 ft

Dataset: run1/TEMP  
Total Length: 25.50 ft  
Total Weight: 70.00 lb  
O.D.: 1.69 in