



**YOUNGQUIST BROTHERS, Inc**  
 GEOPHYSICAL LOGGING DIVISION

**HIGH-RESOLUTION  
 RECEIVED - TEMPERATURE  
 LOG**  
 SEP 29 2008

Company **LEE COUNTY UTILITIES**  
 Well **IW-1**  
 Field **NORTH LEE COUNTY R.O.W.T.**  
 County **LEE**  
 State **FLORIDA**

Company **LEE COUNTY UTILITIES**  
 Well **IW-1**  
 Field **NORTH LEE COUNTY R.O.W.T.P.**  
 County **LEE** State **FLORIDA**

Location	Permanent Datum	GL	Elevation	Other Services VIDEO RTS
	Log Measured From	GL		
	Drilling Measured From	GL		

Date	8-SEPT-2008			
Run Number	08 MIT			
Depth Driller	2950'			
Depth Logger	2717'			
Bottom Logged Interval	2717'			
Top Log Interval	SURFACE			
Open Hole Size	22.5"			
Type Fluid	WATER			
Density / Viscosity	NA			
Max. Recorded Temp.	98 F			
Estimated Cement Top	NA			
Time Well Ready	0800			
Time Logger on Bottom	0800			
Equipment Number	103			
Location	FT. MYERS			
Recorded By	CATHEY			
Witnessed By	D. ACQUAVIVA			

Borehole Record			Borehole Record				
Run Number	Bit	From	To	Run No.	Bit	From	To

Casing Record	Size	Wgt/ft	Top	Bottom
Surface String				
Prot. String				
Production String	20"	500' W.T.	SURFACE	2585'
Liner	12"	FRP	SURFACE	2580'
TUBING				

<<< Fold Here >>>

All interpretations are opinions based on inferences from electrical or other measurements and we cannot and do not guarantee the accuracy or correctness of any interpretation, and we shall not, except in the case of gross or willful negligence on our part, be liable or responsible for any loss, costs, damages, or expenses incurred or sustained by anyone resulting from any interpretation made by any of our officers, agents or employees. These interpretations are also subject to our general terms and conditions set out in our current Price Schedule.

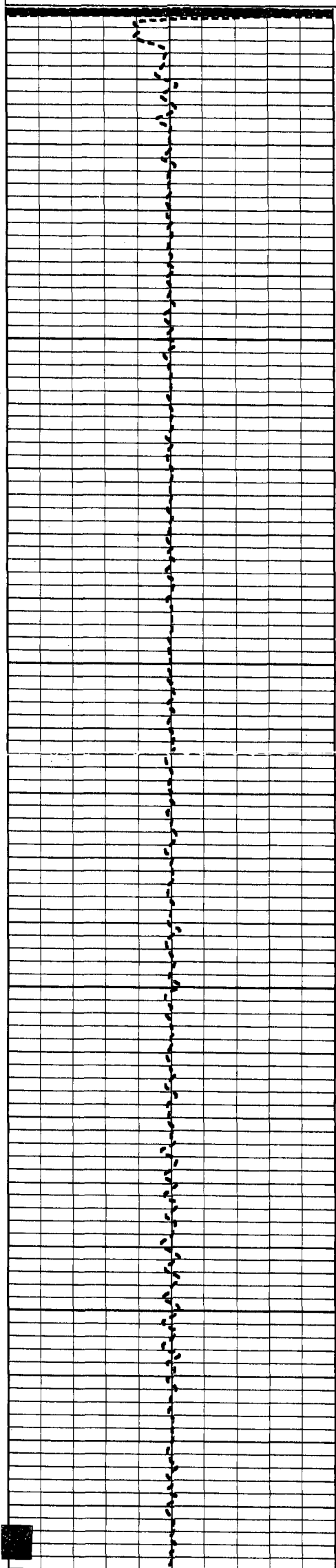
**Comments**

*(This area is currently blank for comments.)*



# TEMPERATURE

Database File: nlee\_08.db  
 Dataset Pathname: MIT/pass1  
 Presentation Format: temp  
 Dataset Creation: Mon Sep 08 12:50:32 2008 by Log 6.2\_B4  
 Charted by: Depth in Feet scaled 1:240



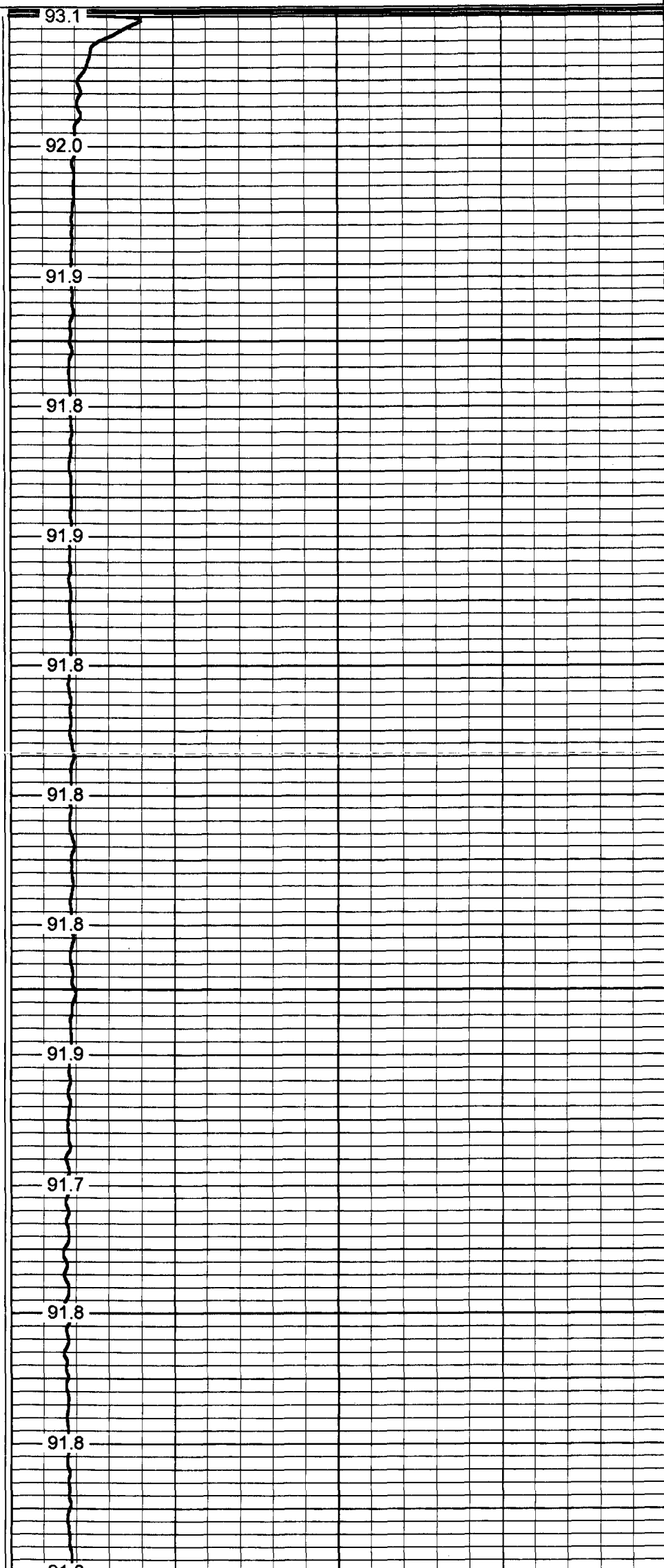
0

50

100

150

200



93.1

92.0

91.9

91.8

91.9

91.8

91.8

91.8

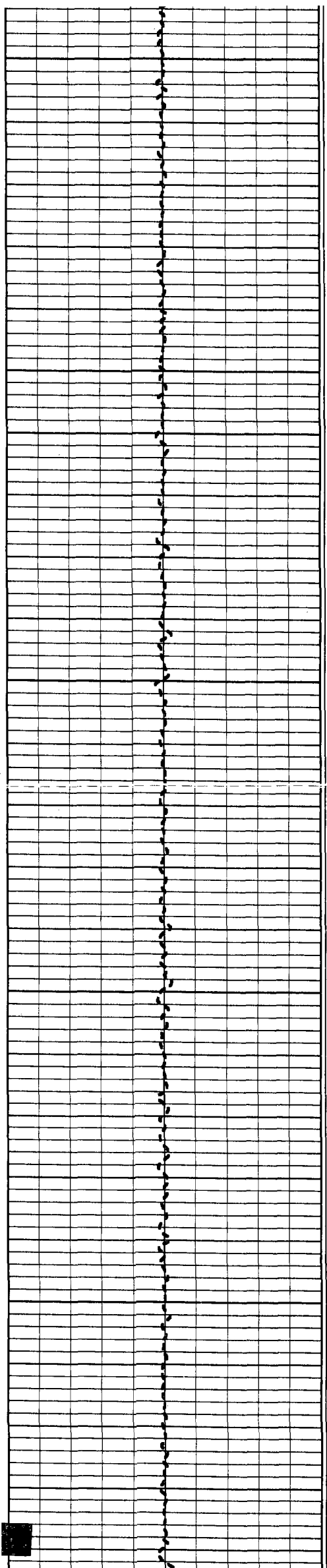
91.9

91.7

91.8

91.8

91.6



250

91.9

91.9

300

91.9

92.0

92.0

350

91.9

92.0

400

92.1

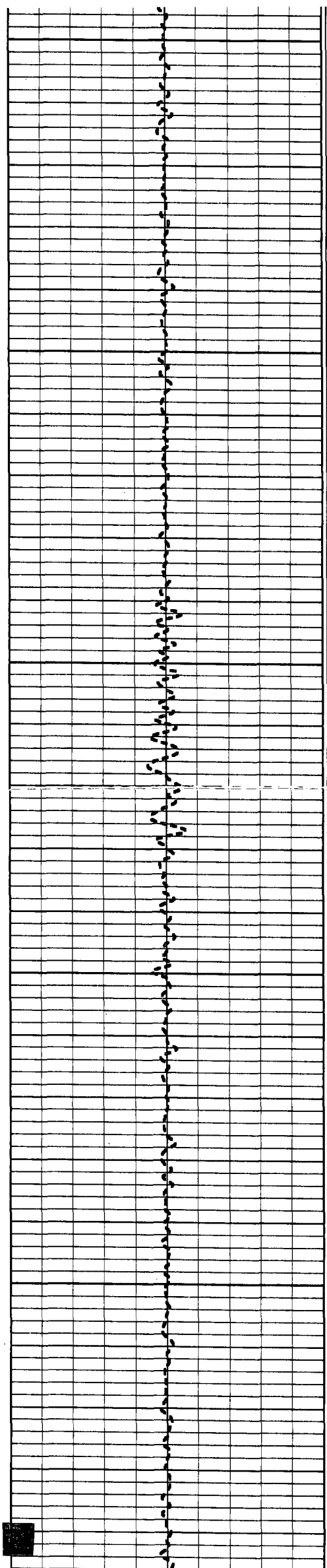
92.0

450

92.0

92.1

92.0



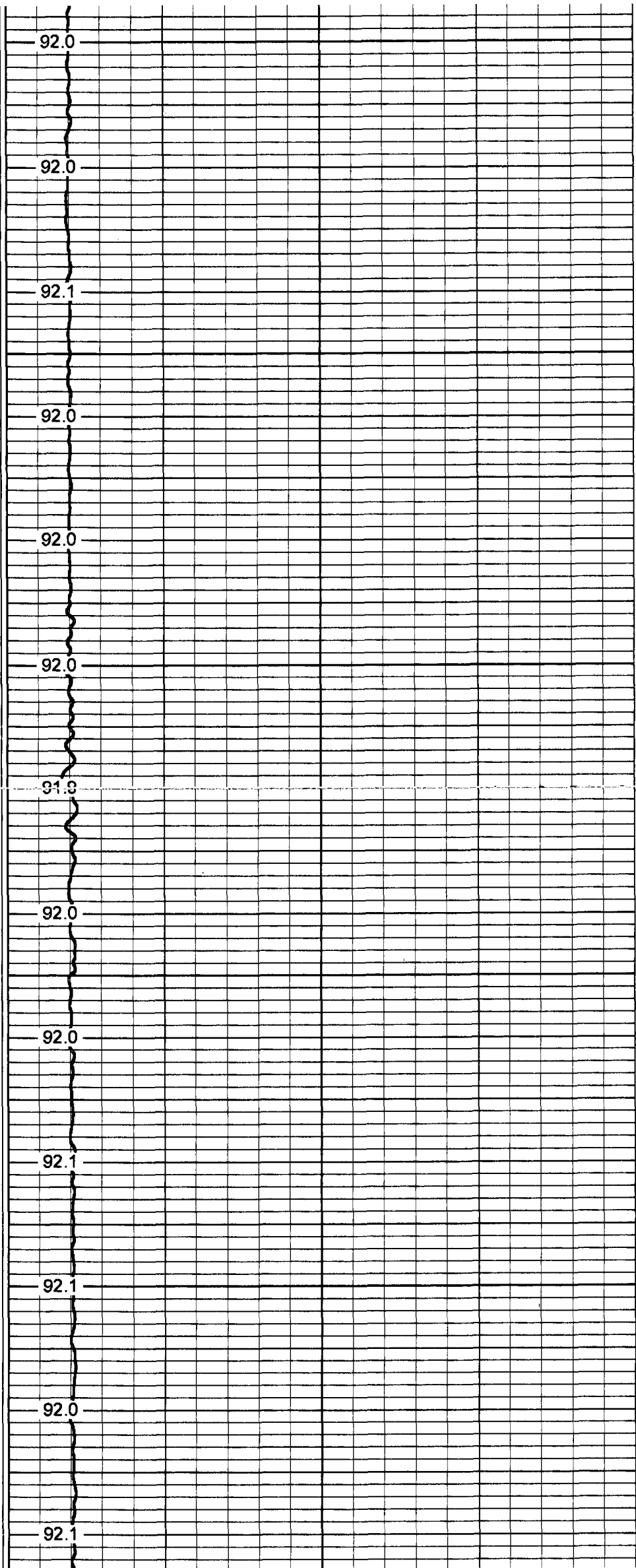
500

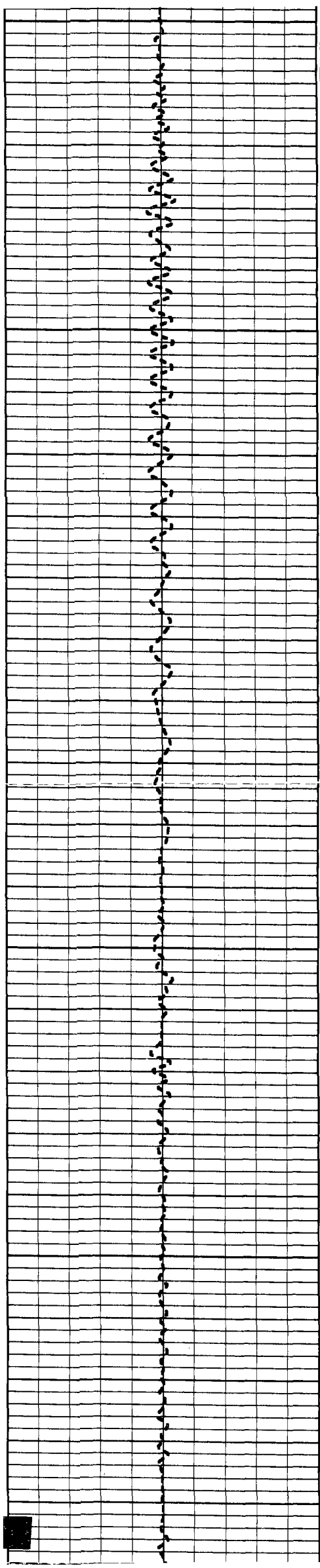
550

600

650

700





750

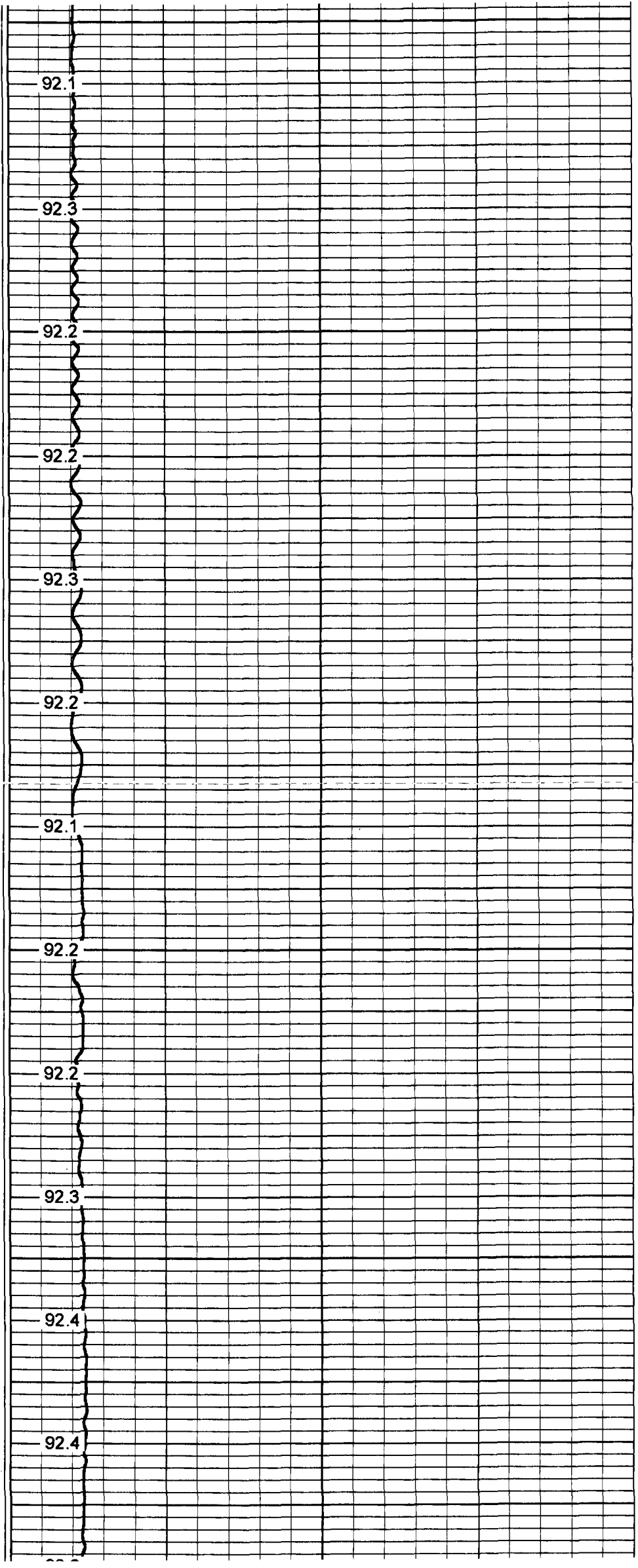
800

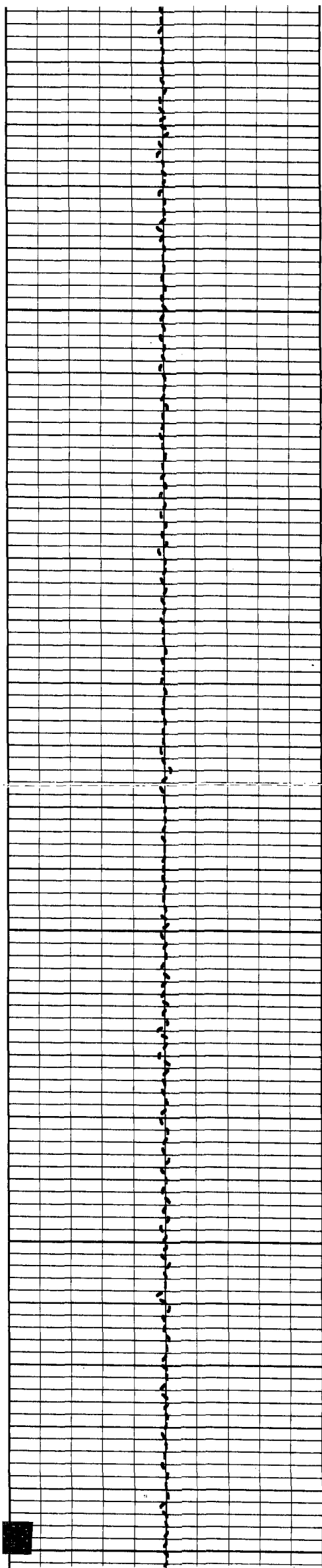
850

900

950

1000





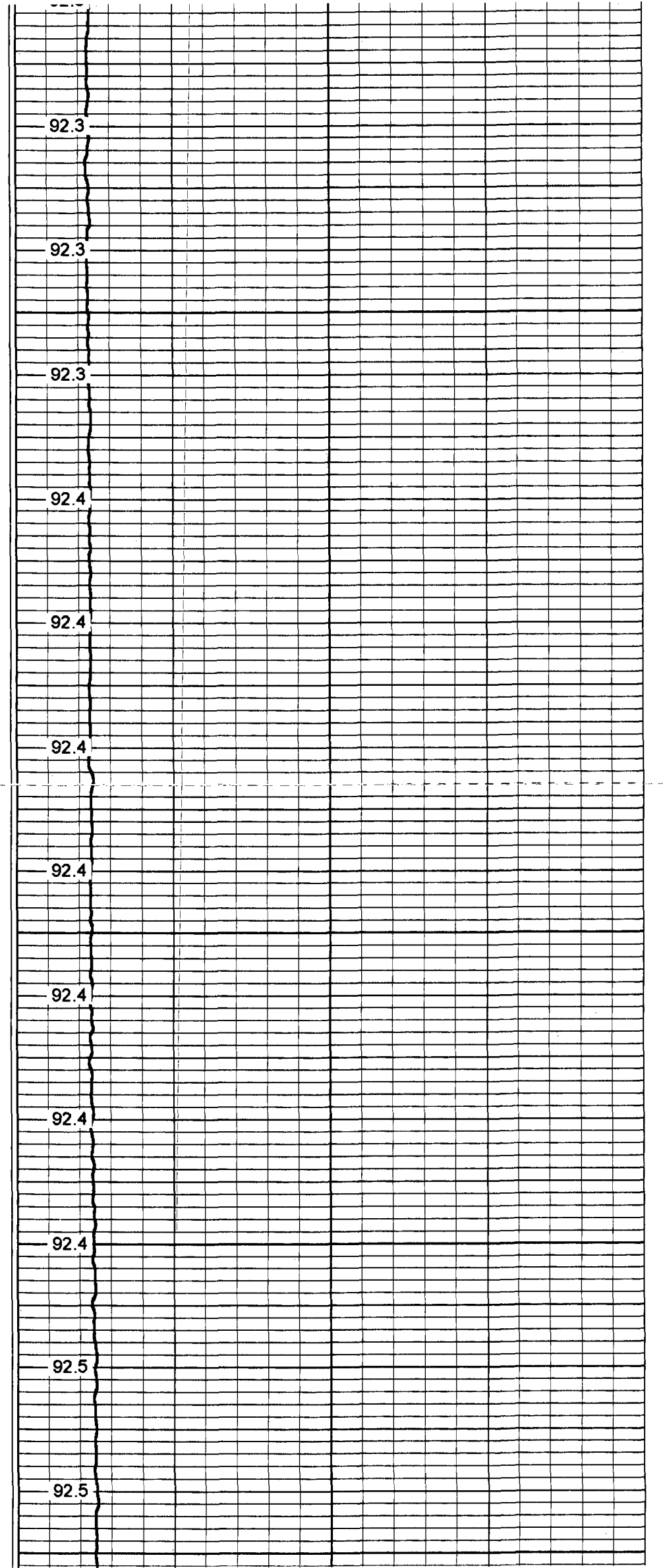
1050

1100

1150

1200

1250



92.3

92.3

92.3

92.4

92.4

92.4

92.4

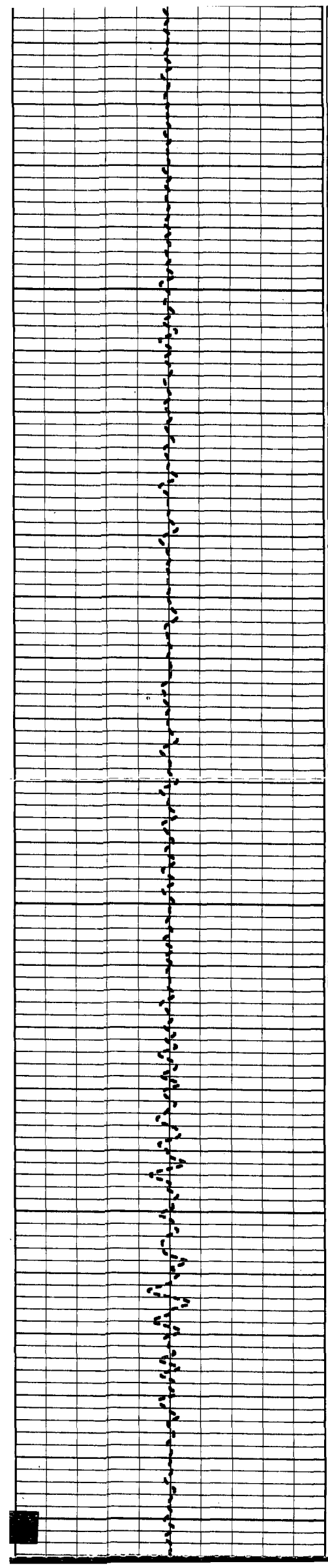
92.4

92.4

92.4

92.5

92.5



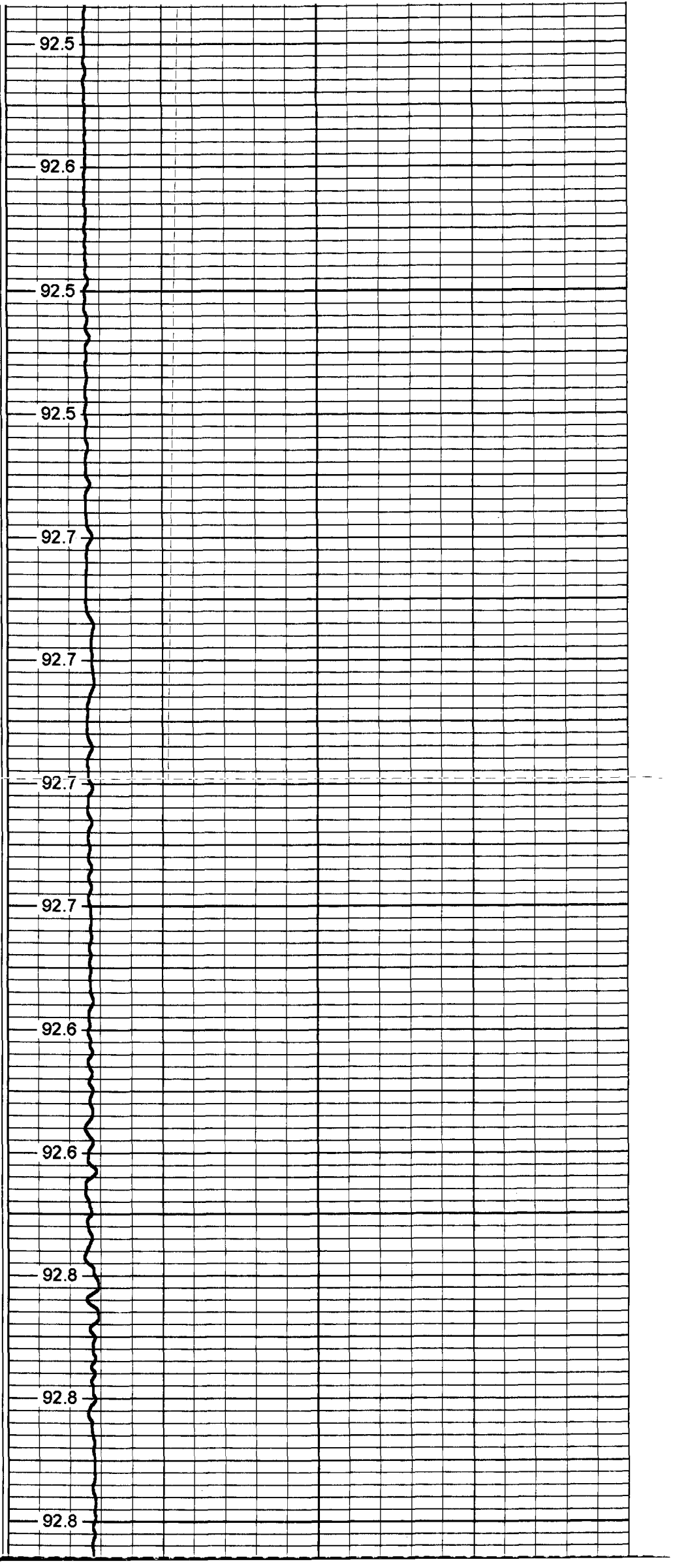
1300

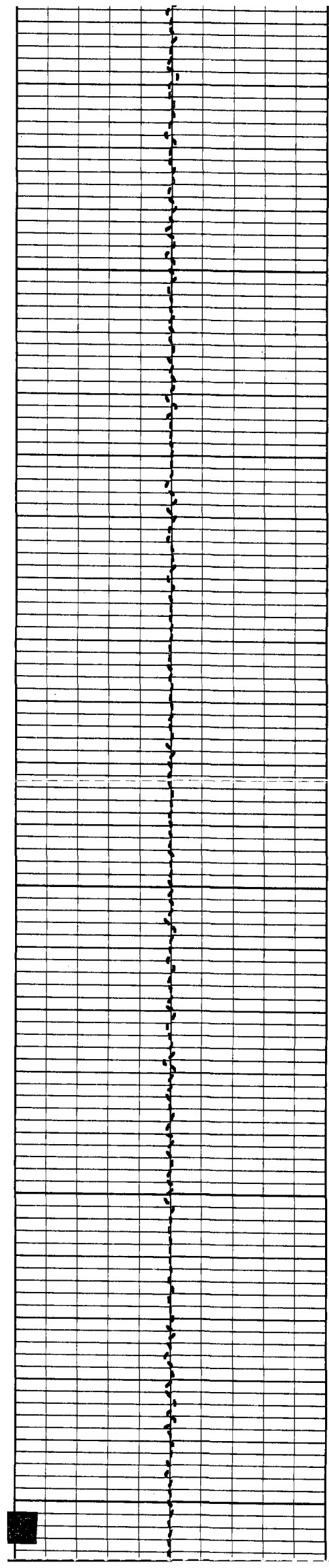
1350

1400

1450

1500





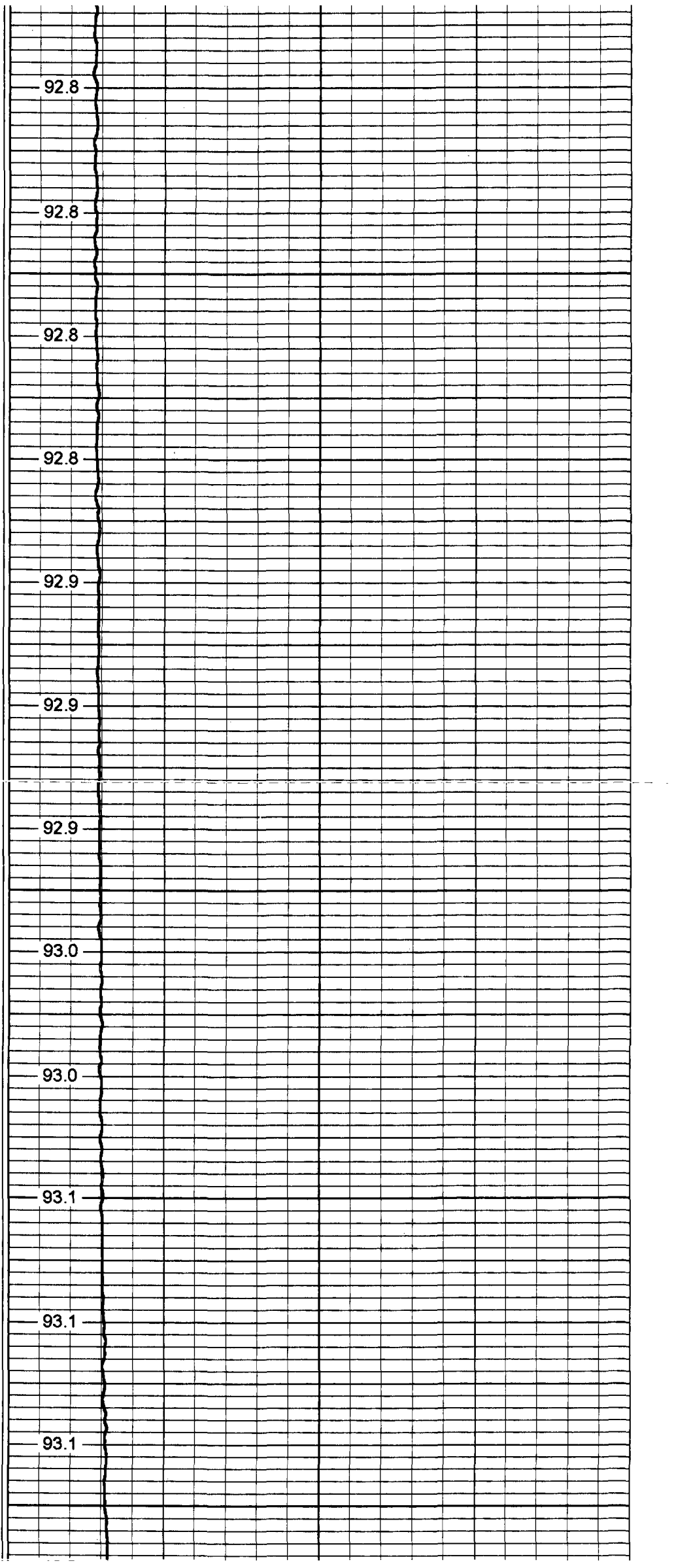
1550

1600

1650

1700

1750



92.8

92.8

92.8

92.8

92.9

92.9

92.9

93.0

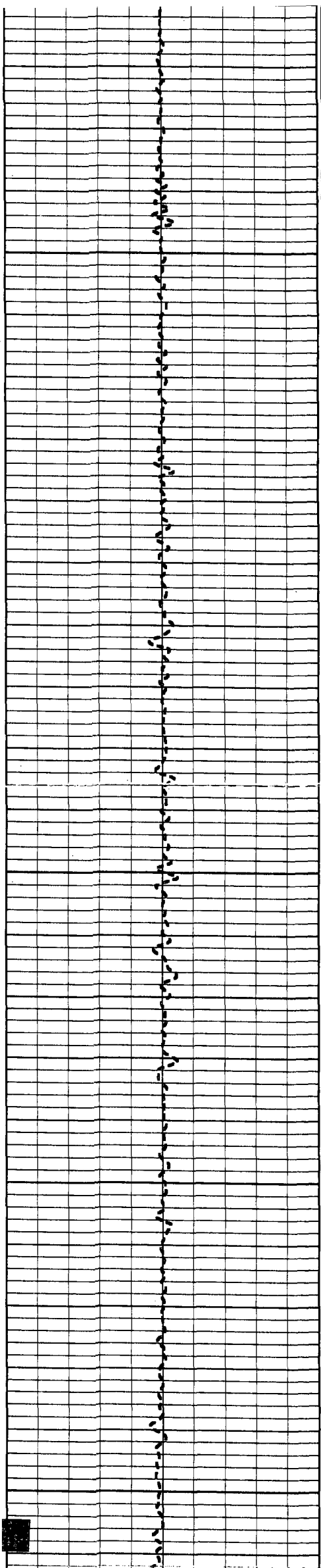
93.0

93.1

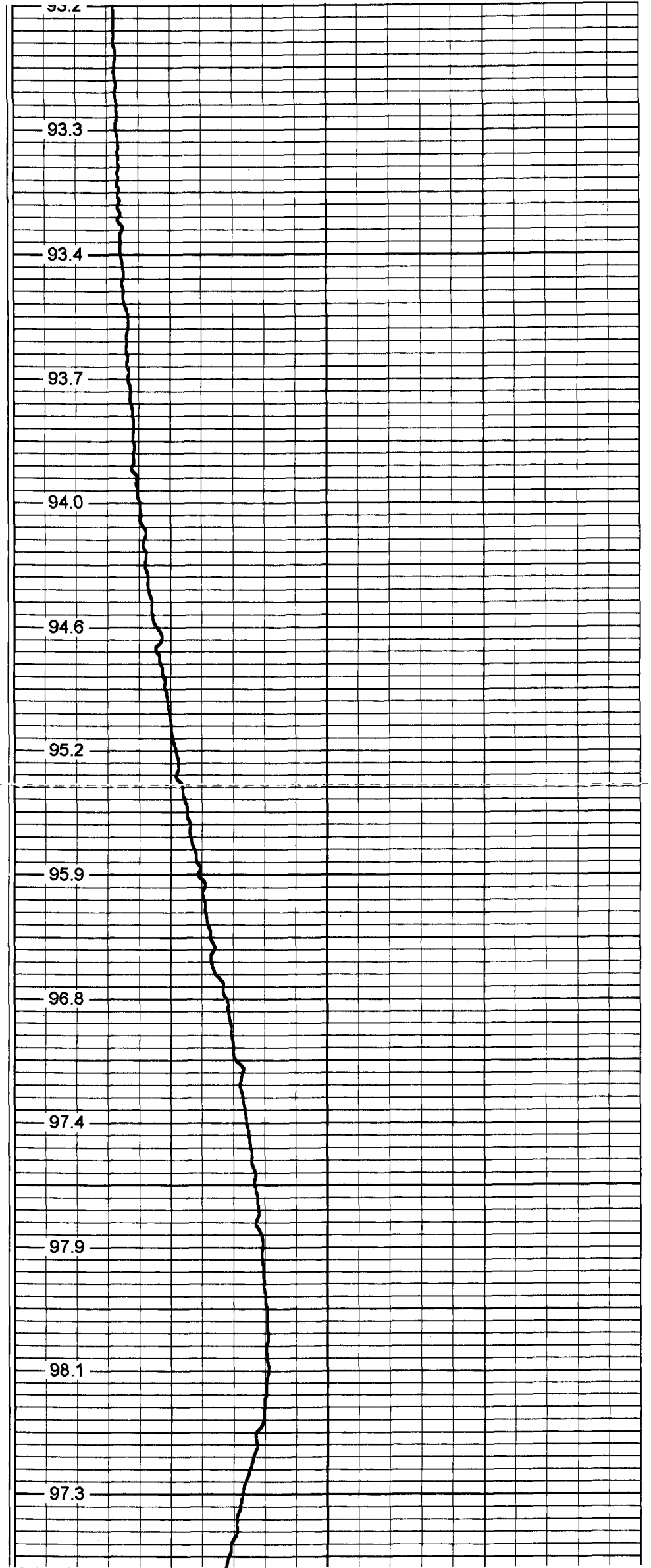
93.1

93.1





1800  
1850  
1900  
1950  
2000





2050

2100

2150

2200

2250

96.2

95.1

93.8

93.7

93.6

93.4

93.5

93.5

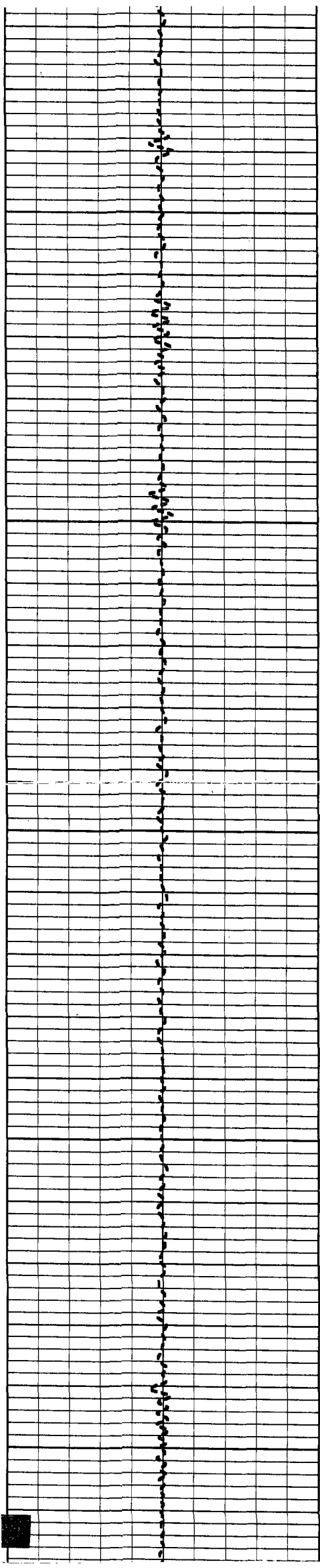
93.6

93.5

93.6

93.5

93.4



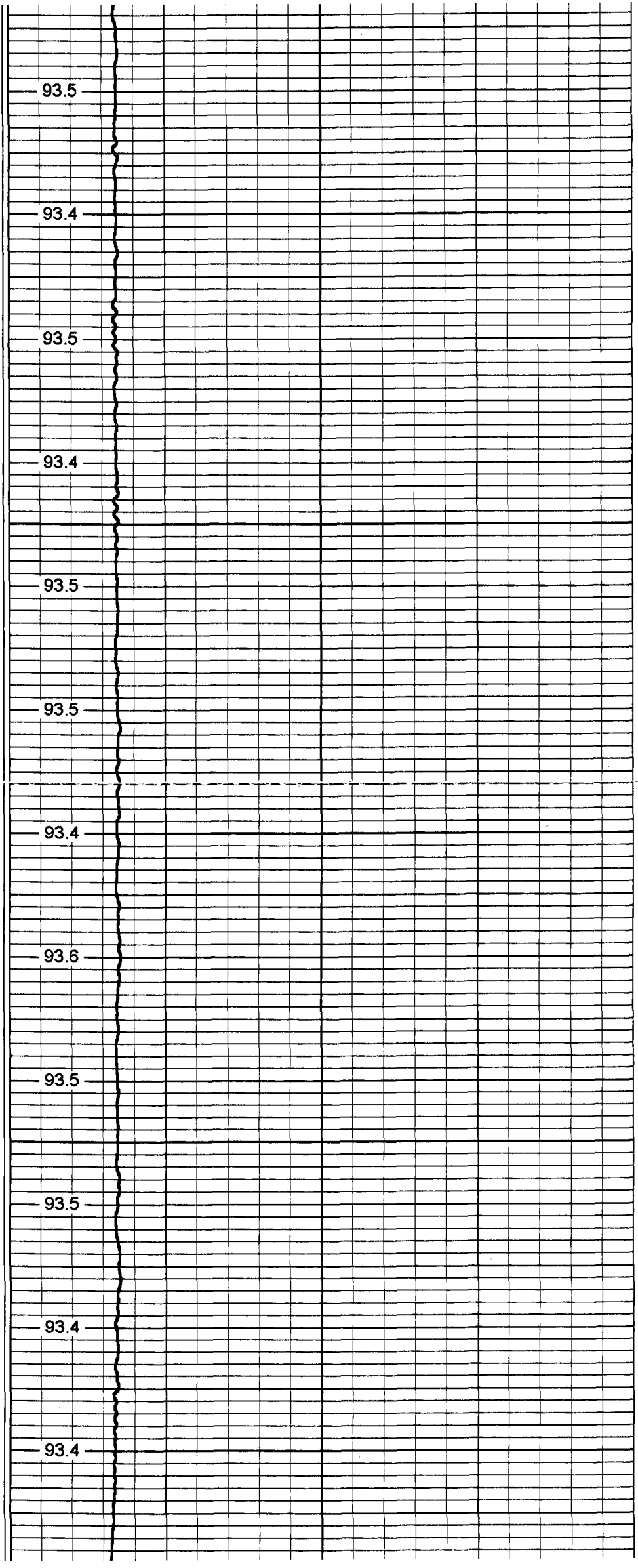
2300

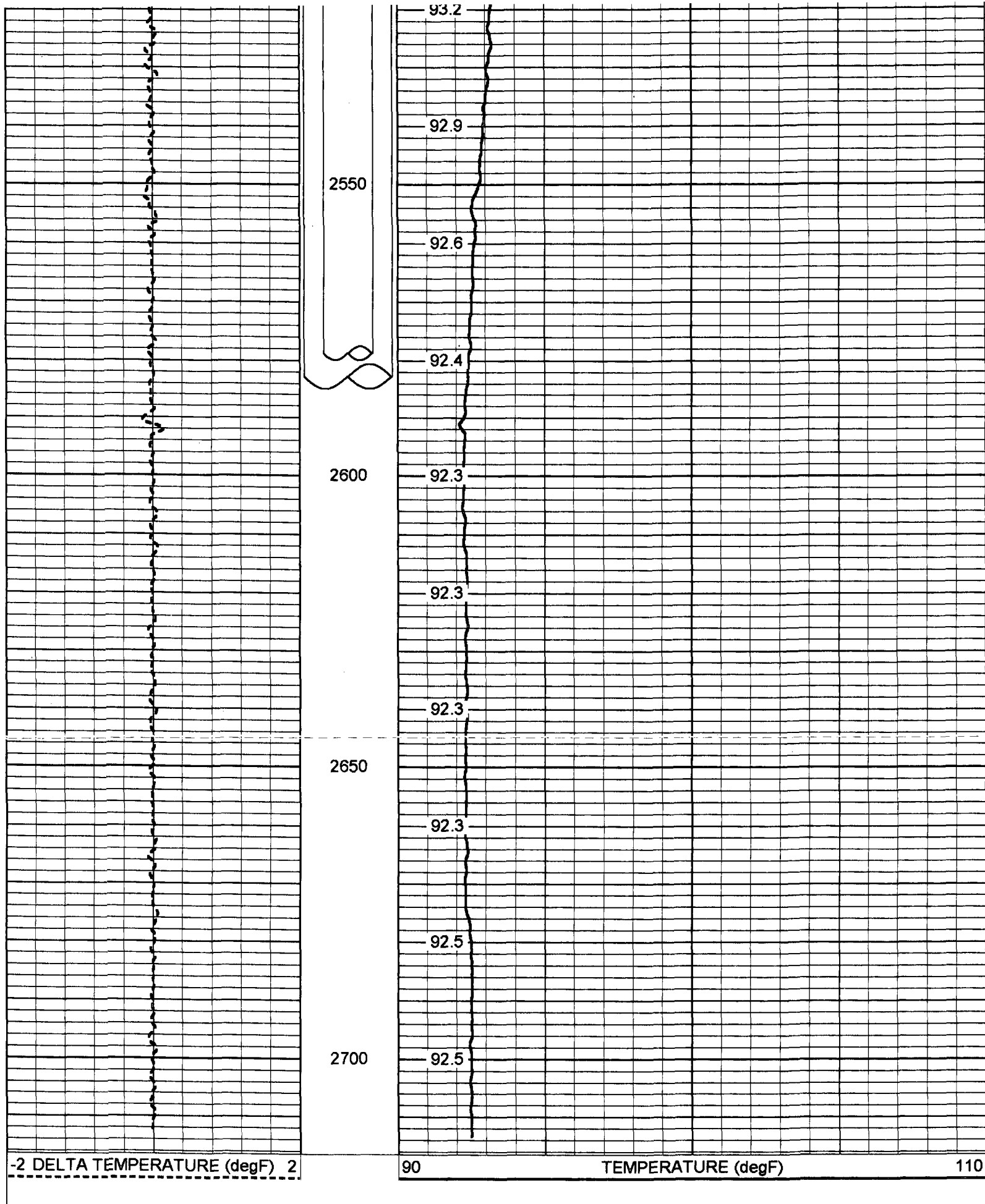
2350

2400

2450

2500





Temperature Calibration Report

Serial Number: 954  
 Tool Model: RTS  
 Performed: Tue Feb 27 11:24:16 2007

Point #	Reading		Reference	
1	338.01	cps	34	degF
2	789.32	cps	78	degF
3	1553.26	cps	152	degF

TEMP 0.10 ft

TEMP-RTS (954)  
70.00 lb 1.69 in OD 25.50 ft

total weight: 10.00 lb  
O.D. 1.69 in

