



**YOUNGQUIST
BROTHERS, Inc**

GEOPHYSICAL LOGGING DIVISION

**FLUID CONDUCTIVITY
TEMPERATURE
LOG**

RECEIVED

APR 30 2004

DEPT. OF STATE
FLORIDA

Company MWH
Well DZMW #1
Field NORTH LEE COUNTY
County LEE
State FLORIDA

Company MWH
Well DZMW #1
Field NORTH LEE COUNTY
County LEE

Location			
Permanent Datum	PAD	Elevation	3.75'
Log Measured From	PAD	K.B.	
Drilling Measured From	PAD	D.F.	
		G.L.	
Date	31-OCT-2003		

Run Number	ONE	Bit	34.5"	From	CASING	To	513'
	TWO		12.25"		CASING		1500'
	THREE		14.5"		CASING		1850'
	FOUR		9"		CASING		1900'
Casing Record		Size	34"	Wgt/Ft	3.75	Top	SURFACE
Surface String			24"		3.75 W.T.		SURFACE
Prot. String			16"		3.75	Bottom	10'
Production String							507'
Liner							1390'

<<< Fold Here >>>

All interpretations are opinions based on inferences from electrical or other measurements and we cannot and do not guarantee the accuracy or correctness of any interpretation, and we shall not, except in the case of gross or willful negligence on our part, be liable or responsible for any loss, costs, damages, or expenses incurred or sustained by anyone resulting from any interpretation made by any of our officers, agents or employees. These interpretations are also subject to our general terms and conditions set out in our current Price Schedule.

Comments

OTHER SERVICES:

 XY CALIPER - GAMMA RAY
 BOREHOLE COMPENSATED SONIC
 DUAL INDUCTION LL3/SP
 FLOWMETER

 DYNAMIC FLOWRATE = 200 GPM

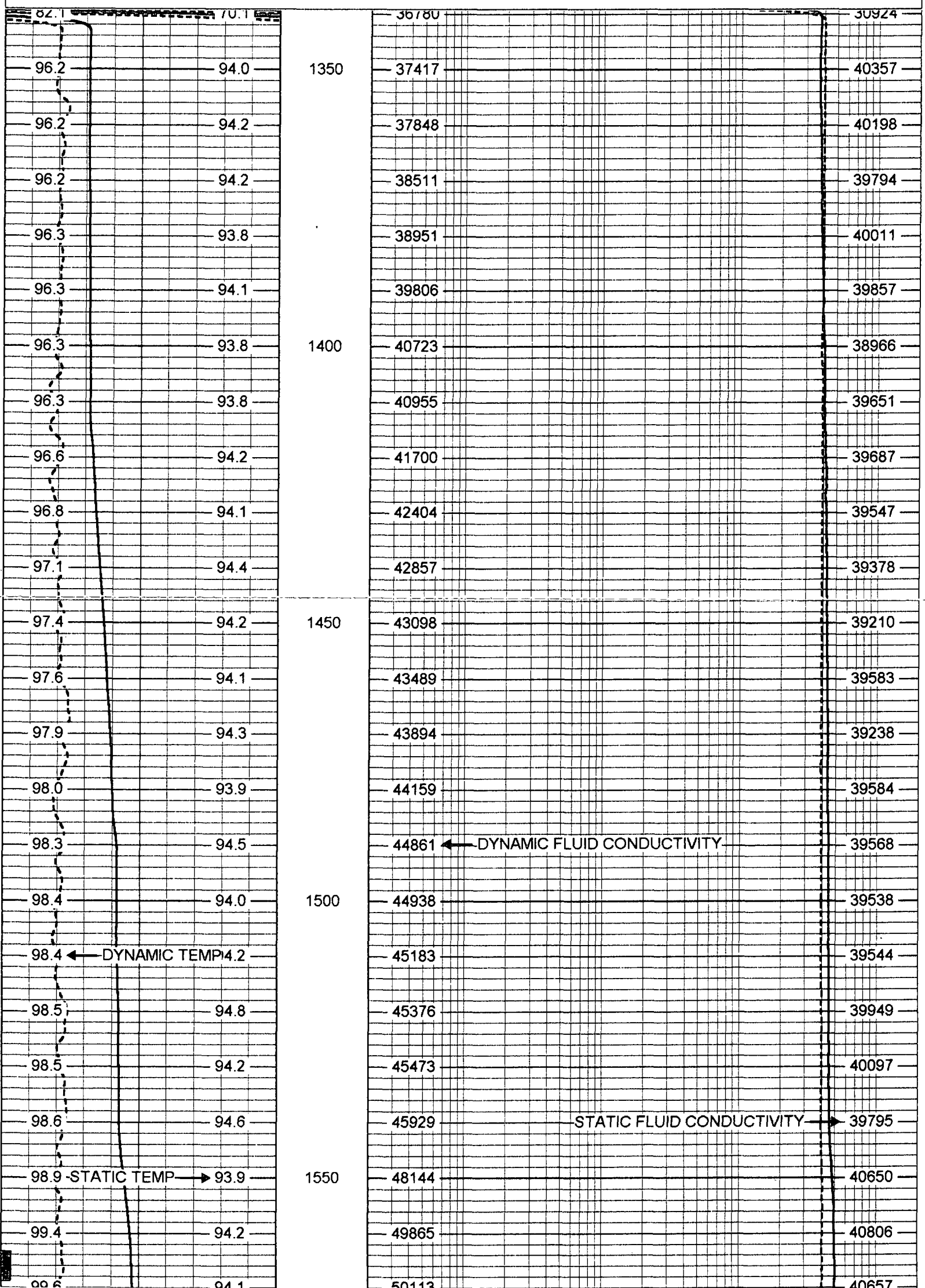


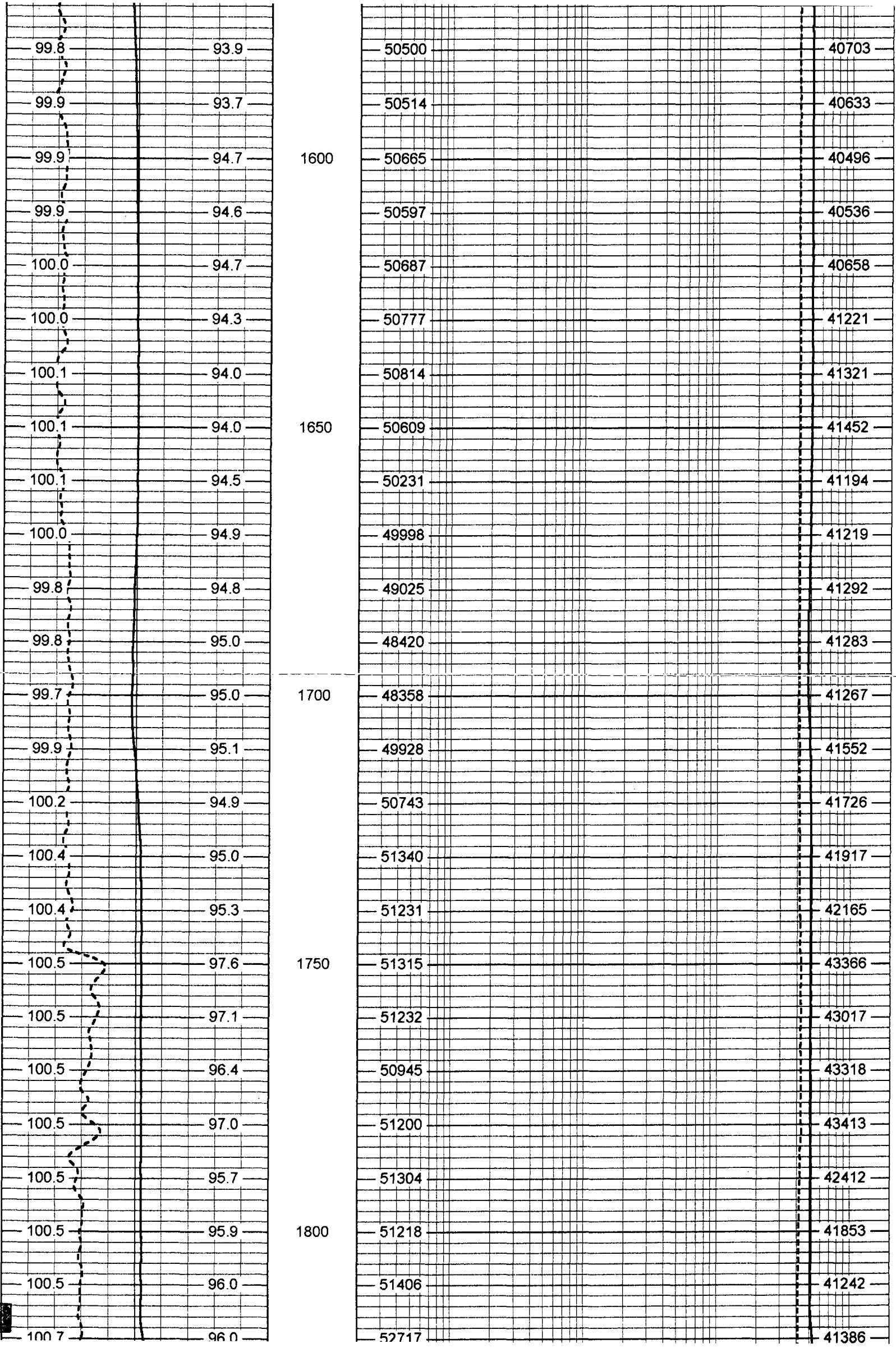
MERGED FCT

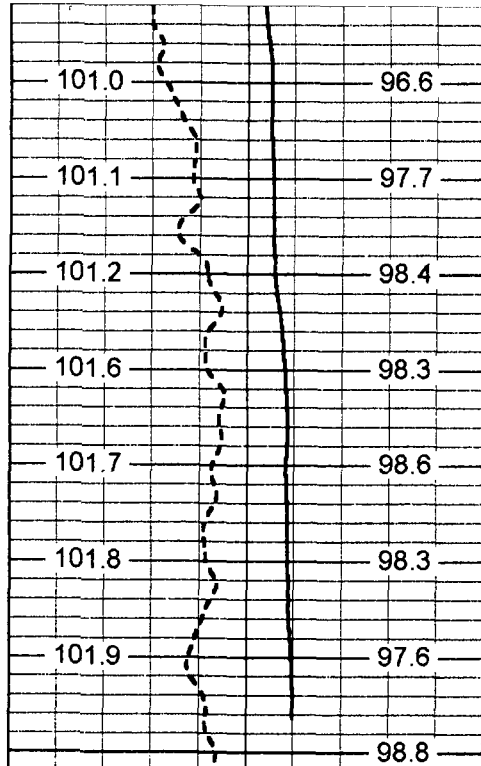
Database File: nleemw.db
 Dataset Pathname: run5/pass11
 Presentation Format: frt_mg
 Dataset Creation: Sat Nov 01 00:22:31 2003 by Log 6.2_B4

90 DYNAMIC TEMP (degF) 110
 90 STATIC TEMP (degF) 110

20 DYNAMIC FLUID CONDUCTIVITY (uS) 200000
 20 STATIC FLUID CONDUCTIVITY (uS) 200000



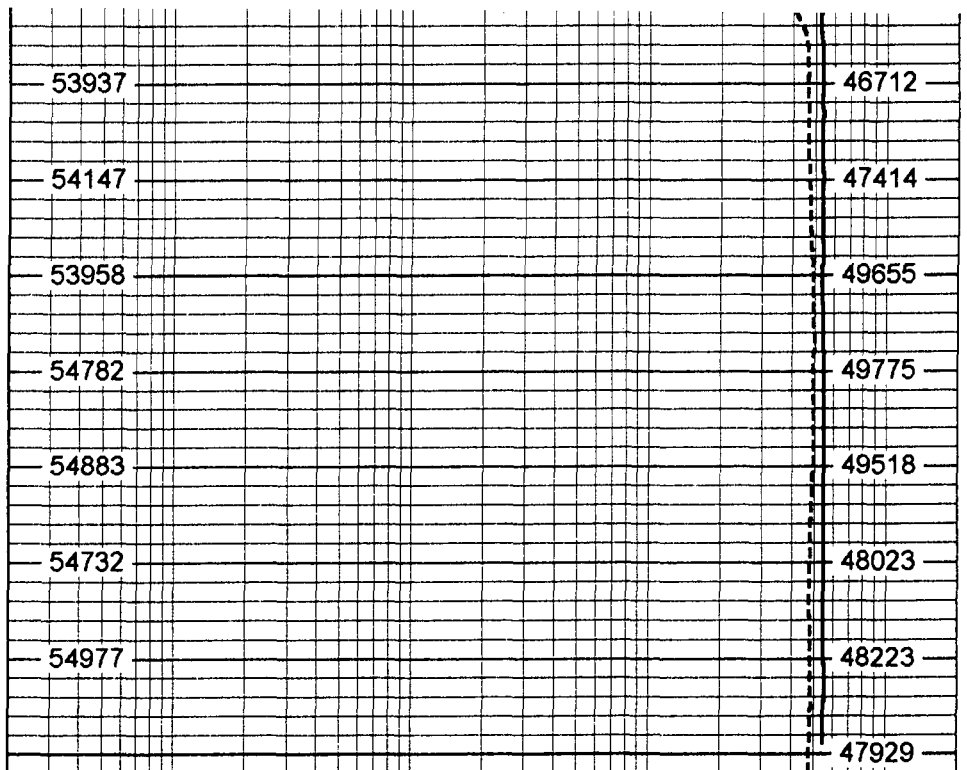




1850

1900

90	DYNAMIC TEMP (degF)	110
90	STATIC TEMP (degF)	110



20	DYNAMIC FLUID CONDUCTIVITY (uS)	200000
20	STATIC FLUID CONDUCTIVITY (uS)	200000

