



FLORIDA

GEOPHYSICAL LOGGING, INC.

HIGH RESOLUTION
TEMPERATURE
LOG

COMPANY MISSIMER INTERNATIONAL

WELL SCRWTP EM-4 MW-1

FIELD SOUTH COLLIER

COUNTY COLLIER

STATE FLORIDA

LOCATION

OTHER SERVICES:
XYCAL
DIL
BHC
FLOWMETER

SEC. _____ TWP _____ RGE _____

ELEV.: K.B. _____
D.F. _____
G.L. _____

FILE NO. _____

PERMANENT DATUM PAD LEVEL (P.L.) ELEV. _____

LOG MEASURED FROM PAD FT. ABOVE PERMANENT DATUM

DRILLING MEASURED FROM PAD TO _____

DATE 01-JUNE-1996

RUN NO. EIGHT

TYPE LOG HRT

DEPTH-DRILLER 1950'

DEPTH-LOGGER 1952'

LOGGED INTERVAL 1952' TO 800'

OPERATING RIG TIME 1 HOUR

TYPE FLUID IN HOLE WATER

SALINITY, PPM CL NA

DENSITY-VISCOSITY NA

LEVEL FULL

MAX. REC. TEMP, DEG F. N/A

EQUIPMENT-LOCATION 101 - MIAMI

RECORDED BY JONES/LEE

WITNESSED BY E. SHAWKEY

BOREHOLE RECORD

CASING RECORD

RUN NO.	BIT	FROM	TO	SIZE	MGT.	FROM	TO
ONE	36"	50'	SURFACE	34"	.5" MT.	50'	SURFACE
TWO	28"	350'	CASING	24"	.375 MT.	350'	SURFACE
THREE	18"	850'	CASING	16"	.375 MT.	850'	SURFACE
FOUR	12.25"	1950'	CASING				

ALL INTERPRETATIONS ARE OPINIONS BASED ON INFERENCES FROM ELECTRICAL OR OTHER MEASUREMENTS AND WE CANNOT AND DO NOT GUARANTEE THE ACCURACY OR CORRECTNESS OF ANY INTERPRETATION, AND WE SHALL NOT, EXCEPT IN THE CASE OF GROSS OR WILLFULL NEGLIGENCE ON OUR PART, BE LIABLE OR RESPONSIBLE FOR ANY LOSS, COSTS, DAMAGES, OR EXPENSES INCURRED OR SUSTAINED BY ANYONE RESULTING FROM ANY INTERPRETATION MADE BY ANY OF OUR OFFICERS, AGENTS OR EMPLOYEES. THESE INTERPRETATIONS ARE ALSO SUBJECT TO OUR GENERAL TERMS AND CONDITIONS SET OUT IN OUR CURRENT PRICE SCHEDULE.

REMARKS

XY CALIPER/GAMMA RAY/TEMPERATURE TOOL STRING CONFIGURATION

-- GAMMA RAY -- 3 FT. LONG
MEASURE POINT 7.5 FT. FROM BOT

-- TOTAL TOOL STRING LENGTH = 11.5 FT.--

-- XY CALIPER -- 6 FT. LONG

-- LONG ARM MEASURE POINT 4 FT. FROM BOT

-- TEMPERATURE -- 2.5 FT. LONG
MEASURE POINT AT BOT

-- BOT

REMARKS

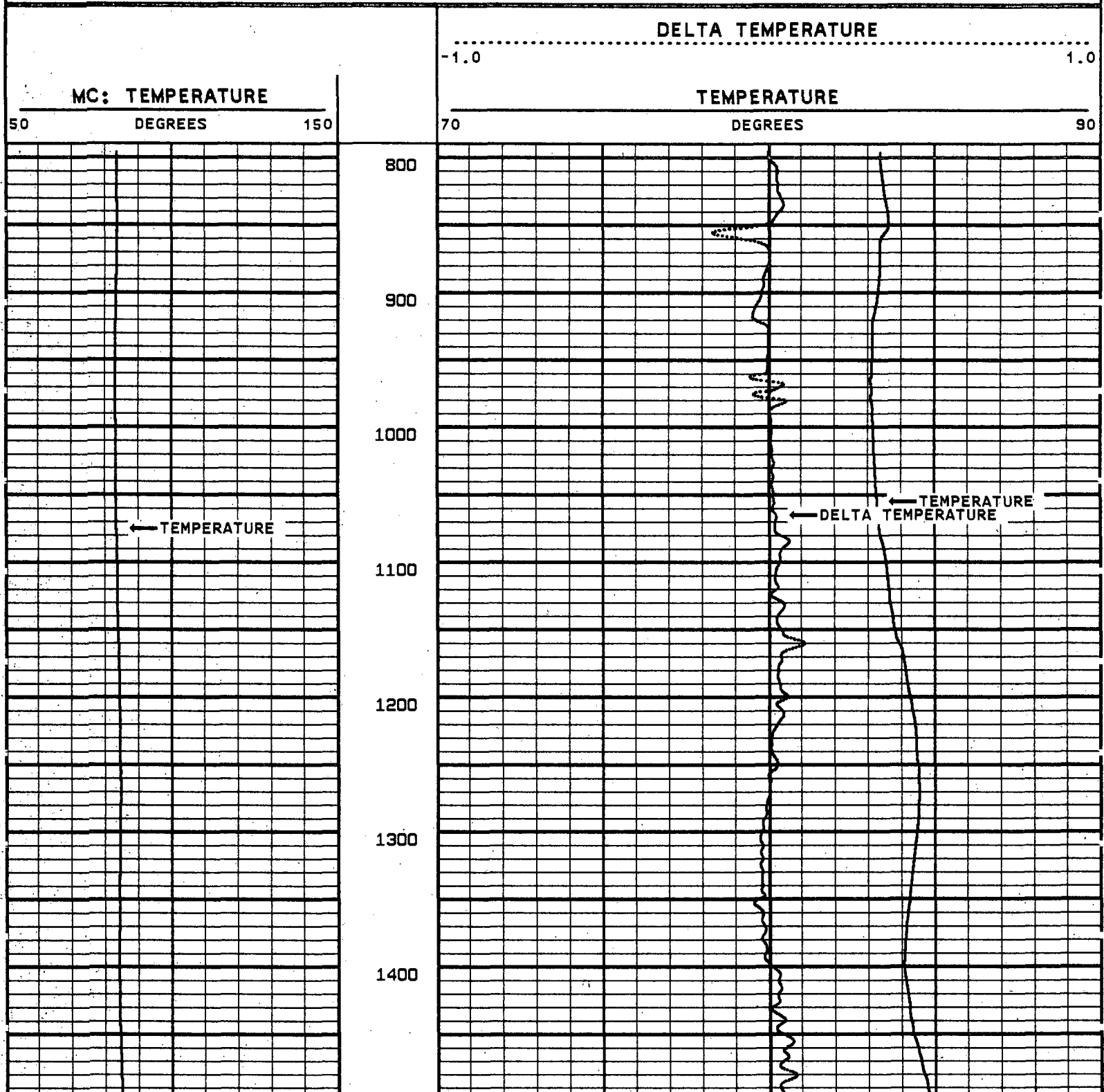
LOGGED GOING DOWNHOLE
DEPTH SCALE = 1"/100'

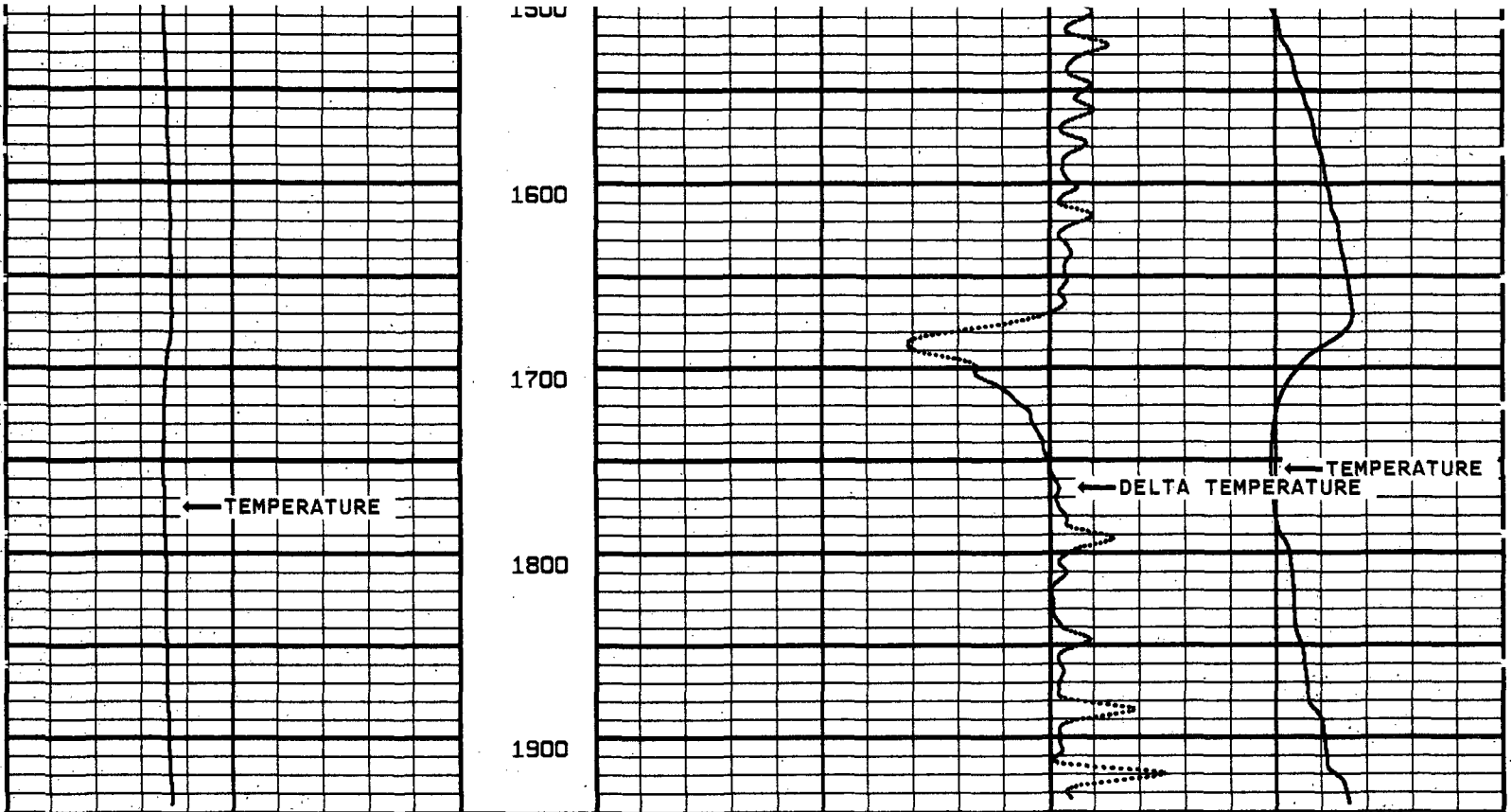
VERSION: 2.26

MAIN PASS

SCMW18TEMP

FINISH DEPTH: 1940.2 FEET DIRECTION: DOWN DATE: 06/01/96 TIME: 09:03:27 MODE: TRACE PLAYBACK





MC: TEMPERATURE
 50 DEGREES 150

TEMPERATURE
 70 DEGREES 90
 DELTA TEMPERATURE
 -1.0 1.0

START DEPTH: 800.5 FEET DIRECTION: DOWN DATE: 06/01/96 TIME: 08:46:01 MODE: TRACE PLAYBACK
 SCMW18TEMP

MAIN PASS
 VERSION: 2.26

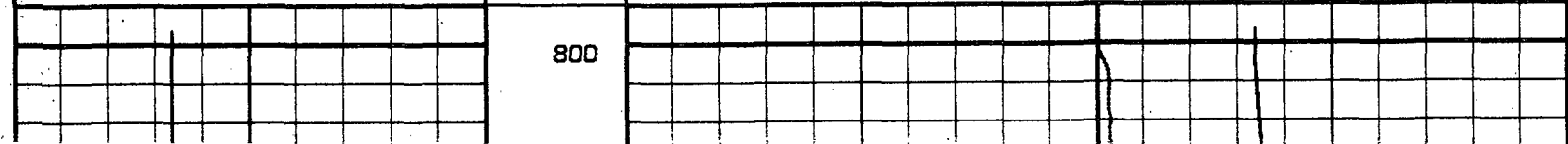
REMARKS
 LOGGED GOING DOWNHOLE
 DEPTH SCALE = 2"/100'

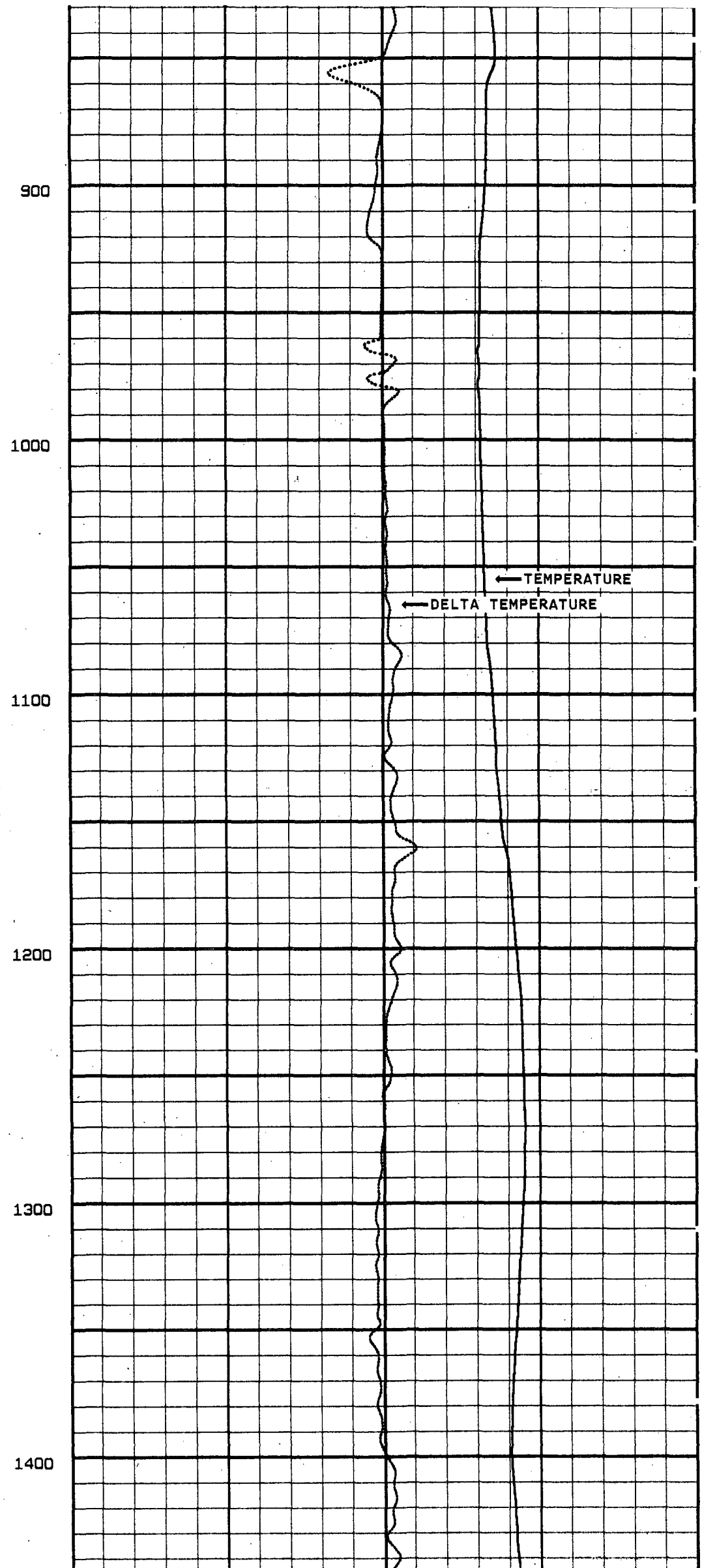
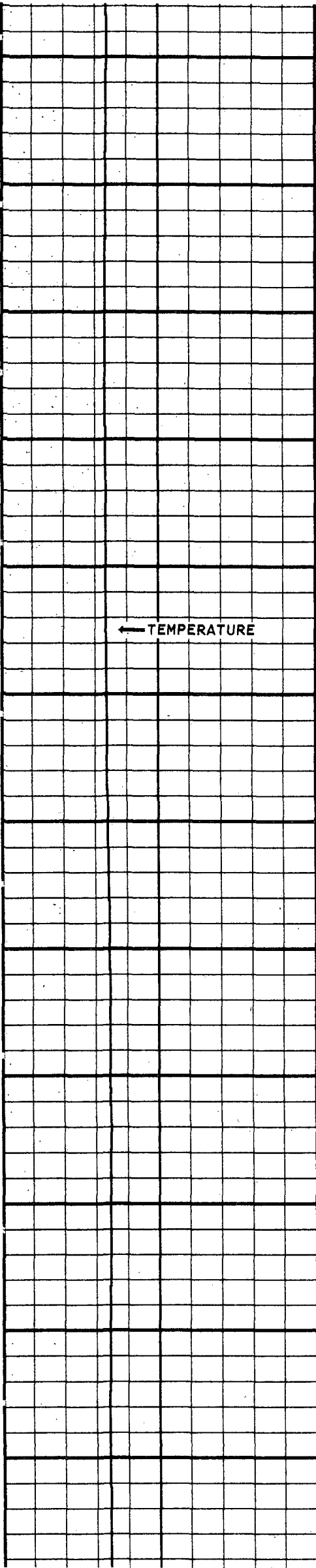
VERSION: 2.26
 MAIN PASS

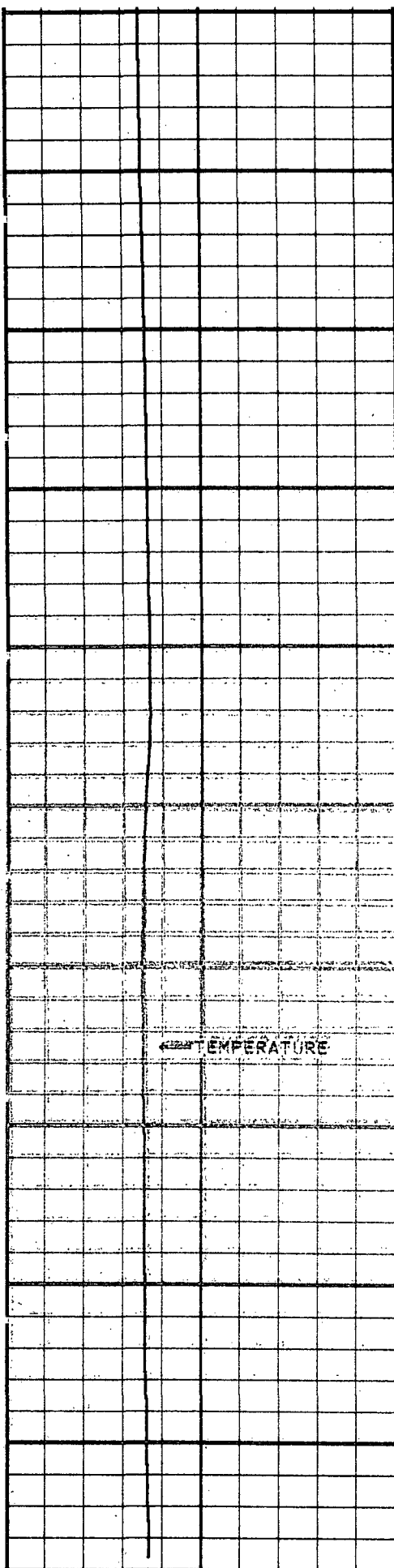
SCMW18TEMP
 FINISH DEPTH: 1940.2 FEET DIRECTION: DOWN DATE: 06/01/96 TIME: 09:03:27 MODE: TRACE PLAYBACK

MC: TEMPERATURE
 50 DEGREES 150

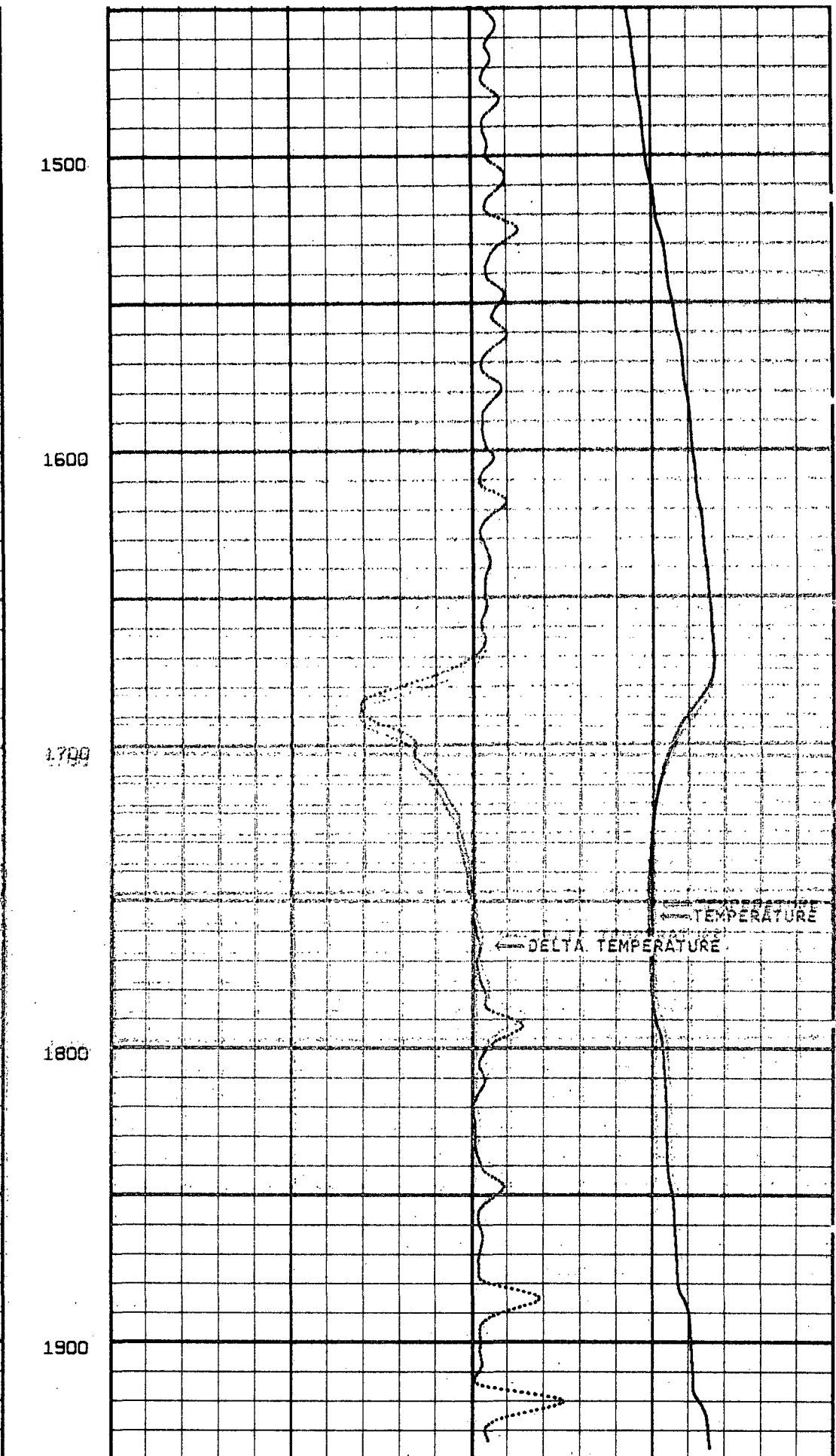
DELTA TEMPERATURE
 -1.0 1.0
 TEMPERATURE
 70 DEGREES 90







MC: TEMPERATURE
 50 DEGREES 150



TEMPERATURE
 70 DEGREES 90
 DELTA TEMPERATURE
 -1.0 1.0

START DEPTH: 800.5 FEET DIRECTION: DOWN DATE: 06/01/96 TIME: 08:46:01 MODE: TRACE PLAYBACK
 SCMW18TEMP

MAIN PASS

REMARKS

LOGGED GOING DOWNHOLE

VERSION: 2.26

REPEAT SECTION

SCMW18TEMR

FINISH DEPTH: 1956.7 FEET DIRECTION: DOWN DATE: 06/01/96 TIME: 09:08:43 MODE: TRACE PLAYBACK

DELTA TEMPERATURE

-1.0

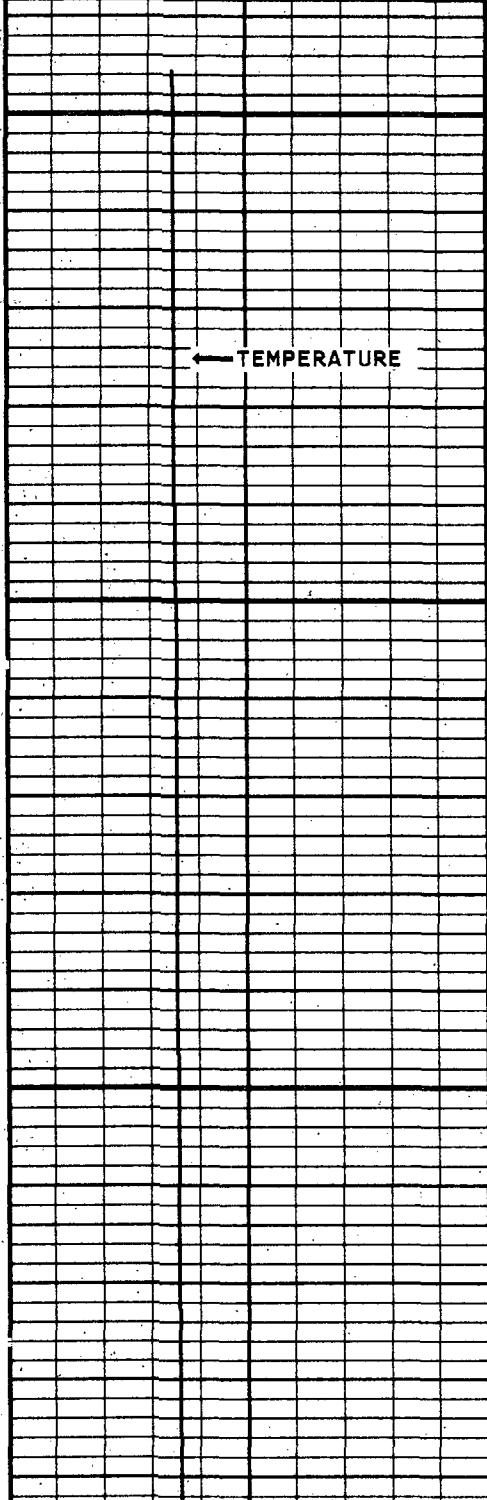
1.0

MC: TEMPERATURE

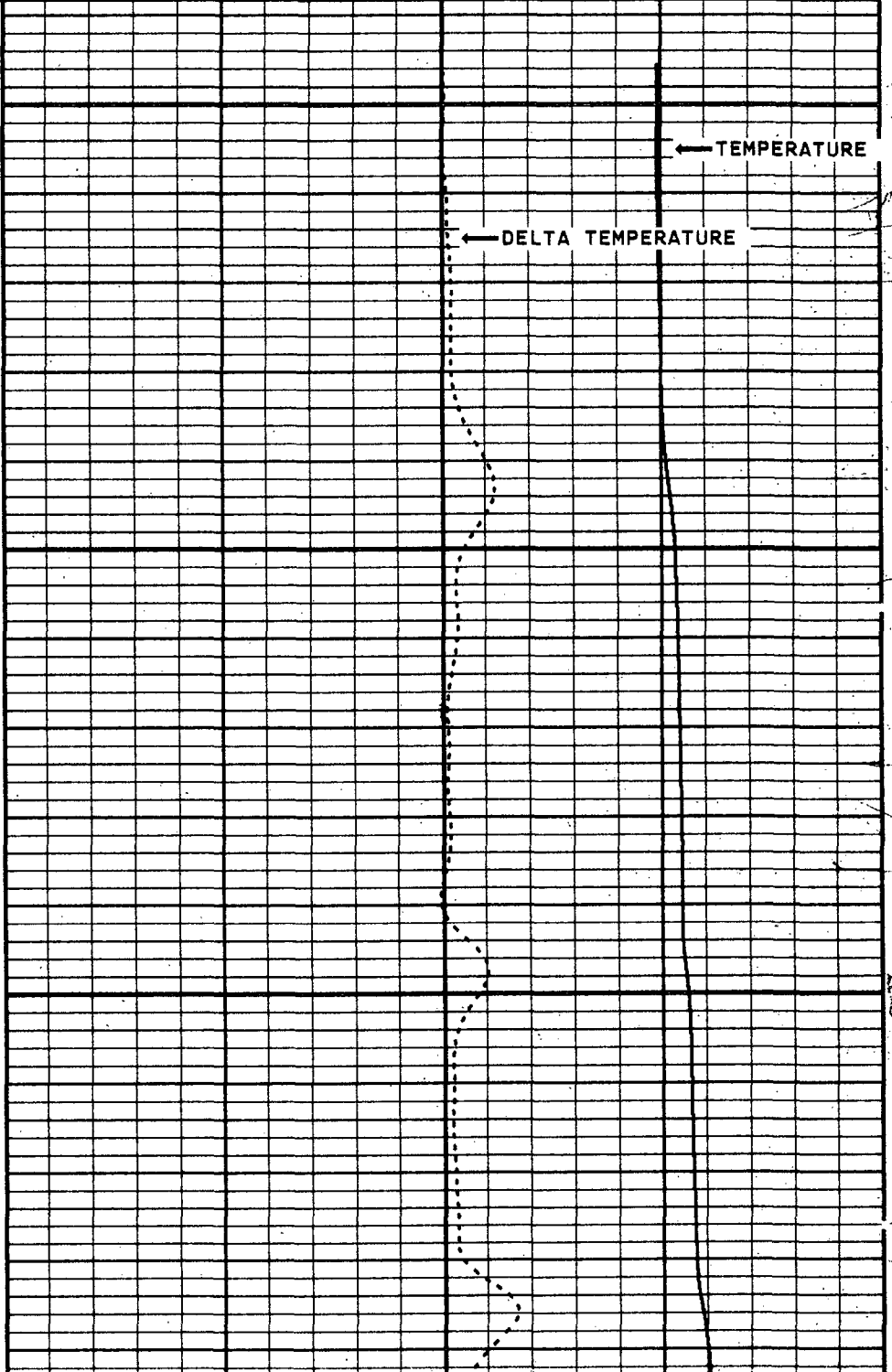
50 DEGREES 150

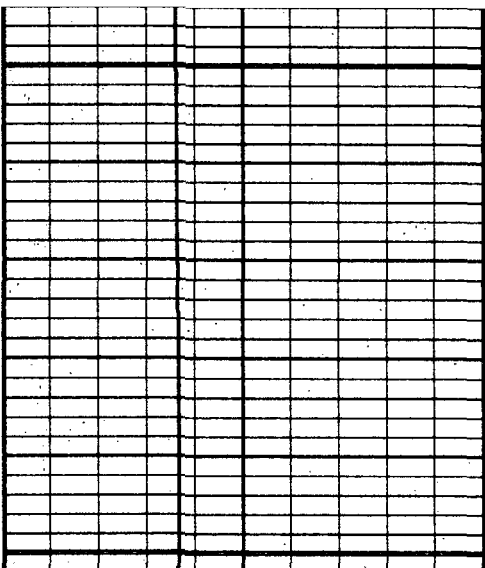
TEMPERATURE

70 DEGREES 90

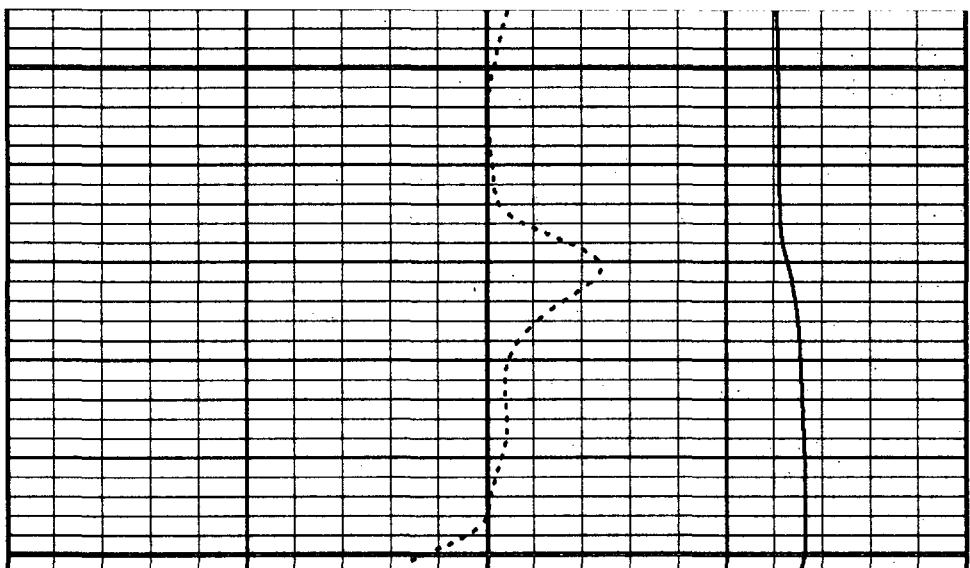


1800





1900



MC: TEMPERATURE
50 DEGREES 150

TEMPERATURE
70 DEGREES 90
DELTA TEMPERATURE
-1.0 1.0

START DEPTH: 1749.0 FEET DIRECTION: DOWN DATE: 06/01/96 TIME: 09:05:18 MODE: TRACE PLAYBACK
SCMW18TEMR

REPEAT SECTION
VERSION: 2.26

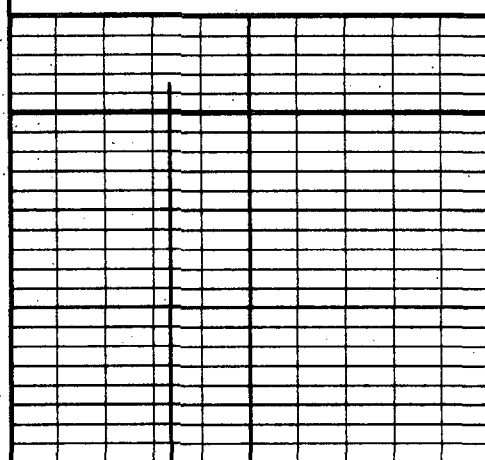
REMARKS
LOGGED GOING DOWNHOLE

VERSION: 2.26
MAIN PASS

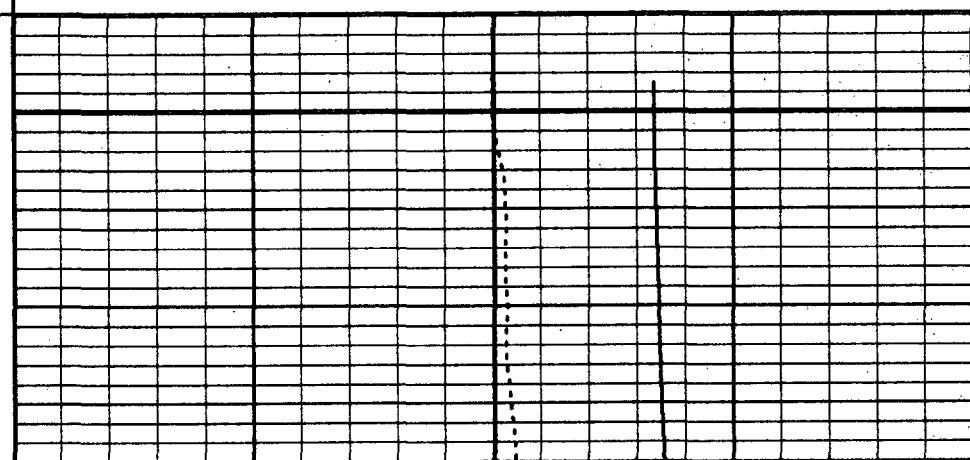
SCMW18TEMP
FINISH DEPTH: 1940.2 FEET DIRECTION: DOWN DATE: 06/01/96 TIME: 09:03:27 MODE: TRACE PLAYBACK

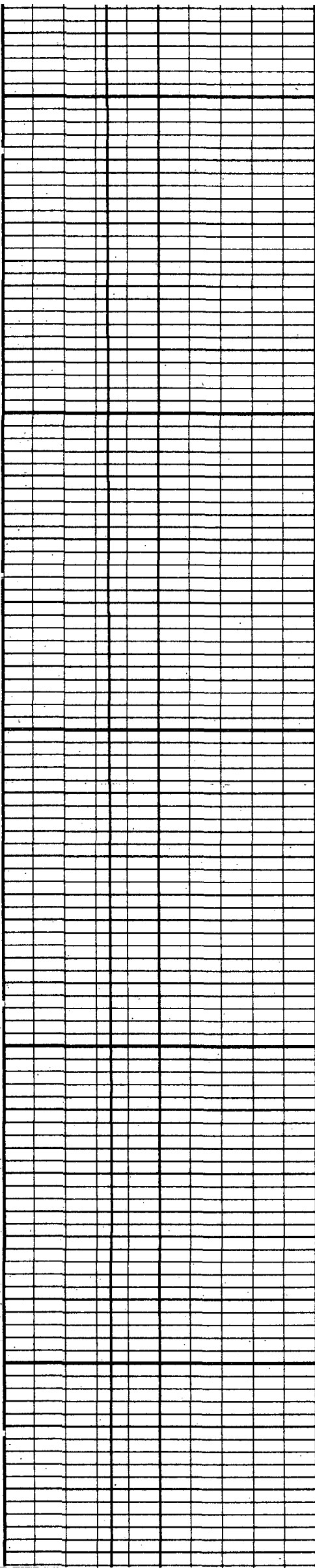
MC: TEMPERATURE
50 DEGREES 150

DELTA TEMPERATURE
-1.0 1.0
TEMPERATURE
70 DEGREES 90



800

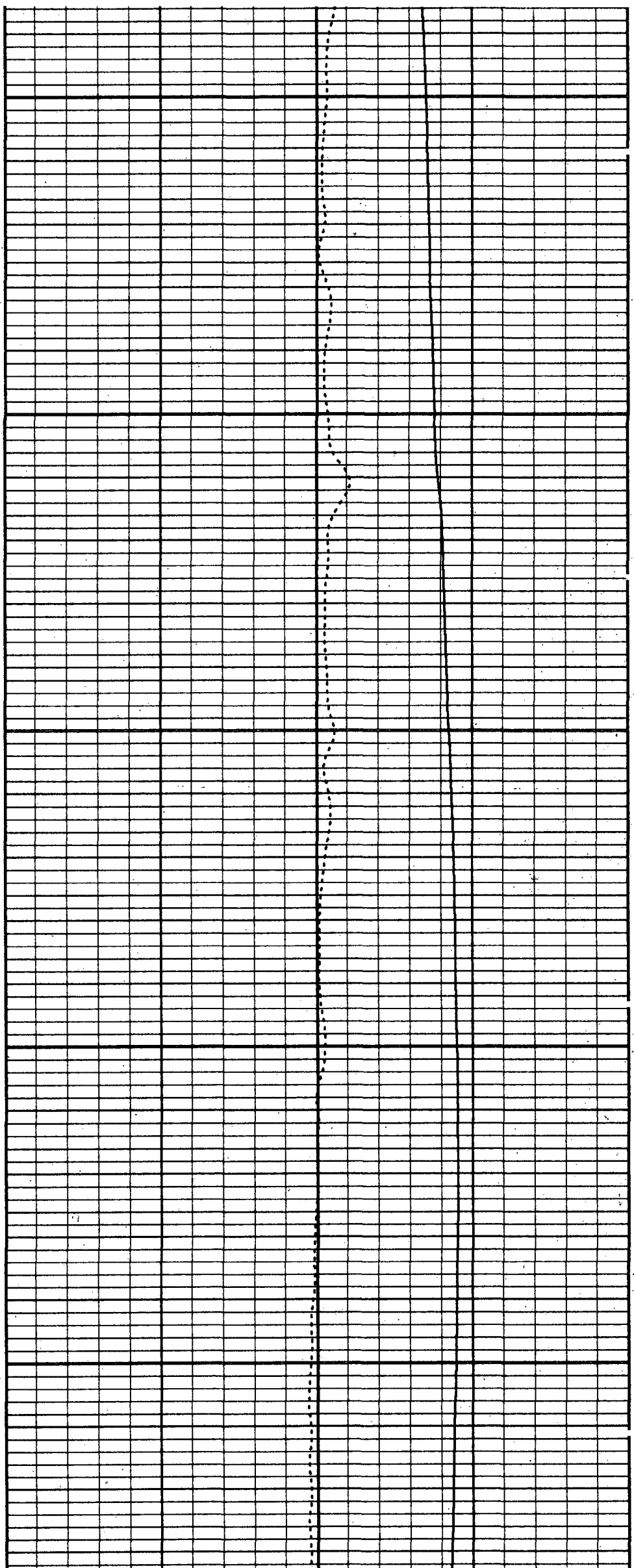


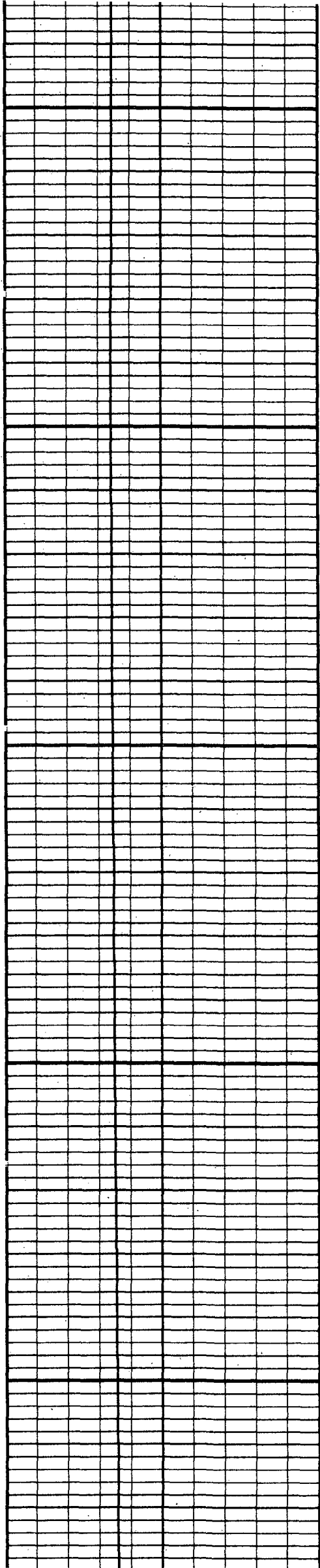


1100

1200

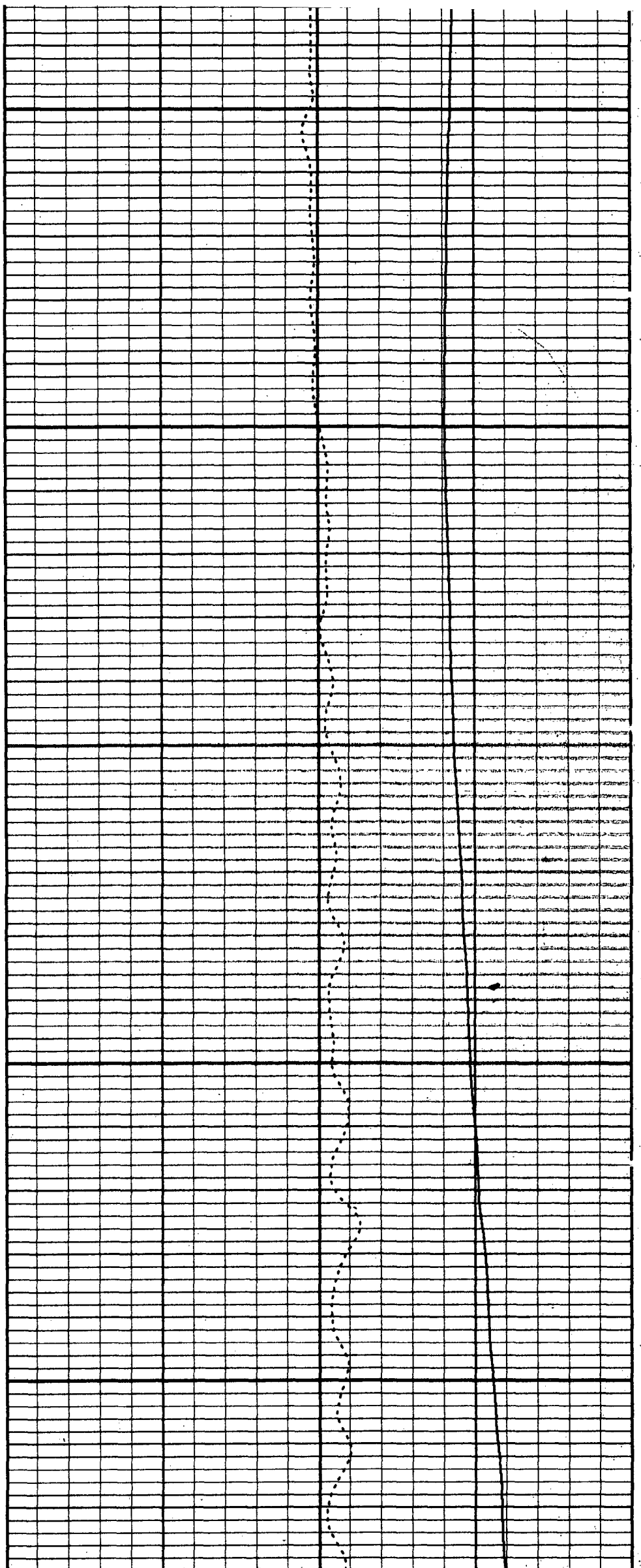
1300

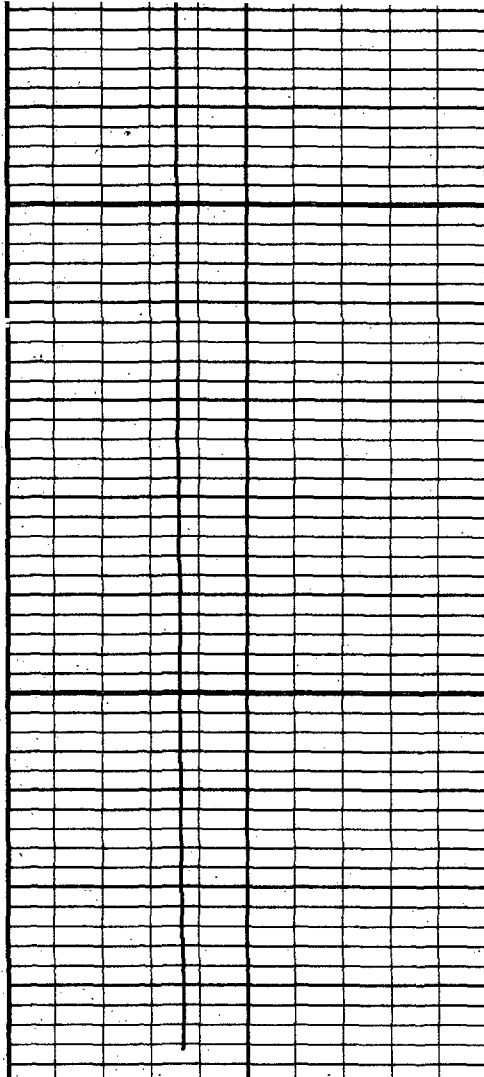




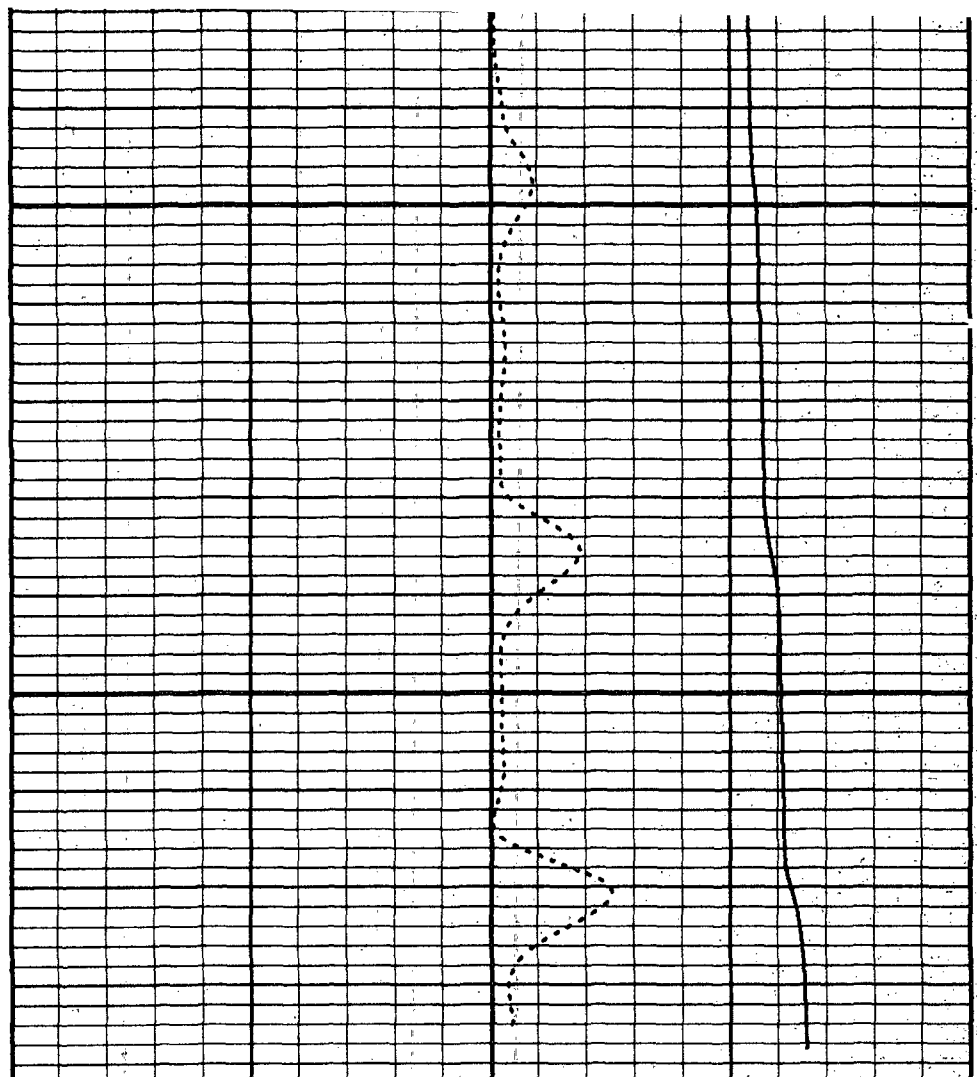
1400

1500





1900



MC: TEMPERATURE
50 DEGREES 150

TEMPERATURE
70 DEGREES 90
DELTA TEMPERATURE
-1.0 1.0

START DEPTH: 800.5 FEET DIRECTION: DOWN DATE: 06/01/96 TIME: 08:46:01 MODE: TRACE PLAYBACK
SCMW18TEMP

MAIN PASS
VERSION: 2.26

MASTER CALIBRATION SUMMARY

FILE: DATE: 06/01/96 TIME: 09:39 VERSION: 2.26

TEMPERATURE TOOL #30

DATE: 03/10/96 TIME: 15:29

	MEASURED	UNITS	STANDARD	MINIMUM	MAXIMUM	DEVIATION	UNITS
ZERO	288.3	CPS	69.6	69.3	69.8	0.14	DEGF
PLUS	456.9	CPS	103.6	102.9	104.5	0.29	DEGF

COMPANY

WELL

SCRWTP MW-1

FIELD

SOUTH COLLIER

STATE

FLORIDA

