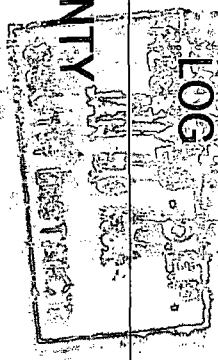




YOUNGQUIST BROTHERS, Inc
GEOPHYSICAL LOGGING DIVISION

HIGH RESOLUTION TEMPERATURE LOG



Company COLLIER COUNTY
Well IW-2
Field SCWRF
County COLLIER
State FLORIDA

Company COLLIER COUNTY
Well IW-2
Field SCWRF
County COLLIER
State FLORIDA

Location	Permanent Datum	Elevation	Other Services
	PAD		RTS VIDEO
			K.B. D.F. G.L.

Date	Run Number	Depth Driller	Depth Logger	Bottom Logged Interval	Top Log Interval	Open Hole Size	Type Fluid	Density / Viscosity	Max. Recorded Temp.	Estimated Cement Top	Time Well Ready	Time Logger on Bottom	Equipment Number	Location	Recorded By	Witnessed By
10-DEC-2008	2008 MIT	3200'	2834'	2834'	SURFACE	22"	WATER	NA	90.3F	NA	0730	0830	103	FT. MYERS	CATHEY	K. PROBST

Borehole Record				Borehole Record			
Run Number	Bit	From	To	Run No.	Bit	From	To

Casing Record		Size		Wgt/ft		Top		Bottom	
Surface String	Prot. String								
		24"		500' W.T.		SURFACE		2594'	

<<< Fold Here >>>

All interpretations are opinions based on inferences from electrical or other measurements and we cannot and do not guarantee the accuracy or correctness of any interpretation, and we shall not, except in the case of gross or willful negligence on our part, be liable or responsible for any loss, costs, damages, or expenses incurred or sustained by anyone resulting from any interpretation made by any of our officers, agents or employees. These interpretations are also subject to our general terms and conditions set out in our current Price Schedule.

Comments

Entered into
OCULUS
South District

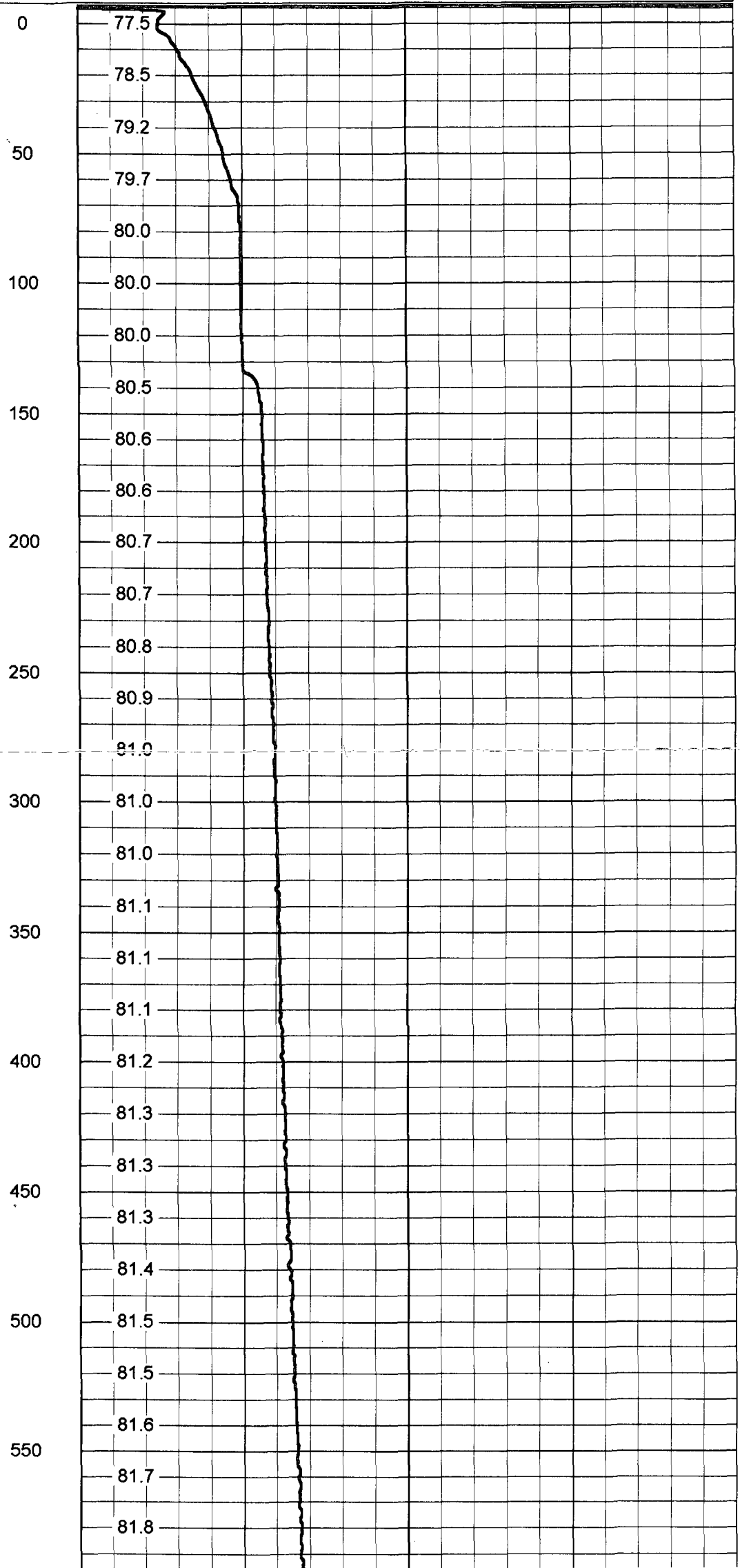
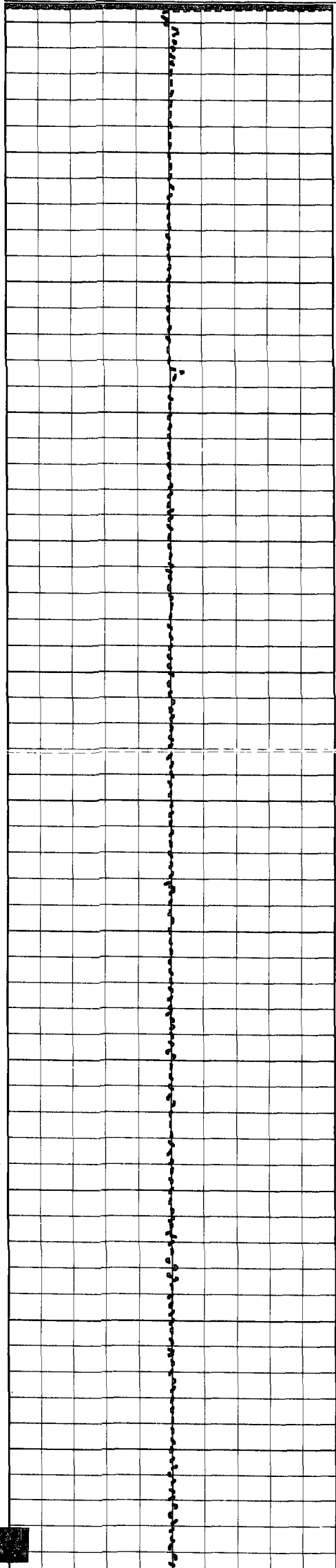
Entered into
OCULUS
South District

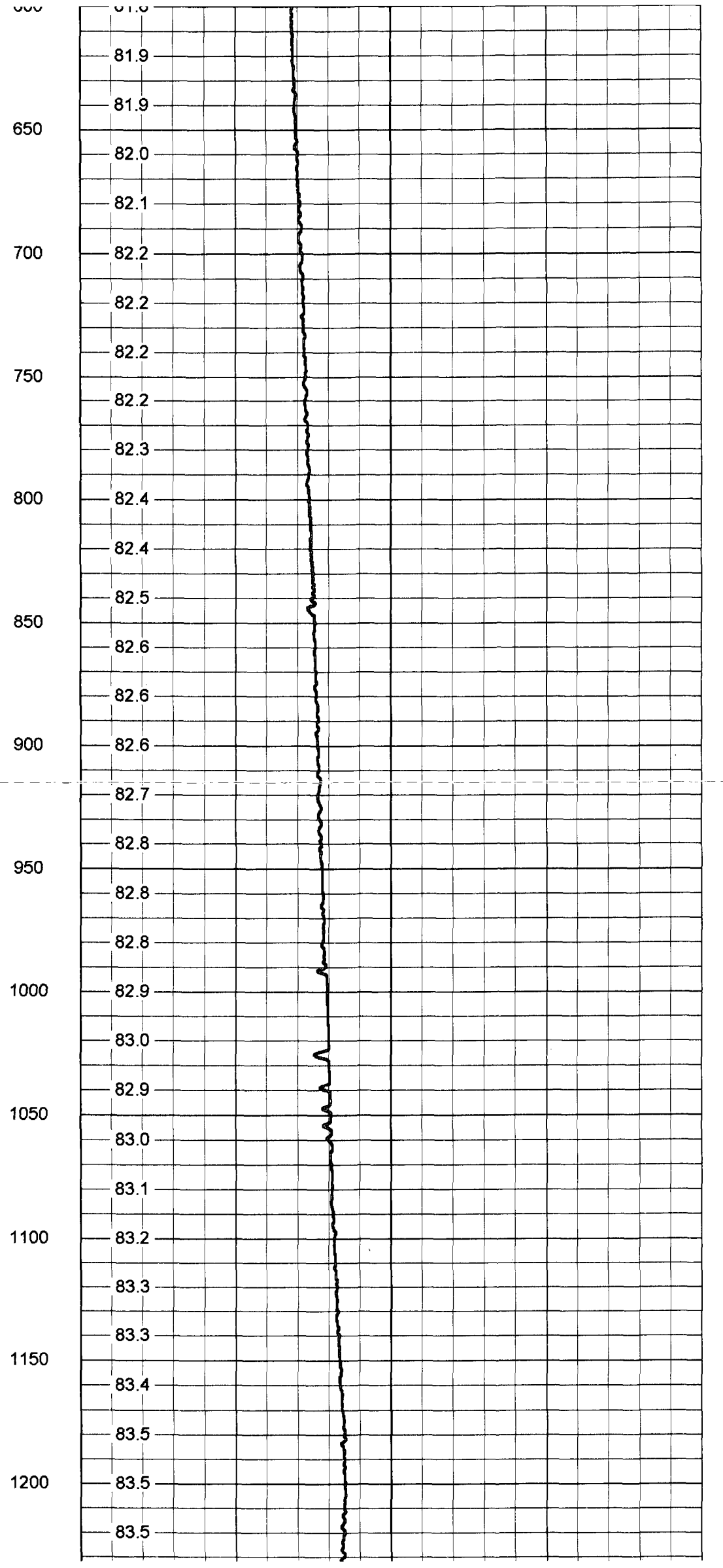
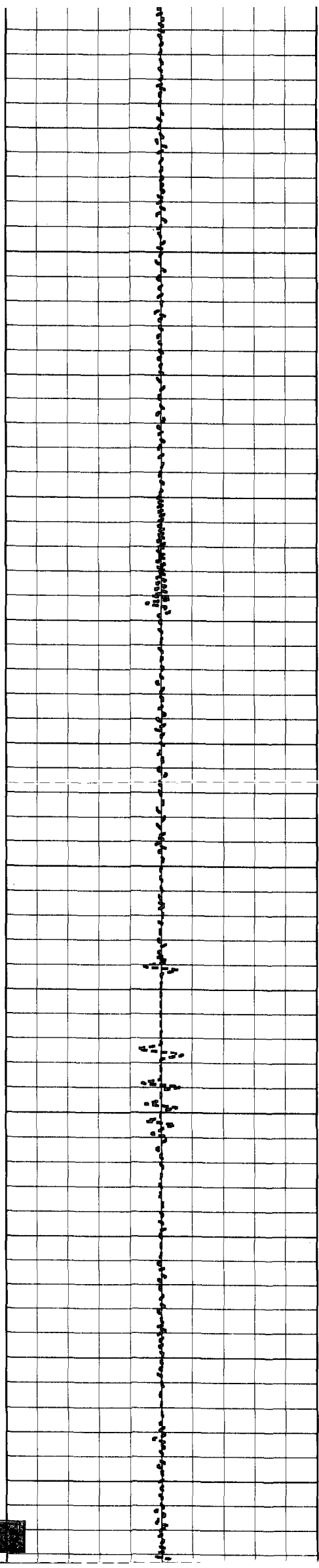


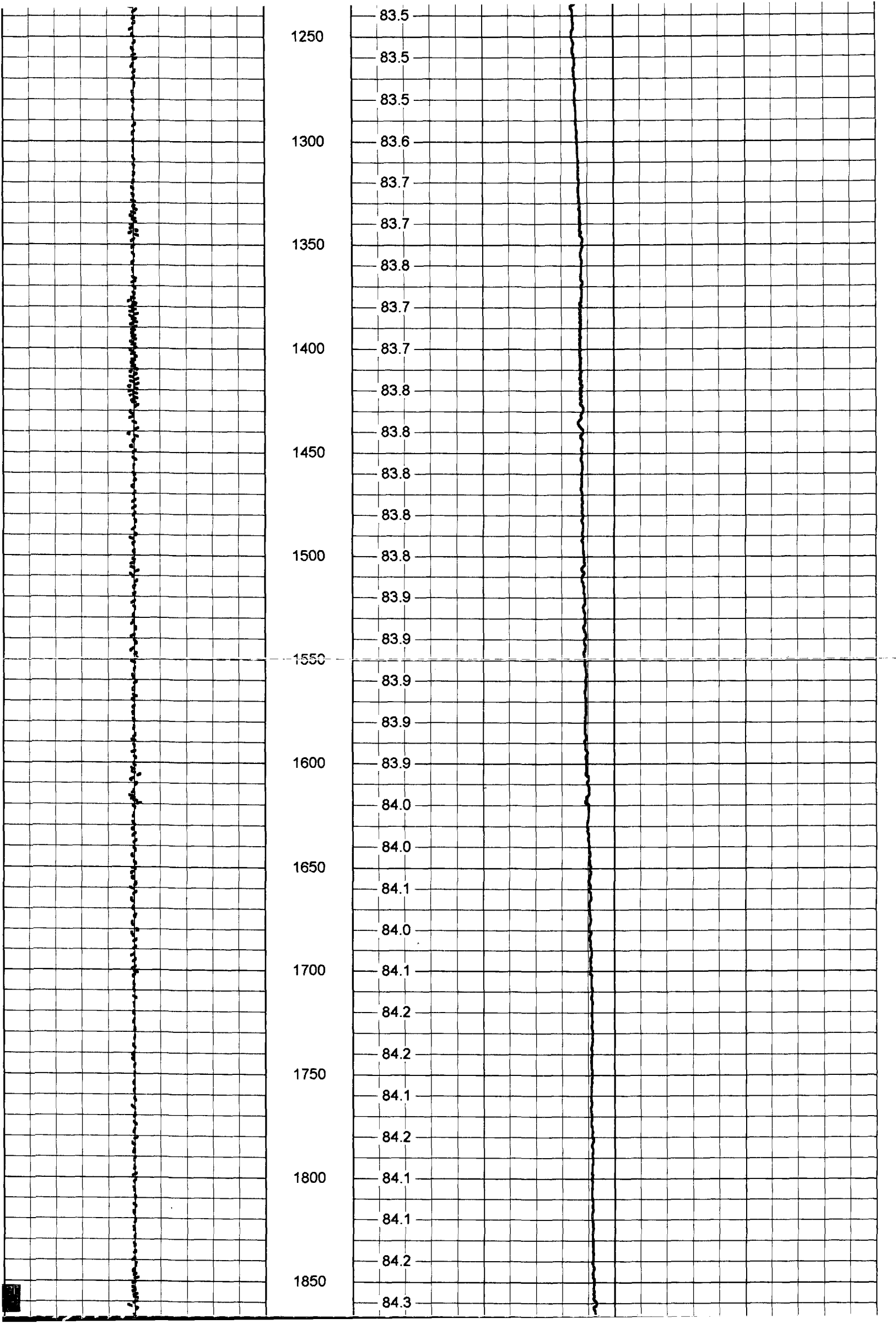
TEMPERATURE

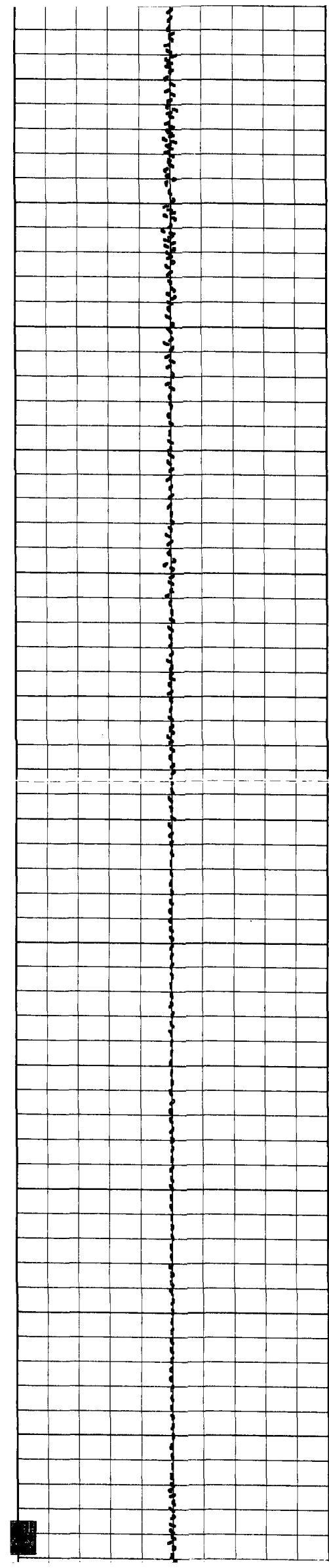
Database File: scwrfiw2.db
Dataset Pathname: mit/TEMP
Presentation Format: temp
Dataset Creation: Wed Dec 10 07:42:33 2008 by Log 6.2_B4
Charted by: Depth in Feet scaled 1:600

Entered into
OCULUS
South District

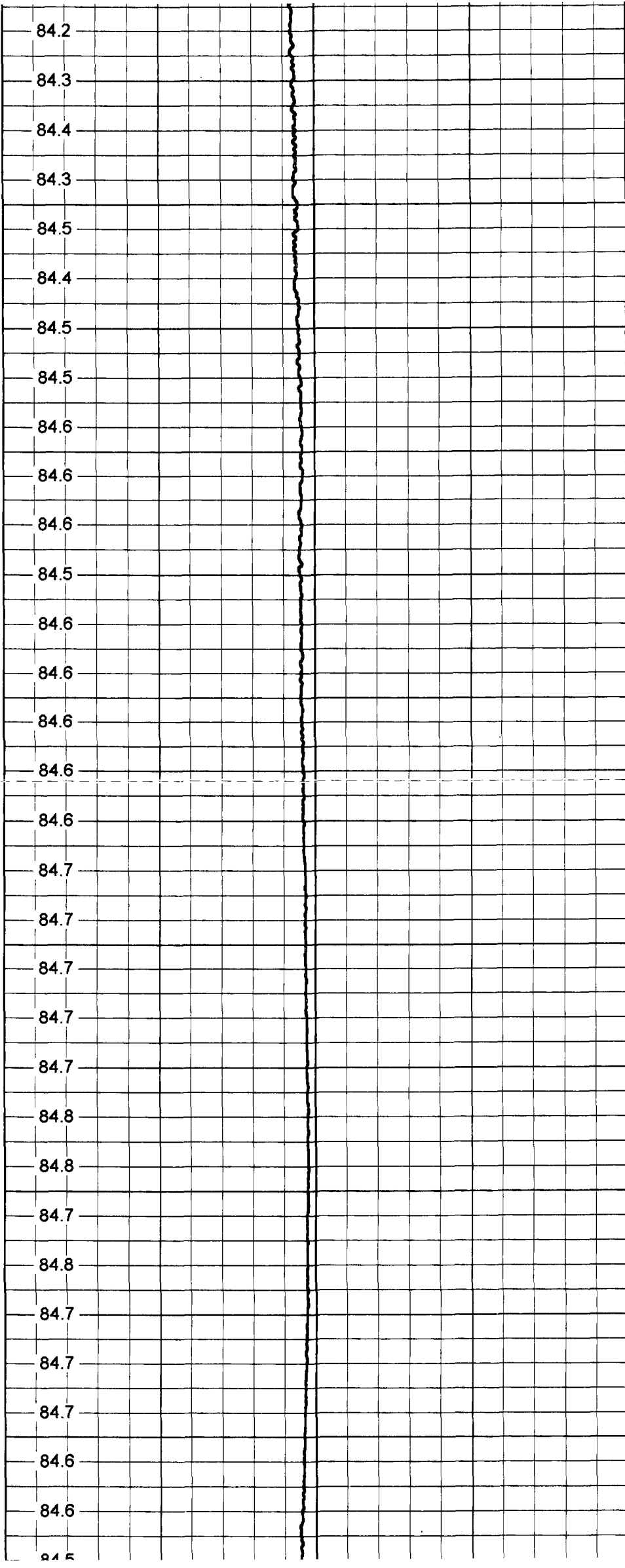


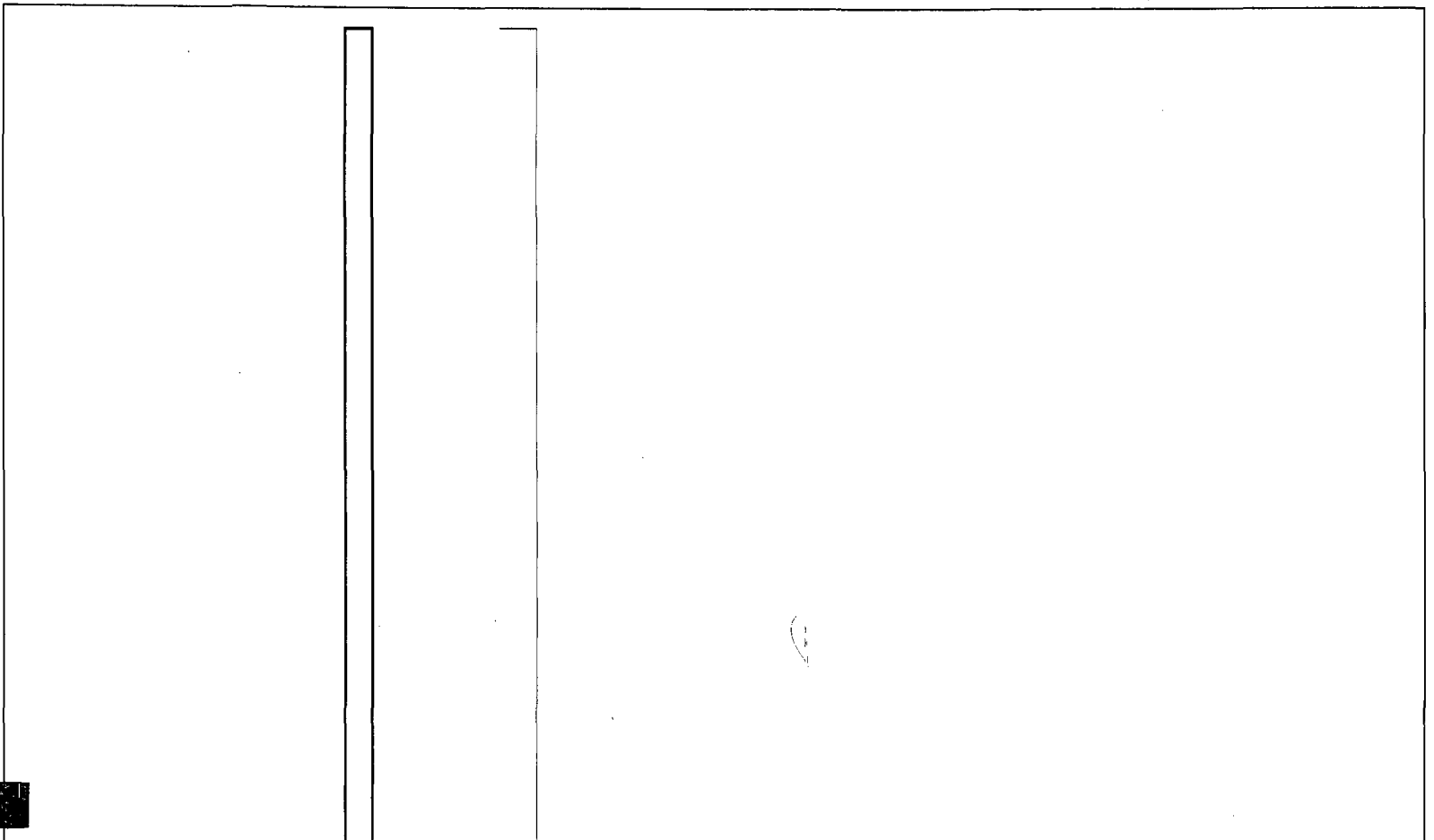
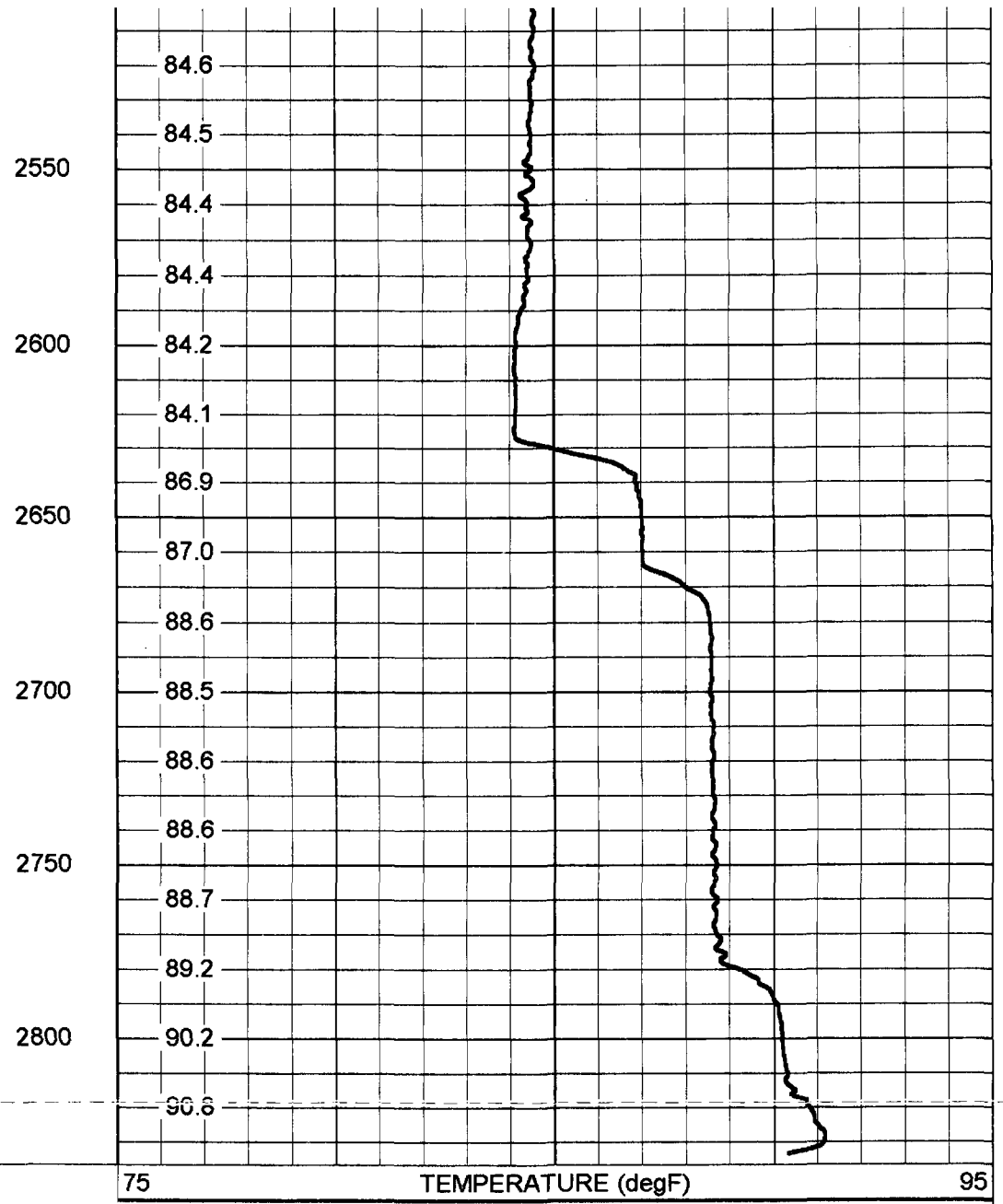
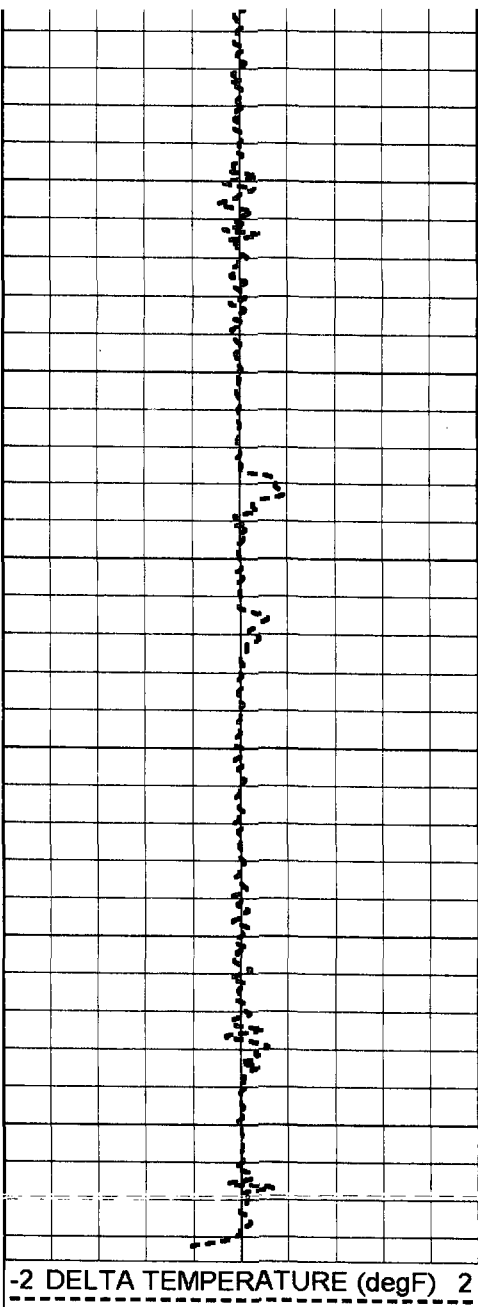






1900
1950
2000
2050
2100
2150
2200
2250
2300
2350
2400
2450
2500





TEMP-RTS (954)
70.00 lb 1.69 in OD 25.50 ft

TEMP 0.10 ft

Dataset: mit/TEMP
Total Length: 25.50 ft
Total Weight: 70.00 lb
O.D.: 1.69 in

Temperature Calibration Report

Serial Number: 954
Tool Model: RTS
Performed: Tue Feb 27 11:24:16 2007

Point #	Reading		Reference	
1	338.01	cps	34	degF
2	789.32	cps	78	degF
3	1553.26	cps	152	degF