



FLORIDA
GEOPHYSICAL LOGGING, INC.

**HIGH RESOLUTION
TEMPERATURE
SURVEY**

Company CDM MISSIMER
Well SCRWWTP IW-1
Field SOUTH COLLIER
County COLLIER
State FLORIDA

Company CDM MISSIMER
Well SCRWWTP IW-1
Field SOUTH COLLIER
County COLLIER
State FLORIDA

Location	Permanent Datum	Elevation	Other Services
	Log Measured From		
Drilling Measured From		Elevation	K.B.
			D.F.
			GL.

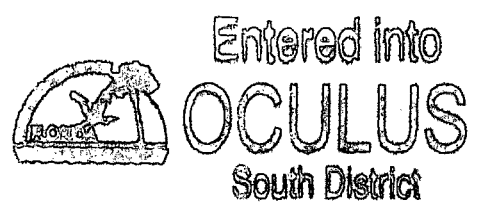
Date	23-MAY-2001		
Run Number	MIT 01'		
Depth Driller	3216'		
Depth Logger	3200'		
Bottom Logged Interval	3200'		
Top Log Interval	SURFACE		
Open Hole Size	22.5"		
Type Fluid	WATER		
Density / Viscosity	N/A		
Max. Recorded Temp.	101 DEG F		
Estimated Cement Top	N/A		
Time Well Ready	ON ARRIVAL		
Time Logger on Bottom	1700		
Equipment Number	103		
Location	FT MYERS		
Recorded By	DENISON		
Witnessed By	R. STROSS		

Run Number	Borehole Record		Tubing Record	
	Bit	From	To	Weight
Casing Record				
Surface String				
Prot. String				
Production String				
Liner				

<<< Fold Here >>>

All interpretations are opinions based on inferences from electrical or other measurements and we cannot and do not guarantee the accuracy or correctness of any interpretation, and we shall not, except in the case of gross or willful negligence on our part, be liable or responsible for any loss, costs, damages, or expenses incurred or sustained by anyone resulting from any interpretation made by any of our officers, agents or employees. These interpretations are also subject to our general terms and conditions set out in our current Price Schedule.

Comments



Empty rectangular box for additional notes or signatures.

TEMP-RTS (952) 70.00 lb 1.69 in OD 25.50 ft

TEMP 0.10 ft

Dataset: run1/pass1
Total Length: 25.50 ft
Total Weight: 70.00 lb
O.D. 1.69 in

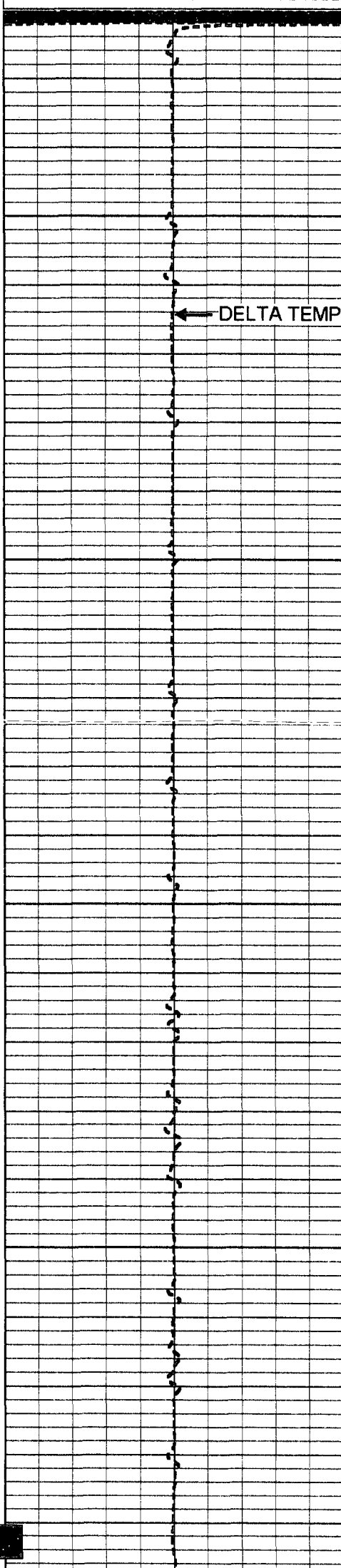
Dataset Pathname: pass1
Presentation Format: temp.prs
Dataset Creation: Fri May 25 12:53:30 2001
Charted by: Depth in Feet scaled 1:240

-1 DELTA TEMPERATURE (degF) 1

80

TEMPERATURE (degF)

120



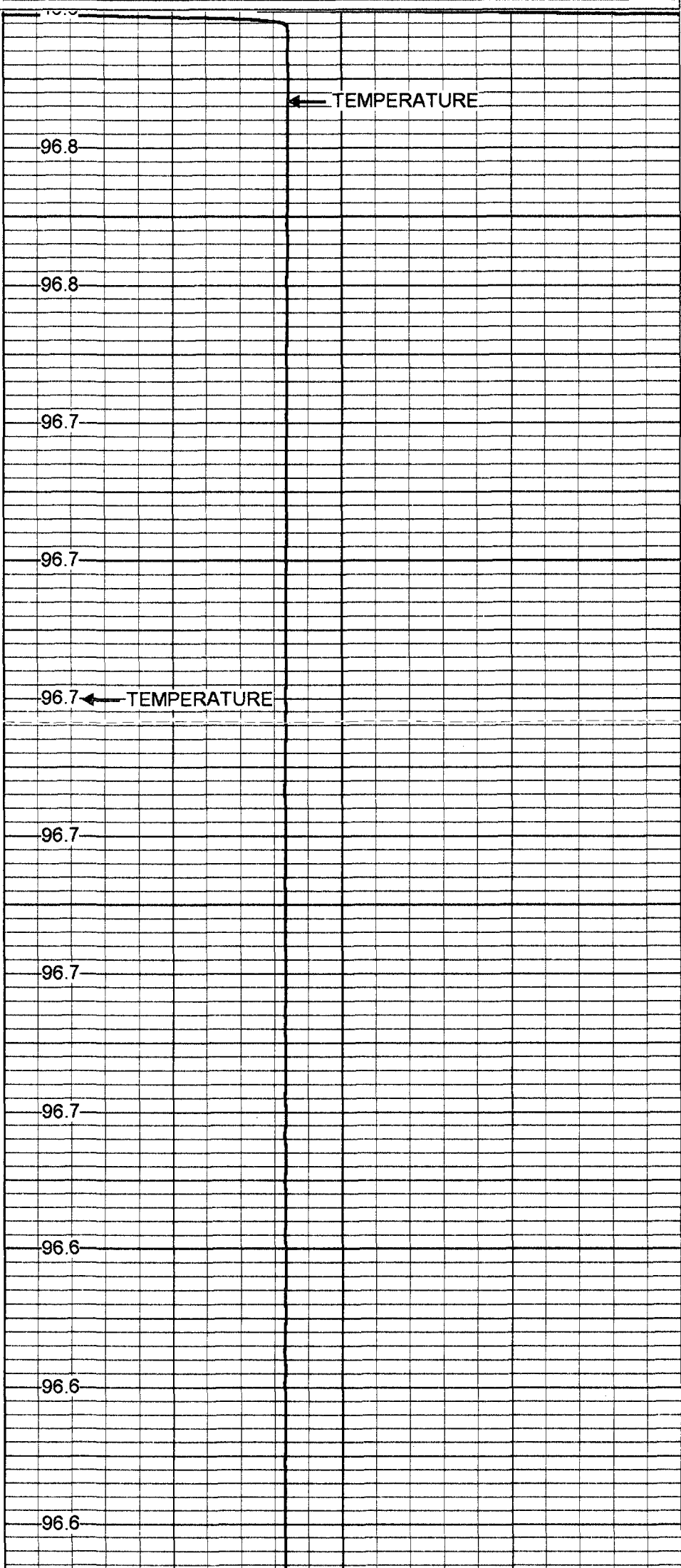
← DELTA TEMPERATURE

50

100

150

200



← TEMPERATURE

96.8

96.8

96.7

96.7

96.7 ← TEMPERATURE

96.7

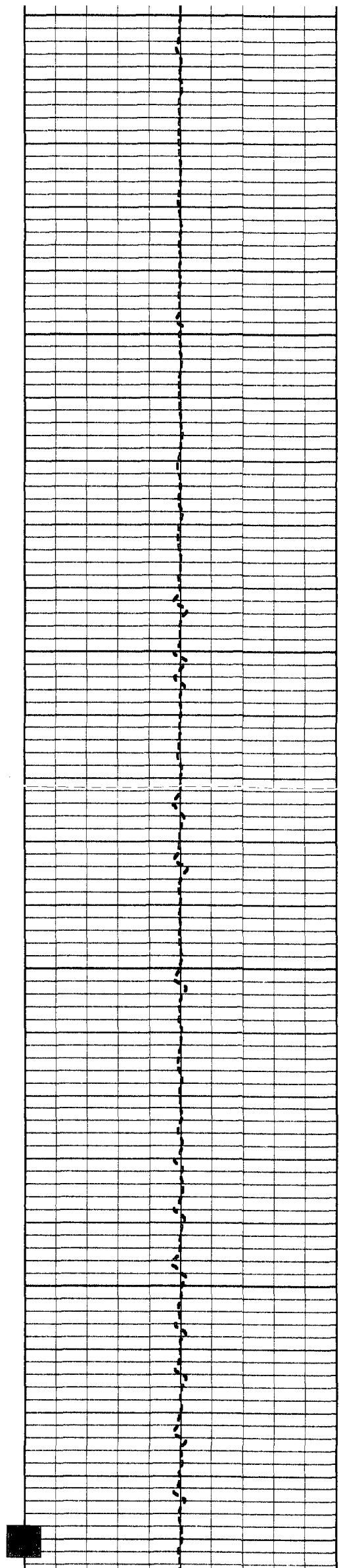
96.7

96.7

96.6

96.6

96.6



250

96.6

96.6

300

96.6

96.6

96.6

350

96.6

96.6

400

96.6

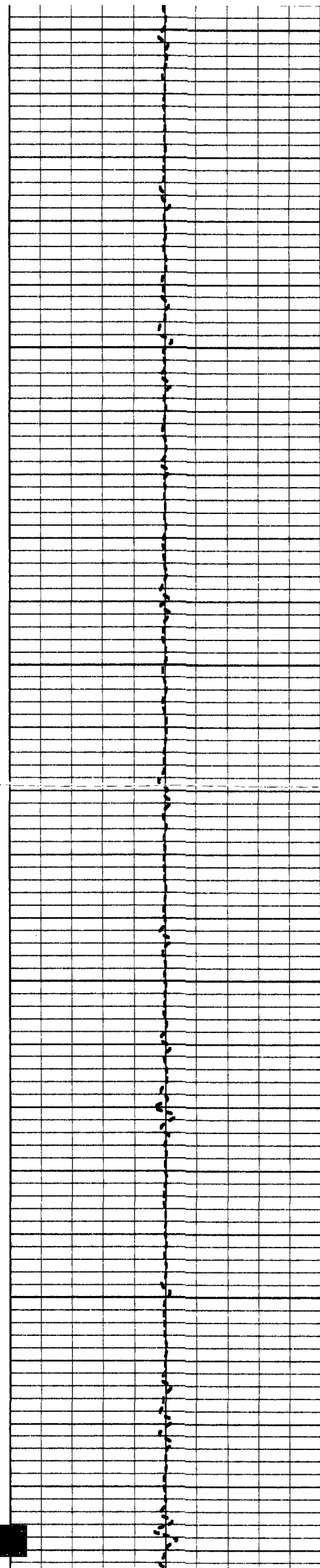
96.6

96.5

450

96.5

96.5



500

96.5

96.6

96.6

550

96.6

96.6

600

96.6

96.6

96.6

650

96.6

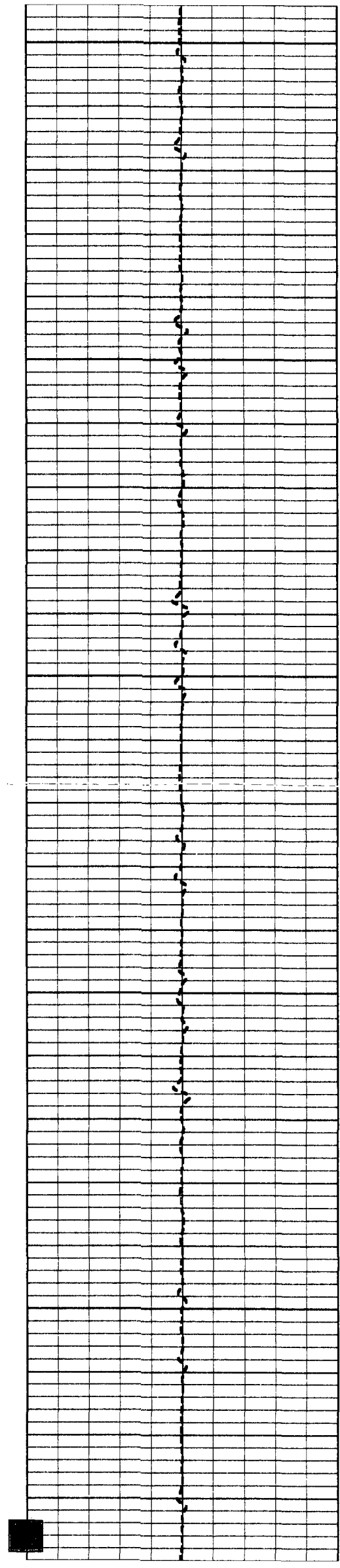
96.6

700

96.7

96.6

96.7



750

96.6

96.7

800

96.7

96.7

96.7

850

96.7

96.7

900

96.7

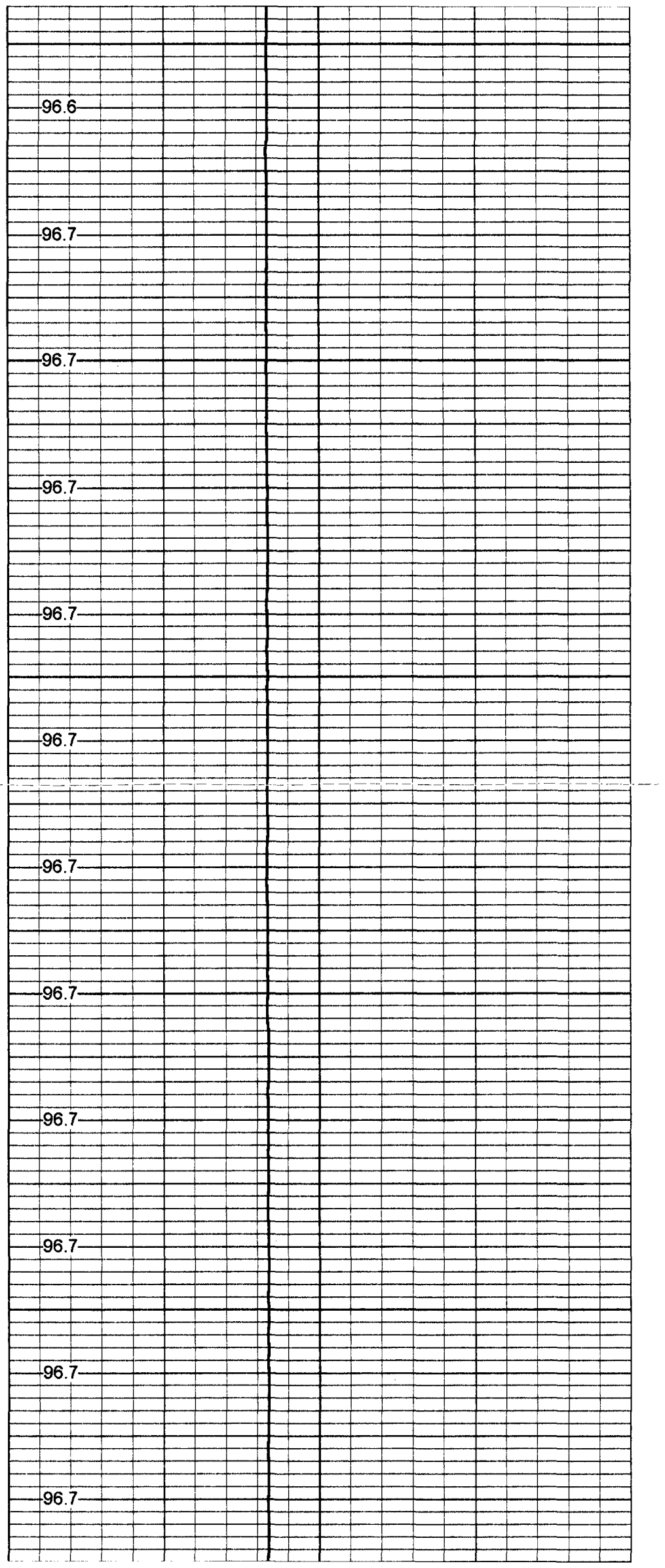
96.7

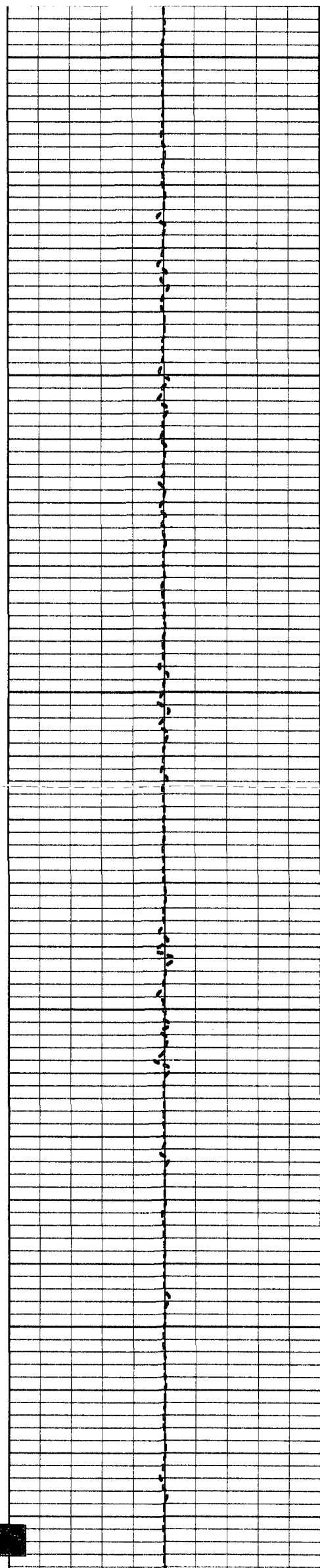
96.7

950

96.7

96.7





1000

96.7

96.7

96.7

1050

96.7

96.7

1100

96.7

96.7

96.7

1150

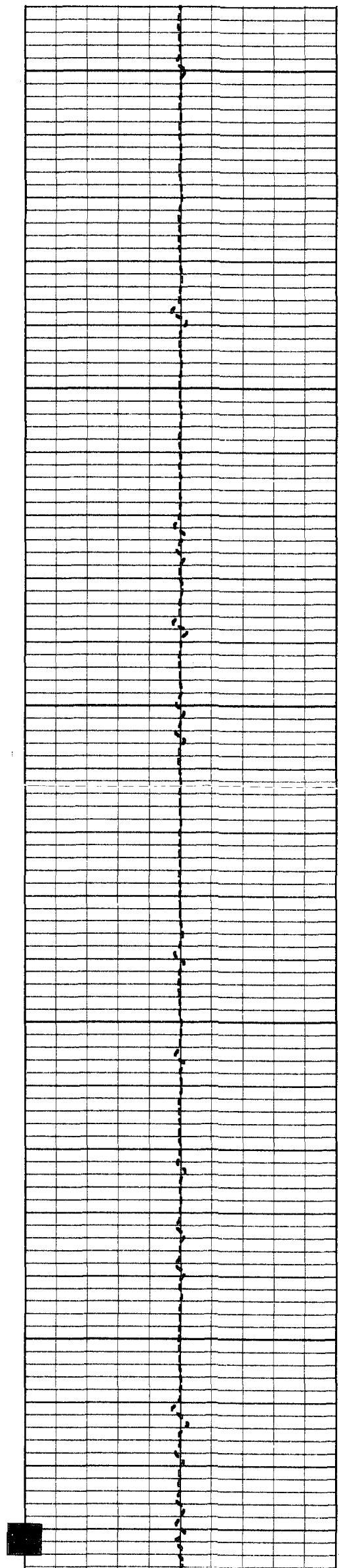
96.7

96.7

1200

96.8

96.8



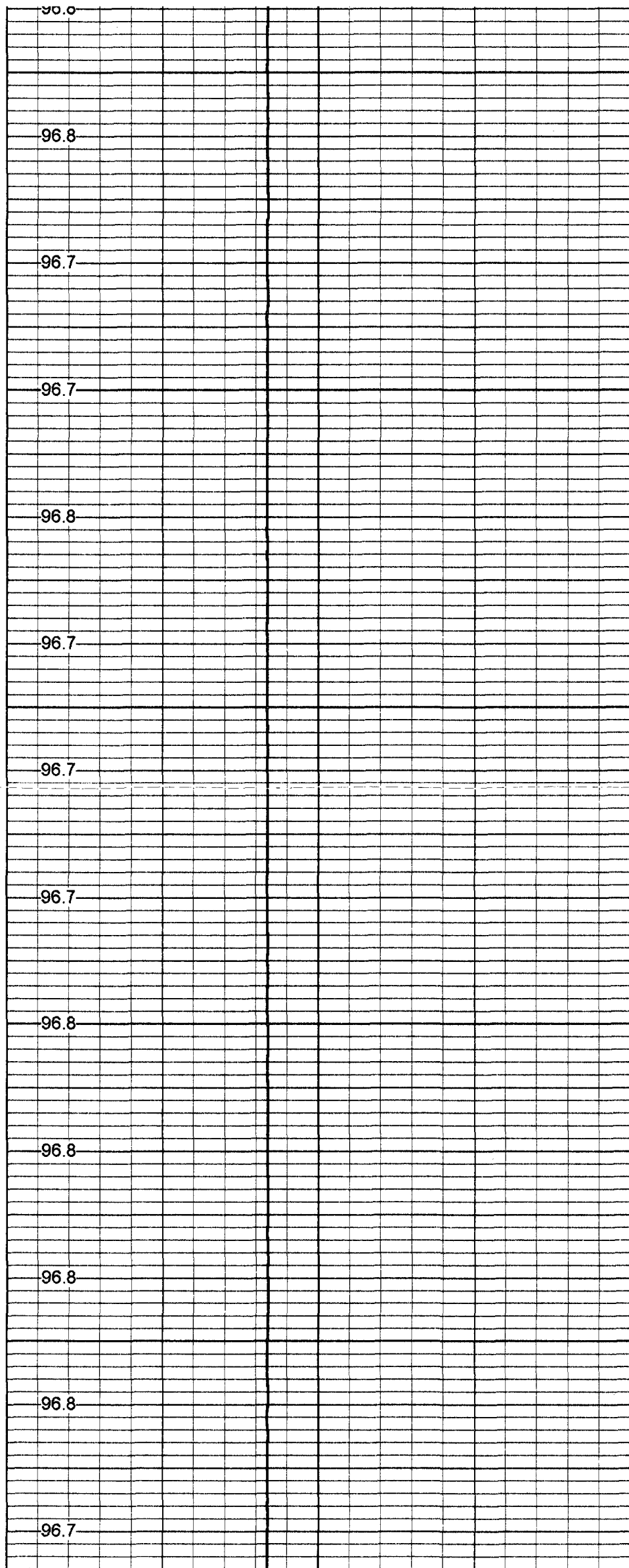
1250

1300

1350

1400

1450



96.0

96.8

96.7

96.7

96.8

96.7

96.7

96.7

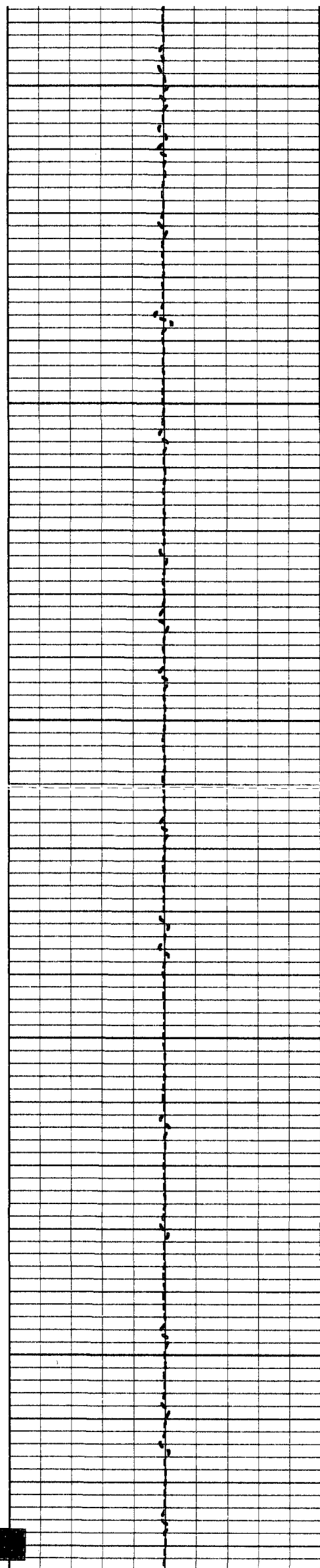
96.8

96.8

96.8

96.8

96.7



1500

96.7

96.8

96.8

1550

96.8

96.8

1600

96.8

96.8

96.8

1650

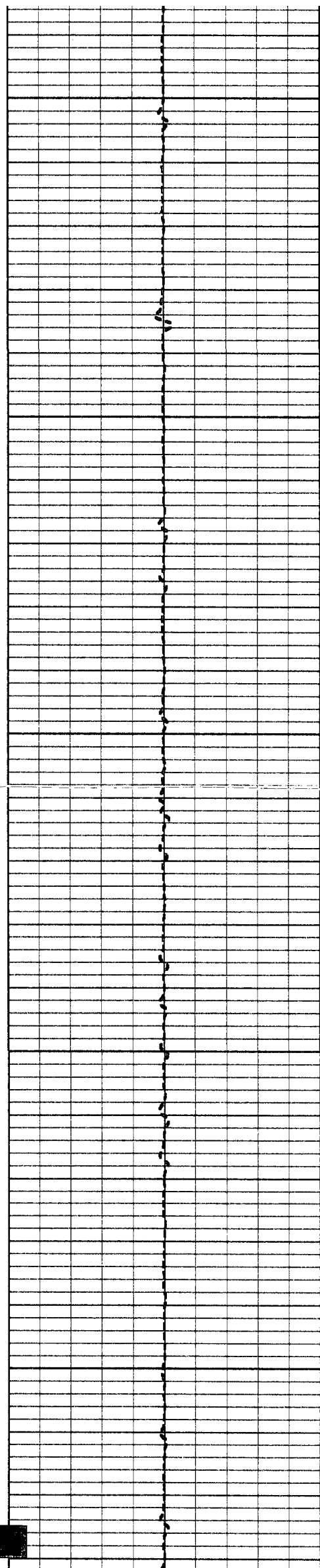
96.8

96.8

1700

96.8

96.8



1750

96.8

96.8

96.8

1800

96.8

96.8

96.8

1850

96.8

96.8

1900

96.8

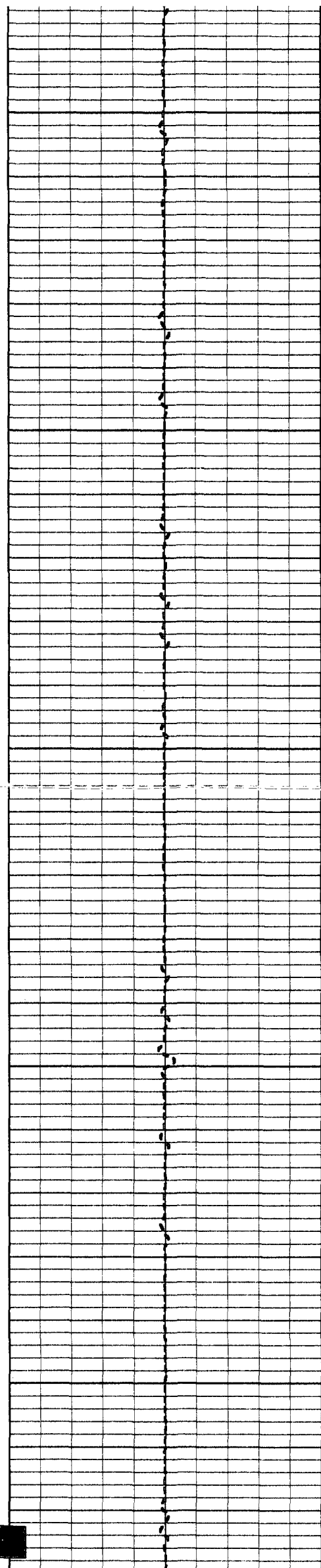
96.8

96.8

1950

96.8

96.8



2000

96.8

96.8

96.9

2050

96.8

96.9

2100

96.9

96.9

96.9

2150

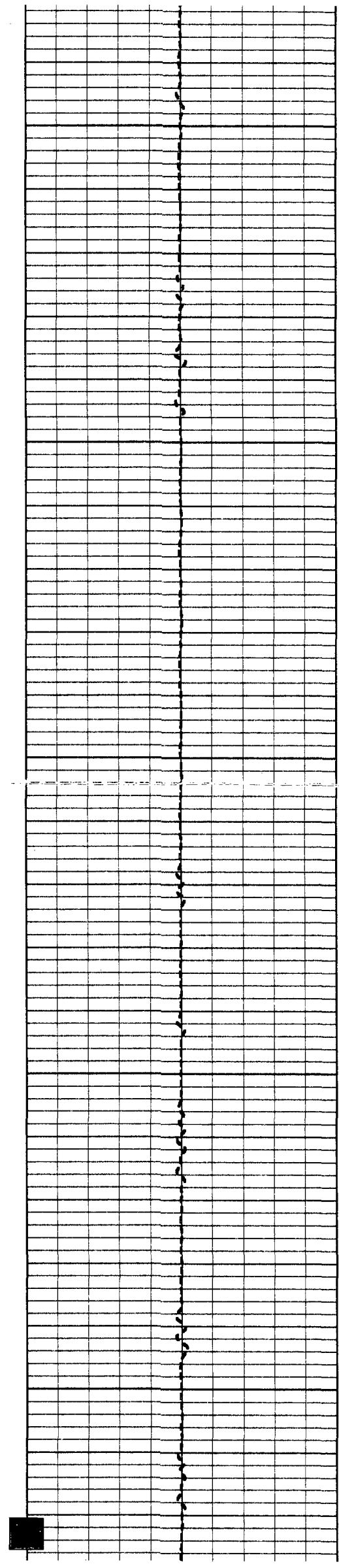
96.9

96.9

2200

96.9

96.9



2250

2300

2350

2400

2450

96.9

96.9

96.9

96.9

96.9

96.9

97.0

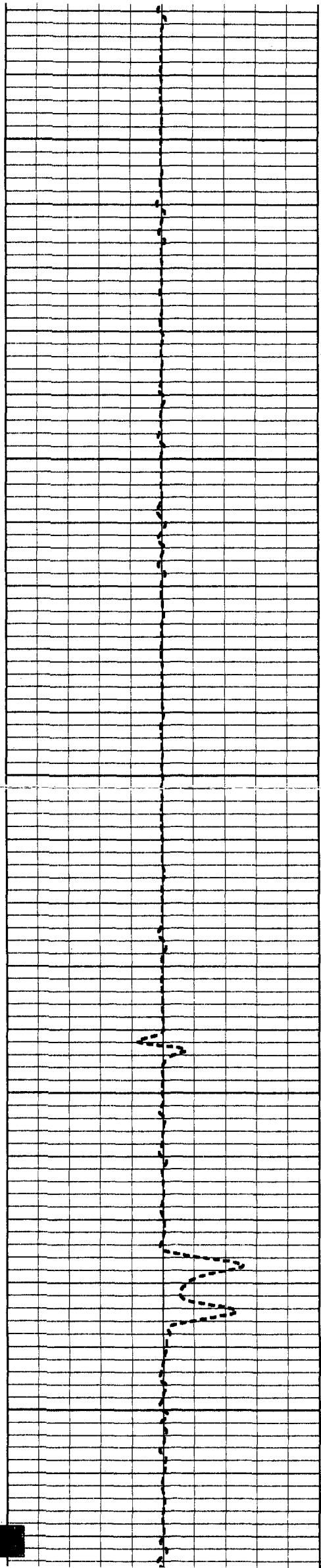
97.0

97.0

97.0

96.9

97.0



2500

2550

2600

2650

2700

97.0

97.0

97.0

97.0

97.0

97.1

97.1

97.1

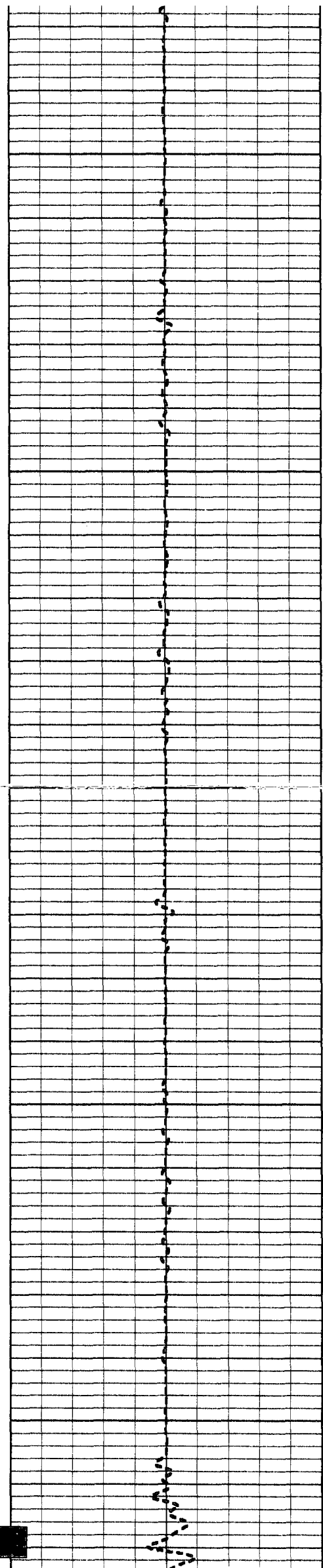
97.1

97.1

98.6

100.3

100.4



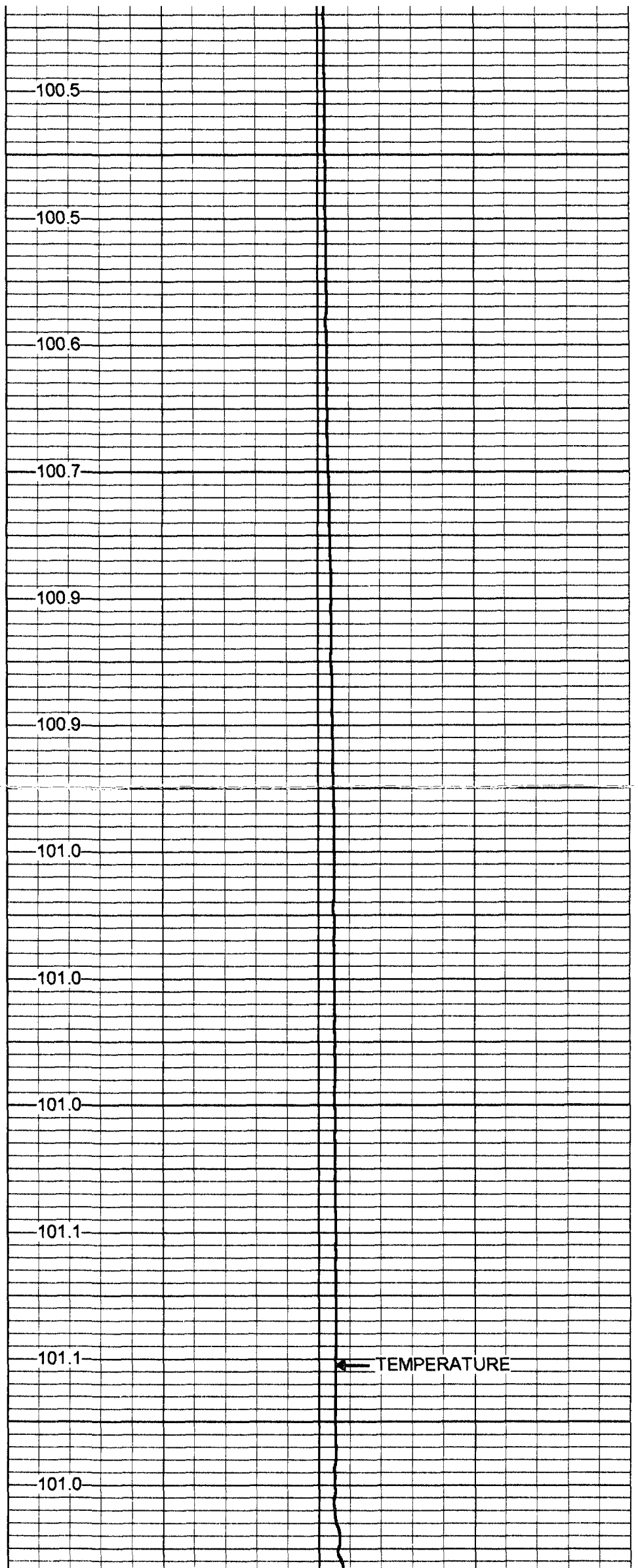
2750

2800

2850

2900

2950



100.5

100.5

100.6

100.7

100.9

100.9

101.0

101.0

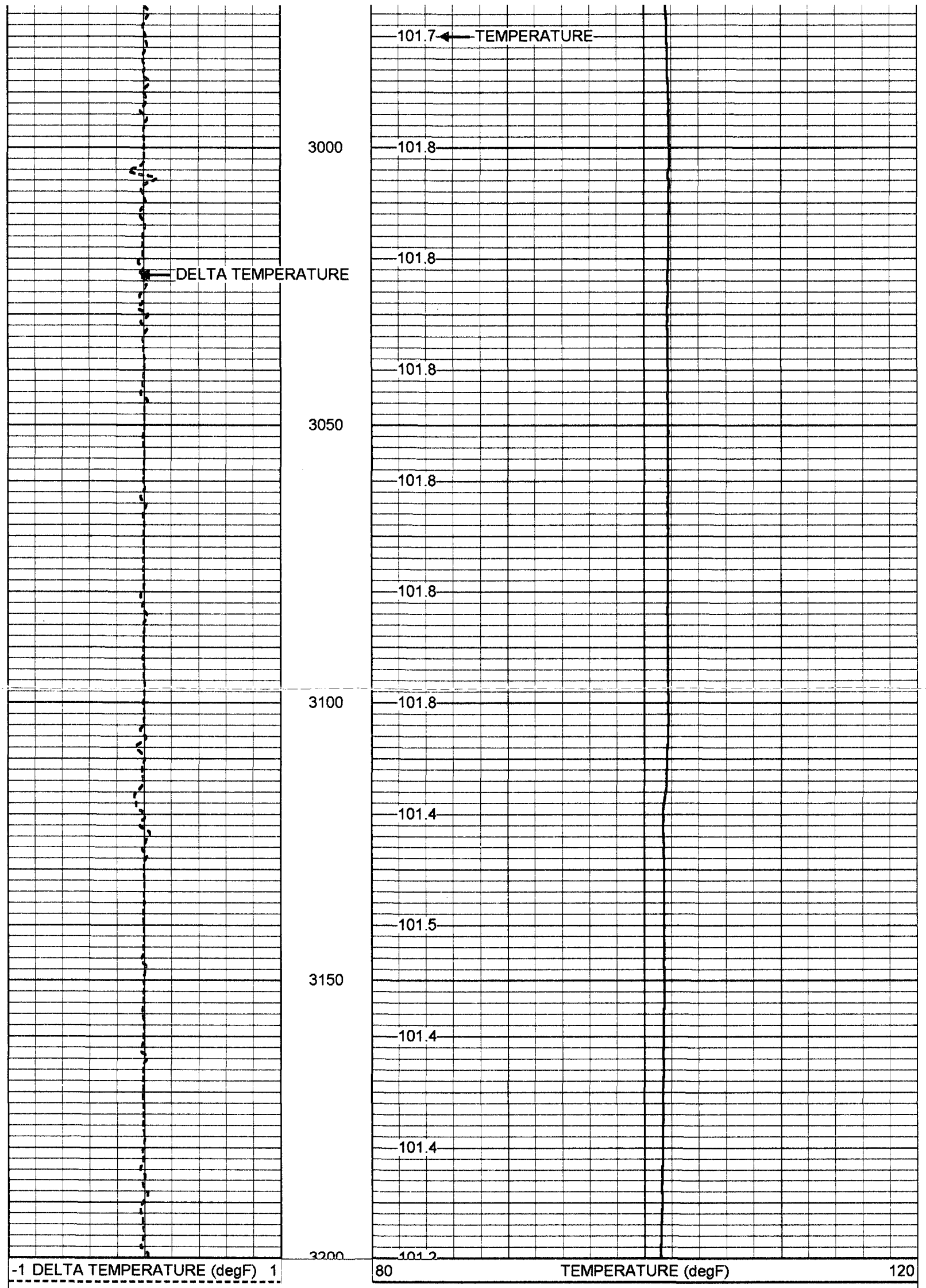
101.0

101.1

101.1

101.0

← TEMPERATURE



Serial Number:
Tool Model:
Performed:

952
RTS
Mon Jan 15 10:32:19 2001

Point #	Reading		Reference	
1	88.3	cps	33	degF
2	767.225	cps	72	degF
3	1247.13	cps	100	degF