



YOUNGQUIST
BROTHERS, Inc
 RECEIVED - D.E.P.
 APR 11 2008
 SOUTH COUNTY REGIONAL W.T.P.
 HIGH RESOLUTION
 TEMPERATURE LOG

Company HAZEN & SAWYER
 Well INJECTION WELL #1
 Field SOUTH COUNTY REGIONAL W.T.P.
 County COLLIER
 State FLORIDA

Company HAZEN & SAWYER
 Well INJECTION WELL #1
 Field SOUTH COUNTY REGIONAL W.T.P.
 County COLLIER
 State FLORIDA

Location		Other Services	
Permanent Datum	PAD	Elevation	
Log Measured From	PAD		
Drilling Measured From	PAD		
		Elevation	
		K.B.	
		D.F.	
		G.L.	

Date	29-JAN-2008		
Run Number	MIT '08		
Depth Driller	3200'		
Depth Logger	2320'		
Bottom Logged Interval	2320'		
Top Log Interval	SURFACE		
Open Hole Size	NA		
Type Fluid	WATER		
Density / Viscosity	NA		
Max. Recorded Temp.	89.5 DEGF.		
Estimated Cement Top	NA		
Time Well Ready	0000		
Time Logger on Bottom	0000		
Equipment Number	102		
Location	FT. MYERS		
Recorded By	LEE		
Witnessed By	J. WHEATLY		

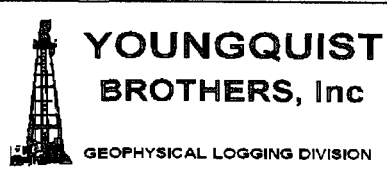
Run Number	Borehole Record		Run No.	Borehole Record	
	Bit	From		Bit	To
Casing Record					
Surface String	24"				
Prot. String					
Production String					
Lineer					

<<< Fold Here >>>

All interpretations are opinions based on inferences from electrical or other measurements and we cannot and do not guarantee the accuracy or correctness of any interpretation, and we shall not, except in the case of gross or willful negligence on our part, be liable or responsible for any loss, costs, damages, or expenses incurred or sustained by anyone resulting from any interpretation made by any of our officers, agents or employees. These interpretations are also subject to our general terms and conditions set out in our current Price Schedule.

Comments

RTS
 HRT
 DHTVS



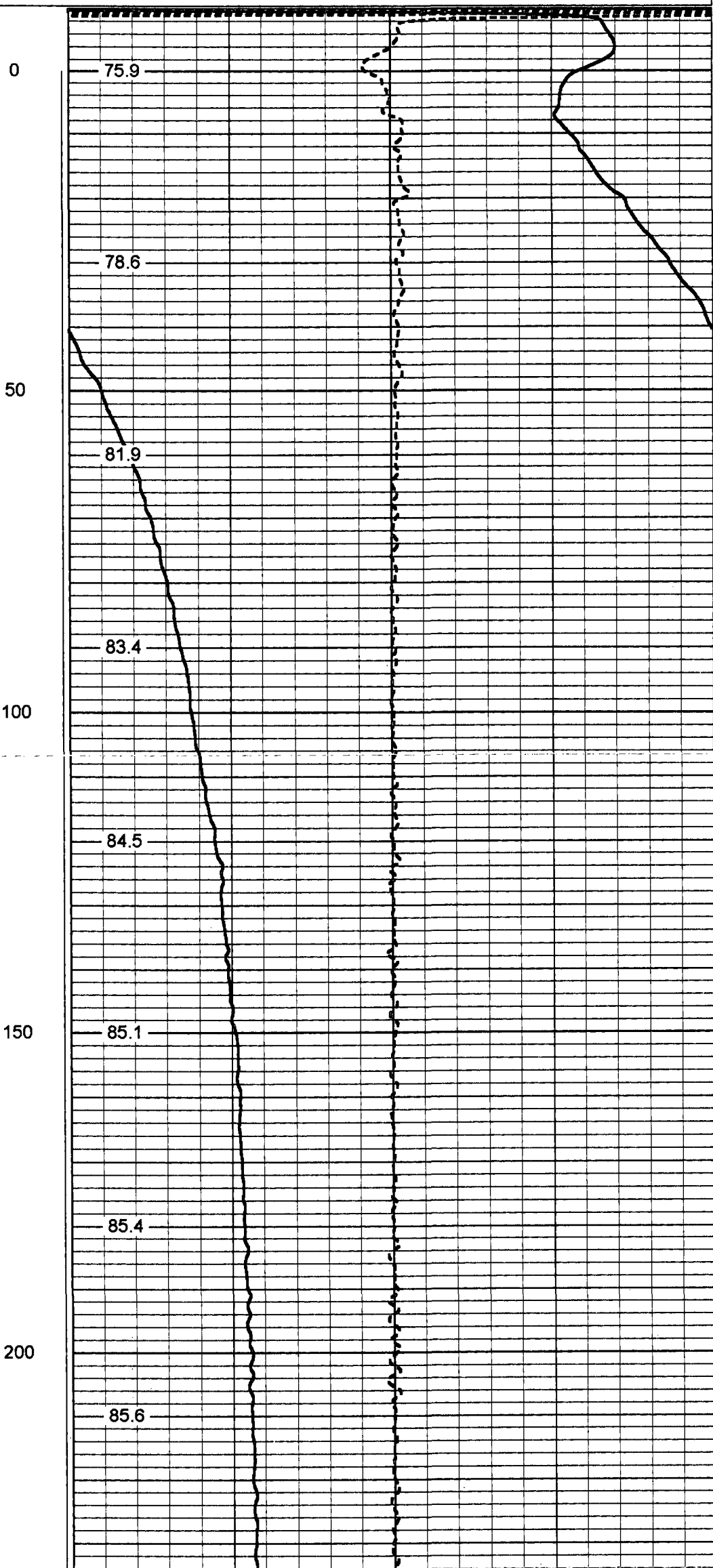
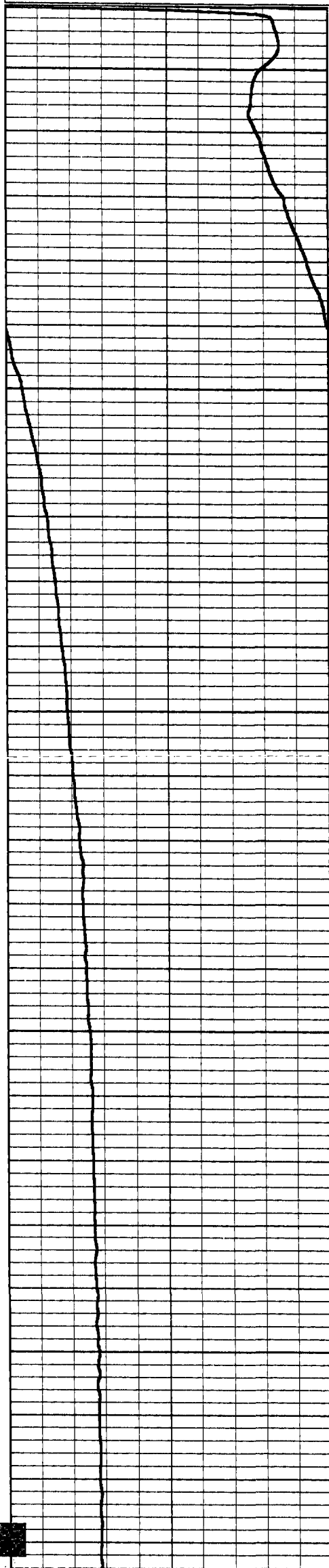
TEMPERATURE

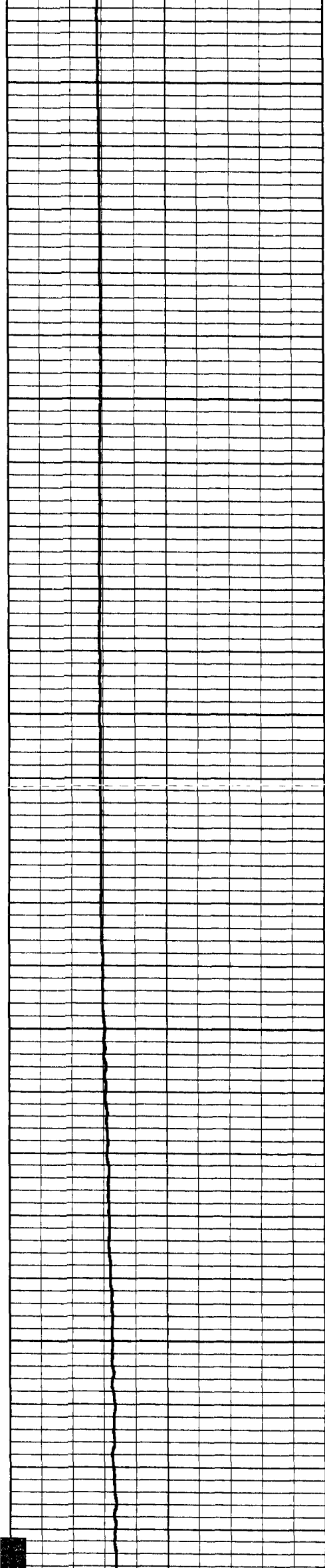
Database File: scolrts2.db
 Dataset Pathname: TEMP
 Presentation Format: temp
 Dataset Creation: Wed Jan 30 07:12:53 2008
 Charted by: Depth in Feet scaled 1:240

80 TEMPERATURE (degF) 100

80 Temperature (degF) 100

-5 Delta Temperature (degF) 5





250

300

350

400

450

85.7

85.9

85.9

85.8

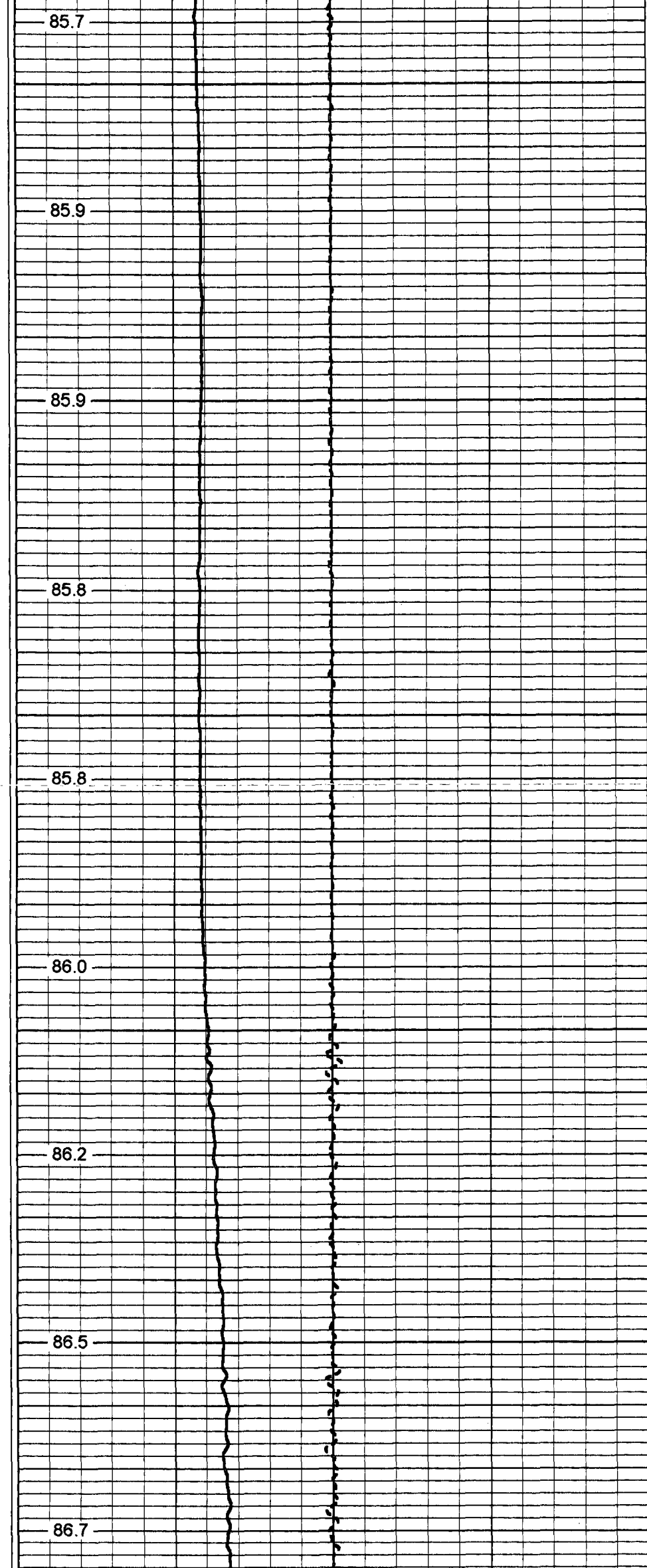
85.8

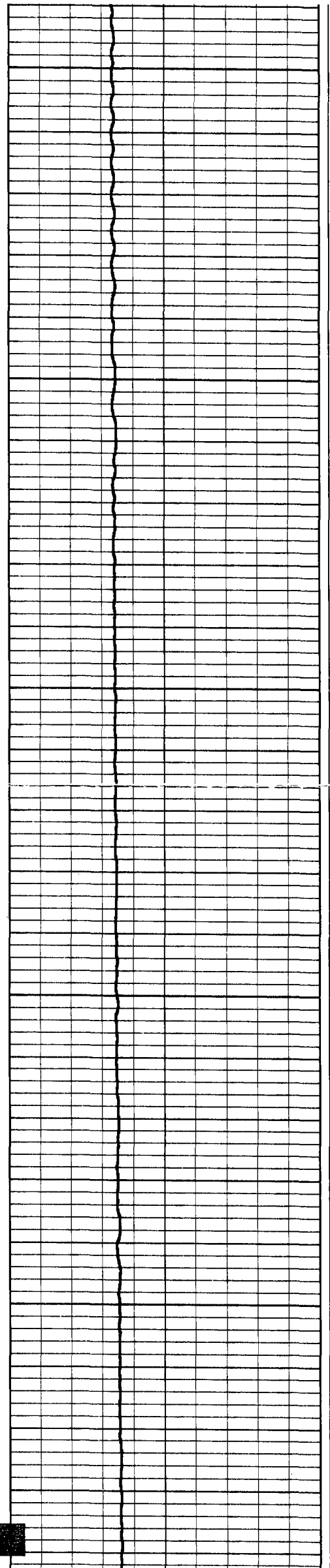
86.0

86.2

86.5

86.7





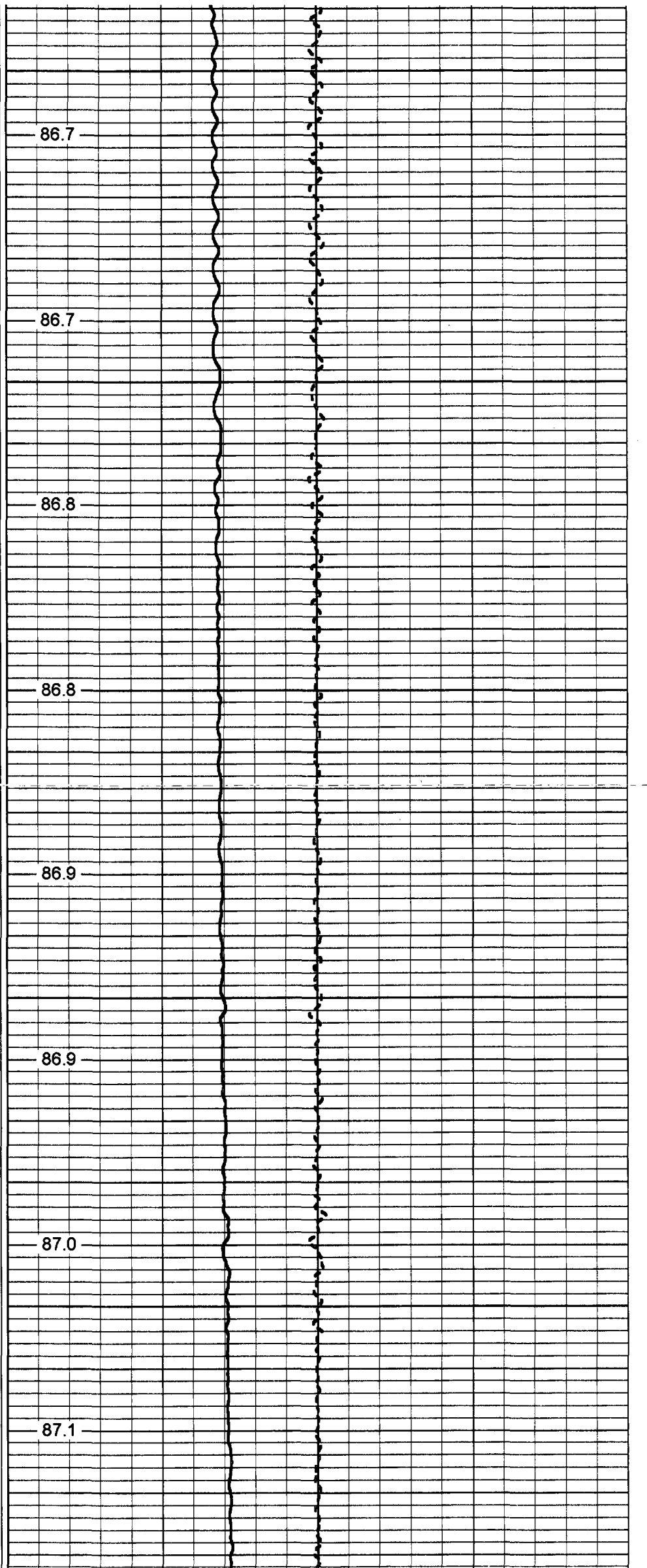
500

550

600

650

700



86.7

86.7

86.8

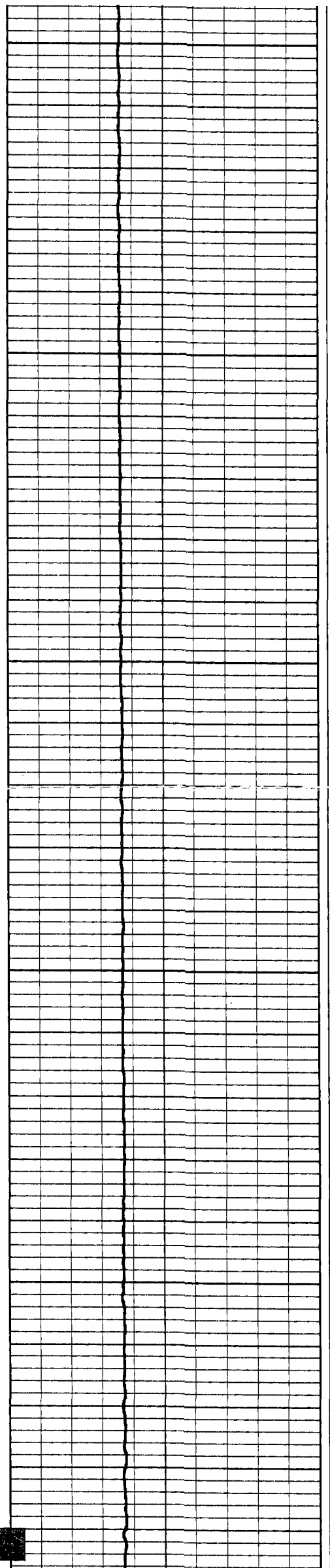
86.8

86.9

86.9

87.0

87.1



750

87.2

800

87.2

850

87.3

87.3

900

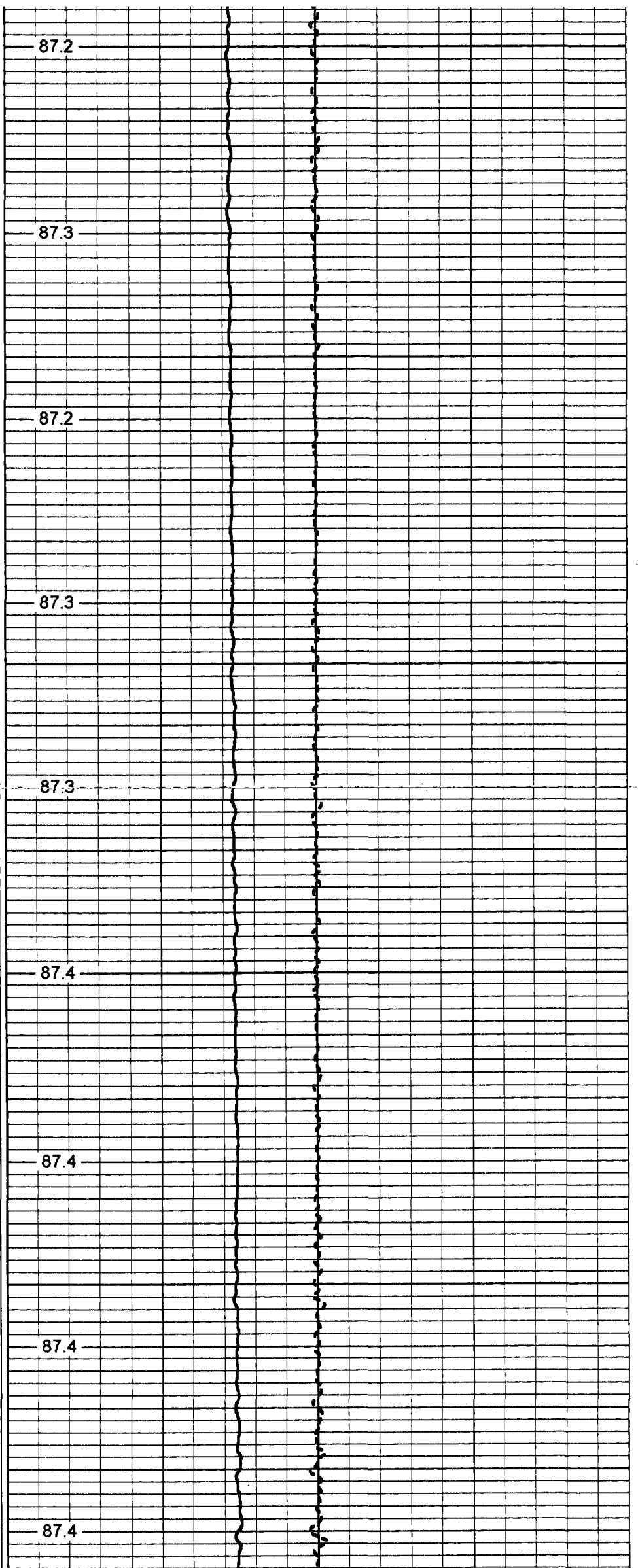
87.4

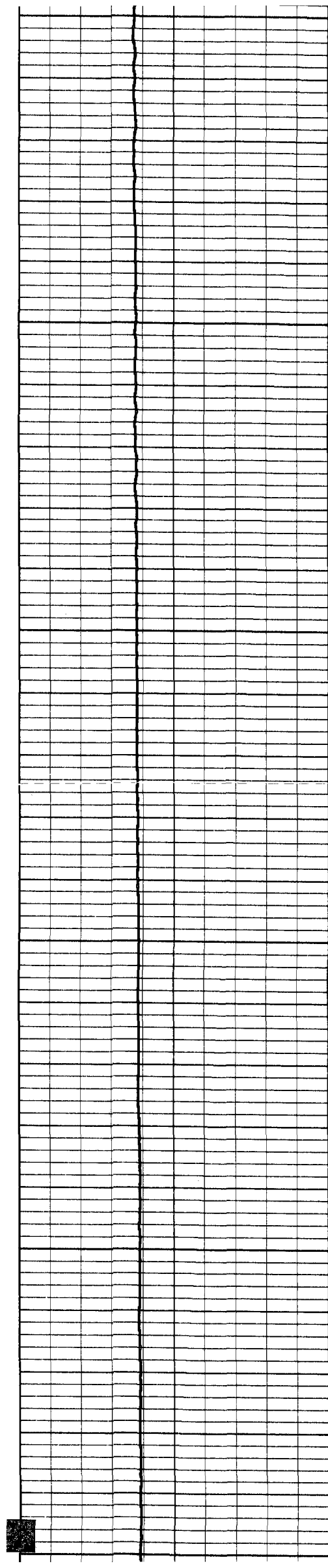
87.4

950

87.4

87.4





1000

87.5

1050

87.6

87.6

1100

87.6

87.7

1150

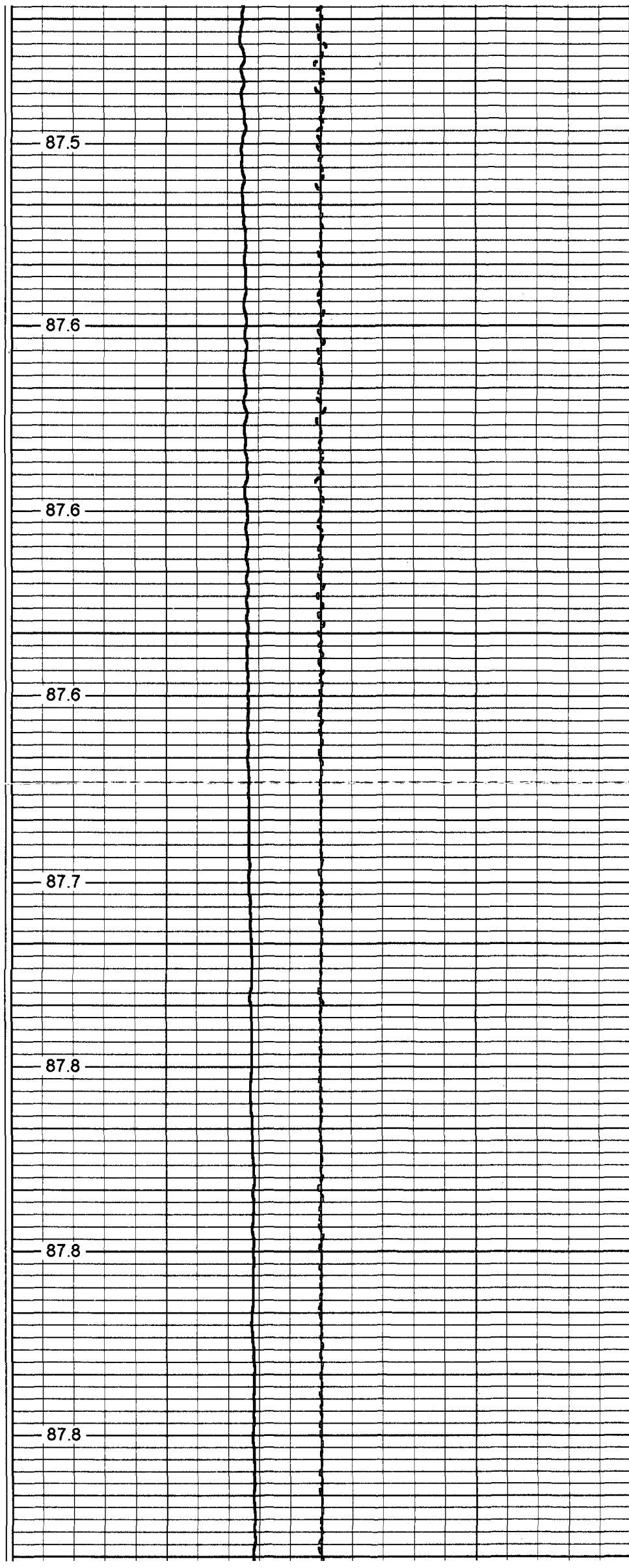
87.8

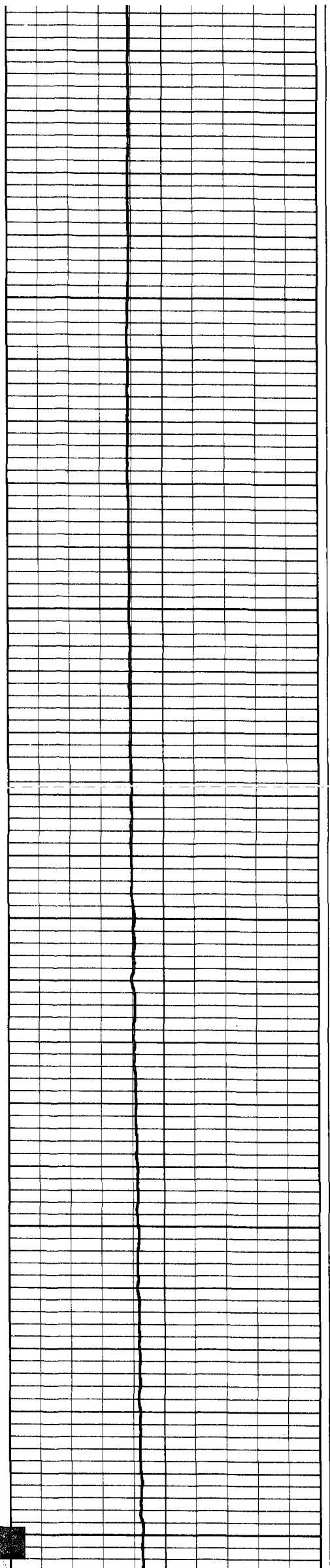
1200

87.8

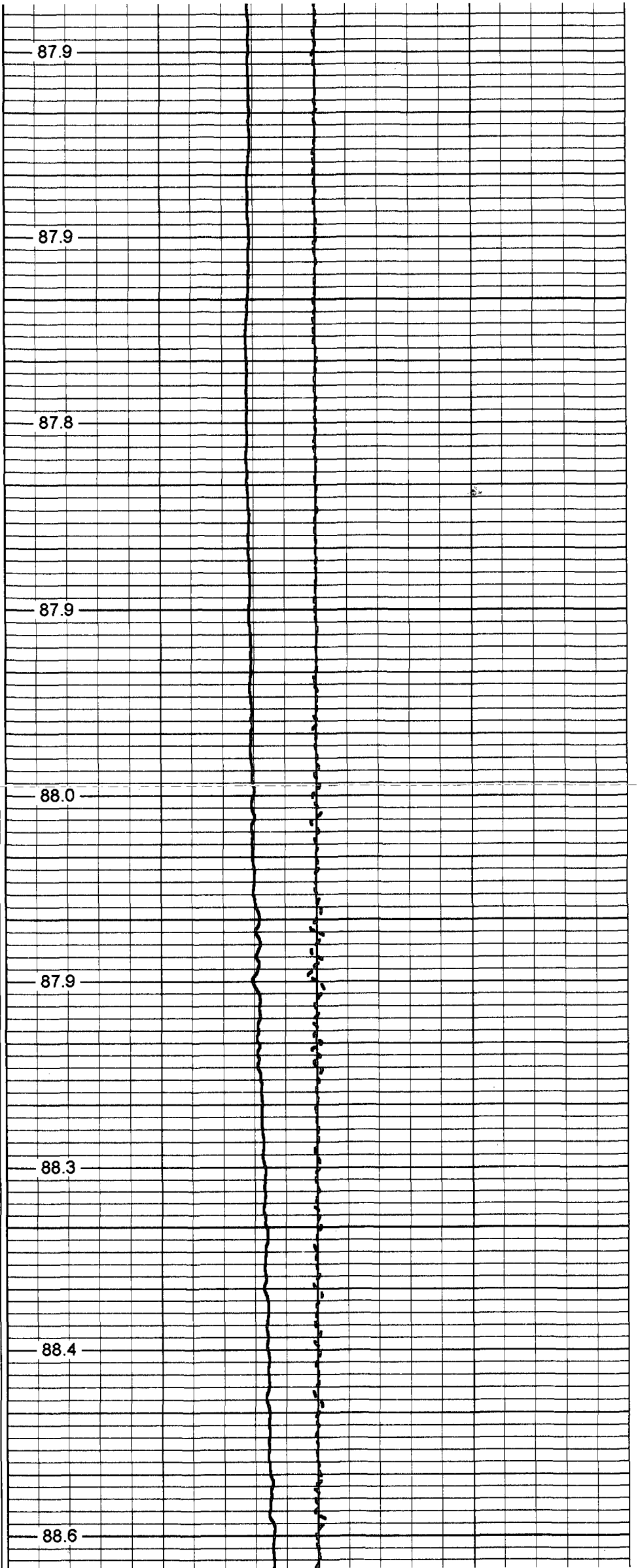
87.8

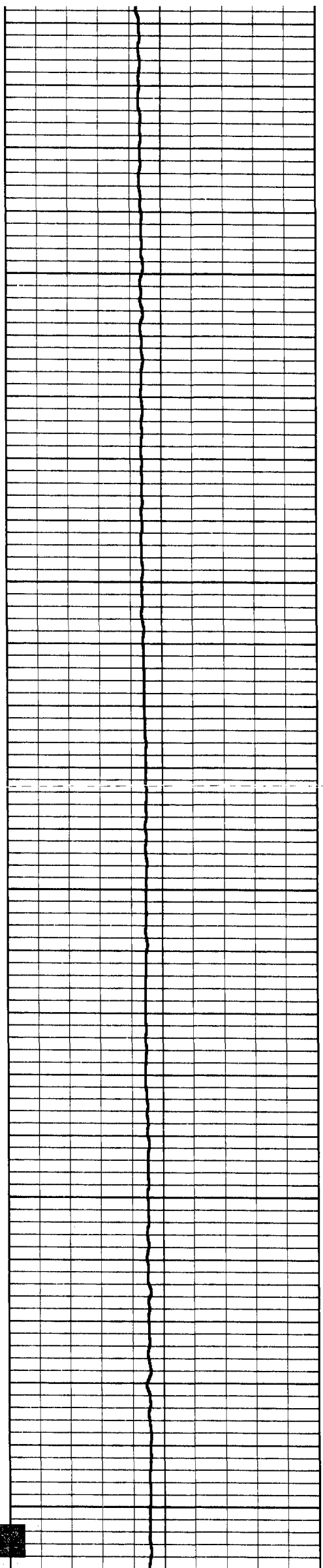
1250





1300
1350
1400
1450
1500





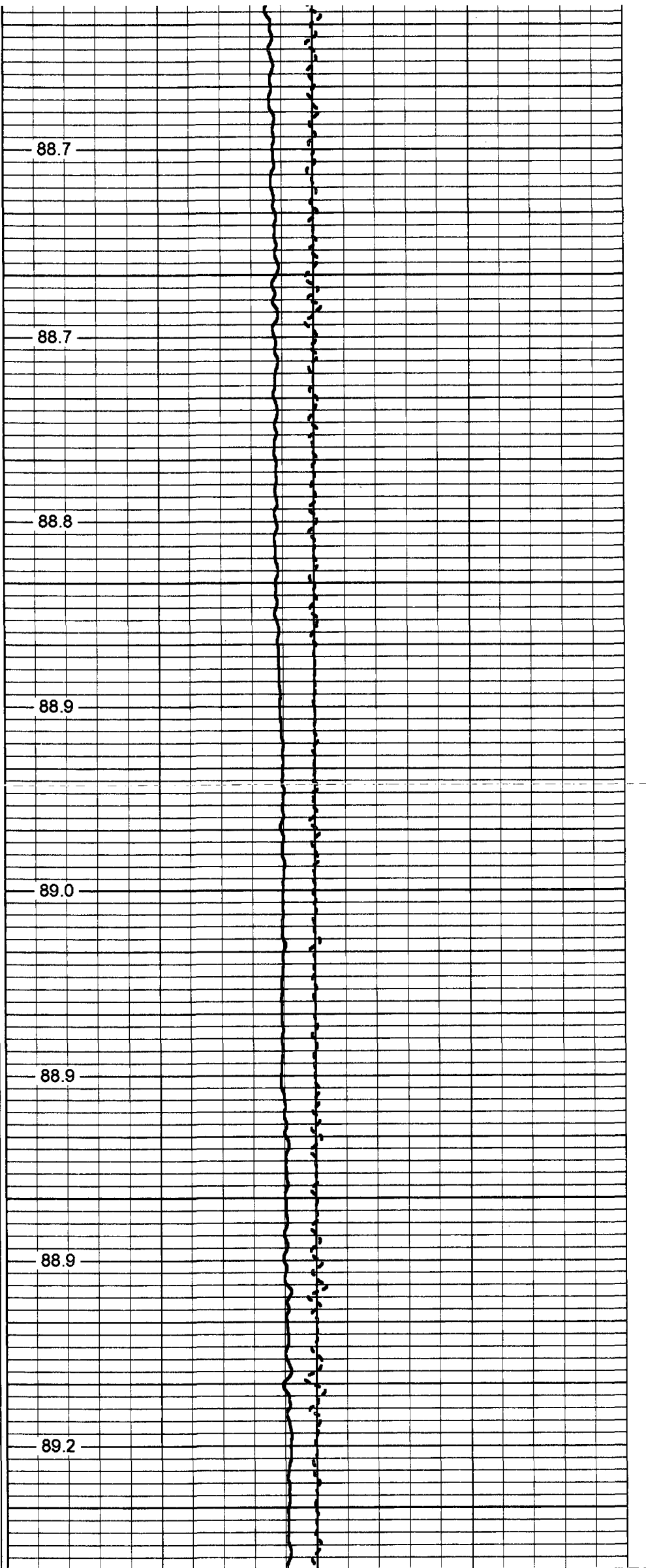
1550

1600

1650

1700

1750



88.7

88.7

88.8

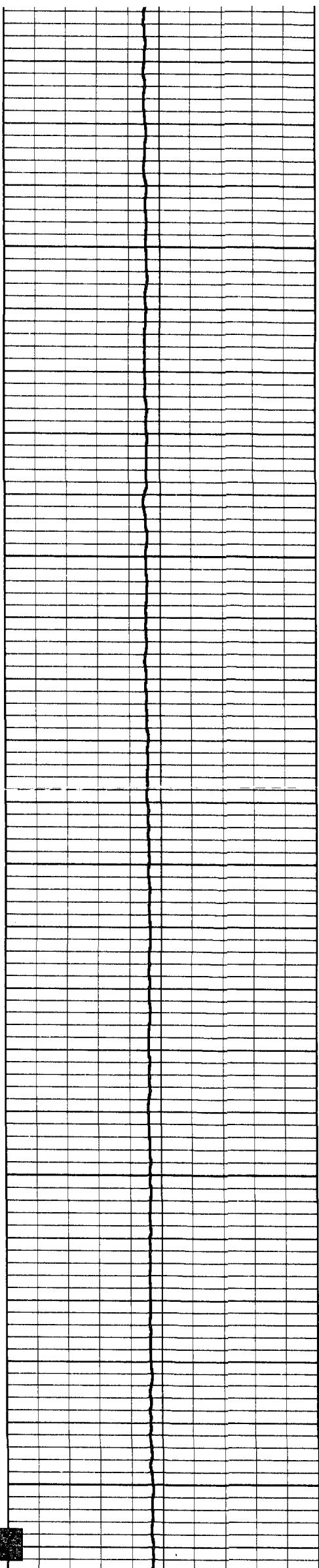
88.9

89.0

88.9

88.9

89.2



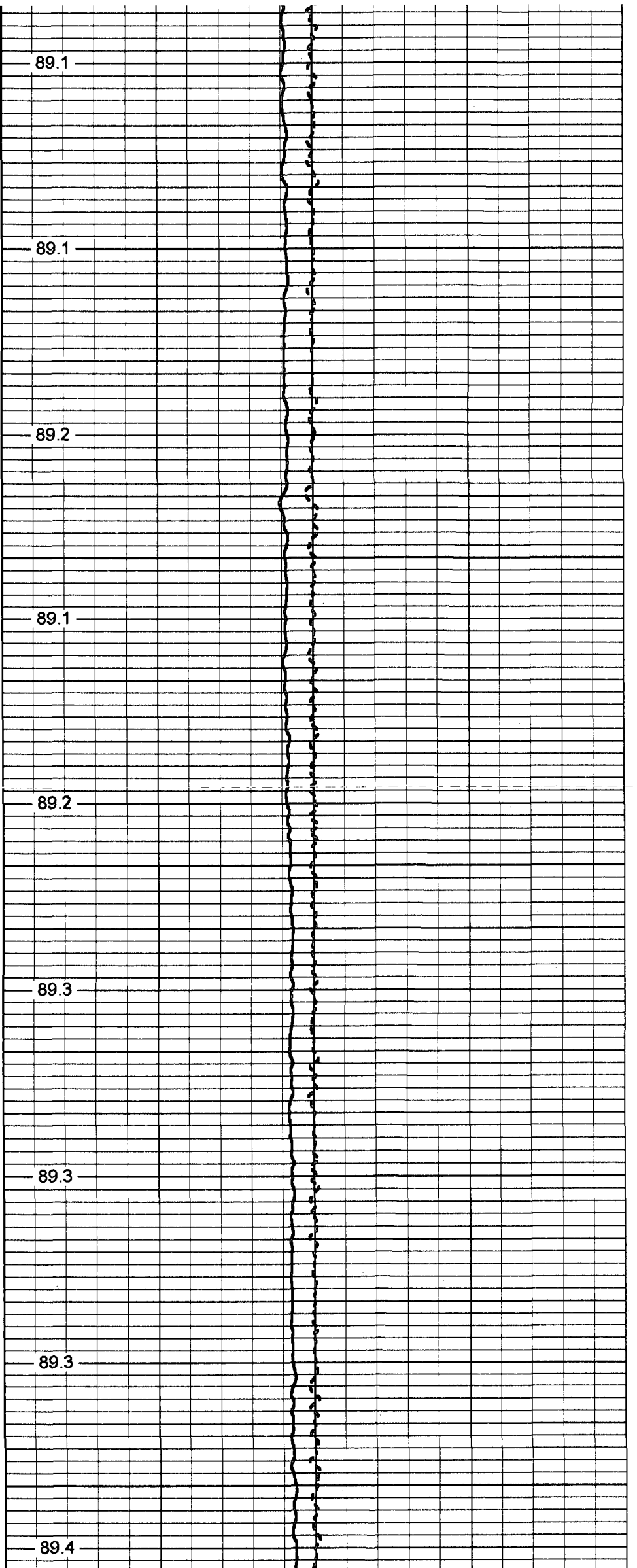
1800

1850

1900

1950

2000



89.1

89.1

89.2

89.1

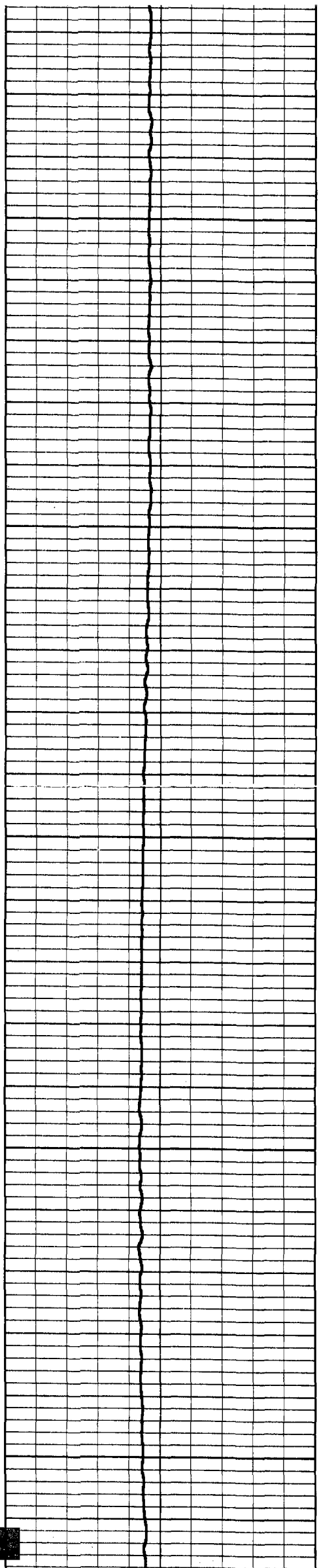
89.2

89.3

89.3

89.3

89.4



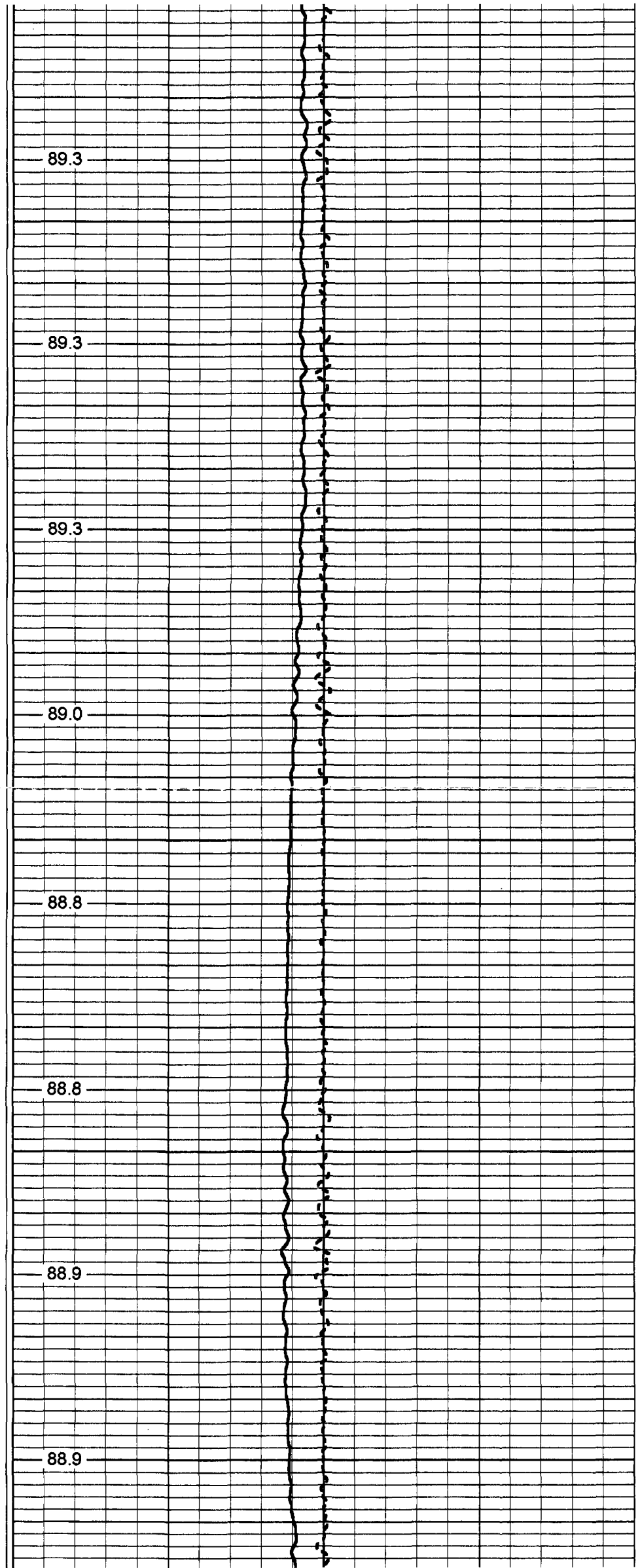
2050

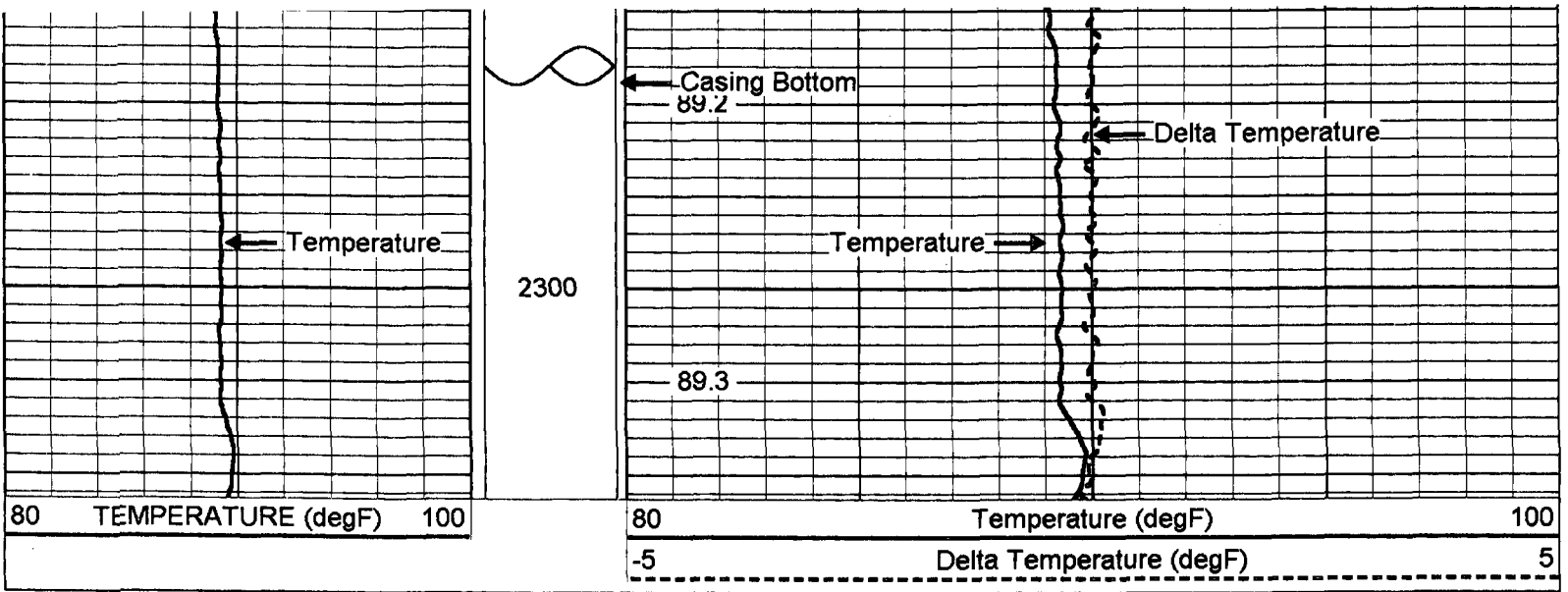
2100

2150

2200

2250





Temperature Calibration Report

	Serial Number:	17	
	Tool Model:	MLS	
	Performed:	Sun Jul 08 13:08:06 2007	
Point #	Reading	Reference	Reference
1	320 cps	32	degF
2	700 cps	70	degF
3	2000 cps	200	degF

