



YOUNGQUIST BROTHERS, Inc
GEOPHYSICAL LOGGING DIVISION

FLUID CONDUCTIVITY TEMPERATURE LOG

Company **HAZEN & SAWYER**
Well **DZMW #1**
Field **SOUTH CITY REGIONAL**
County **COLLIER** State **FLORIDA**

Company **HAZEN & SAWYER**
Well **DZMW #1**
Field **SOUTH CITY REGIONAL WTP R/O EX**
County **COLLIER** State **FLORIDA**

Location

Permanent Datum **PAD** Elevation
Log Measured From **GROUND LEVEL**
Drilling Measured From

Other Services
SEE COMMENTS
Elevation
K.B.
D.F.
G.L.

Date	1-DEC-2002			
Run Number	Bit	From	To	Run Number
Depth Driller	ONE	34.5"	SURFACE	340'
Depth Logger	TWO	22"	CASING	1135'
Bottom Logged Interval	THREE	14.75"	CASING	1600'
Top Log Interval				
Open Hole Size	14.75"			
Type Fluid	WATER			
Density / Viscosity	N/A			
Max. Recorded Temp.	N/A			
Estimated Cement Top	N/A			
Time Well Ready	1430			
Time Logger on Bottom	1500			
Equipment Number	103			
Location	FT. MYERS			
Recorded By	DENISON/BARRETT			
Witnessed By	D. HOLLAND			

<<< Fold Here >>>

All interpretations are opinions based on inferences from electrical or other measurements and we cannot and do not guarantee the accuracy or correctness of any interpretation, and we shall not, except in the case of gross or willful negligence on our part, be liable or responsible for any loss, costs, damages, or expenses incurred or sustained by anyone resulting from any interpretation made by any of our officers, agents or employees. These interpretations are also subject to our general terms and conditions set out in our current Price Schedule.

Comments

FLOWRATE = 300 GPM

OTHER SERVICES:
DUAL INDUCTION
BOND LOG
XYC/GR
SONIC W/VDL
FLOWMETER

Entered into
OCULUS
South District

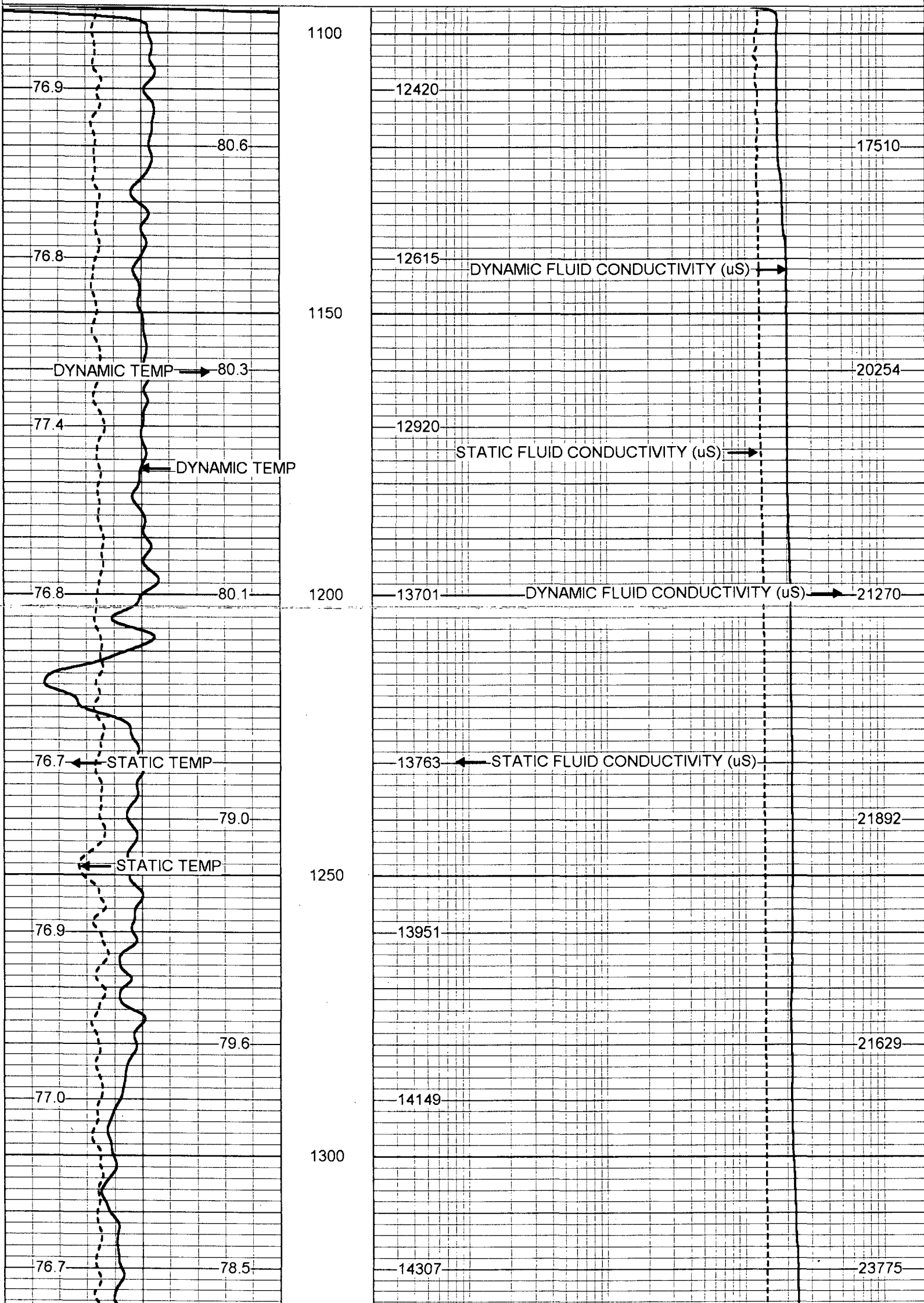


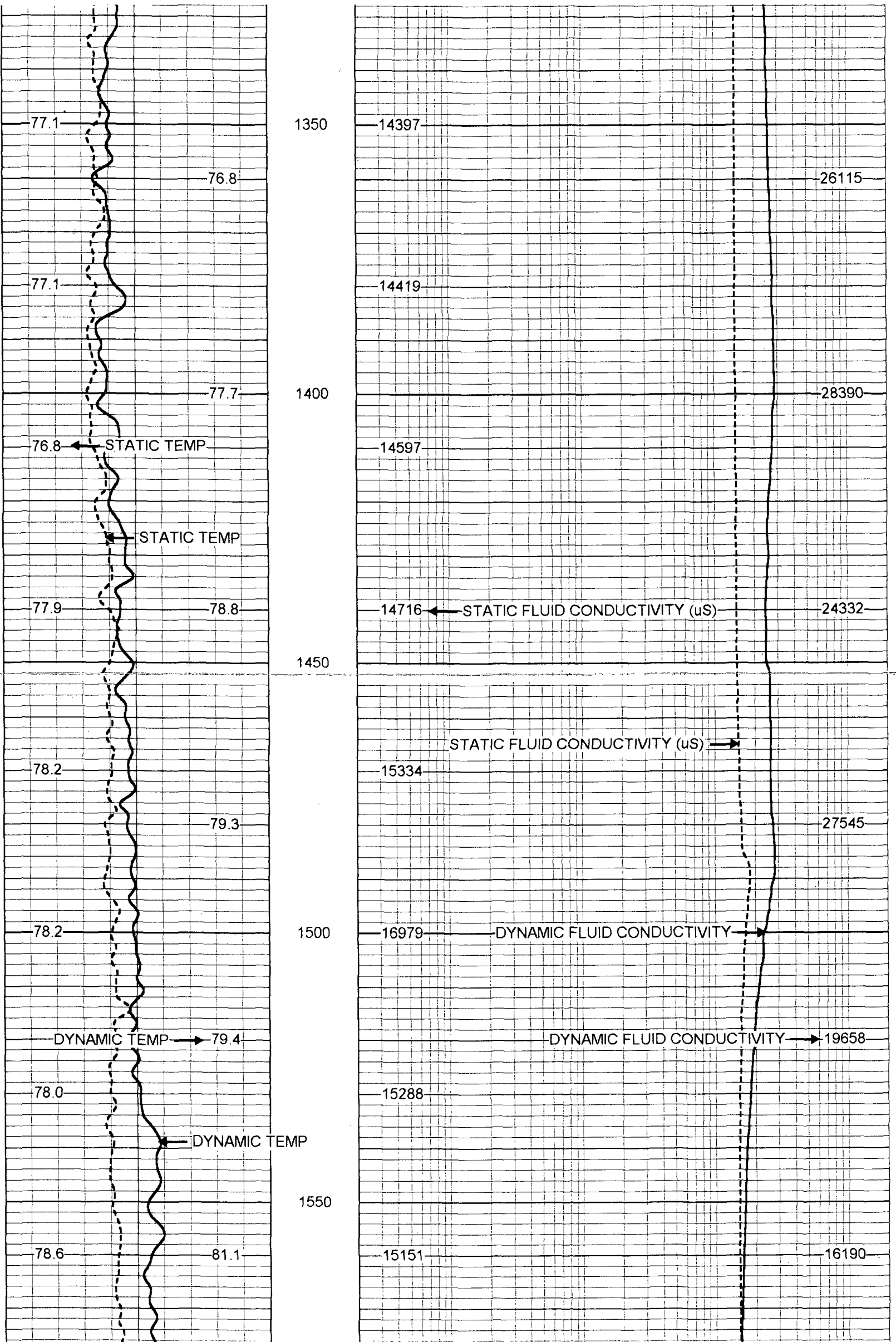
MERGED FCT/TEMP

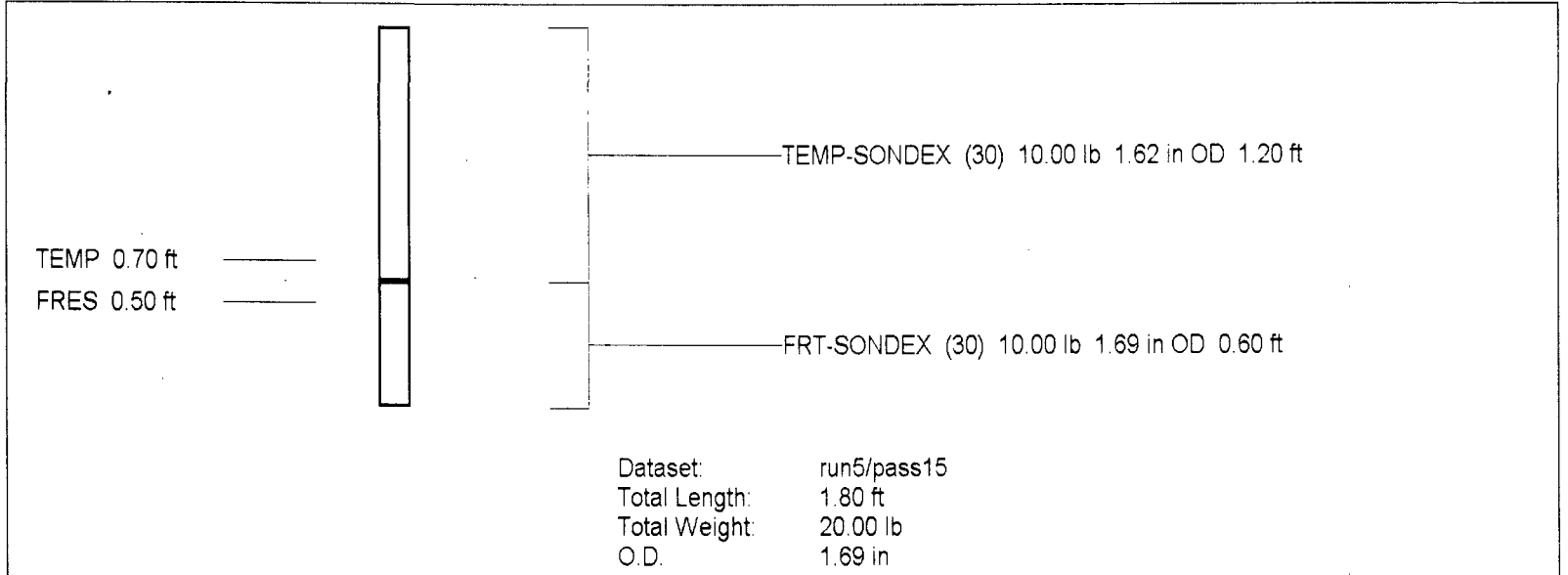
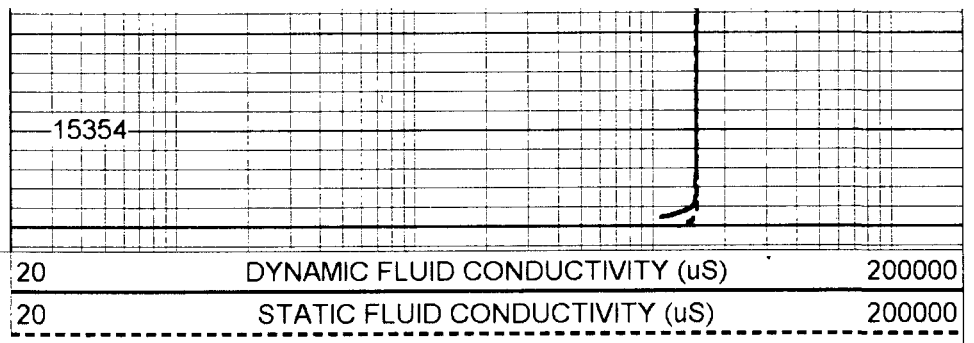
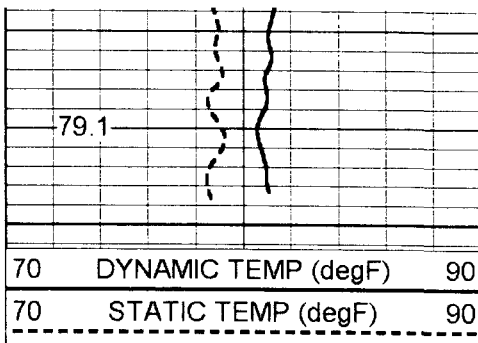
Database File: sodzwm1.db
Dataset Pathname: run5/pass15
Presentation Format: frt_mg.prs

70	DYNAMIC TEMP (degF)	90
70	STATIC TEMP (degF)	90

20	DYNAMIC FLUID CONDUCTIVITY (uS)	200000
20	STATIC FLUID CONDUCTIVITY (uS)	200000







FRT Calibration Report			
Serial Number:		30	
Tool Model:		SONDEX	
Performed:		Thu Apr 18 14:47:29 2002	
Point #	Reading		Reference
1	42.904	cps	1000.000
2	309.469	cps	10000.000
3	858.679	cps	25000.000
4	1742.780	cps	50000.000
5	3177.680	cps	70000.000
6		cps	

Temperature Calibration Report				
Serial Number:		30		
Tool Model:		SONDEX		
Performed:		Thu Apr 18 13:26:57 2002		
Point #	Reading		Reference	
1	109.698	cps	34	degF
2	681.903	cps	150	degF
3		cps		degF