



YOUNGQUIST BROTHERS, Inc
 GEOPHYSICAL LOGGING DIVISION

REG FLUID CONDUCTIVITY TEMPERATURE LOG
 DEC 10 2002

Company **HAZEN & SAWYER**
 Well **DZMW #1**
 Field **SOUTH CITY REGIONAL**
 County **COLLIER**
 State **FLORIDA**

Company **HAZEN & SAWYER**
 Well **DZMW #1**
 Field **SOUTH CTY REGIONAL WTP R/O EX**
 County **COLLIER**
 State **FLORIDA**

Location
 Permanent Datum **PAD**
 Log Measured From **GROUND LEVEL**
 Drilling Measured From

Elevation
 Other Services
SEE COMMENTS

Date	1-DEC-2002	
Run Number	FIVE	
Depth Driller	1600'	
Depth Logger	1600'	
Bottom Logged Interval	1600'	
Top Log Interval	CASING	
Open Hole Size	14.75"	
Type Fluid	WATER	
Density / Viscosity	N/A	
Max. Recorded Temp.	N/A	
Estimated Cement Top	N/A	
Time Well Ready	1430	
Time Logger on Bottom	1500	
Equipment Number	103	
Location	FT. MYERS	
Recorded By	DENISON/BARRETT	
Witnessed By	D HOLLAND	

Borehole Record		Borehole Record	
Run Number	Bit	From	To
ONE	34.5"	SURFACE	340'
TWO	22"	CASING	1135'
THREE	14.75"	CASING	1600'

Borehole Record		Borehole Record	
Size	Wdth	Top	Bottom
24"	500	SURFACE	330'
16"	500	SURFACE	1125'

<<< Fold Here >>>

All interpretations are opinions based on inferences from electrical or other measurements and we cannot and do not guarantee the accuracy or correctness of any interpretation, and we shall not, except in the case of gross or willful negligence on our part, be liable or responsible for any loss, costs, damages, or expenses incurred or sustained by anyone resulting from any interpretation made by any of our officers, agents or employees. These interpretations are also subject to our general terms and conditions set out in our current Price Schedule.

Comments

FLOWRATE = 300 GPM

OTHER SERVICES:
 DUAL INDUCTION
 BOND LOG
 XYC/GR
 SONIC W/VDL
 FLOWMETER



YOUNGQUIST BROTHERS, Inc

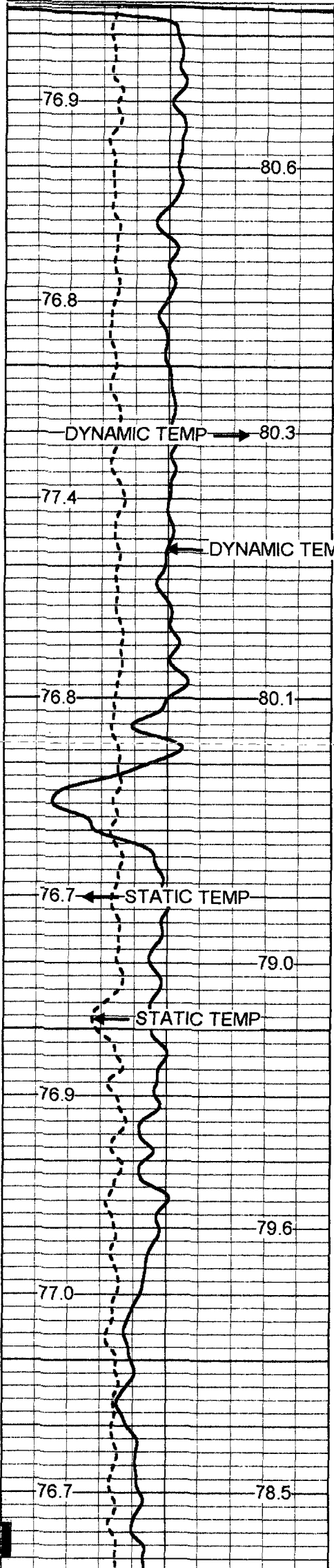
GEOPHYSICAL LOGGING DIVISION

MERGED FCT

Database File: scdzmw1.db
 Dataset Pathname: run5/pass15
 Presentation Format: frt_mg.prs
 Dataset Creation: Mon Dec 02 06:03:03 2002 by Log VER_5.4

70 DYNAMIC TEMP (degF) 90
 70 STATIC TEMP (degF) 90

20 DYNAMIC FLUID CONDUCTIVITY (uS) 200000
 20 STATIC FLUID CONDUCTIVITY (uS) 200000



1100

76.9

80.6

76.8

DYNAMIC TEMP → 80.3

77.4

← DYNAMIC TEMP

76.8

80.1

76.7

← STATIC TEMP

79.0

← STATIC TEMP

76.9

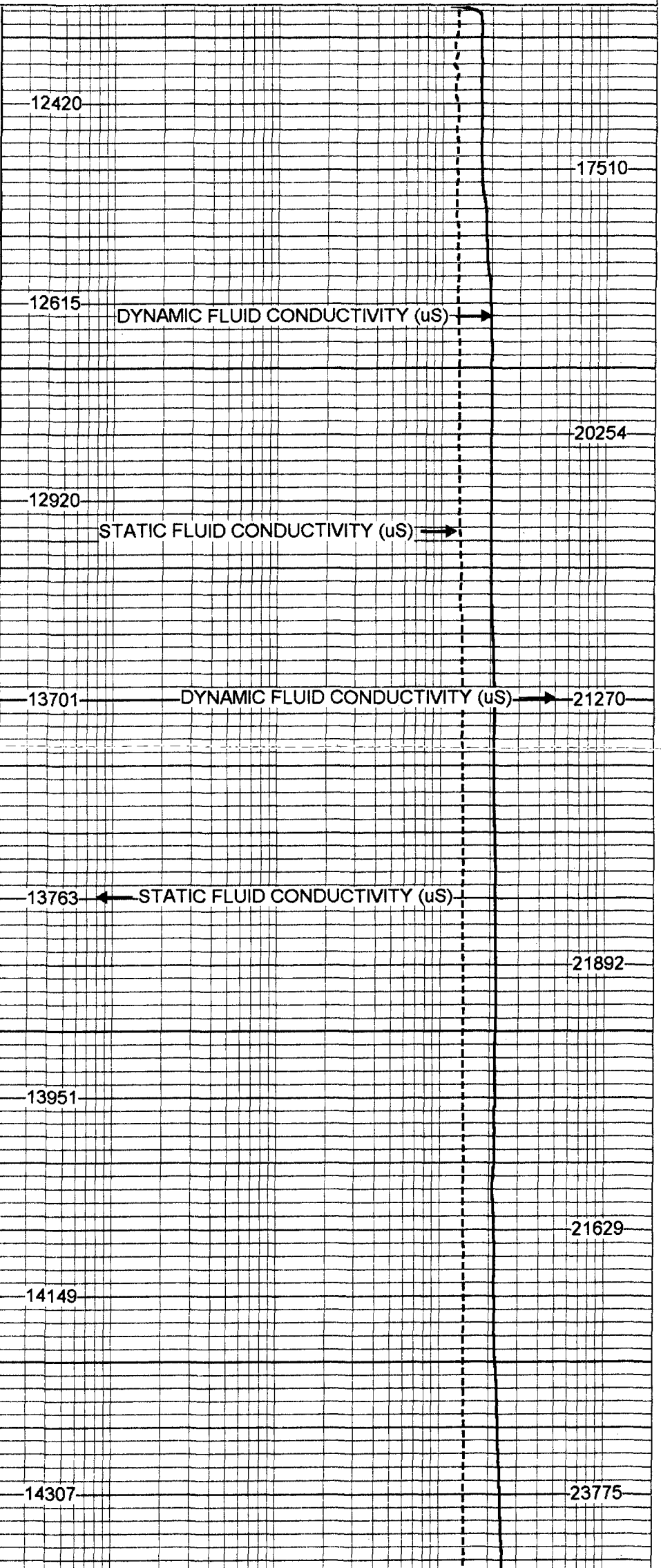
79.6

77.0

1300

76.7

78.5



12420

17510

12615

DYNAMIC FLUID CONDUCTIVITY (uS) →

20254

12920

STATIC FLUID CONDUCTIVITY (uS) →

13701

DYNAMIC FLUID CONDUCTIVITY (uS) →

21270

13763

← STATIC FLUID CONDUCTIVITY (uS)

21892

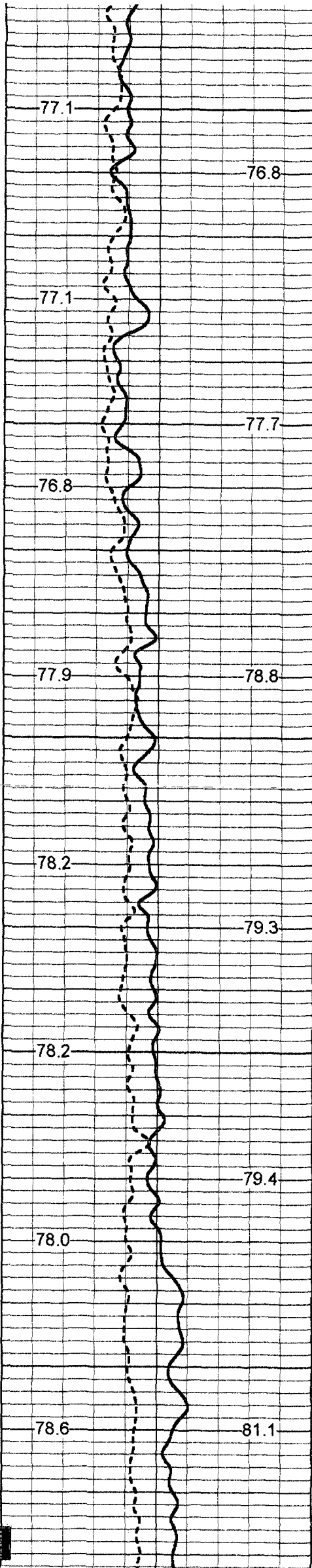
13951

21629

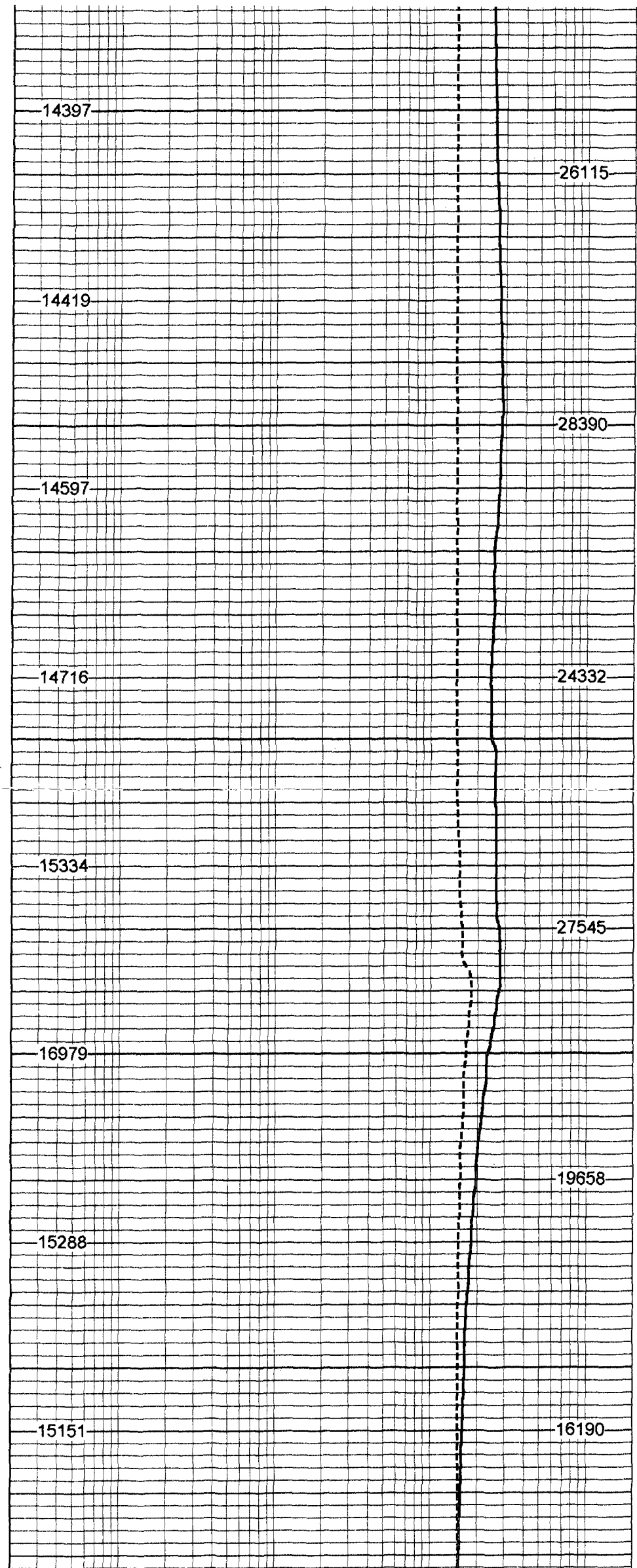
14149

14307

23775

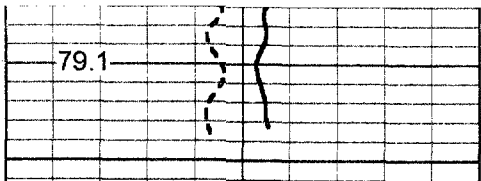


1350
1400
1450
1500
1550

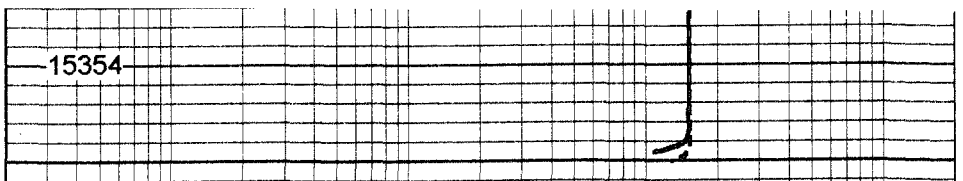


14397
14419
14597
14716
15334
16979
15288
15151

26115
28390
24332
27545
19658
16190

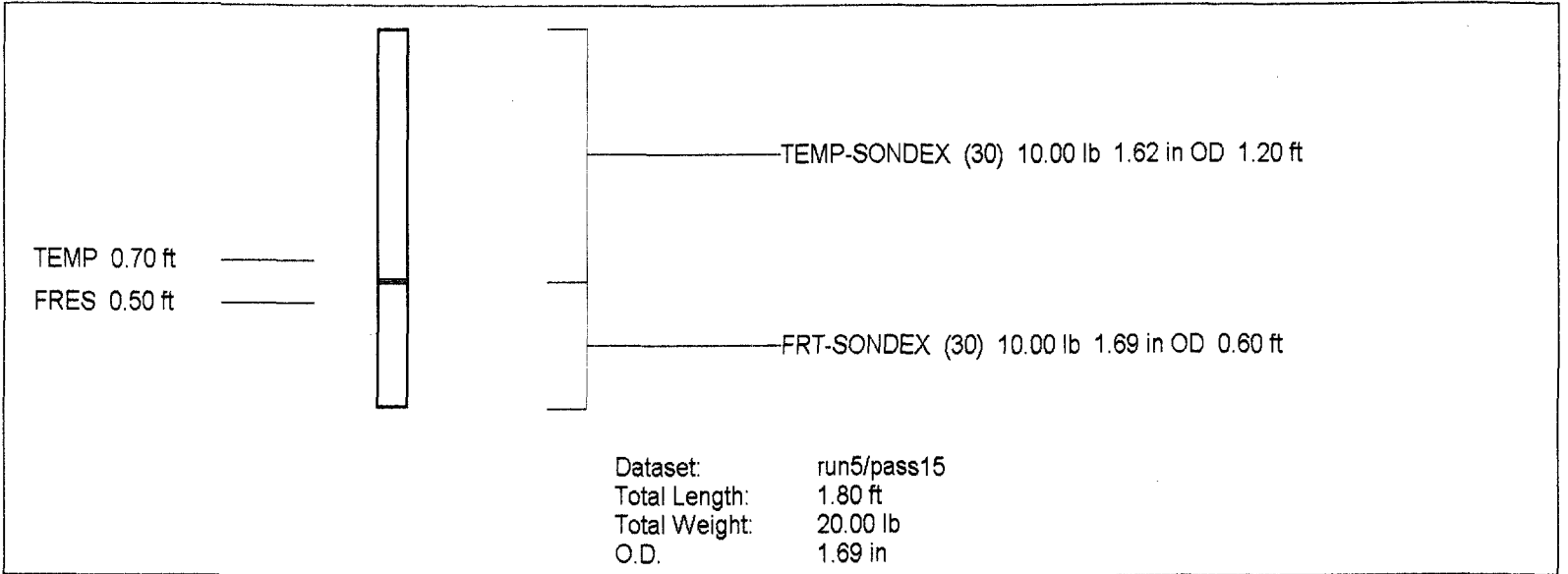


1600



70	DYNAMIC TEMP (degF)	90
70	STATIC TEMP (degF)	90

20	DYNAMIC FLUID CONDUCTIVITY (uS)	200000
20	STATIC FLUID CONDUCTIVITY (uS)	200000



FRT Calibration Report			
Serial Number:		30	
Tool Model:		SONDEX	
Performed:		Thu Apr 18 14:47:29 2002	
Point #	Reading		Reference
1	42.904	cps	1000.000
2	309.469	cps	10000.000
3	858.679	cps	25000.000
4	1742.780	cps	50000.000
5	3177.680	cps	70000.000
6		cps	

Temperature Calibration Report				
Serial Number:		30		
Tool Model:		SONDEX		
Performed:		Thu Apr 18 13:26:57 2002		
Point #	Reading		Reference	
1	109.698	cps	34	degF
2	681.903	cps	150	degF
3		cps		degF