



YOUNGQUIST BROTHERS, Inc
GEOPHYSICAL LOGGING DIVISION

HIGH RESOLUTION TEMPERATURE LOG

Company CITY OF IMMOKALEE
Well IW-1
Field IMMOKALEE W.W.T.P
County COLLIER
State FL

Company CITY OF IMMOKALEE
Well IW-1
Field IMMOKALEE W.W.T.P
County COLLIER
State FL

RECEIVED
DEPT SOUTH DISTRICT
JAN 10 11:05
FL

Permanent Datum	PAD	Elevation	
Log Measured From	PAD		
Drilling Measured From	PAD		
Location			

Date	NOV-20-06
Run Number	MIT
Depth Driller	3350'
Depth Logger	3238'
Bottom Logged Interval	3238'
Top Log Interval	SURFACE
Open Hole Size	12.25"
Type Fluid	WATER
Density / Viscosity	N/A
Max. Recorded Temp.	85 F
Estimated Current Top	N/A
Time Well Ready	1000
Time Logger on Bottom	1030
Equipment Number	103
Location	FT MYERS
Recorded By	GOODWIN
Witnessed By	M. BLACK


Borehole Record		Borehole Record	
Run Number	Bit	From	To
ONE	12.25"	SURFACE	310'
TWO	42"	SURFACE	279'
THREE	12.25"	CASING	1011'
SEVEN	28.5"	CASING	2005'

Borehole Record		Borehole Record	
Run Number	Bit	From	To
Casing Record	36"	Wgt/Ft	Bottom
Surface String	30"	375 W. T.	275'
Prod. String	22"	375 W. T.	930'
Production String	12.75"	500 W. T.	2000'
Liner			2986'

<<< Fold Here >>>

All interpretations are opinions based on inferences from electrical or other measurements and we cannot and do not guarantee the accuracy or correctness of any interpretation, and we shall not, except in the case of gross or willful negligence on our part, be liable or responsible for any loss, costs, damages, or expenses incurred or sustained by anyone resulting from any interpretation made by any of our officers, agents or employees. These interpretations are also subject to our general terms and conditions set out in our current Price Schedule.

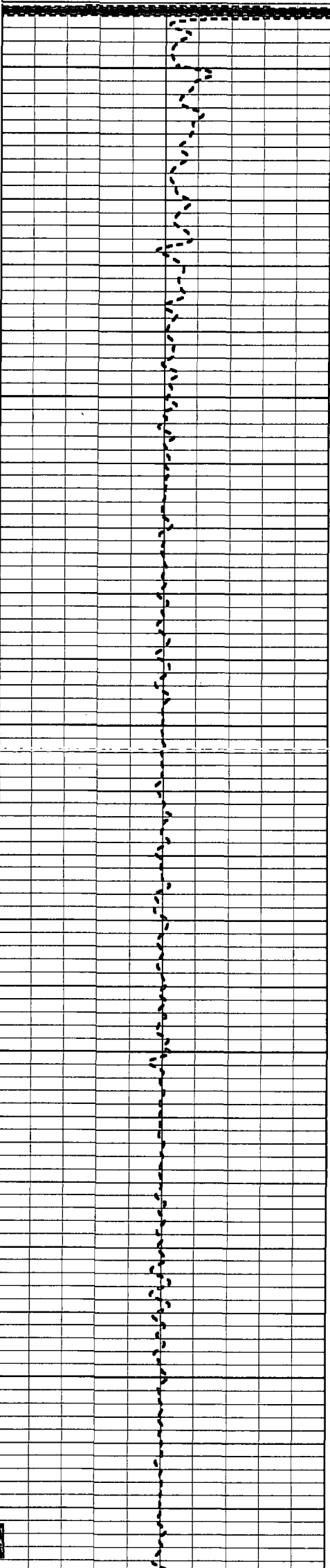
Comments



YOUNGQUIST BROTHERS, Inc
GEOPHYSICAL LOGGING DIVISION

TEMPERATURE

Database File: imok06.db
Dataset Pathname: pass1
Presentation Format: temp
Dataset Creation: Mon Nov 20 10:07:09 2006 by Log 6.2_B4
Charted by: Depth in Feet scaled 1:240



0

66.5

71.8

75.0

50

76.3

76.6

100

76.6

76.7

76.5

150

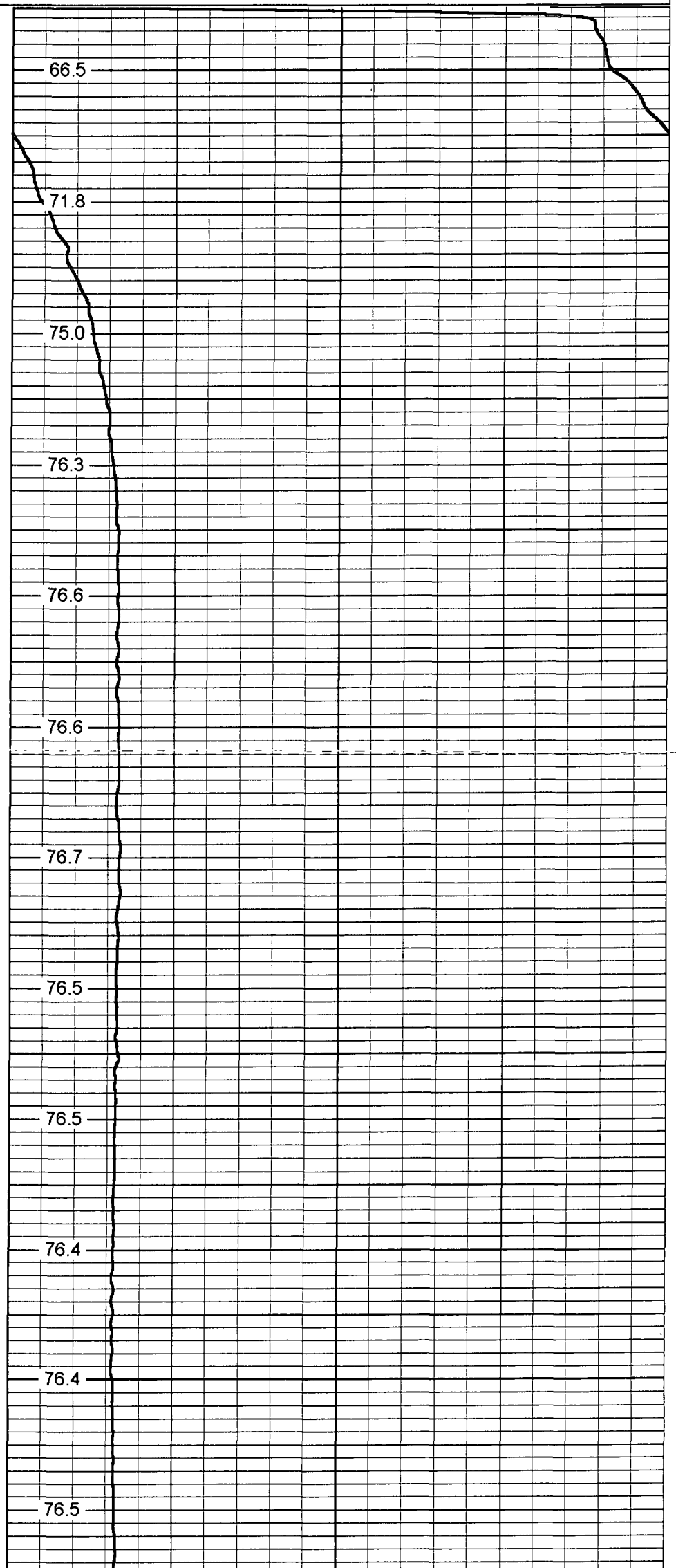
76.5

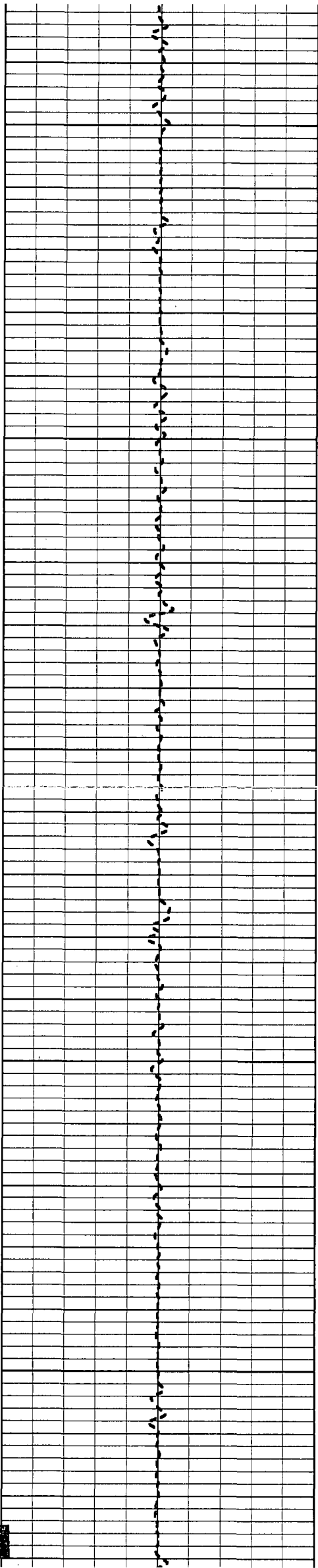
76.4

200

76.4

76.5





250

300

350

400

450

76.5

76.7

76.5

76.8

76.8

76.9

77.0

77.3

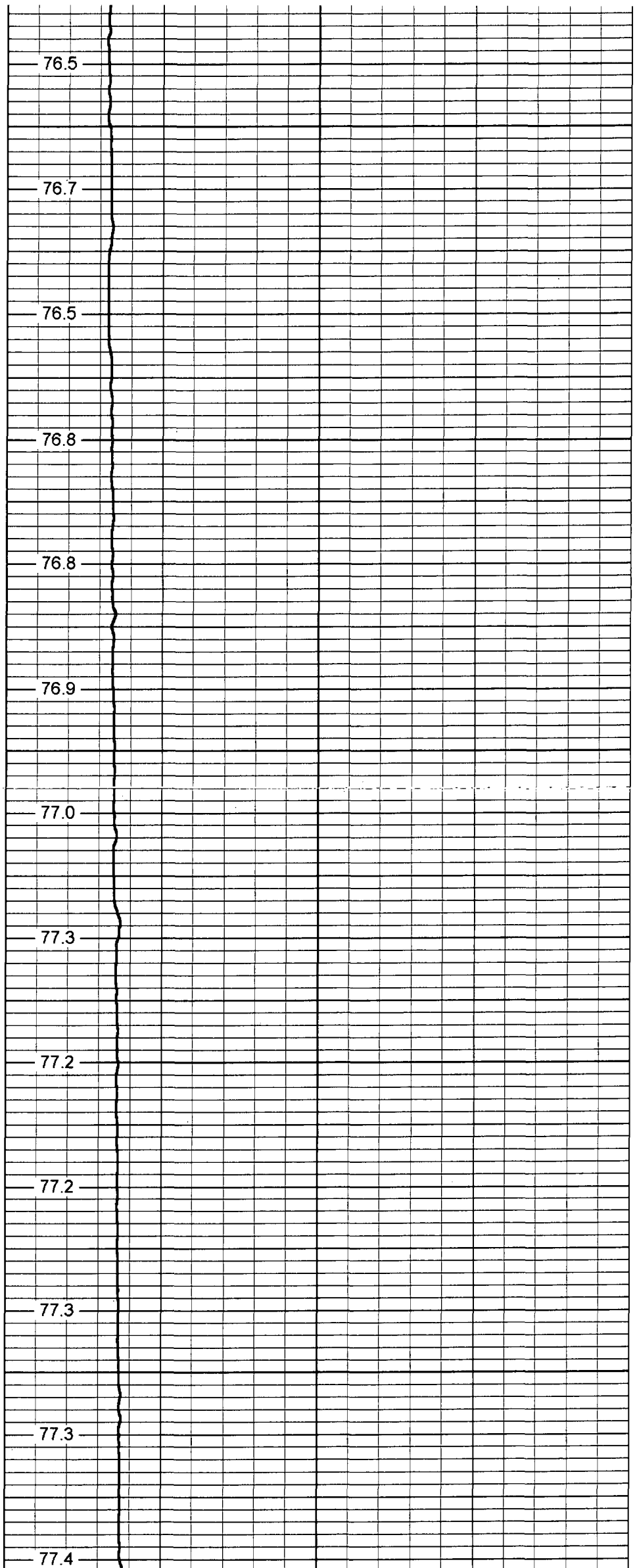
77.2

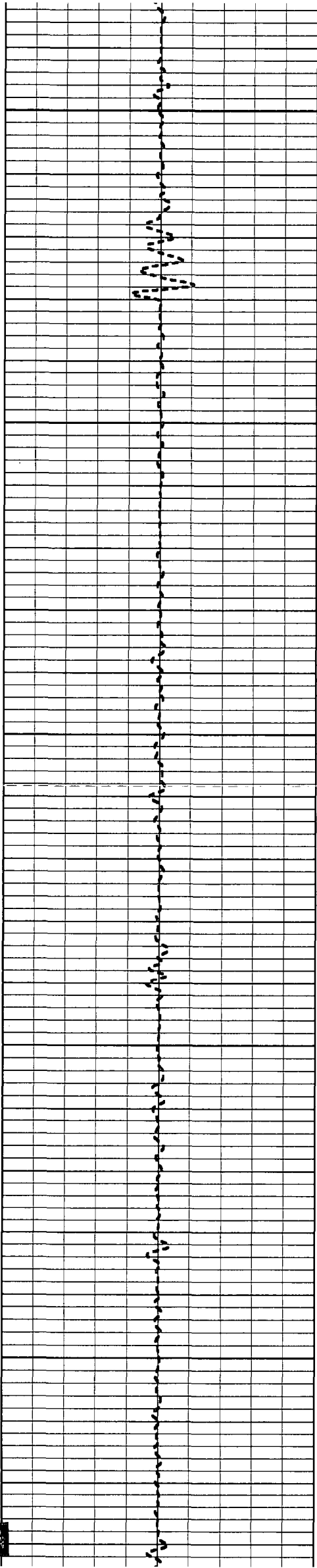
77.2

77.3

77.3

77.4





500

77.5

77.6

77.7

550

77.7

77.8

600

77.9

77.9

78.1

650

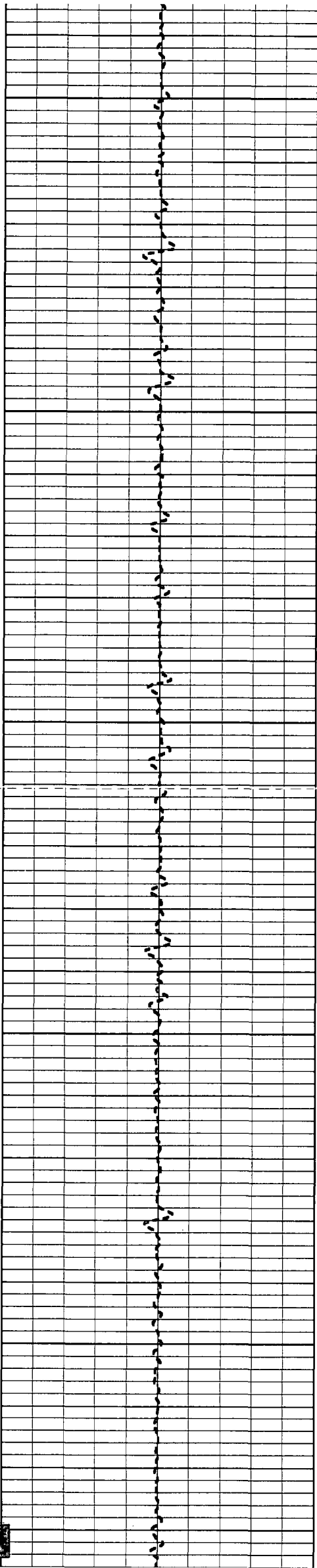
78.2

78.2

700

78.3

78.3



750

78.5

78.5

78.5

800

78.4

78.5

78.6

850

78.8

79.1

900

79.2

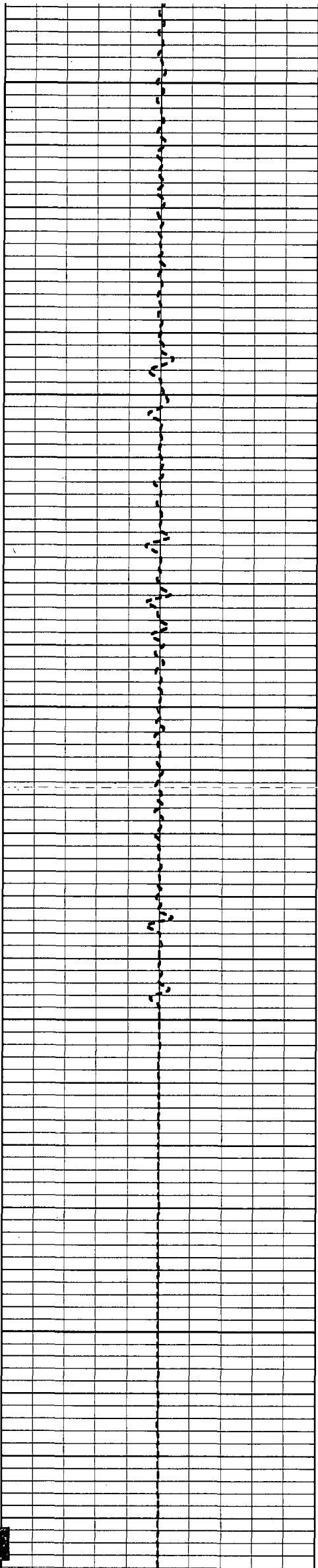
79.0

79.1

950

79.1

79.1



1000

79.1

79.2

79.2

1050

79.3

79.2

1100

79.2

79.3

79.3

1150

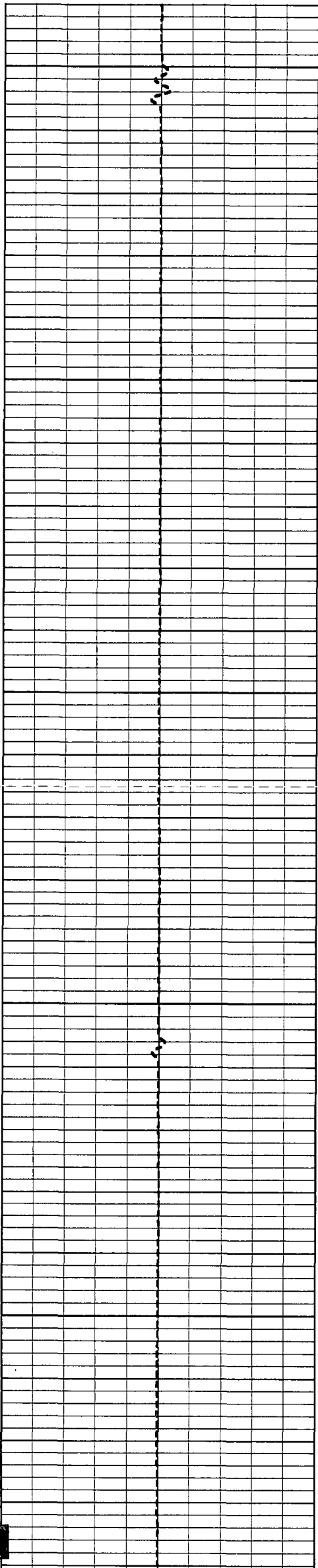
79.5

79.6

1200

79.6

79.7



1250

79.8

79.9

1300

80.0

80.1

80.2

1350

80.2

80.2

1400

80.3

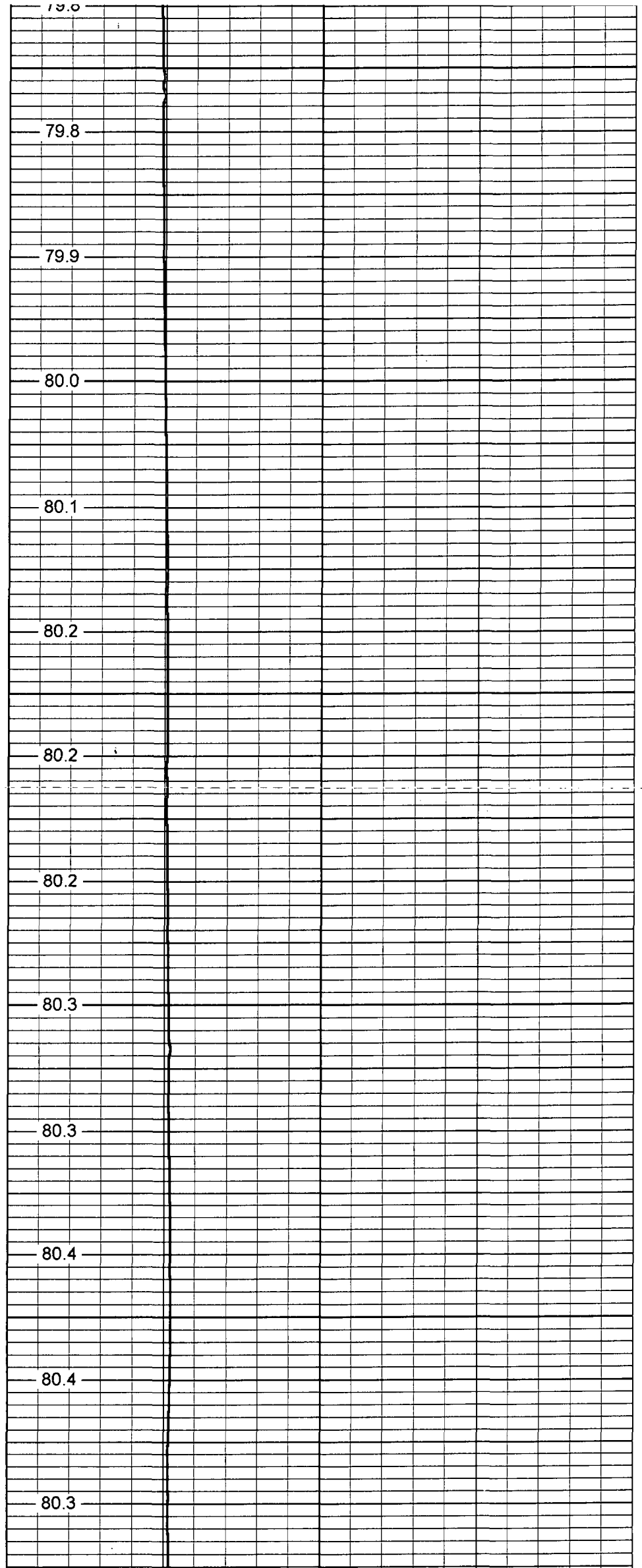
80.3

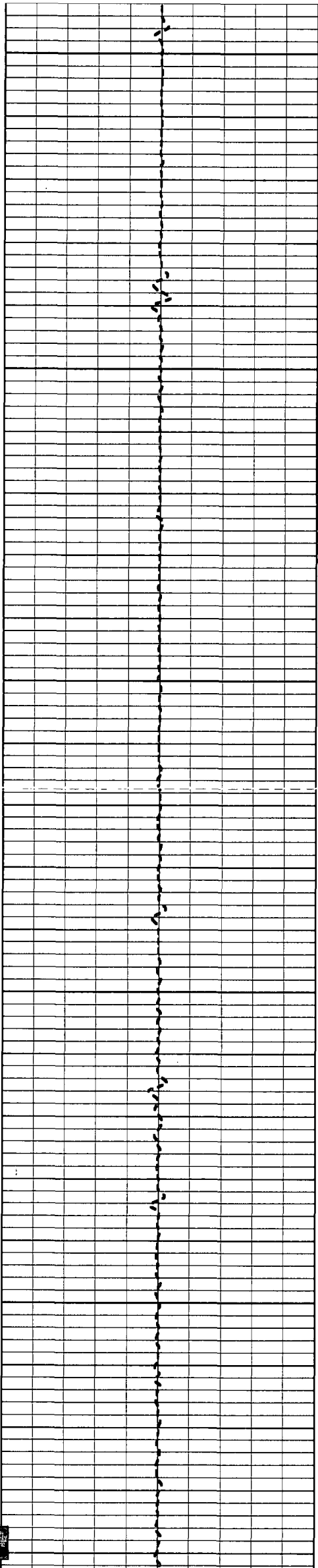
80.4

1450

80.4

80.3





1500

1550

1600

1650

1700

80.4

80.6

80.8

80.8

80.8

80.8

80.9

81.1

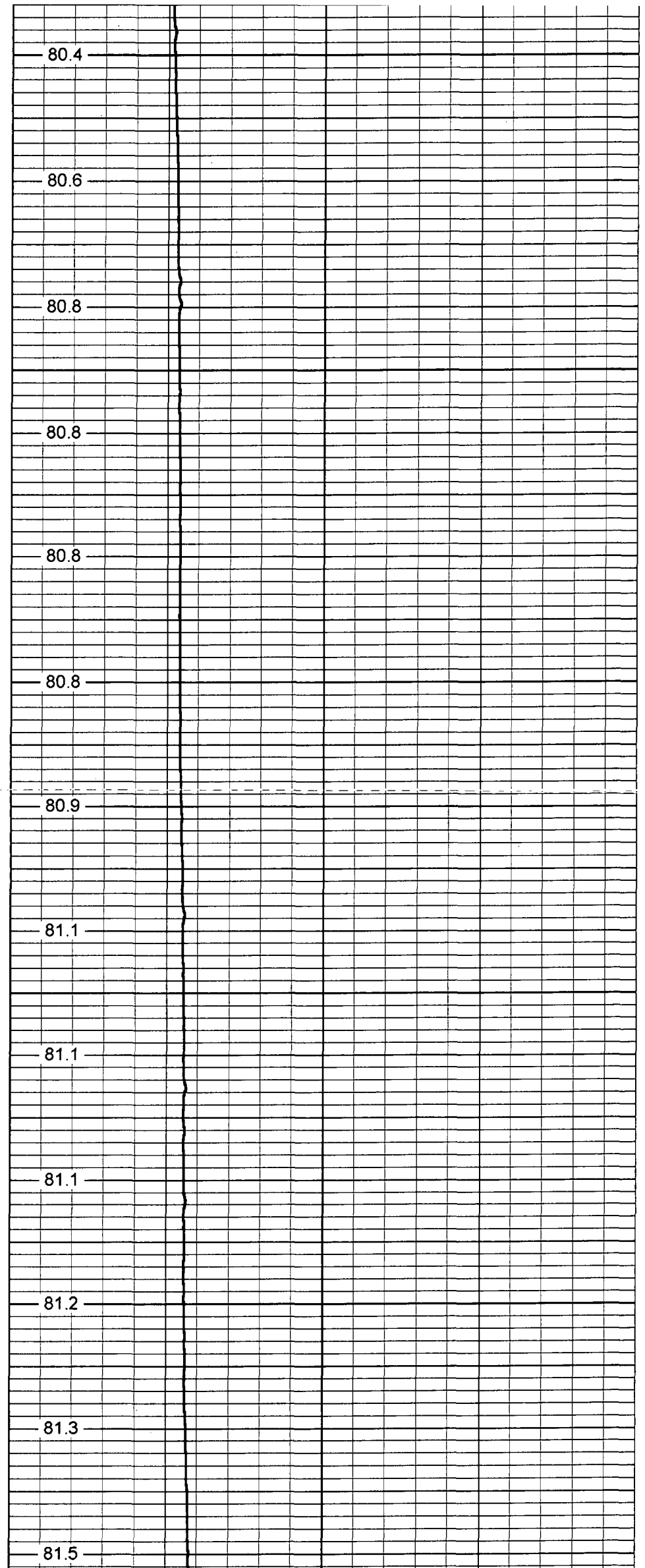
81.1

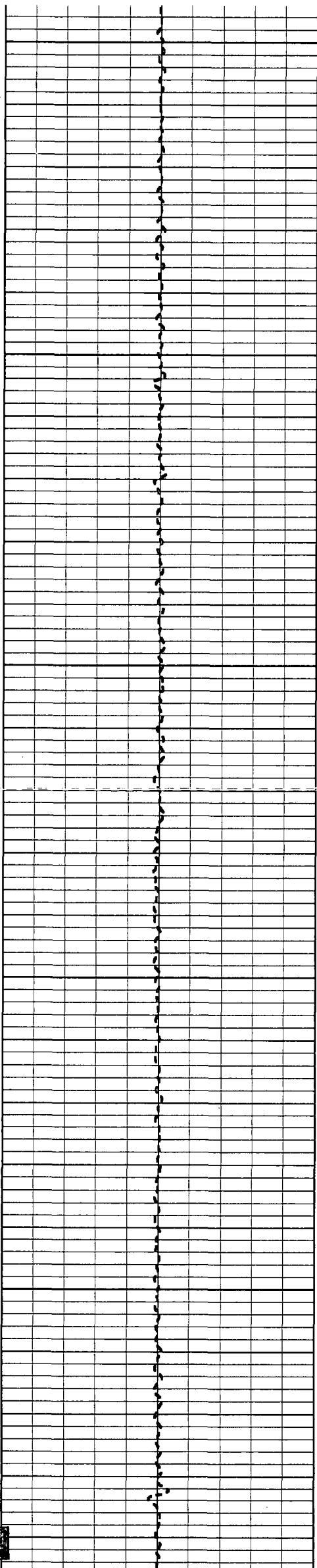
81.1

81.2

81.3

81.5





1750

81.6

81.6

1800

81.7

81.8

81.7

1850

82.2

82.3

1900

81.8

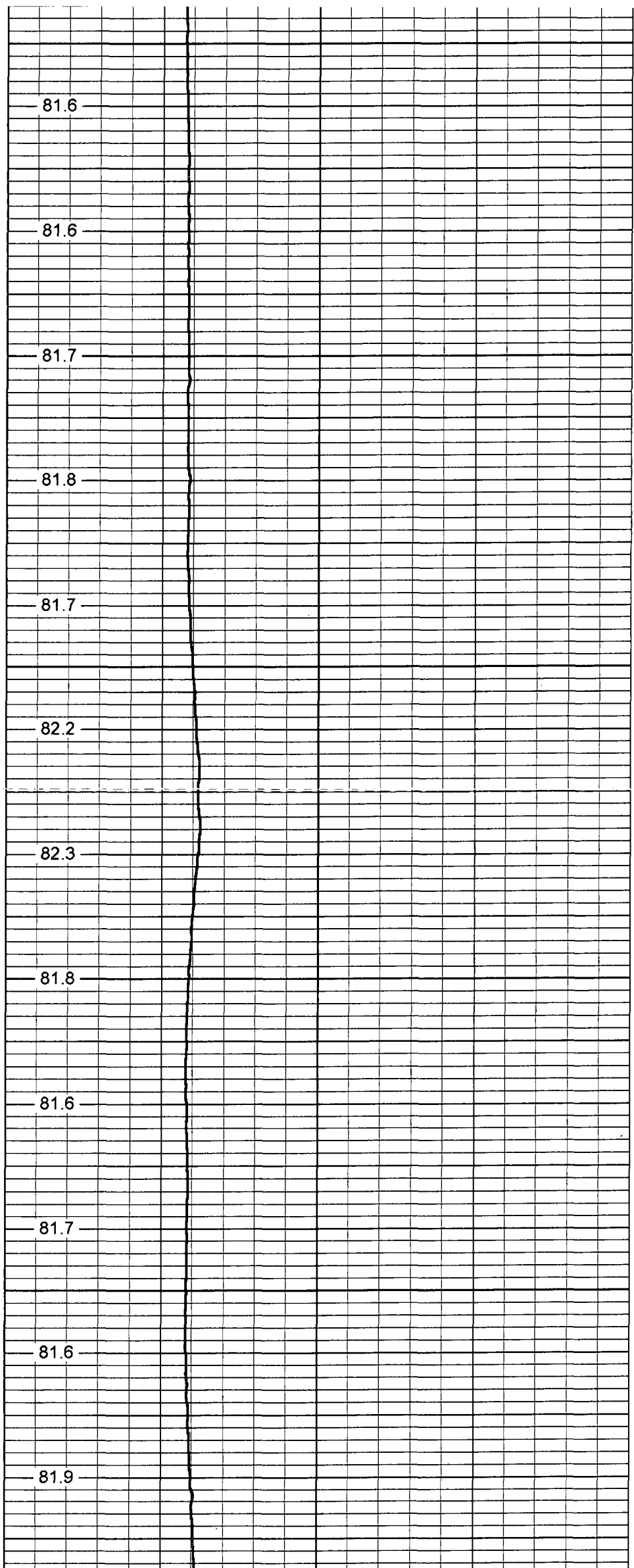
81.6

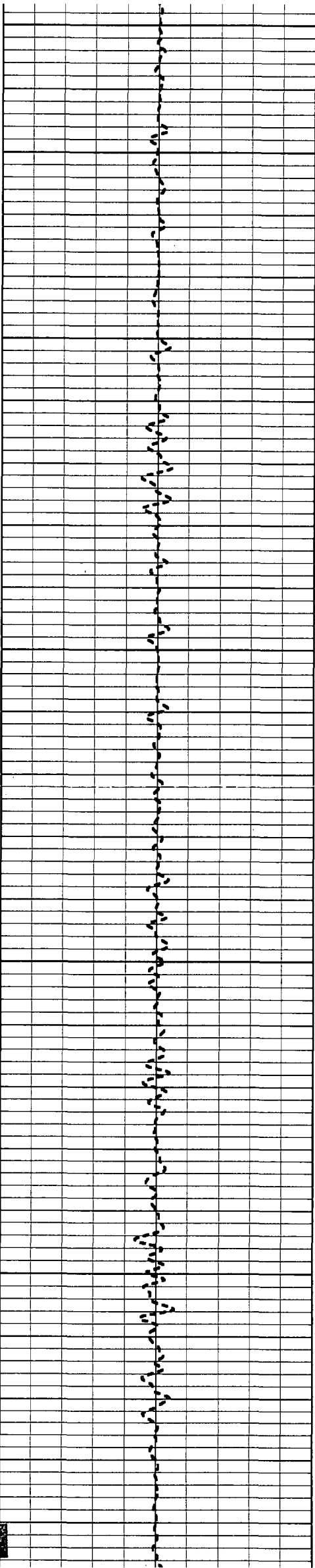
81.7

1950

81.6

81.9





2000

82.3

82.5

82.5

2050

82.5

82.5

2100

82.6

82.8

83.0

2150

83.3

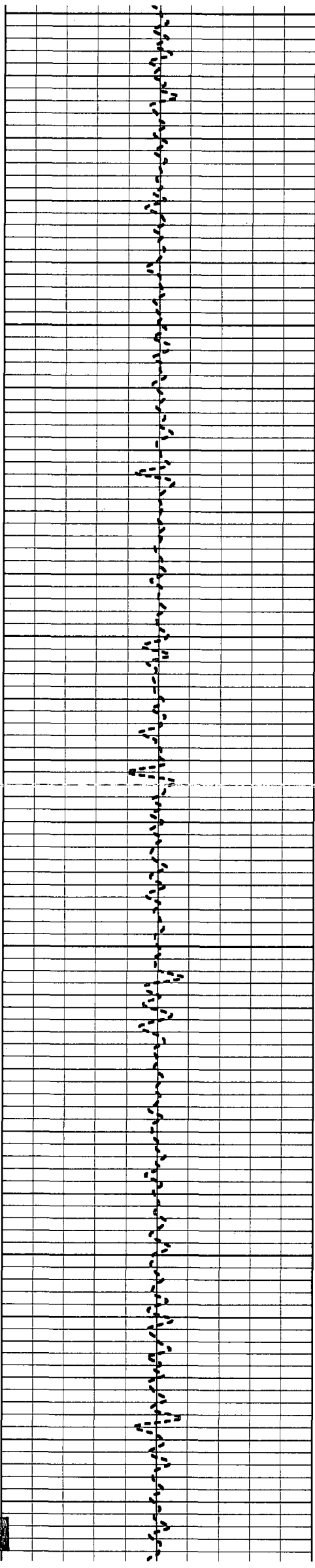
83.6

2200

83.5

83.3

83.4



2250

83.4

83.6

2300

83.4

84.0

84.5

2350

84.3

84.1

2400

83.9

83.8

83.7

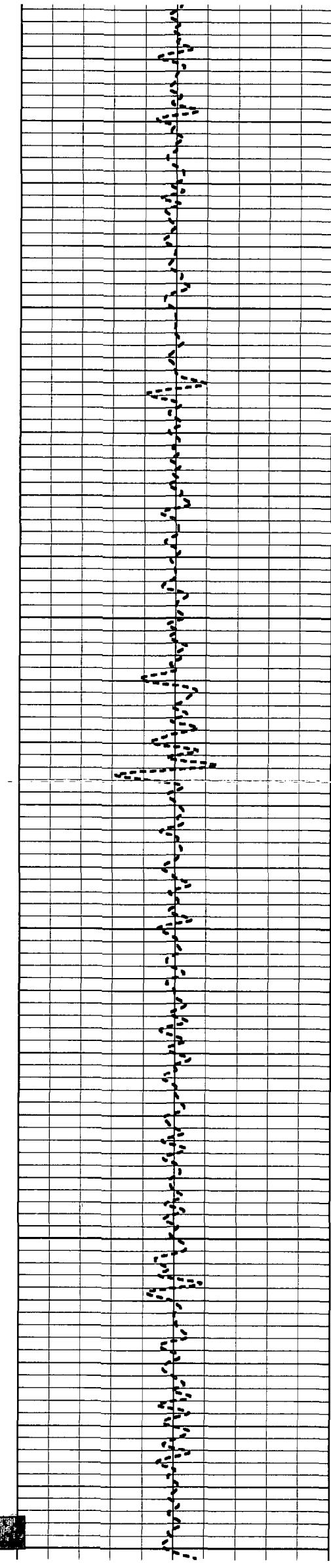
2450

83.9

84.3

2500

84.7



2550

2600

2650

2700

2750

84.9

84.2

84.0

84.1

84.2

84.5

84.5

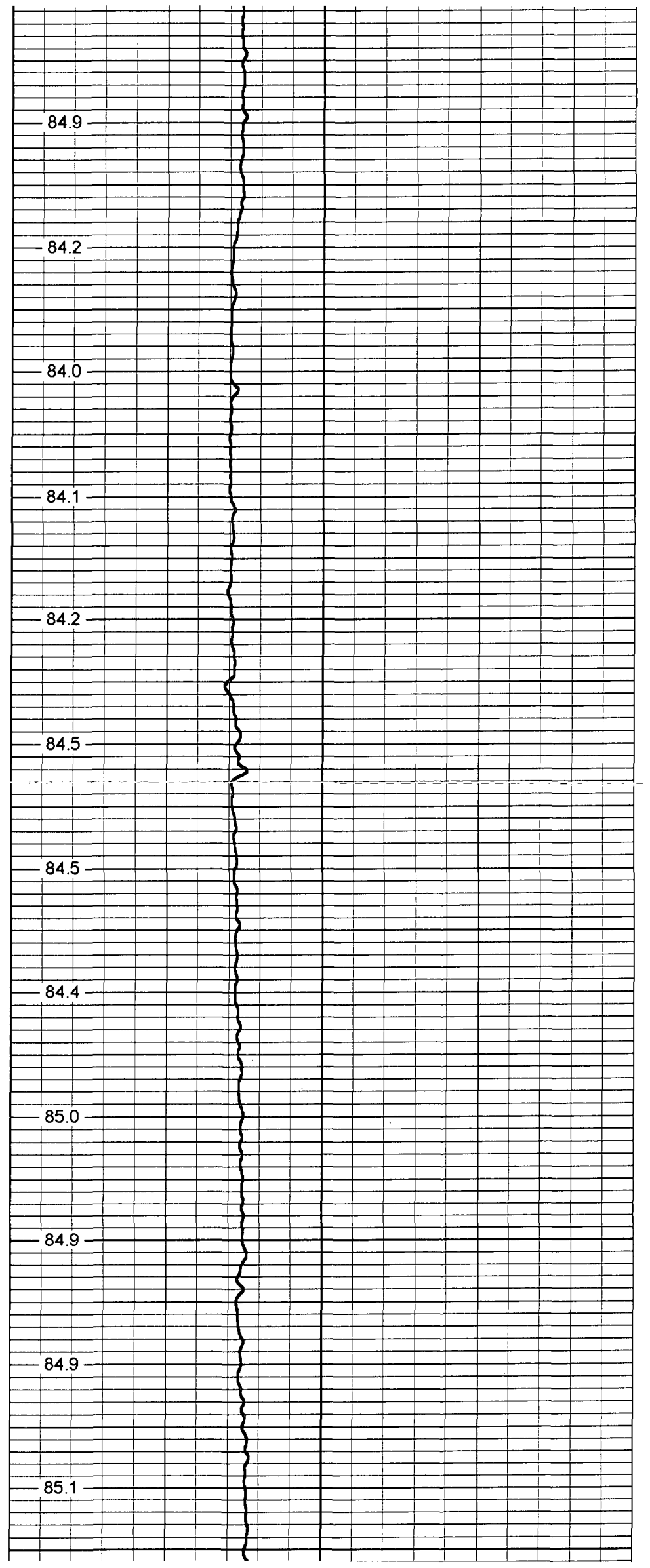
84.4

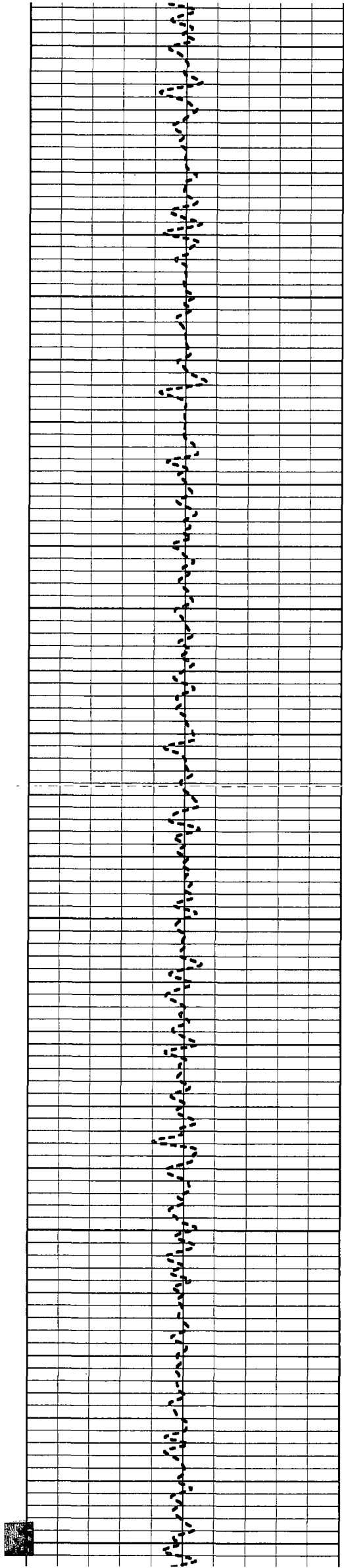
85.0

84.9

84.9

85.1





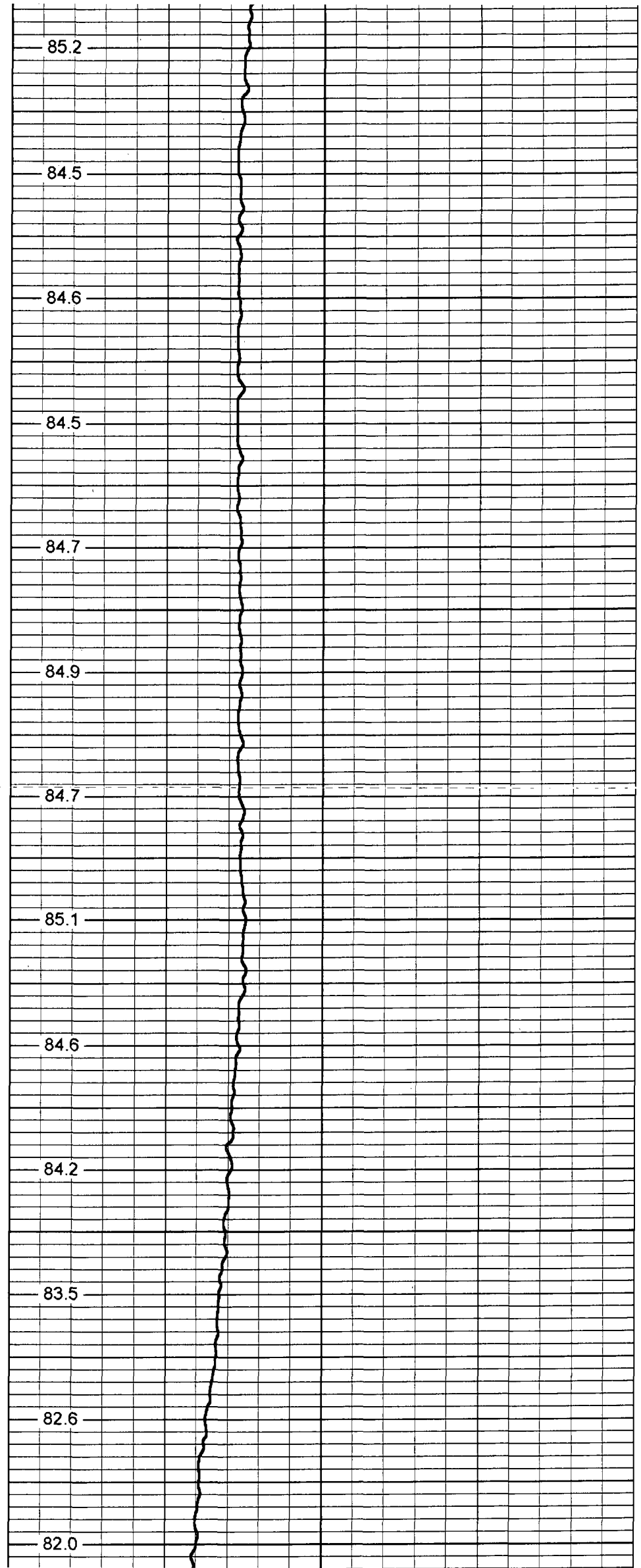
2800

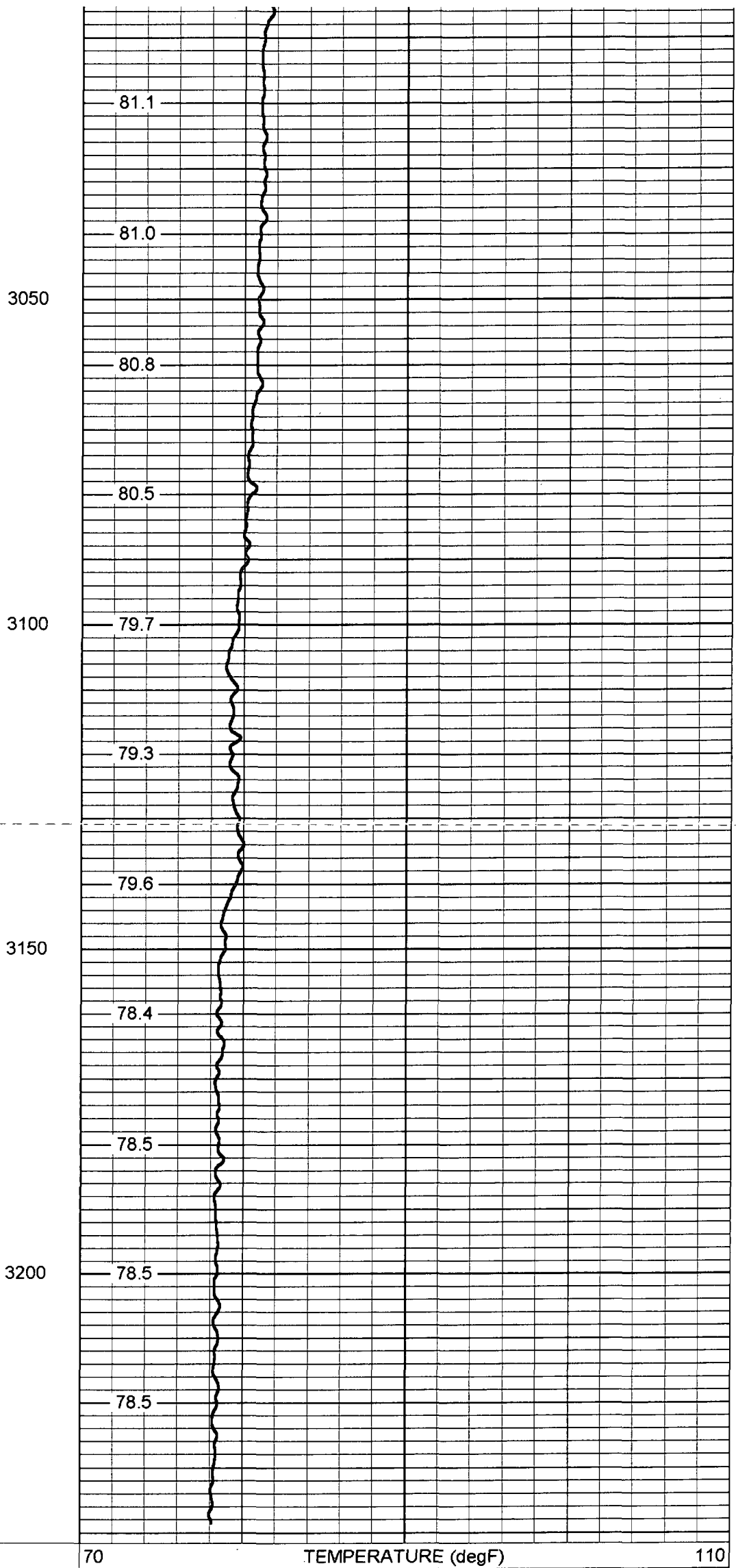
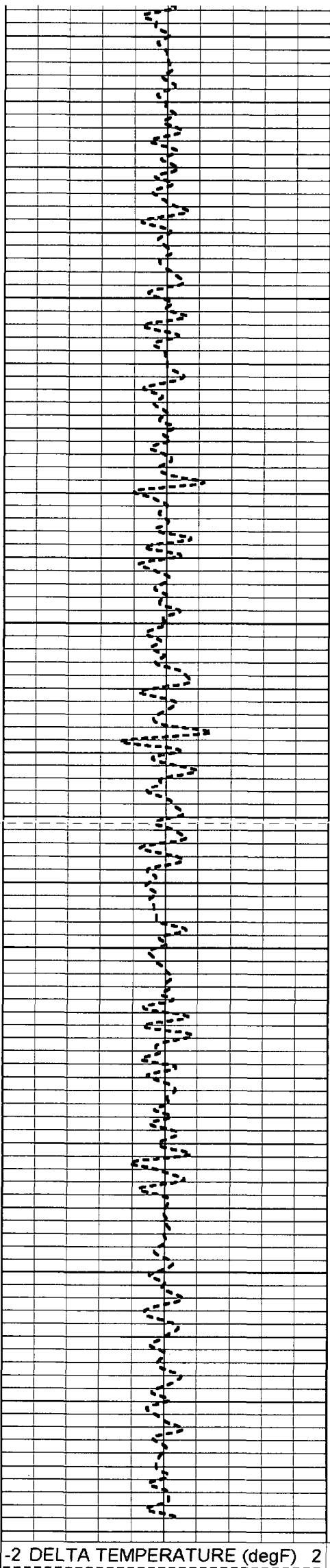
2850

2900

2950

3000



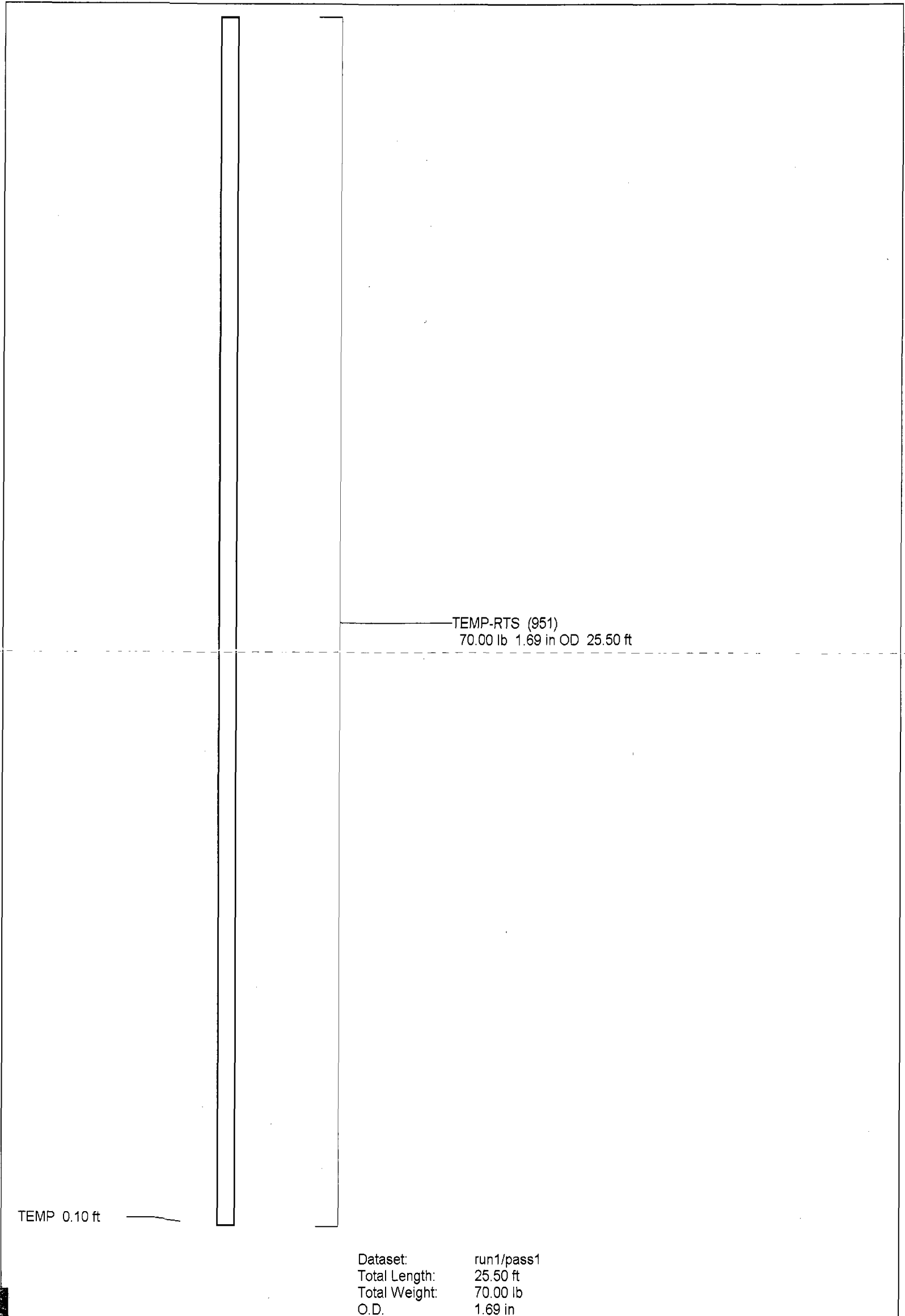


-2 DELTA TEMPERATURE (degF) 2

70

TEMPERATURE (degF)

110



TEMP-RTS (951)
70.00 lb 1.69 in OD 25.50 ft

TEMP 0.10 ft

Dataset:	run1/pass1
Total Length:	25.50 ft
Total Weight:	70.00 lb
O.D.	1.69 in

Temperature Calibration Report

Serial Number: 951
Tool Model: RTS
Performed: Thu Nov 17 15:10:25 2005

Point #	Reading		Reference	
1	410	cps	41	degF
2	810.2	cps	81	degF
3	1570.6	cps	157	degF