



FLUID CONDUCTIVITY TEMPERATURE LOG

Company CH2M HILL
 Well IMMOKALEE IW-1
 Field IMMOKALEE W.W.T.P.
 County COLLIER
 State/Prv FL

Company CH2M HILL
 Well IMMOKALEE IW-1
 Field IMMOKALEE W.W.T.P.
 County COLLIER State FL

Location	Permanent Datum	Elevation	Other Services
	Log Measured From		
Drilling Measured From		SEE COMMENTS	Elevation K.B. D.F. G.L.

Date	12-SEPT-2001
Run Number	THREE
Depth Driller	1011'
Depth Logger	1011'
Bottom Logged Interval	1011'
Top Log Interval	CASING
Open Hole Size	12.25"
Type Fluid	MUD
Density / Viscosity	N/A
Max. Recorded Temp.	N/A
Estimated Cement Top	N/A
Time Well Ready	0800
Time Logger on Bottom	0000
Equipment Number	102
Location	FT MYERS
Recorded By	FERGUSON
Witnessed By	T LEVI

Borehole Record		Borehole Record	
Run Number	Bit	Top	Bottom
ONE	12.25"	SURFACE	310'
TWO	4.2"	SURFACE	279'
THREE	12.25"	CASING	1011'

Borehole Record		Borehole Record	
Run Number	Bit	Top	Bottom
Casing Record	36"	Wgt/Ft	Bottom
Casing Record		375 W.T.	275'
Casing Record		SURFACE	
Casing Record			

All interpretations are opinions based on inferences from electrical or other measurements and we cannot and do not guarantee the accuracy or correctness of any interpretation, and we shall not, except in the case of gross or willful negligence on our part, be liable or responsible for any loss, costs, damages, or expenses incurred or sustained by anyone resulting from any interpretation made by any of our officers, agents or employees. These interpretations are also subject to our general terms and conditions set out in our current Price Schedule.

Comments

DIL/LL3/SP
 X-Y/GR
 BHC/SONIC/VDL



FCT

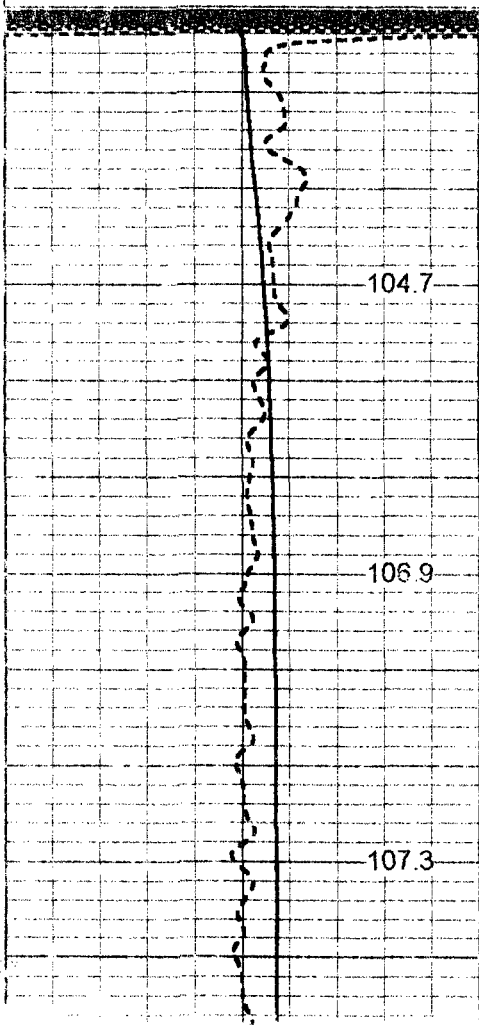
50 TEMPERATURE (degF) 150

20

STATIC FLUID CONDUCTIVITY (uS)

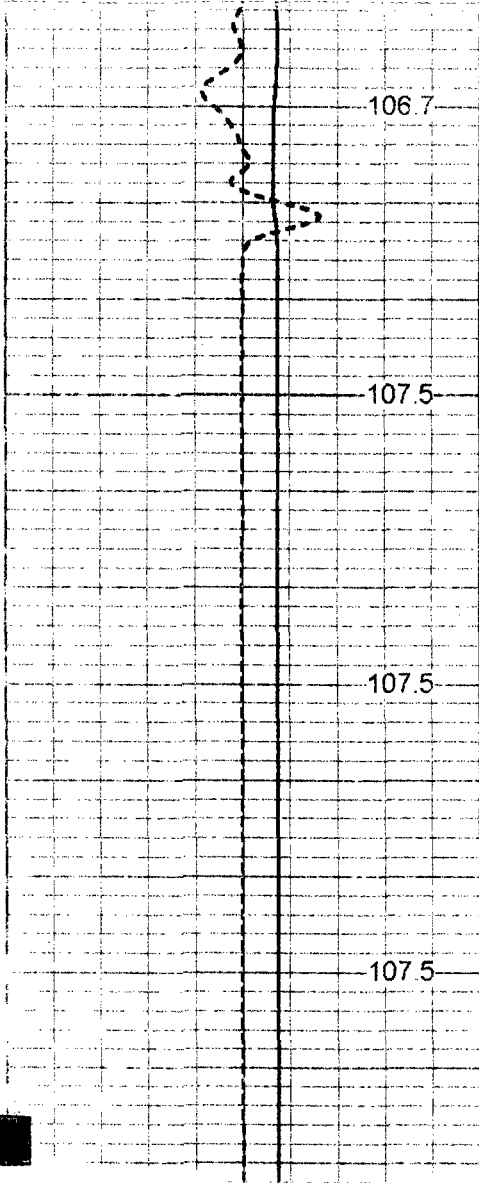
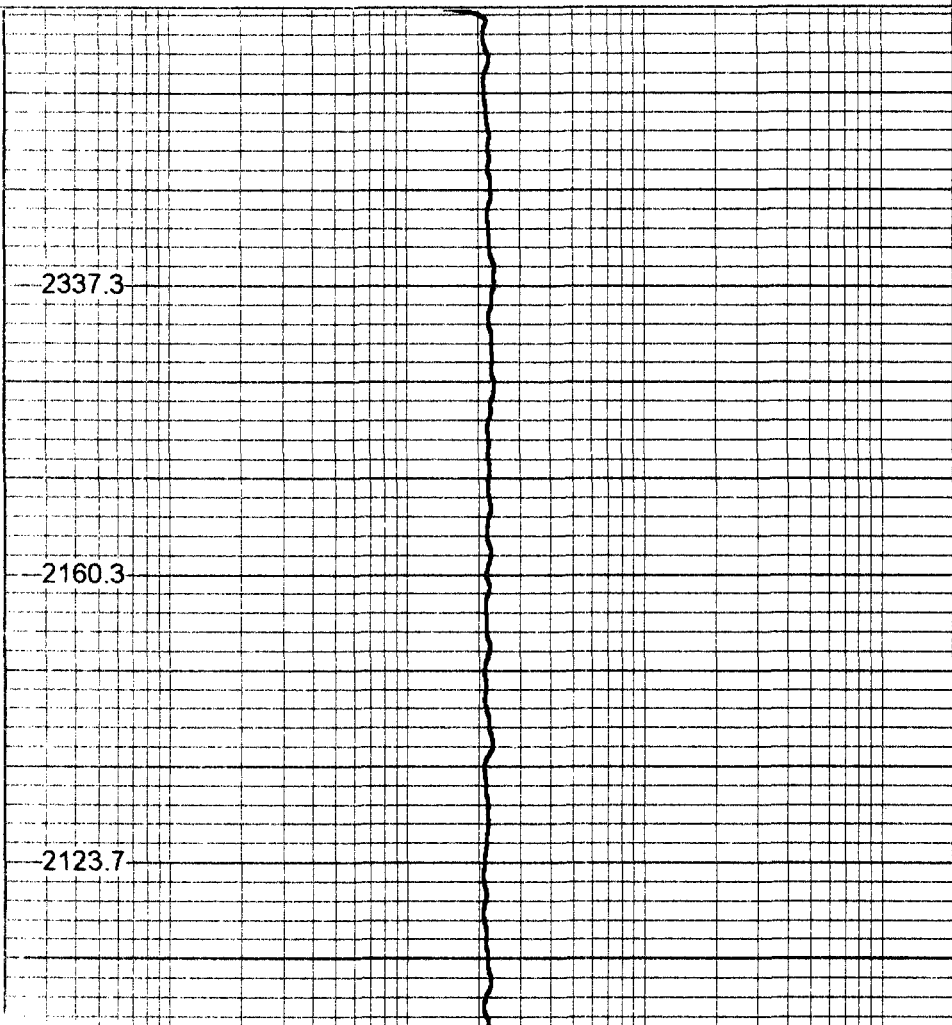
200000

-1 DELTA TEMP (degF) 1



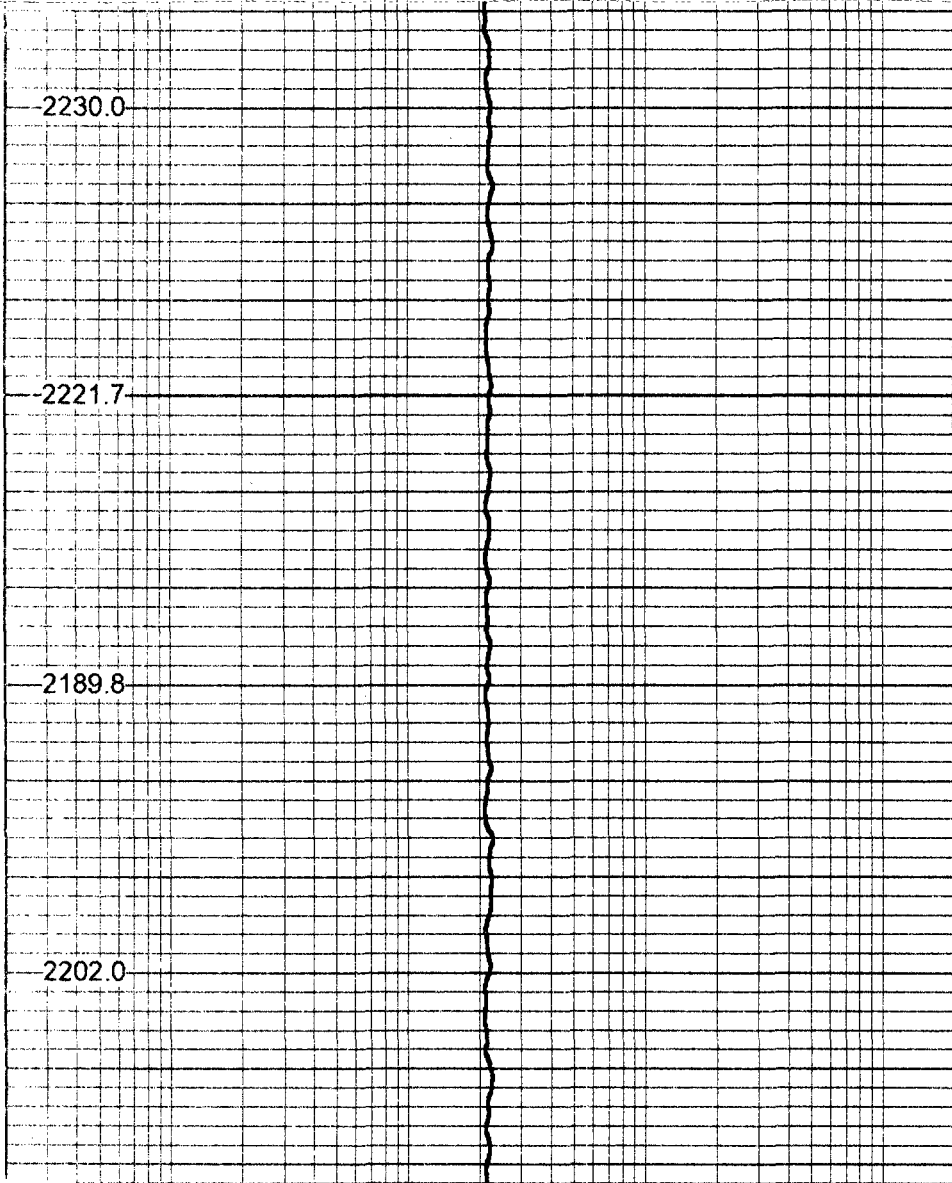
50

100

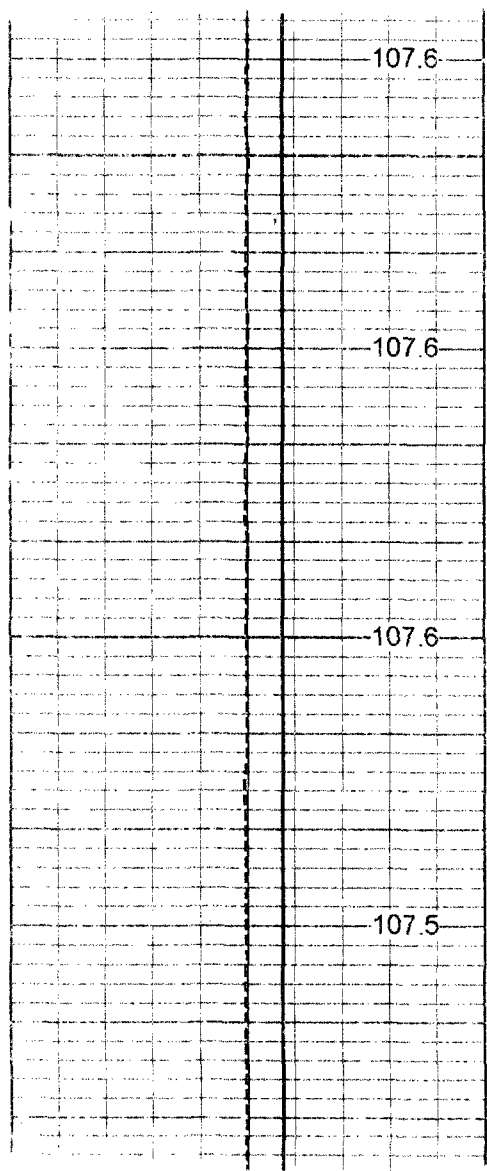


150

200



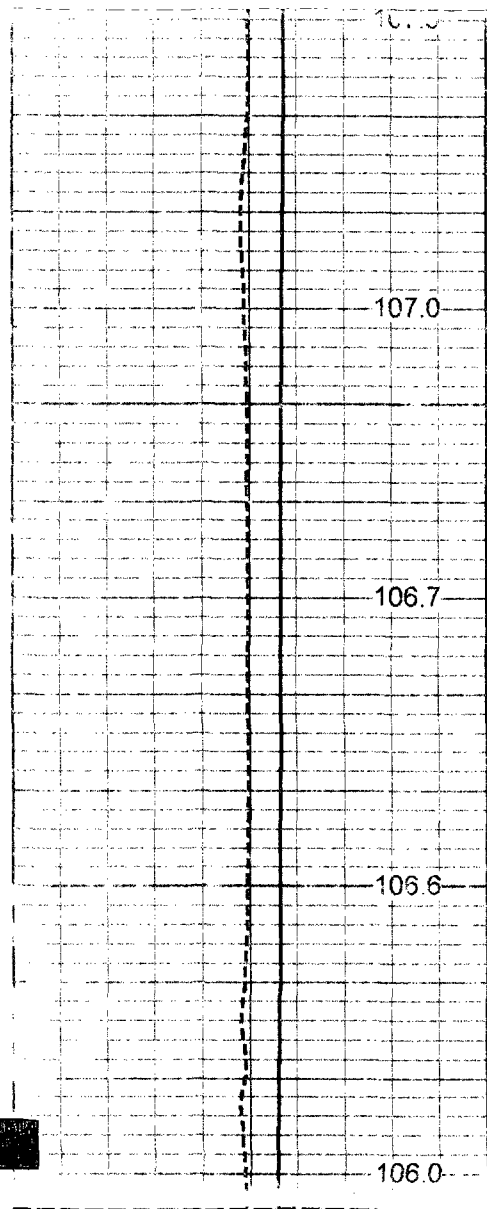
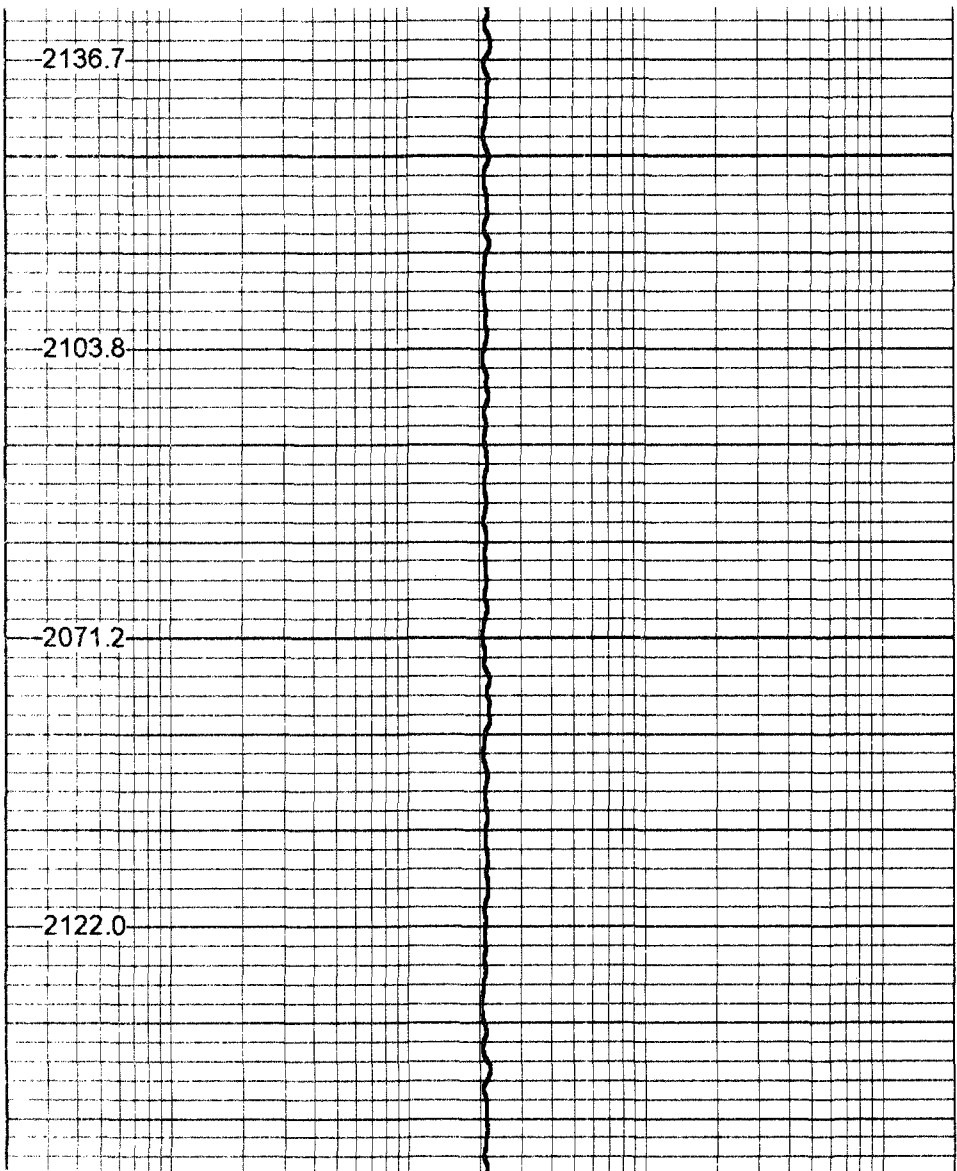
2202.0



250

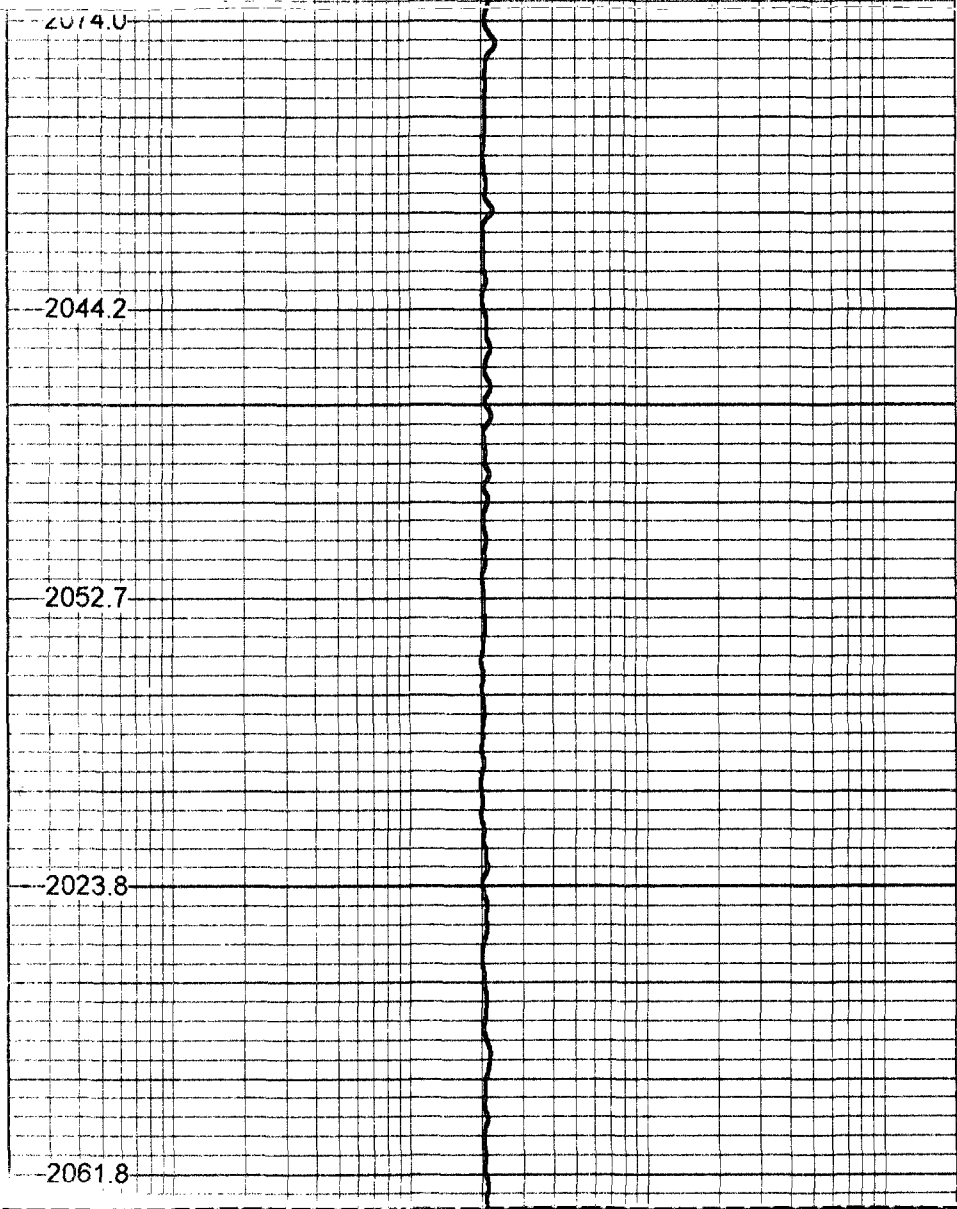
300

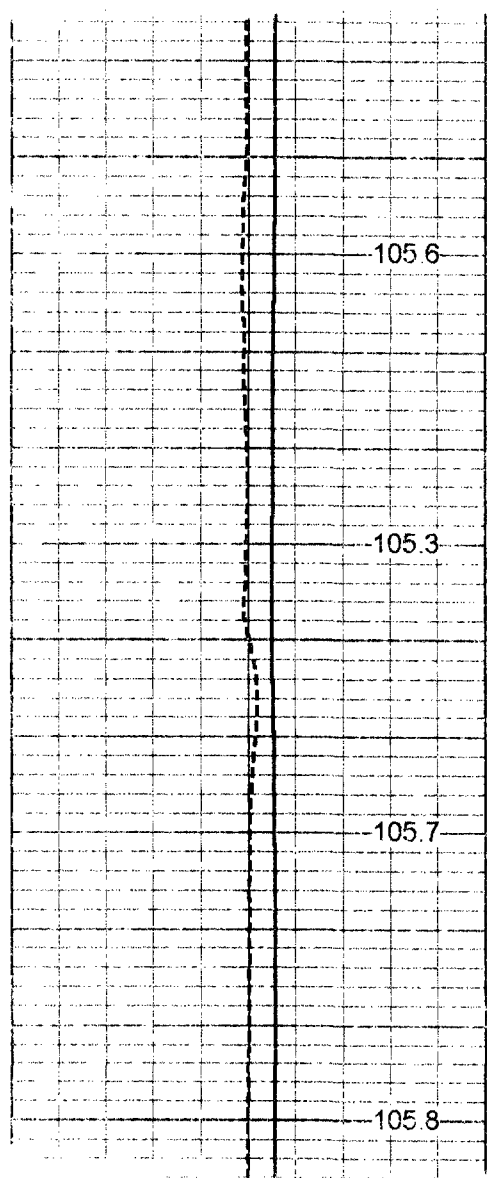
350



400

450

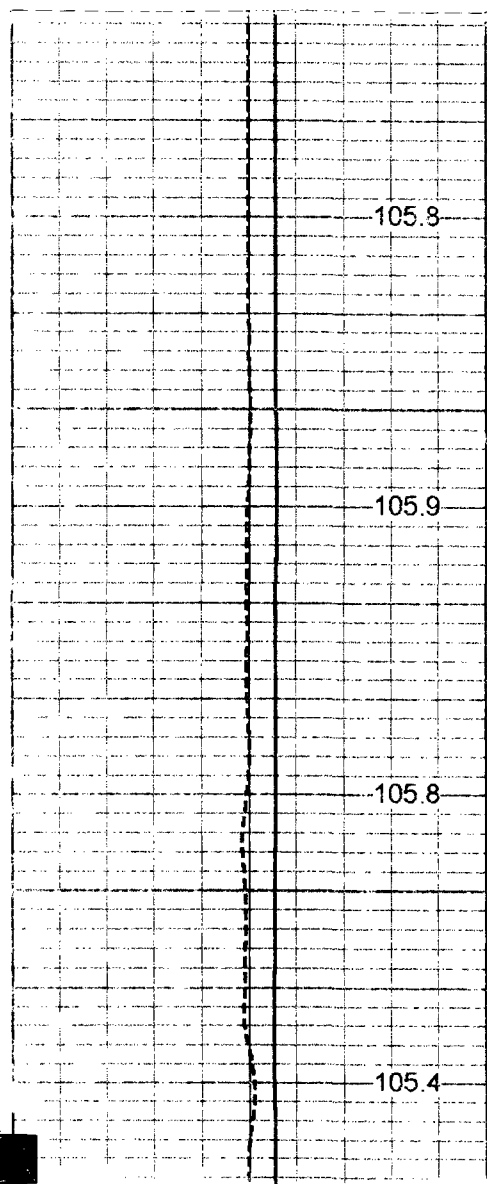
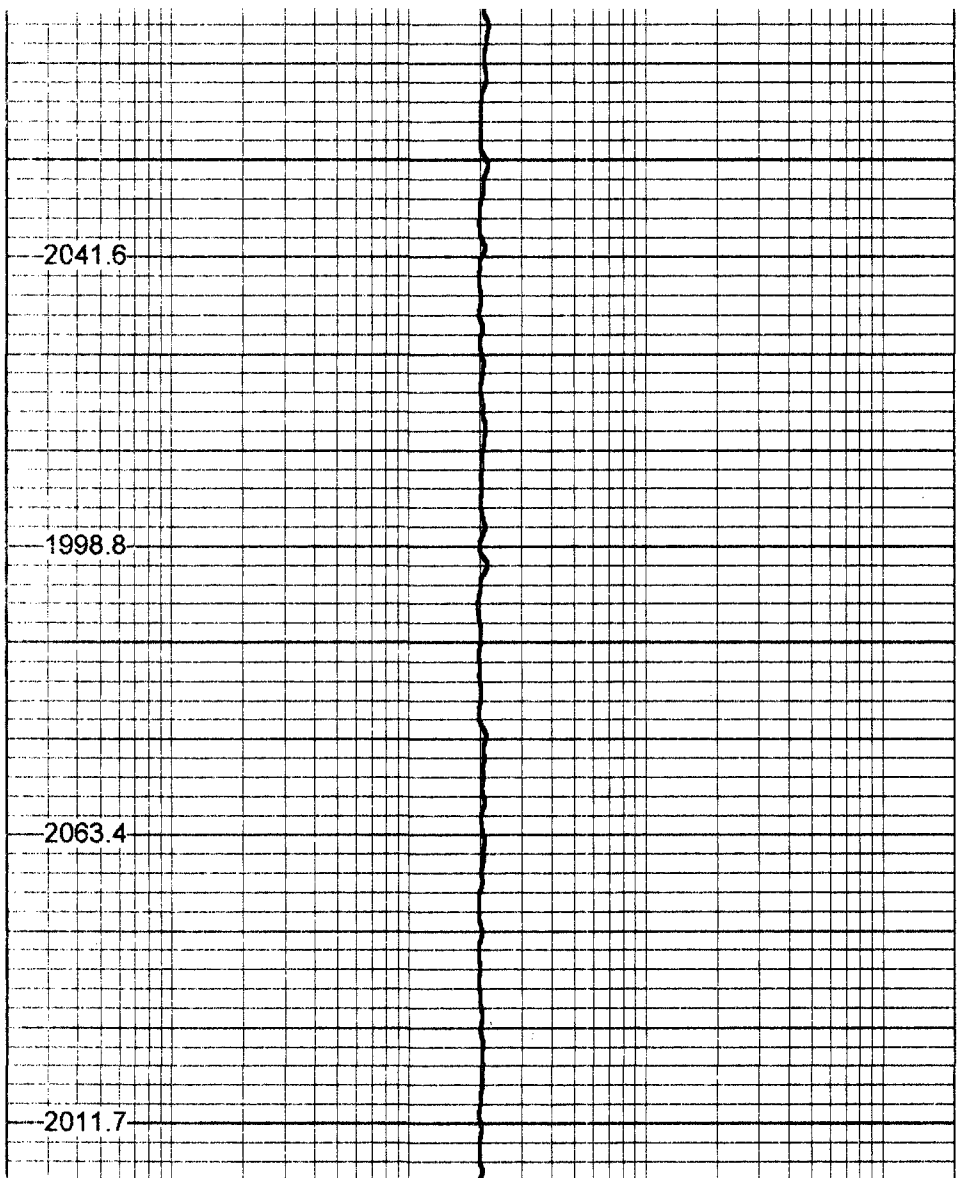




500

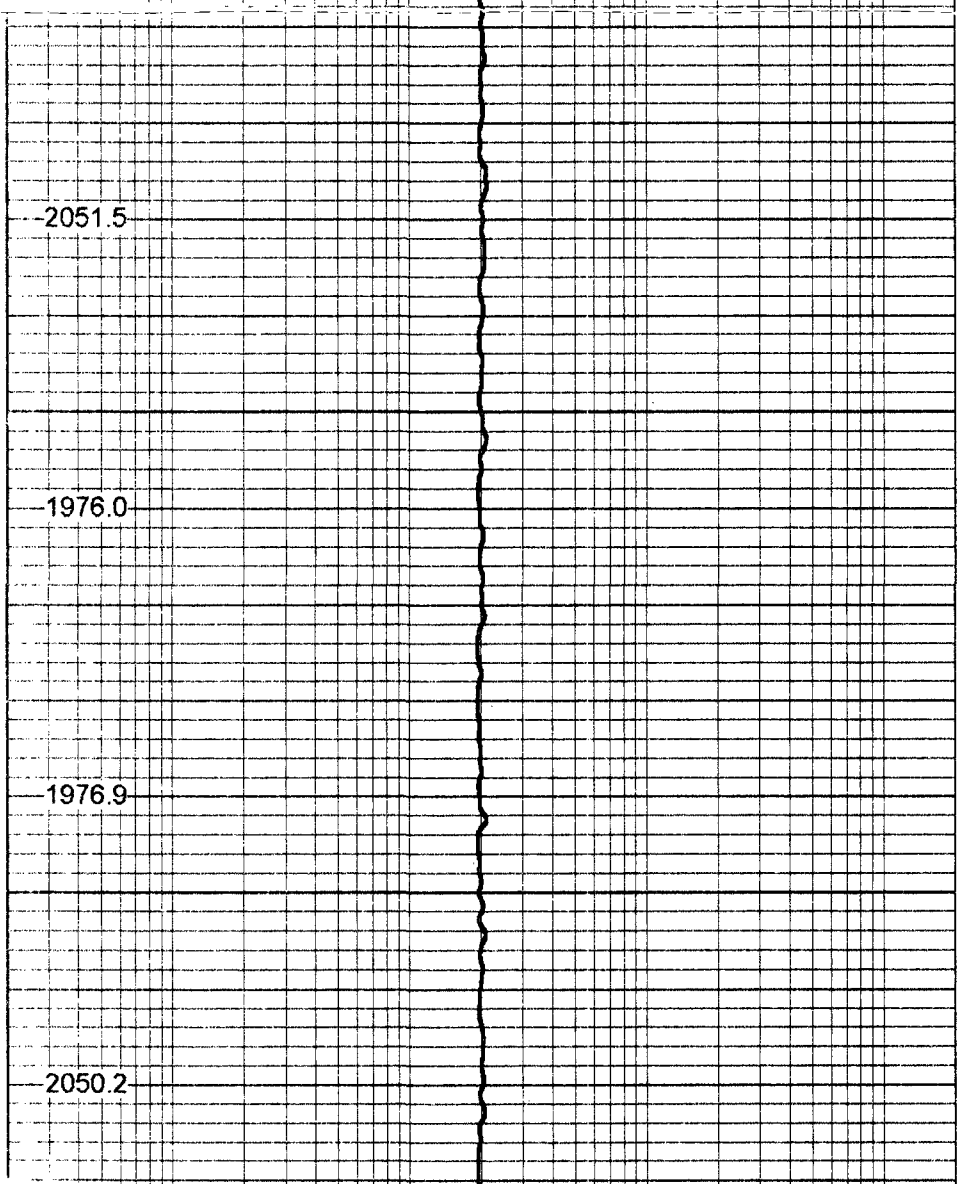
550

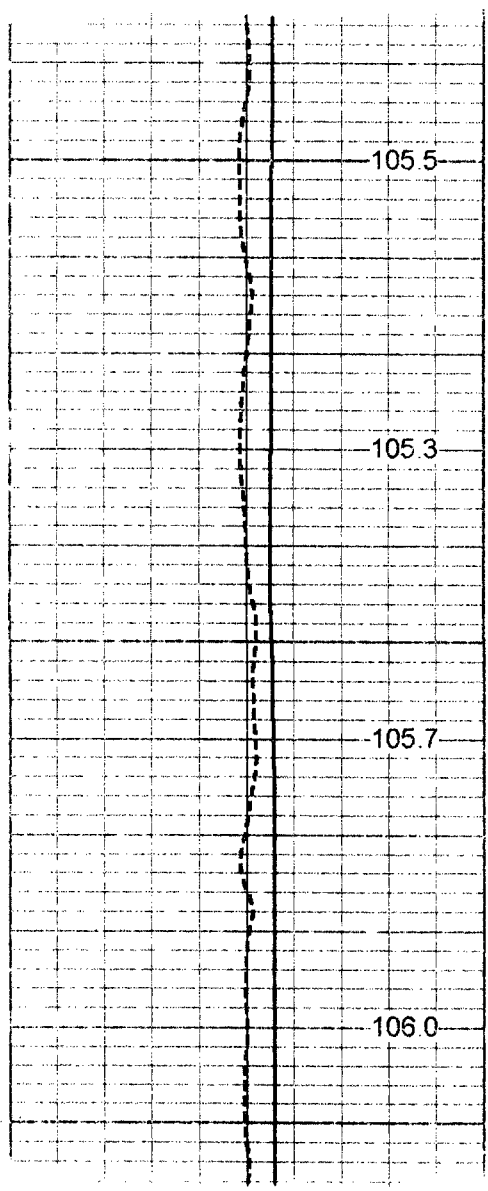
600



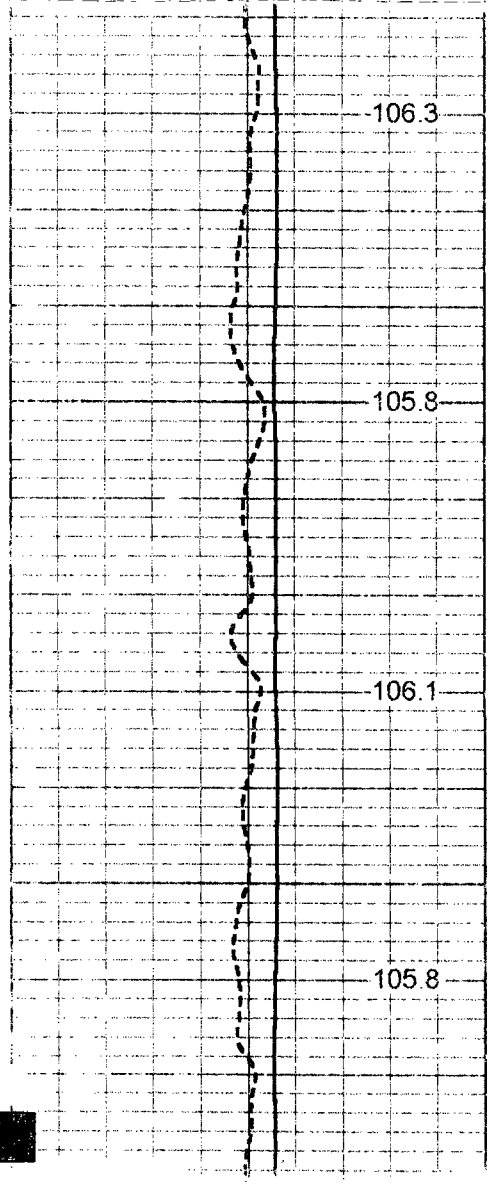
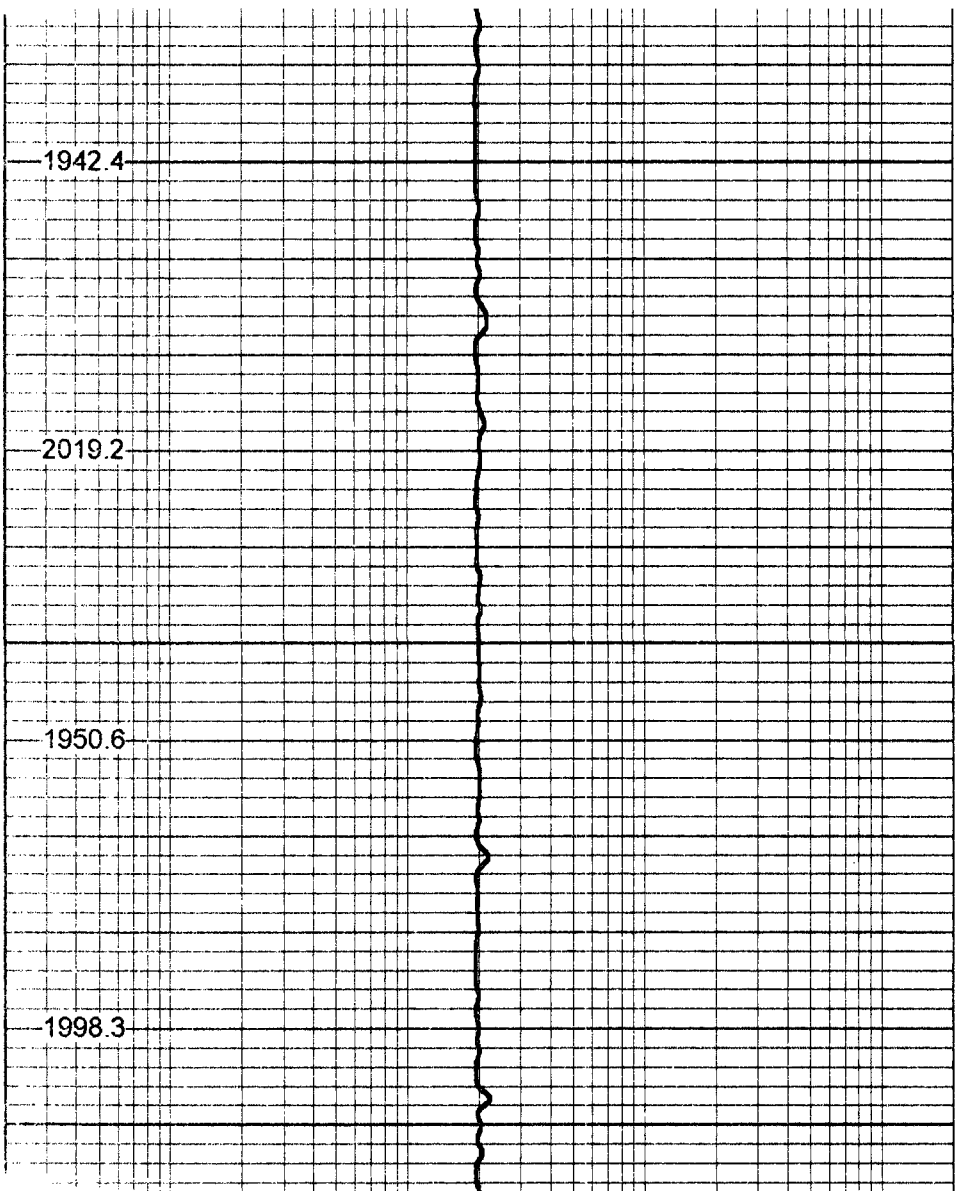
650

700

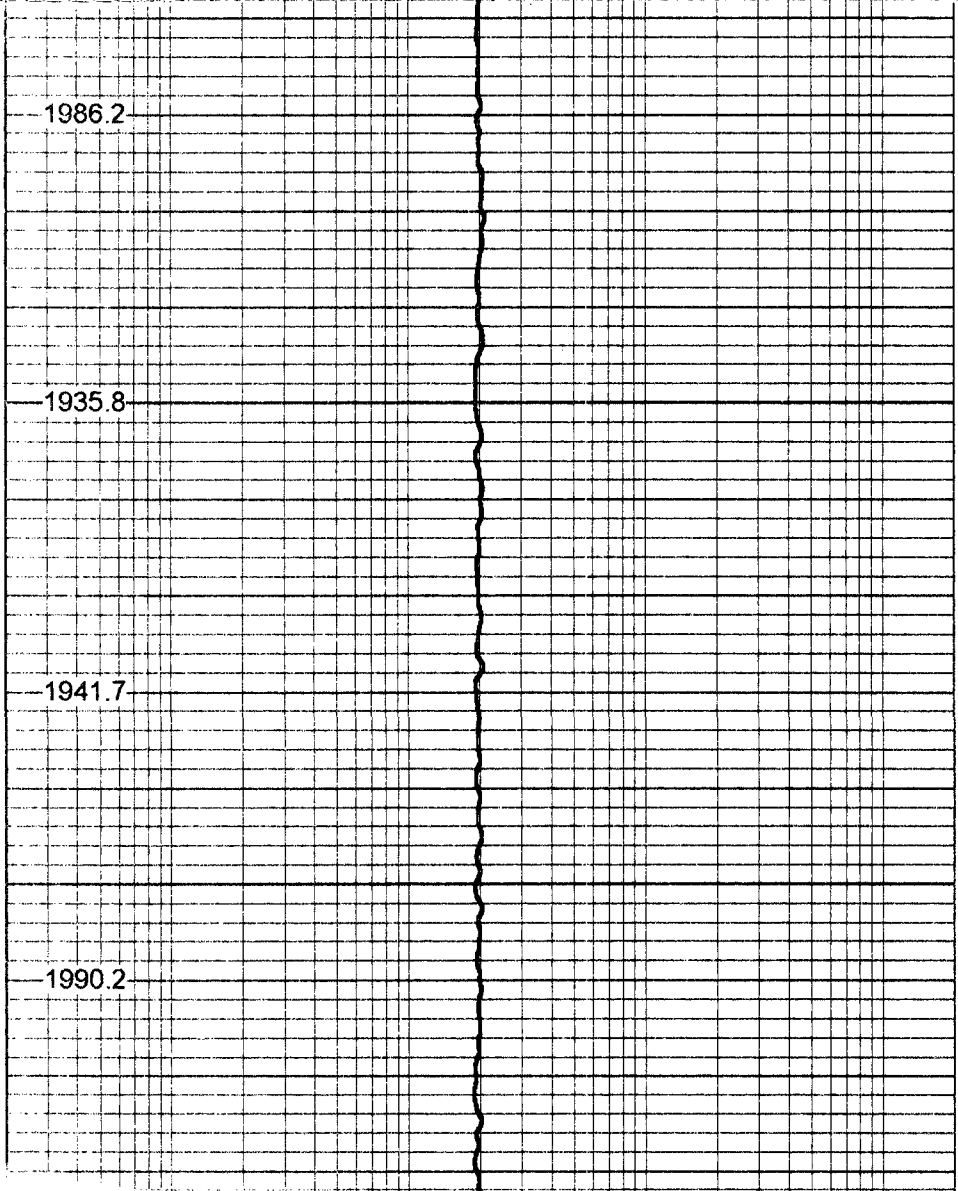


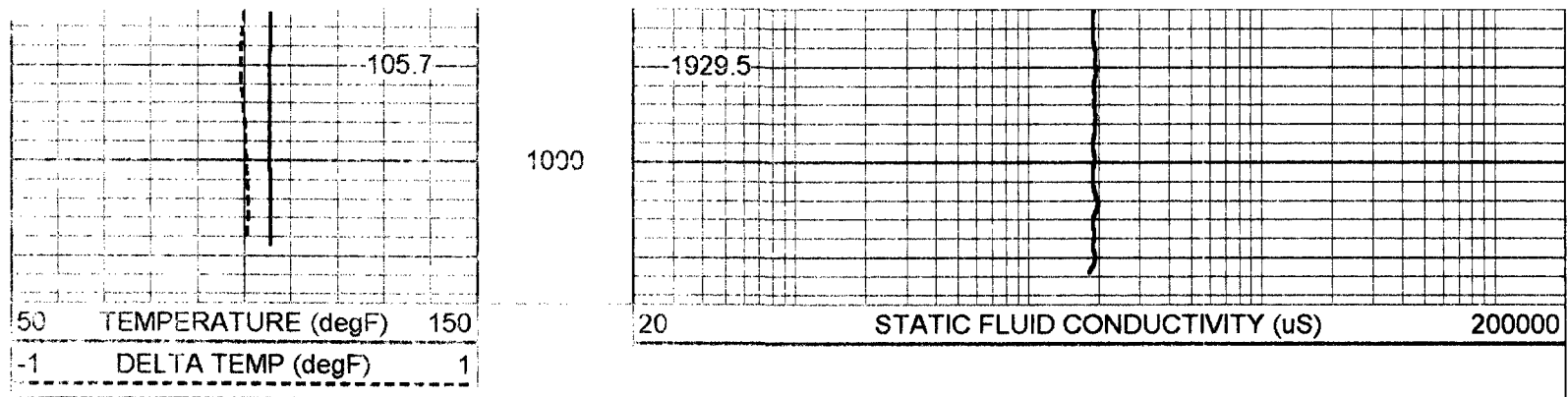


750
800
850



900
950





FRT Calibration Report

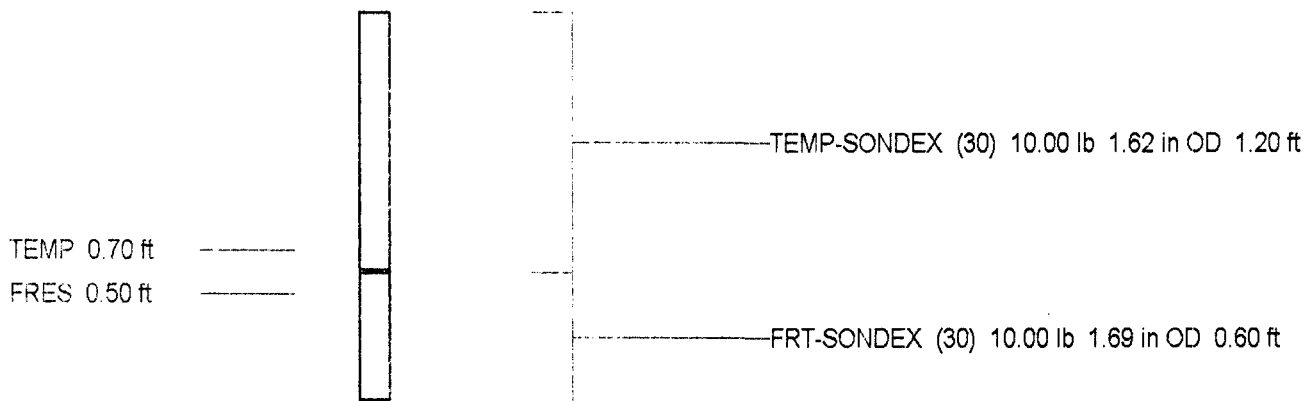
Serial Number: 30
 Tool Model: SONDEX
 Performed: Wed May 30 12:39:02 2001

Point #	Reading		Reference
1	0.000	cps	0.000
2	38.604	cps	1000.000
3	332.194	cps	10000.000
4	1502.090	cps	50000.000
5		cps	
6		cps	

Temperature Calibration Report

Serial Number: 30
 Tool Model: SONDEX
 Performed: Wed May 30 12:39:10 2001

Point #	Reading		Reference
1	0	cps	0 degF
2	113.926	cps	33 degF
3	659.964	cps	140 degF



Dataset: run3/FRT
 Total Length: 1.80 ft
 Total Weight: 20.00 lb
 O.D. 1.69 in

RECEIVED

SEP 24 2001

D.E.P. - South District