



FLUID
CONDUCTIVITY
TEMPERATURE
LOG

Company CH2M HILL
Well IMMOKALEE IW-1
Field IMMOKALEE W.W.T.P.
County COLLIER State FL

Location

Other Services

SEE COMMENTS

Permanent Datum
Log Measured From
Drilling Measured From

Elevation

Elevation



Date 12-SEPT-2001

Run Number THREE

Depth Driller 1011'

Depth Logger 1011'

Bottom Logged Interval 1011'

Top Log Interval CASING

Open Hole Size 12.25"

Type Fluid MUD

Density / Viscosity N/A

Max. Recorded Temp. N/A

Estimated Cement Top N/A

Time Well Ready 0800

Time Logger on Bottom 0000

Equipment Number 102

Location FT. MYERS

Recorded By FERGUSON

Witnessed By T. LEVI

Location LEE

Witnessed By S. SKEHAN

Borehole Record		Borehole Record	
Run Number	Bit	Top	Bottom
ONE	12.25"	SURFACE	310'
TWO	42"	SURFACE	279'
THREE	12.25"	CASING	1011'

Borehole Record		Borehole Record	
Run Number	Bit	Top	Bottom
ONE	12.25"	SURFACE	310'
TWO	42"	SURFACE	279'
THREE	12.25"	CASING	1011'

Casing Record

Casing Record

Casing Record

Casing Record

Size 38"

Wgt./ft. 3.75 W.T.

Top SURFACE

Bottom 275'

<< Print here >>

All interpretations are opinions based on inferences from electrical or other measurements and we cannot and do not guarantee the accuracy or correctness of any interpretation, and we shall not, except in the case of gross or willful negligence on our part, be liable or responsible for any loss, costs, damages, or expenses incurred or sustained by anyone resulting from any interpretation made by any of our officers, agents or employees. These interpretations are also subject to our general terms and conditions set out in our current Price Schedule.

Comments

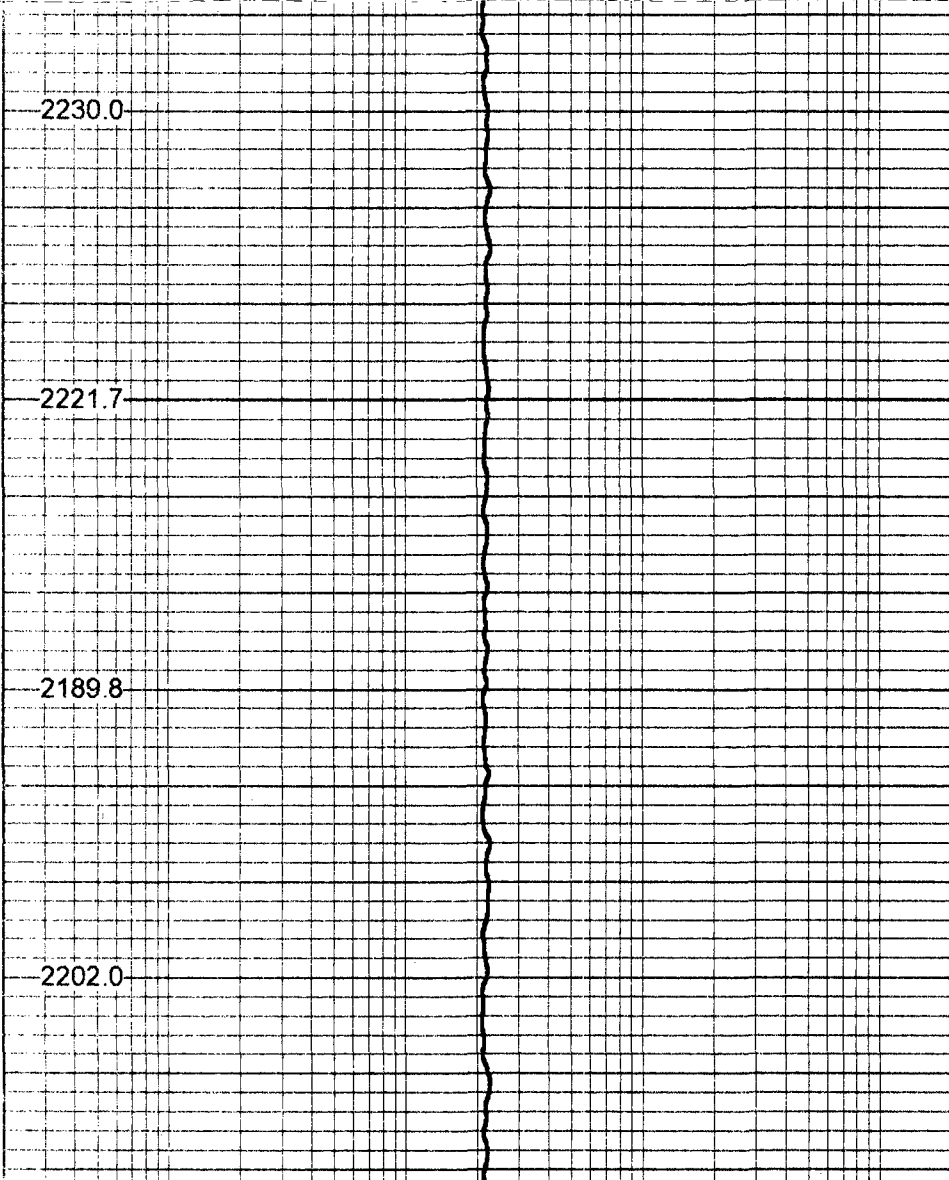
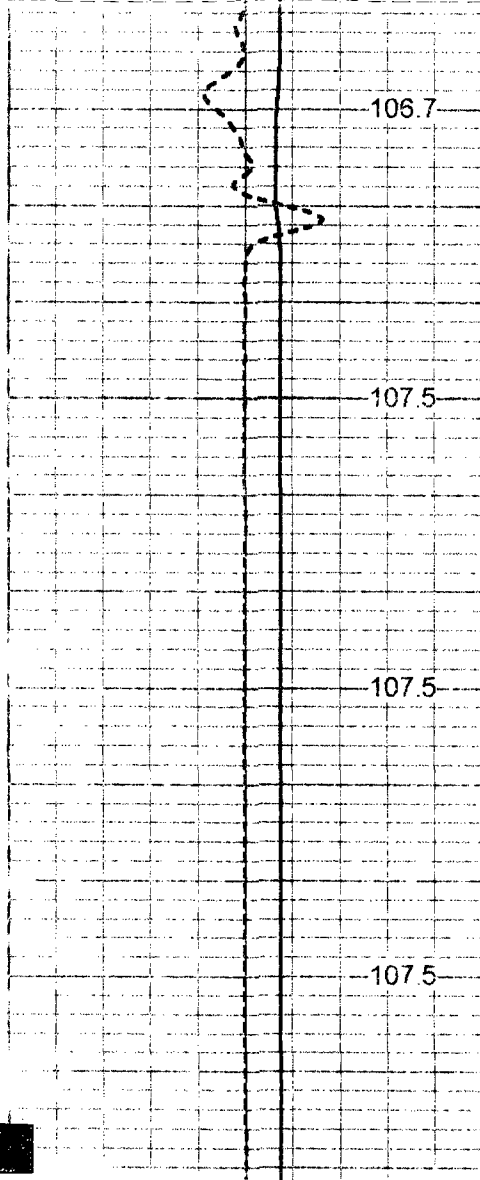
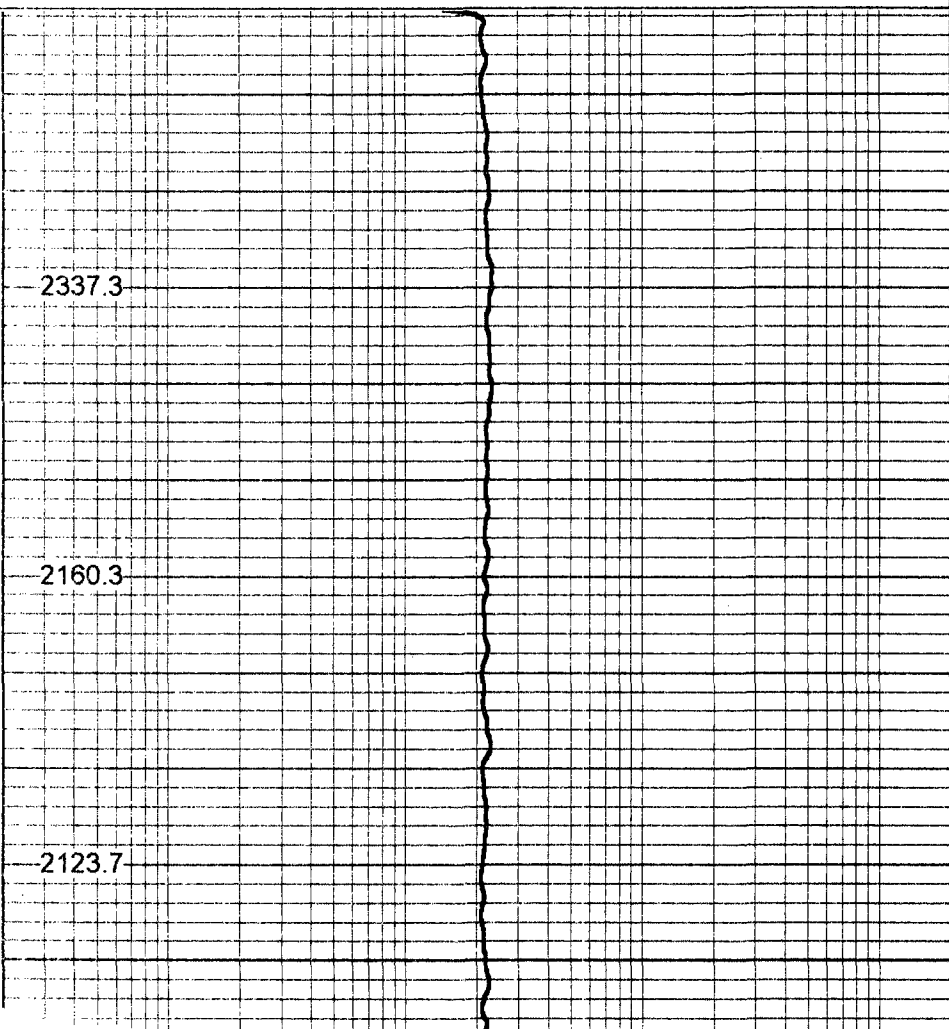
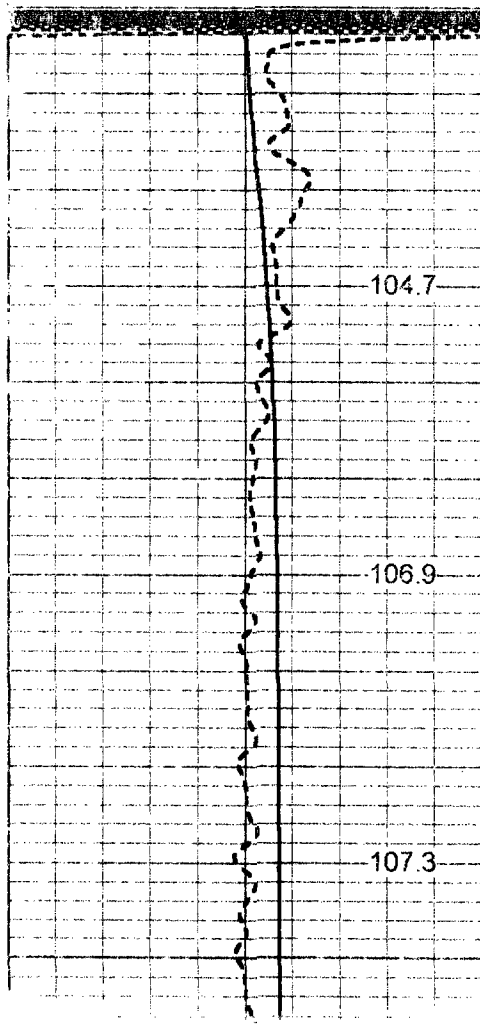
DIL/LL3/SP
X-Y/GR
BHC/SONIC/VDL

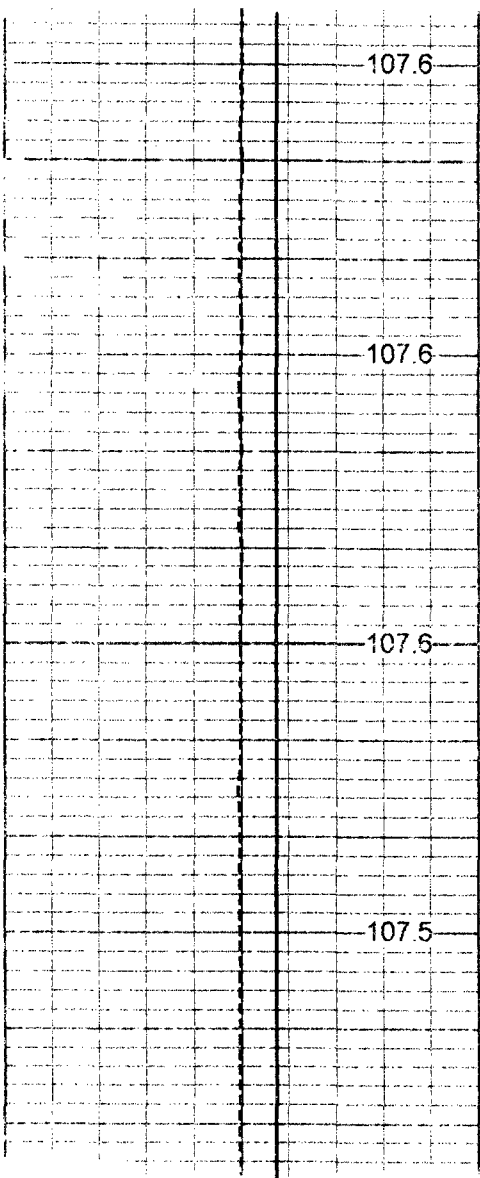


FCT

50 TEMPERATURE (degF) 150
-1 DELTA TEMP (degF) 1

20 STATIC FLUID CONDUCTIVITY (uS) 200000

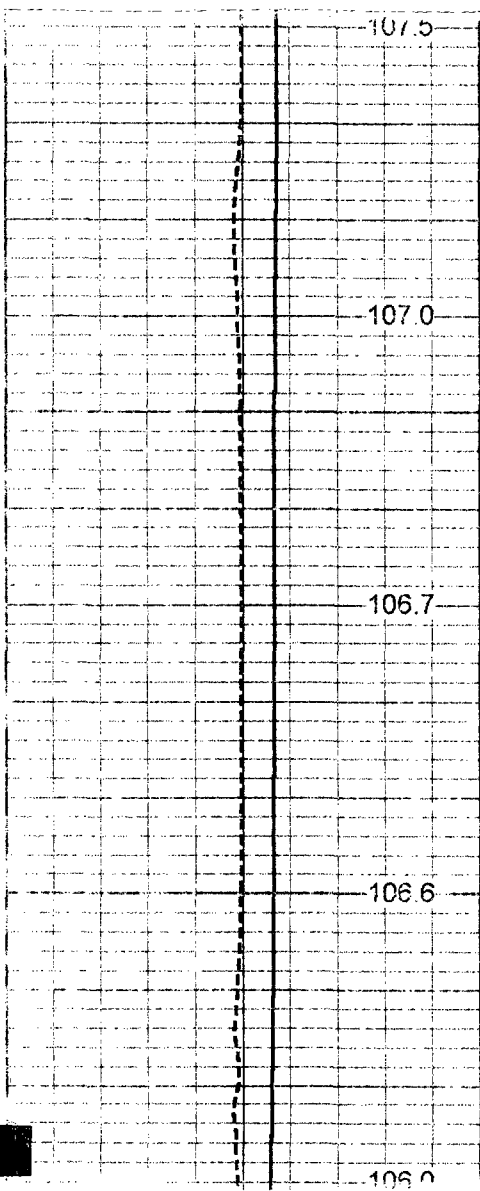




250

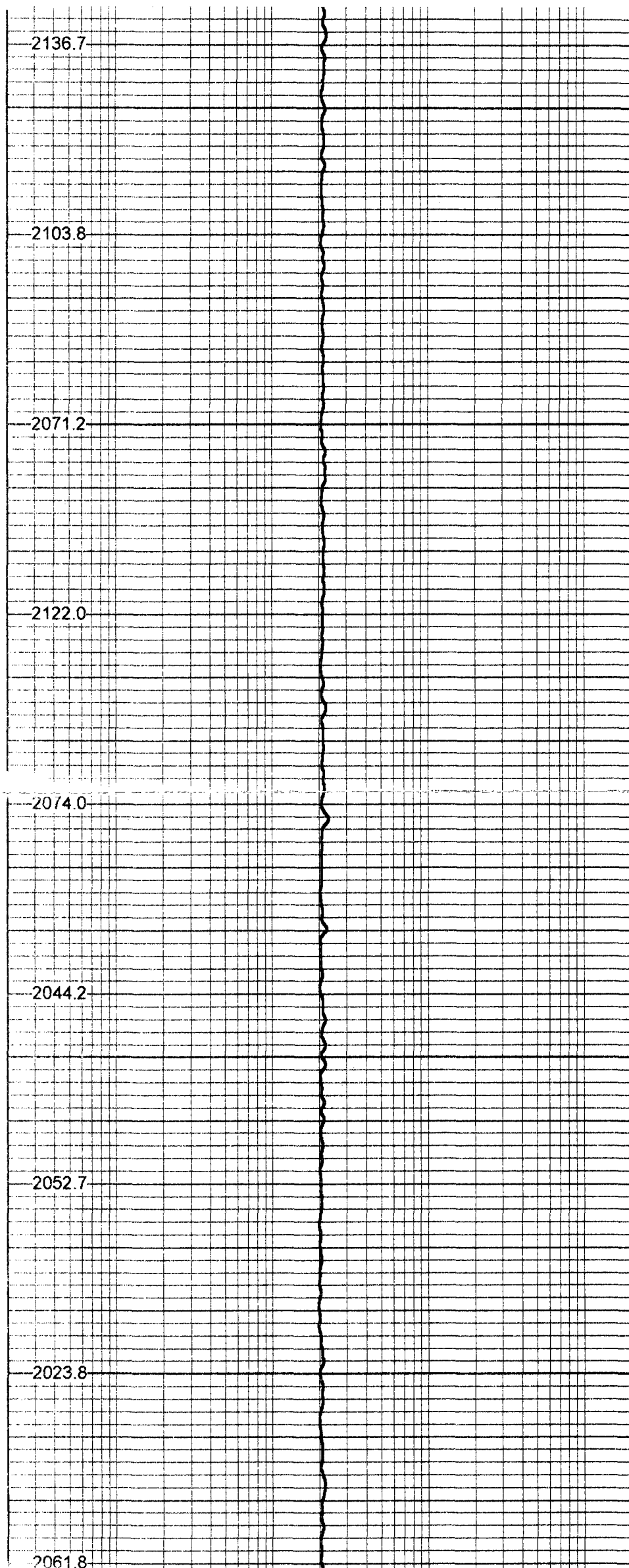
300

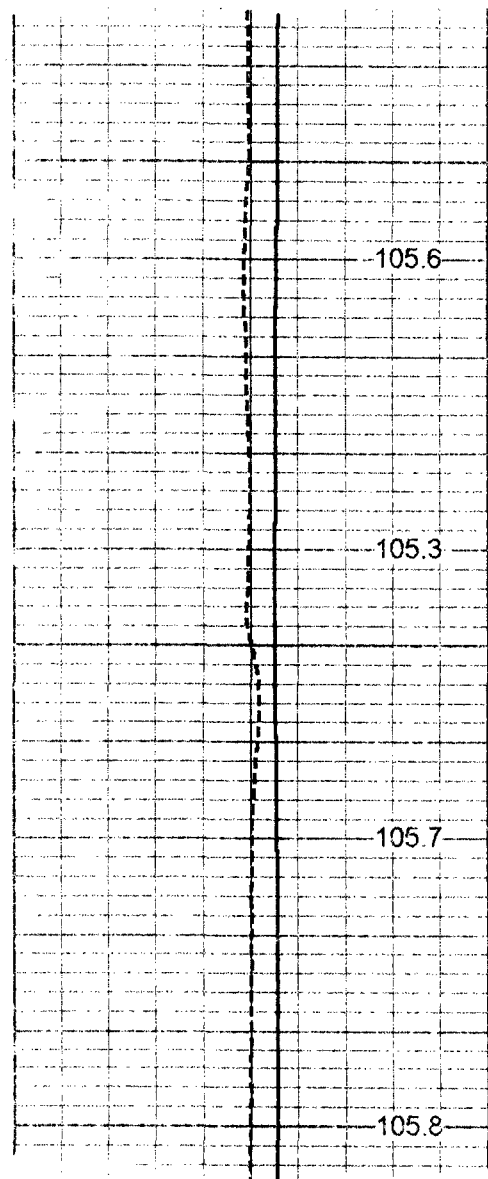
350



400

450





500

2041.6

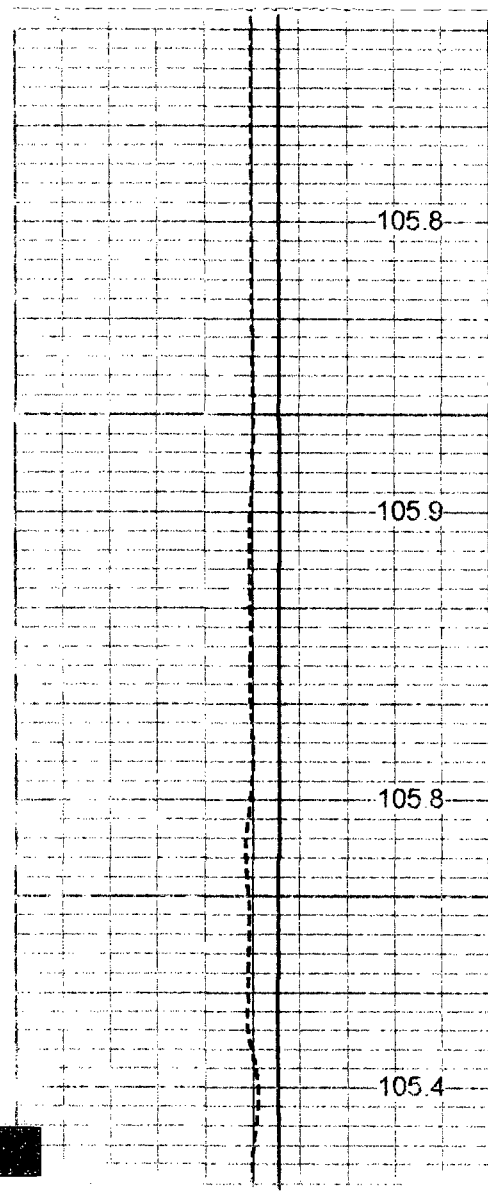
1998.8

550

2063.4

600

2011.7



650

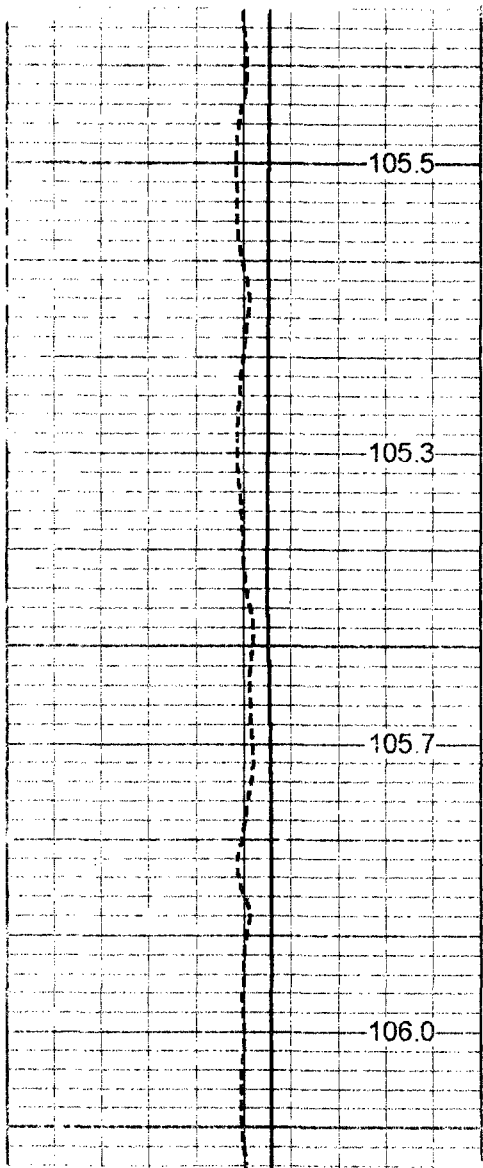
2051.5

1976.0

700

1976.9

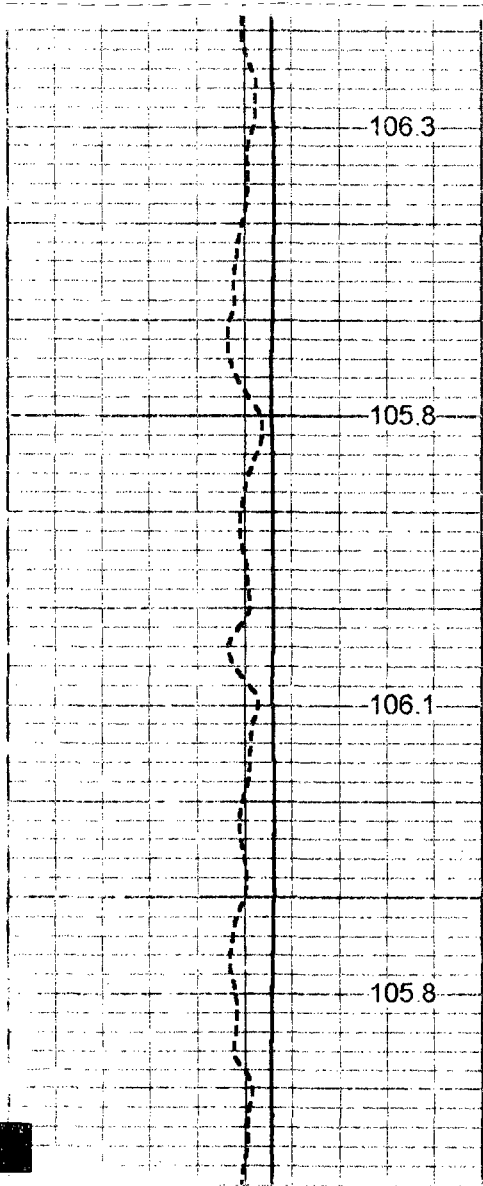
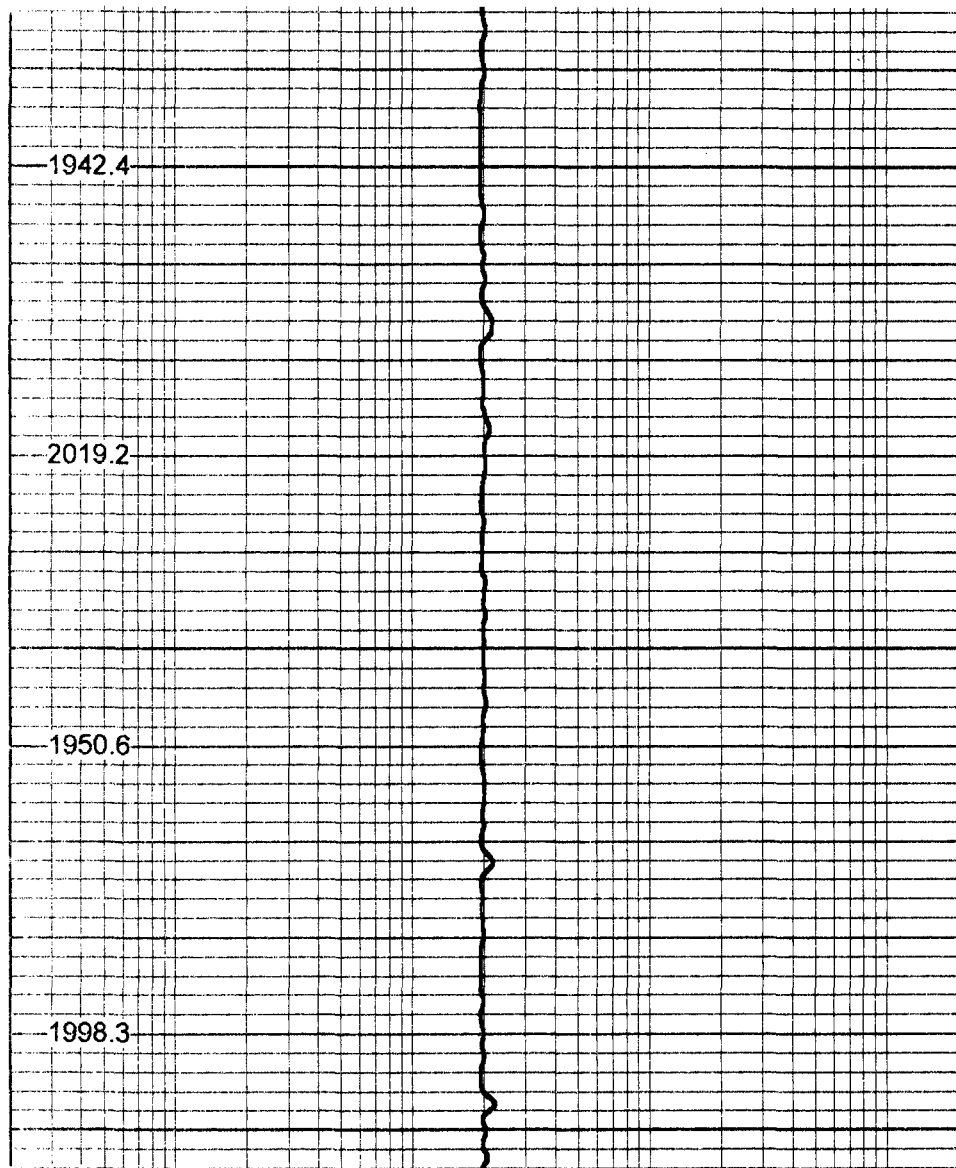
2050.2



750

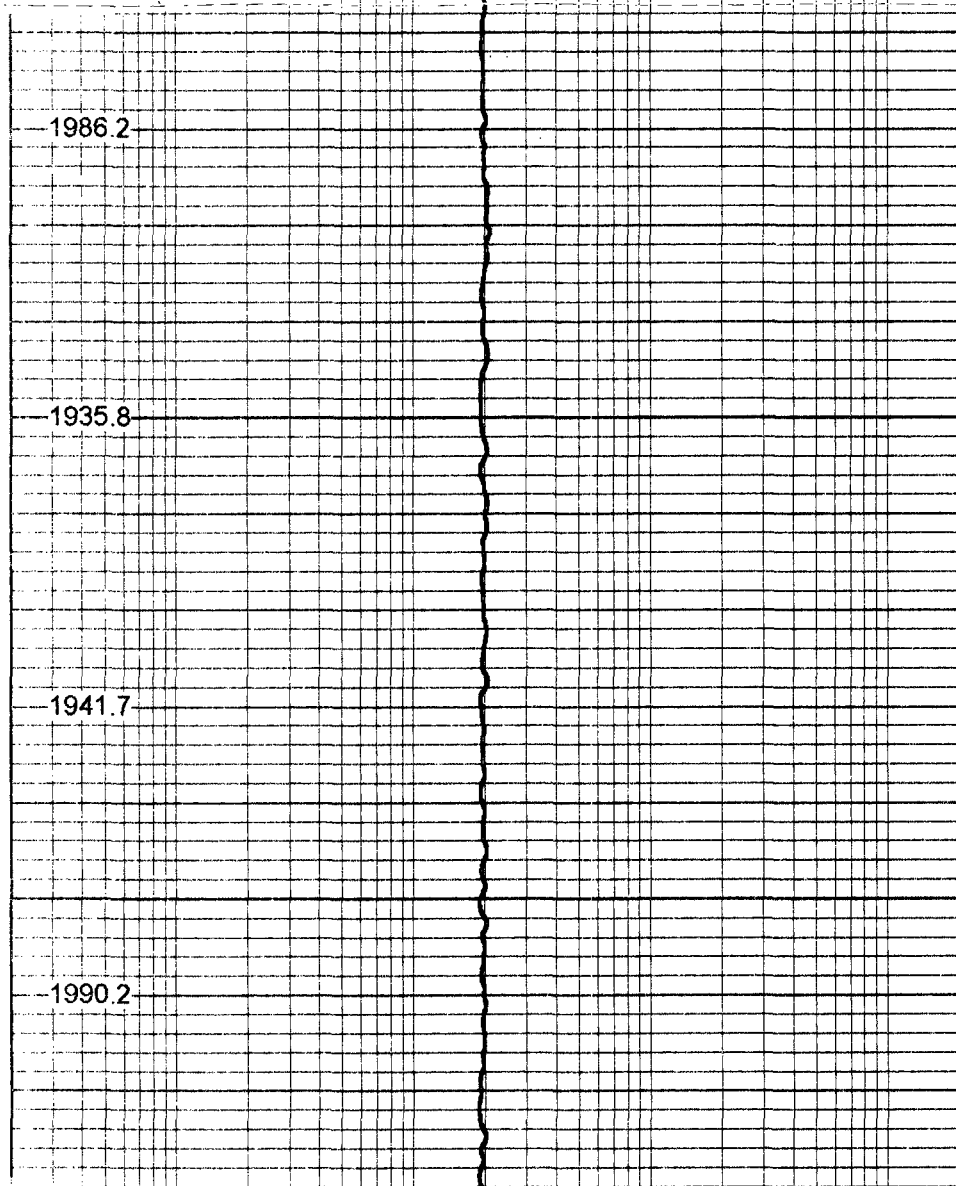
800

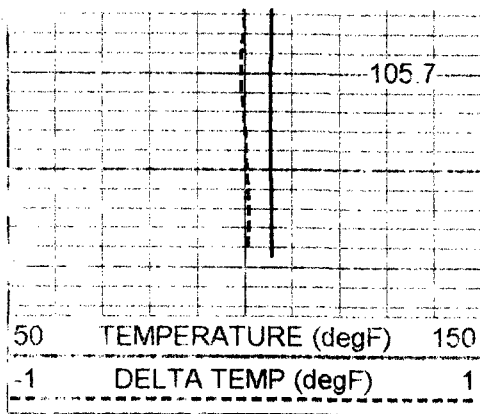
850



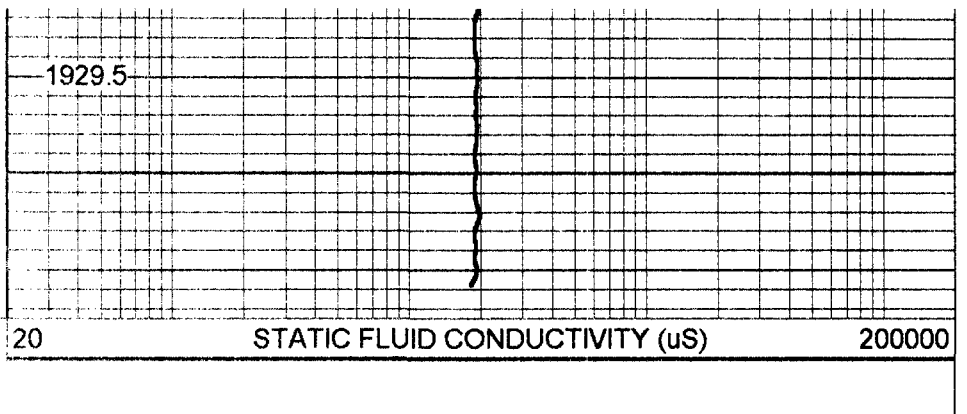
900

950





1000



FRT Calibration Report

Serial Number: 30
 Tool Model: SONDEX
 Performed: Wed May 30 12:39:02 2001

Point #	Reading		Reference
1	0.000	cps	0.000
2	38.604	cps	1000.000
3	332.194	cps	10000.000
4	1502.090	cps	50000.000
5		cps	
6		cps	

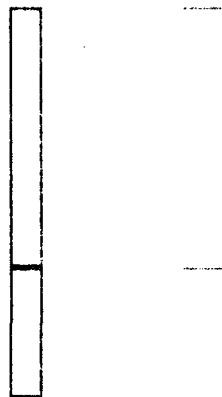
Temperature Calibration Report

Serial Number: 30
 Tool Model: SONDEX
 Performed: Wed May 30 12:39:10 2001

Point #	Reading		Reference
1	0	cps	0 degF
2	113.926	cps	33 degF
3	659.964	cps	140 degF

TEMP 0.70 ft

FRES 0.50 ft



TEMP-SONDEX (30) 10.00 lb 1.62 in OD 1.20 ft

FRT-SONDEX (30) 10.00 lb 1.69 in OD 0.60 ft

Dataset: run3/FRT
 Total Length: 1.80 ft
 Total Weight: 20.00 lb
 O.D.: 1.69 in