



# HIGH RESOLUTION TEMPERATURE LOG

Company CH2M HILL  
Well DIW #1  
Field GASPARILLA I.W.A  
County CHARLOTTE  
State FLORIDA

Company CH2M HILL  
Well DIW #1  
Field GASPARILLA ISLD. WATER ASSOC.  
County CHARLOTTE State FLORIDA

Location	Permanent Datum	PAD	Elevation	Other Services
Log Measured From	PAD	PAD		RTS
Drilling Measured From	PAD	PAD		KB, D.F., GL

Date	9/18/01
Run Number	TEN
Depth Driller	1700'
Depth Logger	1689'
Bottom Logged Interval	1689'
Top Log Interval	CASING
Open Hole Size	12.25"
Type Fluid	WATER
Density / Viscosity	N/A
Max. Recorded Temp.	92 DEGF
Estimated Cement Top	N/A
Time Well Ready	0630
Time Logger on Bottom	0730
Equipment Number	103
Location	FT. MYERS
Recorded By	DENISON
Witnessed By	R. DEAN

Run Number	Bit Size	Borehole Record		Wgt/H	Tubing Record	
		From	To		From	To
ONE	12.25"	SURFACE	375'	375	SURFACE	375'
FOUR	28.5"	CASING	655'	375	SURFACE	650'
FIVE	12.25"	CASING	1700'	375	SURFACE	1485'
SIX	20"	CASING	1485'	FRP	SURFACE	1480'
Casing Record		Size			Top	Bottom
Surface String		30"		375	SURFACE	375'
Prod. String		22"		375	SURFACE	650'
Production String		12.75"		375	SURFACE	1485'
Liner		6"		FRP	SURFACE	1480'

<<< Fold Here >>>

All interpretations are opinions based on inferences from electrical or other measurements and we cannot and do not guarantee the accuracy or correctness of any interpretation, and we shall not, except in the case of gross or willful negligence on our part, be liable or responsible for any loss, costs, damages, or expenses incurred or sustained by anyone resulting from any interpretation made by any of our officers, agents or employees. These interpretations are also subject to our general terms and conditions set out in our current Price Schedule.

### Comments



**FLORIDA**  
GEOPHYSICAL LOGGING, INC.

# TEMPERATURE SURVEY

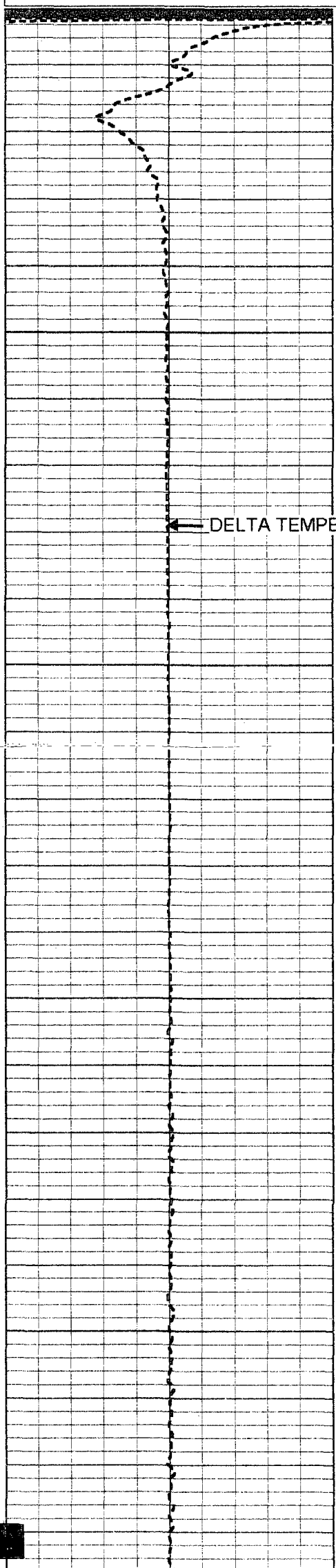
Database File: gasprts.db  
Dataset Pathname: pass2  
Presentation Format: temp.prs

-1 DELTA TEMPERATURE (degF) 1

70

TEMPERATURE (degF)

110



50

100

150

200

81.5 ← TEMPERATURE

79.9

79.7

79.5

79.5

79.5

79.6

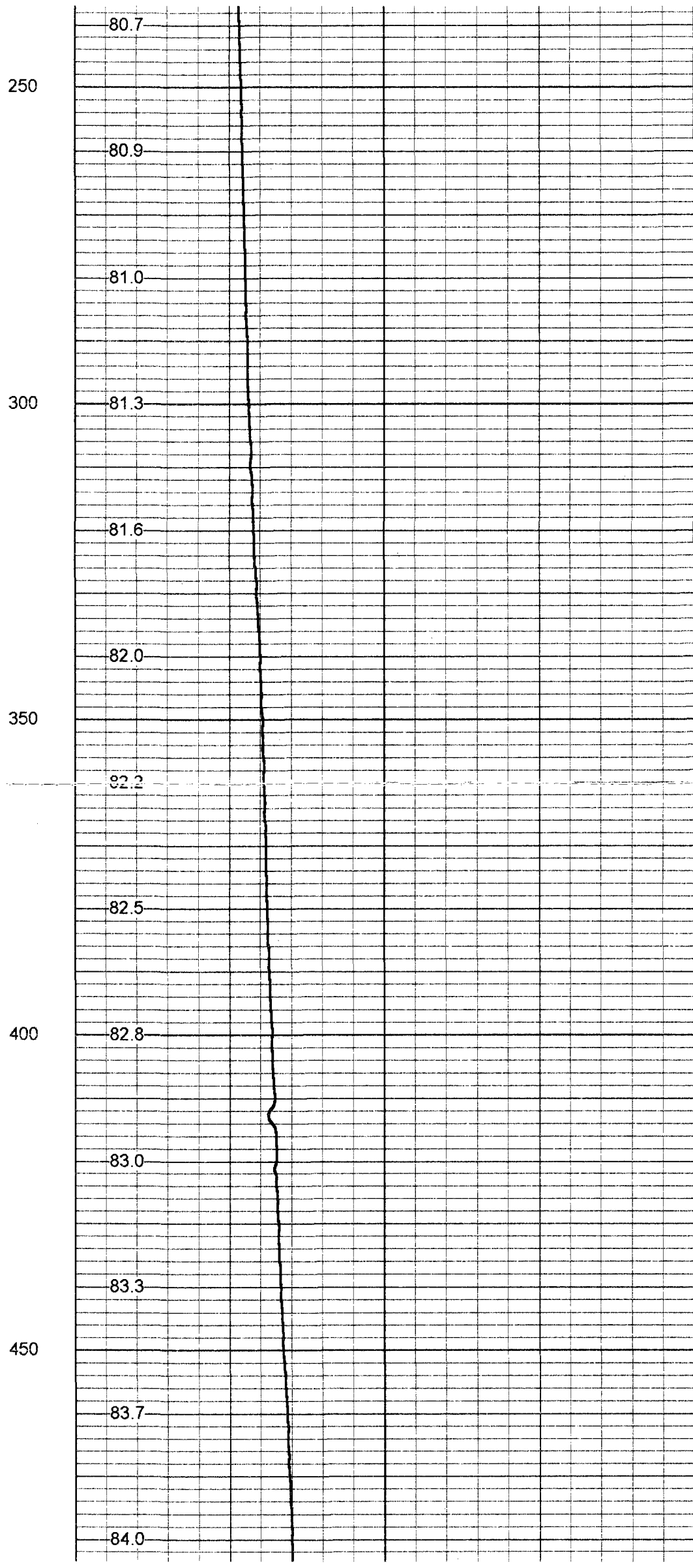
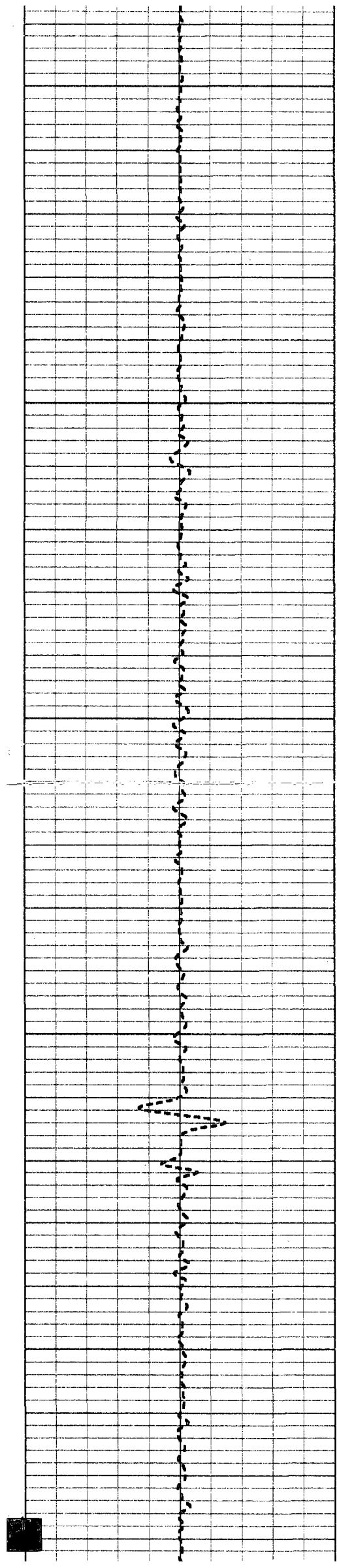
79.8

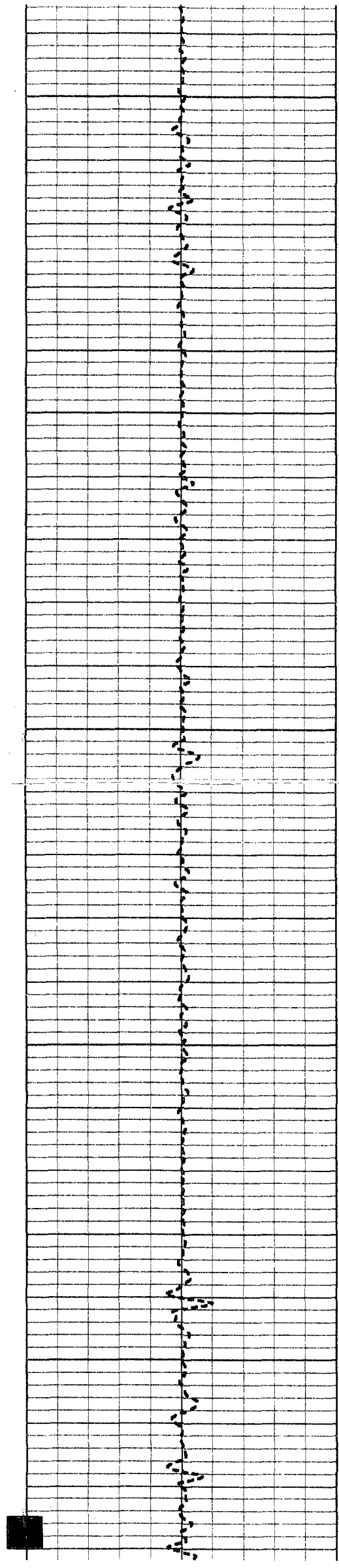
80.0

80.3

80.4

← TEMPERATURE





500

84.3

84.5

84.7

550

84.9

85.2

600

85.5

85.8

86.2

650

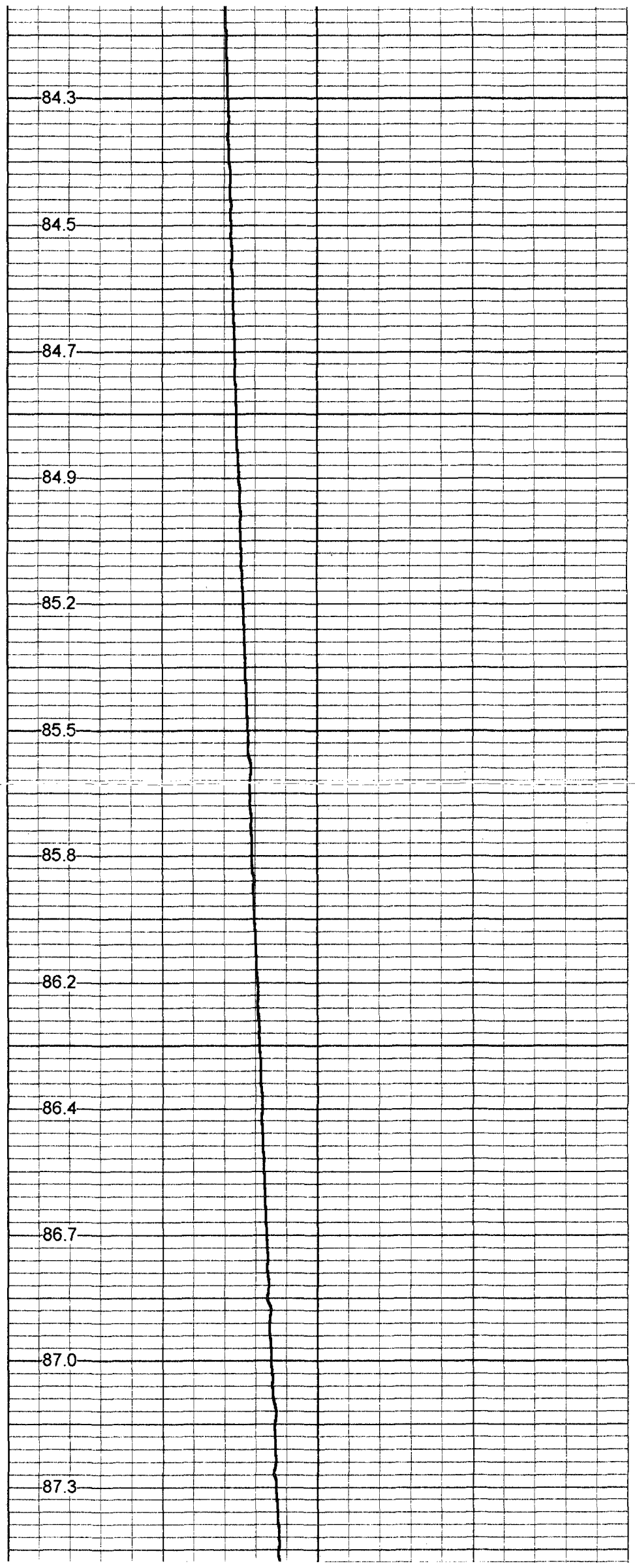
86.4

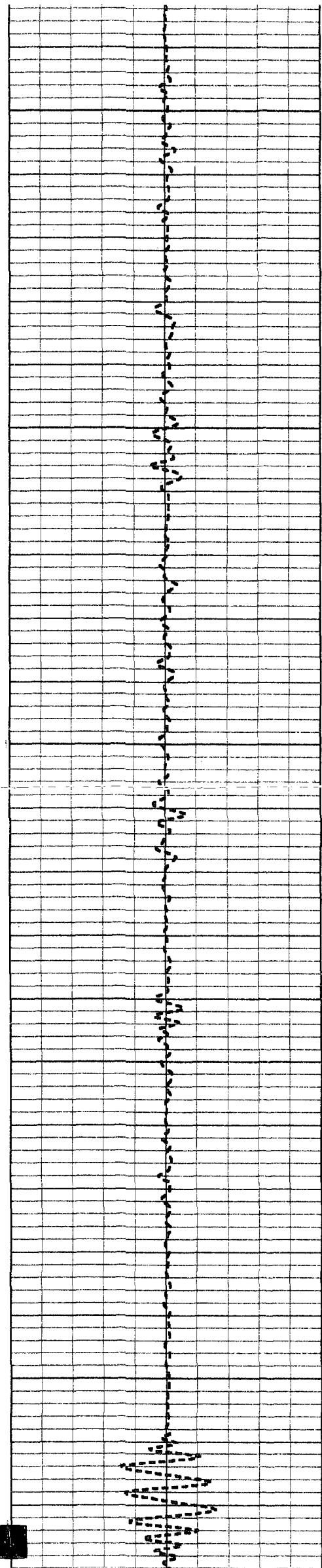
86.7

700

87.0

87.3





750

800

850

900

950

87.6

88.0

88.3

88.7

89.0

89.3

89.4

89.6

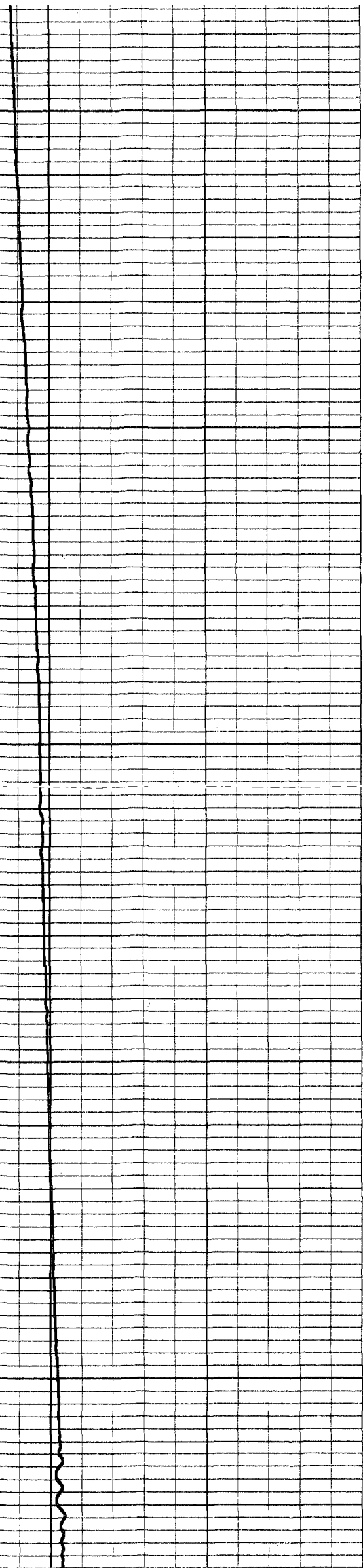
89.8

90.1

90.3

90.6

on 2





1000

91.0

91.3

91.4

1050

91.6

91.8

1100

91.8

91.9

92.1

1150

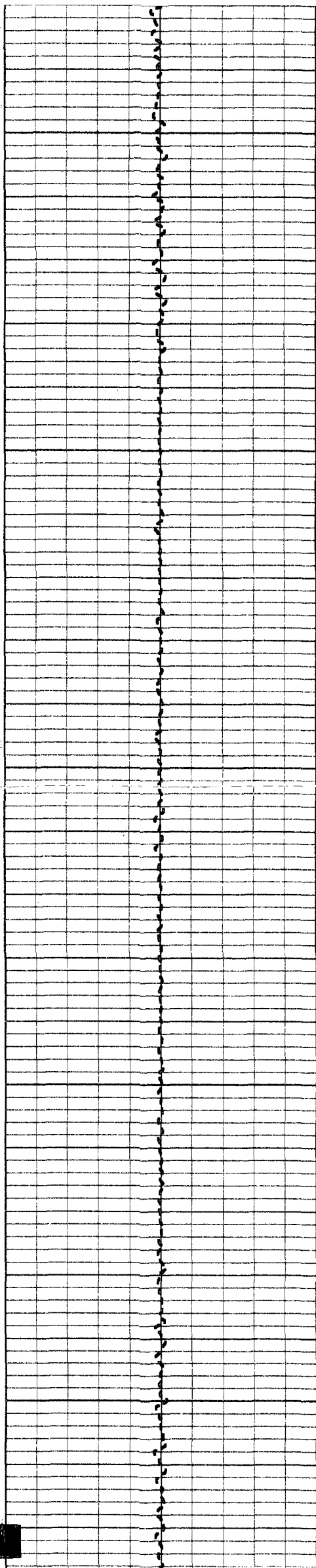
92.1

92.2

1200

92.5

92.7



1250

1300

1350

1400

1450

92.5

92.4

92.5

92.5

92.5

92.5

92.5

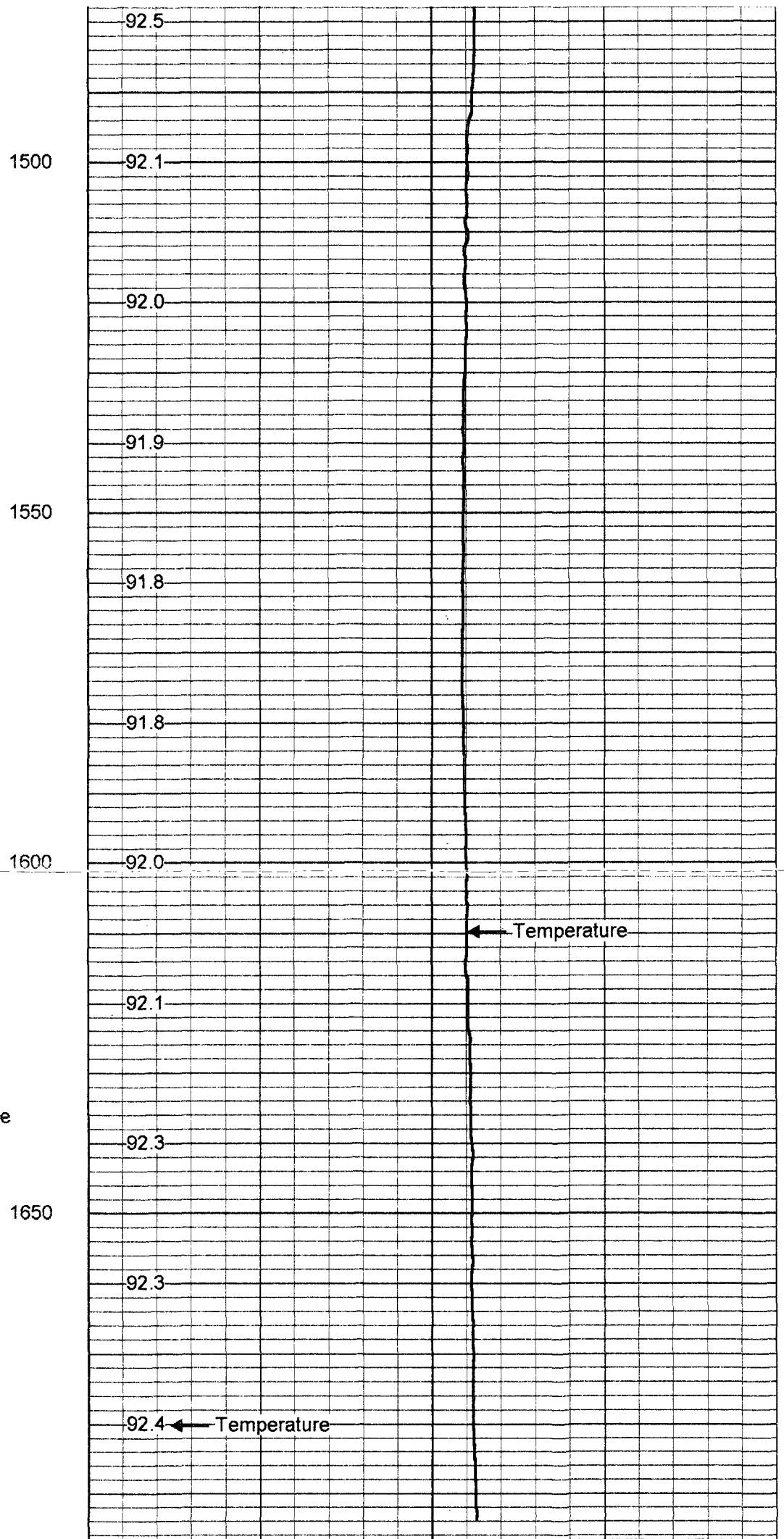
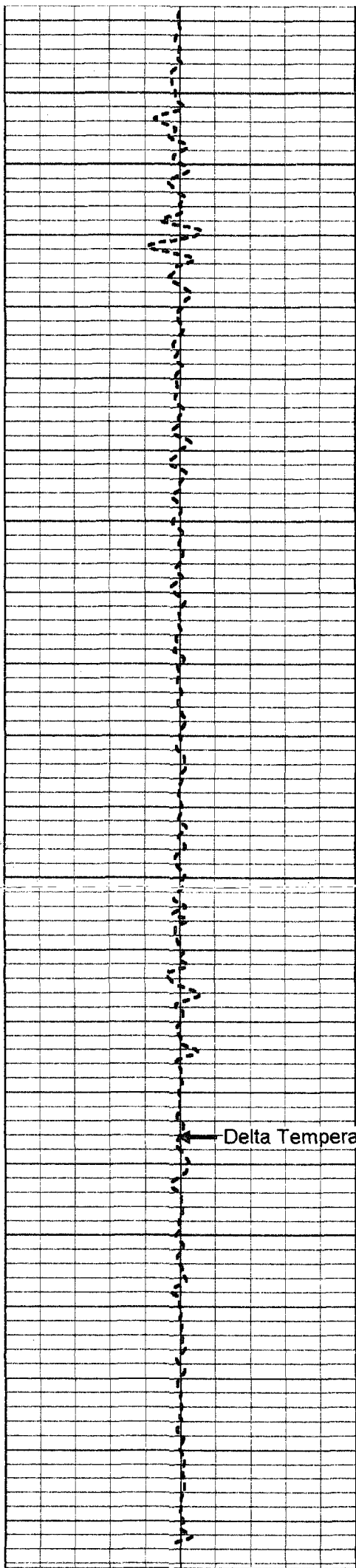
92.5

92.5

92.5

92.5

92.5



-1 DELTA TEMPERATURE (degF) 1

70 TEMPERATURE (degF) 110



TEMP-RTS (954) 70.00 lb 1.69 in OD 25.50 ft

TEMP 0.10 ft

Dataset: run1/pass2  
Total Length: 25.50 ft  
Total Weight: 70.00 lb  
O.D. 1.69 in

Serial Number:  
Tool Model:  
Performed:

954  
RTS  
Wed Feb 28 14:27:36 2001

Point #	Reading		Reference	
1	338.011	cps	34	degF
2	789.31	cps	78	degF
3	1553.28	cps	152	degF