



HIGH RESOLUTION  
TEMPERATURE  
LOG

Company Gasparilla Island WA  
Well IW-1  
Field Rotunda  
County Charlotte  
State/Prv Florida

Company Gasparilla Island Water Assoc.  
Well IW-1  
Field Rotunda  
County Charlotte  
State/Prv Florida

Location  
Gasparilla Island Water Association  
Cape Haze / Rotunda RO Facility  
CH2M Hill, Inc.

Permanent Datum  
Log Measured From  
Drilling Measured From

Pad Level  
Pad Level  
Pad Level

Elevation

Other Services  
RTS  
HRT  
VIDEO

Date	6-JUL-2006	
Run Number	MIT '06	
Depth Driller	1700'	
Depth Logger	1691'	
Bottom Logged Interval	1691'	
Top Log Interval	SURFACE	
Open Hole Size	11"	
Type Fluid	WATER	
Density / Viscosity	NA/NA	
Max. Recorded Temp.	89.4 degF	
Estimated Cement Top	NA	
Time Well Ready	10:00 7/6/06	
Time Logger on Bottom	16:00 7/6/06	
Equipment Number	MVGS-1	
Location	Fl. Myers	
Recorded By	S. Miller/C. Miller	
Witnessed By	M. Weatherby (CH2M)	P. Larkin (CH2M)
Run Number	ONE	
Bit	11"	
From	1491'	
To	1700'	
Size	12"	
Wgt/Ft	0.375" WT	
Prot. String	6" FRP	
Production String	NA	
Liner	NA	
Invoice No.	2006196	* FINAL PRINT *

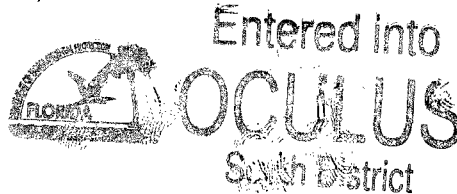
All interpretations are opinions based on inferences from electrical or other measurements and we cannot and do not guarantee the accuracy or correctness of any interpretation, and we shall not, except in the case of gross or willful negligence on our part, be liable or responsible for any loss, costs, damages, or expenses incurred or sustained by anyone resulting from any interpretation made by any of our officers, agents or employees. These interpretations are also subject to our general terms and conditions set out in our current Price Schedule.

Comments

TEMPERATURE CALIBRATION REPORT

(performed: 6-JUN-2006 09:15)

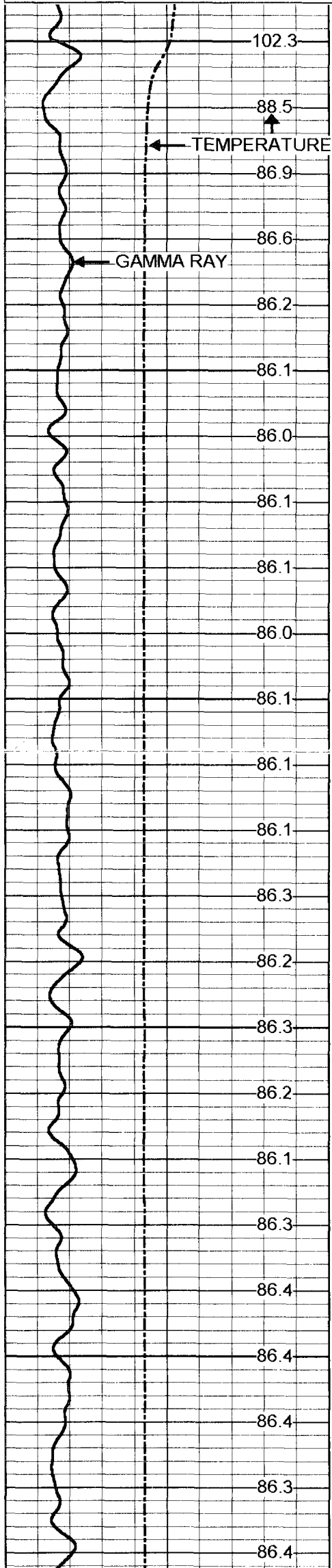
DEG-F	CPS
35.3	145.22
148.7	2733.27



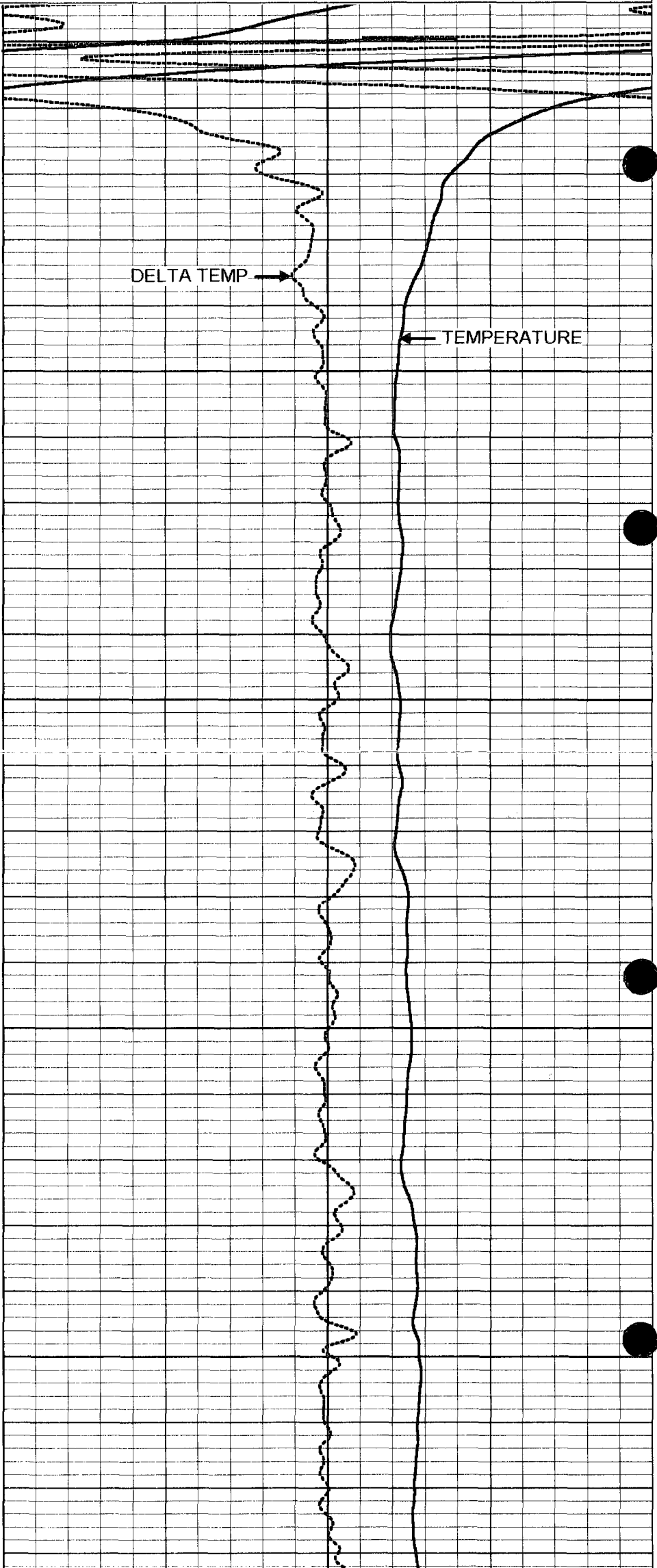
Background Temperature

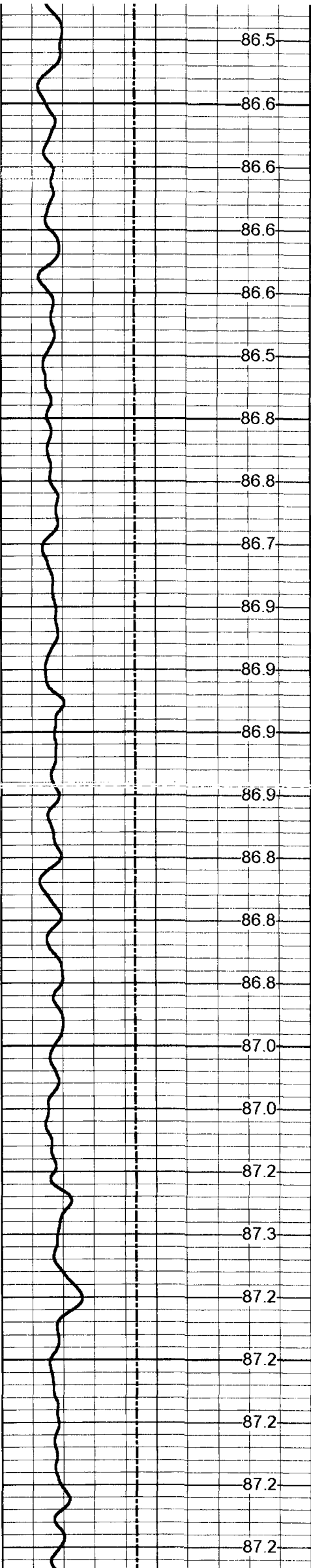
Database File: giwaiw16.db  
Dataset Pathname: HRT  
Presentation Format: hrtgiwa1.prs  
Dataset Creation: Thu Jul 06 19:02:06 2006  
Charted by: Depth in Feet scaled 1:240

0 TEMP (degF) 200  
0 GAMMA RAY (GAPI) 100



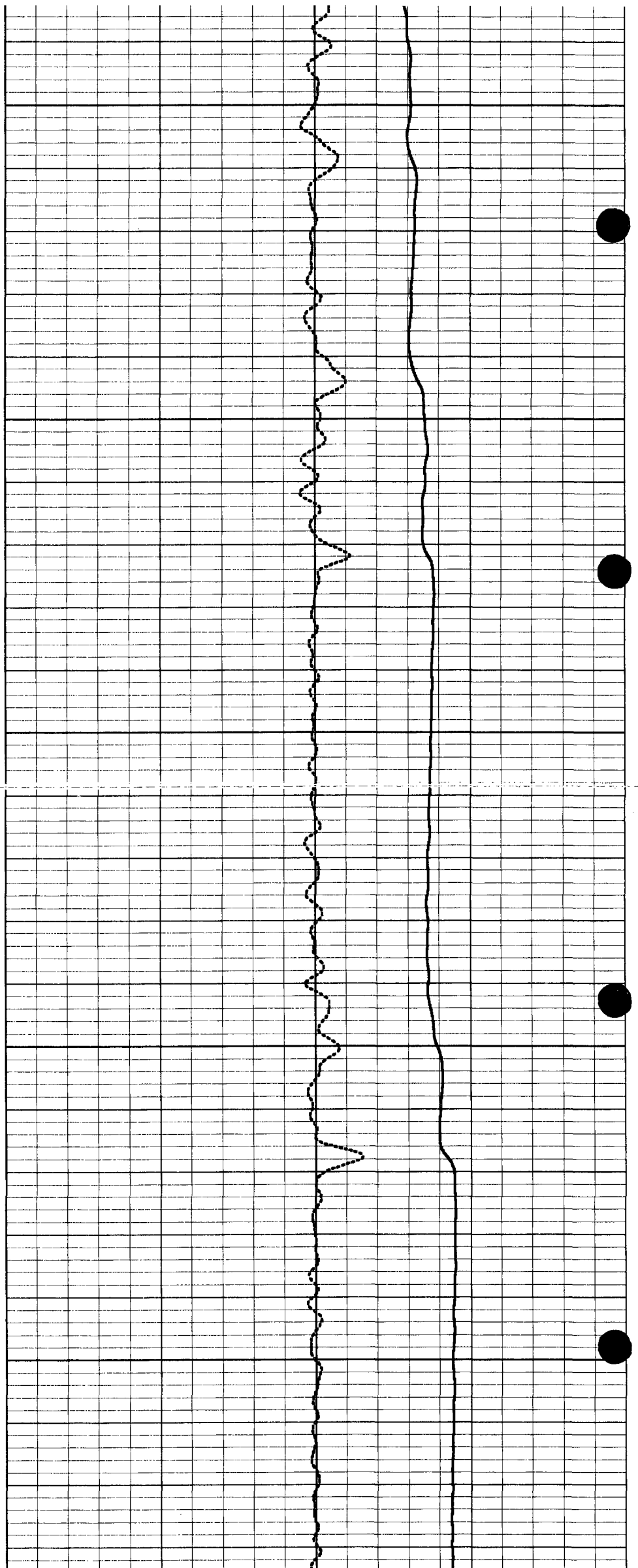
80 TEMPERATURE (degF) 90  
-0.5 DELTA TEMP (degF) 0.5

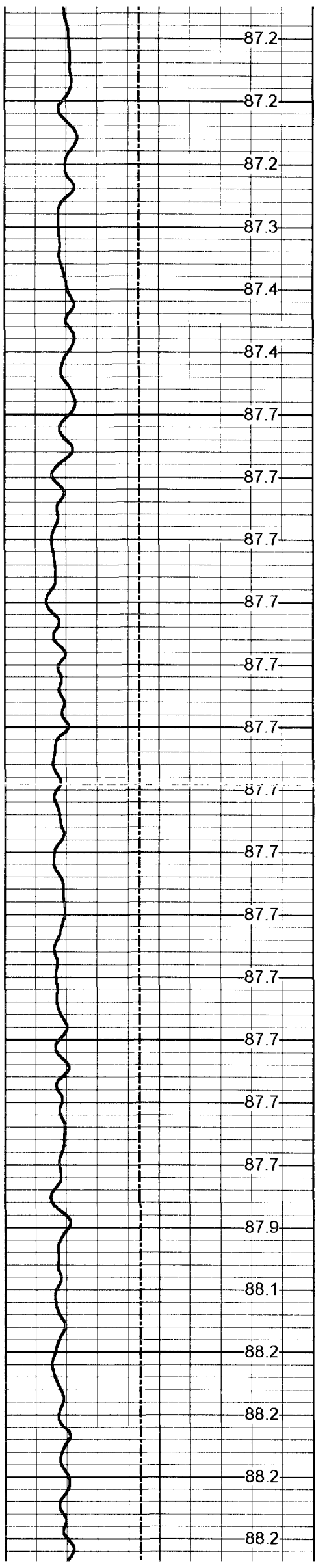




300

400

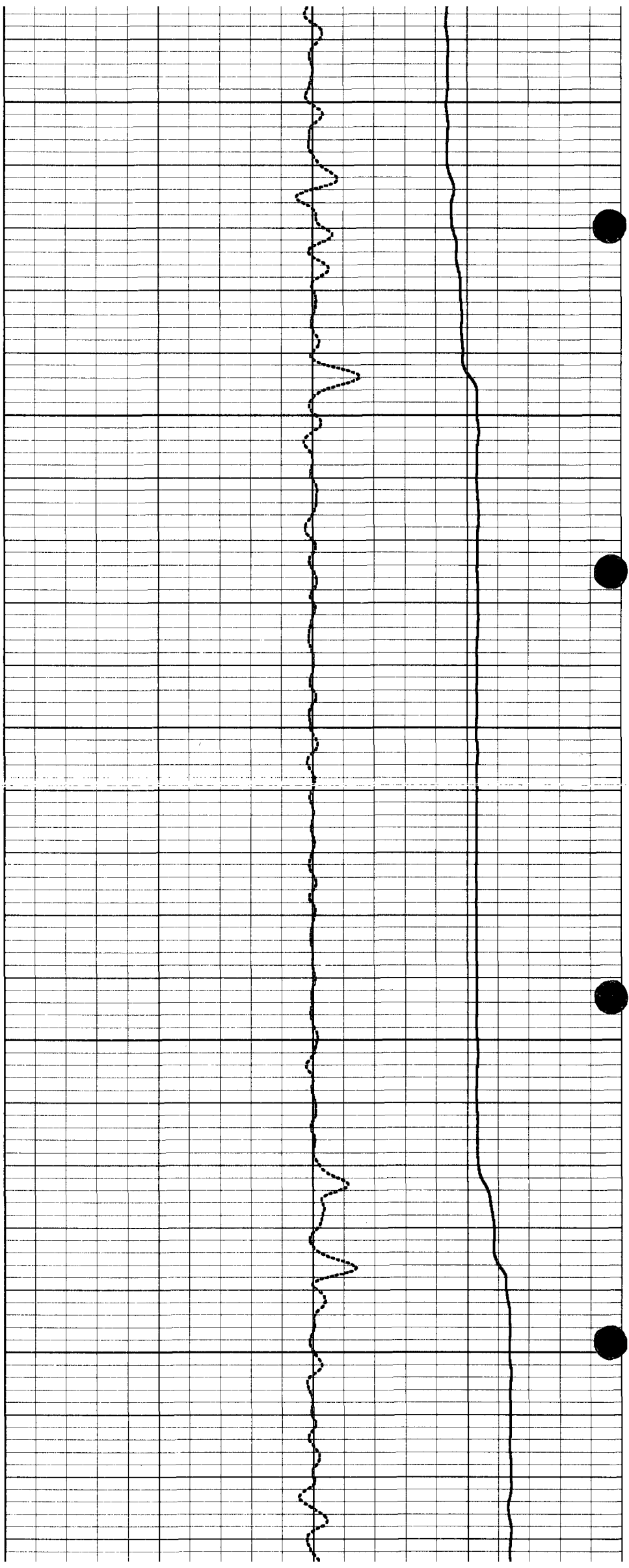


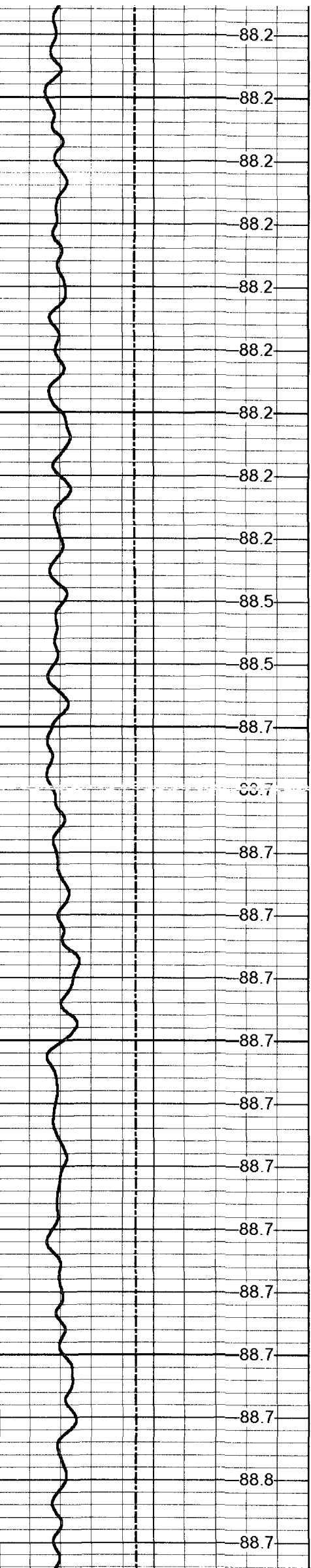


500

600

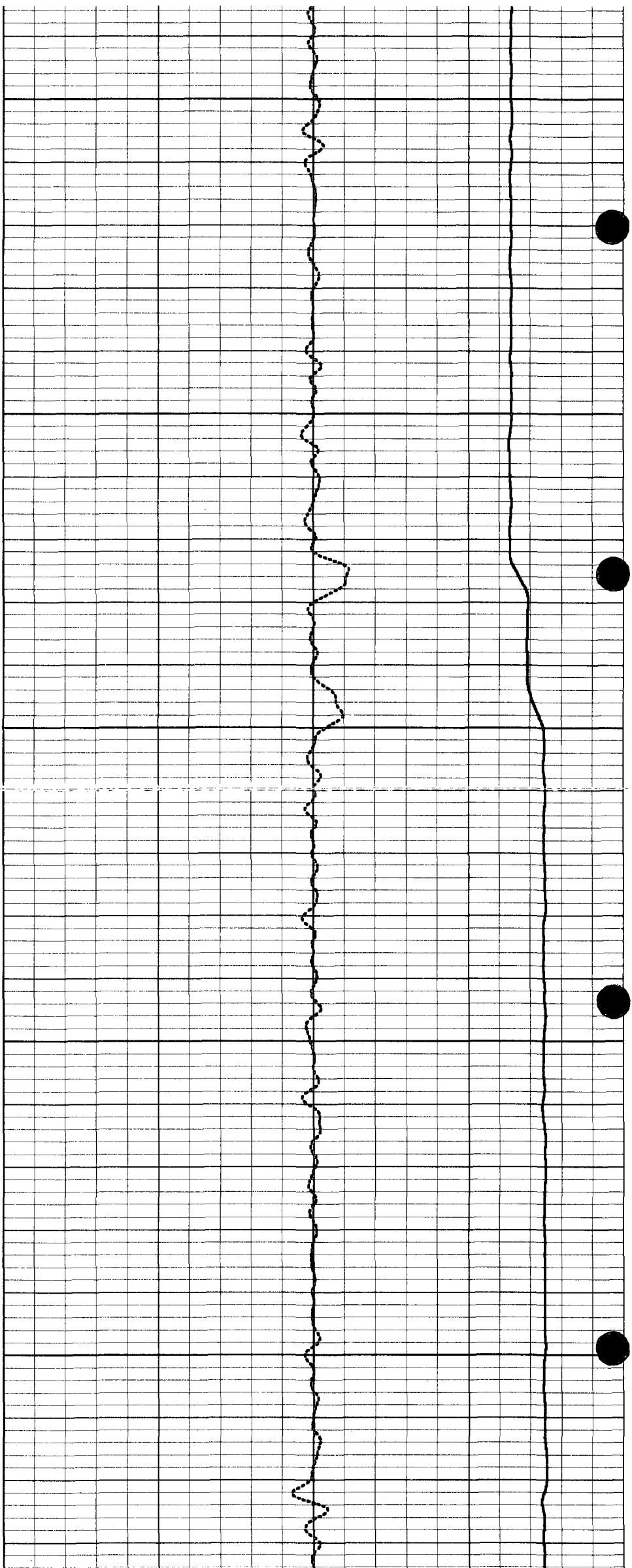
700

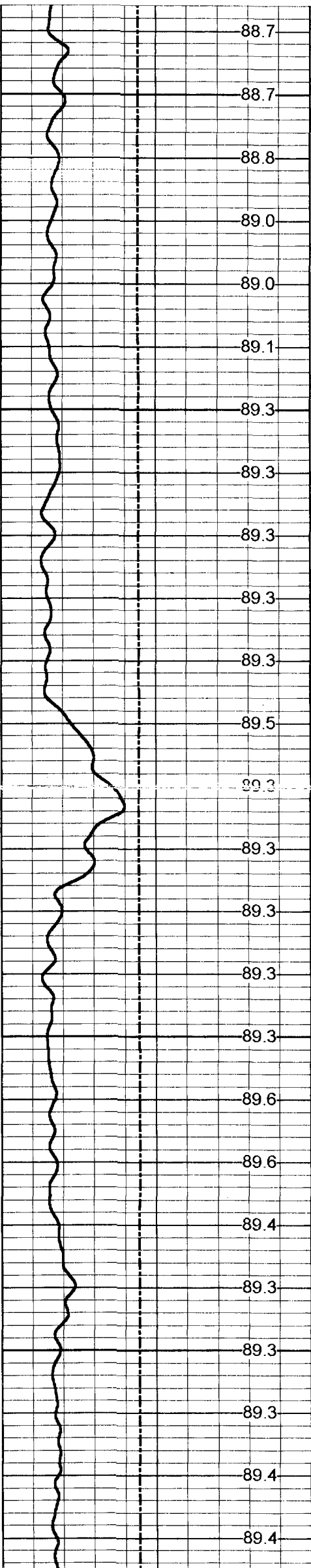




800

900

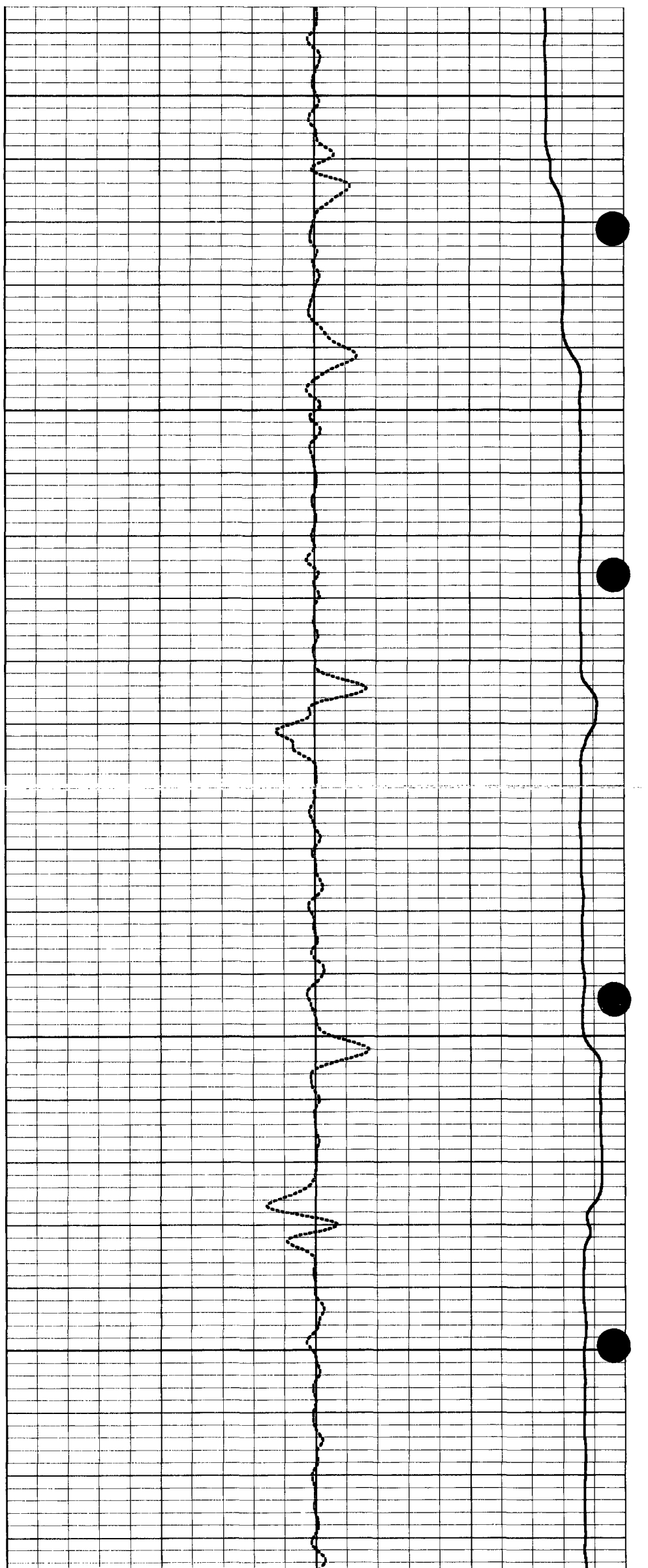


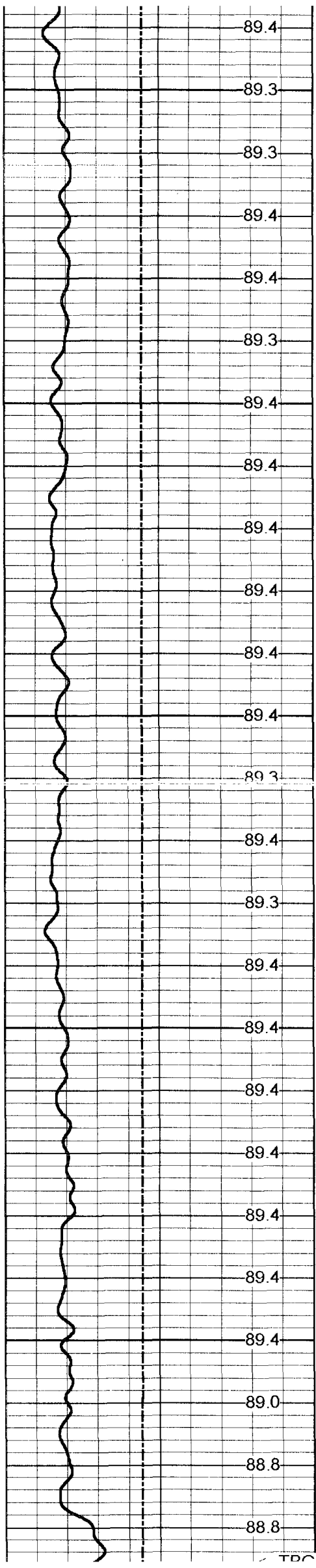


1000

1100

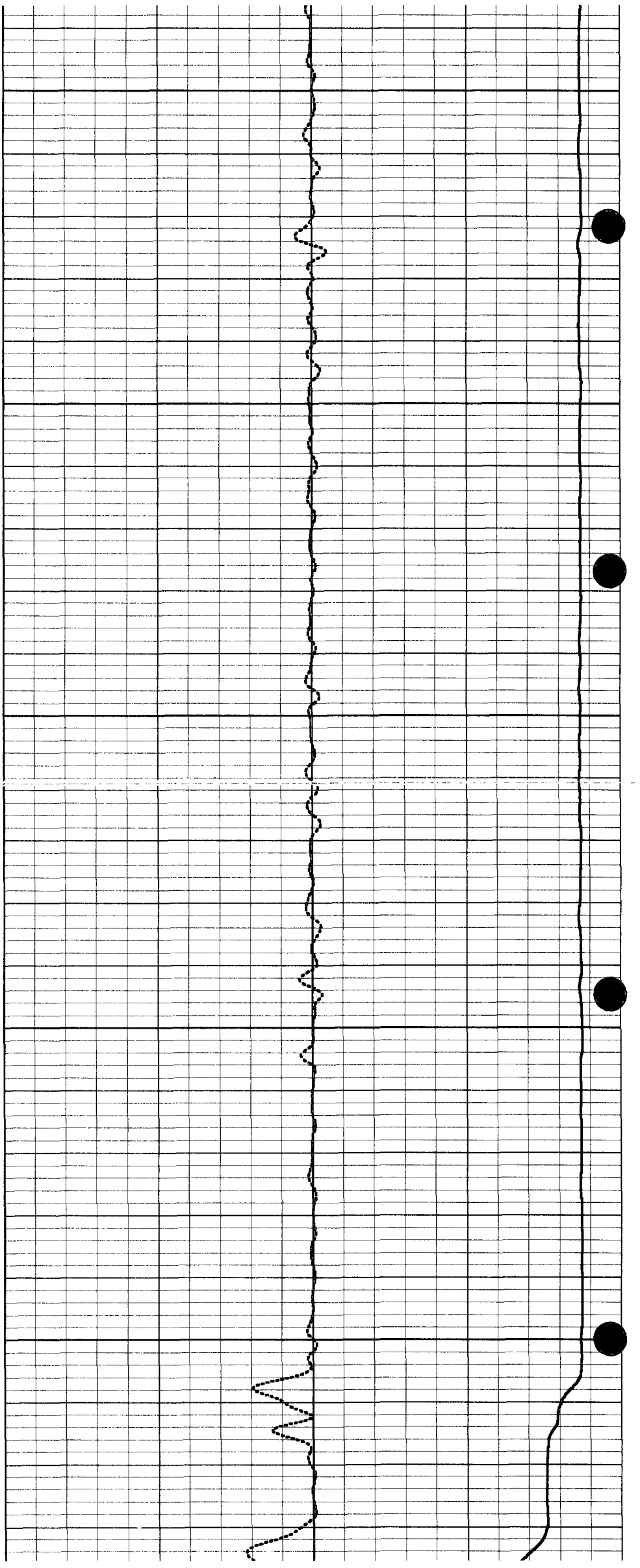
1200

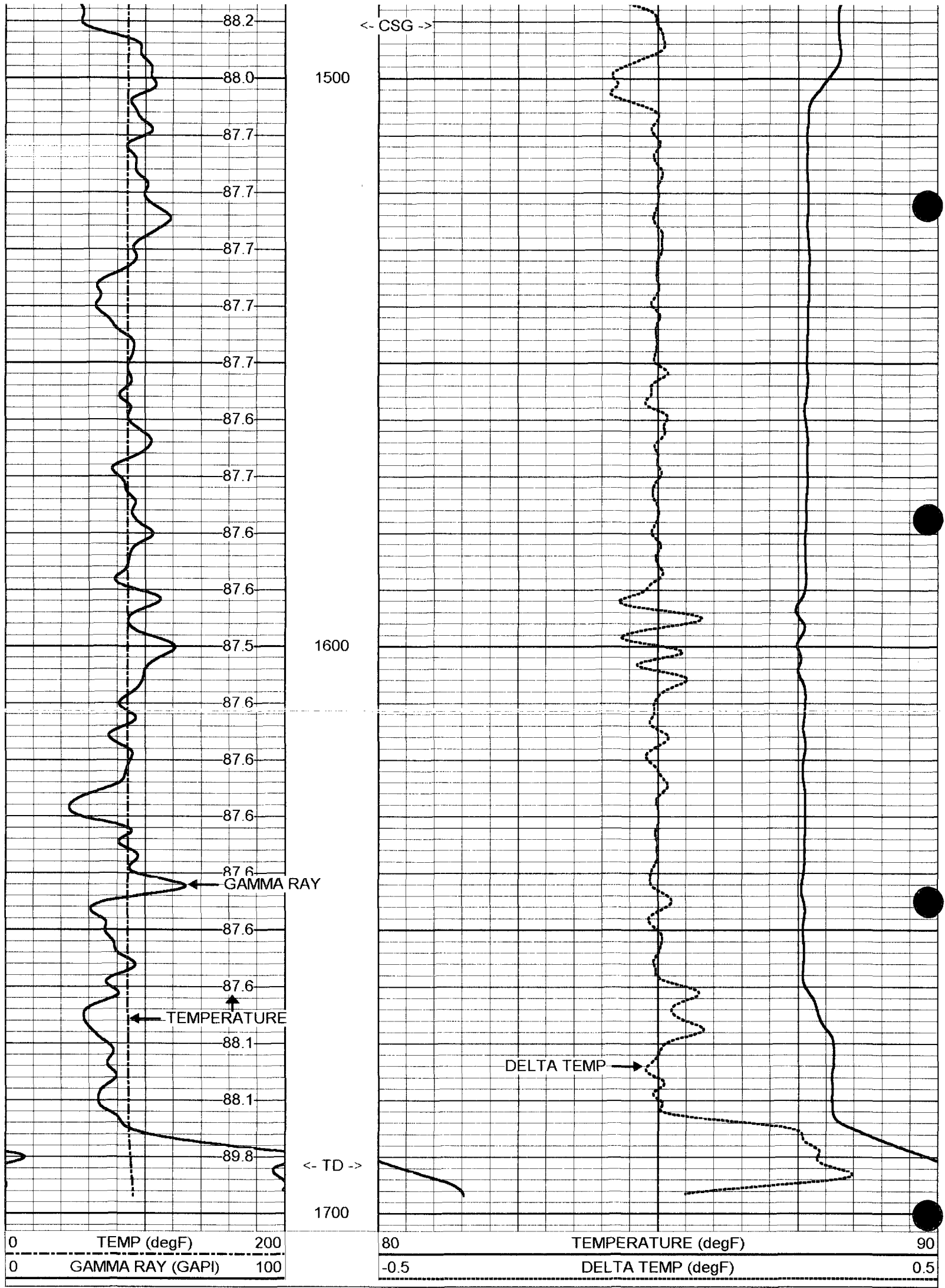




1300

1400





Gamma Ray Calibration Report

Serial Number:  
Tool Model:

MV01B  
RTSR



Performed:	Thu Jul 06 17:00:08 2006	
Calibrator Value:	120	GAPI
Background Reading:	18.181	cps
Calibrator Reading:	188.721	cps
Sensitivity:	0.703647	GAPI/cps

Gamma Ray Calibration Report

Serial Number:	MV01M	
Tool Model:	RTSM	
Performed:	Thu Jul 06 17:00:03 2006	
Calibrator Value:	120	GAPI
Background Reading:	26.3461	cps
Calibrator Reading:	141.241	cps
Sensitivity:	1.04443	GAPI/cps

Gamma Ray Calibration Report

Serial Number:	MV01T	
Tool Model:	RTST	
Performed:	Thu Jul 06 17:00:14 2006	
Calibrator Value:	120	GAPI
Background Reading:	33.2612	cps
Calibrator Reading:	153.283	cps
Sensitivity:	0.999817	GAPI/cps

GR-23 78 ft

GR-RTST (MV01T) 45.00 lb 1.90 in OD 9.67 ft

TREJCT-A (MV01) 10.00 lb 1.90 in OD 3.83 ft

GR#2 10.37 ft

CCL 4.46 ft

GR#3 1.15 ft

TEMP 0.10 ft



GR #3 -RTSM (MV01M) 90.00 lb 1.90 in OD 5.83 ft

CCL-MVGS 1.9 (MV01) 8.00 lb 1.90 in OD 1.33 ft

GR #2 -RTSB (MV01B) 10.00 lb 1.90 in OD 3.33 ft

TEMP-RTS (MV01) 2.00 lb 1.90 in OD 0.46 ft

Dataset: run1/pass2  
Total Length: 24.45 ft  
Total Weight: 165.00 lb  
O.D. 1.90 in