



GEOPHYSICAL LOGGING DIVISION

**YOUNGQUIST BROTHERS, Inc**

**FLUID CONDUCTIVITY TEMPERATURE LOG**

Company CITY OF FT. MYERS  
Well MW-1  
Field CH2M HILL  
County LEE  
State/Prv FLORIDA

Company CITY OF FT. MYERS  
Well MONITOR WELL 1  
Field CH2M HILL  
County LEE  
State/Prv FLORIDA

ROWTTP

Other Services  
SEE  
COMMENTS

Location  
Permanent Datum PAD Elevation 20'  
Log Measured From  
Drilling Measured From  
Elevation  
K.B. D.F. 23.5'  
G.L. 20'

Date	28-MAR-2002
Run Number	FOUR
Depth Driller	1750'
Depth Logger	1750'
Bottom Logged Interval	1750'
Top Log Interval	CASING
Open Hole Size	11"
Type Fluid	WATER
Density / Viscosity	N/A
Max. Recorded Temp.	N/A
Estimated Cement Top	N/A
Time Well Ready	ON ARRIVAL
Time Logger on Bottom	08:00
Equipment Number	103
Location	FT. MYERS
Recorded By	DENISON
Witnessed By	R. DEAN

Borehole Record		Borehole Record					
Run Number	Bit	From	To	Ru Number	Bit	From	To
ONE	12.25"	SURFACE	460'				
THREE	12.25"	CASING	1250'				
FOUR	22"	CASING	1256'				
FIVE	11"	CASING	1750'				

Casing Record		Top		Bottom	
Surface String	Size	Wgt/Ft	Top	Bottom	
Prod. String	24"	.375	SURFACE	450'	
Production String	16"	.500	SURFACE	1250'	
Liner					


<<< Fold Here >>>

All interpretations are opinions based on inferences from electrical or other measurements and we cannot and do not guarantee the accuracy or correctness of any interpretation, and we shall not, except in the case of gross or willful negligence on our part, be liable or responsible for any loss, costs, damages, or expenses incurred or sustained by anyone resulting from any interpretation made by any of our officers, agents or employees. These interpretations are also subject to our general terms and conditions set out in our current Price Schedule.

Comments

DYNAMIC FLOWRATE = 66 GPM

OTHER SERVICES:  
X-Y CALIPER/GAMMA RAY  
DUAL INDUCTION  
BOREHOLE COMPENSATED SONIC  
FLOWMETER



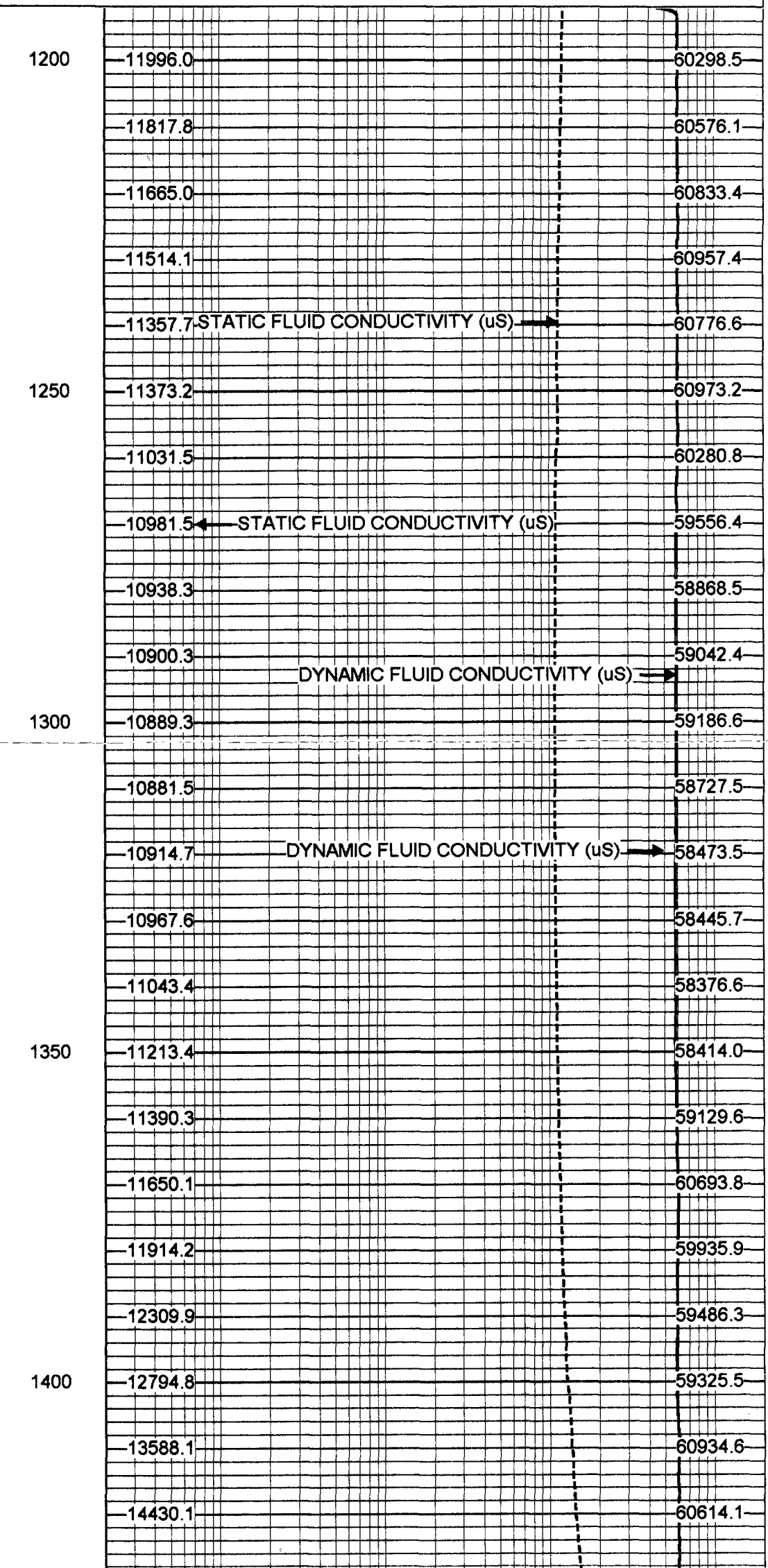
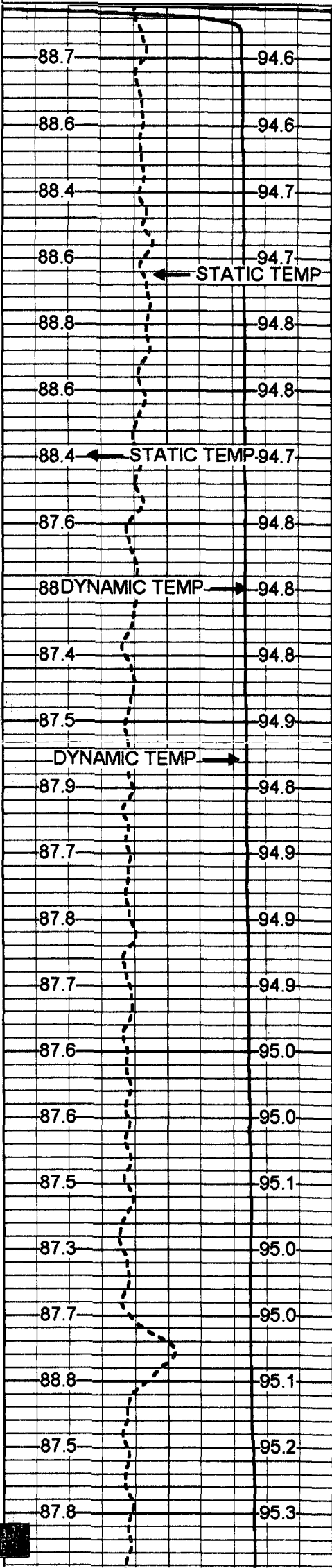
**YOUNGQUIST BROTHERS, Inc**  
GEOPHYSICAL LOGGING DIVISION

**MERGED COND/TEMP**

Database File: ftmmw1.db  
Dataset Pathname: run4/pass16  
Presentation Format: frt\_mg.prs  
Dataset Creation: Thu Mar 28 17:21:33 2002 by Log VER 5.4

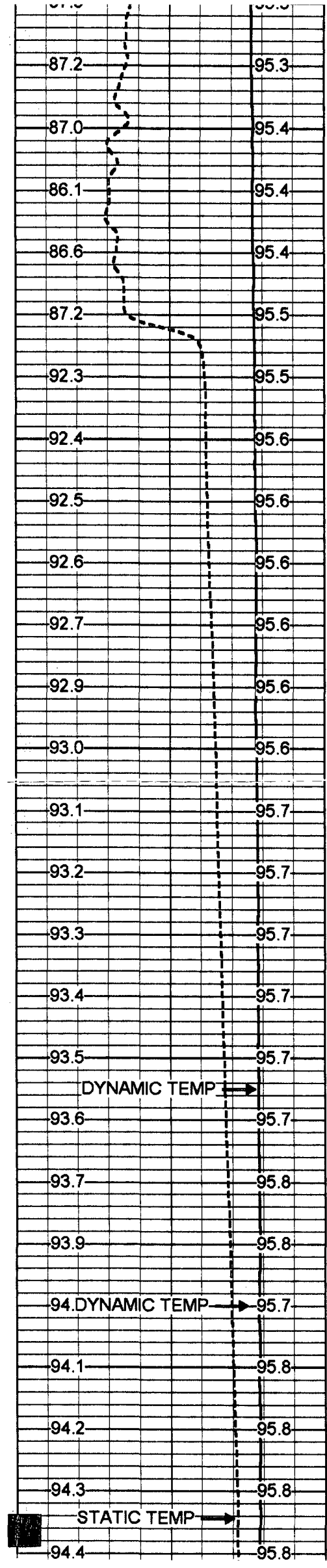
80	STATIC TEMP (degF)	100
80	DYNAMIC TEMP (degF)	100

20	STATIC FLUID CONDUCTIVITY	200000
20	DYNAMIC FLUID CONDUCTIVITY	200000



88.7	94.6	1200
88.6	94.6	
88.4	94.7	
88.6	94.7	
88.8	94.8	
88.6	94.8	1250
88.4	94.7	
87.6	94.8	
88	94.8	
87.4	94.8	
87.5	94.9	1300
87.9	94.8	
87.7	94.9	
87.8	94.9	
87.7	94.9	
87.6	95.0	1350
87.6	95.0	
87.5	95.1	
87.3	95.0	
87.7	95.0	
88.8	95.1	1400
87.5	95.2	
87.8	95.3	

11996.0	60298.5	1200
11817.8	60576.1	
11665.0	60833.4	
11514.1	60957.4	
11357.7	60776.6	
11373.2	60973.2	1250
11031.5	60280.8	
10981.5	59556.4	
10938.3	58868.5	
10900.3	59042.4	
10889.3	59186.6	1300
10881.5	58727.5	
10914.7	58473.5	
10967.6	58445.7	
11043.4	58376.6	
11213.4	58414.0	1350
11390.3	59129.6	
11650.1	60693.8	
11914.2	59935.9	
12309.9	59486.3	
12794.8	59325.5	1400
13588.1	60934.6	
14430.1	60614.1	



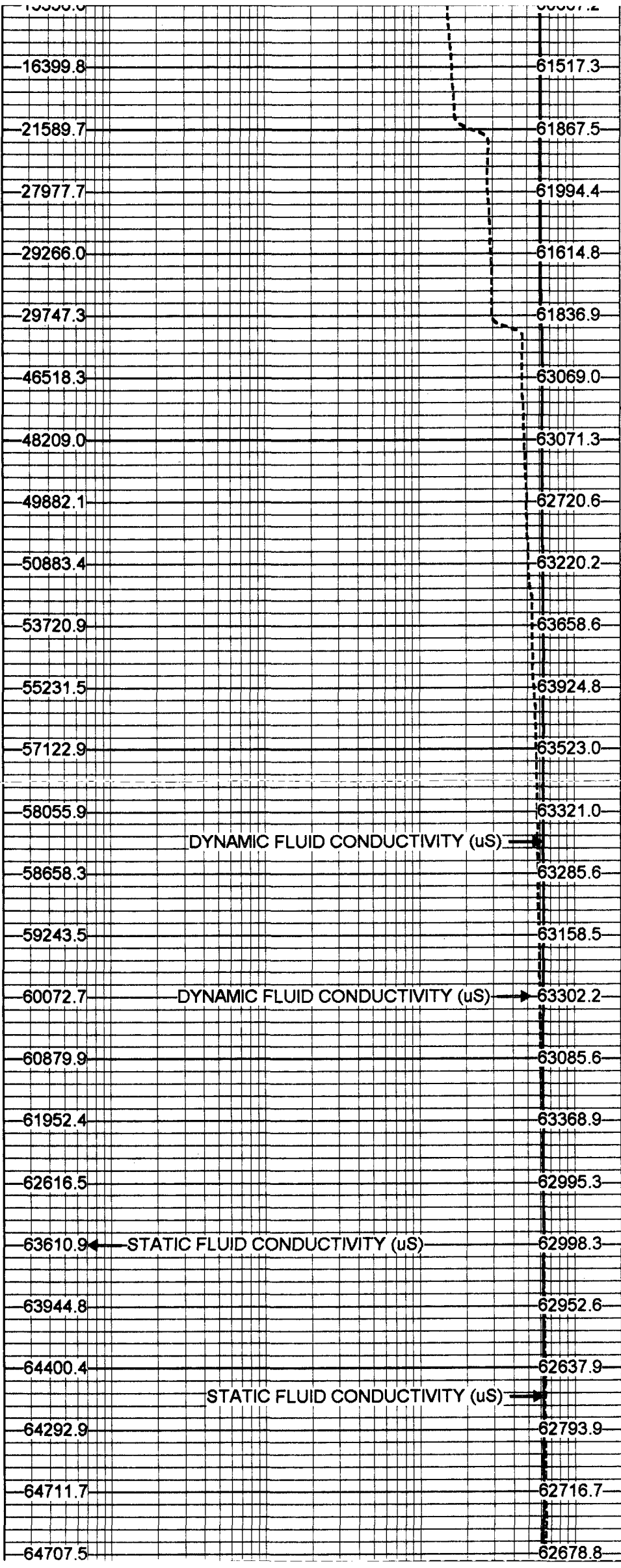
1450

1500

1550

1600

1650



DYNAMIC FLUID CONDUCTIVITY (uS)

DYNAMIC FLUID CONDUCTIVITY (uS)

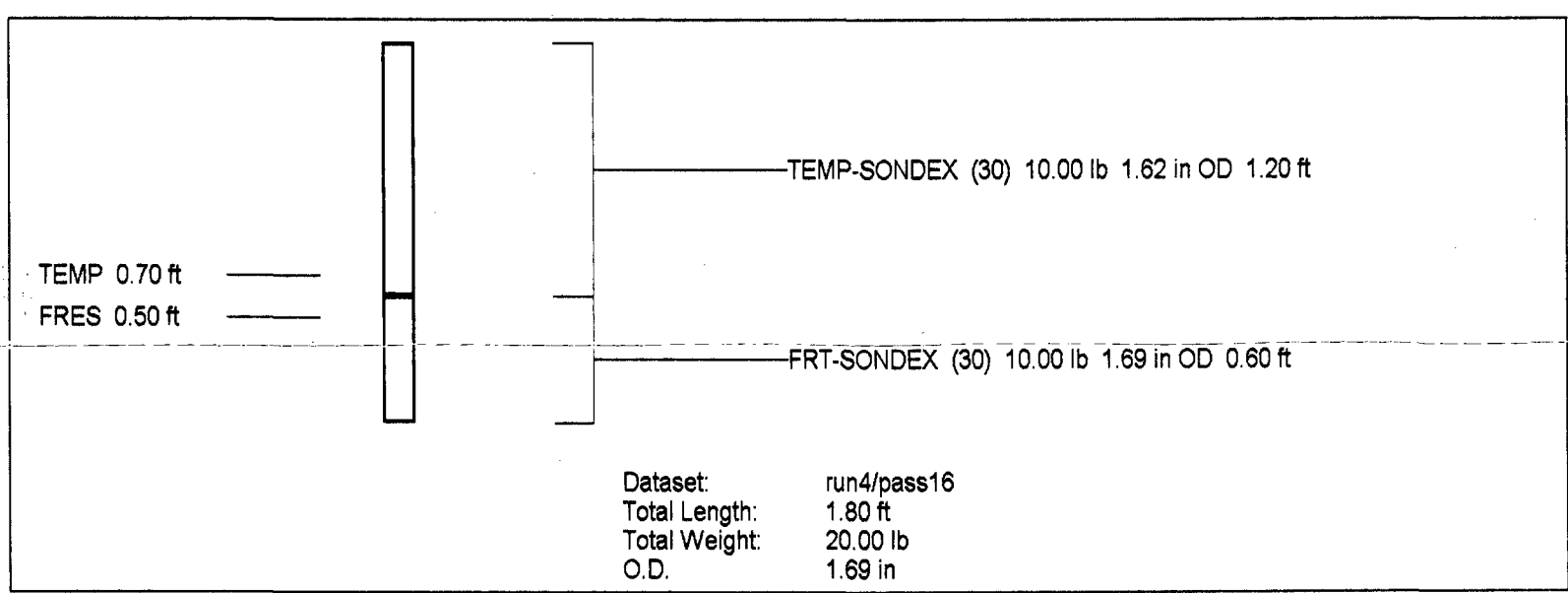
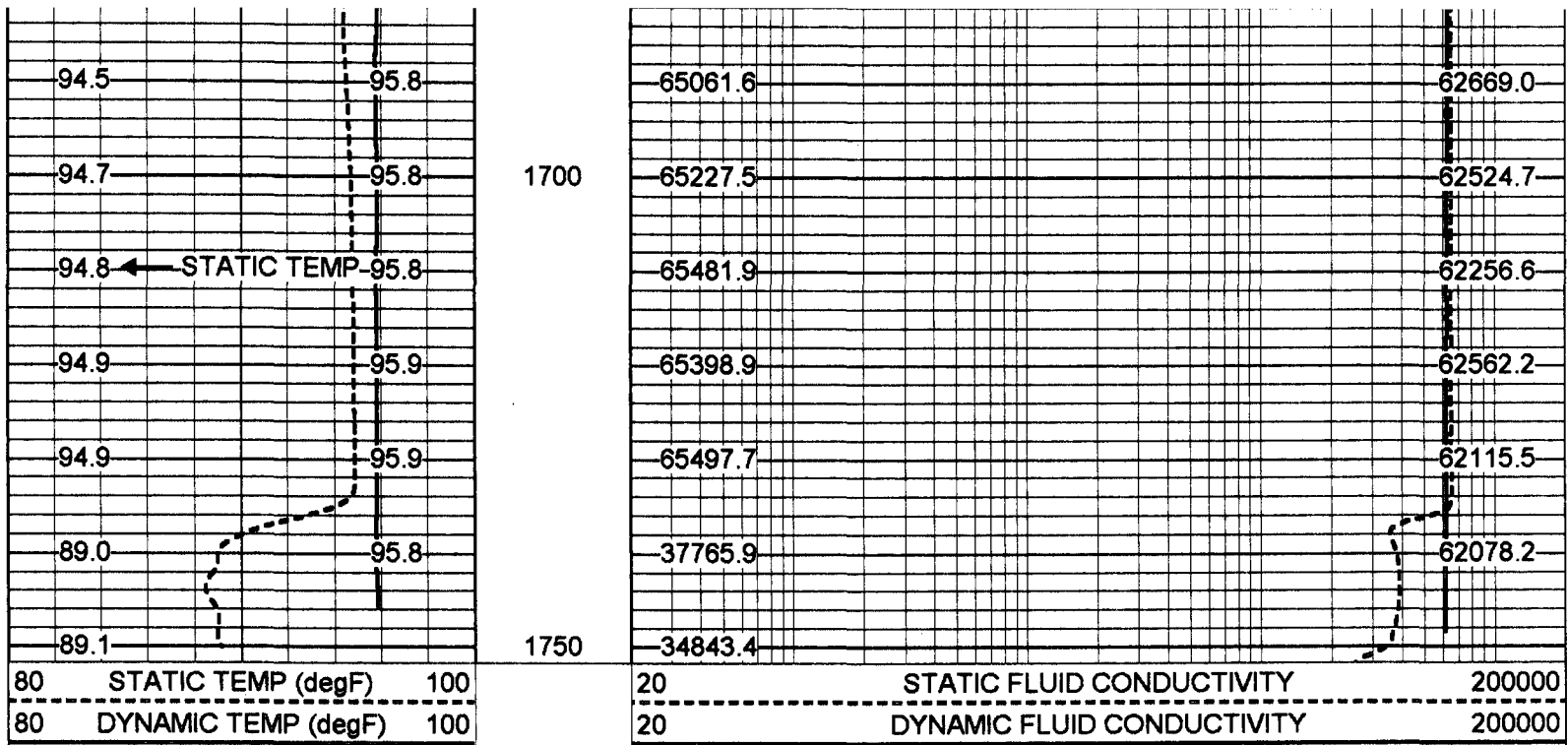
STATIC FLUID CONDUCTIVITY (uS)

STATIC FLUID CONDUCTIVITY (uS)

DYNAMIC TEMP

94.DYNAMIC TEMP

STATIC TEMP



### Temperature Calibration Report

Serial Number: 30  
 Tool Model: SONDEX  
 Performed: Mon May 07 15:43:28 2001

Point #	Reading	Reference
1	113.926 cps	33 degF
2	659.964 cps	140 degF
3	cps	degF
4	cps	degF
5	cps	degF
6	cps	degF
7	cps	degF
8	cps	degF
9	cps	degF
10	cps	degF