



YOUNGQUIST BROTHERS, Inc
GEOPHYSICAL LOGGING DIVISION

FLUID CONDUCTIVITY TEMPERATURE LOG

RECORDED

DEPT. 11-2001

DEEP - SAND District

Company CITY OF FT. MYERS
Well IW-1
Field CH2M HILL
County LEE
State FLORIDA

Company CITY OF FT. MYERS
Well IW-1
Field CH2M HILL
County LEE
State FLORIDA

ROWTP

Location
Permanent Datum PAD
Log Measured From
Drilling Measured From

Elevation 20'

Other Services
SEE COMMENTS
Elevation
K.B. D.F. 23.5'
G.L. 20'

Date	11/27/01
Run Number	THREE
Depth Driller	1800'
Depth Logger	1802'
Bottom Logged Interval	1802'
Top Log Interval	SURFACE
Open Hole Size	12.25"
Type Fluid	WATER
Density / Viscosity	N/A
Max. Recorded Temp.	98 DEGF
Estimated Cement Top	N/A
Time Well Ready	ON ARRIVAL
Time Logger on Bottom	1430
Equipment Number	103
Location	FT. MYERS DENISON
Recorded By	R. DEAN
Witnessed By	

Borehole Record		Tubing Record	
Run Number	Bit Size	From	To
ONE	12.25" SURFACE		460'
TWO	42.5" SURFACE		462'

Casing Record		Tubing Record	
Surface String	Size	Wgt./ft	Top
Prod. String	36"	.375	SURFACE
Production String			Bottom
Liner			450'

<<< Fold Here >>>

All interpretations are opinions based on inferences from electrical or other measurements and we cannot and do not guarantee the accuracy or correctness of any interpretation, and we shall not, except in the case of gross or willful negligence on our part, be liable or responsible for any loss, costs, damages, or expenses incurred or sustained by anyone resulting from any interpretation made by any of our officers, agents or employees. These interpretations are also subject to our general terms and conditions set out in our current Price Schedule.

Comments

DYNAMIC FLOWRATE = 400 GPM

OTHER SERVICES:
X-Y CALIPER/GAMMA RAY
DUAL INDUCTION/LL3/SP
BOREHOLE COMPENSATED SONIC FLOWMETER
VIDEO

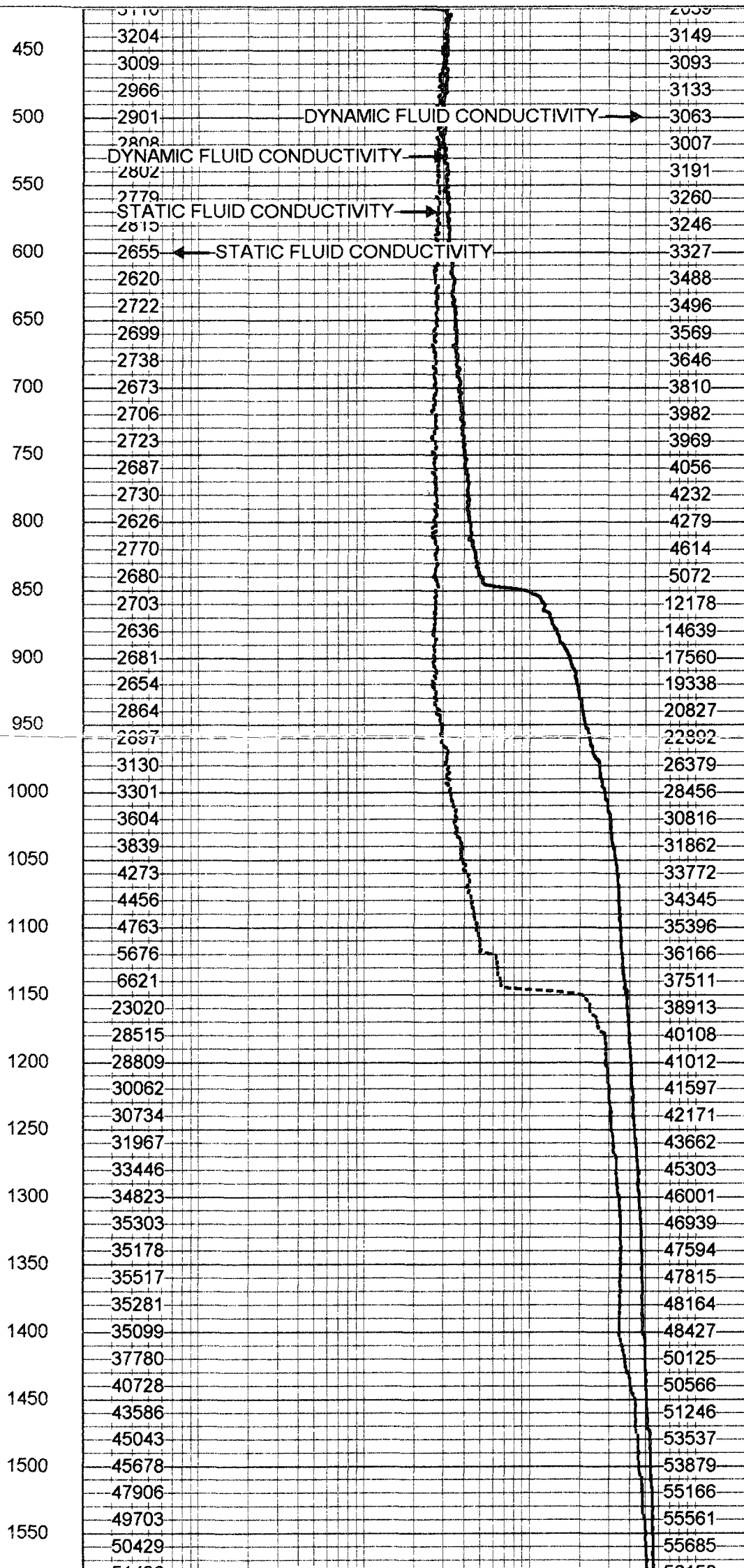
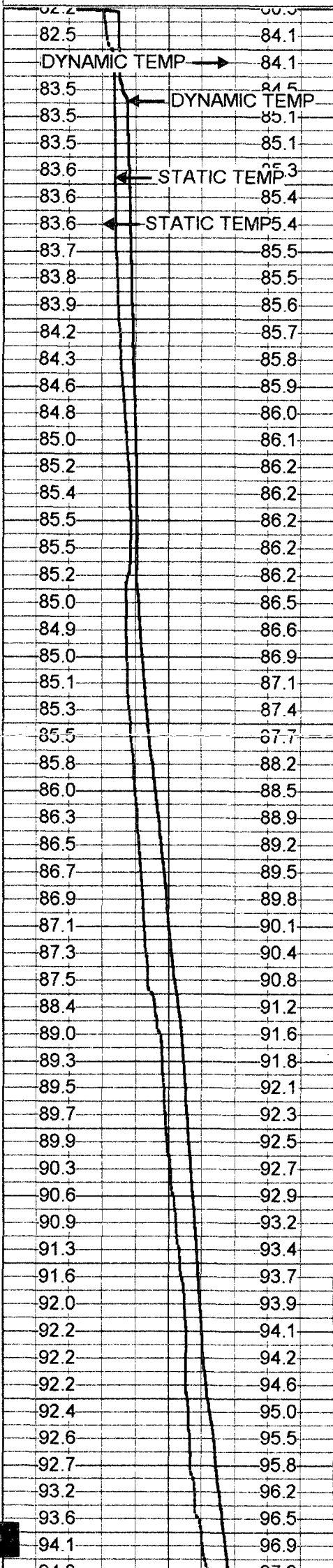


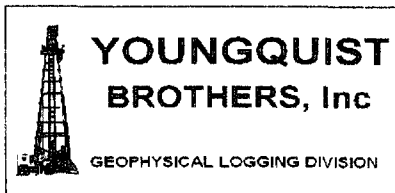
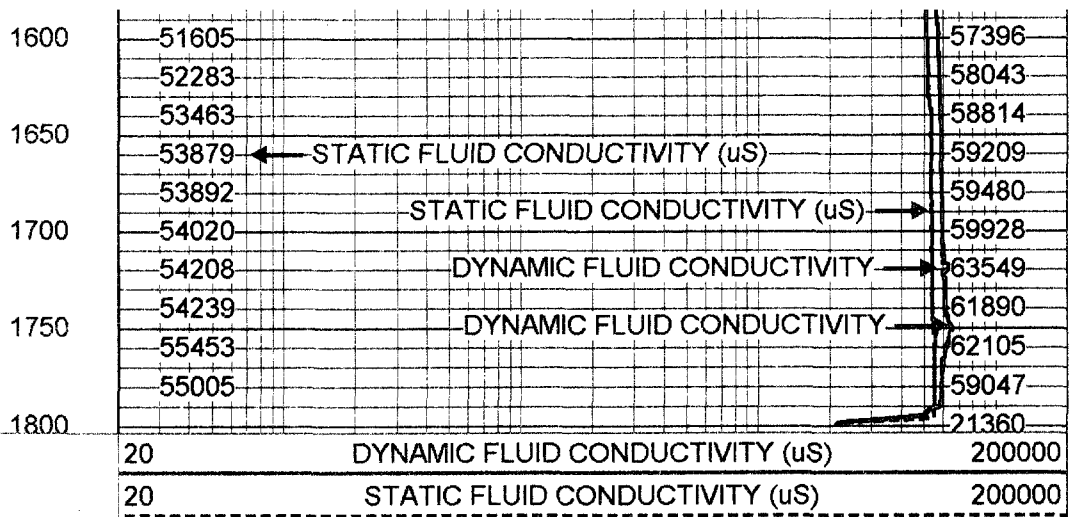
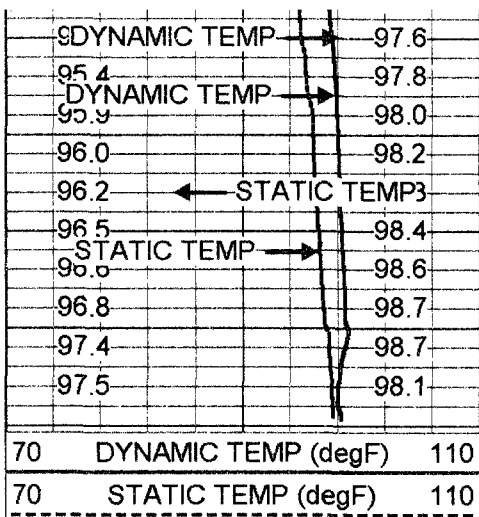
MERGED FLUID COND/TEMP

Database File: ftmdiw.db
Dataset Pathname: run3/pass20
Presentation Format: frt_mg.prs

70 DYNAMIC TEMP (degF) 110
 70 STATIC TEMP (degF) 110

20 DYNAMIC FLUID CONDUCTIVITY (uS) 200000
 20 STATIC FLUID CONDUCTIVITY (uS) 200000



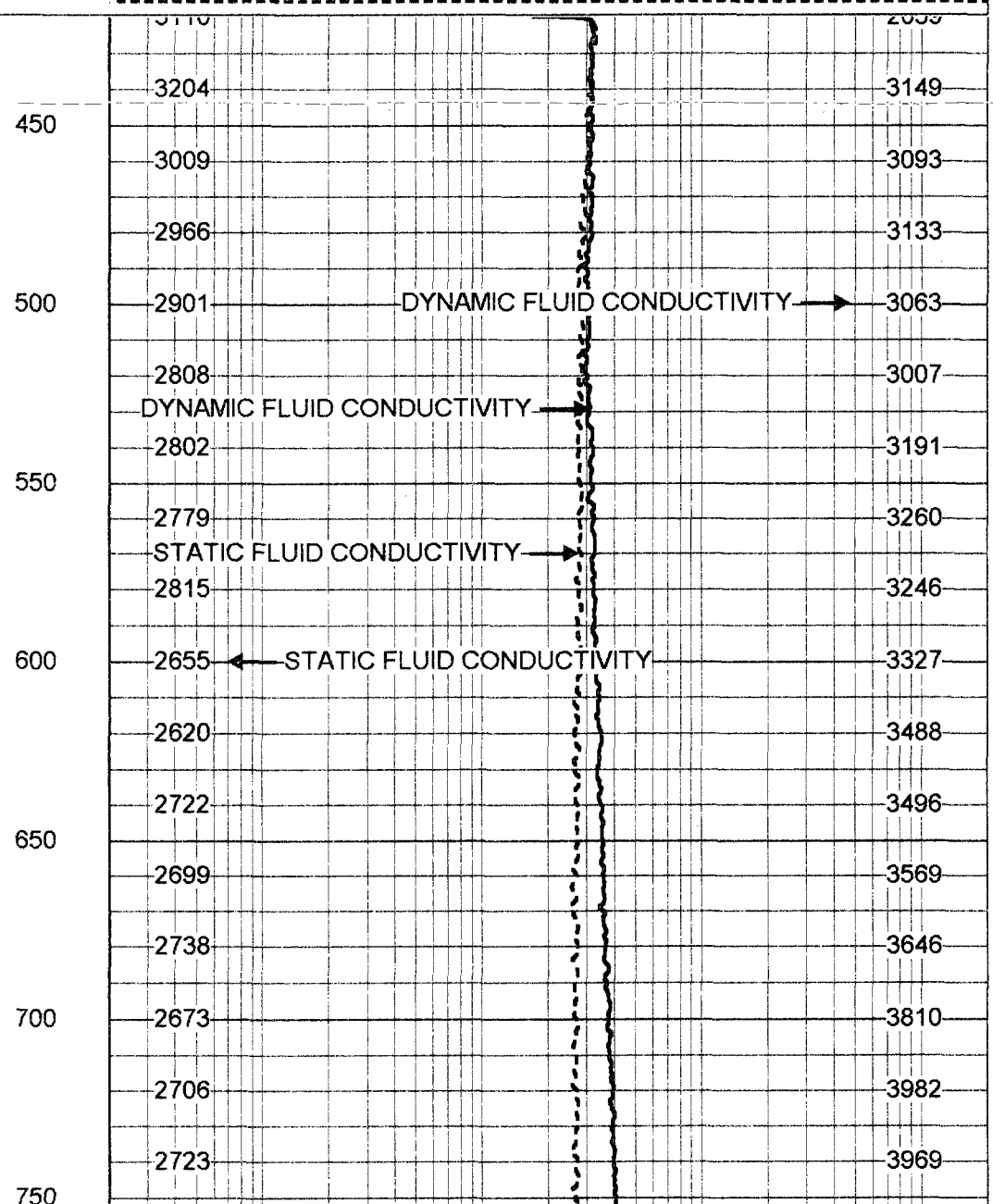
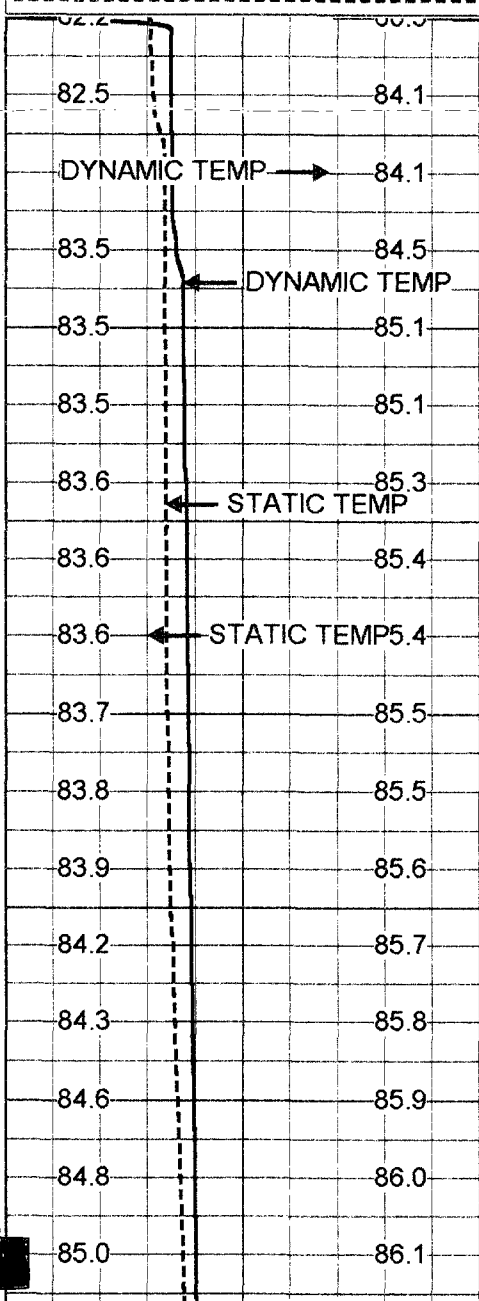


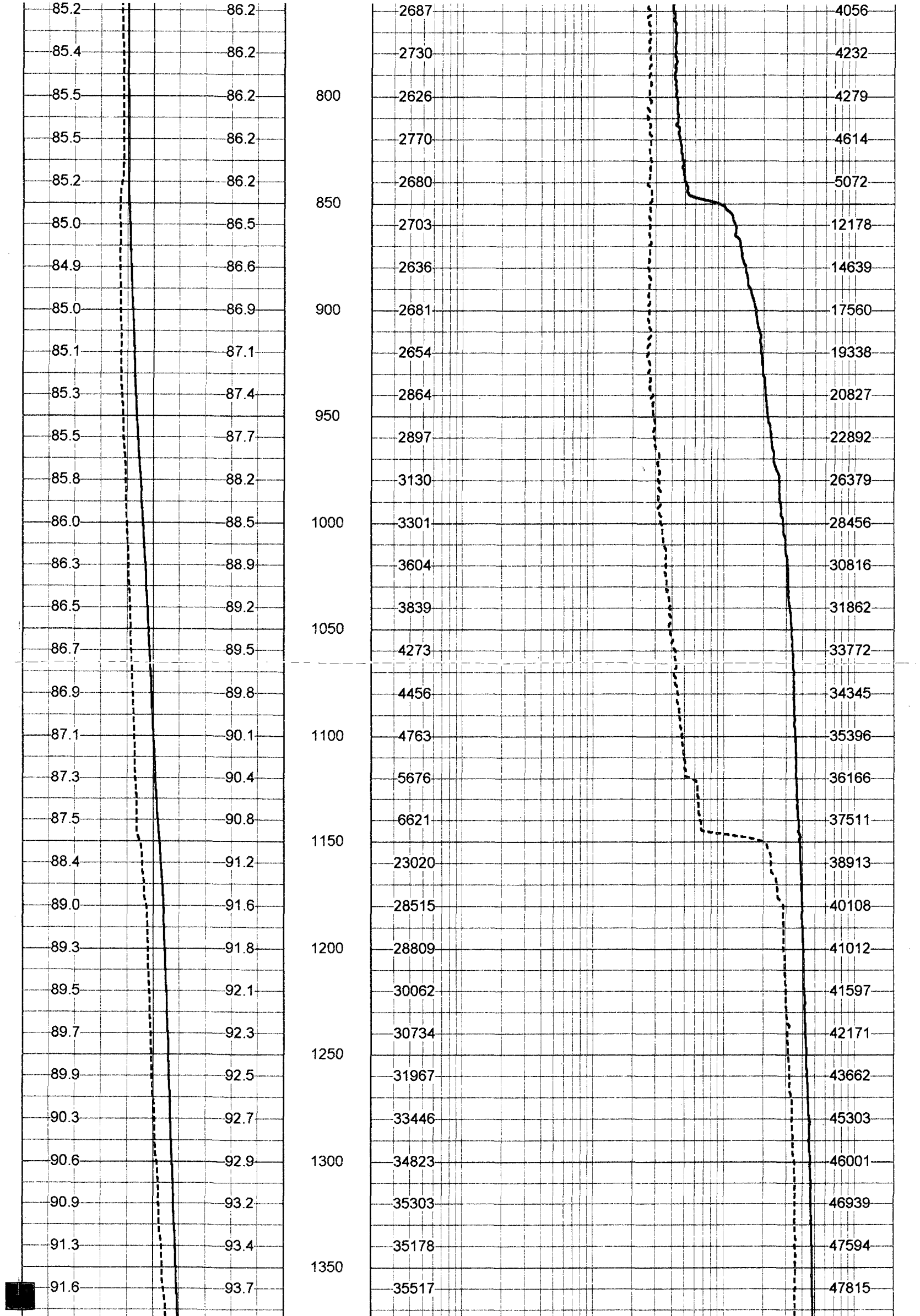
MERGED FLUID COND/TEMP

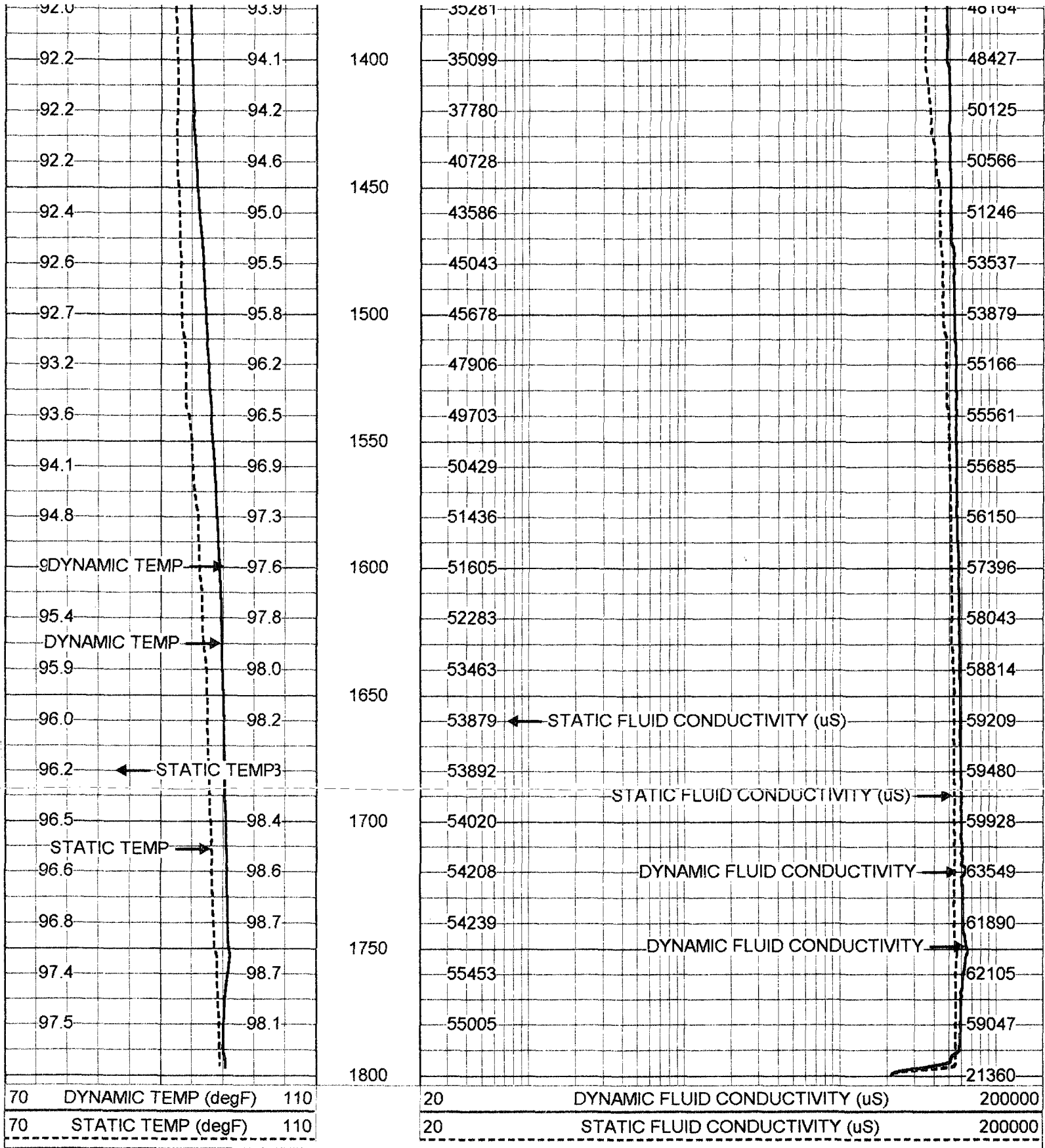
Database File: ftm diw.db
 Dataset Pathname: run3/pass20
 Presentation Format: frt_mg.prs
 Dataset Creation: Wed Nov 28 02:23:18 2001 by Log VER_5.4
 Charted by: Depth in Feet scaled 1:600

70	DYNAMIC TEMP (degF)	110
70	STATIC TEMP (degF)	110

20	DYNAMIC FLUID CONDUCTIVITY (uS)	200000
20	STATIC FLUID CONDUCTIVITY (uS)	200000





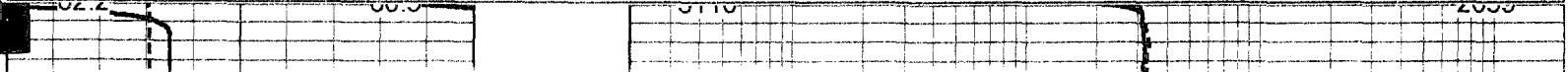


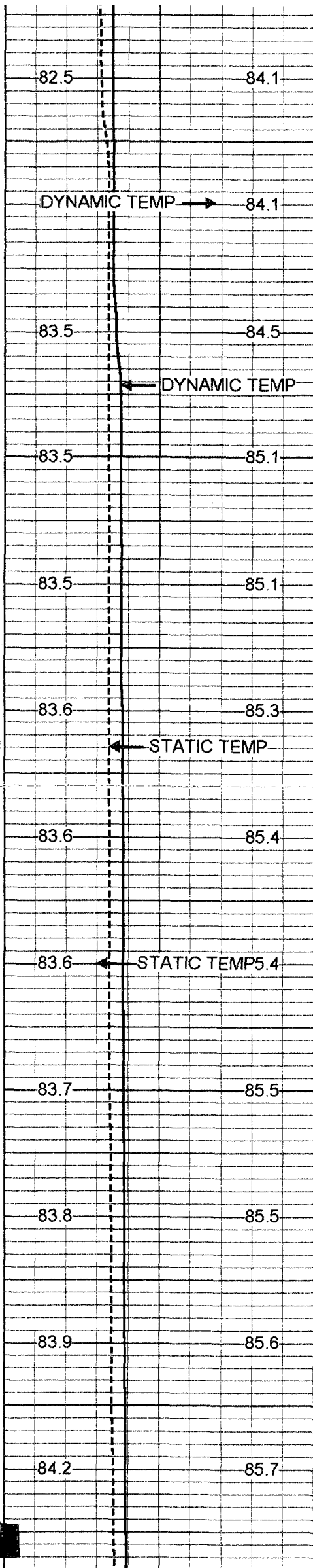
YOUNGQUIST BROTHERS, Inc
 GEOPHYSICAL LOGGING DIVISION

MERGED FLUID COND/TEMP

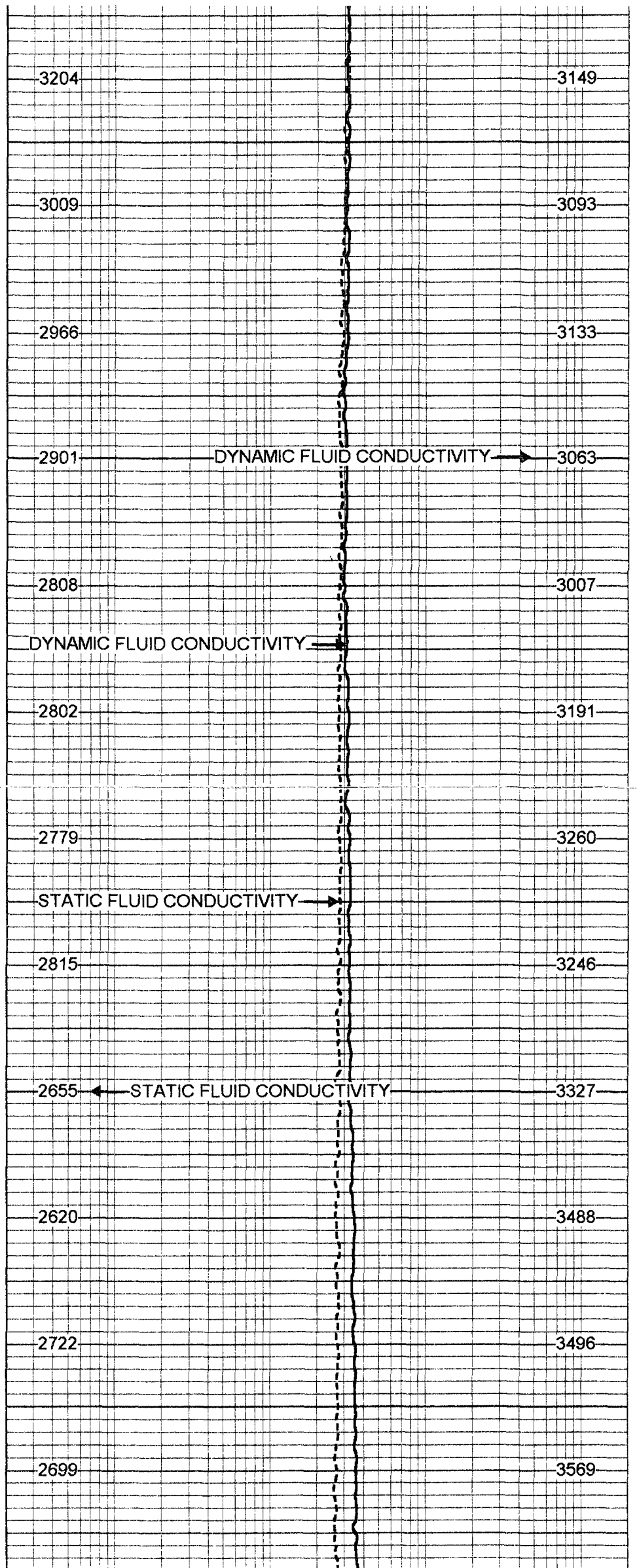
Database File: ftm diw.db
 Dataset Pathname: run3/pass20
 Presentation Format: frt_mg.prs
 Dataset Creation: Wed Nov 28 02:23:18 2001 by Log VER_5.4
 Charted by: Depth in Feet scaled 1:240

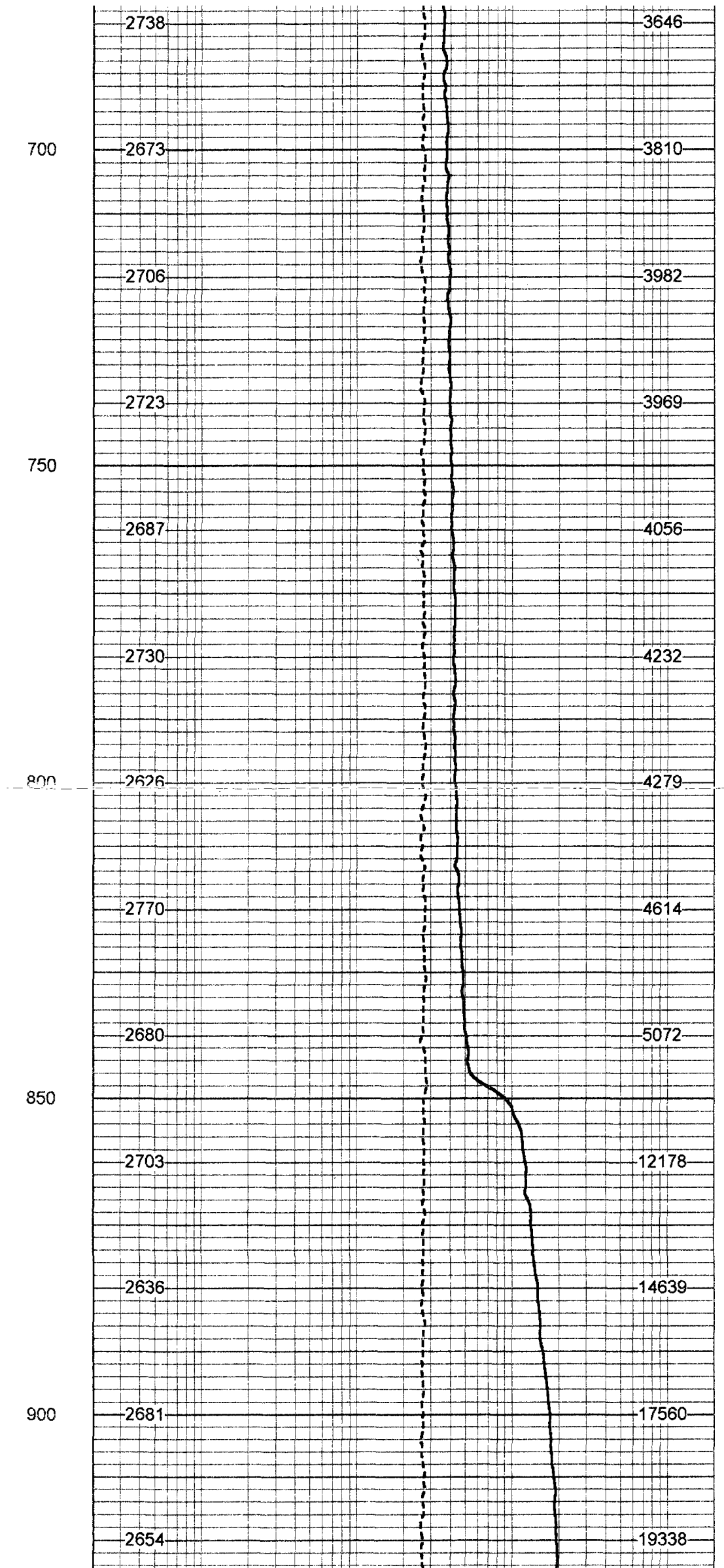
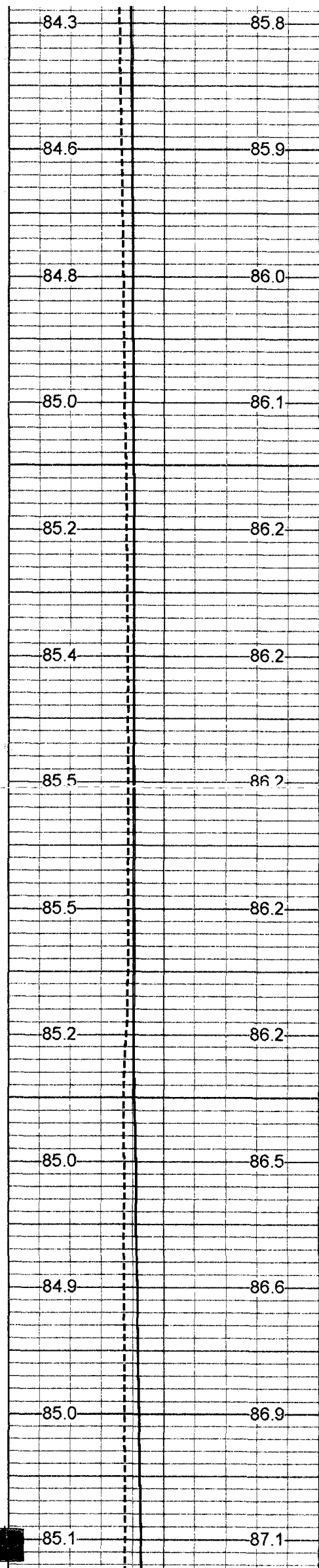
70	DYNAMIC TEMP (degF)	110	20	DYNAMIC FLUID CONDUCTIVITY (uS)	200000
70	STATIC TEMP (degF)	110	20	STATIC FLUID CONDUCTIVITY (uS)	200000

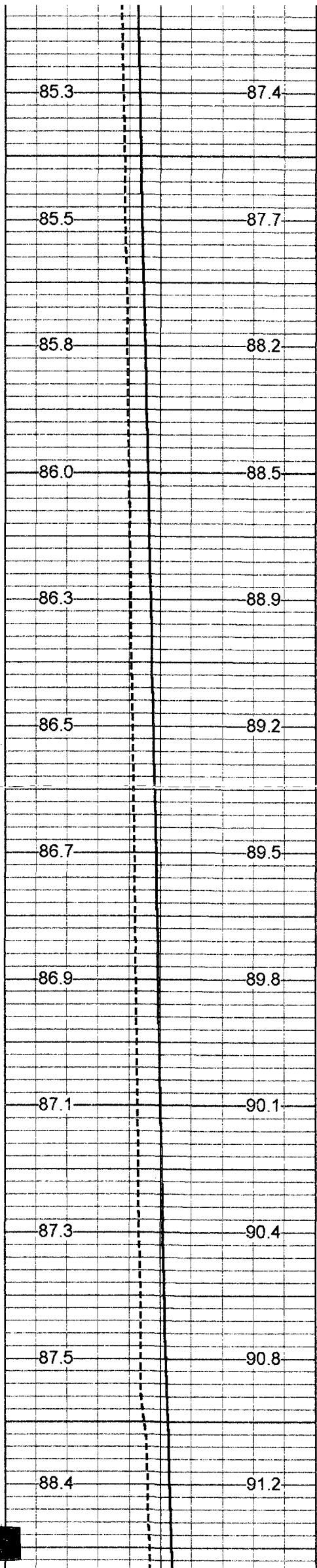




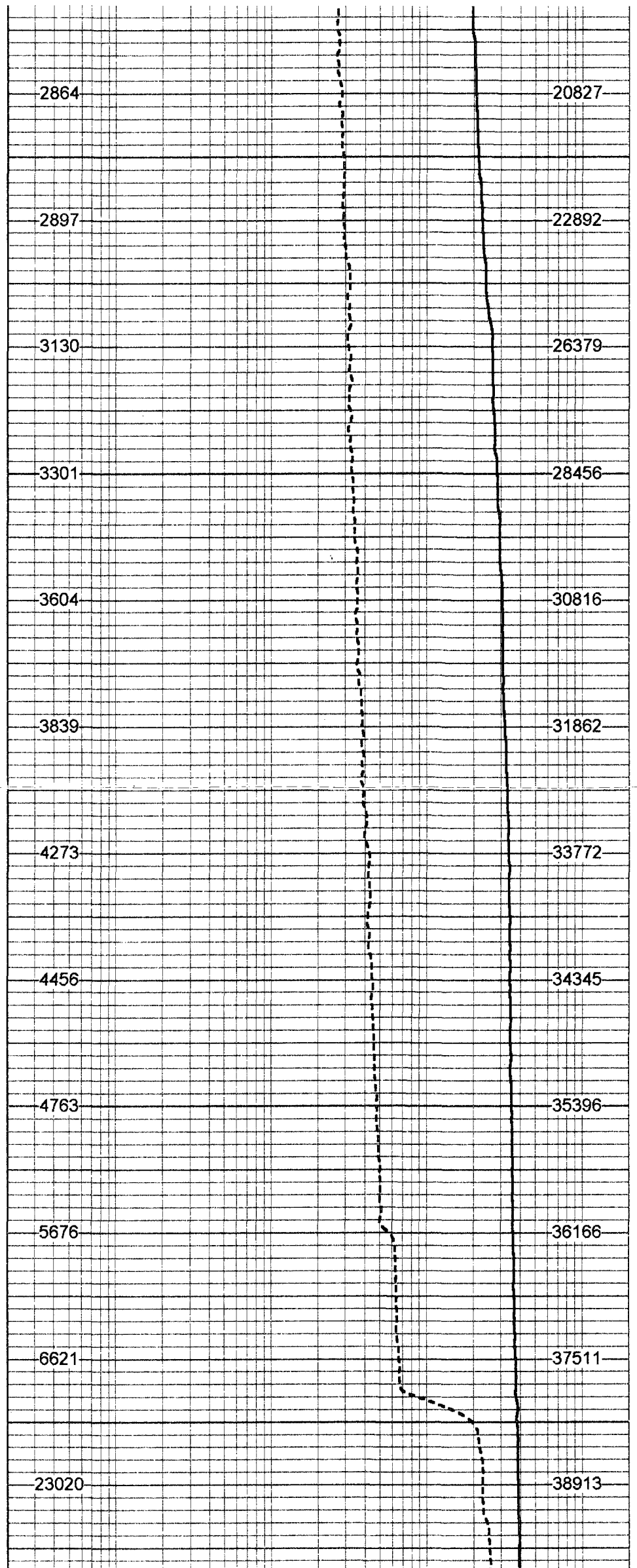
450
500
550
600
650

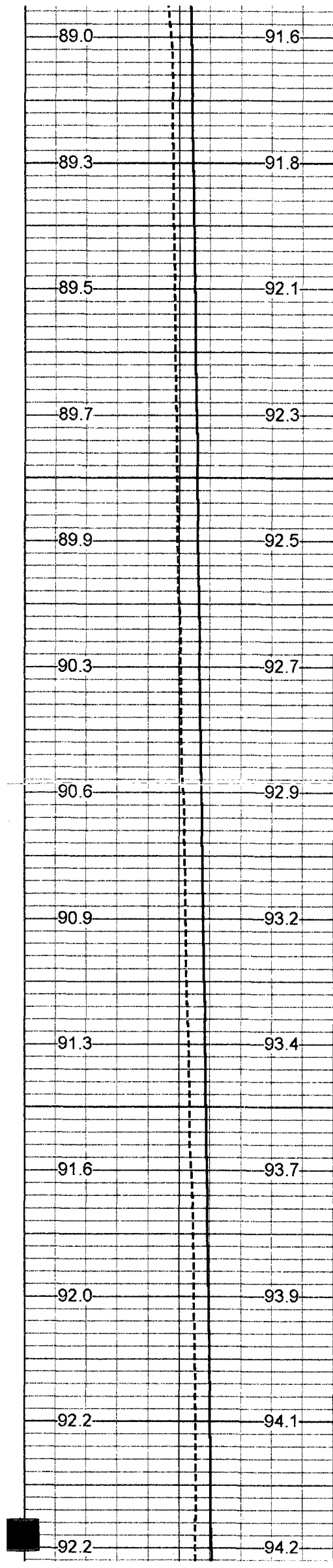






950
1000
1050
1100
1150





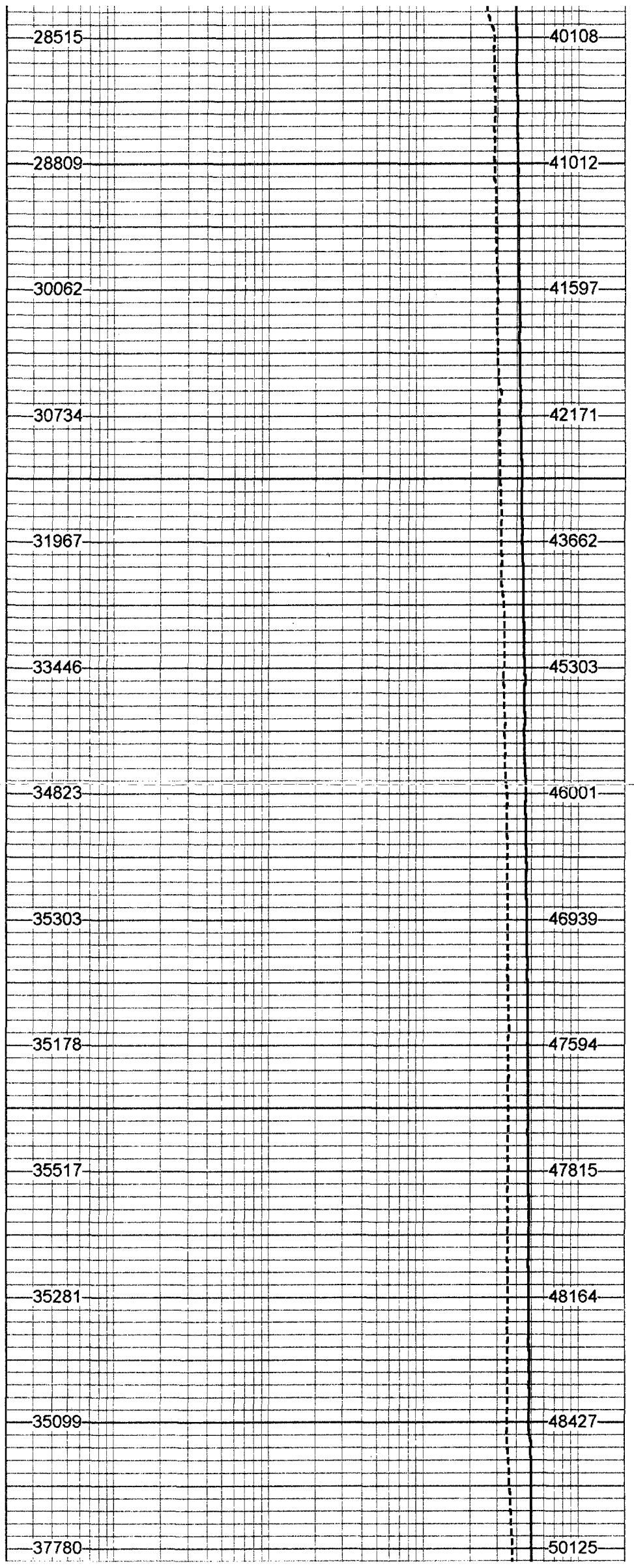
1200

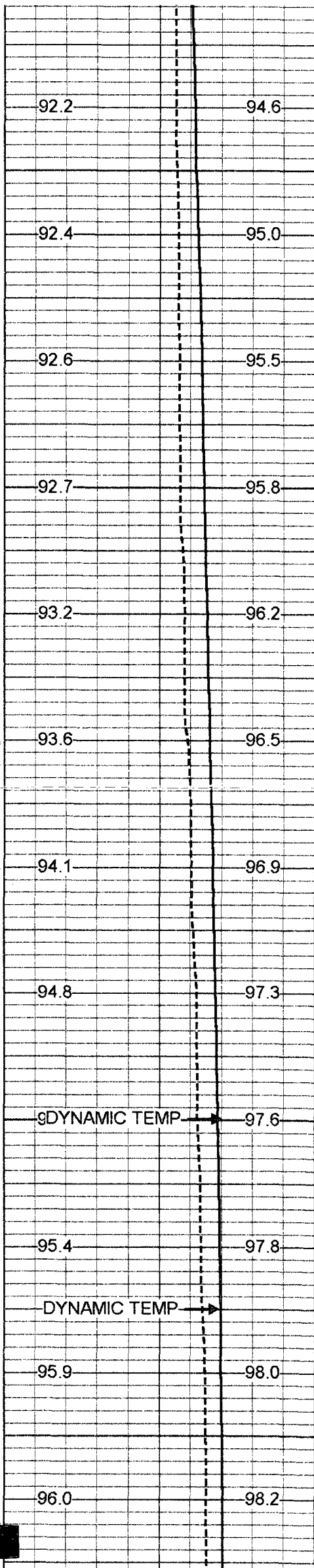
1250

1300

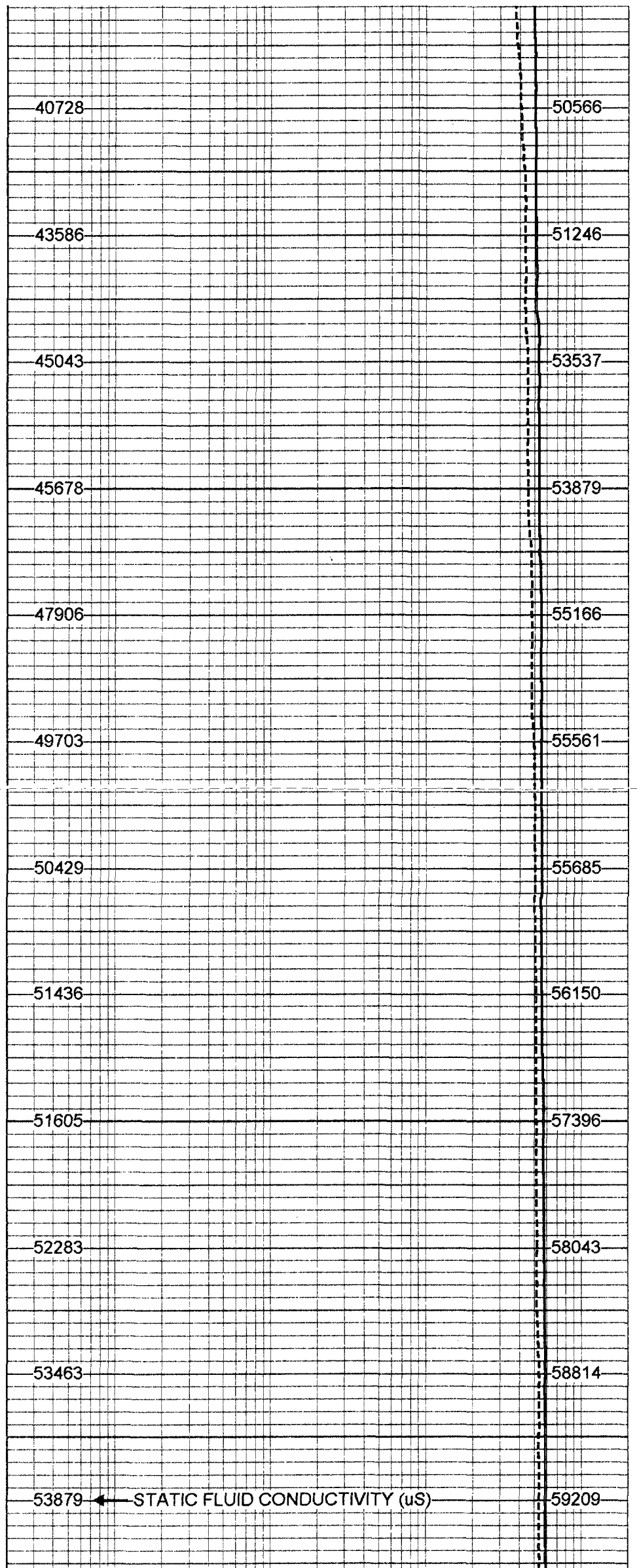
1350

1400

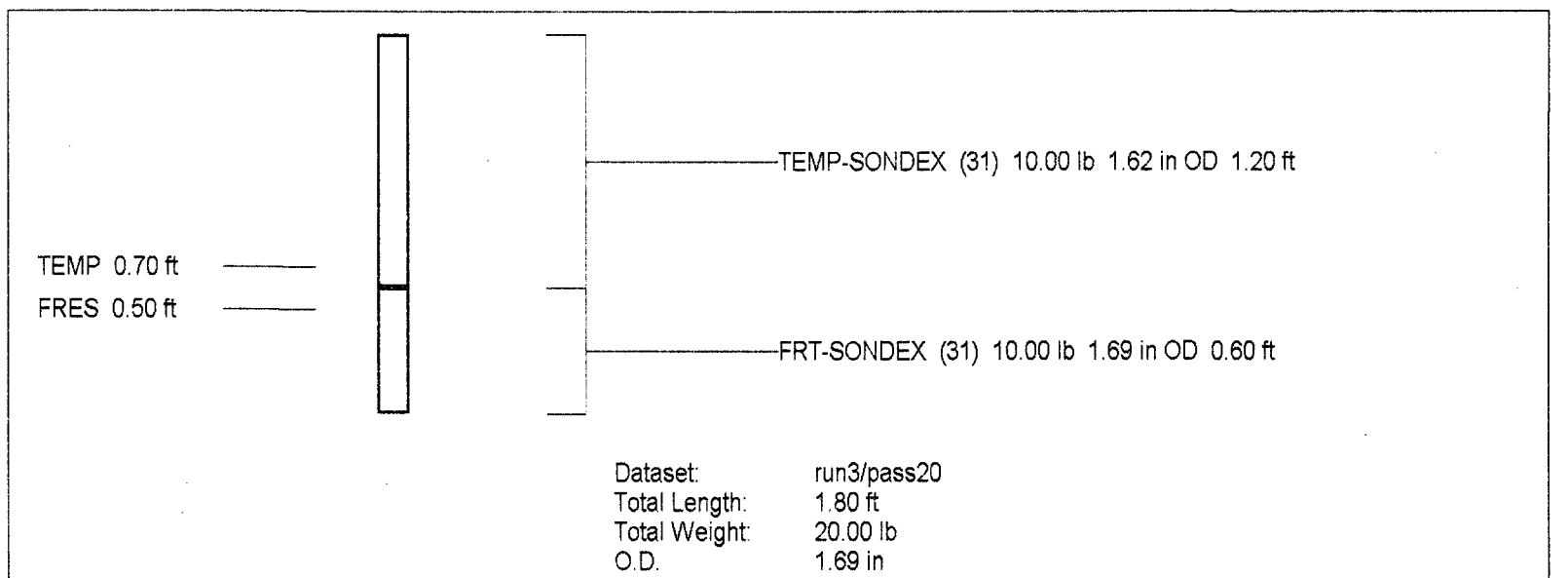
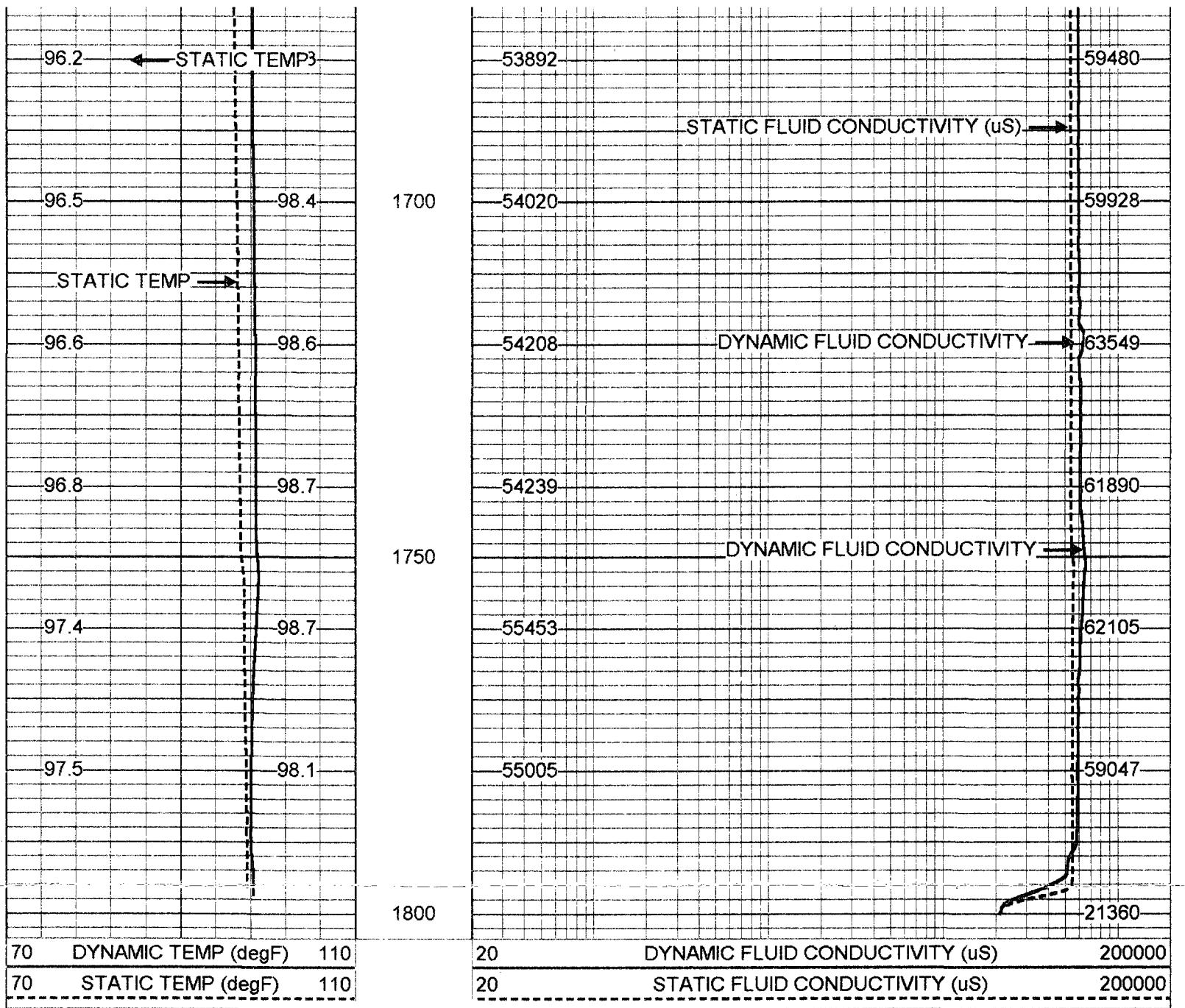




1450
1500
1550
1600
1650



← STATIC FLUID CONDUCTIVITY (uS)



FRT Calibration Report		
Serial Number:	31	
Tool Model:	SONDEX	
Performed:	Mon May 07 10:39:40 2001	
Point #	Reading	Reference

1	33.812	cps	1000.000
2	186.494	cps	10000.000
3	963.690	cps	50000.000
4		cps	
5		cps	
6		cps	

Temperature Calibration Report

Serial Number: 31
Tool Model: SONDEX
Performed: Mon May 07 15:54:58 2001

Point #	Reading		Reference	
1	120.679	cps	34	degF
2	582.95	cps	135	degF
3		cps		degF