



YOUNGQUIST BROTHERS, Inc
GEOPHYSICAL LOGGING DIVISION

FLUID CONDUCTIVITY TEMPERATURE LOG

Company CITY OF FT. MYERS
Well IW-1
Field CH2M HILL
County LEE
State FLORIDA

Company CITY OF FT. MYERS
Well IW-1
Field CH2M HILL
County LEE
State FLORIDA

Location ROWTTP
Permanent Datum PAD
Log Measured From Elevation 20'
Drilling Measured From
Other Services SEE COMMENTS
Elevation K.B. D.F. 23.5' G.L. 20'

Date	11/27/01
Run Number	THREE
Depth Driller	1800'
Depth Logger	1802'
Bottom Logged Interval	1802'
Top Log Interval	SURFACE
Open Hole Size	12.25"
Type Fluid	WATER
Density / Viscosity	N/A
Max. Recorded Temp.	98 DEGF
Estimated Cement Top	N/A
Time Well Ready	ON ARRIVAL
Time Logger on Bottom	1430
Equipment Number	103
Location	FT. MYERS DENISON
Recorded By	R. DEAN
Witnessed By	

Borehole Record		Tubing Record	
Run Number	Bit Size	From	To
ONE	12.25"	SURFACE	460'
TWO	42.5"	SURFACE	462'

Casing Record		Surface String		Prod. String		Production String		Liner	
Size	Wgt/ft	Top	Bottom	From	To	From	To	From	To
36"	37.5	SURFACE	450'						

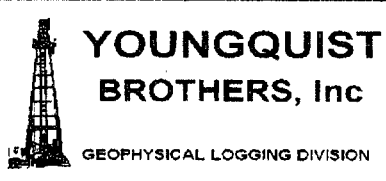
<<< Fold Here >>>

All interpretations are opinions based on inferences from electrical or other measurements and we cannot and do not guarantee the accuracy or correctness of any interpretation, and we shall not, except in the case of gross or willful negligence on our part, be liable or responsible for any loss, costs, damages, or expenses incurred or sustained by anyone resulting from any interpretation made by any of our officers, agents or employees. These interpretations are also subject to our general terms and conditions set out in our current Price Schedule.

Comments

DYNAMIC FLOWRATE = 400 GPM

OTHER SERVICES:
X-Y CALIPER/GAMMA RAY
DUAL INDUCTION/LL3/SP
BOREHOLE COMPENSATED SONIC FLOWMETER
VIDEO



MERGED FLUID COND/TEMP

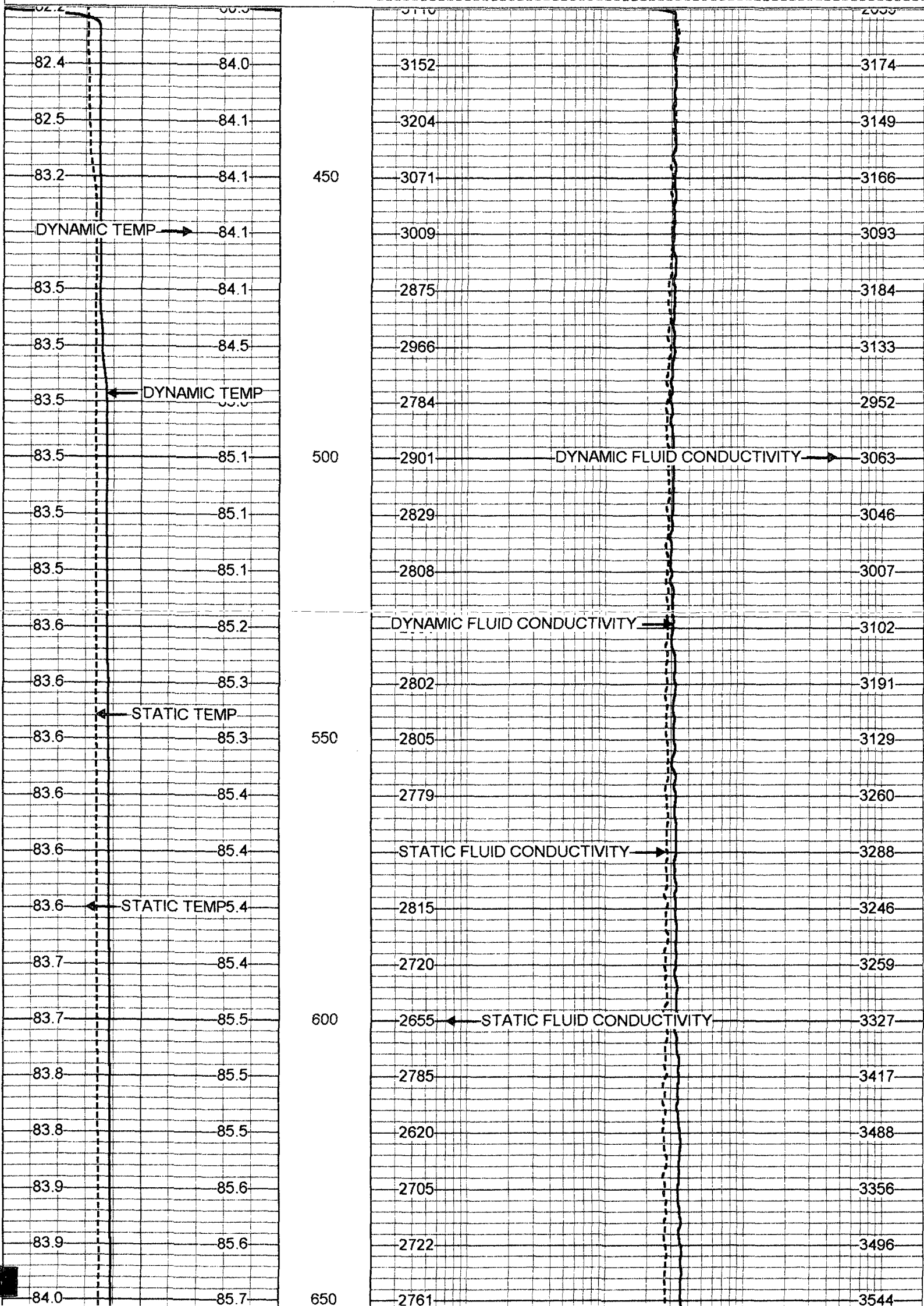
Database File: ftm diw.db
Dataset Pathname: run3/pass20
Presentation Format: frt_mg.prs

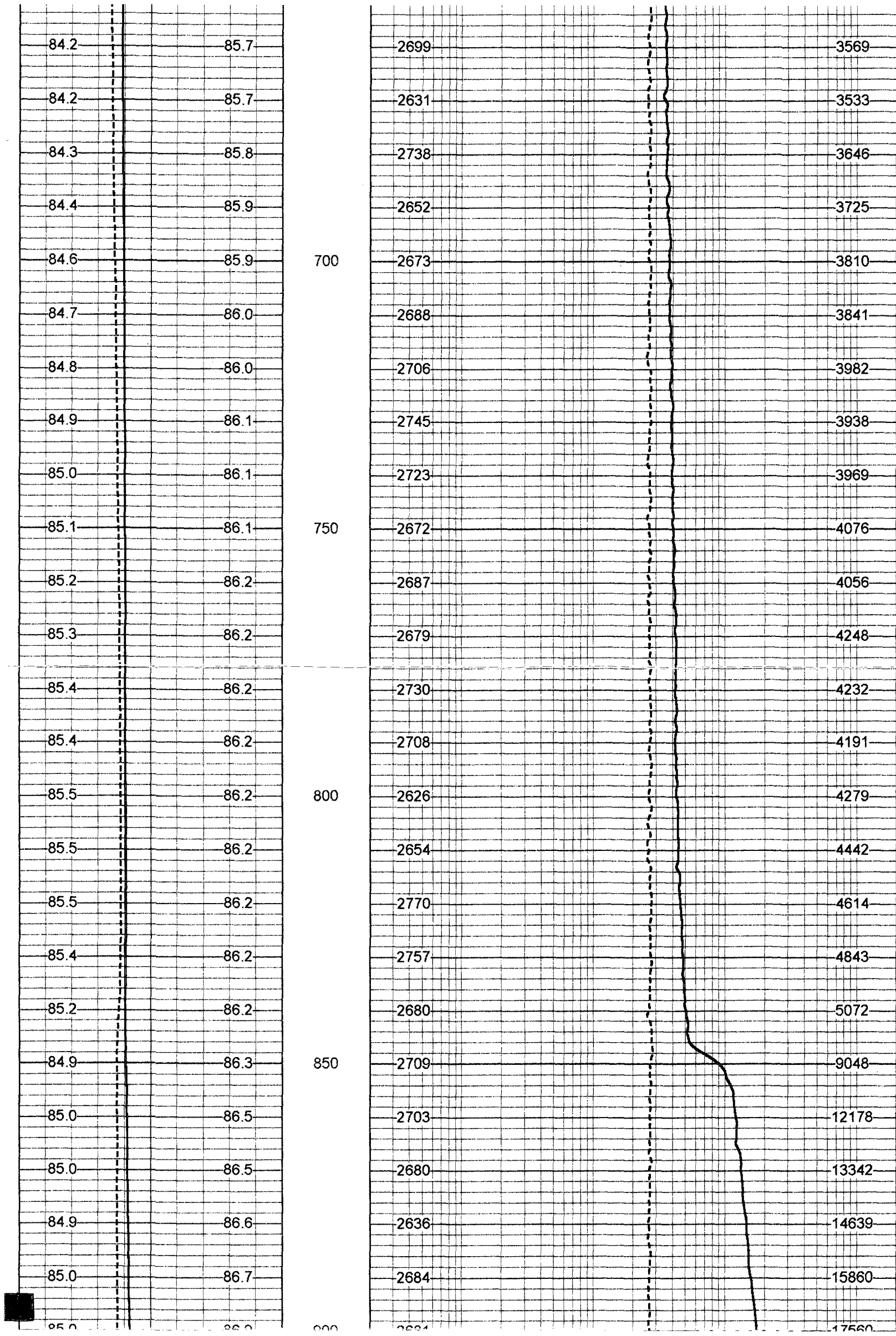
Charted by:

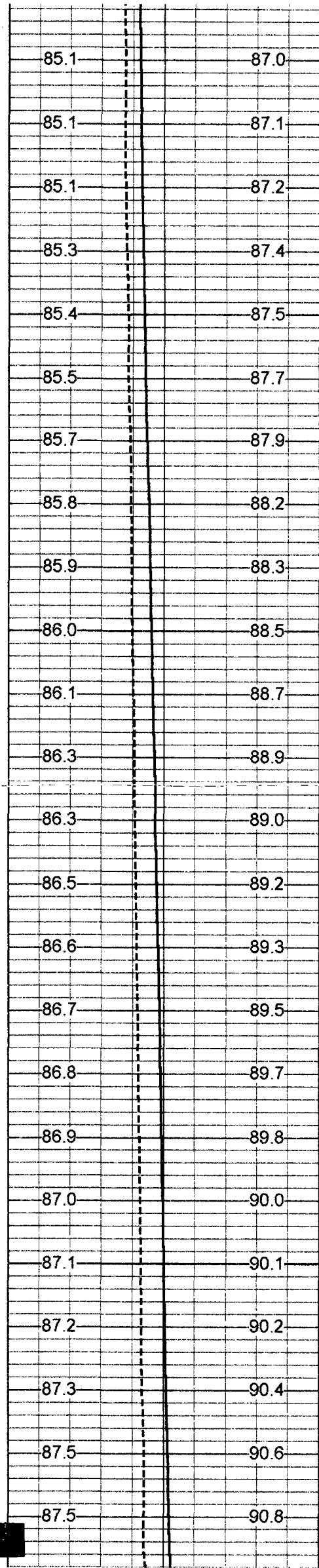
Depth in Feet scaled 1:240

70	DYNAMIC TEMP (degF)	110
70	STATIC TEMP (degF)	110

20	DYNAMIC FLUID CONDUCTIVITY (uS)	200000
20	STATIC FLUID CONDUCTIVITY (uS)	200000





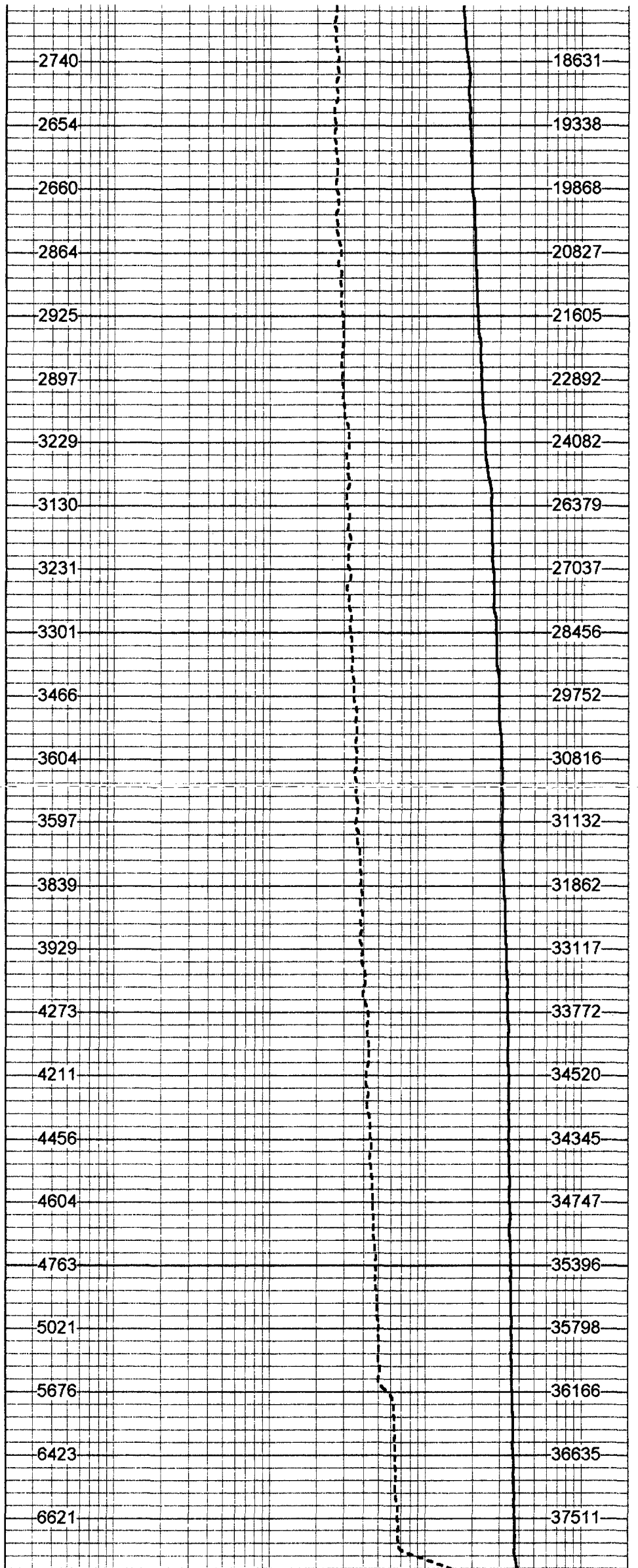


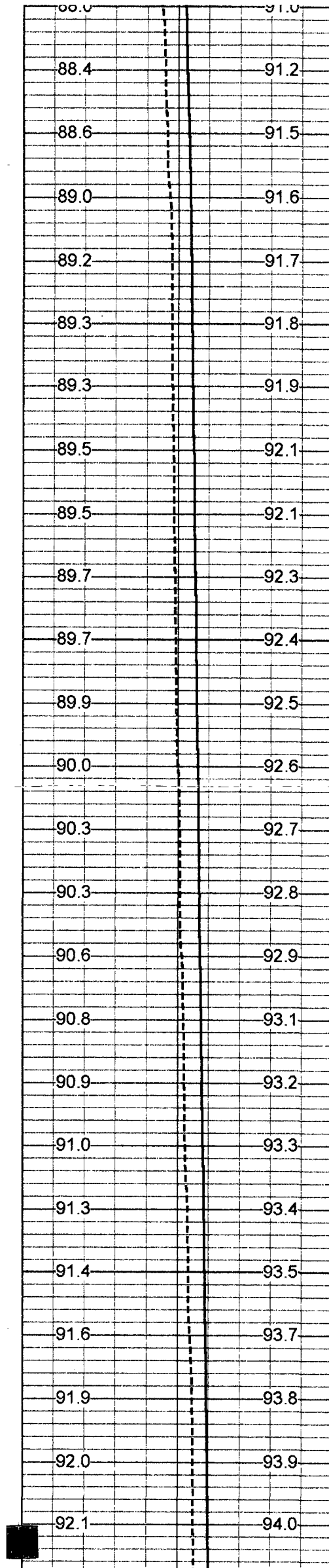
950

1000

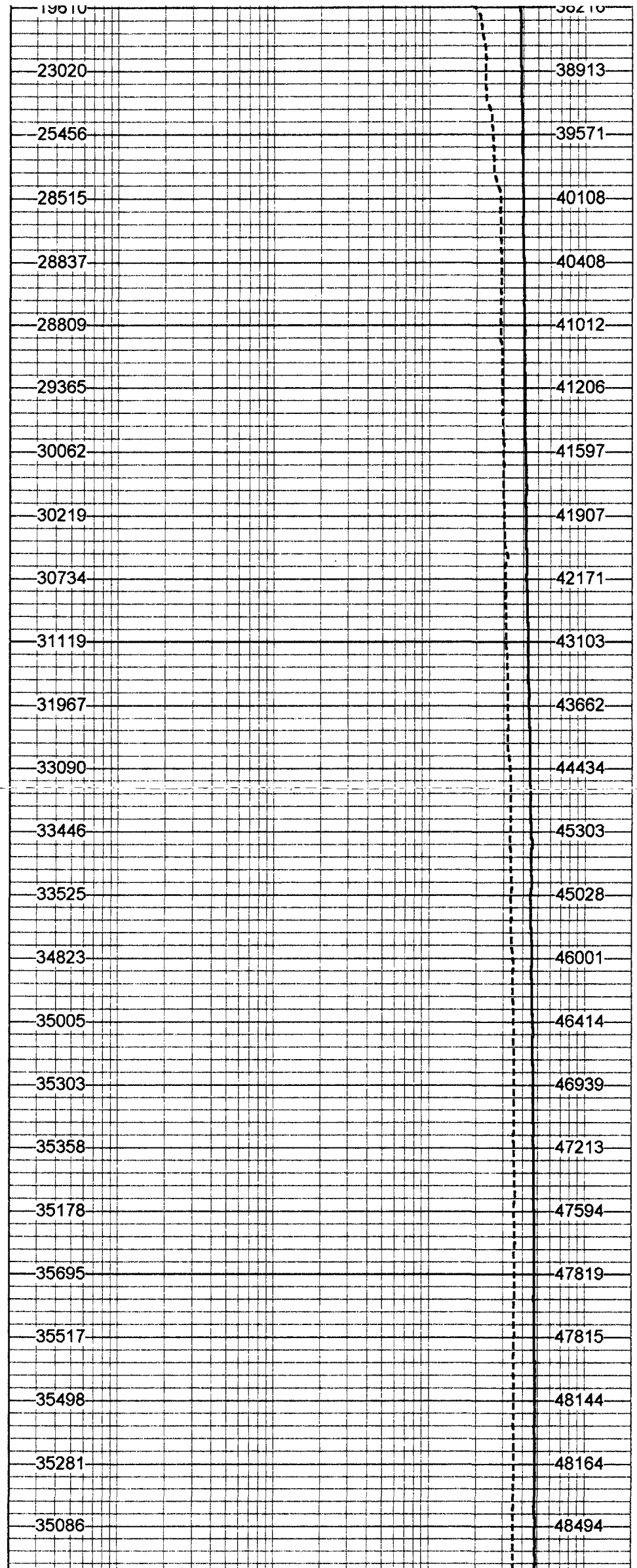
1050

1100





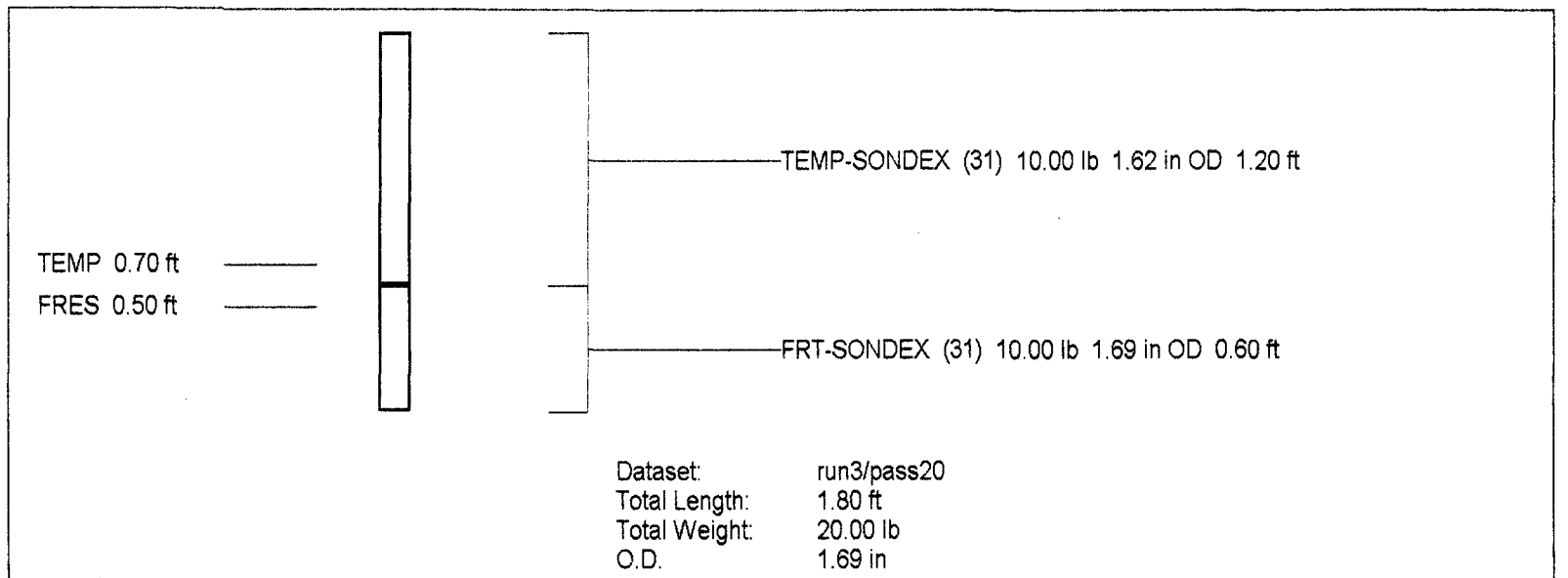
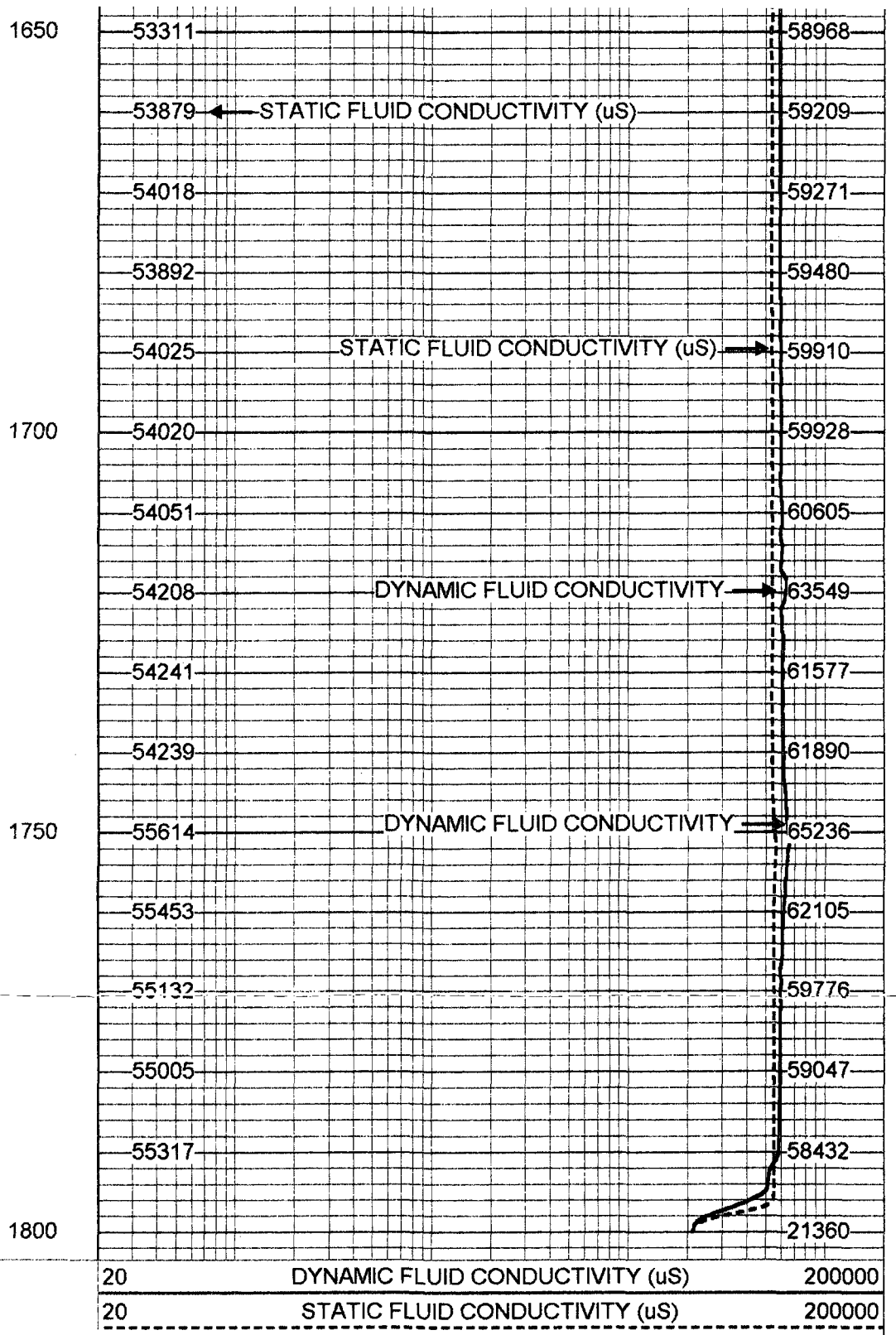
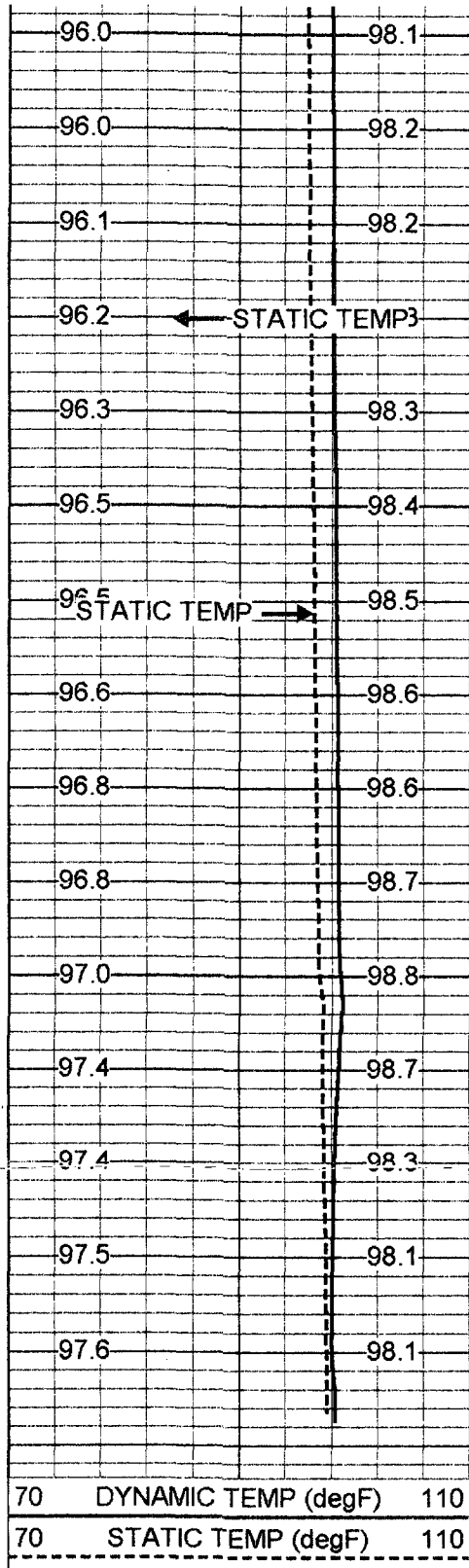
1150
1200
1250
1300
1350



92.2	94.1	1400	35099	48427
92.2	94.2		36114	49959
92.2	94.2		37780	50125
92.2	94.4		38903	50462
92.2	94.6		40728	50566
92.3	94.7	1450	43304	50808
92.4	95.0		43586	51246
92.5	95.3		43766	51505
92.6	95.5		45043	53537
92.7	95.6		45441	53690
92.7	95.8	1500	45678	53879
93.0	96.0		47891	54041
93.2	96.2		47906	55166
93.2	96.3		48335	55505
93.6	96.5		49703	55561
94.0	96.7	1550	50355	55429
94.1	96.9		50429	55685
94.4	97.1		51116	55676
94.8	97.3		51436	56150
94.9	97.4		51342	56675
95.3	97.6	1600	51605	57396
95.3	97.7		52074	57678
95.4	97.8		52283	58043
95.9	97.9		52024	58344
95.9	98.0		53463	58814

(DYNAMIC TEMP →

(DYNAMIC TEMP →



FRT Calibration Report

Serial Number: 31
Tool Model: SONDEX
Performed: Mon May 07 10:39:40 2001

Point #	Reading		Reference
1	33.812	cps	1000.000
2	186.494	cps	10000.000
3	963.690	cps	50000.000
4		cps	
5		cps	
6		cps	

Temperature Calibration Report

Serial Number: 31
Tool Model: SONDEX
Performed: Mon May 07 15:54:58 2001

Point #	Reading		Reference	
1	120.679	cps	34	degF
2	582.95	cps	135	degF
3		cps		degF