



**YOUNGQUIST BROTHERS, Inc**  
 GEOPHYSICAL LOGGING DIVISION

**FLUID CONDUCTIVITY TEMPERATURE LOG**

Company CITY OF FT. MYERS  
 Well IW-1  
 Field CH2M HILL  
 County LEE  
 State FLORIDA

Company CITY OF FT. MYERS  
 Well IW-1  
 Field CH2M HILL  
 County LEE  
 State FLORIDA

Location ROWTTP  
 Permanent Datum PAD  
 Log Measured From  
 Drilling Measured From  
 Elevation 20'  
 Other Services SEE REMARKS  
 Elevation K.B. 23.5', D.F. 20', G.L. 20'

Date	1/14/02
Run Number	FIVE
Depth Driller	3040'
Depth Logger	3042'
Bottom Logged Interval	3042'
Top Log Interval	CASING
Open Hole Size	12.25"
Type Fluid	WATER
Density / Viscosity	N/A
Max. Recorded Temp.	97 DEGF
Estimated Cement Top	N/A
Time Well Ready	ON ARRIVAL
Time Logger on Bottom	0900
Equipment Number	103
Location	FT. MYERS DENISON
Recorded By	R. DEAN
Witnessed By	

Run Number	Bit	Borehole Record		Wgt/ft	Tubing Record	
		From	To		From	To
ONE	12.25"	SURFACE	460'	375	SURFACE	450'
TWO	42.5"	SURFACE	462'	500	SURFACE	
THREE	34.5"	CASING	1660'			
FOUR	12.25"	CASING	3040'			
Casing Record		Size			Top	Bottom
Surface String		36"			SURFACE	450'
Prod. String		28"			SURFACE	1650'
Production String						
Liner						

<<< Fold Here >>>

All interpretations are opinions based on inferences from electrical or other measurements and we cannot and do not guarantee the accuracy or correctness of any interpretation, and we shall not, except in the case of gross or willful negligence on our part, be liable or responsible for any loss, costs, damages, or expenses incurred or sustained by anyone resulting from any interpretation made by any of our officers, agents or employees. These interpretations are also subject to our general terms and conditions set out in our current Price Schedule.

**Comments**

DYNAMIC FLOWRATE = APPROX. 600 GPM

OTHER SERVICES:  
 X-Y CALIPER/GAMMA RAY  
 FLOWMETER  
 DUAL INDUCTION/LL3/SP  
 BOREHOLE COMPENSATED SONIC  
 VIDEO



**MERGED FCT\TEMP**

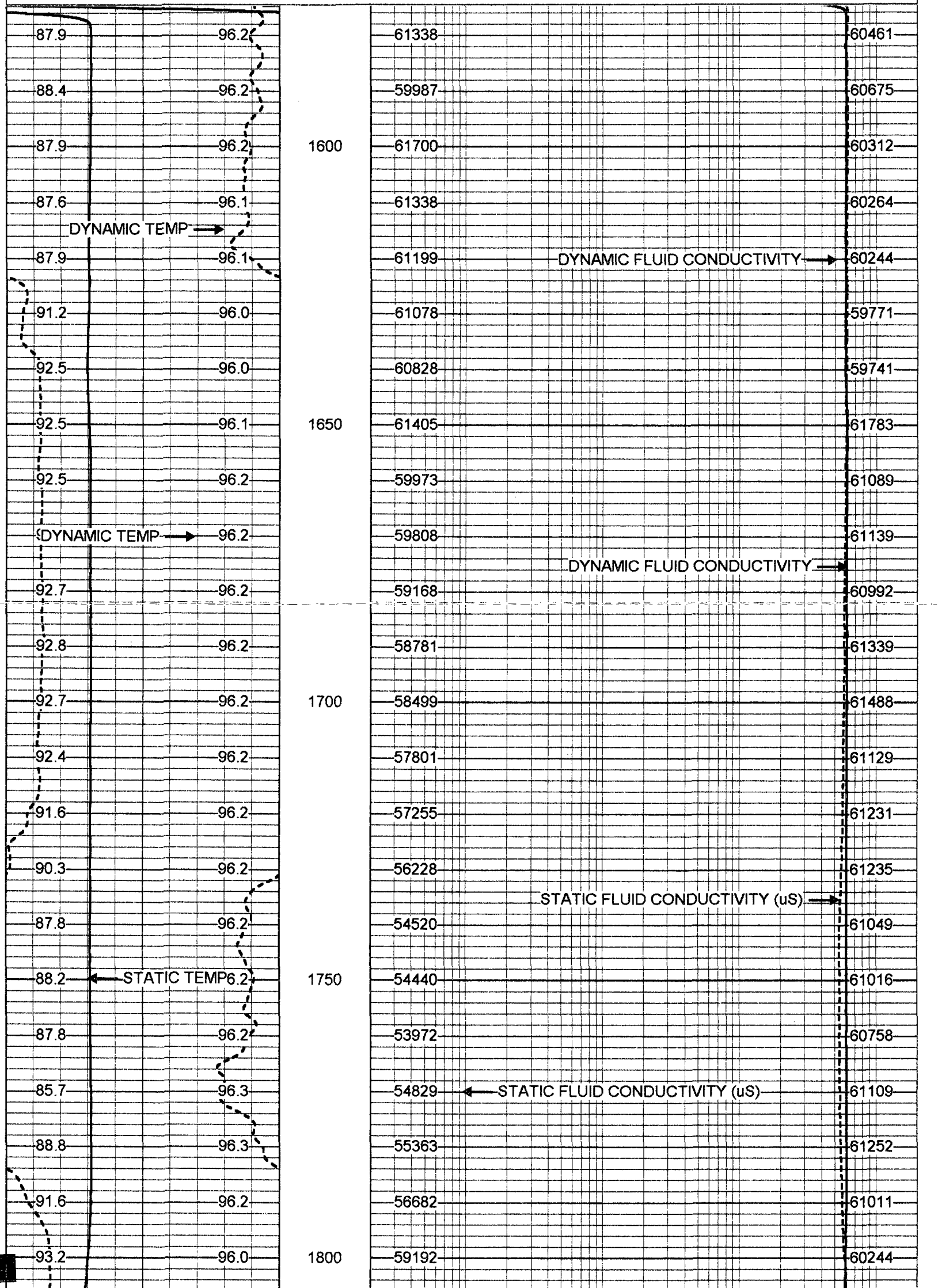
Database File: ftmdiw.db  
 Dataset Pathname: run5/pass19  
 Presentation Format: frt\_mg.prs

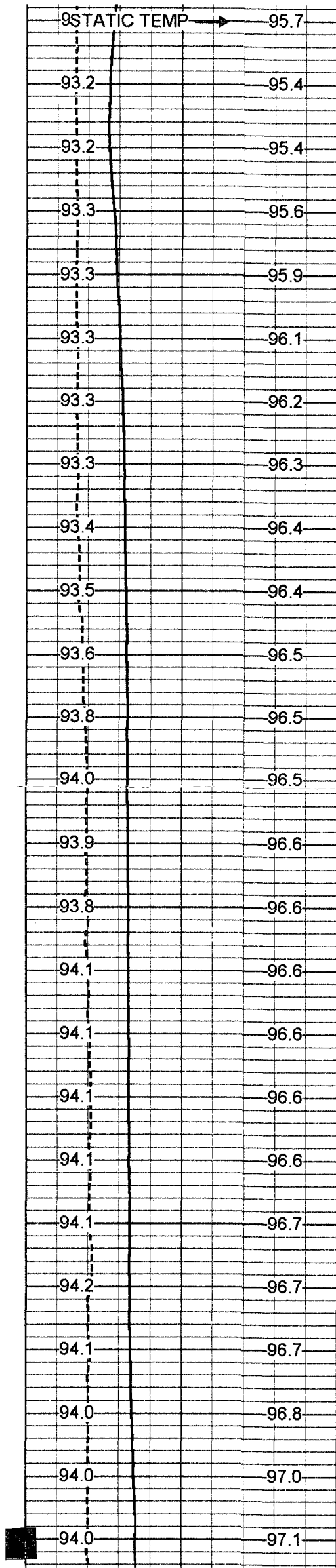
Charted by:

Depth in Feet scaled 1:240

70 DYNAMIC TEMP (degF) 90  
 70 STATIC TEMP (degF) 90

20 DYNAMIC FLUID CONDUCTIVITY (uS) 200000  
 20 STATIC FLUID CONDUCTIVITY (uS) 200000





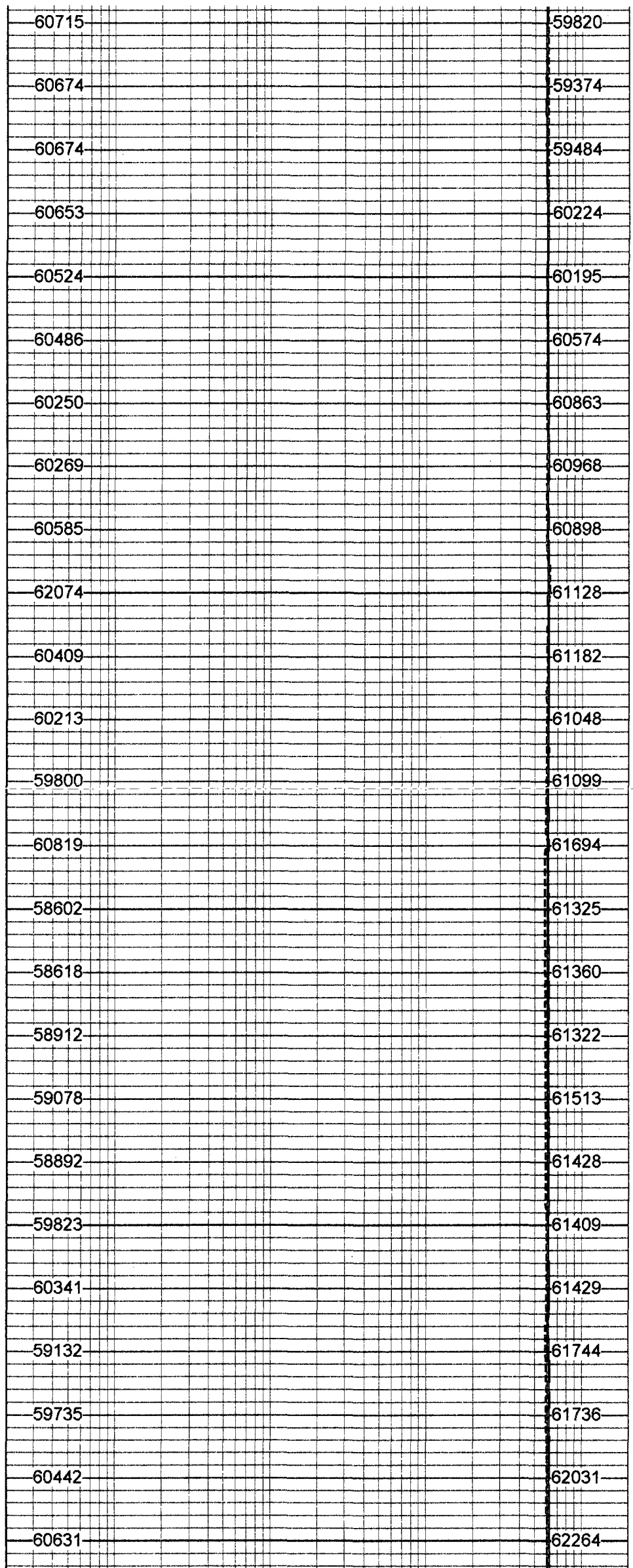
1850

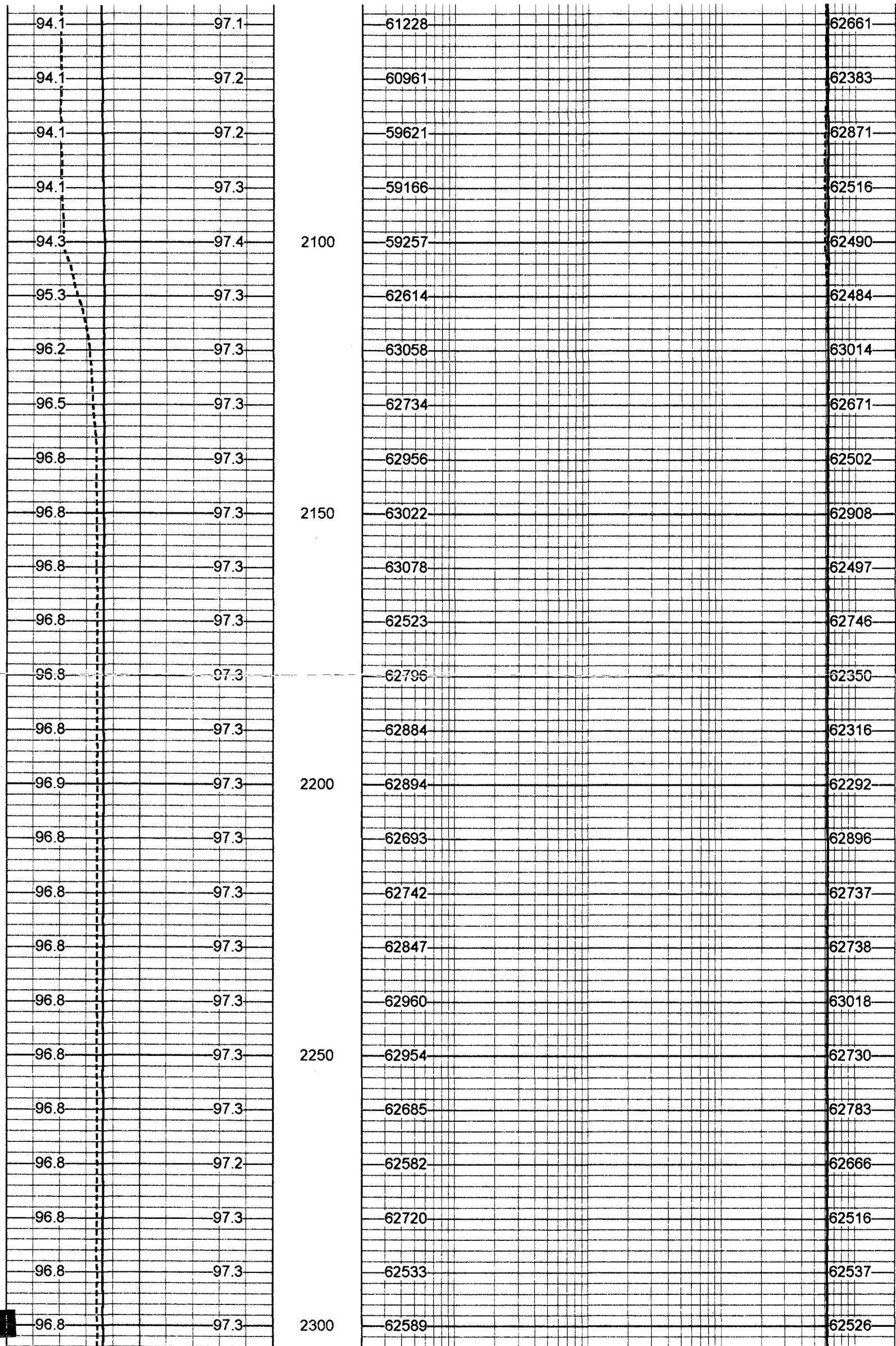
1900

1950

2000

2050





96.8	97.3		62495	62267
96.8	97.3		62598	62793
96.9	97.3		61936	62612
96.9	97.3		62204	62431
96.8	97.2	2350	62108	62363
96.8	97.3		62375	62696
96.8	97.2		62263	62722
96.8	97.2		62182	62784
96.9	97.2		62089	62568
96.8	97.2	2400	62348	62476
96.8	97.2		62028	62394
96.8	97.2		61934	62310
96.9	97.2		62405	62794
96.9	97.2		62156	62565
96.9	97.2	2450	62338	62389
96.8	97.2		62429	62754
96.8	97.2		62118	62509
96.8	97.2		62219	62841
96.9	97.2		62047	62433
96.8	97.2	2500	62027	62160
96.9	97.2		61973	62578
96.9	97.1		62127	62180
96.9	97.1		62139	62354
96.9	97.2		62007	62407
96.9	97.1	2550	62050	62414

96.9 97.1

61904

62361

96.9 97.1

61989

62287

96.9 97.2

61886

62226

96.9 97.2

61777

62303

96.9 97.1

2600

61861

62182

96.8 97.1

61976

62691

96.8 97.1

61266

62561

96.8 97.1

61157

62397

96.8 97.2

61637

62356

96.8 97.2

2650

61059

62313

96.8 97.2

61392

62621

96.8 97.2

61254

61714

96.8 97.2

61265

62345

96.9 97.1

61492

62802

96.8 97.2

2700

61462

62602

96.8 97.1

61369

62472

96.9 97.2

61780

62516

96.9 97.2

62173

62701

96.9 97.2

61643

62474

96.9 97.2

2750

62063

62644

96.9 97.2

61632

62353

96.9 97.2

61951

62397

96.9 97.2

62302

62516

96.9 97.2

62106

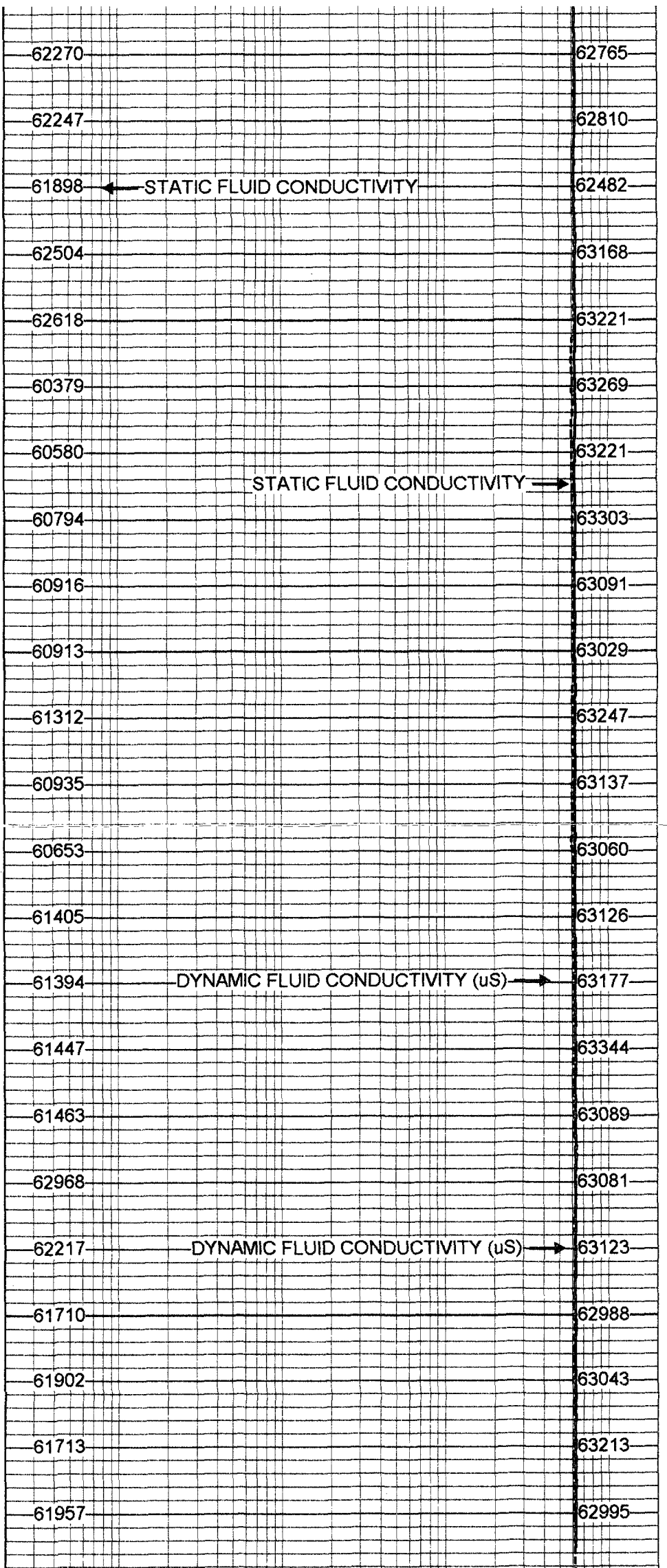
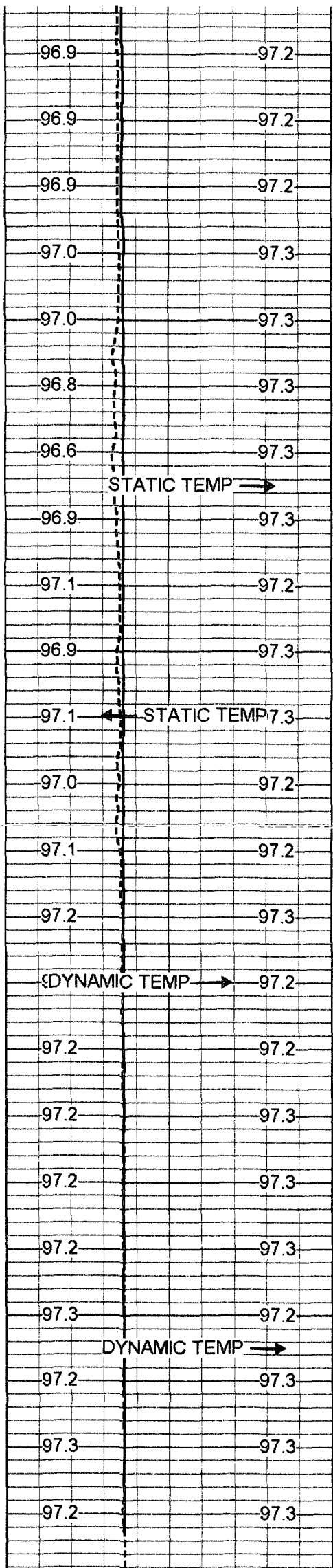
62673

96.9 97.2

2800

62358

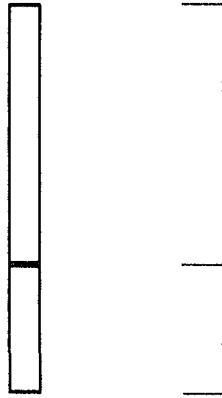
62630



70 DYNAMIC TEMP (degF) 90  
 0 STATIC TEMP (degF) 90

20 DYNAMIC FLUID CONDUCTIVITY (uS) 20000  
 20 STATIC FLUID CONDUCTIVITY (uS) 20000

TEMP 0.70 ft  
 FRES 0.50 ft



TEMP-SONDEX (30) 10.00 lb 1.62 in OD 1.20 ft

FRT-SONDEX (30) 10.00 lb 1.69 in OD 0.60 ft

Dataset: run5/pass19  
 Total Length: 1.80 ft  
 Total Weight: 20.00 lb  
 O.D. 1.69 in

### FRT Calibration Report

Serial Number: 30  
 Tool Model: SONDEX  
 Performed: Mon May 07 16:59:04 2001

Point #	Reading		Reference
1	38.604	cps	1000.000
2	332.194	cps	10000.000
3	1502.090	cps	50000.000
4		cps	
5		cps	
6		cps	

### Temperature Calibration Report

Serial Number: 30  
 Tool Model: SONDEX  
 Performed: Mon May 07 15:43:28 2001

Point #	Reading		Reference	
1	113.926	cps	33	degF
2	659.964	cps	140	degF
3		cps		degF