



HIGH RESOLUTION
TEMPERATURE
LOG

Company Diversified Drilling Corp.
Well BSU IW-1
Field Bonita Springs
County Lee
State/Prv Florida

Company Diversified Drilling Corporation
Well BSU IW-1
Field Bonita Springs
County Lee
State/Prv Florida

Location Bonita Springs Utilities RO WTP
Bonita Springs Utilities, Inc.
McNabb Hydrogeologic Consulting, Inc.

Permanant Datum Pad Elevation
Log Measured From Pad
Drilling Measured From Pad
RTS
HPT
DHTV
Elevation

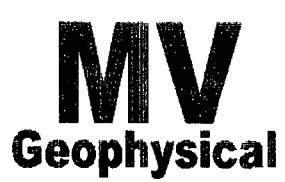
Date	8-FEB-2008
Run Number	WT-08
Depth Driller	3296
Depth Logger	2914
Bottom Logged Interval	2914
Top Log Interval	SURFACE
Open Hole Size	6"
Type Fluid	F20
Capacity / Viscosity	NA/NA
Water Recorded Temp	see HR LOG
Estimated Cement Top	NA
Time Well Ready	08:00 08/20/08
Time Logger on Bottom	08:00 08/20/08
Equipment Number	AVSS-1
Location	FL Myers
Recorded By	S. Millard Miller
Witnessed By	S. Durall (HHC)
Sortino Record	Sortino Record
Part Number	811
ONE	9' 2704' TO 3208'
Size	20"
Surface String	14.5" FRP TBG
Prot String	14.5" ID
Production String	
Line#	
Invoice No.	20080330
P.O. #	
Job No.	6x-pdf-las
	bsuiw108
	FINAL PRINT

All interpretations are opinions based on inferences from electrical or other measurements and we cannot and do not guarantee the accuracy or correctness of any interpretation, and we shall not, except in the case of gross or willful negligence on our part, be liable or responsible for any loss, costs, damages, or expenses incurred or sustained by anyone resulting from any interpretation made by any of our officers, agents or employees. These interpretations are also subject to our general terms and conditions set out in our current Price Schedule.

Comments

TEMPERATURE CALIBRATION REPORT
(Performed: 7-FEB-08 17:15)

DEG-F	CPS
38.5	147.851
148.8	2690.21

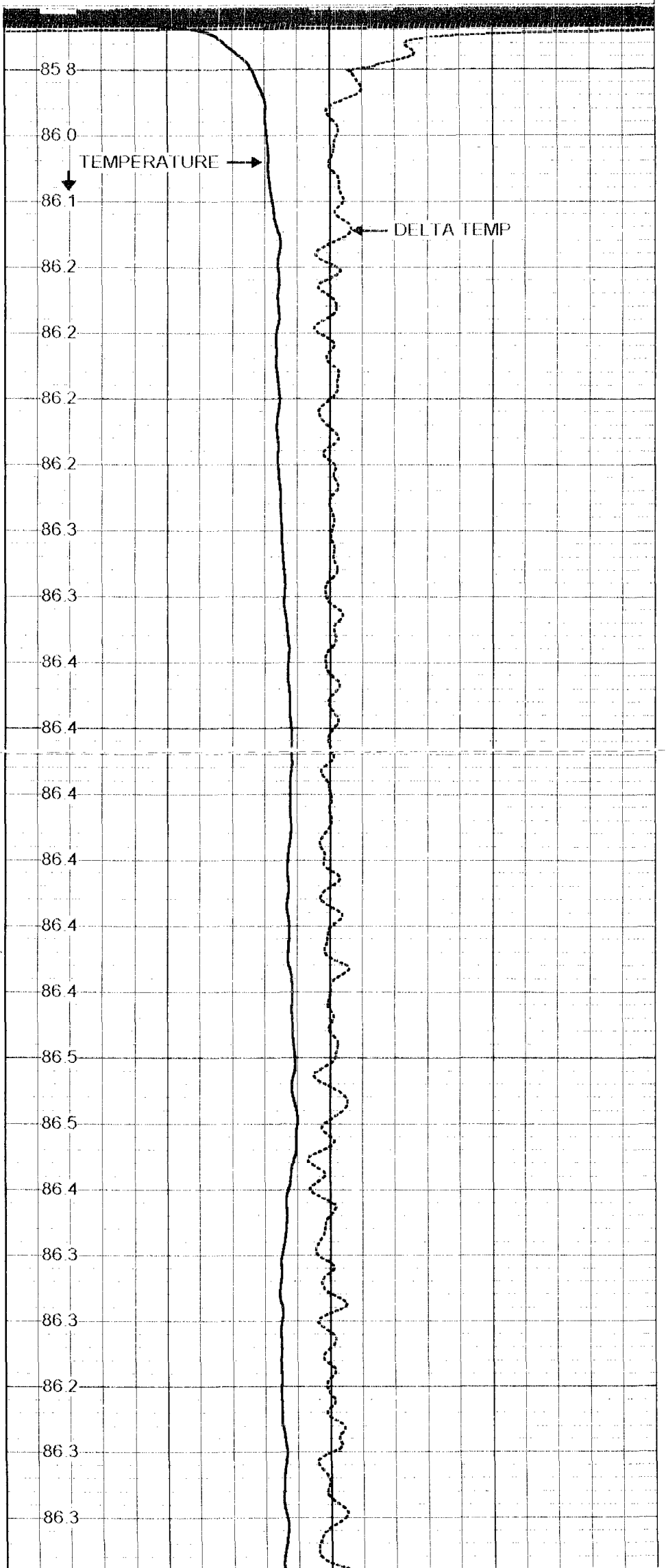
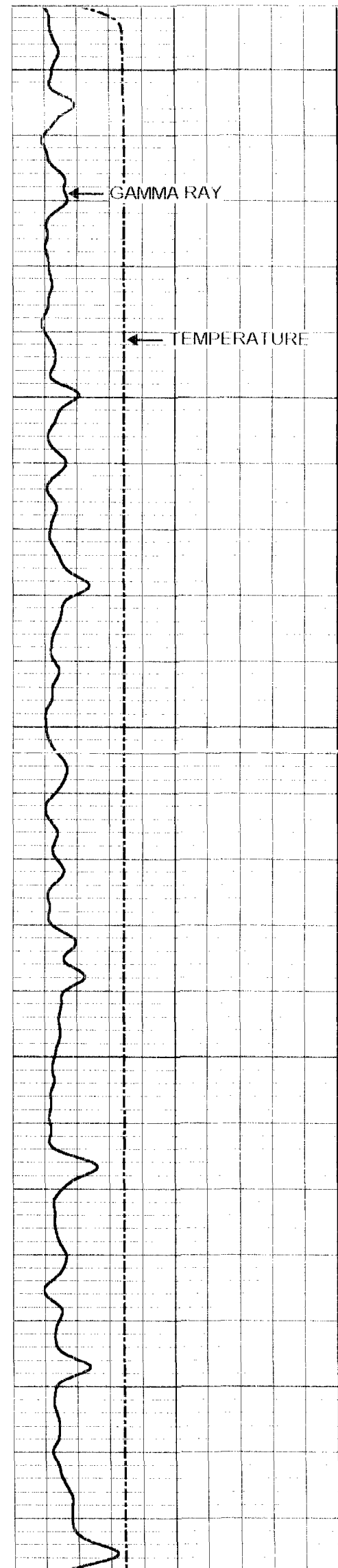


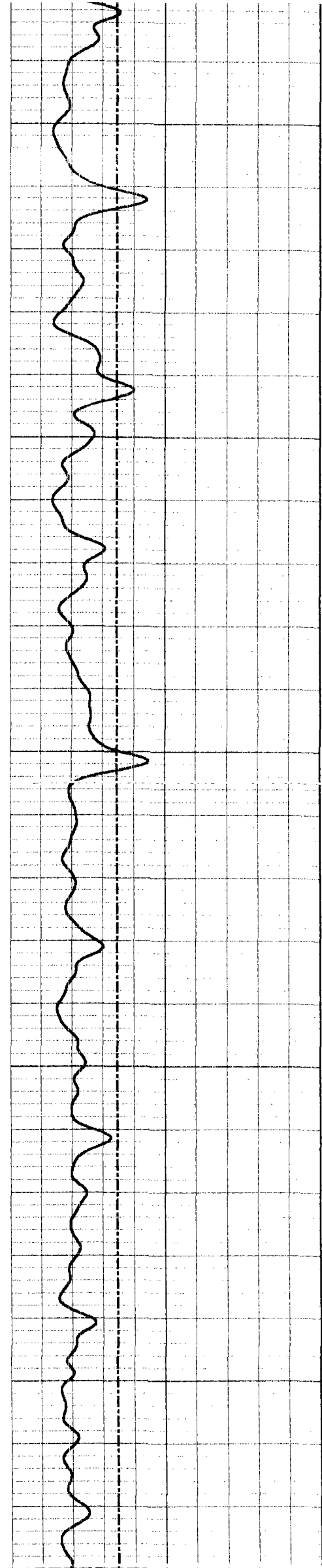
Temperature Down

Database File: bsuiw108.db
Dataset Pathname: pass1.1
Presentation Format: rtsbsu-1.prs
Dataset Creation: Fri Feb 08 10:41:39 2008 by Calc VER_5.3
Charted by: Depth in Feet scaled 1.240

0	TEMP (degF)	250
0	GAMMA RAY (GAPI)	100

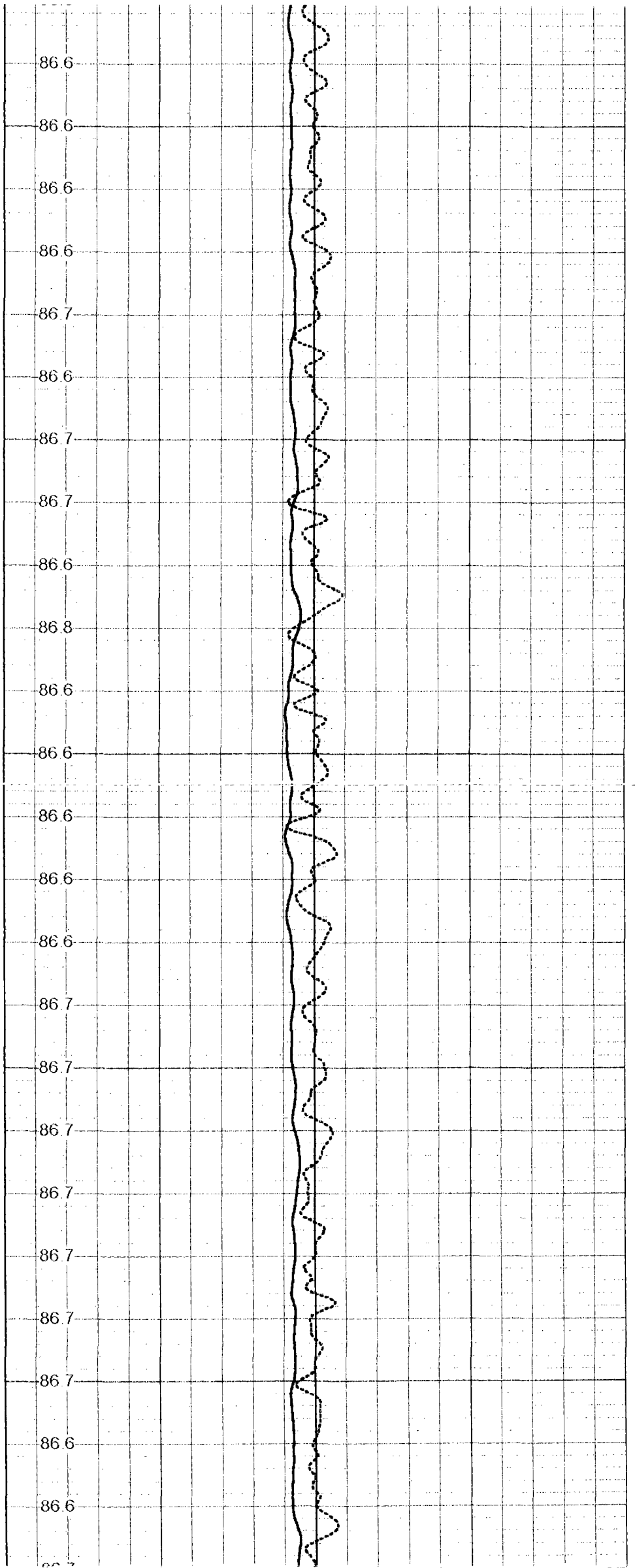
82	TEMPERATURE (degF)	92
-0.5	DELTA TEMP (degF)	0.5

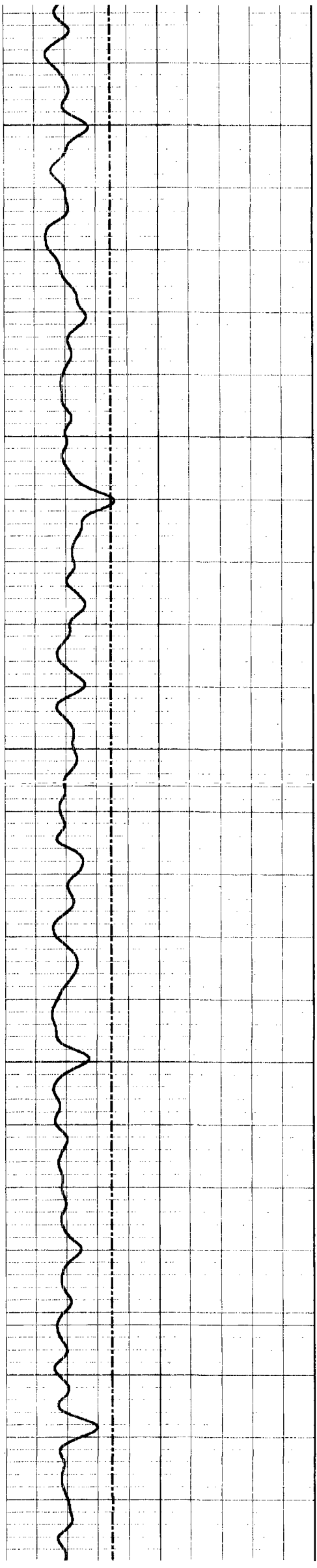




300

900

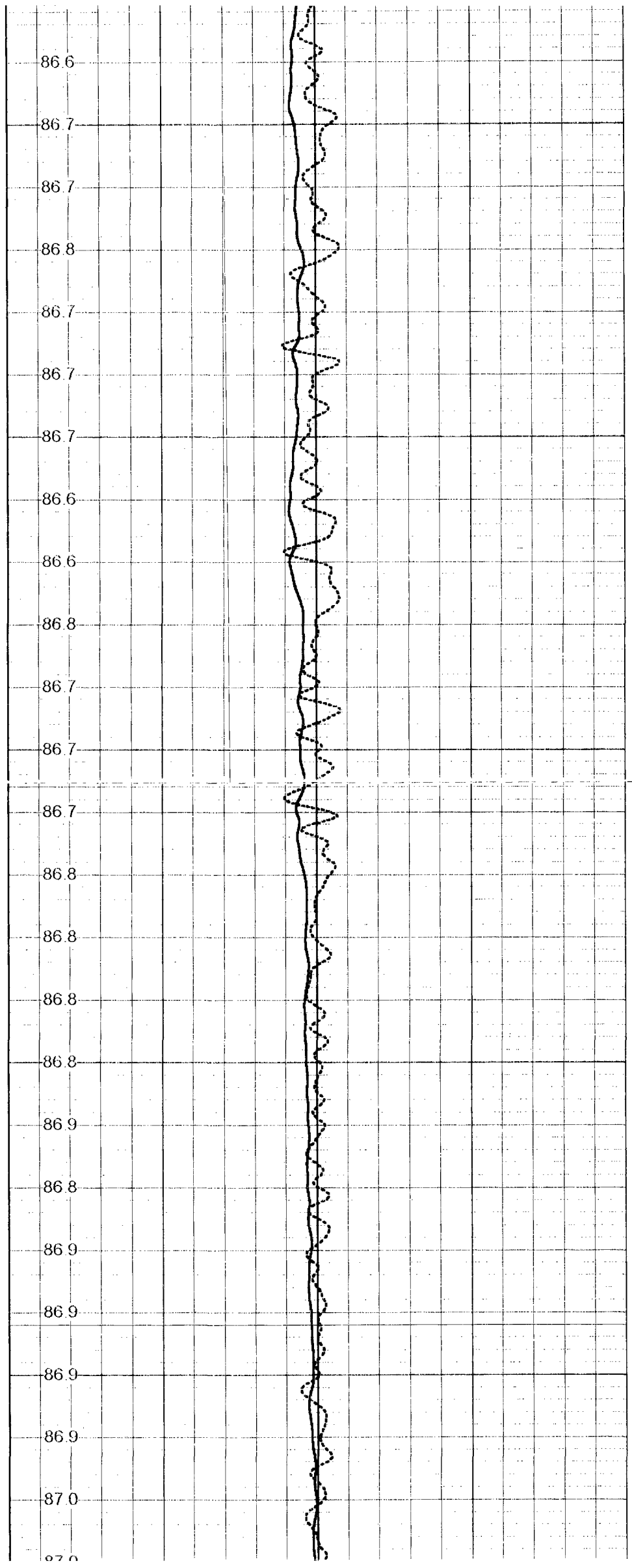


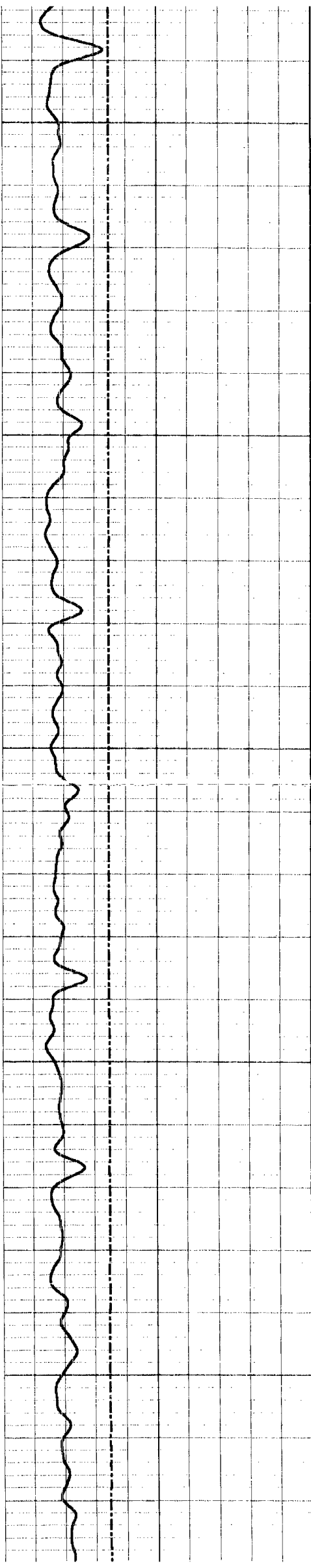


1000

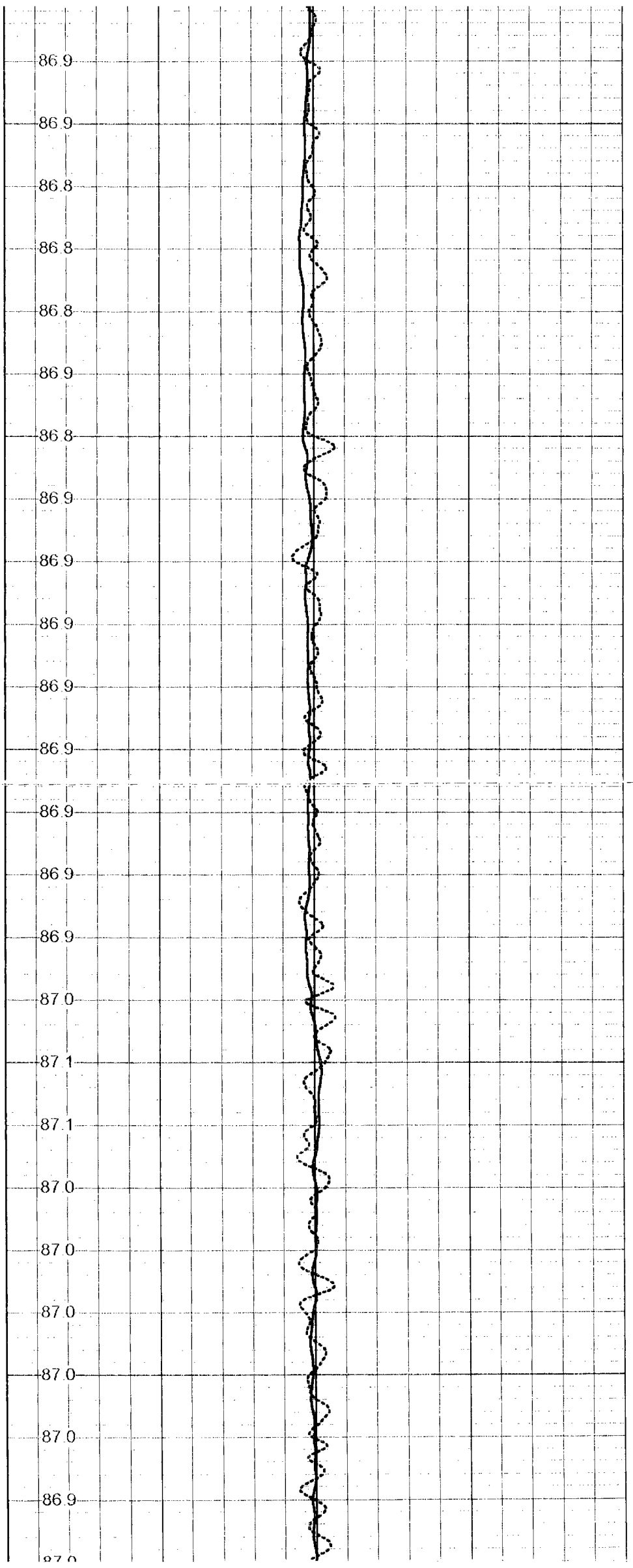
1100

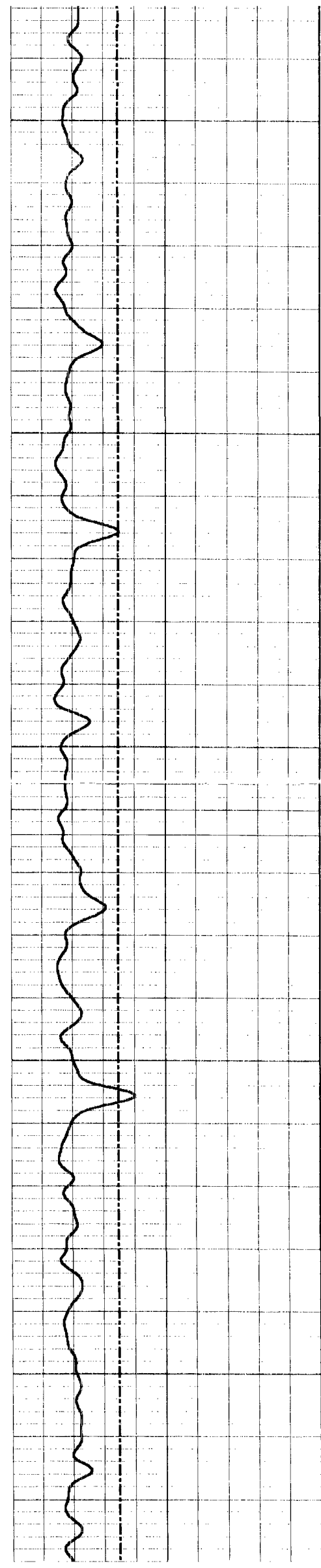
1200





1300

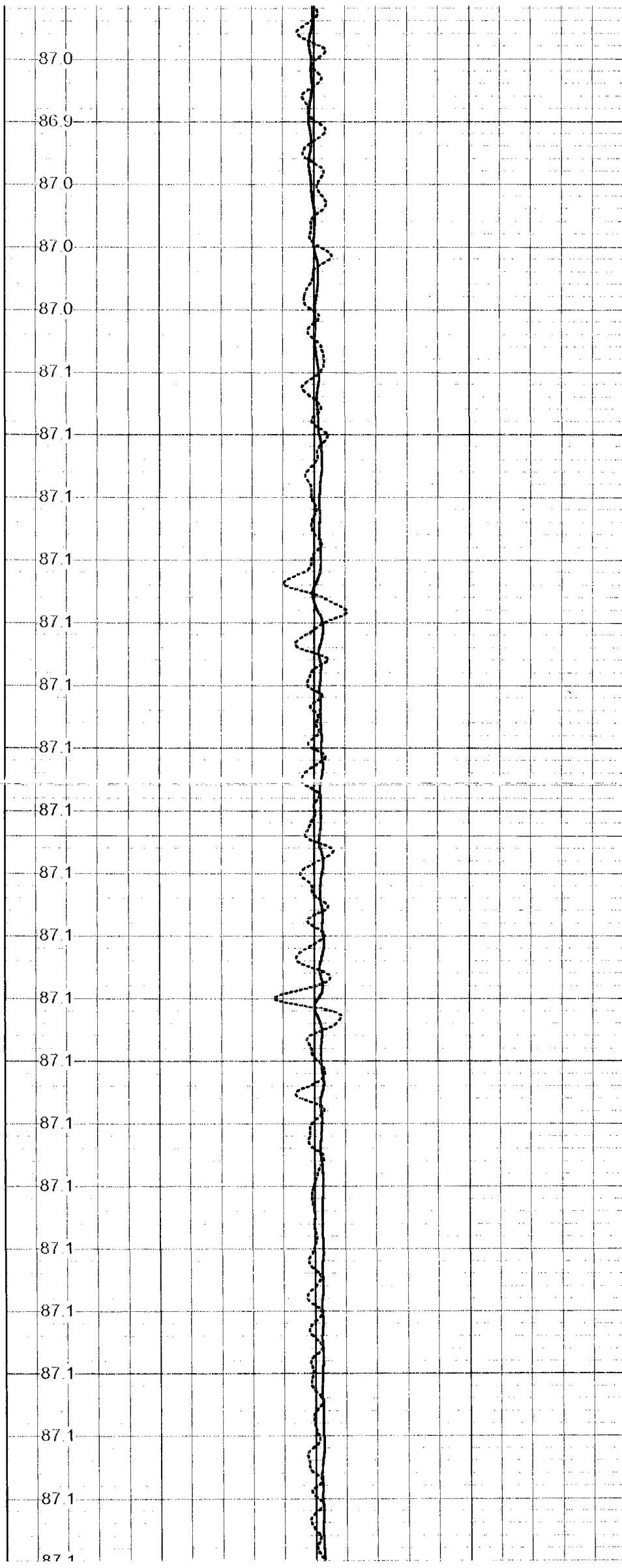




1500

1600

1700



87.0

86.9

87.0

87.0

87.0

87.1

87.1

87.1

87.1

87.1

87.1

87.1

87.1

87.1

87.1

87.1

87.1

87.1

87.1

87.1

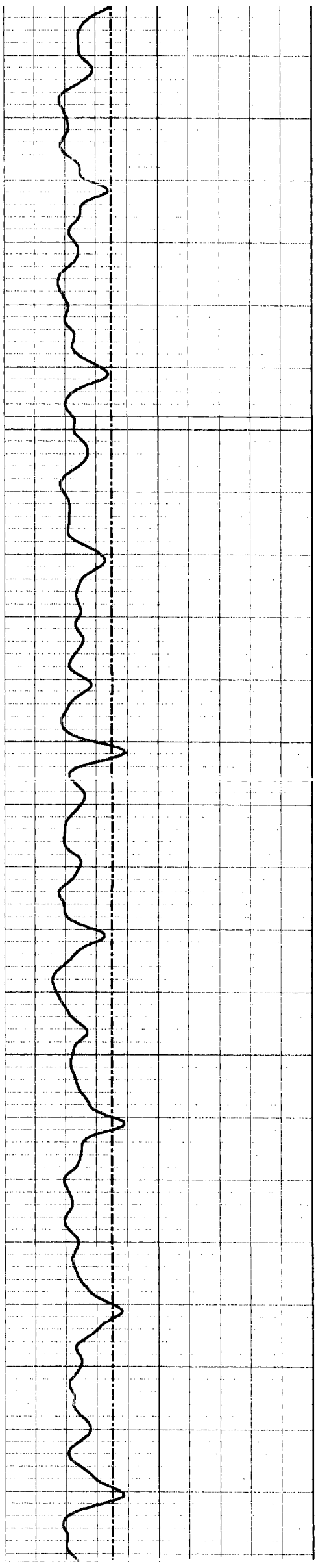
87.1

87.1

87.1

87.1

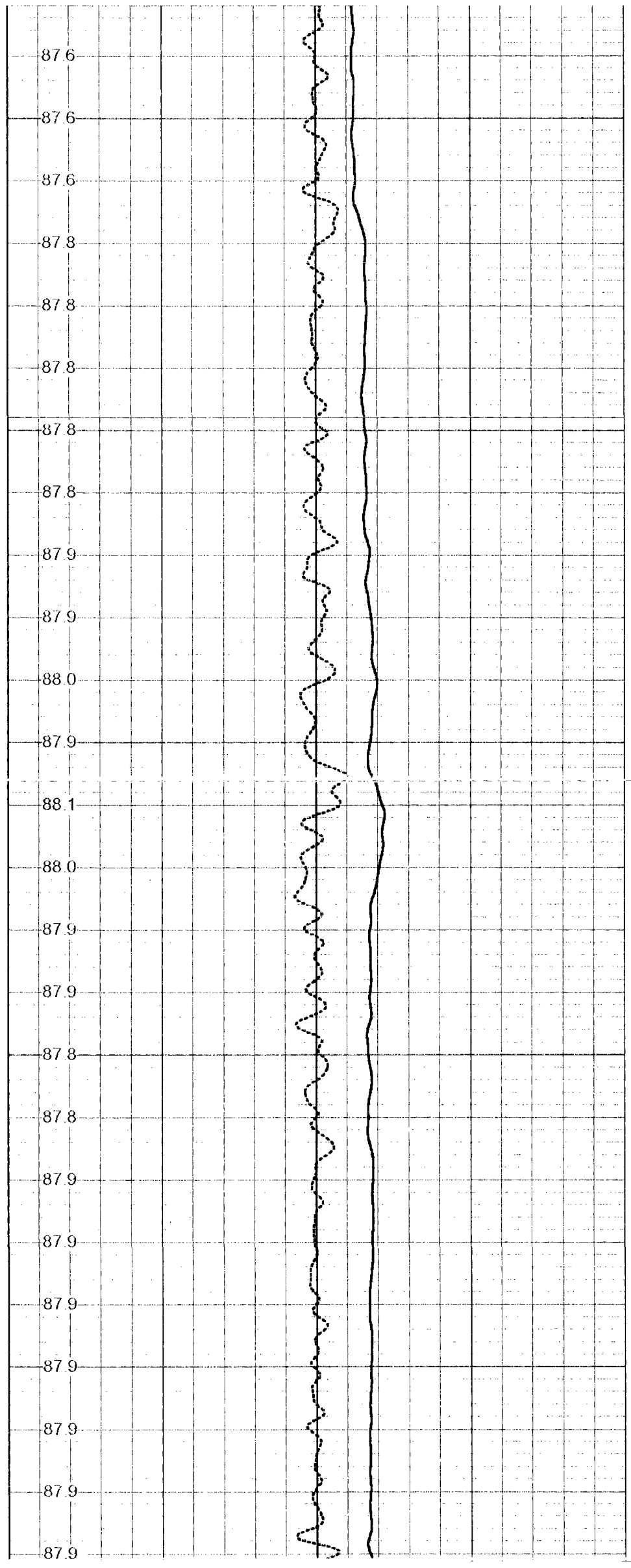
87.1

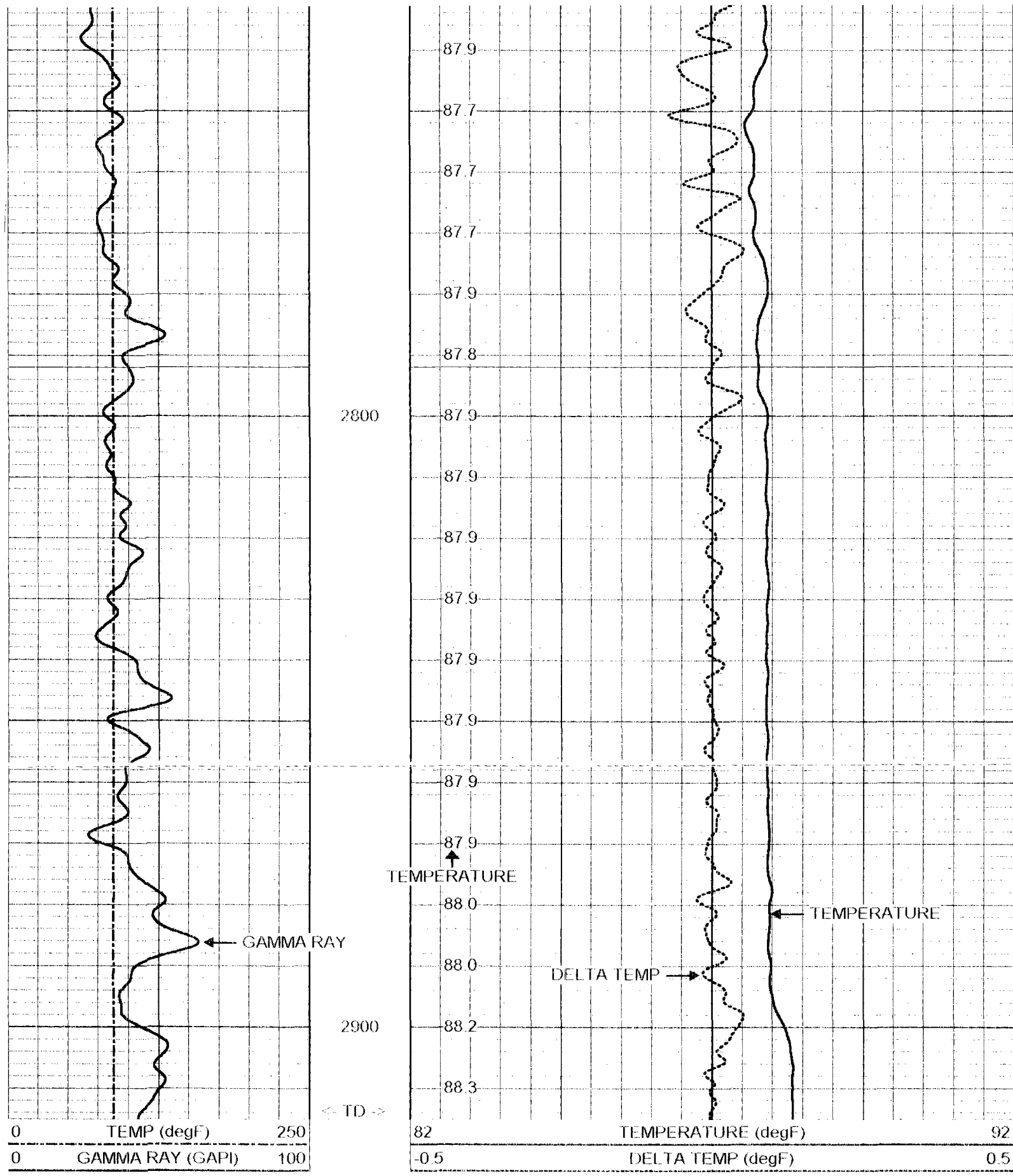


2000

2100

2200





Gamma Ray Calibration Report

Serial Number: MV02B
 Tool Model: RTSB
 Performed: Fri Feb 08 09:41:17 2008

Calibrator Value: 120 GAPI

Background Reading: 17.161 cps
 Calibrator Reading: 205.72 cps

Sensitivity: 0.636406 GAPI/cps

Serial Number: MV01M
Tool Model: RTSM
Performed: Fri Feb 08 09:41:24 2008

Calibrator Value: 120 GAPI

Background Reading: 16.346 cps
Calibrator Reading: 211.241 cps

Sensitivity: 0.615716 GAPI/cps

Gamma Ray Calibration Report

Serial Number: MV01T
Tool Model: RTST
Performed: Fri Feb 08 09:49:22 2008

Calibrator Value: 120 GAPI

Background Reading: 33.2611 cps
Calibrator Reading: 123.283 cps

Sensitivity: 1.33301 GAPI/cps

GR 23.78 ft

GR #3 -RTST (MV01T) 45.00 lb 1.90 in OD 9.67 ft

TREJCT-A (MV01) 10.00 lb 1.90 in OD 3.83 ft

GR#2 10.37 ft

GR-RTSM (MV01M) 90.00 lb 1.90 in OD 5.83 ft

CCL 4.46 ft

GR#3 1.15 ft

TEMP 0.10 ft



CCL-MVGS 1.9 (MV02) 8.00 lb 1.90 in OD 1.33 ft

GR #2 -RTSB (MV02B) 10.00 lb 1.90 in OD 3.33 ft

TEMP-RTS (MV02) 2.00 lb 1.90 in OD 0.46 ft

Dataset run1/pass2
Total Length: 24.45 ft
Total Weight: 165.00 lb
O.D. 1.90 in