

Company **WATER RESOURCE SLTS.**
 Well **IW #2**
 Field **NCWRF**
 County **COLLIER**
 State **FL**

Company **WATER RESOURCE SOLUTIONS, INC.**
 Well **IW #2**
 Field **NCWRF**
 County **COLLIER**
 State **FLORIDA**

Location **SE 1/4 S27 T48S R25E**

Permanent Datum **PAD**
 Log Measured From **GROUND LEVEL**
 Drilling Measured From

Elevation **15'**

Other Services **SEE COMMENTS**

Date **SEPT. 14, 2003**

Run Number **THREE**

Depth Driller **1690'**

Depth Logger **1677'**

Bottom Logged Interval **1677'**

Top Log Interval **452'**

Open Hole Size **12.25"**

Type Fluid **WATER**

Density / Viscosity **N/A**

Max. Recorded Temp. **N/A**

Estimated Cement Top **ON ARRIVAL**

Time Well Ready **0300**

Time Logger on Bottom **103**

Equipment Number **FT. MYERS FERGUSON**

Location **D. ACQUAVIVA**

Recorded By

Witnessed By

Borehole Record		Tubing Record				
Run Number	Bit From	To	Size	Weight	From	To
ONE	58.5"	SURFACE	413'			
TWO	12.25"	413'				

Casing Record		Top		Bottom	
Size	Wgt/Ft	Top	From	Bottom	To
60"	375 W.T.	SURFACE		8'	
48"	375 W.T.	SURFACE		407'	

<<< Fold Here >>>

All interpretations are opinions based on inferences from electrical or other measurements and we cannot and do not guarantee the accuracy or correctness of any interpretation, and we shall not, except in the case of gross or willful negligence on our part, be liable or responsible for any loss, costs, damages, or expenses incurred or sustained by anyone resulting from any interpretation made by any of our officers, agents or employees. These interpretations are also subject to our general terms and conditions set out in our current Price Schedule.

Comments

DRILL PIPE WAS SET TO 452' TO AID IN GETTING DOWN

OTHER SERVICES;

X-Y CALIPER / GAMMA-RAY
 DUAL INDUCTION
 BOREHOLE COMPENSATED SONIC

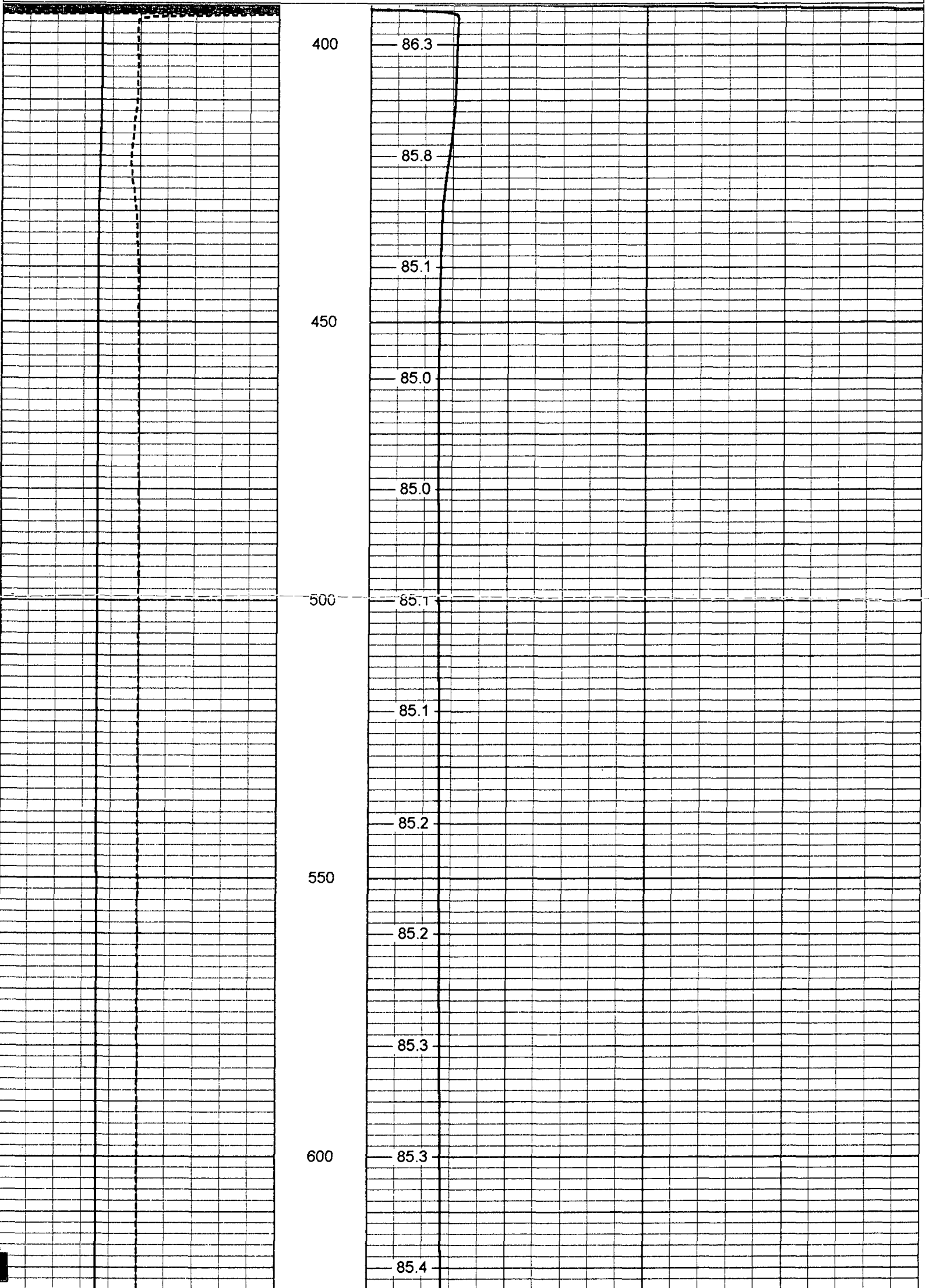
TEMP - MAIN PASS

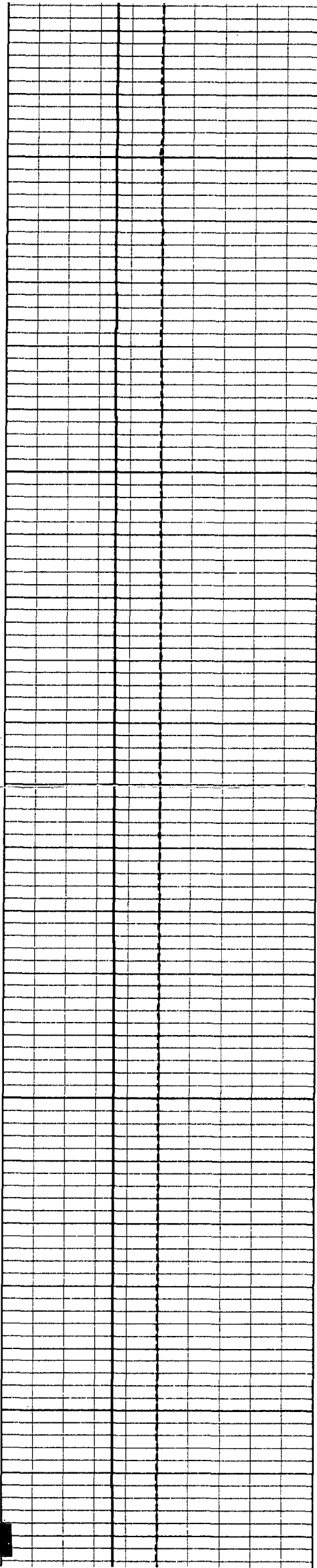
-1 DELTA TEMPERATURE (degF) 1
50 TEMPERATURE (degF) 150

80

TEMPERATURE (degF)

120





650

85.4

85.4

85.4

700

85.4

85.4

85.5

750

85.6

85.6

800

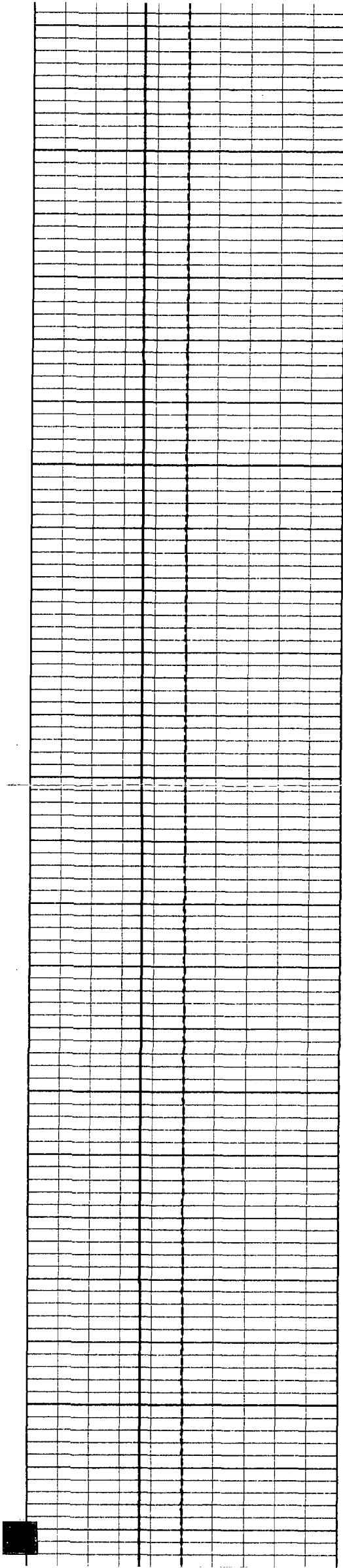
85.6

85.7

85.7

850

85.8



900

950

1000

1050

1100

85.8

85.9

86.0

86.0

86.1

86.1

86.2

86.2

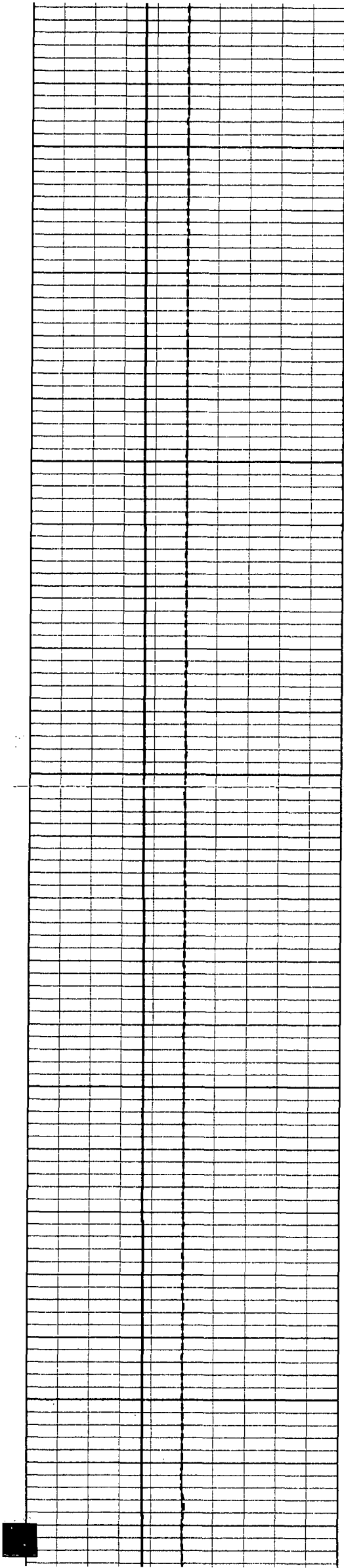
86.3

86.3

86.4

86.4

86.5



1150

86.5

86.6

86.7

1200

86.7

86.8

86.9

1250

86.9

87.0

1300

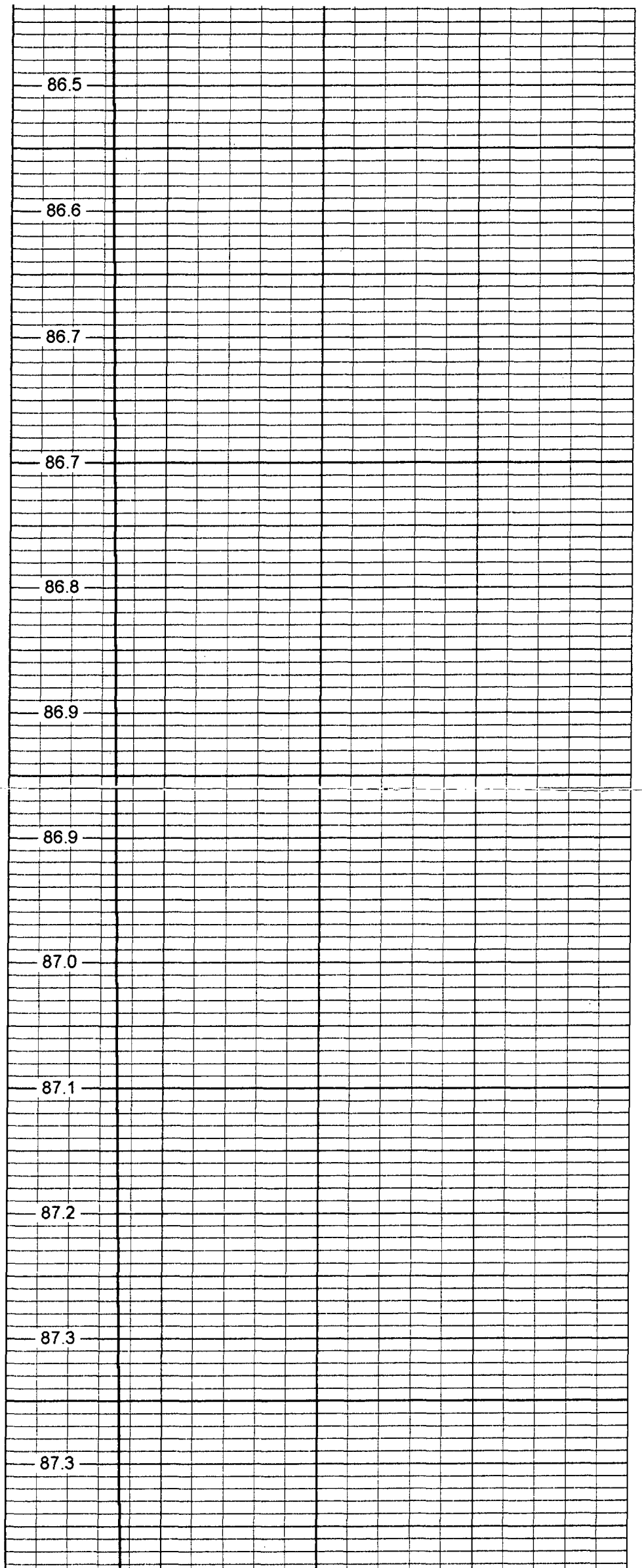
87.1

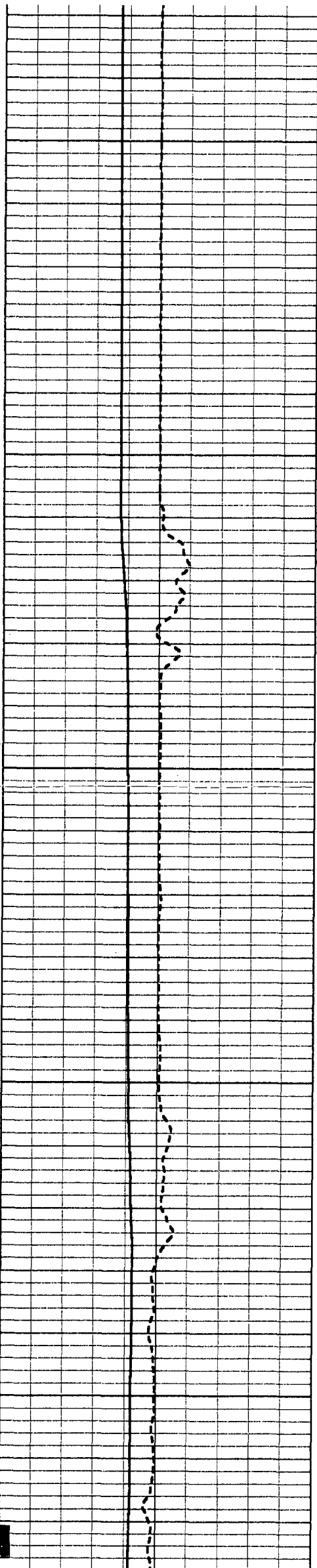
87.2

87.3

1350

87.3





1400

1450

1500

1550

1600

87.4

87.5

87.6

87.7

87.8

89.7

90.3

90.6

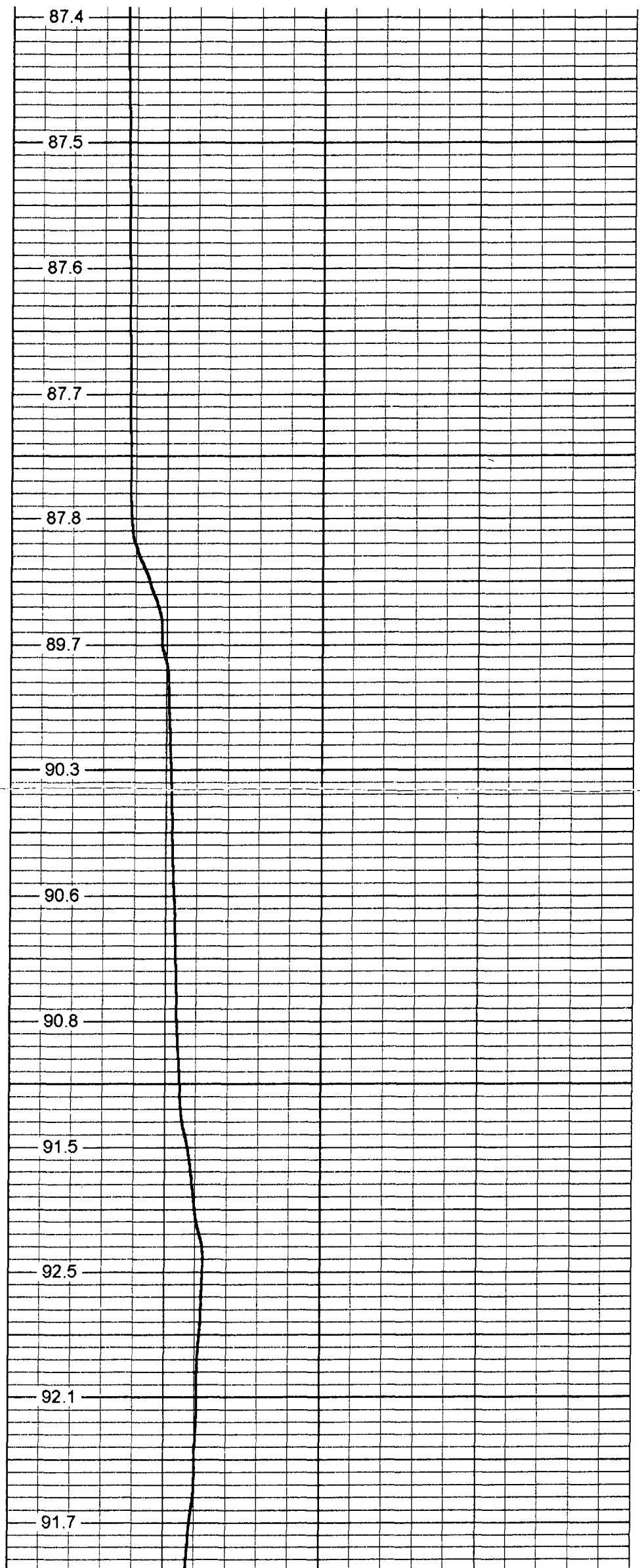
90.8

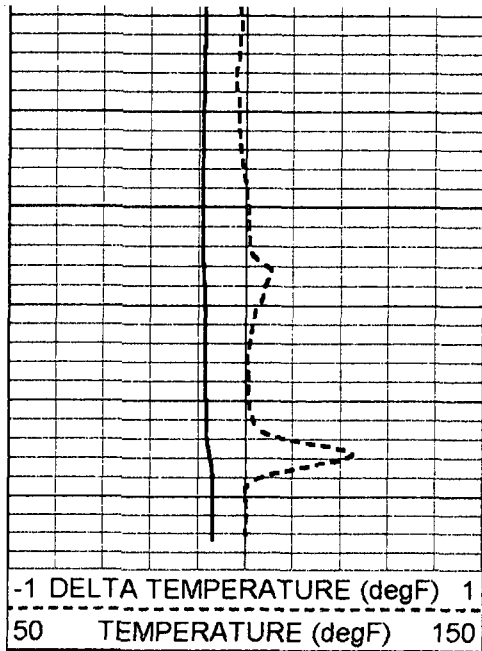
91.5

92.5

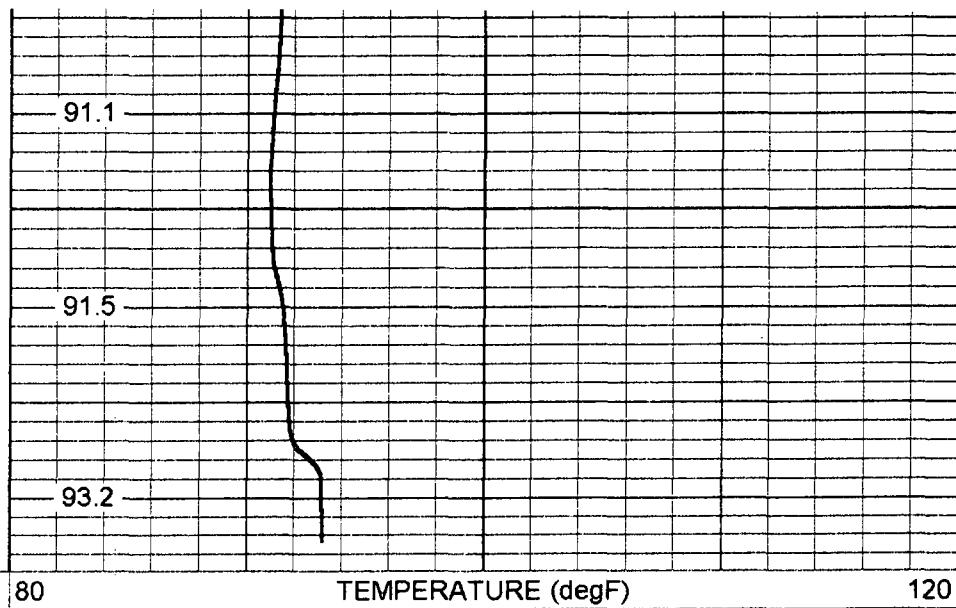
92.1

91.7





1650



-1 DELTA TEMPERATURE (degF) 1
50 TEMPERATURE (degF) 150

80 TEMPERATURE (degF) 120

Temperature Calibration Report

Serial Number: 17
Tool Model: MLS
Performed: Fri Apr 04 14:49:15 2003

Point #	Reading		Reference	
1	320	cps	32	degF
2	700	cps	70	degF
3	2000	cps	200	degF

